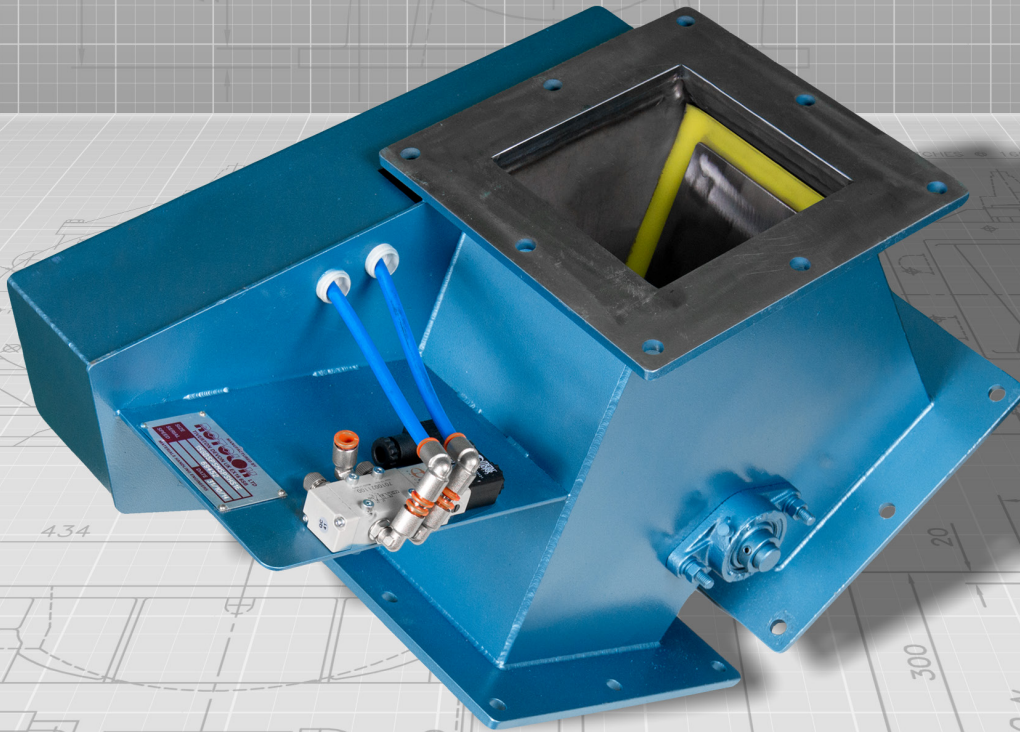


ROTOLOK

everything under control...



ROTOLOK USA

Industrial Ventures II
2711 Gray Fox Road
Monroe
North Carolina
28110
United States of America
Tel: +1 (704) 282 4444
Fax: +1 (704) 282 4242
www.rotolok.us
sales@rotolok.us



GRAVITY DIVERTER VALVES

INTRODUCTION

Gravity Feed Diverter Valves are used in the bulk handling field to re-route powders, pellets or granular materials from one discharge point to a choice of others.

Being of fabricated design Rotolok can accommodate many variations and options relating to divert angles, inlet sizes and form (square, rectangular and circular etc.).

Generally fabricated from 1/8" plate. The internal flap is manufactured with two plates sandwiching a polyurethane wiper seal, to ensure there is adequate sealing to the non-operational leg. The whole assembly is mounted on the main spindle which is supported externally by two sealed for life 2-bolt flanged ball bearings.

The pneumatically operated unit is actuated by an air cylinder complete with solenoid valve and internal piping. Limit switches are also fitted as standard equipment and positioned to indicate flap divert positions.

The manual version is operated by a smooth action handle with optional limit switches.

All pneumatic and electrical switches are fully enclosed for safety reasons.

IMPORTANT FEATURES

- Divert angle ensures good flow conditions
- Compact rugged design
- Smooth internals with negligible lodgement areas
- Simple access and minimal maintenance
- Pneumatic or manual versions
- Good sealing effect

SPECIFICATION

Bodies

Fabricated in Mild or Stainless Steel

Flap Plates and Spindle

Mild or Stainless Steel

Wiper Seal

Polyurethane or food quality rubber

Actuation

Air cylinder or manual

Pneumatic Version

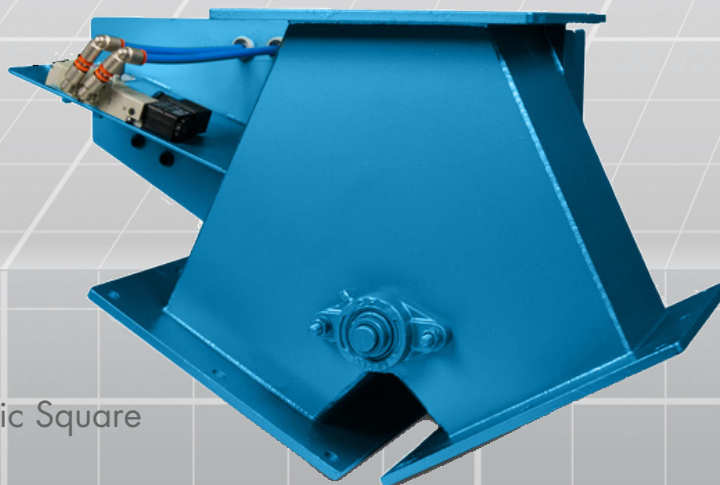
Complete with 5 port, two-way single solenoid spring return valve

Limit Switches

Positioned to indicate flap divert position

RANGE

Manufactured in four basic sizes based on a 30° divert angle. As the units are fabricated, versions can be tailor made to suit specific duties and needs. Divert angles can be changed to suit the application and the product being handled and options on inlet and outlet formats and flanges can be accommodated. With full flexibility around our standard design, Rotolok also manufactures a cast range for heavier duty application. Rotolok produces what you need to suit you application.

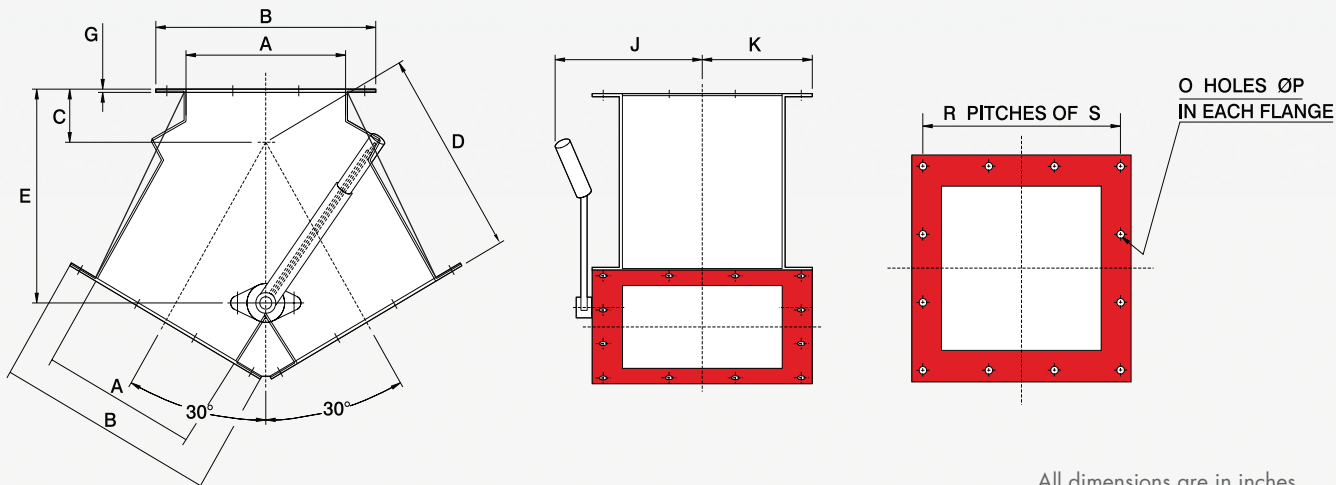


30 X 30 Pneumatic Square





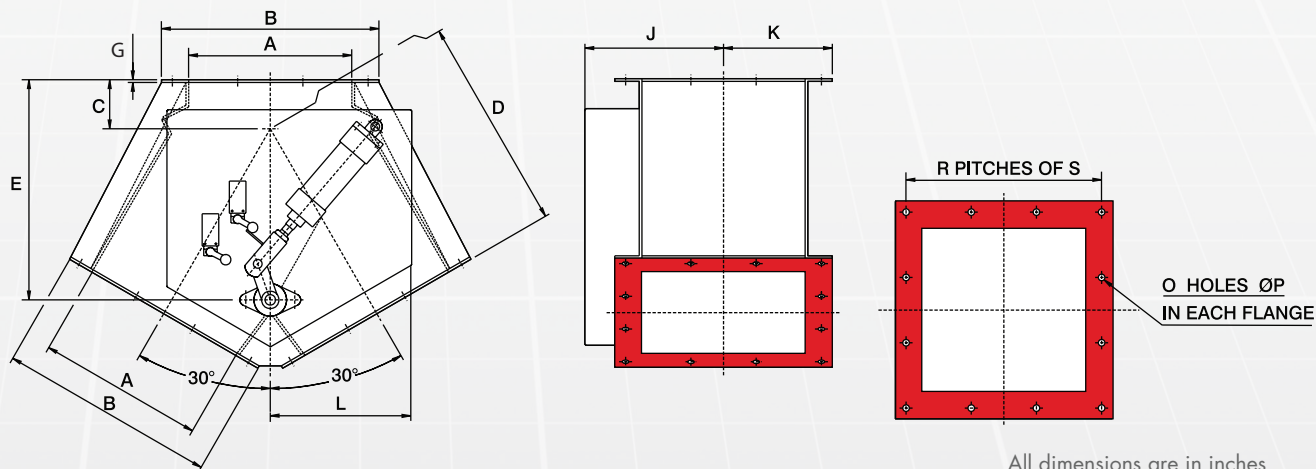
30 x 30 MANUAL SQUARE



All dimensions are in inches

SIZE	A	B	C	D	E	G	J	K	O	P	R	S
6"	6"	9 7/8"	2 3/4"	8 7/8"	9 9/16"	5/16"	7 1/4"	5"	8	1/2"	2	4 5/16"
8"	8"	11 3/4"	3"	11 3/8"	11 3/16"	1/8"	8 1/4"	5 7/8"	12	1/2"	3	3 9/16"
10"	10"	13 3/4"	3 1/4"	12 5/8"	13"	3/16"	9 1/4"	6 7/8"	12	1/2"	3	4 1/8"
12"	12"	16"	3 9/16"	15 7/16"	15 7/8"	5/16"	10 3/8"	8"	12	1/2"	3	4 3/4"
14"	14"	18"	3 1/2"	17"	17"	5/16"	12"	9"	12	1/2"	3	5 1/2"
16"	16"	19 7/8"	5 1/8"	19 5/8"	20 3/4"	5/16"	12 3/8"	10"	16	1/2"	4	4 5/8"

30 x 30 PNEUMATIC SQUARE



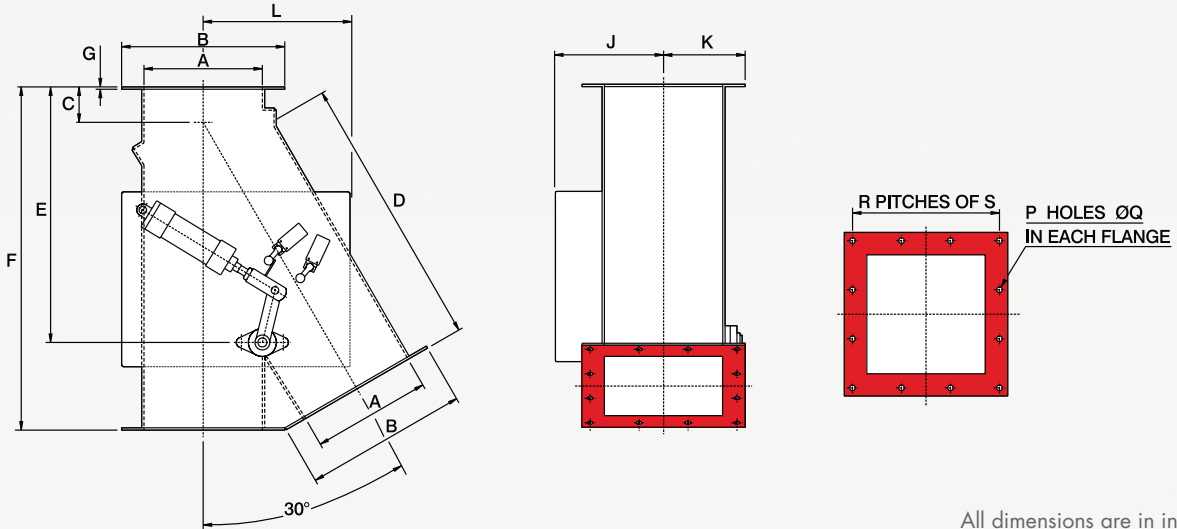
All dimensions are in inches

SIZE	A	B	C	D	E	G	J	K	L	O	P	R	S
6"	6"	9 7/8"	2 3/4"	10 1/16"	9 9/16"	5/16"	7 1/2"	4 15/16"	14"	8	1/2"	2	4 5/16"
8"	8"	11 3/4"	2 15/16"	11 3/8"	11 3/16"	5/16"	8 1/2"	5 7/8"	12 3/8"	12	1/2"	3	3 9/16"
10"	10"	13 3/4"	3 1/4"	12 5/8"	13"	5/16"	9 1/2"	6 7/8"	10 5/8"	12	1/2"	3	4 1/8"
12"	12"	16"	3 9/16"	15 7/16"	15 7/8"	5/16"	10 1/2"	8"	10 1/4"	12	1/2"	3	4 3/4"
14"	14"	18"	3 1/2"	17"	17"	5/16"	12 3/8"	9"	11 7/8"	12	1/2"	3	5 1/2"
16"	16"	19 7/8"	5 1/8"	19 5/8"	20 3/4"	5/16"	13 1/8"	10"	9 5/16"	16	1/2"	4	4 5/8"

Dimensions are approximate and subject to change without notice
 Planning-in detail for general guidance only
 (To cover safety aspects ask for our safety leaflets)
 Drillings are Rotolok standards. Variations can be made.



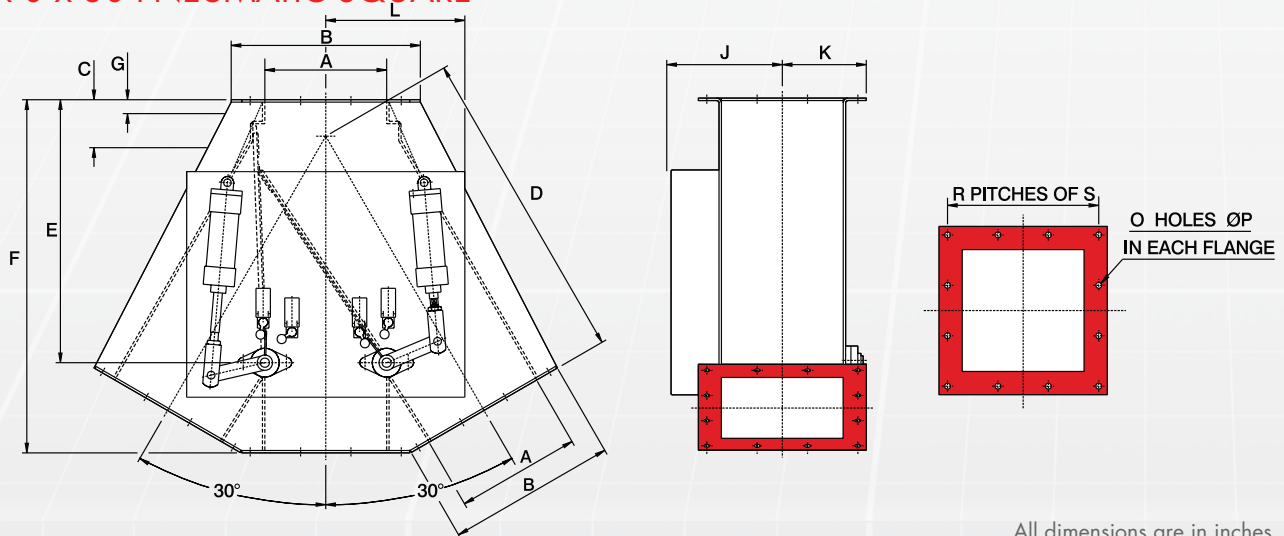
0 x 30 PNEUMATIC SQUARE



All dimensions are in inches

SIZE	A	B	C	D	E	F	G	J	K	L	O	P	R	S
6"	6"	9 7/8"	2 3/4"	18 3/4"	13 5/8"	21 1/2"	5/16"	7 3/8"	5"	13 3/8"	8	1/2"	2	4 5/16"
8"	8"	11 3/4"	3"	22 1/4"	18"	25 1/4"	5/16"	8 1/2"	5 7/8"	10 3/4"	12	1/2"	3	3 9/16"
10"	10"	13 3/4"	3"	26"	21 5/8"	29"	5/16"	9 1/2"	6 7/8"	10 1/4"	12	1/2"	3	4 1/8"
12"	12"	16"	3"	32 1/2"	25 13/16"	35 1/2"	5/16"	11 1/8"	8"	11 3/4"	12	1/2"	3	4 3/4"
14"	14"	18"	4 1/4"	34 3/16"	30 3/8"	38 7/16"	5/16"	12 1/8"	9"	13"	12	1/2"	3	5 1/2"

30 x 0 x 30 PNEUMATIC SQUARE



All dimensions are in inches

SIZE	A	B	C	D	E	F	G	J	K	L	O	P	R	S
6"	6"	9 7/8"	2 3/4"	18 3/4"	13 5/8"	21 1/2"	5/16"	8 1/2"	5"	14"	8	1/2"	2	4 5/16"
8"	8"	11 3/4"	3"	22 1/4"	18"	25 1/4"	5/16"	8 1/2"	5 7/8"	9 7/8"	12	1/2"	3	3 9/16"
10"	10"	13 3/4"	3"	26 1/8"	21 5/8"	29 1/8"	5/16"	9 1/2"	6 7/8"	11 7/8"	12	1/2"	3	4 1/8"
12"	12"	16"	3"	32 1/2"	25 13/16"	35 1/2"	5/16"	11 1/8"	8"	18 5/16"	12	1/2"	3	4 3/4"

Dimensions are approximate and subject to change without notice
 Planning-in detail for general guidance only
 (To cover safety aspects ask for our safety leaflets)
 Drillings are Rotolok standards. Variations can be made.