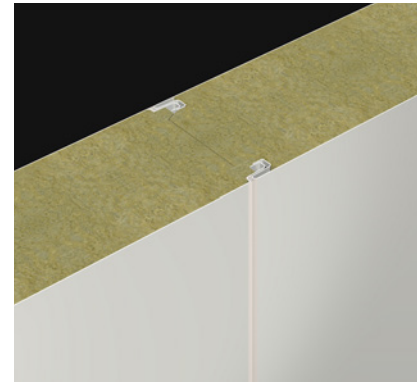
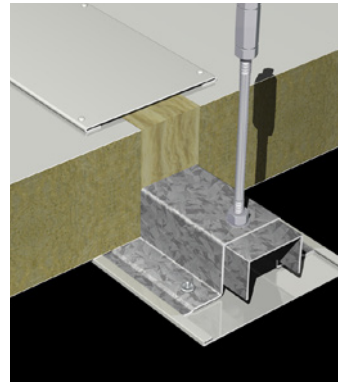
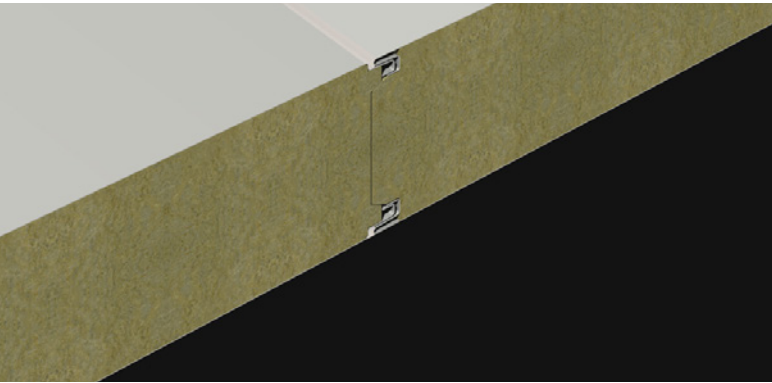


MINERAL FIBRE CORE PANEL



Joint detail included for illustration only, exact joint detail may vary, please contact us should you require further information

Panel Thickness (T) mm	U-Value (W/m ² K)	Weight (kg/m ²)	Max Wall & Ceiling Spans (m)*	Fire Certification**
75	0.46	15.09	6.0	30
100	0.35	17.34	6.9	30-60
125	0.29	19.59	7.7	30-60
150	0.24	21.84	8.4	60-90
175	0.21	24.09	9.1	60-90
Standard Lengths 1.8 to 12m				
Standard Width 1200mm				

* Indicative values only, based on specific testing criteria, please contact us for further information if required

**Based on 0.9kN/m² maximum uniformly distributed loads. Indicative values only, based on specific testing criteria, please contact us for further information if required

***When installed to appropriate specification

Application

Controlled environment insulated wall & ceiling panel system that can be laid vertically or horizontally and can be suitable for internal or external wall and roof applications.

Insulation Core

- 99Kg/m³ stone wool manufactured from diabase rock

Substrate

- Steel
- Thickness : 0.5mm nominal internal & external

Substrate Coatings

- Foodsafe laminate
- Primer coated galvanised
- White/grey polyester
- Stainless steel 304

Heat Transmission

- Thermal Conductivity (λ) 0.039 W/mK

Fire Certification

- LPCB certified to LPS 1181 & 1208: FR30 & FR60 – Wall & Ceilings
- FM Approved to FMRC 4880 Class 1 Fire Classification

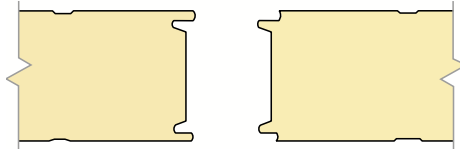
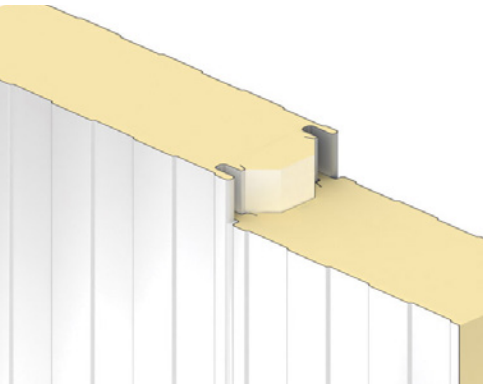
Air Tightness

Air tightness 0.02m³/hr/m² @ 50Pa BSEN14509

Sustainability

- End of Life: Fully recyclable at conventional shredder plants

POLYISOCYANURATE (PIR) PANELS



Joint detail included for illustration only, exact joint detail may vary, please contact us should you require further information

Panel Thickness (T) mm	U-Value (W/m ² K)	Weight (kg/m ²)	Max Wall Span (m)*	Max. Ceiling Span (m)**	Fire Certification**
50	0.39	10.6	7.0	4.0	N/A
80	0.25	11.8	9.0	6.0	N/A
100	0.20	12.6	10.0	7.0	FR30
125	0.16	13.7	11.4	8.0	FR30
150	0.13	14.8	12.0	8.9	FR30
175	0.11	15.9	12.5	9.5	FR60
200	0.10	16.9	14.4	10.3	FR60

Standard Lengths 2.5m to 15m

* Indicative values only, based on specific testing criteria, please contact us for further information if required

**Based on 0.9kN/m² maximum uniformly distributed loads. Indicative values only, based on specific testing criteria, please contact us for further information if required

***When installed to appropriate specification

Application

Controlled environment insulated wall & ceiling panel system that can be laid vertically or horizontally and can be suitable for internal or external wall and roof applications.

Insulation Core

- Environmentally sustainable closed cell PIR insulation which is non-deleterious with Zero Ozone Depletion Potential (Zero ODP)

Substrate

- Hot dipped zinc coated metal
- Thickness: 0.5mm nominal internal & external

Substrate Coatings

Plain Prime Coating 15 µm

- Colour: Variable

Polyester coating 25 µm

- Colour: White 9010 (RAL)

Foodsafe PVC laminate 120 µm

- Colour: White 9003 (RAL)

Heat Transmission

- Thermal Conductivity (λ) 0.020 W/mK

Fire Certification

- LPCB certified to LPS 1208: FR30 & FR60 – Wall & Ceilings
- FM Approved to FMRC 4880 Class 1 Fire Classification

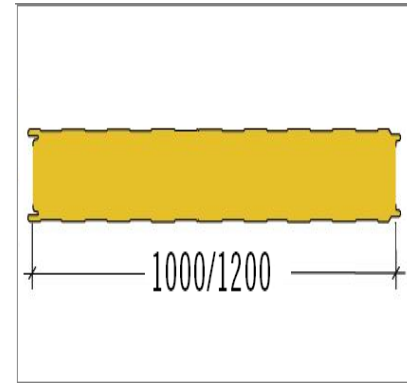
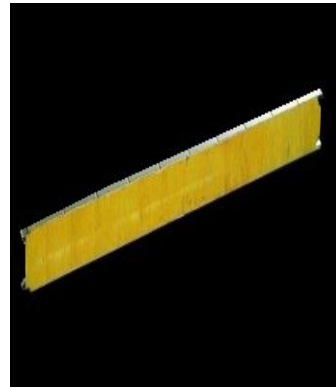
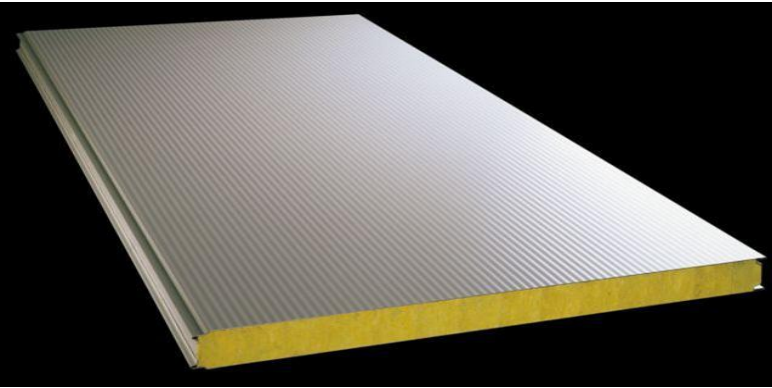
Air Tightness

Air tightness 0.02m³/hr/m² @ 50Pa BSEN14509

Sustainability

- End of Life: Fully recyclable at conventional shredder plants
- Responsible Sourcing: manufacturing plants used are either BS EN ISO 14001: 2004 (Environmental management systems) accredited or are currently working towards this accreditation

MINERAL FIBRE CORE PANEL



Joint detail included for illustration only, exact joint detail may vary, please contact us should you require further information

Panel Thickness (mm)	U-Value (W/m²K)	Weight (kg/m²)	Max Wall Spans (m)*	Max Ceiling Spans (m)**	Fire Certification***
50	0.74	16.3			-
60	0.61	17.5	6.60	4.00	EI 30
80	0.47	19.9	7.70	5.00	EI 60
100	0.39	22.3	8.70	5.70	EI 90
120	0.32	24.7	9.60	6.30	EI 120
150	0.26	28.3	10.40	6.70	EI 180
200	0.20	34.3	200	7.10	EI 240
Standard Widths 1000mm to 1200mm					
Standard Length 2.5m to 14m					

* Based on 120kg/m³ mineral wool density panel core, temperature and gradient over panel 0°C - 6°C, internal loading 0.3 kN/m², maximum deflection L / 150 indicative values only, based on specific testing criteria, please contact us for further information if required

** Based on 130kg/m³ mineral wool density panel core, temperature and gradient over panel 0°C - 6°C, panel dead weight loading, point load of 0.9 kN and a UDL of 0.25 kN/m² as BS6399 Part 1, maximum deflection L / 200

*** Class EI acc. to EN 1364-1 when installed to appropriate specification

Application

Controlled environment insulated, fire resistant wall & ceiling panel system that can be laid vertically or horizontally and can be suitable for internal or external wall and roof applications.

Insulation Core

- Laminated mineral wool Class A1 (EN 13501-1) non-combustible

Substrate

- Steel sheet galvanized on both sides with a zinc coat of 275g (ZN)/m²
- Thickness : 0.6mm nominal internal & external

Substrate Coatings

Polyester Coating 25 µm

- Colour: White 9010 (RAL), other colours available on request

Also available PVDF, Polyester, Plastisol, Foodsafe hygienic protection

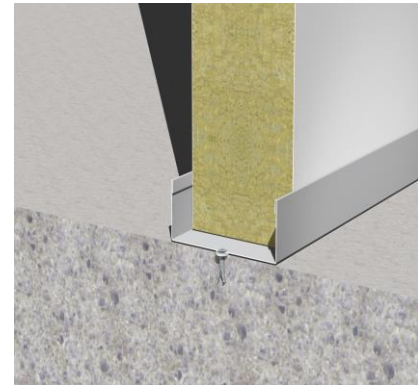
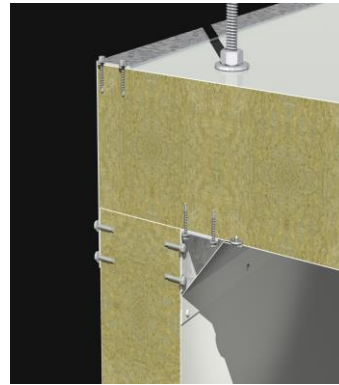
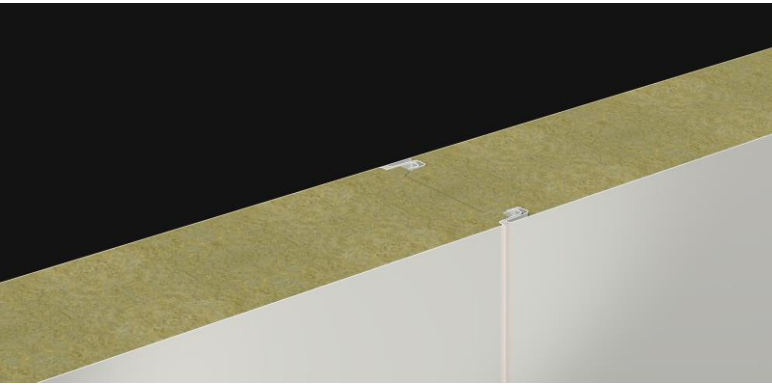
Fire Certification

- LPCB certified to LPS 1208: Wall & Ceilings
- FM Approved to FMRC 4880 Class 1 Fire Classification

Sustainability

- End of Life: Fully recyclable at conventional shredder plants

MINERAL FIBRE CORE PANEL



Joint detail included for illustration only, exact joint detail may vary, please contact us should you require further information

Panel Thickness (T) mm	U-Value (W/m ² K)	Weight (kg/m ²)	Max Wall & Ceiling Spans (m)*	Fire Certification (min)**
75	0.49	18.46	8.2	60
100	0.38	21.84	9.4	30-120
125	0.31	25.21	10.5	30-120
150	0.26	28.59	11.5	30-120
175	0.23	31.97	12.0	180***
Standard Lengths 1.8 to 12m				
Standard Width 1200mm				

* wall panel based on 0.25kN/m² maximum uniformly distributed load. Ceiling panel calculations are based on BS6399 using a uniformly distributed load of 0.25 kN/m² plus a point load of 0.9 kN based on the cold state structural performance of the panels. Where fire resistance is required the allowable spans may need to be reduced to ensure the fire resistance is maintained.

**exact fire resistance dependent on installation and span.

***0.7mm facings

Application

Controlled environment insulated wall & ceiling panel system that can be laid vertically or horizontally and can be suitable for internal or external wall and roof applications.

Insulation Core

• 135Kg/m³ stone wool manufactured from diabase rock

Substrate

- Steel
- Thickness : 0.5mm nominal internal & external (75- 150mm panel thickness) & 0.7mm nominal internal & external for 175mm panel thickness

Substrate Coatings

- Foodsafe laminate
- Primer coated galvanised
- White/grey polyester
- Stainless steel 304

Heat Transmission

- Thermal Conductivity (λ) 0.042W/mK

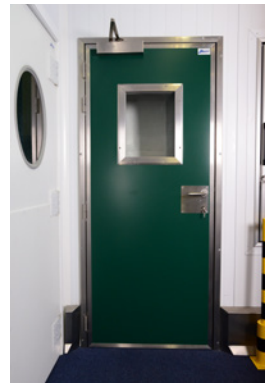
Fire Certification

- LPCB certified to LPS1181 & 1208: FR30 & FR60 – Wall & Ceilings
- FMA approved to FMRC4880 Class1 Fire Classification

Sustainability

- End of Life: Fully recyclable at conventional shredder plants

FIRE RATED PERSONNEL DOOR



Please note that images are included for illustration purposes only and exact details may vary, please contact us should you require further information

Application

Single or double leaf 40mm thick personnel door suitable for warehouses, corridors, production areas, offices etc. available in a range of RAL colours, finishes and vision panels.

Door Leaf

- White painted steel RAL 9010 as standard, other finishes available at additional cost
- 0.6mm steel substrate thickness
- Injected polyurethane insulation with a conductivity coefficient of $0.022\text{w/m}^{\circ}\text{C}$
- Polyurethane density of $40\text{-}45\text{ kg/m}^3$

Door Frame

- Standard aluminium frame
- Clamp frame to suit panel thickness or fixed frame for brickwork installation

Standard Accessories

- Stainless steel lever handles and hinges

Standard Dimensions

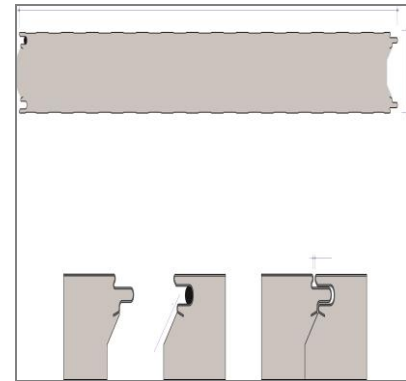
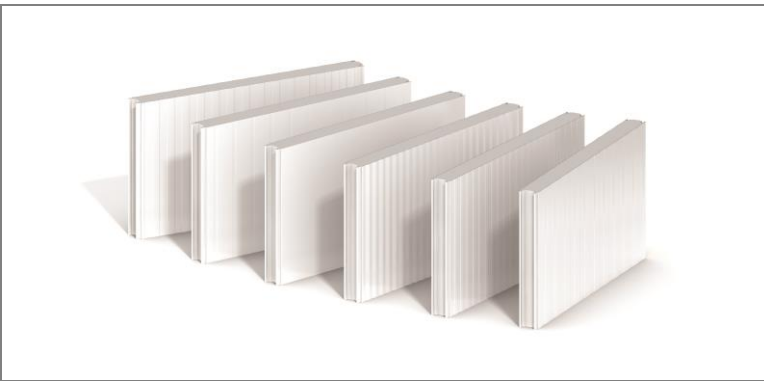
	MM
Single Leaf - Clear Width	From 700 to 1000
Single Leaf - Clear Height	From 1800 to 2200
Double Leaf - Clear Width	From 1200 to 2200
Double Leaf - Clear Height	From 2200 to 2400
Leaf Thickness	40
Structural Opening Width**	Clear width +80
Structural Opening Height**	Clear height +40

* When fixing to panels with clamp frame

Optional Accessories

- Range of vision panel shapes, styles and finishes including laminated glass or metacrilate glazing
- Speed adjustable door closures with a variety of opening functions and finishes
- Eurocylinder key locks, thumb turn locks, keycode locks
- Push plate & pull handles with roller latch, emergency escape panic furniture, magnetic interlock system including indicator lights
- Door protection in stainless steel, 5-bar aluminium or 8mm white polyethylene
- Finish available in range of RAL colours or stainless steel for both the door leaf and frame

IPN-QUADCORE PANEL



Joint detail included for illustration only, exact joint detail may vary, please contact us should you require further information

Panel Thickness (mm)	U-Value (W/m ² K)	Weight Based on 0.5mm/0.5mm	Max Wall Spans (m)* Chill	Max Ceiling Spans (m)** Chill	Fire Certification***
50	0.38	10.6 kg/m ²	5.4	3.6	N/A
80	0.23	11.8 kg/m ²	7.5	5.5	N/A
100	0.18	12.6 kg/m ²	8.9	6.6	FR 30
125	0.15	13.6 kg/m ²	10.2	7.7	FR 30
150	0.12	14.6 kg/m ²	11.3	8.8	FR 30
175	0.10	15.6 kg/m ²	12.2	9.7	FR30 & FR60
200	0.09	16.6 kg/m ²	13.3	10.2	FR30 & FR60

Standard Widths 1100mm

Standard Length 1.8m to 14.5m

* Indicative values only, based on specific testing criteria, please contact us for further information if required

** Based on 0.9kN/m² maximum uniformly distributed loads. Indicative values only, based on specific testing criteria, please contact us for further information if required

*** When installed to appropriate specification

Application

Controlled environment insulated, fire resistant wall & ceiling panel system that can be laid vertically or horizontally and can be suitable for internal or external wall and roof applications.

Insulation Core

• Kingspan IPN-QuadCore hybrid insulation core non-combustible

Substrate

- Steel sheet galvanized on both sides with a zinc coat of 275g (ZN)/m²
- Thickness : 0.5mm nominal internal & external

Substrate Coatings

Polyester Coating 25 µm

• Colour: White 9010 (RAL), other colours available on request

Also available PVDF, Polyester, Plastisol, Foodsafe hygienic protection

Fire Certification

- LPCB certified to LPS 1208: Wall & Ceilings
- FM Approved to FMRC 4880, 4881, 4882 Class 1 Fire Classification

Sustainability

- UltraTemp insulated panels with IPN-QuadCore formulation can achieve a Green Guide A+ rating as per the BRE Global Green Guide to Specification
- End of Life: Fully recyclable at conventional shredder plants