

# STAR 200

ELECTROMECHANICAL MOTOR FOR SWING GATES WITH LEAVES UP TO 2 m, 24 Vdc



## PLUS



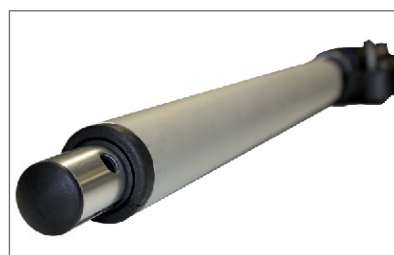
New version without encoder

Easy slowdown and open limit settings

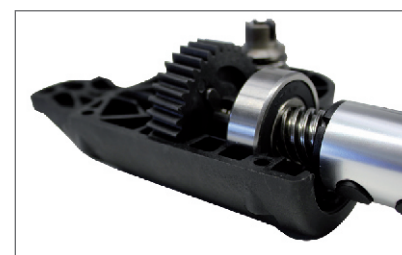
Mechanical parts well protected from external agents

Available on kit version

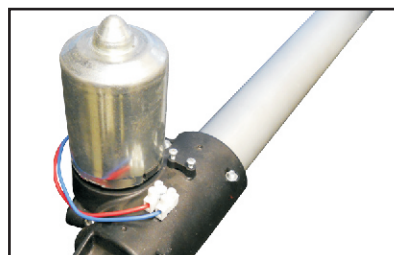
Compatible with control unit CT202 24 (pag. 129 for technical details)



Sturdy telescopic stem



Robust gears and mechanical parts



New version without encoder



Metallic release system

## MODELS

CODE	DESCRIPTION	PCS PALLET
 STAR2024	For swing gates with maximum length 2 m, pair of irreversible 24 Vdc motors, without encoder (2 pcs, left and right)	21

### TECHNICAL DATA

STAR2024

#### MECHANICAL DATA

speed	cm/s	1,8
pulling force	N	1400
working cycle	%	80
opening time at 90°	sec	15-20

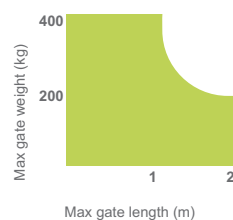
#### ELECTRICAL DATA

control board		CT202 24
power	Vac (Vdc)	(24)
motor consumption	A	3,5
absorbed power	W	85

#### GENERIC DATA

protection degree	IP	54
dimensions (L - D - H)	mm	646 - 115 - 177
weight	kg cad	3
working temperature	°C	-20 + 55
leaves maximum weight	Kg	400

### LIMIT USE



Gate shape and height and weather conditions can considerably reduce the values shown above, in the graph. 230 Vac motors are suggested for windy areas

## ACCESSORIES



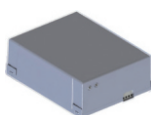
**ADFB**  
Adjustable front mounting bracket



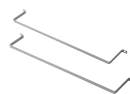
**ADRB**  
Adjustable rear mounting bracket



**ELS-C**  
Horizontal 12 V electrolock



**KBP**  
Battery back-up kit



**KITFIXBATT**  
Fixing batteries brackets



**CT202 24**  
Control unit in box for two 24 Vdc motors



**TS**  
Warning board