

AXI-5100C II

COMPONENT COUNTING SYSTEM WITH
AUTOMATIC LOADER AND PRINTER



System Details

AXI-5100c II Component Counting System

The New ScienScope AXI-5100c II is the most advanced, automated component counting system in the world. This automated system communicates with data management providing complete inventory control and by using an inline integrated conveyor system, it counts components faster than any other systems on the planet. Save time, save money, reduce labor and avoid the dreaded "line down" scenario due to lack of a component.

Applications

- ✓ JEDEC Trays
- ✓ 7", 13" and 15" Reels
- ✓ BGA Ball Count
- ✓ Loose Wound Components
- ✓ Cut Strips
- ✓ Copper Splice Removal
- ✓ Sealed ESD Bags
- ✓ Tightly Wound Components
- ✓ Desiccant Penetrable



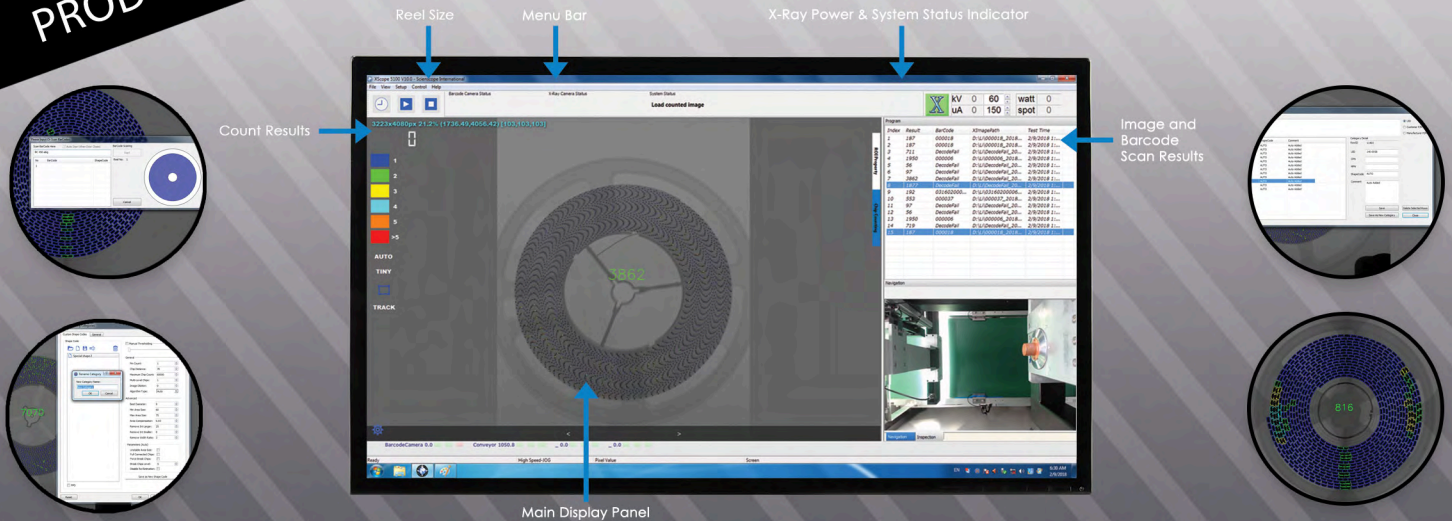
← **SCAN THIS CODE
WITH YOUR SMART PHONE**

FEATURING

- Fast, Intuitive, user friendly software interface with 99.9% accuracy
- Scanning of 7", 13" & 15" reels
- Scanning of JEDEC trays and counting of BGA balls
- Scanning of loose wound components or tightly wound components
- Scanning of sealed ESD bags
- Built in library with automatic AI technology
- Automatic continuous feeding and positioning
- High-Speed 8k line scan camera
- Smart Reader that automatically acquires one dimensional or two-dimensional code and material height, size, type and other information
- Industrial PC: Microsoft Windows 7 Pro (64-bit)
- Automatic Loader and Printer
- MES Intergration Available

PRODUCT SPECIFICATIONS

**WORLDS FASTEST COMPONENT COUNTER
THE FUTURE OF INVENTORY MANAGEMENT!**



MACHINE SPECIFICATIONS



Reel Loader

- ✓ Dimensions: 1300mm L x 1400mm W x 1800mm H
- ✓ Weight: 500kg
- ✓ Operating System: Windows 10
- ✓ Voltage / Pressure: 220 V/≥ 0.1Mpa
- ✓ Loader Reel Sizes: 7", 13" and 15"
- ✓ Maximum Qty of Reels: 7" H 15mm: 200(max)
13" & 15" H 15mm: 50(max)
- ✓ Trolleys: 2
- ✓ Reel Loader: Trolley
- ✓ Reel Rise: Elevator
- ✓ Reel Transplant: Manipulator
- ✓ Reel Output: Automatic Belt

Label Printer

- ✓ Dimensions: 1060mm L x 1050mm W x 1800mm H
- ✓ Weight: 700kg
- ✓ Operating System: Windows 10
- ✓ Voltage / Pressure: 220 V/≥ 0.5Mpa
- ✓ Accuracy: ±0.5mm
- ✓ Speed of Print and Label: 10S
- ✓ Label Size: 60mm x 25mm
- ✓ ESD: 10⁵~10⁹

Software

- ✓ Docking w/ Intelligent Warehousing
- ✓ Reads Barcode Information & Uploads MES/ERP System
- ✓ Collects Information From System & Prints Labels Automatically
- ✓ Identifies Various Types Of Barcode Formats
- ✓ Docking With AGV Tuck

THIS SYSTEM INCLUDES A 1 YEAR WARRANTY ON PARTS AND LABOR

Compliance

THE SCIENSCOPE X-SCOPE X-RAY INSPECTION SYSTEMS MEET THE FDA-CDRH REGULATION CFR 21 1020.40 SUBCHAPTER J FOR CABINET X-RAY SYSTEMS. THE FDA-CDRH STANDARD FOR CABINET X-RAY SYSTEMS STATES THAT RADIATION EMISSIONS WILL NOT EXCEED 50 MICRO R/HR 5 CM FROM ANY EXTERNAL SURFACE. THE X-SCOPE X-RAY INSPECTION SYSTEMS TYPICALLY HAVE A RADIATION EMISSION READING OF LES THAN 20 MICRO R/HR 5 CM FROM ANY EXTERNAL SURFACE. ALL SCIENSCOPE X-SCOPE X-RAY SYSTEMS HAVE A CE APPROVAL. SCIENSCOPE X-SCOPE X-RAY SYSTEMS ARE CLASSIFIED AS "CABINET X-RAY SYSTEMS" AND REQUIRE NO EXTERNAL RADIATION SHIELDING. WELDED STEEL / LEAD-STEEL CONSTRUCTION, NO VISIBLE SHIELDING.

FDA ACCESSION NUMBER: 0710198

CE REFERENCE NUMBER: CN.CE.0402-05.09

