

Fireflexmaster

High performance **multi-fuel** twin wall flexible flue liner



Manufactured and approved to European Standard **EN1856-2** with designations:

T600 N1 D VmL40011 G
T600 N1 W VmL40022 G

 approved

Approved by



316L material specification with **10 year warranty**

904L material specification with **20 year warranty**

Renowned **Triple Lock Joint System**

links inner and outer liner walls to provide strength and stability


docherty
GROUP

Specialist distributor of **flues**, **chimneys** & **renewable appliances**

www.docherty.co.uk

Fireflexmaster

Complete capability from the Docherty Group

We're the leading independent UK manufacturer and distributor of flue and chimney systems and renewable fuel appliances.

With over 50 years of experience, our name is synonymous with consistent quality, reliable supply and excellent customer care, delivered through a network of our own branches and accredited dealers.

The Group also offers specialist HETAS approved training courses for installers from a purpose-built facility.

Customer Service

The Docherty Group directly employs a team of dedicated sales professionals, all comprehensively trained to exacting standards and offering the very best pre-sales technical and practical support for our industry customers.

We always deliver the products our customers want - when they want them and, with an unrivalled branch network, we're never too far away!

Quality

We operate a Quality Management System with accreditation to European Standard ISO 9001:2008.

Fireflexmaster is a high performance twin-walled flexible flue liner designed and approved for use with all fuels including gas, oil and approved solid fuels.



Material Specification and Warranty

The standard product is manufactured from **316L grade stainless steel** and is supplied with a ten year warranty. A superior **904L grade stainless steel** option is also available, supplied with a twenty year warranty.

Construction

The corrugated outer wall provides crush protection during installation. The inner wall is smooth to encourage the flow of flue gasses and to discourage the build up of soot and other potentially corrosive residue. The inner and outer walls are joined by a **Triple Lock Joint System**, acknowledged to be the best available for strength and longevity.

Dimensions

Fireflexmaster is available in a comprehensive range of diameters suiting all applications, from **100mm to 350mm**. Supplied in drums to enable installers to cut the desired length as required and also in pre-cut packs to reduce labour cost and time.

Approval

Fireflexmaster is manufactured and approved to the latest **European Standard EN1856-2**. It is also approved by **HETAS**, the official body recognised by Government to approve biomass and solid fuel domestic heating appliances, fuels and services.

www.hetas.co.uk



Fireflexmaster

Accessories

You name it, we can supply it! Connecting flues, adaptors, terminals, flashings, insulation, wraps, fire cement and sealants are all well stocked and readily available from all of our branches.

Need something special?

Very few installations are the same and we recognise that there's a need to manufacture special components to provide solutions for designers and installers.



MA Multifuel Adaptors

To facilitate the joining of the connecting flue to an equal diameter flexible flue liner. Bolt-fix and clip-fit versions available.



MR Multifuel Increasing Adaptors

To facilitate the joining of the connecting flue to a larger diameter flexible flue liner. Bolt-fix and clip-fit versions available.



Long Tail Adaptors

To facilitate the joining of the connecting flue to the flexible flue liner. The long tail can pass through the closure plate allowing the connecting flue below to have slide adjustment without the need of a telescopic length. Bolt-fix and clip-fit versions. Available as MA and MR (increaser) options.



Top Hat Adaptors

To facilitate the joining of the connecting flue to the flexible flue liner. Allows the connecting flue below to have slide adjustment without the need of a telescopic length. Can be used to ventilate the chimney void. Bolt-fix and clip-fit versions. Available as MA and MR (increaser) options.

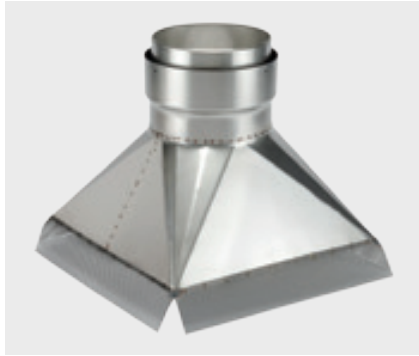


150° Angled Long Tail Adaptors

To facilitate the joining of the connecting flue to the flexible flue liner at an angle. The long tail can pass through the closure plate allowing the connecting flue below to have slide adjustment without the need of a telescopic length. Available as MA and MR (increaser) options.

Illustration shows clip-fit fixing.





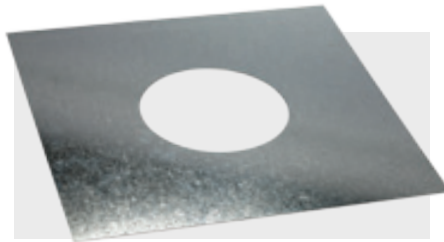
Gathers

If a chimney is being relined above an open fire, it is necessary to have a gather fitted above the fireplace to which the flexible flue liner is attached.



Nose Cone

Designed to temporarily attach to the bottom end of the liner to prevent damage and to enable it to be drawn down through the chimney using a guide rope.



Top Plate

Used to close off the void and weatherproof the insulation below.



Top Clamp

Used to support the liner at the top of the chimney. To be used in conjunction with top plate.



Protection Sleeve

Designed to tidy the top of the liner and to cover any sharp edges to make sweeping easier.

Terminals

Docherty Group manufactures a wide range of terminals to suit any application.

Detailed below are our most popular terminals for use with Fireflexmaster. If you require another option please contact your nearest branch.



Standard Cowl

For use on oil and solid fuel applications, the standard cowl simply helps prevent rain water entering the chimney.



Suspension Cowl

Used as an alternative to the traditional top plate and clamp; this terminal simply clips to the liner and is attached to the chimney pot by a jubilee clip.

Also available in natural stainless steel finish



Pot Hanging Cowl

The Pot Hanging Cowl has a separate support clamp that, when fitted first, allows the chimney to be easily back-filled before the terminal is fitted. Can also be used to ventilate the top of the chimney.

Also available in natural stainless steel finish



Closure Plate

Closes off the base of the chimney to prevent debris falling through the space into the living area and facilitates the option of backfilling or ventilating the chimney void.



Support Bracket

Provides lateral stability to the liner along its length and at the base.

Fireflexmaster

Accessories

Dimensions

continued



Liner Insulation Wrap

An alternative to backfilling the chimney. Simply wraps around the liner to help maintain flue gas temperature and improve performance.



Carbon Monoxide Alarm

In rooms where a solid fuel appliance is installed it is a legal requirement to fit an audible CO alarm conforming to BS EN 50291, positioned in accordance with Building Regulations Approved Document J.



A comprehensive range of diameters suiting all applications.

Diameter Range (mm)
100
125
150
175
200
225
250
300
350

1m = 3.28ft

1ft = 0.3048m

Drums

Drums available enabling installers to cut the desired length as required.

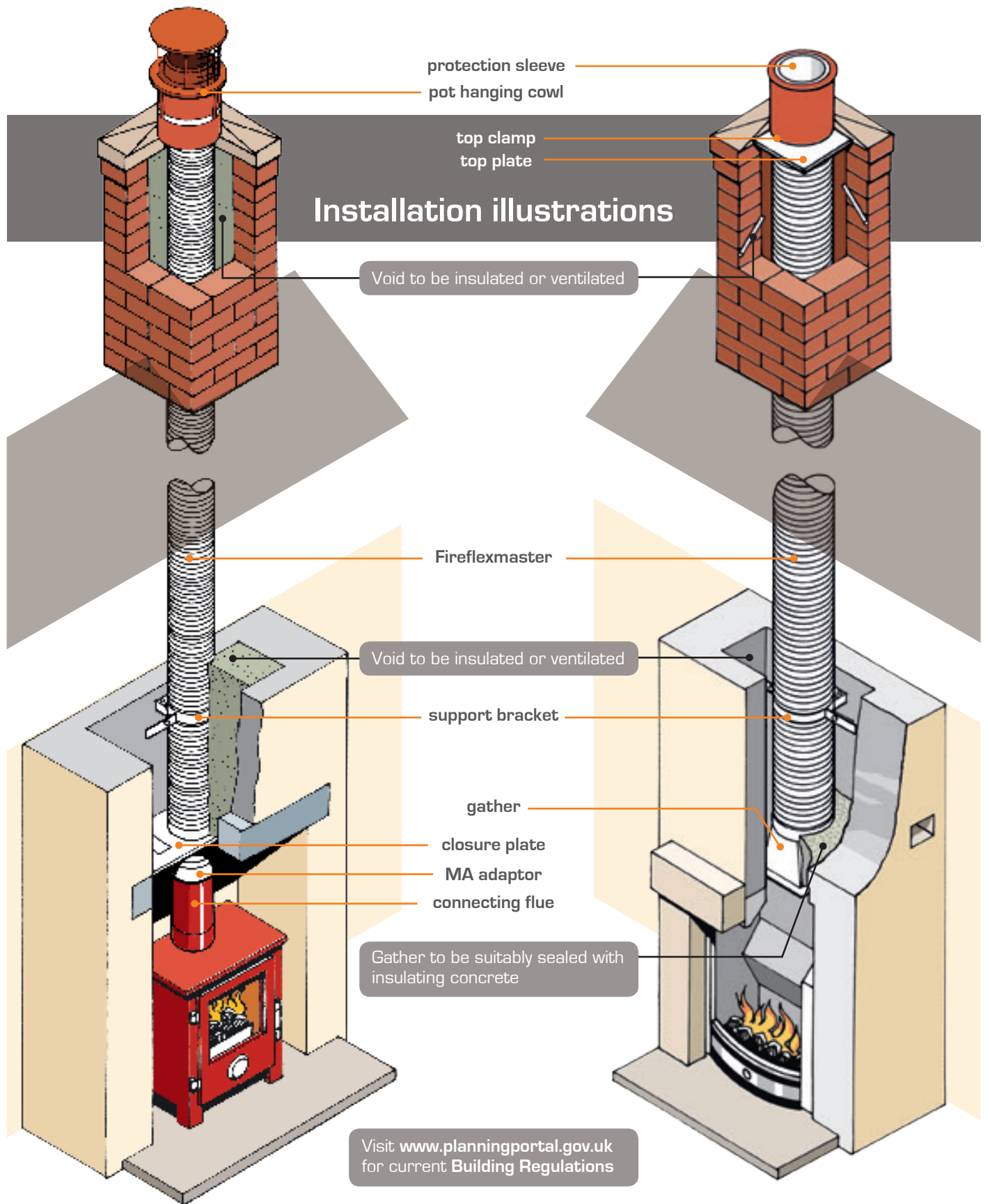
Diameter (mm)	Drum Lengths (m)
125	33
150	33
175	30
200	30

Longer drum lengths may be available by special request.

Packs

Available in pre-cut packs to reduce labour cost.

Liner Pack Lengths (m)
5
6
7
8
9
10
11
12



NOTE: For clarity, masonry has been omitted from part of illustrations.

Installation Instructions

Fireflexmaster must only be installed by a competent approved installer and in accordance with detailed installation instructions which are available on request or can be downloaded from our website.

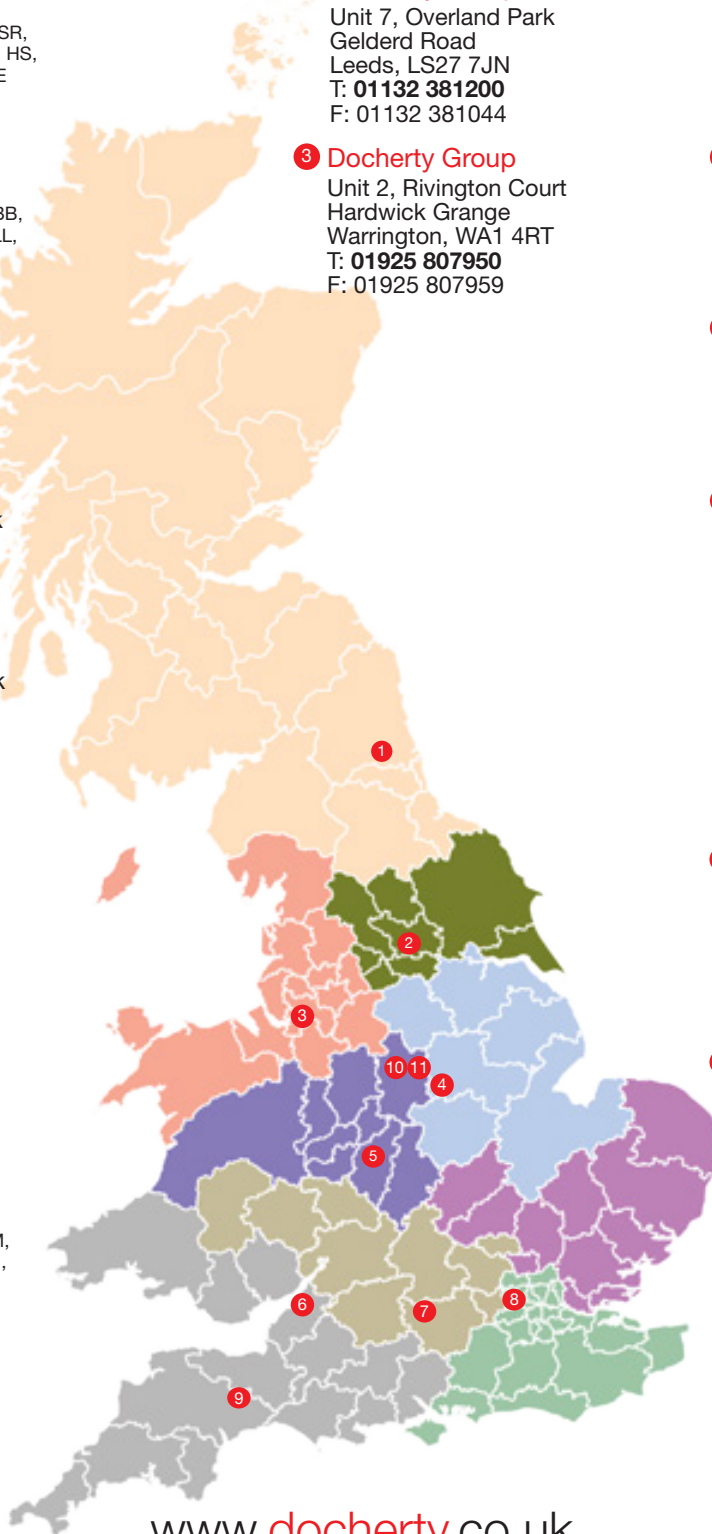
Maintenance

All chimneys must be swept at least once a year by an approved sweep. More frequent sweeping may be required if the appliance is used continually.

The Docherty Group in the UK

Area Sales Managers

- Stephen Dodds**
07771 654 897
sdodds@docherty.co.uk
Postcode areas: TS, DL, DH, SR, NE, CA, TD, EH, KY, DD, AB, KW, HS, IV, PH, PA, FK, G, ML, KA, DG, ZE
- Shirley Steed**
07974 267 795
ssteed@docherty.co.uk
Postcode areas: LA, FY, PR, BB, OL, BL, WN, L, M, WA, SK, CH, LL, CW, IM
- Sam Lowe**
07966 471 139
slowe@docherty.co.uk
Postcode areas: HU, YO, HG, LS, WF, HD, HX, BD
- Gary Duerden**
07901 661 480
gduerden@docherty.co.uk
Postcode areas: PE, LE, NG, LN, S, DN
- Keith Petitjean**
07967 383 950
kpetitjean@docherty.co.uk
Postcode areas: DE, ST, TF, WS, WV, DY, B, CV, SY
- Geoff Little**
07970 473 355
glittle@docherty.co.uk
Postcode areas: TR, PL, TQ, EX, TA, DT, BH, SO, SP, BA, BS, NP, CF, SA
- Darren Willetts**
07850 994 128
dwilletts@docherty.co.uk
Postcode areas: LU, RG, SN, OX, GL, HR, SL, HP, WR, LD
- Sacha Aarons**
07974 975 444
saarons@docherty.co.uk
Postcode areas: PO, BN, TN, CT, GU, ME, RH, DA, BR, CR, SM, KT, TW, SW, SE, W, WC, EC, E, N, NW, HA, UB, EN, IG, GU, WD
- Andy Bishop**
07595 205 268
abishop@docherty.co.uk
Postcode areas: AL, SG, CM, CO, IP, NR, NN, MK, SS, RM, CB



- 1 Docherty Group**
Crowley Road, Swalwell
Gateshead
Tyne and Wear, NE163HF
T: **0191 488 1111**
F: 0191 488 0088
- 2 Docherty Group**
Unit 7, Overland Park
Gelder Road
Leeds, LS27 7JN
T: **01132 381200**
F: 01132 381044
- 3 Docherty Group**
Unit 2, Rivington Court
Hardwick Grange
Warrington, WA1 4RT
T: **01925 807950**
F: 01925 807959

- 4 Docherty Group**
Unit 15, Robin Hood Street Ind. Est.
off Alfred Street South
Nottingham, NG3 1GE
T: **01159 584734**
F: 01159 502899
- 5 Docherty Group**
Flue House, 55 Woodburn Road
Birmingham
West Midlands, B66 2PU
T: **0121 555 6789**
F: 0121 555 6727
- 6 Docherty Group**
Flue House, Portway Trading Estate
Portview Road
Bristol, BS11 9LQ
T: **0117 982 8252**
F: 0117 982 8225
- 7 Docherty Group**
Units 15/16 Colthrop Business Park
Colthrop Lane, Thatcham
Berkshire, RG19 4NB
T: **01635 292400**
F: 01635 201737
- 8 Docherty Group**
Unit C Station Yard, Coombe Road
Norbiton, Kingston
Surrey KT2 7AZ
T: **020 8391 0093**
F: 020 8397 7687
- 9 Docherty Group**
Unit 20, Flightway Business Park
Dunkeswell, Devon, EX14 4RD
T: **01404 890098**
F: 01404 891112

- 10 Sure Fire Training Services**
Unit E, Fairview Buildings
Heage Road Industrial Estate
Ripley, Derbyshire, DE5 3GH
T: **0845 2600 166**
F: 0845 2600 266
E: info@surefire.org.uk
- 11 Adina Heating Products**
Unit C, Fairview Buildings
Heage Road Industrial Estate
Ripley, Derbyshire, DE5 3GH
T: **01773 571 330**
F: 01773 367 989
E: sales@adinaheating.co.uk

www.docherty.co.uk

Group Head Office
Units 15/16 Colthrop Business Park
Colthrop Lane, Thatcham
Berkshire, RG19 4NB
T: **01635 292400**
F: 01635 201737 E: info@docherty.co.uk



Specialist distributor of **flues, chimneys & renewable appliances**