

BLUEPYC

Unconventional. Smart. Wireless.

BLE Beacon Family

Bluetooth® Low Energy Beacons

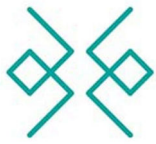


How it works

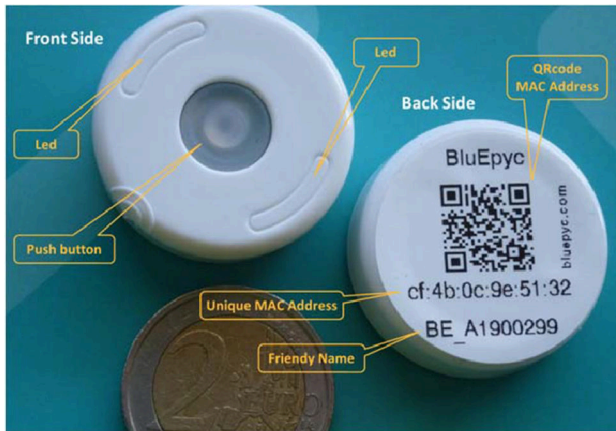
- ❖ Tag Beacon linked to person/item transmit the data with limited power & energy consumption.
- ❖ Advertising Interval and Transmission Power (communication distance) can be set via software.
- ❖ Beacons are also available with accelerometer, temperature and humidity sensors.

Highlight

- ❖ **Low cost devices** to implement micro localization & track position of people & objects wearing Beacons.
- ❖ **IoT & Active RFID application.** Real Time Location System & Indoor Positioning System (zone method).
- ❖ **Battery** can be easily replaced thanks to the interlocking open/close system of the ABS/plastic case.
- ❖ **Reading distance** can reach 100 meters in open spaces.
- ❖ **Small dimensions** and **mounting accessories** allow easy use in both indoor and outdoor situations
- ❖ **Some application scenarios:** vehicle & people access control (also stand alone), home & building management , safety (hospital, construction site, etc...), process automation, asset & facility management, smart city (parking, leisure & tourism, etc...)



BE Disk Family R2



BE-DSK2-BLE	BLE Disk Beacon R2 standard
BE-DSK2-A-BLE	BLE Disk Beacon R2 with accelerometer Sensor
BE-DSK2-TH-BLE	BLE Disk Beacon R2 with temperature and humidity Sensor
BE-DSK2-ATH-BLE	BLE Disk Beacon R2 with accelerometer, temperature and humidity Sensor

Common Features

- ❖ ON/OFF push button (additional functions: reset, alarm). 2 Led: blue & red.
- ❖ Label with Mac Address (QRcode) & Friendly Name (easy association and coding).
- ❖ Waterproof with seal and easy open/close system.
- ❖ Operation Frequency: 2400-2483,5MHz - IEEE Standard: 802.15.1 (Bluetooth Low Energy)
- ❖ Transmission distance: up to 120 meters (in open air).
- ❖ Transmission Power: 4 different levels can be set via OTA (-23dB, -6dB, 0dB, 4dB)
- ❖ Transmission interval can be set via software OTA (from 100 msec. to 10 sec. in step of 100ms).
- ❖ Battery: Panasonic replaceable CR2032 3V Li. Battery life: 1 year based on broadcasting rate 1 sec. @ 0dB RF power. Accurate digital RSSI
- ❖ Operating System Supported: iOS and Android. iBeacon or Eddystone standard.
- ❖ Size: 31 mm diameter, 10 mm thickness. Weight: 4,2 gr. Material: PC (Polycarbonate)
- ❖ Mounting accessories IP67 available for outdoor use
- ❖ Different colors available. Customizable with color printing of logos
- ❖ **Accelerometer, temperature and humidity sensors available**

Silicone Accessories - IP67



- BE-PC-ACC** - Silicone 'Protection Case' Accessory
- BE-WS-ACC** - Silicone 'Wristband' Accessory.
- BE-WM-ACC** - Silicone 'Wall Mount' Accessory
- BE-KF-ACC** - Silicone 'Keyfob' Accessor