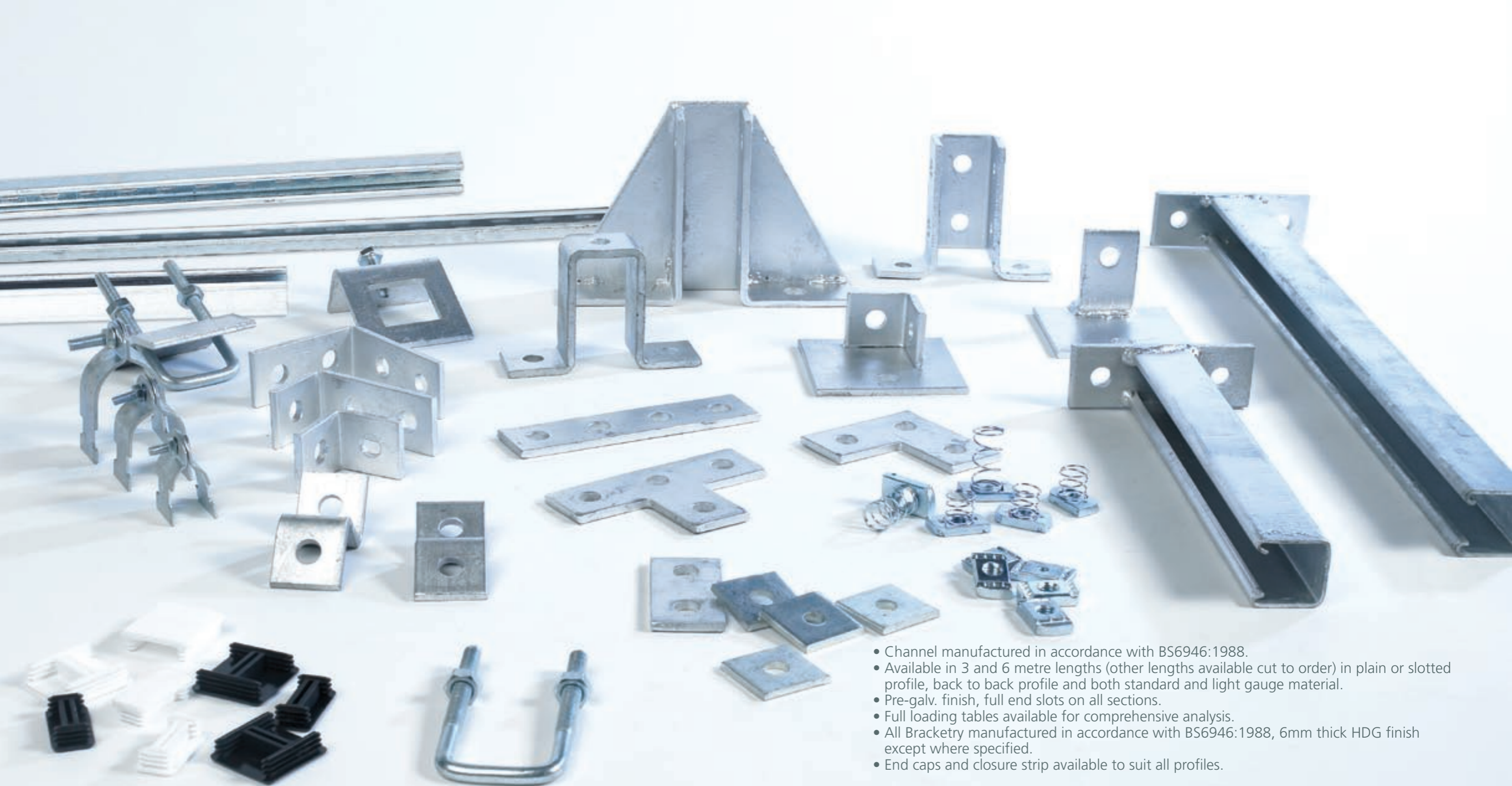


CHANNEL, ACCESSORIES & BRACKETRY RANGE

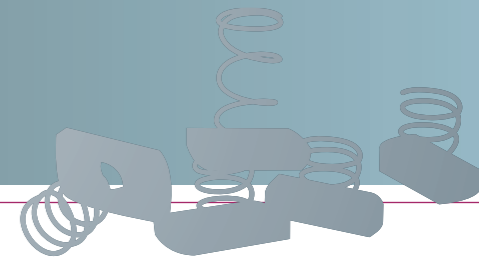


- Channel manufactured in accordance with BS6946:1988.
- Available in 3 and 6 metre lengths (other lengths available cut to order) in plain or slotted profile, back to back profile and both standard and light gauge material.
- Pre-galv. finish, full end slots on all sections.
- Full loading tables available for comprehensive analysis.
- All Bracketry manufactured in accordance with BS6946:1988, 6mm thick HDG finish except where specified.
- End caps and closure strip available to suit all profiles.

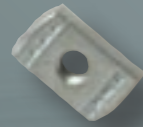
Our channel support system is now certified in accordance with BSI guidelines.

Loading tables, safe working loads and full test analysis, available on request along with certification of conformance.

CHANNEL, ACCESSORIES & BRACKETRY RANGE

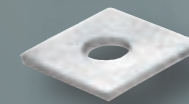


PLAIN CHANNEL NUTS



Size	Box quantity	Pack quantity	part no.
M6	100	600	SZ0660/P
M8	100	600	SZ0860/P
M10	100	600	SZ1060/P
M12	100	600	SZ1260/P

SQUARE PLATE WASHER BZP



Galvanised finish also available

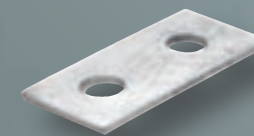
Size	Pack quantity	part no.
M8	200	SZ0842/6
M10	200	SZ1042/6
M12	200	SZ1242/6

CHANNEL NUTS c/w SHORT SPRING



Size	Box quantity	Pack quantity	part no.
M6	100	600	SZ0660/S
M8	100	600	SZ0860/S
M10	100	600	SZ1060/S
M12	100	600	SZ1260/S

2 HOLE PLATE



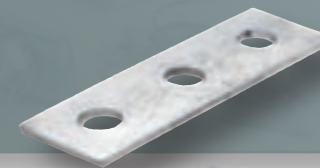
Pack quantity	part no.
150	GB02

CHANNEL NUTS c/w LONG SPRING



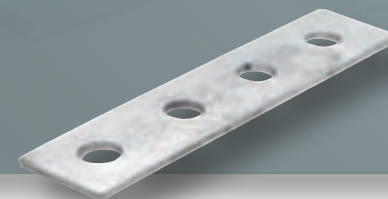
Size	Box quantity	Pack quantity	part no.
M6	100	600	SZ0660/L
M8	100	600	SZ0860/L
M10	100	600	SZ1060/L
M12	100	600	SZ1260/L

3 HOLE PLATE



Pack quantity	part no.
100	GB03

4 HOLE PLATE



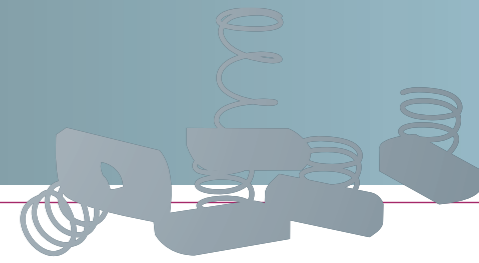
Pack quantity	part no.
50	GB04

5 HOLE PLATE



Pack quantity	part no.
50	GB05

CHANNEL, ACCESSORIES & BRACKETRY RANGE

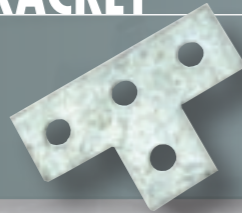


FLAT 'L' BRACKET



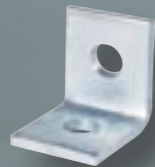
Pack quantity	part no.
100	GB06

FLAT 'T' BRACKET



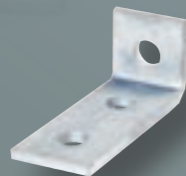
Pack quantity	part no.
60	GB07

90° BRACKET - 1x1 Hole



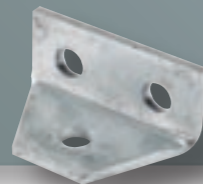
Size mm	Pack quantity	part no.
48x50	150	GB08A
57x42	150	GB08B

90° BRACKET - 2x1 Hole



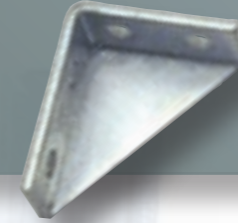
Size mm	Pack quantity	part no.
96x50	100	GB09
102x42	100	GB09A
90x57	100	GB09B

90° DELTA BRACKET - SMALL



Pack quantity	part no.
50	GB10

WELDED ANGLE BRACKET



Pack quantity	part no.
50	GB11

90° DELTA BRACKET - LARGE



Pack quantity	part no.
50	GB12

90° BRACKET - 2 x 2 HOLE



Pack quantity	part no.
70	GB13A

90° BRACKET - 3 x 1 HOLE



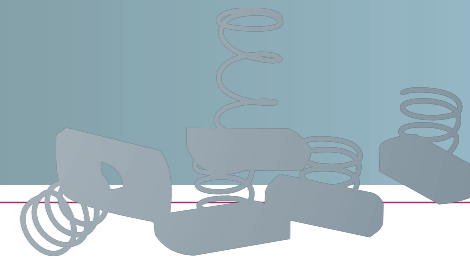
Pack quantity	part no.
50	GB14

90° 'T' LEFT HANDED BRACKET

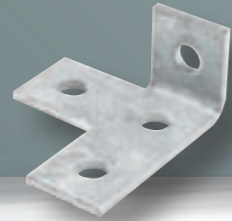


Pack quantity	part no.
60	GB15

CHANNEL, ACCESSORIES & BRACKETRY RANGE



90° 'T' RIGHT HANDED BRACKET



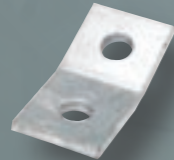
Pack quantity	part no.
60	GB16

90° ANGLE 'T' BRACKET



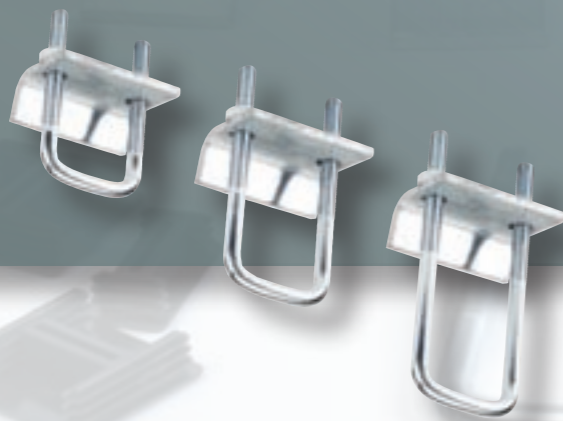
Pack quantity	part no.
50	GB17

OBTUSE ANGLE BRACKET - 22.5°



Pack quantity	part no.
50	GB18

BEAMCLAMP & 'U' BOLT M10



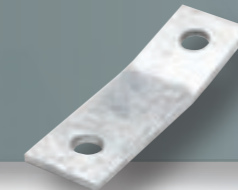
Channel size	Pack quantity	part no.
Half	50	GB1921
Full	50	GB1941
Double	50	GB1982

WINDOW BRACKET - c/w Cone Pointed Set Screw



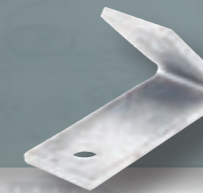
Channel size	Pack quantity	part no.
Half	50	GB2021
Full	50	GB2041
Double	50	GB2082

OBTUSE ANGLE BRACKET - 15° Other Angles Available In Stock



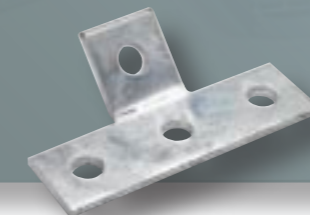
Pack quantity	part no.
50	GB23

ACUTE ANGLE BRACKET - 45°



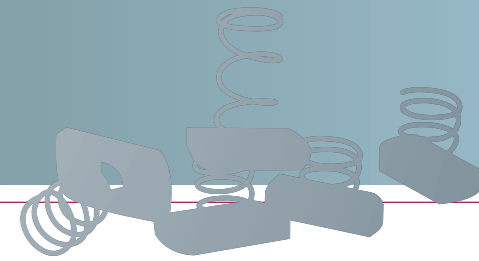
Pack quantity	part no.
50	GB24

ACUTE 'T' ANGLE BRACKET



Pack quantity	part no.
50	GB25

CHANNEL, ACCESSORIES & BRACKETRY RANGE

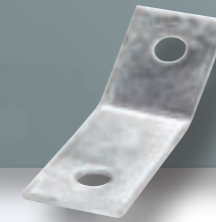


BEAMCLAMP M10



Pack quantity	Channel size	part no.
25	Half	GB2621
25	Full	GB2641

OBTUSE ANGLE BRACKET - 45°



Pack quantity	part no.
50	GB30

SINGLE 'Z' BRACKET



Pack quantity	part no.
100	GB27

'Z' TYPE BEAMCLAMP - M10 (10°Pitch)



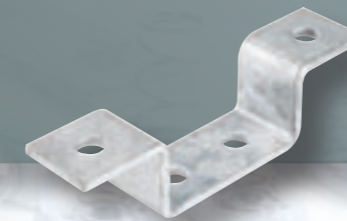
Pack quantity	part no.
100	GB31

DOUBLE 'Z' BRACKET



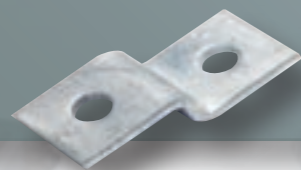
Pack quantity	part no.
50	GB28

DOUBLE WIDE TOP HAT BRACKET



Pack quantity	part no.
25	GB32

SHALLOW 'Z' BRACKET



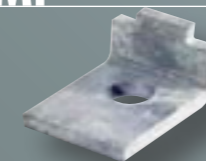
Pack quantity	part no.
100	GB29

DOUBLE CHANNEL BRACKET



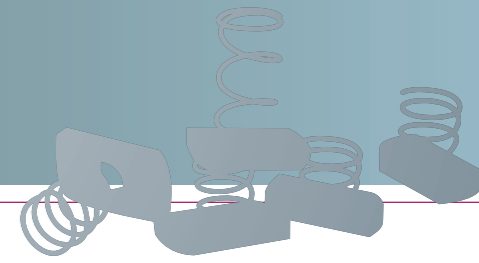
Pack quantity	part no.
50	GB33

BEAMCLAMP



Pack quantity	part no.
200	GB34

CHANNEL, ACCESSORIES & BRACKETRY RANGE



BASE PLATE DOUBLE CHANNEL



Pack quantity	part no.
20	GB36

BEAMCLAMP M10



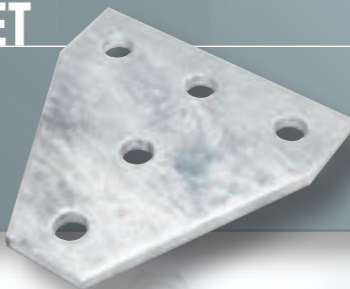
Pack quantity	part no.
100	GB37

CROSS PLATE



Pack quantity	part no.
100	GB39

GUSSET 'T' BRACKET



Pack quantity	part no.
100	GB45

CHANNEL 'T' BRACKET



Pack quantity	part no.
10	GB46

DELTA PLATE



Channel size	Pack quantity	part no.
Half	10	GB4721
Full	10	GB4741
Double	10	GB4782

CANTILEVER ARM



Length	Pack quantity	part no.
150mm	10	G68150
300mm	10	G68300
450mm	10	G68450
600mm	10	G68600
750mm	10	G68750

CHANNEL TOP HAT BRACKET



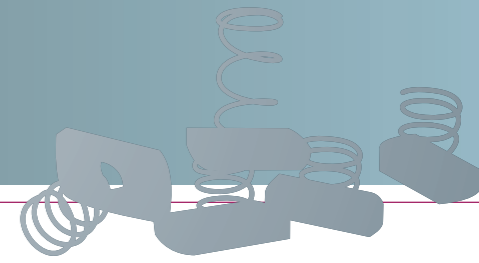
Channel size	Pack quantity	part no.
Half	50	GB4020
Full	50	GB4040
Double	25	GB4080

EXTERNAL CHANNEL CONNECTOR

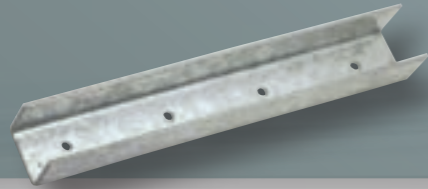


Channel size	Pack quantity	part no.
Half	20	GB41A21
Full	20	GB41A41

CHANNEL, ACCESSORIES & BRACKETRY RANGE



INTERNAL CHANNEL CONNECTOR



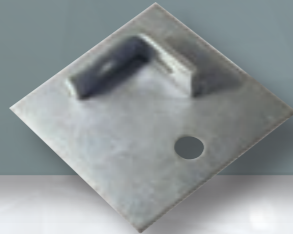
Channel size	Pack quantity	part no.
Half	40	GB42A21
Full	40	GB42A41

CHANNEL END CAPS - PVC



Size	Colour	Bag quantity	Pack quantity	part no.
41x41	Black	100	400	GB2241
41x21	Black	100	800	GB2221
41x41	White	100	400	GB2241W
41x21	White	100	800	GB2221W

BASE PLATE DOUBLE FIX



Pack quantity	part no.
40	GB43

BASE PLATE SINGLE FIX



Pack quantity	part no.
40	GB44

WHITE PVC CLOSURE STRIP - To suit 41x41 channel



Length	part no.
3m	PL4141W3

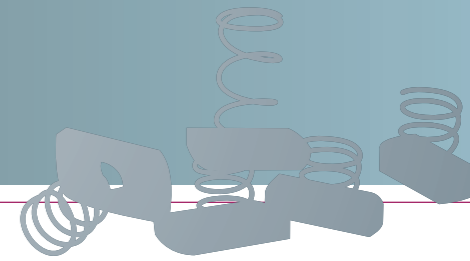
CHANNEL CLAMP

Pre galv. finish, c/w Nut & Bolt

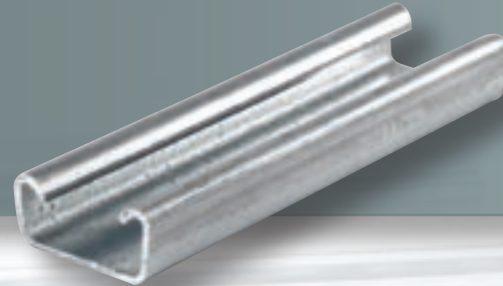


N.B. tube	N.B. metric	Pack quantity	part no.
1/2"	15mm	100	G6915
3/4"	20mm	100	G6917
1"	25mm	100	G6920
1 1/4"	32mm	100	G6923
1 1/2"	40mm	150	G6924
2"	50mm	100	G6927
2 1/2"	65mm	100	G6930
3"	80mm	50	G6933
4"	100mm	50	G6937
5"	125mm	50	G6940
6"	150mm	50	G6942
8"	200mm	50	G6947
10"	250mm	20	G6951
12"	300mm	20	G6955

CHANNEL, ACCESSORIES & BRACKETRY RANGE

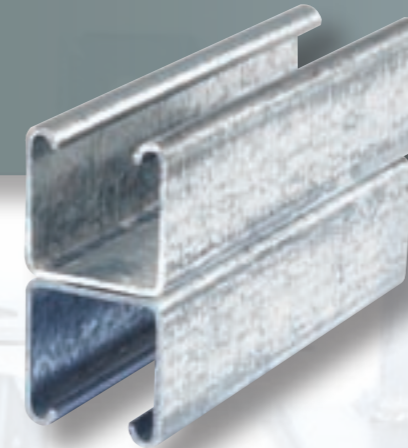


HALF CHANNEL STD. GAUGE - PLAIN 2.5mm thick



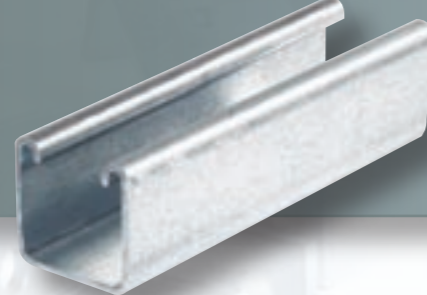
Size	Pack quantity	part no.
41x21x3m	50	CH4121P3
41x21x6m	50	CH4121P6

BACK-TO-BACK STD. CHANNEL - PLAIN 2.5mm thick



Size	Pack quantity	part no.
41x82x3m	25	CH4141P3B
41x82x6m	25	CH4141P6B

FULL CHANNEL STD. GAUGE - PLAIN 2.5mm thick



Size	Pack quantity	part no.
41x41x3m	50	CH4141P3
41x41x6m	50	CH4141P6

HALF CHANNEL STD. GAUGE - SLOTTED 2.5mm thick

28x14mm full slots



Size	Pack quantity	part no.
41x21x3m	50	CH4121S3
41x21x6m	50	CH4121S6

FULL CHANNEL STD. GAUGE - SLOTTED 2.5mm thick

28x14mm full slots



Size	Pack quantity	part no.
41x41x3m	50	CH4141S3
41x41x6m	50	CH4141S6

Also available from stock:

- Light gauge (1.5mm thick) Plain and Slotted channel with 25x11mm slot sizes. Please suffix codes with 'LWT'.
- Other lengths available from stock cut to order. Cutting surcharge may apply.