

PETAL

Cubicle + Washroom Systems

Uniclass
L2226

CI /SfB

(22.3)

X

September 2011

Design that lasts



PETAL

Cubicle + Washroom Systems

About Petal	03/14
Cubicle Systems	15/46
Duct and Access Panel Systems	47/52
Vanity Systems	53/58
Technical	59/68
Sales & Support	69/70

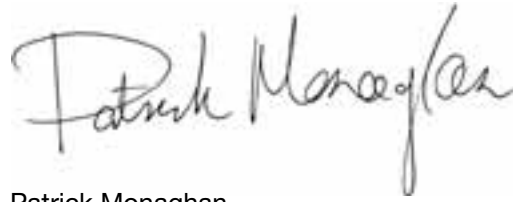


We have been designing, building and installing hard working washrooms for the past 30 years and from experience we know that our products stay working, month in, year out. We understand that our clients value our attention to detail and the fact that they can rely on Petal to deliver consistent results on every project.

More than ever we recognise that the markets' needs can change, which is why we have developed our new collection, packed with new ideas, materials and options guaranteed to deliver total satisfaction for our clients.

As always, we remain open to whatever washroom challenges you may have and our team is ready and willing to go the extra mile to make it happen within your budget and timescale.

Thank you for considering Petal as your partner for washrooms.



Patrick Monaghan
Managing Director



Responding to your washroom needs



“If every supplier was as professional as Petal, then my job would be a lot easier.”

Client, Project Manager.

Service

Our service begins when you refer to our comprehensive website resource or contact one of our Area Managers who each have many years of experience delivering effective washroom solutions.

From the outset we will respond to your exact needs from our extensive range of cubicle, wall panelling and vanity systems. Important factors such as budget, privacy options, washroom traffic levels and moisture conditions will be discussed at this stage.

When we understand your unique needs we will make recommendations based on system type and material choice best suited to the application. You will then be able to choose finishes from the extensive Petal material selector.

Choice

While cubicles, panelling and vanities are all available in a standard range of formats and finishes, we will not let this be a barrier to supplying any non standard or bespoke requirements which would enhance your project.

Our Design Plus options introduce an exciting range of material and graphic alternatives for a really special project.

Prior to submitting your scheme to our estimating department, our Area Manager will explain the procurement options available, either supply only or our supply and fit package, where expert and fully trained Petal installation teams are on hand to fit your washroom to perfection.

Commitment

Our commitment is to transparent quotations and our estimating department will provide you with prices for each element of the work in your project. Upon receipt of your order, our CAD department will prepare detailed working drawings for the scheme based upon the elements you have chosen.

At every stage of the process, we want you to be delighted with the level of service provided. You will be given a single point of contact who will liaise with you throughout the entire project, starting with the initial site survey right up to final completion.



Our tests go further, because we understand how things are in the real world, in the club, school or factory. We have created tests to push our products further than other manufacturers.

That's why we can say with confidence -

Design th



A programme of independent testing of Petal cubicles has been established to validate the ability of the product to withstand even extreme personal attack. These tests simulate large soft body impacts of up to 134Nm impact energy. Tests employing a 50kg impactor are carried out at a variety of likely impact points - kick height, shoulder charge etc. The Petal product is found to withstand tests without failure and when measured against British Standard BS5234-2:1992 it is classified as suitable for Severe Duty Applications.



Design that lasts

Experience

With over 30 years of designing, manufacturing and installing these products, we think we have learnt a lot about what works and what does not in a busy modern washroom.

This has led us to adopt a rigorous testing regime, structured to create some of the most extreme conditions that our products are likely to encounter.

This provides the specifier with an extra degree of confidence, safe in the knowledge that by choosing a Petal product, every aspect of the design has been checked and tested to ensure that the client will experience faultless performance.

Rigorous Testing

Here at Petal, nothing is left to chance! We test continuously to ensure that all our components will perform to the highest standards. Hinges, indicators and fixings are all tested to ensure that they will work year after year.

With the collaboration of a local university, which also certifies our results, we have devised an impact testing procedure for our cubicle systems.

This test replicates the most extreme impacts likely to be inflicted by washroom users and which can seriously challenge the structural stability of the cubicle system.

Our commitment to quality is confirmed by our ISO 9001:2008 certification.

Highest Standards

At Petal we do not make compromises, so you may notice that we do not offer rock bottom prices.

The reason for this is simple!

From our long market experience, we frequently see evidence of rock bottom performance from others' failed washroom products which were supplied to a price but neither designed nor built to last.

Since we take care with the hidden details of our washroom systems, the final results are impressive. Wherever possible, we use full length channels instead of patch fittings as these provide additional stability, protect panel edges and leave the washroom system easier to clean.

We use only the best materials available and we never compromise on ideas or solutions which we know will not survive the test of time.

Total Washroom Solutions



Delivering well planned and hard working washroom projects requires a co-ordinated approach which is something we excel at. Our approach, backed up by our extensive range of products, ensures we can offer clients options at each stage of the specification process.

Cubicles

Choose from our selection of cubicle ranges which cover all design, function and budget options including specialist selections for Education and for Leisure applications.

See Page 15/16



Duct and Access Panel Systems

Our range of wall duct and access panel systems, which includes pre-plumbed modules, can be specified according to material choice for performance options and configurations based on aesthetic preferences.

See Page 47/48



Vanity Systems

The choice of materials is vast and can be applied to our standard vanity styles. In addition, we can offer bespoke solutions to enhance the most exacting projects.

See Page 53/54.



To speak to a member of our sales team -
call 00800 1981 1981 or email support@petal.co.uk.

www.petal.co.uk

Supply and Fit

Every detail counts and when it comes to installation, Petal are ideally placed to deliver a perfect fitting solution, first time and every time.



At Petal we always focus on getting the detail right. Having designed and manufactured first class products, we want to ensure that they are installed in a way which will ensure they perform to their full potential.

The Petal supply and fit service is the ideal route to trouble-free washroom installations. Our expert fitting teams are thoroughly trained on Petal systems and are experienced working in all types of potential applications from five star spas to year five schools.

Work starts when our team takes accurate measurements of the site and looks for early signs of any unusual features which might cause unnecessary challenges later in the project.

Each scheme is carefully drawn and documented, continuing as a bespoke project through our design and manufacturing departments before co-ordination of components ready for dispatch to the specific fitting team allocated to the job.

Health and safety is a top priority while on-site to ensure that the project progresses quickly and safely with the minimum impact on other teams within the building.

Through our management of the project through to final hand over we remove risk and save time for the client.

“Petal scored 5 out of 5 across the board, the installation team were first class and the finished product is excellent and looks very smart.”

Managing Director, Main Contractor, Cambridge



Supply Only

There may be occasions where Petal product will be installed by a third party due to the contractual arrangements on a building project or due to the client's preference. On such occasions Petal will efficiently handle the dispatch and co-ordination of systems with the client's contractor.

Materials, Finishes & Colours



HPL

Our HPL panels are manufactured from two skins of decorative High Pressure Laminate bonded to a moisture resistant core board, creating a strong robust panel suitable for use in dry environments.

The HPL panels may be square edged with matching laminate or post formed along two edges.



CGL

Compact Grade Laminate is an extremely high performing waterproof material suitable for use in the most demanding washroom environments.

The CGL panels are finished with soft radiused edges and panel corners are also radius curved for user comfort.



Veneer

Rich wood veneers are bonded to moisture resistant core boards and depending on panel thickness may be edged in hardwood.

Veneer covered panels are suitable for light use in dry environments only.

With more than 50 colour choices in a range of materials, the Petal Colour Collection is far from standard. Use this guide to help you select the most appropriate material specification for your project.



Glass

Glass panels for doors or complete cubicles create high performing systems for use in wet or dry environments.

A luxurious ambience can be created in any washroom situation by the use of glass panels.

The astute use of other materials, such as HPL, Veneer or CGL can achieve the required effect and also meet any budget constraints.



Colour Choice

See our Colour Collection chart for full details of our extensive standard range.

Please ask for details of our Design Plus range of bespoke options for an extra wow factor in your washroom project.

Design Plus

Petal Design Plus is a range of exciting ideas which offers endless ways to inject serious wow factor into any washroom or changing room project. With an emphasis on personality and personalisation, we have introduced the art of the possible into washroom designs through the application of the latest materials and digital manufacturing technologies.

Design Plus is a bespoke service offered by Petal. This is just an introduction to the range and scope of the options available, as it is impossible to explore the full opportunities within a few pages.

If you are looking for something really special beyond the 50 options contained in our Colour Collection brochure, then please talk to us about your ideas and requirements. We are confident that we can bring the wildest creations of your imagination into reality.



Materials

Premium laminates can deliver both unique visual and tactile finishes to create interest in both panelling and system components. Design Plus extends the colour range and introduces creative surfacing to create an entirely different look and feel compared with traditional laminates. Alternatively, create a sense of substance and style through the use of premium textured laminates that will set any project apart.

The latest glass technology can deliver stunning finishes, colours and even encapsulated print effects. Glass can be incorporated into a range of specific cubicles as well as being used for wall panels and vanity surfaces.

Bespoke Systems

Petal Design Plus also offers a fully bespoke manufacturing service to deal with any special requests which are required to make your design a reality.

Imaging

Through the use of the latest digital imaging technology we can deliver highly personalised solutions for individual projects. Any image, logo or design can be applied in part or throughout a scheme with dramatic effect.

It is easy to begin to imagine how Design Plus could be utilised in any sports arena, cinema, theatre, in fact any application where you may want the washrooms or changing

facilities to become part of the overall experience. This technology can be applied even if there is only one application.

The opportunity to repeat a special design could be a very powerful branding tool in the retail, hotel and hospitality sector. Utilise unique imagery, brand or messages to stay connected with your market.



Surface View®

Surface View® is unique. By searching out fabulous, famous and fun images from an eclectic range of sources they have compiled a vast collection of designs.

Formica Group are happy to offer exclusive access to this range in High Pressure Laminate for many interesting applications.



Cubicle Systems

A photograph of a row of three cubicles. Each cubicle has a door with a vertical wood-grain pattern. The doors are separated by vertical panels with a blue-grey metallic finish. Each door has a small circular lock or handle. The cubicles are set against a light-colored wall and a dark, reflective floor.



Selecting the right cubicle system



Usage

HPL and Veneer cubicles are suitable for dry environments only. Choose CGL and Glass for use in wet environments.

Privacy

Floor to ceiling (FTC) options offer enhanced privacy.

Price Level

Price levels are an indication based on standard size cubicles in standard materials.

Using this product guide, please follow the selection guidelines within each of the product sections.

Education	<i>Wet/Dry Environment</i>	<i>Price Level</i>	<i>Material</i>	<i>Cubicle</i>	<i>Shower</i>	<i>Privacy</i>
	Standard Cubicle	2	CGL	Thor	Yes	Std
	Full Height Cubicle	3	CGL	Apex	Yes	FTC
	Child Friendly with Headrail	2	CGL	Chico	-	Std
	Infant Friendly - Freestanding	2	CGL	Beep	-	Std
Leisure	<i>Wet/Dry Environment</i>	<i>Price Level</i>	<i>Material</i>	<i>Cubicle</i>	<i>Shower</i>	<i>Privacy</i>
	Standard Cubicle	2	CGL	Thor	Yes	Std
	Public Pools	4	CGL	Action	Yes	Std
	Spa Pools	6	Glass	Aspect	Yes	Std
		4	CGL	Aspect	Yes	Std
		5	CGL	Elan	Yes	Std
		6	Glass	Elan	Yes	Std
General	<i>Dry Environment</i>	<i>Price Level</i>	<i>Material</i>	<i>Cubicle</i>	<i>Shower</i>	<i>Privacy</i>
		1	HPL	Brio	-	Std
		2	HPL	Duo	-	Std
		3	HPL	Fin	-	Std / FTC
		3	HPL	Arc	-	Std
		4	HPL	Line	-	Std
		4	Veneer	Line	-	Std
		4	HPL	Spirit	-	Std / FTC
		6	HPL	Esteem	-	FTC
		6	Veneer	Esteem	-	FTC
General	<i>Wet/Dry Environment</i>	<i>Price Level</i>	<i>Material</i>	<i>Cubicle</i>	<i>Shower</i>	<i>Privacy</i>
		2	CGL	Duo	Yes	Std
		3	CGL	Isis	Yes	Std
		3	CGL	Fin	Yes	Std / FTC
		3	CGL	Arc	Yes	Std
		4	CGL	Line	Yes	Std
		4	CGL	Spirit	Yes	Std / FTC
		6	Glass	Spirit	Yes	Std / FTC
		6	Glass	Aspect	Yes	Std
		5	CGL	Elan	Yes	Std
		6	Glass	Elan	Yes	Std

Contemporary yet affordable, Brio features satin aluminium pilaster edgings with the option of colour co-ordinating the HPL pilaster inserts. Although Brio has an elegant, minimalist appearance, it features robust 20mm HPL panels, full length channel fixings plus a structural headrail to ensure that this cubicle will perform perfectly in its recommended environment.

On a practical level Brio's inline design accommodates both inward and outward openings seamlessly. When you need economy but don't want to sacrifice style, then Brio is the ideal solution.

Brio



Pictured above - Brio profile detail

Suitability

General use, dry environments

Price Level

1

Material Option

20mm HPL

Pilasters

Aluminium/HPL

Colour

Petal HPL range

Head Clearance Height

1950mm

Overall Cubicle Height

1975mm

Privacy Design

150mm floor clearance

Doc M Compliance Options

Inline inward and outward openings

Enlarged and ambulant

Emergency release indicator

Duo is one range with two very different looks. If you want the traditional curves of a 30mm thick postformed pilaster then choose Duo in the HPL version. Alternatively, if curves are not really what you want, then specify Duo in 12mm CGL featuring bull nosed edges and gain the extra benefit of suitability for use in wet areas.

Whichever look you choose, each cubicle gains durability from the semi framed continuous leg, while configuration options include standard inward opening and disabled outward opening doors set to the front of the pilasters. All in all a great value range capable of performing well in many applications.

Duo



Pictured above - Duo profile detail

Suitability

HPL - General use, dry environments
CGL - General use, wet or dry environments

Price Level

2

Material Option

20mm HPL
12mm CGL

Pilasters

Postformed 30mm HPL
Radiused edge 12mm CGL

Colour

Full Petal HPL & CGL range

Head Clearance Height

1950mm

Overall Cubicle Height

HPL 1995mm
CGL 2000mm

Privacy Design

150mm floor clearance

Doc M Compliance Options

Inline inward and outward openings
Enlarged and ambulant
Emergency release indicator

Designed for use in wet areas, Isis is both water resistant and stylish with the combination of attractive satin anodized pilaster edges and 12mm solid grade laminate. This hard-wearing system features a set back pedestal leg, continuous channel fixings to all panels plus a strong headrail profile. The full colour range of CGL is available in Isis to accommodate all tastes from fresh bright schemes to more formal ambience provided by wood grain laminates. On a practical level the stylish inline design accommodates both inward and outward openings seamlessly.

Isis



Pictured above - Isis profile detail

<p>Suitability General use, wet or dry environments</p>	<p>Head Clearance Height 1950mm</p>
<p>Price Level 3</p>	<p>Overall Cubicle Height 1975mm</p>
<p>Material Option 12mm CGL</p>	<p>Privacy Design 150mm floor clearance</p>
<p>Pilasters Aluminium/CGL</p>	<p>Doc M Compliance Options Inline inward and outward openings Enlarged and ambulant Emergency release indicator</p>
<p>Colour Full Petal CGL range</p>	

Clean contemporary themes in anodised aluminium with an attractive concave pilaster design adding a sense of style to any washroom. The system's look is continued through inline doors and a setback leg which creates an impression of the system appearing to float.

Arc's style has not come as a substitute for performance as this hard-wearing system features an integral headrail, continuous channel fixings throughout plus the option of CGL panels for use in wet areas.

Arc



Pictured above - Arc profile detail

Suitability

HPL - General use, dry environments
CGL - General use, wet or dry environments

Price Level

3

Material Option

20mm HPL
12mm CGL

Pilasters

Concave anodised aluminium

Colour

Full Petal HPL & CGL range

Head Clearance Height

1950mm

Overall Cubicle Height

2035mm

Privacy Design

150mm floor clearance

Doc M Compliance Options

Inline inward and outward openings

Enlarged and ambulant

Emergency release indicator

Fin's profiled aluminium pilasters make a strong architectural statement, guaranteed to bring a sense of quality to any washroom. This highly adaptable inline system accommodates almost every possible configuration with style including floor to ceiling installations, inward and outward openings plus selectable performance for wet or dry applications.

Fin complements a range of finishes making it a popular choice for all types of public applications. While full of features, Fin's simple design principle has been engineered as a mid price range option making it a realistic specification for a wide range of projects.

Fin



Pictured above - Fin profile detail

Suitability

HPL - General use, dry environments
 CGL - General use, wet or dry environments

Price Level

3

Material Option

20mm HPL
 12mm CGL

Pilasters

Elliptical anodised aluminium /
 HPL or CGL

Colour

Full Petal HPL & CGL range

Head Clearance Height

1955mm

Overall Cubicle Height

Option 1 - 2075mm
 Option 2 - floor to ceiling

Privacy Design

150mm floor clearance
 Full privacy floor to ceiling

Doc M Compliance Options

Inline inward and outward openings
 Enlarged and ambulant
 Emergency release indicator



Flush fronted with clean and minimalist styling, Line is finely detailed with rebated doors and set back pilaster feet that accentuate the system's unbroken smooth appearance. Full of features normally associated only with premium priced cubicles, Line offers modern washrooms all this and more as a mid price range option. A wide choice of panel options including rich real wood veneers add to the sense of quality and widen the possible usage of the system which features outward openings.

Line



Pictured above - Line profile detail

Suitability

HPL - General use, dry environments
 Veneer - General use, dry environments
 CGL - General use, wet or dry

Price Level

4

Material Option

30mm HPL
 30mm Veneer
 20mm CGL

Pilasters

Flush - HPL
 Flush - Veneer
 Flush - CGL

Colour

Full Petal HPL, CGL & Veneer range

Head Clearance Height

1950mm

Overall Cubicle Height

1975mm

Privacy Design

150mm floor clearance

Doc M Compliance Options

Inline inward and outward openings
 Enlarged and ambulant
 Emergency release indicator

Glass panels matched with curved aluminium profiles in a system with an upmarket persona but offering an exceptional balance between aesthetics and cost. Aspect is ideal for configuration with CGL dividers providing maximum value while maintaining wet use performance, without compromising the aesthetics of a glass facade. The doors in the Aspect cubicles are set behind the aluminium pilasters for a fully framed appearance and inward door opening movement.

Aspect



Pictured above - Aspect profile detail

Suitability

HPL - General use, dry environments
 CGL - General use, wet & dry environments
 Glass - General use, wet or dry environments

Price Level

4

Material Option

20mm HPL
 12mm CGL
 10mm Glass

Pilasters

Aerofoil shaped aluminium

Colour

Full Glass & Petal HPL & CGL range

Head Clearance Height

1950mm

Overall Cubicle Height

1980mm

Privacy Design

150mm floor clearance

Doc M Compliance Options

Inline inward and outward openings
 Enlarged and ambulant
 Emergency release indicator

Depart from the ordinary with Spirit's deep sweeping aluminium profile creating a sense of executive luxury accentuated through detailing at the base and headrail. As a perfect example of optimising form and function, Spirit will accommodate both standard height and floor to ceiling installations where maximum privacy is requested. Specify Spirit in any of our HPL, CGL, Veneer or Glass options to match the aspirations of the scheme while still complying fully with Doc M statutory demands.

Spirit



Pictured above - Spirit profile detail

Suitability

HPL - General use, dry environments
 CGL - General use, wet or dry environments
 Glass - General use, wet or dry environments

Price Level

4

Material Option

20mm HPL
 12mm CGL
 10mm Glass

Pilasters

Profile aluminium

Colour

Full Petal HPL & CGL range. Glass as specified

Head Clearance Height

1950mm

Overall Cubicle Height

2035mm

Privacy Design

50mm floor clearance
 Full privacy floor to ceiling

Doc M Compliance Options

Inline inward and outward openings
 Enlarged and ambulant
 Emergency release indicator



High on performance and versatility, Elan is the ultimate inline glass system designed to meet the uncompromised needs of exclusive applications where the washroom is a vital part of the overall building user's experience. Elan is the ideal system for exclusive multi-use applications combining washroom, showering and changing in a wet room environment. Architectural in form and scale, Elan is engineered to work in many different configurations and features striking fixings and internal headrail profile, fully compatible with a range of glass panel options.

Elan



Pictured above - Elan profile detail

Suitability

General and leisure use, wet environments including showers

Price Level

5

Material Option

10mm Glass
12mm CGL Divisions

Pilasters

10mm glass

Colour

Full Petal HPL & CGL range. Glass as specified

Head Clearance Height

1980mm

Overall Cubicle Height

2005mm

Privacy Design

150mm floor clearance

Doc M Compliance Options

Inline inward and outward openings
Enlarged and ambulant
Emergency release indicator

Esteem



A premium bespoke floor to ceiling system for washrooms demanding the highest levels of privacy, build quality and design flexibility. Esteem delivers the ambience of a hand built finish with invisible fixings, hardwood edgings, quality fittings and substantial 46mm doors. Nothing about your choice of colours or fittings need be standard as we will design and build your ideal washroom.

Please talk to us early in your project planning to ensure that your particular requirements can be met.

Esteem





Pictured above - Esteem profile detail

Suitability

General use, dry environments

Price Level

6

Material Option

46mm HPL
46mm Veneer

Pilasters

46mm HPL
46mm Veneer

Colour

Full Petal HPL & Veneer range

Head Clearance Height

Made to order (MTO)

Overall Cubicle Height

Floor to ceiling - MTO

Privacy Design

Full privacy, floor to ceiling

Doc M Compliance Options

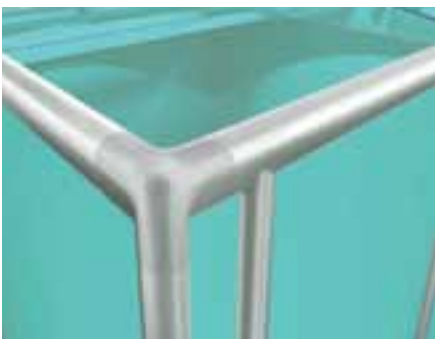
Inline inward and outward openings
Enlarged and ambulant
Emergency release indicator



Built for all day service in the most demanding pool, sports and leisure applications. Action is a fully framed self supporting system which will perform in linear and island configurations while withstanding the extremes of use and atmosphere experienced in both private and public sports centres. The fully integrated frame and headrail system with co-ordinated cappings and fittings have been designed with all installation practicalities and user comfort in mind.

The Action range is ideal for all high traffic areas including public, educational and sports club facilities. Petal also offers lockers for more bespoke applications such as golf clubs or private / hotel fitness facilities.

Action



Pictured above - Action profile detail

Suitability
CGL - Demanding, harsh use, wet or dry

Price Level
4

Material Option
12mm CGL

Pilasters
50mm circular satin aluminium posts/
CGL

Colour
Full Petal CGL range

Head Clearance Height
1956mm

Overall Cubicle Height
2006mm

Privacy Design
150mm floor clearance

Doc M Compliance Options
Inline inward and outward openings
Enlarged and ambulant
Emergency release indicator

Reliability in use is a top priority for every Petal system and Action is no exception with every detail being designed to last.



Action is a fully versatile system with possible uses as changing, showering or WC cubicles. The fully framed structure will accommodate all the applications found in a modern sports facility including walk through cubicles and family changing layouts.

Action's CGL panels are more than capable of withstanding the constant wet environments and daily cleaning schedule



Lockers

Action lockers are manufactured with 10mm CGL doors, full height aluminium bodies, and high impact polystyrene plastic tops, shelves and bases for lifelong service and are available in a comprehensive range of sizes and layouts. Also, locker doors are available in 10mm toughened glass at an additional cost.

Particular care has been taken with the specification and selection of the hinge mechanism which operates perfectly with the CGL door. All door edges are radiused and polished.

There is a wide range of lock options available, including cam locks, coin / token return or retention, hasp locks, card, digital etc. The Petal technical department will guide you through all the different options before you make your final selection.

Action lockers & benches



Benches

Action bench solutions comprises a range of sturdy frame options which can be cleverly configured in different ways to maximise the space available.

Options include -

- Self supporting wall mounted
- Leg supported wall mounted
- Freestanding
- Back to Back
- Coat rails may be stand alone or integrated

Each standard frame is fabricated in strong mild steel section and painted in a light grey powder coated finish making them suitable for use in wet or dry changing rooms.

Action benches are manufactured with waterproof Compact Grade Laminate in plank or slat formats, each with smooth edges and available in a wide range of sporting colours. Wooden slats in selected hardwoods are available.



Cubicle systems for nursery and education





We think we are top of the class when it comes to providing smart washroom solutions for projects in the education sector. But then we have been completing installations in schools for 30 years so we should know a thing or two about it by now. That's why our ranges carry a 10 year warranty.

Education

10 Year
Warranty



Design that lasts

Because we understand that education is one of the worlds' most demanding applications for washrooms we design products specifically for this market, rather than just repackage our existing ranges.

Trends change and research reveals new ideas but one thing that doesn't change is the value of our experience in this sector.



Panels

We use only Compact Grade Laminate (CGL) panels in our Education ranges because we know they will cope with all the water, heat and impact that they are likely to encounter in a busy education washroom. The polished edges of the panels are self sealed and so offer no opportunity for degradation through wear and tear.

Construction

Every Petal cubicle for the education sector has practicality at its core. Our aluminium profiles are both safe and practical in use with full length engagement at both panels and walls. In our semi framed ranges, strength is provided through the use of a continuous structural headrail which interlocks with the pilaster panel to give added integrity to the system.

Further strength is provided through the full length leg channels with integral foot design ensuring the most secure floor anchorage. All these features deliver considerable long lasting benefits in use. Experience tells us that an extremely stable cubicle is more resistant overall to damage.



Detailing

The detailing of hardware is child friendly, so our fittings and profiles are rounded, reflecting the needs of the users in the education sector. It is our priority that cubicles should deliver maximum service with minimum requirement for repair or maintenance. To ensure longevity we use three, not two hinges, which have been proven as being 100% reliable during testing.

Built to withstand the rough and tumble of the school environment Thor is a proven semi framed cubicle system guaranteed to meet the grade in any challenging environment. Strong aluminium profiles are matched with durable compact grade laminates and tamper resistant fixings with three hinges per door to ensure the maximum resistance against either wear and tear or vandalism. Thor has been designed and engineered to last. Specify index compliant colour schemes from our range of child friendly fresh and bright solid grade laminates. Thor is also available in a shower cubicle configuration.

Thor

10 Year Warranty



Pictured above - Thor profile detail

Suitability

Educational high use location, wet environments including showers

Price Level

2

Material Option

12mm CGL

Pilasters

Radiused edge 12mm CGL

Colour

Full Petal CGL range, including graphic prints

Head Clearance Height

1950mm

Overall Cubicle Height

2000mm

Privacy Design

150mm floor clearance

Doc M Compliance Options

Inline inward and outward openings

Enlarged and ambulant

Emergency release indicator



A full height cubicle with stylish inline aluminium pilasters which offers a full privacy washroom option ideal for all educational applications. Apex is an extremely robust system featuring full channel fixings at walls and floor, compact grade laminate and fully tested fittings designed to last in a challenging wet or dry environment. Equally appropriate in a staff room or sixth form centre the aesthetics of the system can be substantially altered through choice of laminate specified.

Apex

10 Year
Warranty



Pictured above - Apex profile detail

Suitability

General and educational use, wet environments including showers

Price Level

3

Material Option

12mm CGL

Pilasters

Radiused edge 12mm CGL

Colour

Full Petal CGL range, including graphic prints

Head Clearance Height

1950mm

Overall Cubicle Height

Height optional - max. floor to ceiling

Privacy Design

50mm floor clearance

Doc M Compliance Options

Inline inward and outward openings

Enlarged and ambulant

Emergency release indicator

Child friendly, attractive and practical for supervisory teachers and carers, Chico can be configured in 4 sizes accommodating children from the under 5's up to 11years old in four transitions. Chico features an integral headrail for exceptional stability and is manufactured throughout to withstand constant daily use. The system is suitable for all wet and dry nursery and school applications. A full range of compact grade laminates is available together with our colourful graphic options which can be combined in cubicle and wall panels for maximum fun.

Chico

10 Year
Warranty



Pictured above - Chico profile detail

Suitability

General and educational use, wet environments including showers

Price Level

2

Material Option

12mm CGL

Pilasters

Radiused edge 12mm CGL

Colour

Full Petal CGL range, including graphic prints

Head Clearance Height

1950mm

Overall Cubicle Height

2000mm

Privacy Design

150mm floor clearance

Doc M Compliance Options

Inline inward and outward openings

Enlarged and ambulant

Emergency release indicator

A fun, bright approach to the provision of a welcoming infant washroom environment featuring low level panels scaled to allow both child privacy and supervision of users by carers. Child friendly finishes include radiused edges and rounded corners on compact laminate panels while striking graphic options complete this ideal nursery solution. Beep is designed to last with a secure floor fixing and continuous wall channel making this a practical freestanding system.

Beep

10 Year Warranty



Pictured above - Beep profile detail

Suitability

General and educational use, wet environments including showers

Price Level

2

Material Option

12mm CGL

Pilasters

Radiused edge 12mm CGL

Colour

Full Petal CGL range, including graphic prints

Head Clearance Height

Fully clear

Overall Cubicle Height

Fully clear

Privacy Design

150mm floor clearance

Doc M Compliance Options

Inline inward and outward openings

Enlarged and ambulant

Emergency release indicator

Choice and Compliance

Petal offers a wide colour choice including fresh and bright Compact Grade Laminates with the additional option of fun, colourful graphicst hatc anb esp ecifiedo na nyo ft hee ducationra nges.

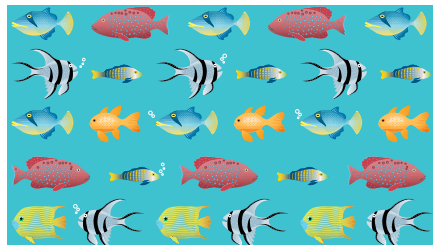
In addition, cubicles can be specified to meet all relevant standards including LRV index and special access requirements.



Daisy



Aqua



Numbers



Stars



Jungle



Doodles



Duct and Access Panel Systems





Petal offer a fully bespoke duct panelling service including pre-plumbed options that go beyond just matching our cubicle systems. Our flexible manufacturing processes and material options allow us to produce practical solutions that deliver exactly the style and performance you want in your washroom.

We understand that every duct panelling application is different and with unique needs. The demands of an executive washroom, hotel spa or school locker space will each be very different to a health centre treatment room or a visitor's washroom in a hospital. At Petal we focus on design and performance, matching the materials and panel configurations that will best meet the special needs of each project.

Panel Options





Four panel options are available.

There are a number of panel gap options available which cater for both aesthetic and practical needs depending on the application. In each case our sales or technical team will be able to advise which options we recommend for your project.



**P100
High Pressure Laminate (HPL)**

20mm thick panels finished with a straight edge finished in matching laminate giving a sharp clean appearance.

Suitable for most dry areas.

Veneers may also be specified.



**P200
High Pressure Laminate (HPL)**

20mm thick panels finished with post formed edges on the vertical for a softer aesthetic feel.

Suitable for most dry areas.



**P300
Compact Grade Laminate (CGL)**

12mm thick high performance panelling with soft radiused edges for use in wet environments, high wear areas or those requiring high levels of hygiene and robust cleaning regimes.



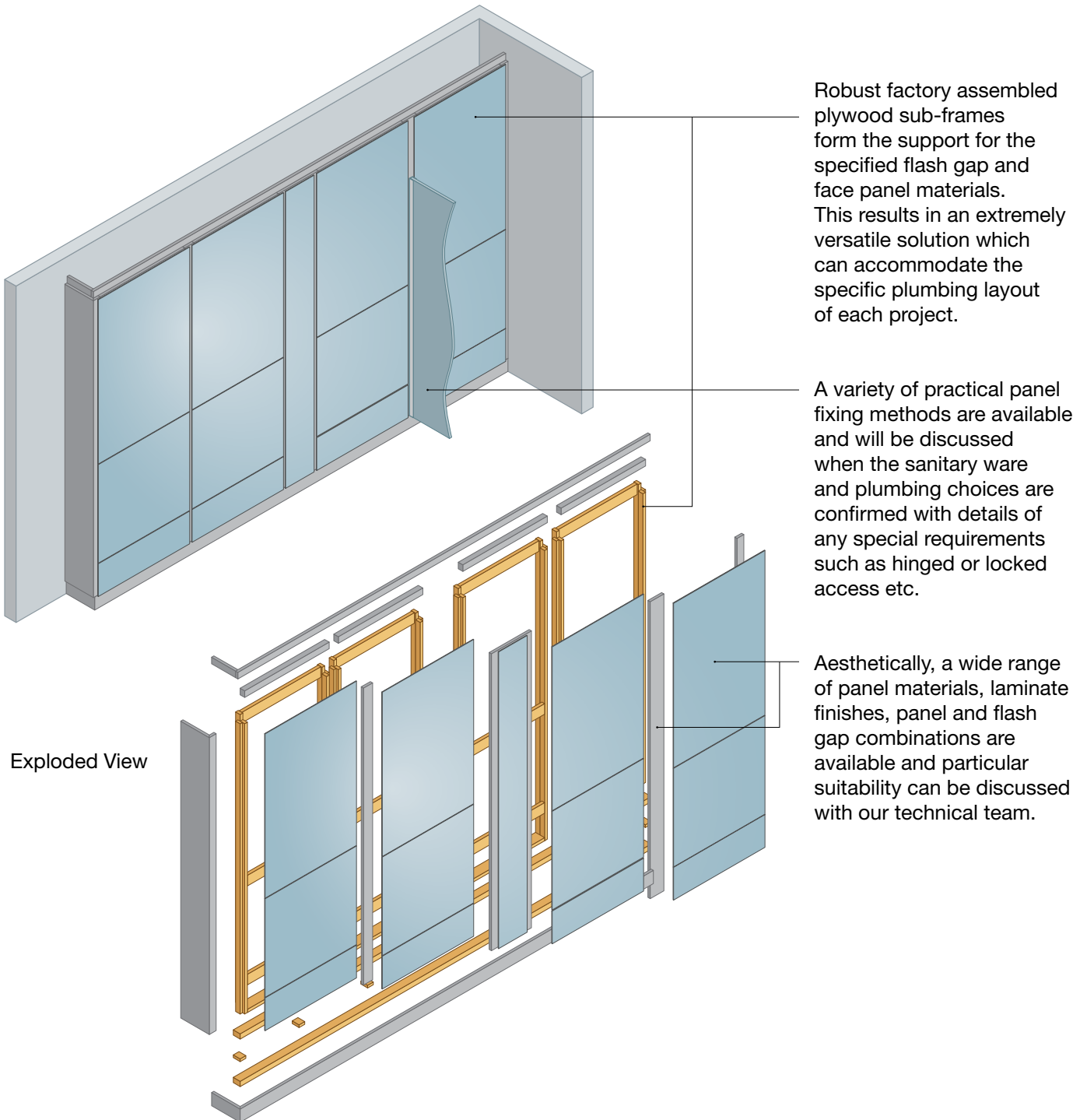
**P400
Glass / Laminate**

6mm toughened or laminated glass wall panels provide a prestigious and luxurious ambience and can produce that wow factor which 5 star establishments need to create.

The Petal duct panel system is highly versatile and can accommodate all wall and ceiling configurations. Our technical department will translate your washroom plans into a detailed duct panel system which will enhance any washroom environment.

Petal offer a fully bespoke service for duct panels so every system is produced in our workshops for efficient trouble-free installation on-site by our expert fitting teams.

Panel Overview



Robust factory assembled plywood sub-frames form the support for the specified flash gap and face panel materials. This results in an extremely versatile solution which can accommodate the specific plumbing layout of each project.

A variety of practical panel fixing methods are available and will be discussed when the sanitary ware and plumbing choices are confirmed with details of any special requirements such as hinged or locked access etc.

Aesthetically, a wide range of panel materials, laminate finishes, panel and flash gap combinations are available and particular suitability can be discussed with our technical team.

Exploded View

Vanity Systems





Advances in materials and choice of sanitary ware means that the options for vanities have never been greater. With Petal's advice and guidance you can choose carefully to ensure that both the aesthetic appeal and the functionality of your washroom will be achieved.

Vanity System Options



High Pressure Laminate (HPL) is the entry level material for vanities. Suited only for surface mounted washbasins it can be produced with post formed down-stands and up-stands for a practical and serviceable solution.

Compact Grade Laminate (CGL) is a tough and totally waterproof alternative to HPL. Suitable for areas of hard use or vandal exposed washrooms.

Solid Surfacing is a unique hard-wearing material which can be produced in many different formats including integral basins and troughs all with seamless joints. Ideal for washrooms where style is an important factor, solid surfacing is available in many colours and finishes including stone effects.

The two main variables are design style and materials although both combine to produce many different variations.

Choose a material based on the project budget, the material's aesthetic appeal and its suitability for the application.



Natural Granite

This is an exceptionally hard-wearing vanity top and is ideal for under basins or freestanding top mounted basins. Available in a range of shades, Granite has a luxurious polished surface and can be produced in a range of styles including matching down-stands and up-stands.

Glass

In toughened or laminated formats, glass can be used as a vanity surface with or without up-stands for a variety of basin formats. Laminated glass is hard-wearing and can create highly contemporary styling when matched with the latest in tap and basin design.

Alternative Materials

More specialised materials can also be sourced and processed for use in the most luxurious or unique washroom environments. These include natural woods and alternative natural stones such as marble or limestone. Alternative composite stone products are available in a range of designer colourways. In each case, once given the context of the use parameters, Petal will advise on the suitability of a particular material.

As a bespoke washroom provider Petal can produce vanities to our client's own designs from any of the wide range of materials available. For many projects however, our range of Petal Vanity designs will meet and exceed our client's requirements. Vanities may be ordered in conjunction and co-ordinated with the complete washroom.

Vanity Design



Petal washroom solutions include cubicles, ducting and pelmets. In applications such as nursery or schools the vanities are sized appropriately. For sizing details see page 65.

Counter Top

Surface mounted basins can be set down on or partially recessed into any material including Laminates for practical and cost effective applications. Alternatively, freestanding surface mounted basins create a more bespoke look when combined with superior surface materials.



Semi Recessed

Inset surface mounted basins may be semi recessed exposing the front of the basin for an alternative style. Any of the material options may potentially be used in this format.



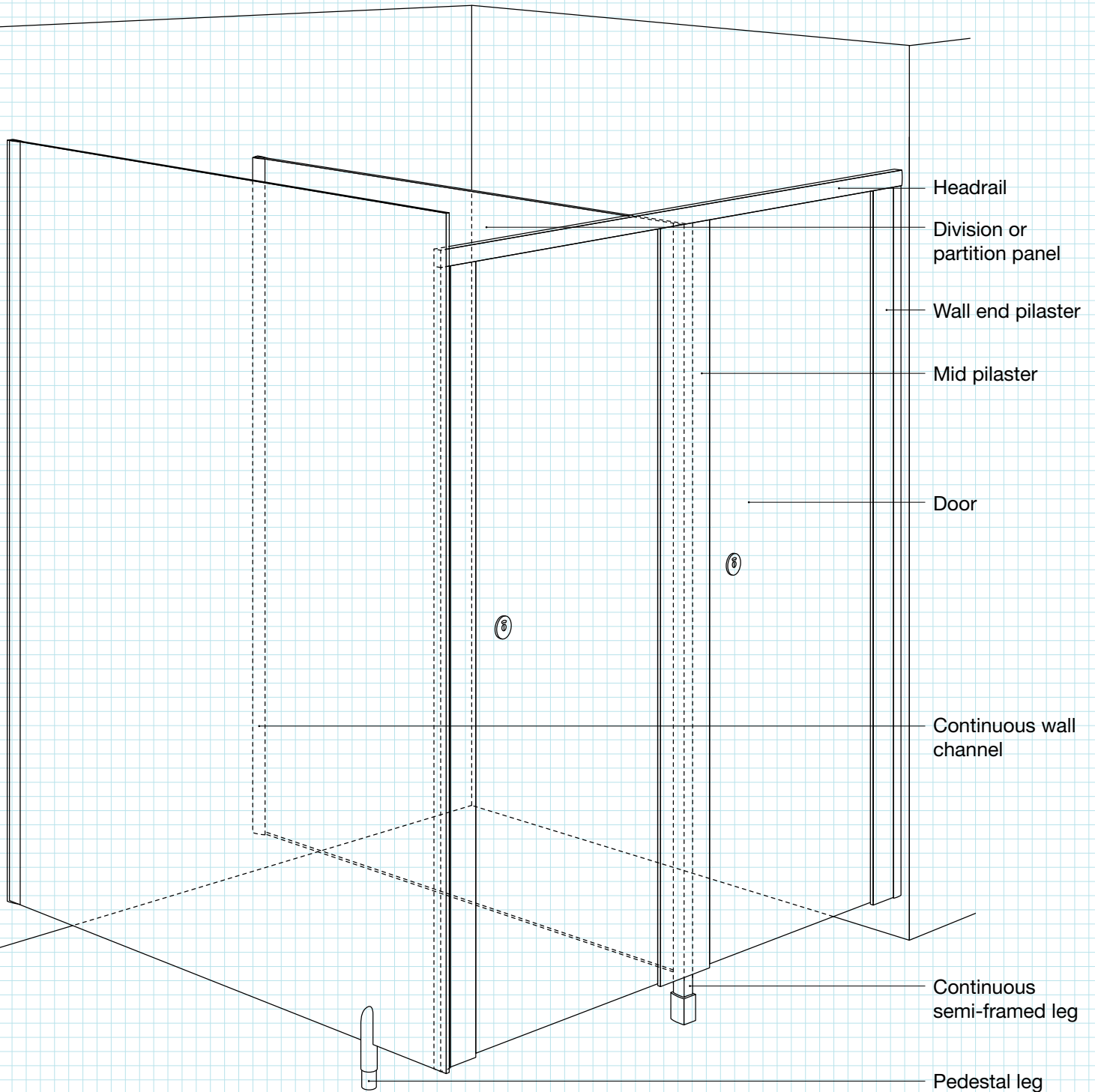
Under Counter

Basins may be fitted under counter creating a clean counter top finish. Often used in conjunction with granites and other materials. HPL vanity tops are not suitable for this application.



Technical

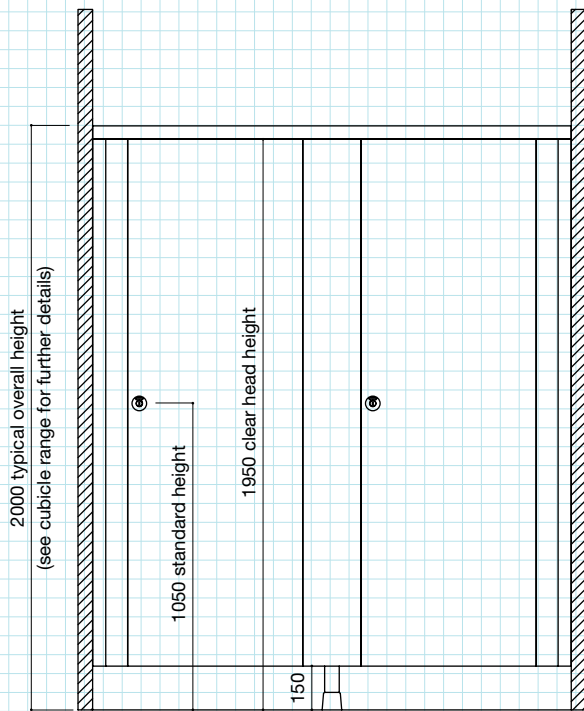
Cubicle Elements



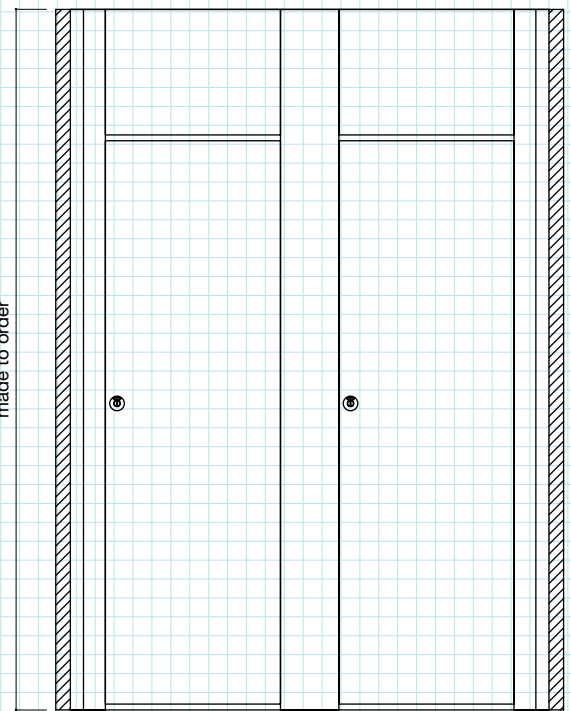
The Petal sales team and technical advisors are available to offer helpful advice at every stage of your project. To help you plan and discuss your project with us we have illustrated some typical cubicle layouts with details on components and sizing.

You can also download these drawings from our website www.petal.co.uk

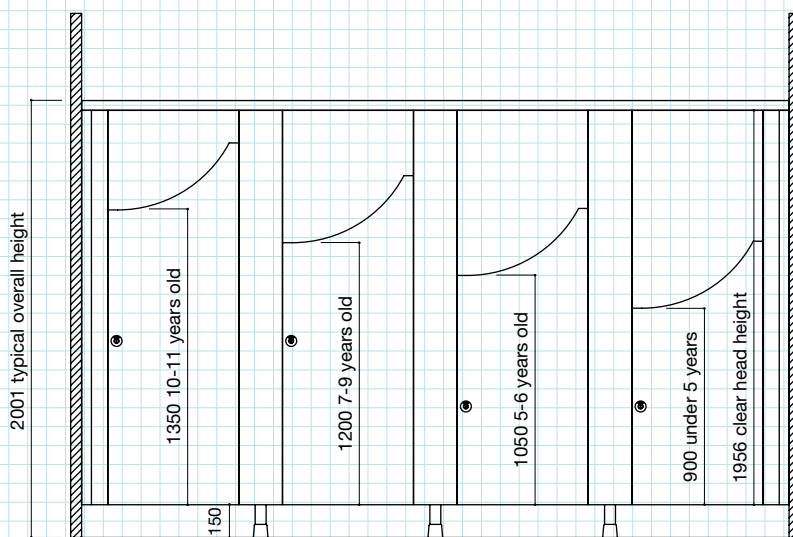
Cubicle Heights



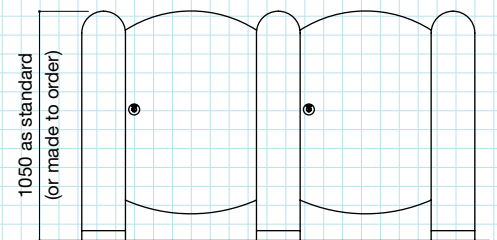
Standard



Floor to Ceiling



Education - Door Height Guidelines

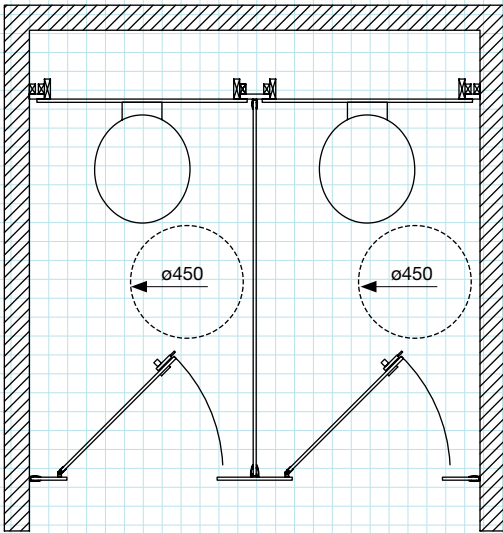


Nursery

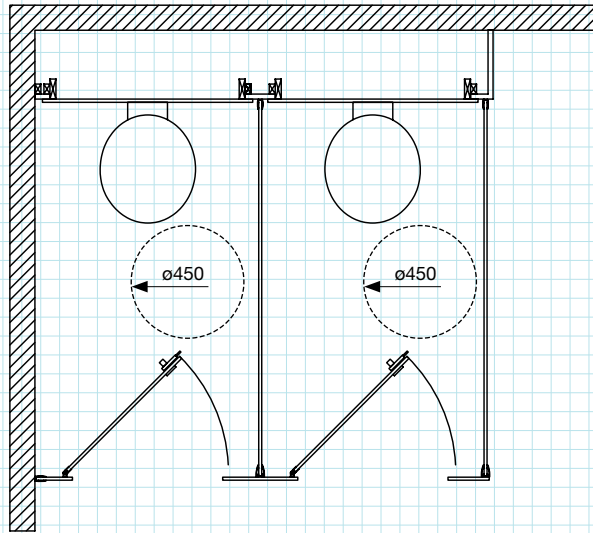
The cubicle layout in your project will be dictated by the available space and the conditions required for Disability Discrimination Act (DDA) compliance. Please discuss these options with our team of advisors who will offer practical advice to help you design the optimal washroom layout.

You can also download these drawings from our website www.petal.co.uk

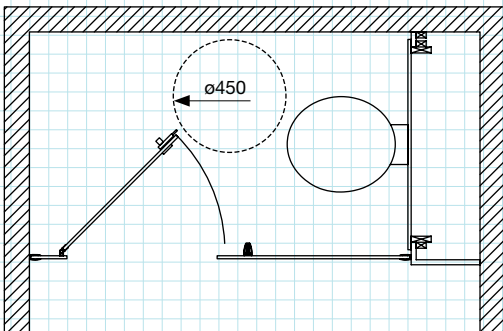
Cubicle Layouts



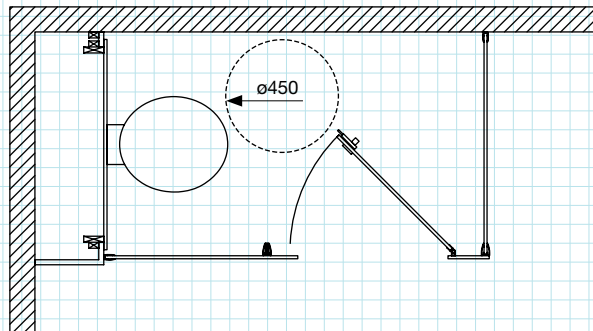
Between walls



Against walls



Panel and door inline between walls

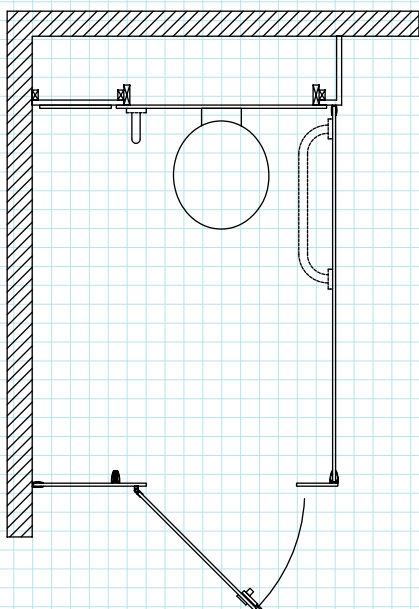


Panel and door inline against walls

Compliance with the DDA is an important factor in any washroom design. The following guidelines are provided to highlight the basic requirements of the legislation which should be addressed by your design professionals engaged on each project. Designers should also refer to DDA requirements for 30 point LRV difference in materials selected for use in cubicle systems.

In each case, a properly specified Petal cubicle system will comply with the DDA requirements.

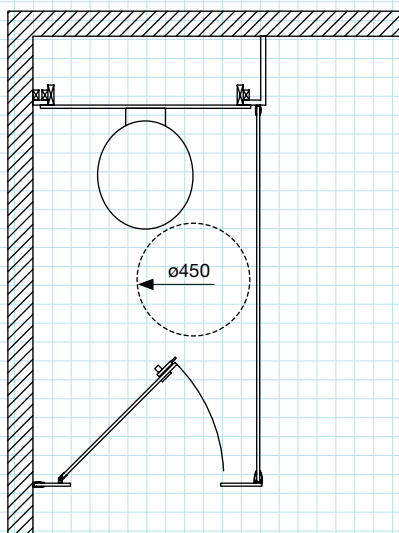
DDA



Enlarged

Washrooms containing four or more cubicles must contain at least one enlarged cubicle.

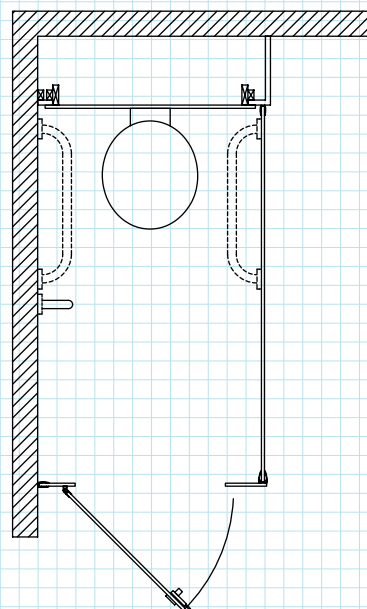
Enlarged cubicles must be a minimum of 1200mm wide and must have an outward opening door. Internal details must include both vertical and horizontal grab rails.



Standard

Each standard cubicle must accommodate a 450mm diameter manoeuvring space between the arc of the inward opening door, WC pan and the internal side wall or division panel.

Petal recommends a minimum cubicle depth of 1500mm to facilitate this minimum manoeuvring space requirement. The use of outward opening doors may enable compliance in projects where cubicle depth is restricted.



Ambulant

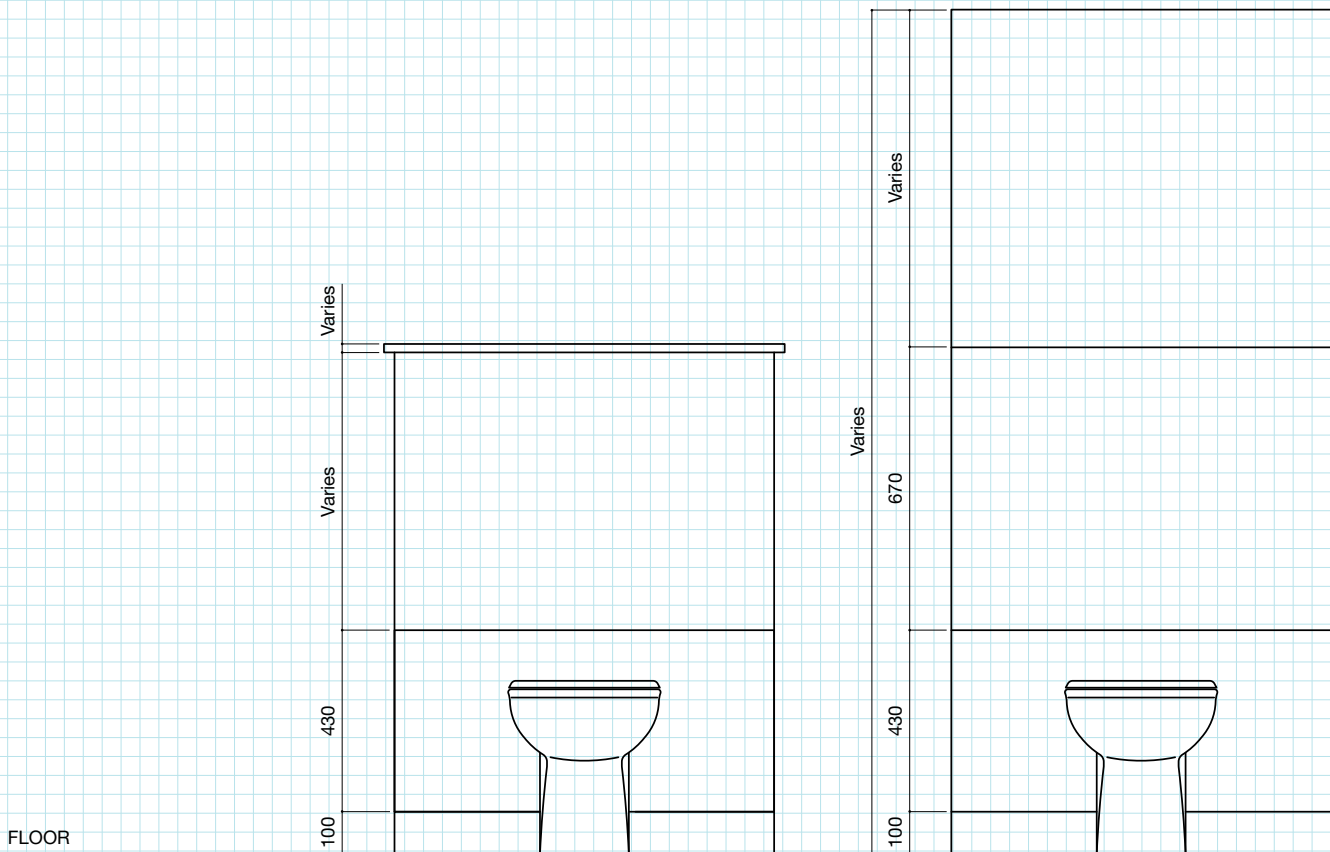
In each same sex washroom there must be at least one cubicle to meet ambulant disabled needs. In the case of only a single cubicle in the washroom then it must be ambulant. The ambulant cubicle must include an outward opening door and be equipped with the DDA required internal grab rails.

A wide range of material and performance options are available and we are able to advise which combination will be best suited to your project. The Petal technical team will provide detailed drawings of each panel system project ensuring trouble-free installation on-site.

You can also download these drawings from our website www.petal.co.uk

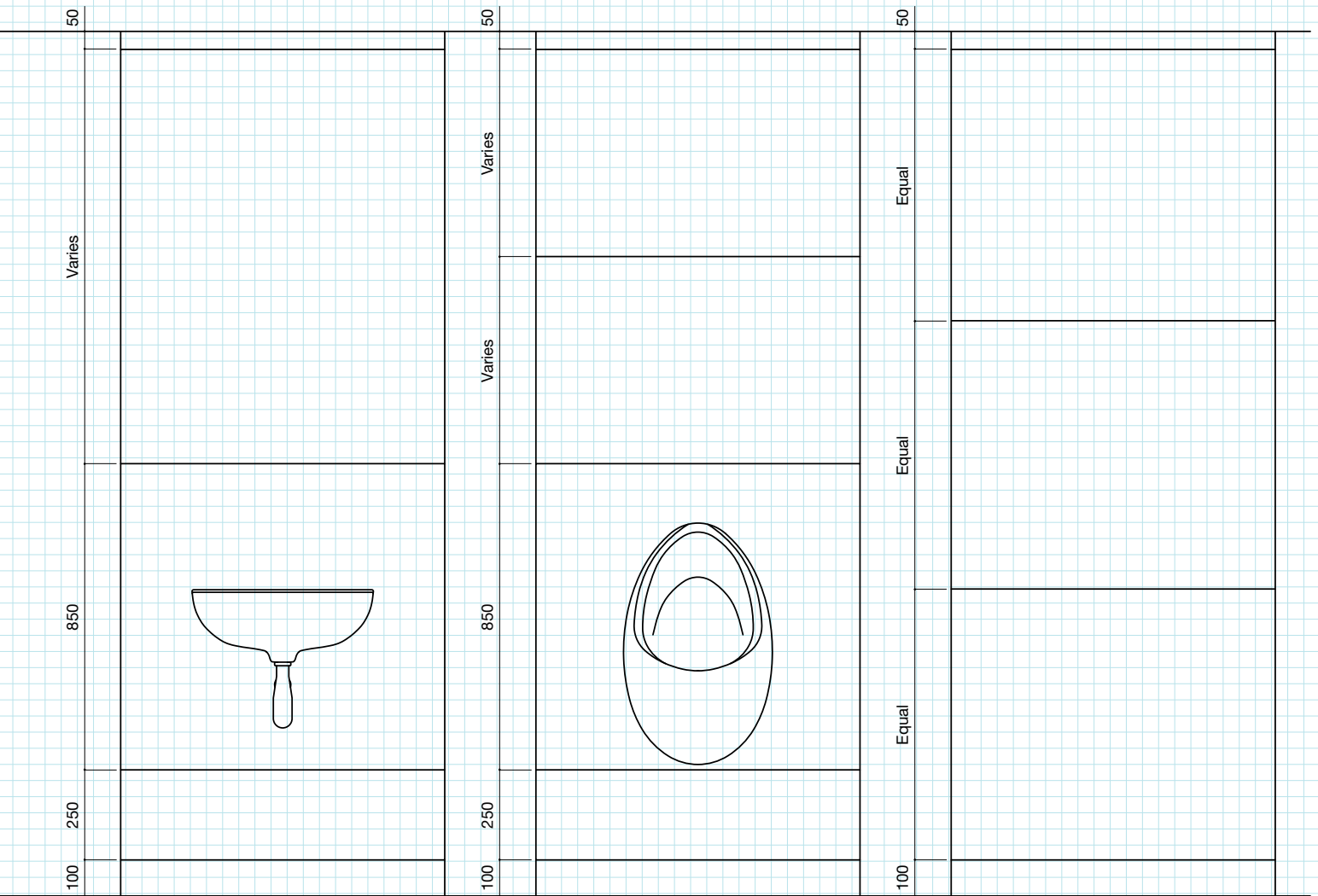
Duct and Access Panel Systems

CEILING



**Half Height Duct & Access
2 No. Panels**

**Cubicle Height
3 No. Panels**



**Floor to Ceiling
3 No. Panels**

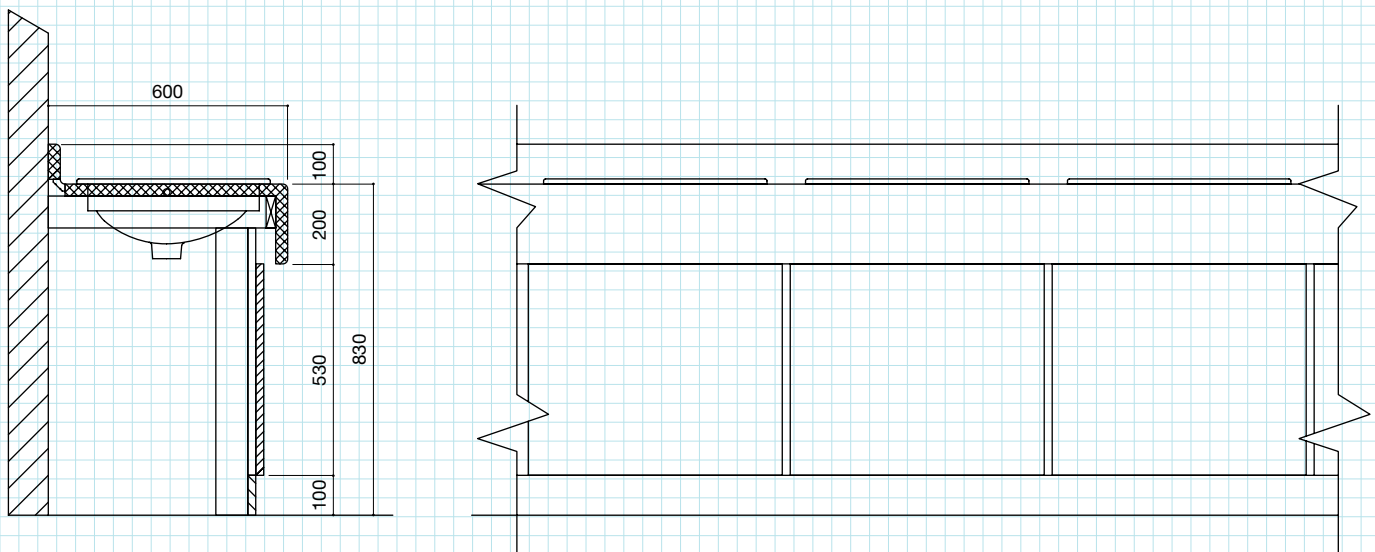
**Floor to Ceiling
4 No. Panels**

**Floor to Ceiling
3 No. Equal Panels**

Petal has developed a robust technical solution to accommodate the diverse range of vanities which can be specified in each washroom. Our technical team will provide a bespoke solution which ensures appropriate fixing details are provided in each washroom design.

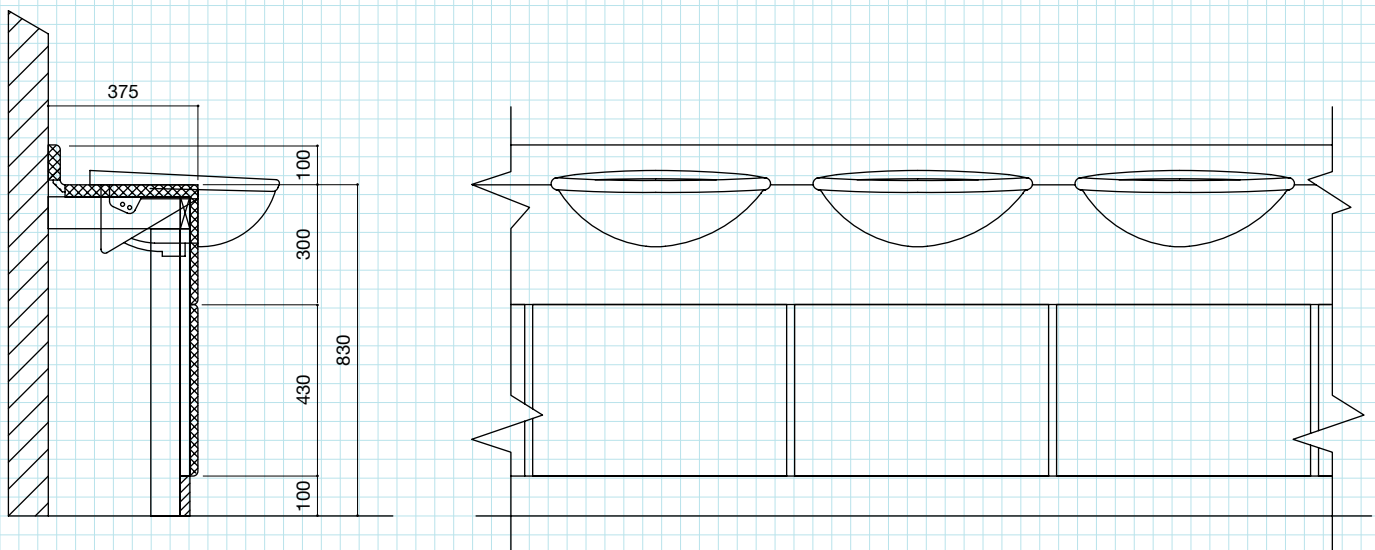
Please refer to our sales team to discuss your exact requirements.

Vanity Systems



Postformed Vanity to Suit Inset WHB

Standard height - 830mm FFL
Education option - 720mm FFL
Nursery option - 600mm FFL

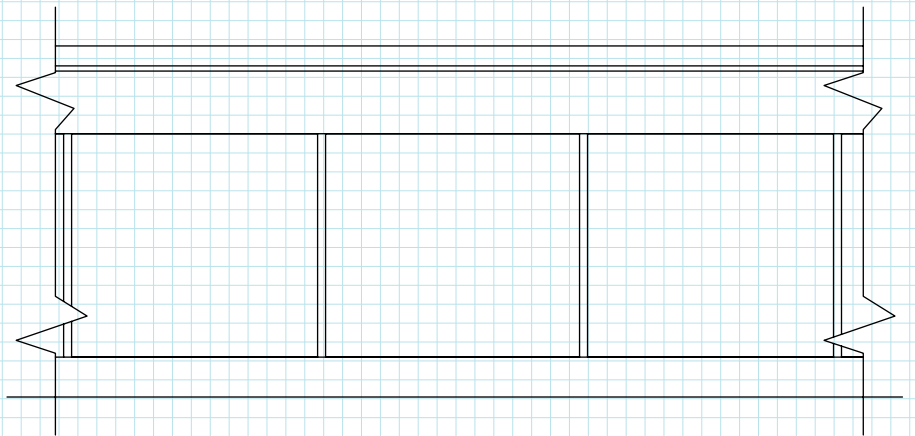
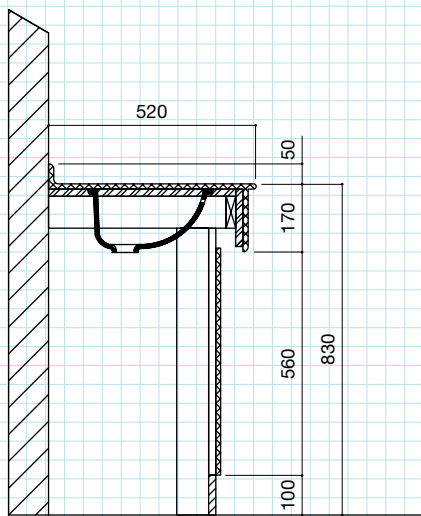


Postformed Vanity to Suit Semi-recessed WHB

Standard height - 830mm FFL
Education option - 720mm FFL
Nursery option - 600mm FFL

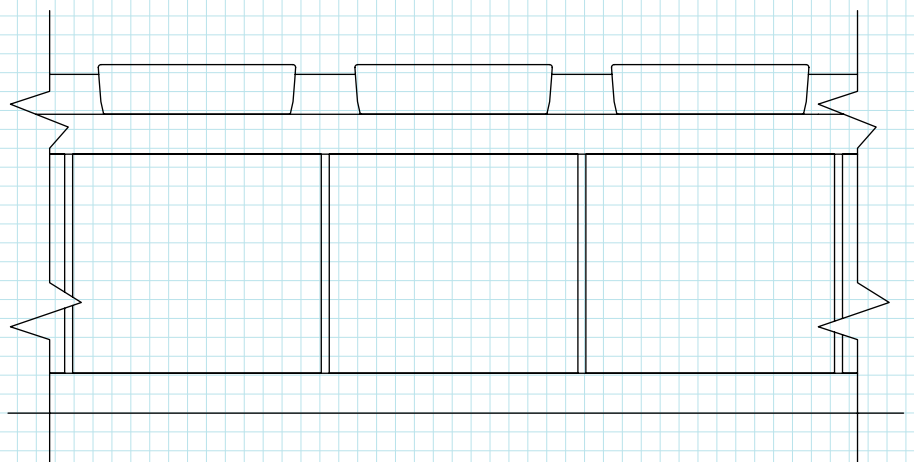
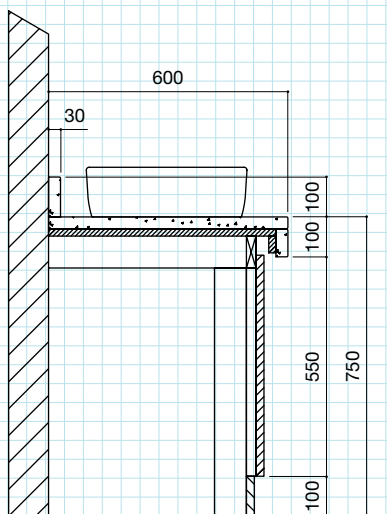
Bespoke Vanities

In addition to the standard vanity layouts shown below we can accommodate bespoke designs including troughs, wallhung glass etc.



Solid Surfacing Vanity to Suit Inset & Under Mounted WHBs

Standard height - 830mm FFL



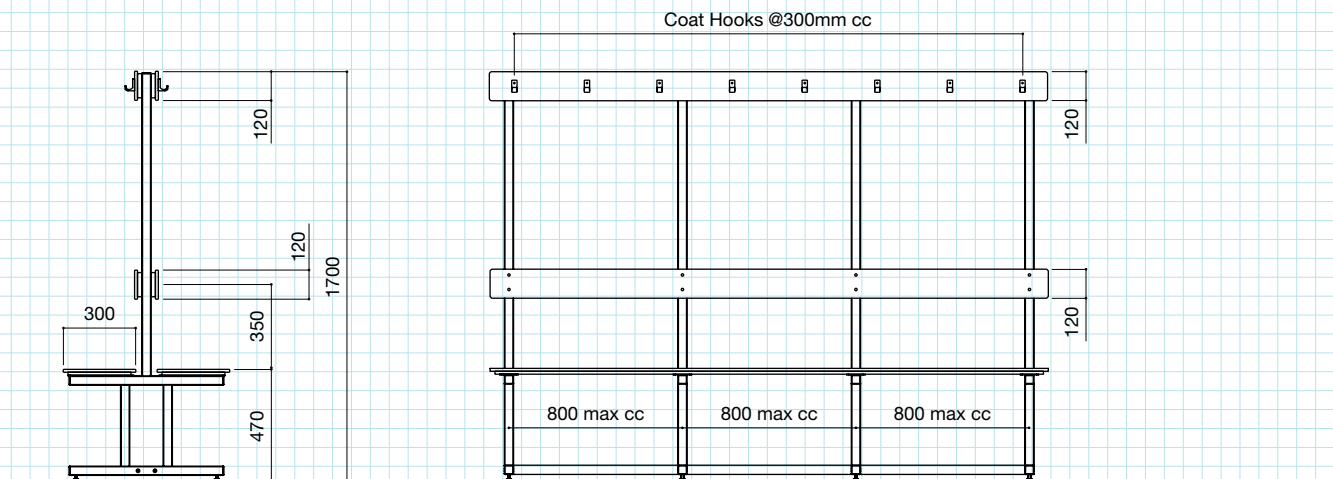
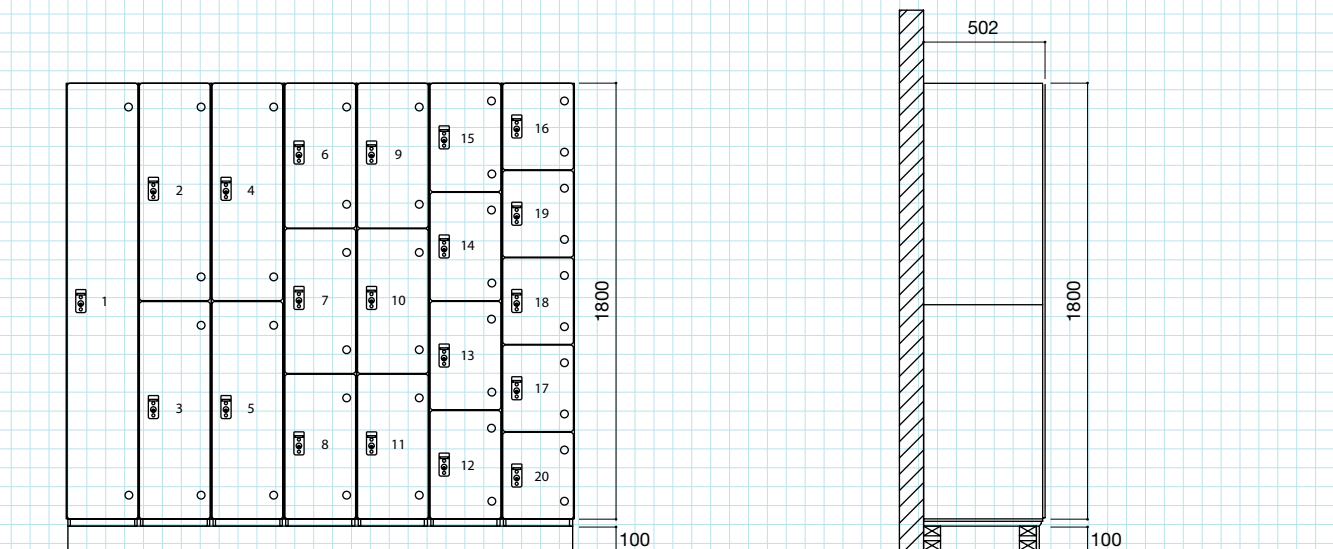
Granite Vanity to Suit Inset & Under Mounted WHBs

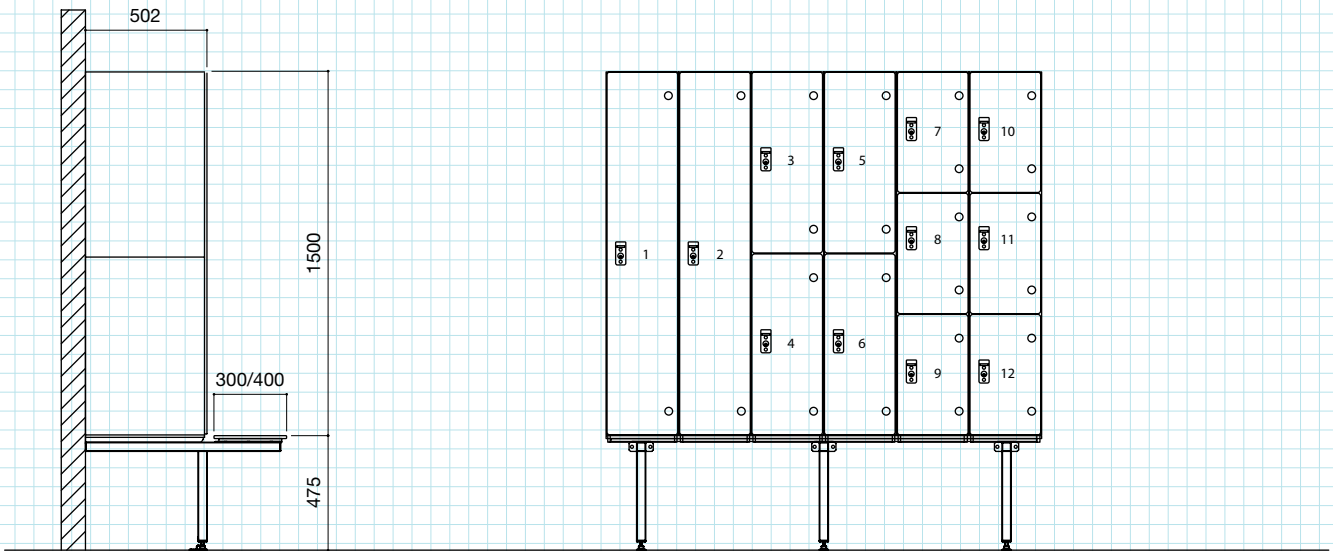
Standard height - 830mm FFL

Action lockers and benches are suitable for use in wet or dry areas. Our lockers feature aluminium bodies and door frames which can be combined with either laminate or glass doors and panels.

Please contact us for full details of the many locker and bench layouts which are available to suit each washroom and changing room application.

Lockers & Benches





Accreditations

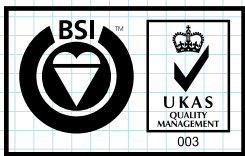
Quality
ISO 9001:2008

Health & Safety
BS OHSAS
18001:2007

Environmental
ISO 14001:2004

Industry
Contractors Health
and Safety Assessment
Scheme (CHAS)

**UK Register of
Pre-qualified
Construction
Services**



FM 12016



OHS 542070



EMS 554802



Sales and Support

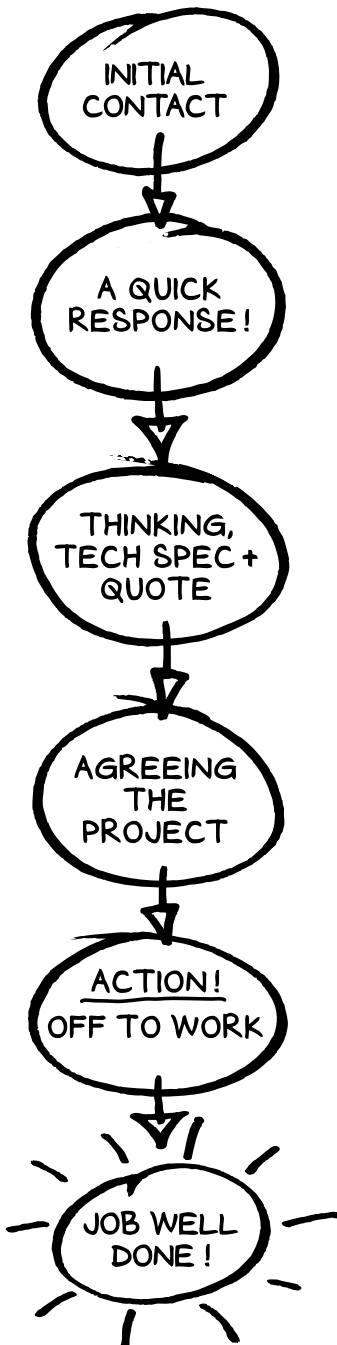
Whether you are choosing product, specifying performance, installing the washroom or are responsible for all of these, we are here to help.



To speak to a member of our sales team call 00800 1981 1981 or email support@petal.co.uk

www.petal.co.uk

A quick & efficient approach from concept to completion



Contact us by phone or email to send us details of your project or arrange a personal visit from one of our customer service team.

We will quickly respond to your enquiry and if necessary, visit you to discuss your requirements and make recommendations from our comprehensive range of washroom systems.

Our internal technical and estimating team will create an estimate and specification for your project including clear lead times based on your material selections.

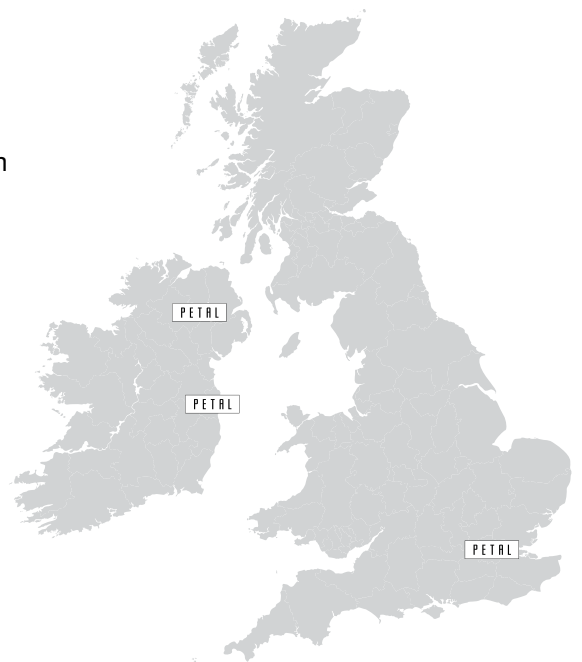
If necessary we will return to discuss our proposals in detail and take note of any additions or revisions that you wish to make to ensure you can achieve your objectives on both performance and project budget.

On agreement of the quotations we will instruct you on delivery and schedule either installation with Petal's expert team or delivery to your chosen contractor.

Where Petal is chosen to supply and install, we will closely manage the project through to completion and sign off.

Nationwide Coverage

Petal has an approved network of fabricators throughout the UK and Ireland to ensure geographical continuity and capacity, with companies specialising in all market sectors. Petal offers a nationwide supply and installation service.





Cubicle + Washroom Systems

Uniclass L2226
CI /SfB
(22.3) X

September 2011

Head Office

Petal Postforming Limited
Dromore Road
Irvinestown
Co. Fermanagh
N. Ireland BT94 1ET
Tel +44 (0) 28 6862 1766
Fax +44 (0) 28 6862 1004
Email sales@petal.co.uk

Dublin Office

Petal Postforming Limited
Unit 62 Western Parkway Business Park
Ballymount Road Lower
Dublin 12
Ireland
Tel +353(1) 4600 877
Fax +353(1) 4600 881
Email sales@petal.co.uk

London Office

Petal Postforming Limited
Gibbs House Kennel Ride
Ascot
Berkshire
England SL5 7NT
Tel +44 (0) 1344 893 990
Fax +44 (0) 1344 893 930
Email sales@petal.co.uk