

# FAIRVIEW

DEFINING ARCHITECTURE SINCE 1963



## COLOUR CHART

SPARKLING & CHROMATIC FINISHES

# FAIRVIEW COLOUR INSPIRATION PRODUCT RANGE

Fairview is proud to provide a stunning collection of colours, inspired by items that have meaning, value and appeal.

The colour chart applies to:

- Vitracore G2
- Vitrabond
- Vitradual

## FAIRVIEW PREFINISHED FAÇADE SOLUTIONS

Fairview specialises in the design, manufacture and distribution of a suite of quality façade solutions throughout Australia, North America and the United Kingdom.

With almost 30 years' experience in the façade industry, Fairview is dedicated to consistently facilitating the successful delivery of innovative façades that meet the requirements and vision of each project.

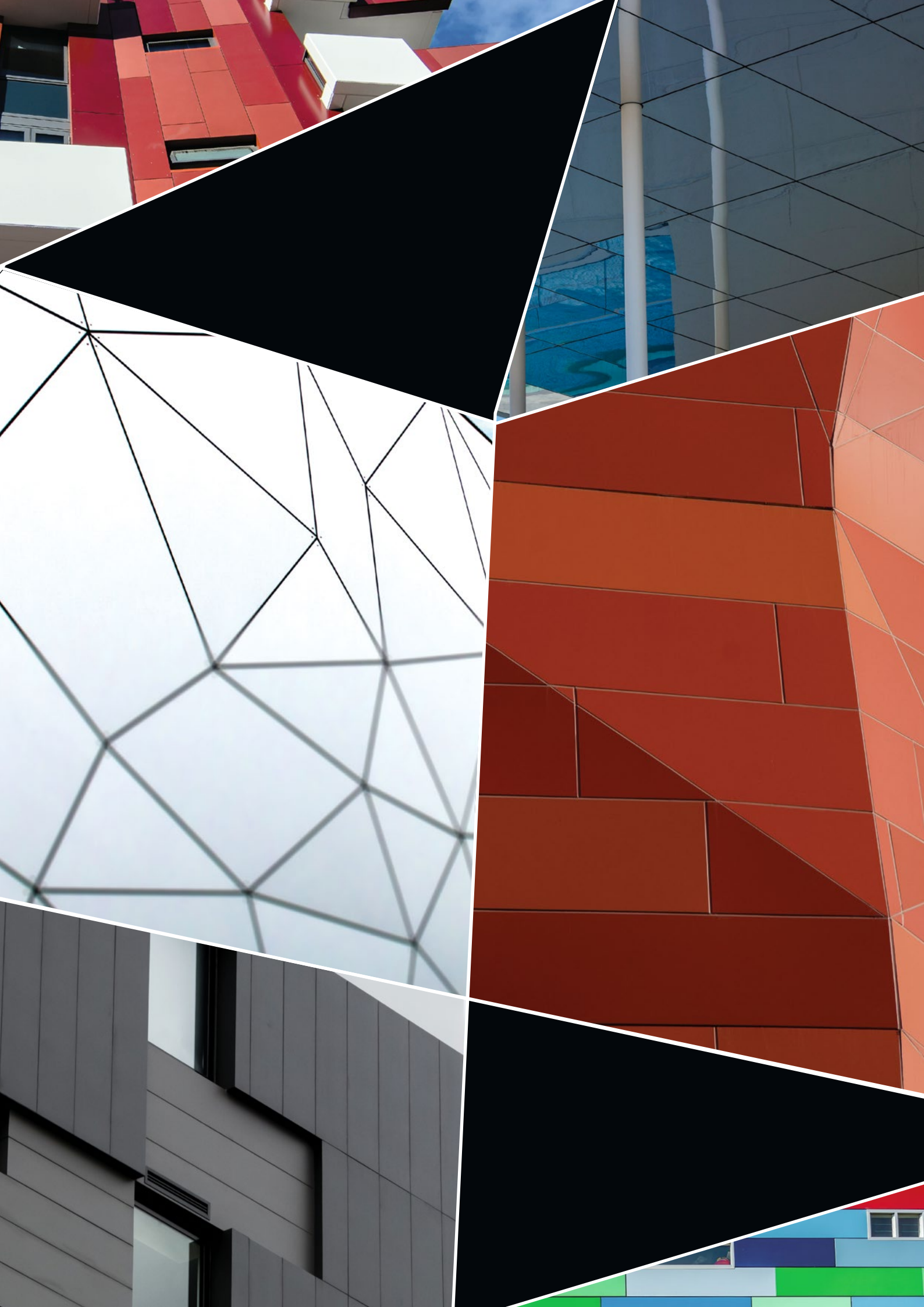
With one of the largest stock holds in Australia, we have the ability to ensure a consistent and timely supply to our dedicated installer network. In addition to this, our flexible and innovative approach allows us to work closely with our clients to deliver the best possible project outcomes.

Our suite of façade products and solutions includes:

- Vitrabond
- Vitracore G2
- Vitradual
- Ceramapanel
- Argeton
- VitraArt
- Equitone
- Trimo
- QBiss One
- Vitranamel





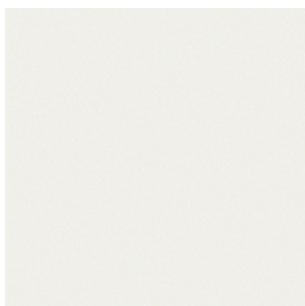




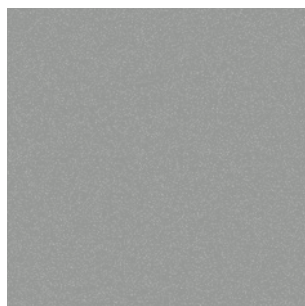
## SPARKLING INSPIRED BY THE GALAXY

A galaxy is an oasis in space; a culmination of stars, dust and gas held together by gravity. Each galaxy represents illumination; its beauty inspires and amazes.

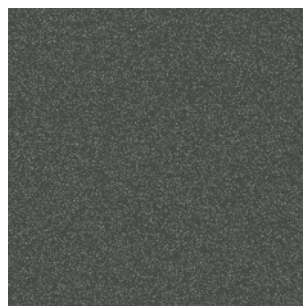
Through wonder and extravagance, sparkling colours help bring peace of mind and pleasure to the soul, and are often associated with illumination, charm, glamour, magic and wisdom.



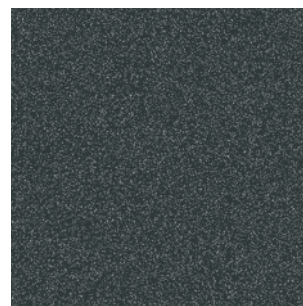
Sparkling White 7010 G △



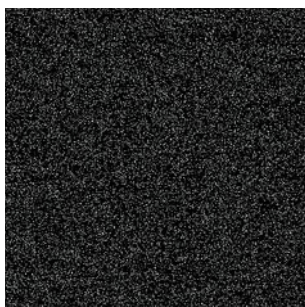
Sparkling Light Grey 4725 △



Sparkling Titanium 7260 △



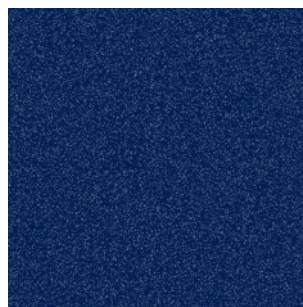
Sparkling Dark Grey 7250 ✓



Sparkling Black 7295 G ✓



Sparkling Green 7500 △



Sparkling Blue 7470 G △

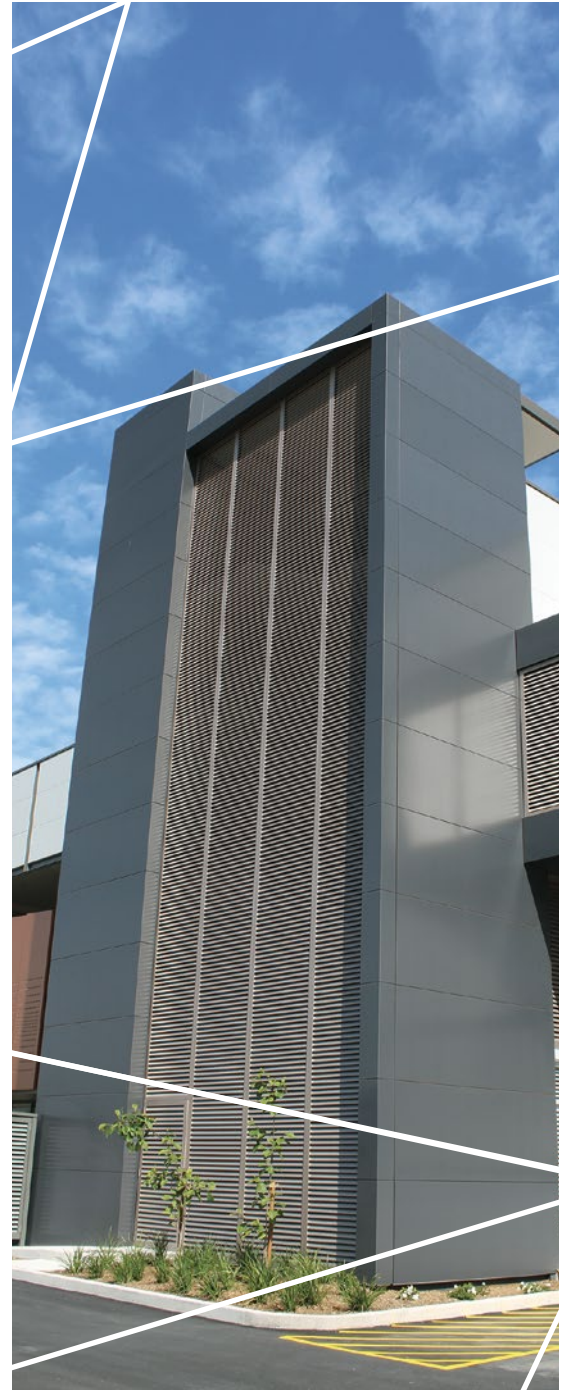


Sparkling Red 7650 G △

✓ No minimum order quantity required. △ Minimum order quantity required. G Gloss.

Disclaimer: Please note that size restrictions may apply to finishes listed with no MOQ's, and thus could still be affected by lead times.  
Colours shown are as accurate as possible, however due to the limitations of the printing process and lighting changes we recommend requesting a production sample.





## PETER WARREN AUTOMOTIVE SPARKLING DARK GREY 7250

**LOCATION:** Warwick Farm, NSW  
**ARCHITECT:** Hodges Shorten Architects  
**BUILDER:** Maggiotto Building  
**PRODUCT:** Vitrabond

The Peter Warren Automotive Group is a family-owned and operated company, founded by Peter Warren in 1958. Peter Warren commenced business operating a small used car yard next to Liverpool Railway Station. Today the company's land holding at Warwick Farm is nearly twenty two acres.

The refurbishment of the Warwick Farm based dealership utilised Vitrabond to reflect the company's brand, values and ideals.



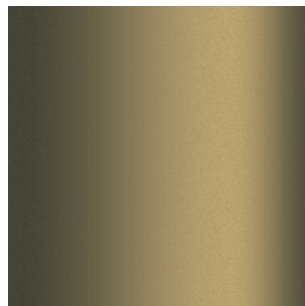
## CHROMATIC INSPIRED BY LUXURY

Luxury symbolises prestige, quality and status. Items such as luxury cars represent quality equipment, better performance, precise construction, breathtaking speed and superior comfort.

The Chromatic range provides the appeal, depth and richness of quality finishes required of only the most stunning architectural projects.



Chromatic Ice  
Gold 7090 G



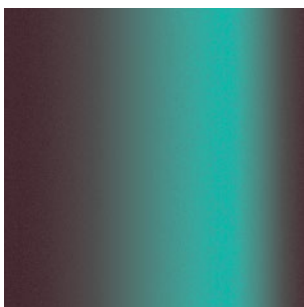
Chromatic Antique  
Gold 7160 G



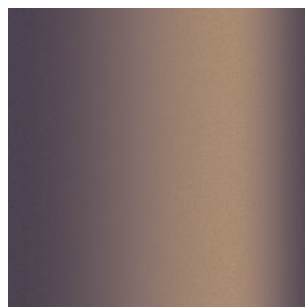
Chromatic Rustic  
Bronze 7350 G



Chromatic Galaxy  
Silver 7290 G



Chromatic Diamond  
Purple 7450 G



Chromatic Sunset  
Purple 7430 G



Chromatic  
Fluorescent Violet 7480 G



Chromatic Avatar  
Green 7510 G



Chromatic Jungle  
Green 7550 G



Chromatic Ocean  
Blue 7490 G



Chromatic  
Lighthouse Blue 7440 G



Chromatic Honey  
Gold 7170 G

Disclaimer: Please note that size restrictions may apply to finishes listed with no MOQ's, and thus could still be affected by lead times.  
Colours shown are as accurate as possible, however due to the limitations of the printing process and lighting changes we recommend requesting a production sample.





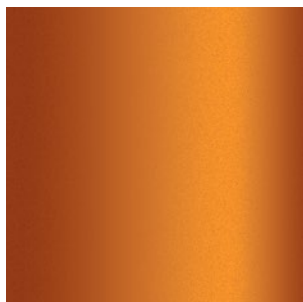
## NORTHERN CANCER SUPPORT CENTRE CHROMATIC TIGER 7180

**LOCATION:** Launceston, TAS  
**ARCHITECT:** ARTAS Architects  
**BUILDER:** Premium Constructions  
**PRODUCT:** Vitrabond

The design of the \$4.3 million Northern Cancer Patient Support Centre, fosters the image and delivery of service with a strong focus on the human elements. The design seeks a non-institutionalised environment, fostering healing according to the concept of holistic treatment of the individual with treatment of the mind, body and soul.



Chromatic Aztec Gold 7150 **G** **△**



Chromatic Tiger Orange 7180 **G** **✓**



Chromatic Sahara Copper 7190 **G** **△**



Chromatic Ancient Red 7690 **G** **△**

**✓** No minimum order quantity required. **△** Minimum order quantity required. **G** Gloss.



# FAIRVIEW

DEFINING ARCHITECTURE SINCE 1963

## AUSTRALASIA

P / +61 2 6352 2355

helpdesk@fv.com.au

## NORTH AMERICA

P / +1 860 242 2711

helpdesk.na@fv.com.au

## UNITED KINGDOM

P / +0844 800 7131

helpdesk.uk@fv.com.au

[WWW.FV.COM.AU](http://WWW.FV.COM.AU)