

One of the fleet of vehicles Spratt Transport Services uses to handle and distribute shipments



# Exciting times for Spratt Transport Services



Since opening its new warehousing facility early last year, Spratt Transport Services has gone from strength to strength, copper-fastening its reputation as one of Ireland's premier freight forwarding providers.

**S**pratt Transport Services was established in the early 1990s to provide a transport service, predominantly to the freight industry. Now with nearly a quarter of a

century's experience in the freight industry, the Santry-based company is able to add greatly to a freight forwarder's operation. Since its inception, Spratt Transport Services

(STS) has delivered a professional and dedicated service to companies: collecting and delivering parcels, pallets, groupage loads, full loads and just about every type of cargo.



With comprehensive, expert knowledge of the forwarding industry, Spratt guarantees that all shipments are expertly handled, in an efficient and cost-effective manner. When it comes to paperwork, all staff members are fully aware of procedures with AWBs, bills of lading, releases, customs etc. This ensures a fast and simple service to customers waiting for deliveries and also means that freight companies' staff don't have to waste precious time trying to fix simple things.

In February 2009, STS opened a new bonded warehouse facility in Santry, Dublin 9. This spacious facility is ideally located for the freight industry as it is only minutes from Dublin Airport, the Port Tunnel, the M50 and the M1. The warehouse - contained in its own secure, fenced compound complete with 24 hour CCTV and alarm

system - enables Spratt Transport Services to provide a fully-bonded warehousing and distribution / road haulage / transport and handling service in Ireland.

Spratt is able to receive any bonded containers from outside the EEC and de-van / unload and palletise any loads to client specifications. The warehouse comes equipped with dock-levelling facilities and has at present up to 1,000 pallet spaces (with an option of more if required). The warehouse is laid out to suit storage and pick 'n' pack, with the racking easily adjustable to suit the particular pallets coming through.

As a result of companies downsizing and outsourcing their warehouse needs, Spratt Transport Services offers a full logistics system to customers, comprising a complete handling option to all - from collection to holding stock, picking orders, preparing goods for distribution and eventually putting the order / shipments out for delivery. With a complete supply chain in place through one facility, STS makes life

easy for its partners, taking care of all their transport / logistics needs.

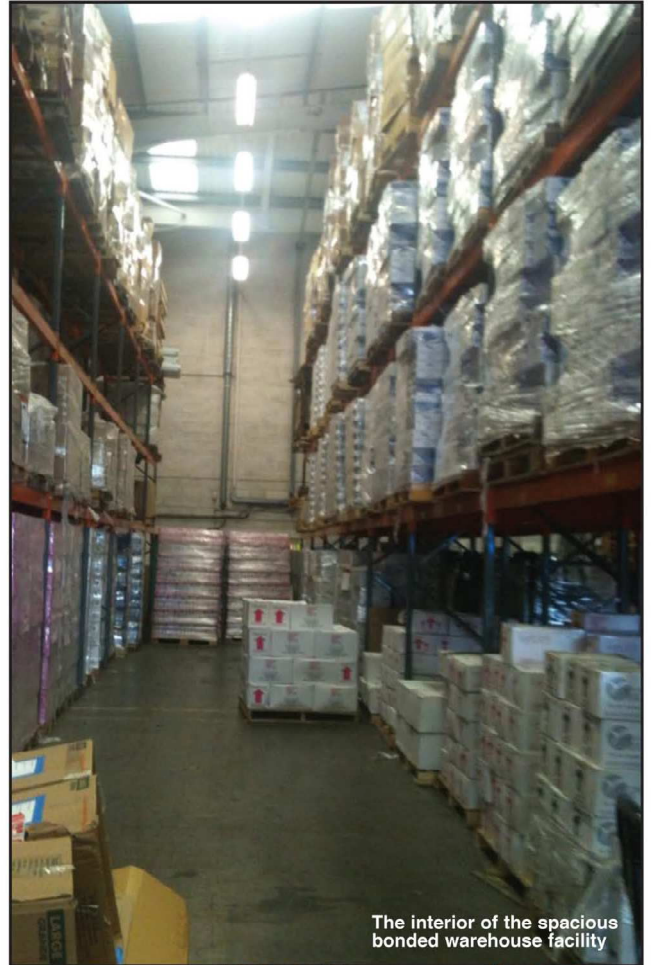
Using its dedicated fleet of vehicles, Spratt Transport Services can handle and distribute all shipments. A range of transits, box vans and curtainsiders (20ft, 22ft, 24ft, 26ft and 28ft) with tail lifts is available, while 40ft loads are also catered for. STS covers Dublin and surrounding counties on a daily basis and provides a next-day service to the rest of Ireland. They can handle hazardous cargo, abnormal loads and small fridge deliveries, also offering a shunting service ex. Dublin Port for 20ft and 40ft containers.

All drivers are fully-trained and highly-experienced. They do multidrops on a daily basis and are familiar with all industrial estates and business areas. They are also airFreight security trained for carrying airfreight exports or "known cargo".

The team at Spratt Transport Services is continually striving to provide a better and more reliable service. They are always available to answer queries and are interested in talking to prospective partners with a view to handling their requirements in the warehousing and distribution sector.

Paddy Spratt Snr. established the business over two decades ago. He comes from a freight background and opted to set up his own company after being made redundant, forming his own business to specialise in deliveries in and out of Dublin Airport. From those early days, the company has expanded significantly, forging an unrivalled reputation as a freight forward partner to some of Ireland's biggest companies.

Transport is provided all over Ireland, the UK and Europe, with the recently-opened 12,000-ft customs-bonded warehousing adding substantially to



The interior of the spacious bonded warehouse facility



The company provides bonded warehousing & distribution, road haulage and transport & handling service in Ireland



the Spratt Transport Services appeal. Paddy is delighted to report that business is going extremely well at present:

"Things have picked up significantly," he notes. "We moved into the bonded warehouse in February last year and it took a little bit of time to get things up and running, but it has really taken off and we're so busy that we're currently thinking about moving to new premises."

One of the great strengths of Spratt Transport Services is its exceptional location in the heart of Dublin's transport network, close to all the main arteries: "50% of our customers are within a one-mile radius," the founder / MD reveals. "We're in a prime location on the edge of both the M1 and M50, close to the Airport and the Port Tunnel. From this base, we can provide a fast and efficient service to national and international clients."

Paddy also oversees a flexible, hard-working, state-of-the-art fleet. Six curtainsiders cover Dublin and Leinster, as well as designated runs outside, while subcontractors are also enlisted on a daily basis and STS also has agents in every county – as well as a network throughout Europe. Ten people are employed

directly as well as subcontractors, which could include up to fifteen different hauliers on a given day, each using up to five or six trucks.

Spratt Transport Services is a family business, with two of Paddy Snr's sons involved as well as one of his nieces. Regarding the future, he concludes: "We are expanding. To be honest, with the economic downturn and the way the transport sector was going, we were half dreading what the future held. But since we opened the new warehousing facility things have really turned around. Now, we're in a situation where we might have to move into a larger space again. So, things have picked up and we've taken on a lot of new customers.

"We have a young and vibrant staff and we will continue to provide an exceptional level of service."

Spratt Transport Services  
Unit C1,  
Furry Park Industrial  
Estate,  
Santry,  
Dublin 9,  
Ireland.  
Telephone: 01 8527100  
Fax: 01 8527102  
email:  
sales@sprattrans.com  
www.sprattrans.com



Warehouse has dock-levelling facilities and up to 1,000 pallet spaces



The bonded warehouse is ideally located