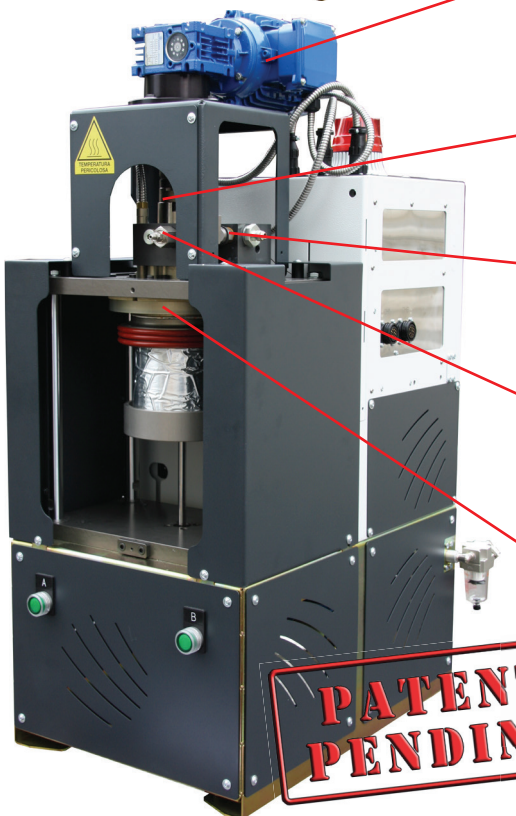
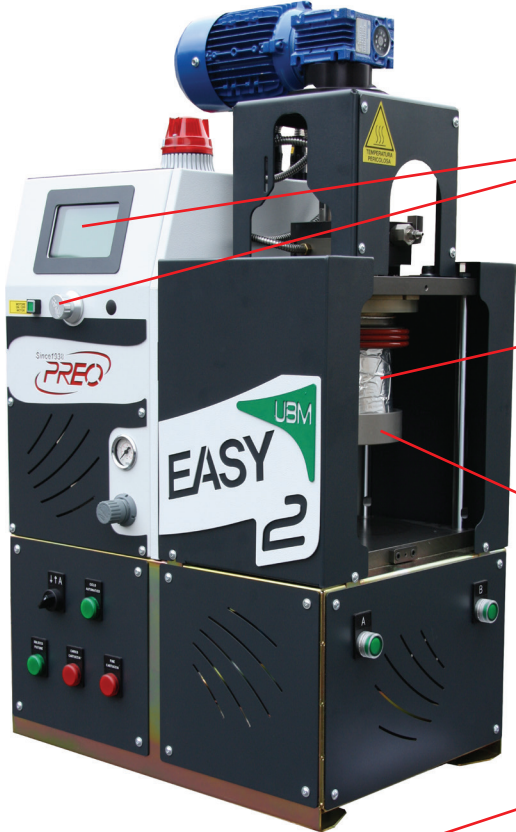




**UBM Easy Series: The first and only ZERO MAINTENANCE applicators in the world for Polyurethane Reactive (PUR) adhesives in cartridges.**

The UBM Easy Series of applicators with “melt on demand” technology provides the ideal solution for melting and applying small quantities of PUR adhesives in a variety of sectors such as paper-transformation, bookbinding, textiles, and assembly. These highly innovative applicators are easy to use and flexible enough to adapt to different production needs, with low impact maintenance operations and costs. The applicators are quickly installed and easily programmed, with suitable security standards. Exceptional reliability and complete integration into any existing automatic line guarantee great application versatility that helps increase productivity and reduce the amount of wasted adhesive. The new microprocessor manages all system operations from thermoregulation of the various sections to programming glue lines. Other specifications are: Economy function, Clock, Weekly Program, Automatic ON-OFF function, Over-Temperature Alarm, Delayed Cut-out for Temperature Set Point, and Heating Cycle Management.



**PATENT PENDING**

**LCD DISPLAY AND INNOVATIVE PROGRAMMING**

This feature provides images of all sections of the machine (tank, pipes, and guns) and the relevant parameters, making it extremely simple to programme the system even for non-specialist personnel. There are no problems involving codes or foreign languages to interpret. A notification area constantly and dynamically monitors the machine’s status. Specific messages are displayed for alarms, errors and malfunctions. A rotary switch is used to set all system parameters very easily.



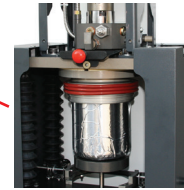
**PUR CARTRIDGES**

The system uses mono-component PUR adhesive cartridges with a diameter of 125-150 mm and maximum height 200 mm. The cartridge fits directly into the tank with its aluminium inliner and there is no need to add inert gas or dried air. This procedure prevents harmful vapours from being released during the cartridge change phase – a simple, quick and completely safe procedure, thanks to a special system.



**ZERO MAINTENANCE**

All parts of the applicator can be inspected easily because of a practical body design system that opens quickly to facilitate cleaning, especially around the pressure plate area. Thanks to this innovative construction method the entire plant requires almost no maintenance, with clear savings in terms of time and money.



**GEAR MOTOR**

The applicators are fitted with variable speed AC motors run by horizontally positioned inverters. This arrangement minimises overall dimensions and provides easy access both for inspection and maintenance, through a quick connector and an easy-to-open body system.



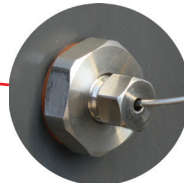
**HIGH PRECISION GEAR PUMP**

The system is fitted with very precise and reliable gear pumps made of fully tempered high speed steel (HSS) with different flow rates. Like the other internal parts of the applicator, the pump is easy to remove in case of maintenance or replacement.



**PRESSURE CONTROL GAUGE**

The applicator display shows the output pressure of adhesive at the manifold, monitored by a sophisticated control system. The display can be read like a traditional digital pressure gauge, indicating the pressure of the adhesive in bars.



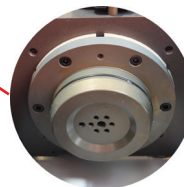
**BY-PASS VALVE FOR PRESSURE REGULATION AND RELEASE**

This valve maintains the pressure constant with machine settings and ensures the utmost safety during system operation by releasing the pressure of the adhesive inside the plant automatically and safely, even in the event of an emergency.



**“MELT ON DEMAND” TECHNOLOGY**

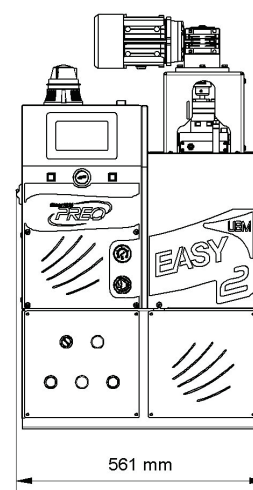
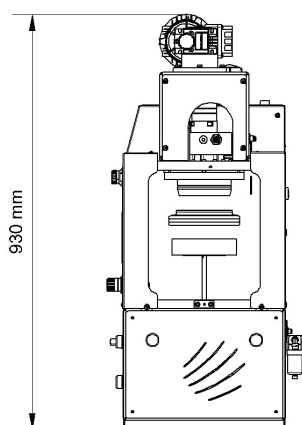
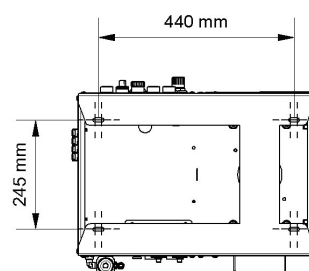
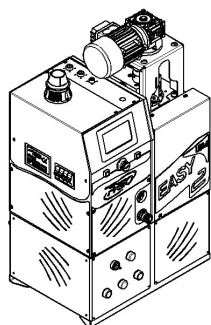
The melt on demand melting system only heats the quantity of adhesive required. A piston is activated that presses the cartridge onto the melting plate to feed the manifold. This system makes it possible to reduce thermal stress to a minimum, protecting the remaining adhesive that is perfectly preserved in its original packaging.



# EASY SERIE UBM



## TECHNICAL SPECIFICATIONS



## GENERAL SPECIFICATIONS

ADHESIVE TYPOLOGY AND VISCOSITY	foil encased slugs of hot-melt polyurethane reactive (PUR) up to 70,000 Cps
SLUG DIMENSIONS	∅ 125 mm, ∅ 150 mm, maximum height 200 mm
OPERATING TEMPERATURE	50°C±210°C (120°F±410°F) standard version
HOSE/GUN CONNECTIONS	2 (fitting thread 1/2"x20 UNF)
TANK CAPACITY	2 kg
MELTING RATE	5 kg/h (depending on used adhesive)
WEIGHT (EMPTY)	61 kg (133 lb)
MACHINE DIMENSIONS (L x H x W mm)	561 x 930 x 470 mm
PRESSURE PLATE	coated with PTFE scratch-resistant non-stick treatment and quick drain valve
MANIFOLD	coated with hard oxidation treatment
FASTENING	buttonhole for M8 screws

## ELECTRICAL SPECIFICATIONS

VOLTAGE	1/N/PE AC 230 V ±10% 50/60 Hz, 3/N/PE AC 400 V ±10% 50/60 Hz
POWER CONSUMPTION	1,5 kW (7 A) (without hoses and guns)

## MICROPROCESSOR SPECIFICATIONS

TEMPERATURE CONTROL	PT100 ±0,5°C (1°F) - RTD or Ni120 (on request)
MICROPROCESSOR TYPOLOGY	by graphic interface with LCD display 240x128 pixels LED back lighted and rotary switch programming selector
FUNCTIONS	Economy, Clock, Weekly Program, Maximum Temperature Alarm, Heat and Melting Cycle Management
SAFETY	by-pass safety valve, over-temperature automatic protection, emergency stop input alarm, glue pressure release
OPTIONS	quick pressure release valve and flow regulation, integrated glue pattern control

## GEAR PUMP SPECIFICATIONS

PUMP TYPE	gear single flow
PUMP MAXIMUM SPEED	2,0-4,0 cc/rev (80 rpm)
MAXIMUM PUMP RATE	9 kg/h (2,0 cc/rev pump) - 18 kg/h (4,0 cc/rev pump) (depending on used adhesive)
MOTOR SPECIFICATIONS	0,25 kW variable speed reduction gear 1:20 inverter-controlled
MAXIMUM WORKING PRESSURE	55 bar

© Copyright 2012 PREO SRL - All rights reserved - Subject to change without advanced notice - Printed in Italy - Edition EN-130 EASY UBM - 04/05/2012

### PREO S.r.l.

Via Alessandro Volta, 7 • 20094 Corsico (MI) • Italia  
tel. (+39) 02 48601260 • fax (+39) 02 4503323  
www.preo.it • italia@preo.it • world@preo.it



YOUR  
QUALITY  
CHOICE