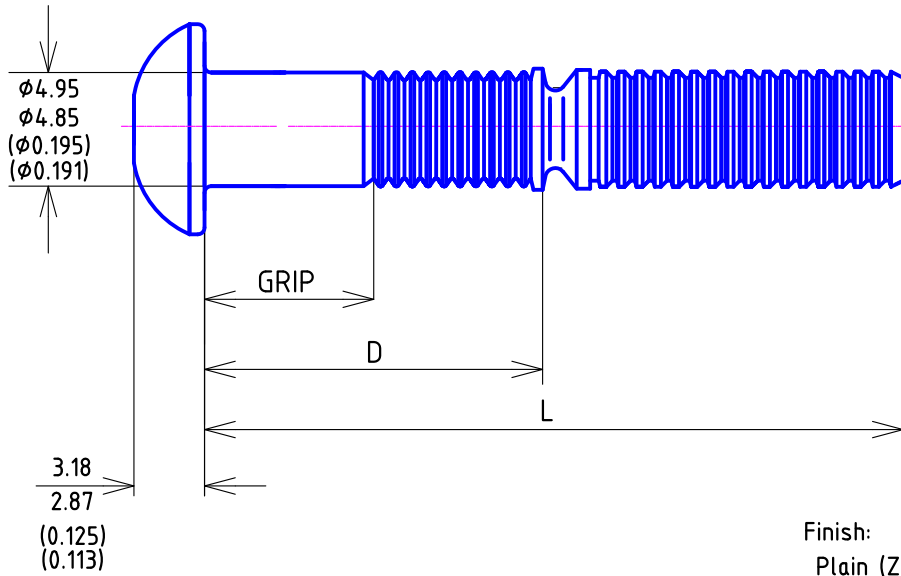
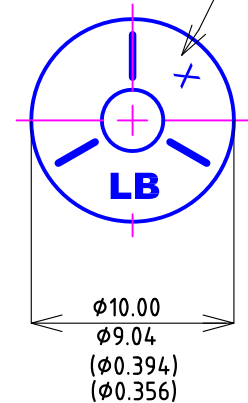


Unit:mm/ (inch)



Letter Showing:  
Min-Max Grip Range



Finish:  
Plain (Zinc Plated)

MECHANICAL PROPERTIES:

Min Ultimate Tensile: 7.5 (KN)  
Min Shear Strength: 8.6 (KN)  
Max Hole Diameter: 5.0 (mm)

APPROVED BY CUSTOMER For Manufacture	
Name: _____	Date: _____
Signature: _____	

Raw Material Specification: CARBON STEEL

3/16"	Part Number	Grip(mm)		Grip(inch)		D(mm)		D(inch)		L(mm)		L(inch)		Head Marking
		Min	Max	Min	Max	Min	Max	Min	Max	Min	Max	Min	Max	
6-2	ERSB06-02G	1.60	4.78	0.063	0.188	9.21	10.81	0.363	0.426	35.66	37.16	1.404	1.463	2
6-3	ERSB06-03G	3.18	6.35	0.125	0.250	10.81	12.41	0.426	0.489	37.24	38.74	1.466	1.525	3
6-4	ERSB06-04G	4.78	7.95	0.188	0.313	12.38	13.98	0.487	0.550	38.84	40.34	1.529	1.588	4
6-5	ERSB06-05G	6.35	9.53	0.250	0.375	13.98	15.58	0.550	0.613	40.41	41.91	1.591	1.650	5
6-6	ERSB06-06G	7.95	11.13	0.313	0.438	15.56	17.16	0.613	0.676	42.01	43.51	1.654	1.713	6
6-7	ERSB06-07G	9.53	12.70	0.375	0.500	17.16	18.76	0.676	0.739	43.59	45.09	1.716	1.775	7
6-8	ERSB06-08G	11.13	14.30	0.438	0.563	18.73	20.33	0.737	0.800	45.19	46.69	1.779	1.838	8
6-9	ERSB06-09G	12.70	15.88	0.500	0.625	20.33	21.93	0.800	0.863	46.76	48.26	1.841	1.900	9
6-10	ERSB06-10G	14.30	17.48	0.563	0.688	21.91	23.51	0.863	0.926	48.36	49.86	1.904	1.963	10
6-11	ERSB06-11G	15.88	19.05	0.625	0.750	23.51	25.11	0.926	0.989	49.94	51.44	1.966	2.025	11
6-12	ERSB06-12G	17.48	20.65	0.688	0.813	25.08	26.68	0.987	1.050	51.54	53.04	2.029	2.088	12
6-13	ERSB06-13G	19.05	22.23	0.750	0.875	26.68	28.28	1.050	1.113	53.11	54.61	2.091	2.150	13
6-14	ERSB06-14G	20.65	23.83	0.813	0.938	28.26	29.86	1.113	1.176	54.71	56.21	2.154	2.213	14
6-15	ERSB06-15G	22.23	25.40	0.875	1.000	29.86	31.46	1.176	1.239	56.29	57.79	2.216	2.275	15
6-16	ERSB06-16G	23.83	27.00	0.938	1.063	31.43	33.03	1.237	1.300	57.89	59.39	2.279	2.338	16
6-17	ERSB06-17G	25.40	28.58	1.000	1.125	33.03	34.63	1.300	1.363	59.46	60.96	2.341	2.400	17
6-18	ERSB06-18G	27.00	30.18	1.063	1.188	34.61	36.21	1.363	1.426	61.06	62.56	2.404	2.463	18
6-19	ERSB06-19G	28.58	31.75	1.125	1.250	36.21	37.81	1.426	1.489	62.64	64.14	2.466	2.525	19
6-20	ERSB06-20G	30.18	33.35	1.188	1.313	37.78	39.38	1.487	1.550	64.24	65.74	2.529	2.588	20

2013.10.17

No, Alternation:

Date: Check: Approved:

Customer:  
3/16" Round Head Lock Pins

Customer's P/No:  
Customer's Drawing: