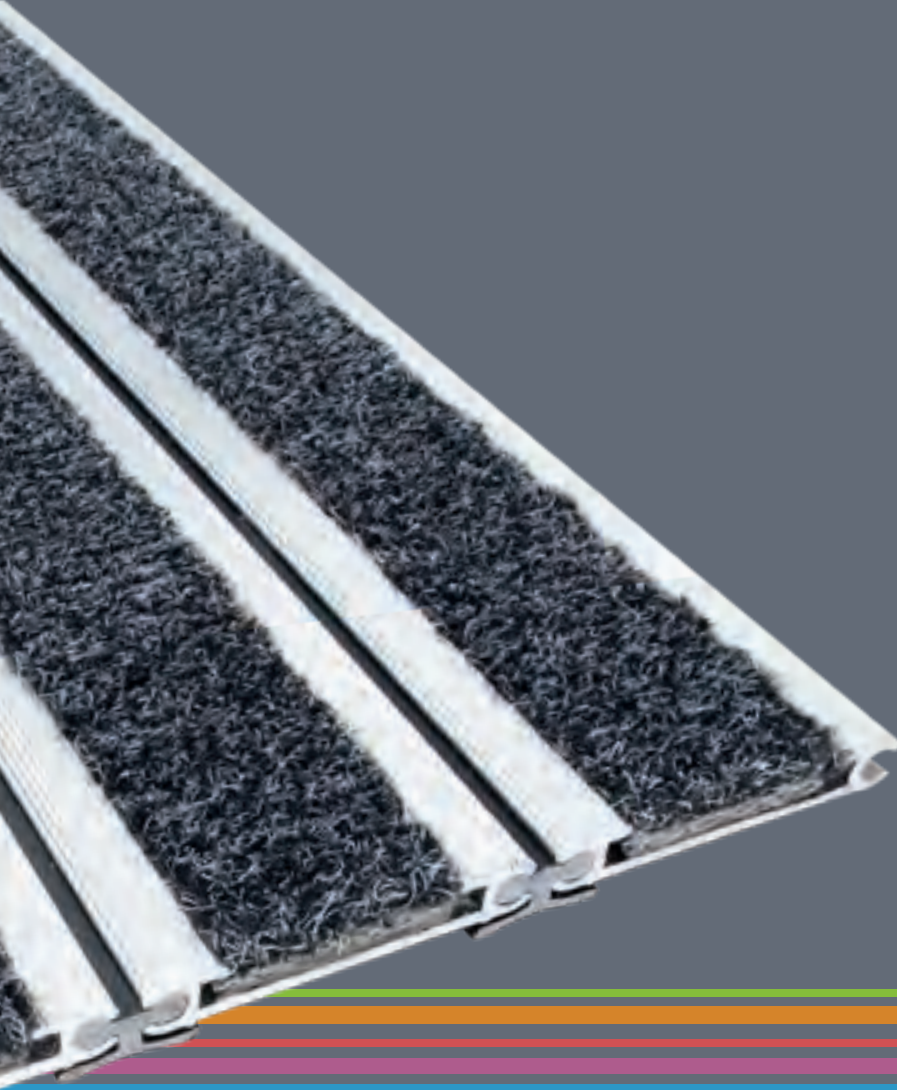


**mat.works**  
Entrance Solutions

Mat.Works is a Division of National Floorcoverings Ltd,  
the UK's leading manufacturer of commercial floor coverings.

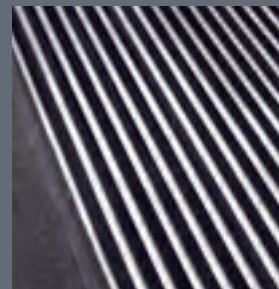
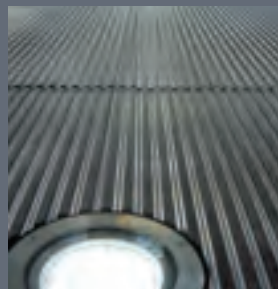
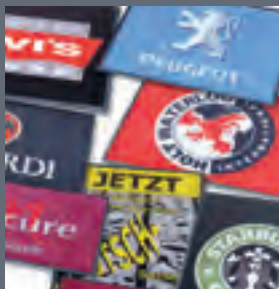
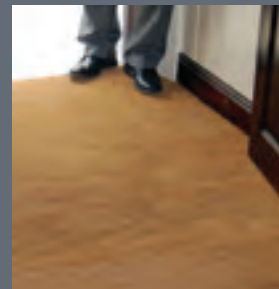
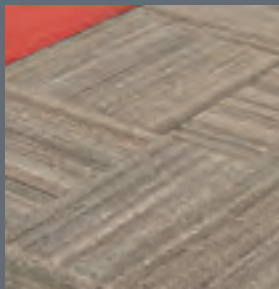
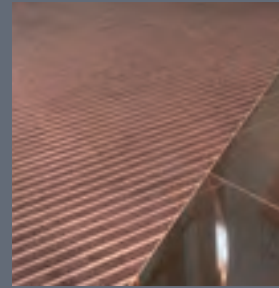


part of the group

**paragon**  
CARPET TILES



# Entrance Solutions



[pg6 National Floorcoverings](#)

[pg8 The 4.5 Meters Rule](#)

## ALUMINUM PRIMARY ENTRANCE SOLUTIONS

---

[pg14 How to choose your frameworks system](#)

[pg16 Frameworks 12](#)

[pg18 Frameworks 15C](#)

[pg20 Frameworks 17C & 22C](#)

[pg22 Frameworks 17CS](#)

[pg24 Frameworks 17OP & 22OP](#)

[pg26 Frameworks 17HD](#)

[pg28 Smartscraper](#)

[pg30 Gridmaster Eco](#)

## PRIMARY MODULAR SOLUTIONS

---

[pg36 Tyre Tile](#)

[pg38 Entrack50](#)

[pg40 Ext Mat](#)

## SECONDARY ENTRANCE SOLUTIONS

---

[pg46 Premier](#)

[pg48 Vista Dual](#)

[pg50 Workspace Entrance](#)

[pg52 Workspace Entrance Design](#)

## THROW DOWN & LOGO MATTING

---

[pg58 MW Print Mat](#)

[pg60 Coir Logo](#)

[pg62 Brush Logo](#)

[pg64 Coir](#)

[pg66 Coir Black](#)

[pg68 DDA Coir](#)

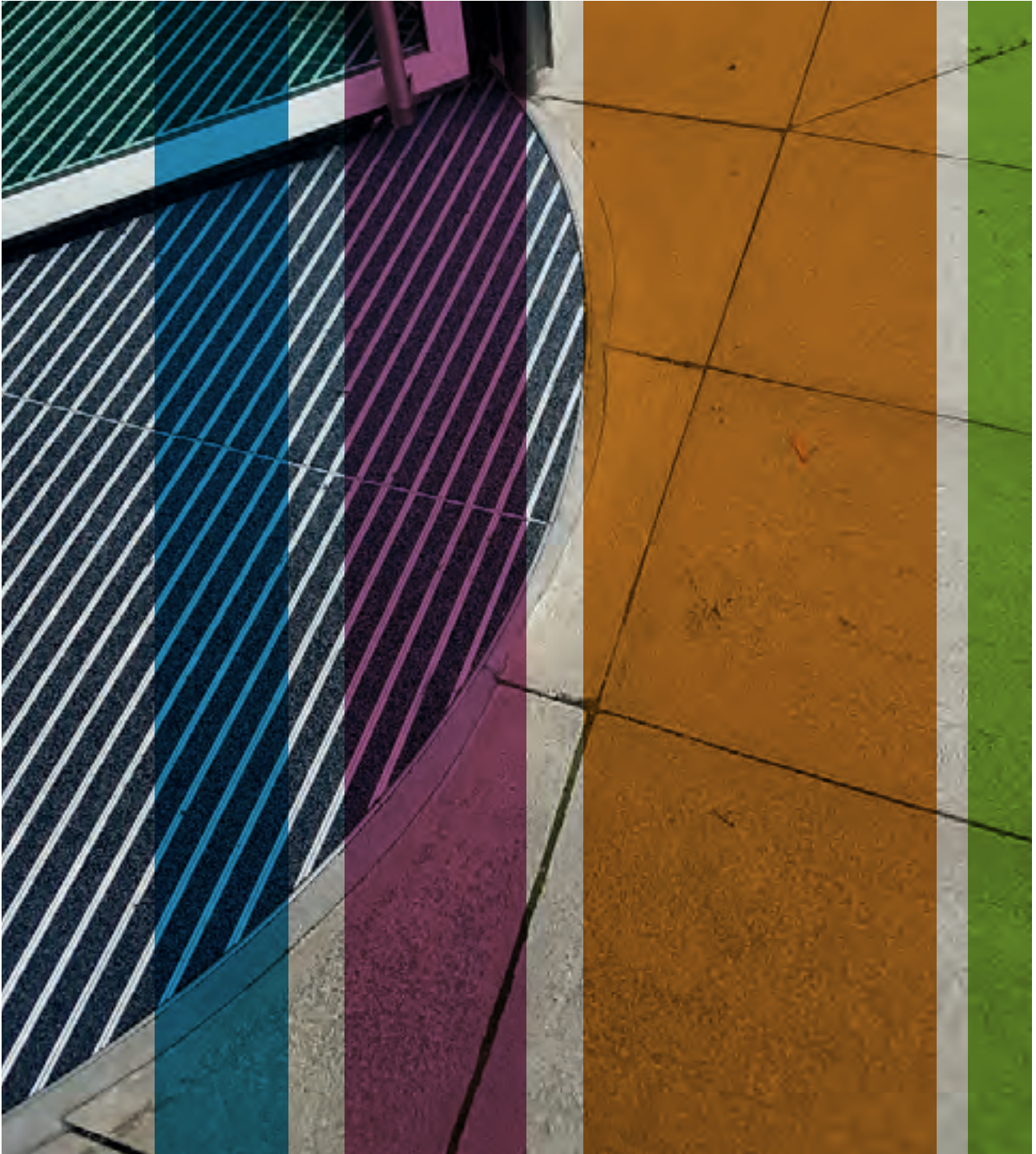
## TECHNICAL

---

[pg74 Cleaning & Maintenance](#)

[pg80 Accessories](#)





Frameworks 17c with Workspace Entrance with Victor inserts - Astra Zeneca, Speke







The Group is  
committed to UK  
manufacturing  
and the very best  
environmental  
practises

# National Floorcoverings

## Our Heritage - Our Future

Producing a wide variety of products from entrance matting, fibre bonded carpets for the education market, tufted carpet and tiles for the commercial sector to specialised indoor and outdoor sports surfaces, the group has expertise in all flooring fields.

National Floorcoverings is a UK family owned business which, along with associated family businesses, has a turnover exceeding £60m.

The family is dedicated to maintaining and developing its UK manufacturing base with customer support. It takes a colossal supply network to ensure a combined 500,000 sq.ft. of facilities run efficiently 365 days of the year. In support of the local community, suppliers are often used in the surrounding vicinity of the factories.

Across the UK, the group employs over 350 people, most of which are local to the five manufacturing facilities in Yorkshire and Derbyshire.

By striving to be No.1 in sustainable design for flooring solutions the family of companies has established strong international export presence in more than 50 countries.

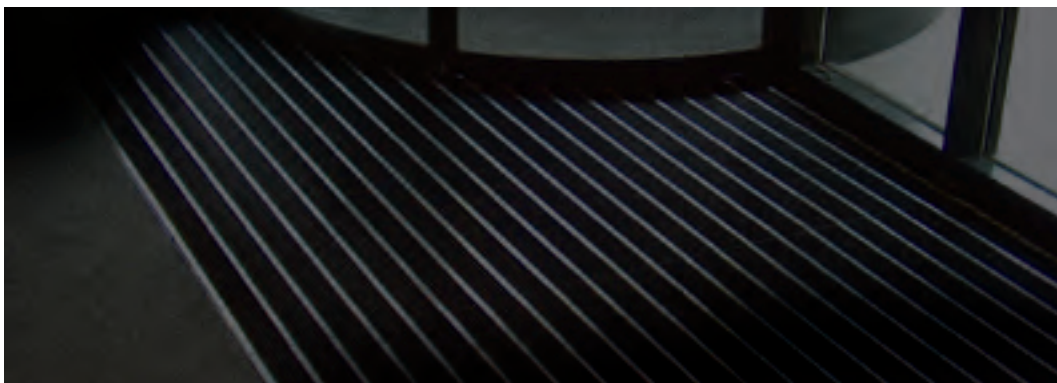
Where tested, the group has BRE 'A+' Ratings for its products, being the highest environmental standard currently available.

With clients such as Google, Apple, Local Authorities, the Health Service, the Ministry of Defence, there is always a requirement to provide the highest quality products using the most technologically advanced production processes and therefore commanding a route to the future.



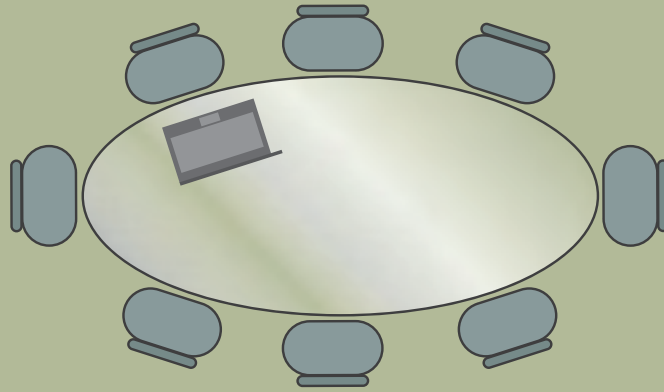
National Floorings Companies  
Heckmondwike-FB (239,677 ft2 facility)  
Paragon (98,000 ft2 facility)  
Play-Rite (39,677 ft2 facility)  
Mat.Works (Part of Paragon)

Associated Family Companies  
Granwood (64,000 ft2 facility)  
Granwax (22,000 ft2 facility)  
Geofabrics (45,000 ft2 facility)





# BOARDROOM



MEDIUM FOOTFALL - area often requiring designed carpet tiles or secondary products

CORRIDOR

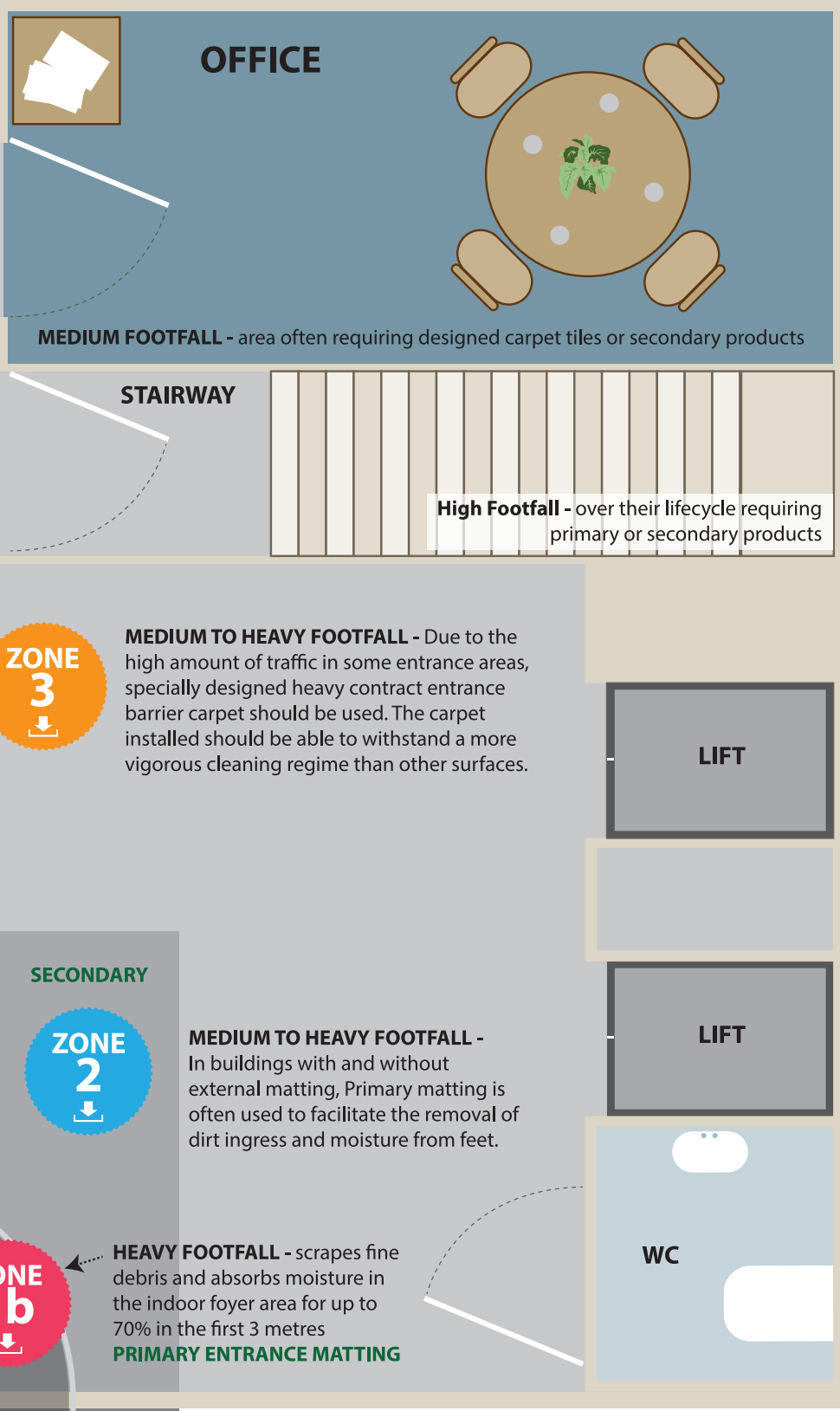
ZONE 3

# RECEPTION



4.5 Meters

REVOLVING DOOR



**OFFICE**

**MEDIUM FOOTFALL** - area often requiring designed carpet tiles or secondary products

**STAIRWAY**

**High Footfall** - over their lifecycle requiring primary or secondary products

**ZONE 3**

**MEDIUM TO HEAVY FOOTFALL** - Due to the high amount of traffic in some entrance areas, specially designed heavy contract entrance barrier carpet should be used. The carpet installed should be able to withstand a more vigorous cleaning regime than other surfaces.

**SECONDARY**

**ZONE 2**

**MEDIUM TO HEAVY FOOTFALL** - In buildings with and without external matting, Primary matting is often used to facilitate the removal of dirt ingress and moisture from feet.

**ZONE 1b**

**HEAVY FOOTFALL** - scrapes fine debris and absorbs moisture in the indoor foyer area for up to 70% in the first 3 metres  
**PRIMARY ENTRANCE MATTING**

**ZONE 1a**

**Heavy Footfall** - Up to 40% of dirt/moisture is removed from shoes in the first 1.5 metres  
**EXTERIOR BARRIER MATTING**

**ZONE 1** In Zones 1a and 1b the installation of exterior matting catches the first wave of heavy debris in a high traffic area, ensuring the removal of up to 40% of dirt and moisture from entering the building. An effective primary entrance mat will continue the removal of dirt and moisture working with the external matting containing any heavy debris.

**ZONE 2** In these zones a high specification secondary barrier mat will continue the cleaning and scraping process, removing up to 70% of remaining dirt and moisture. At this stage dust is also driven into the matting rather than remaining airbourne.

**ZONE 3** In buildings with a very high volume of traffic, primary matting is often supplemented into secondary areas, loose lay matting and logo mats are used to reduce dust migration throughout main corridors and completely remove remaining dirt and moisture from shoes completing the drying process and protecting your building investment.

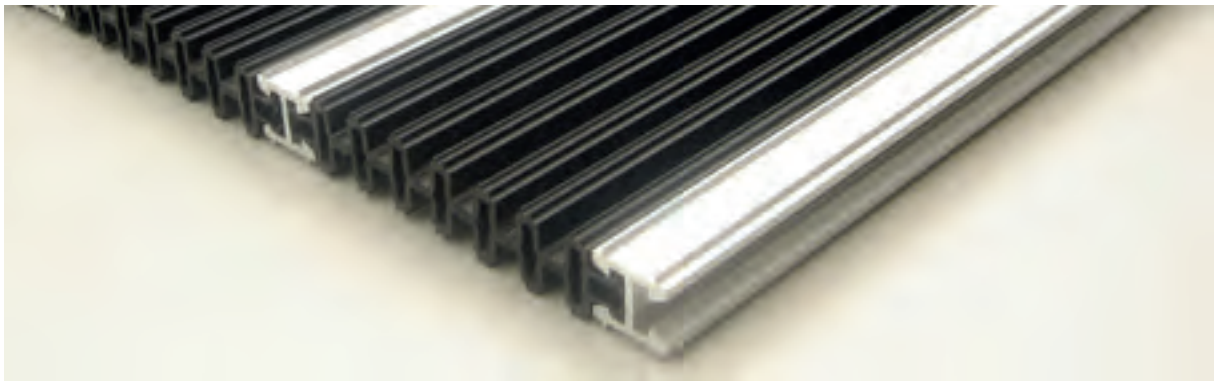
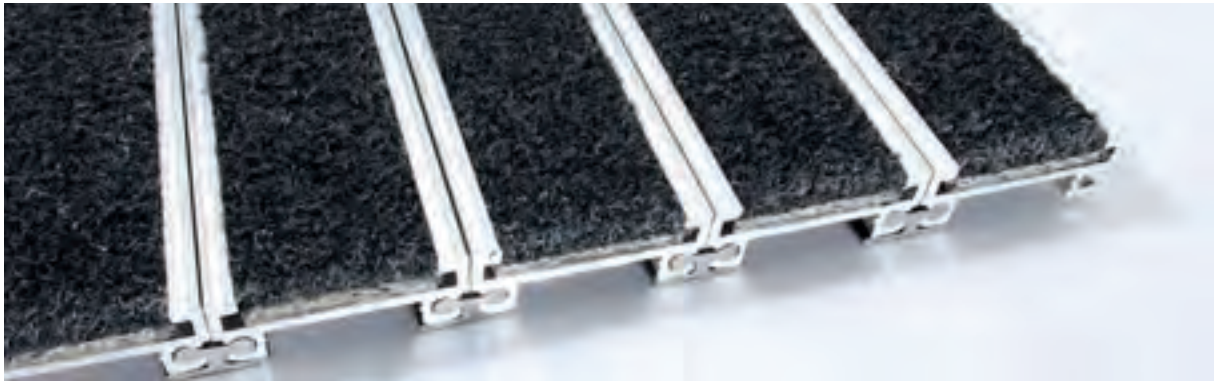
# surefooted





# reliability everyday





“Heavy duty matting for heavy traffic areas, the first line of defence against dirt and moisture. **Primary products** are tough, versatile and often - recessed into the floor”

**aluminium**

frameworks  
smartscraper  
gridmaster eco

**primary**

**entrance**

**solutions**



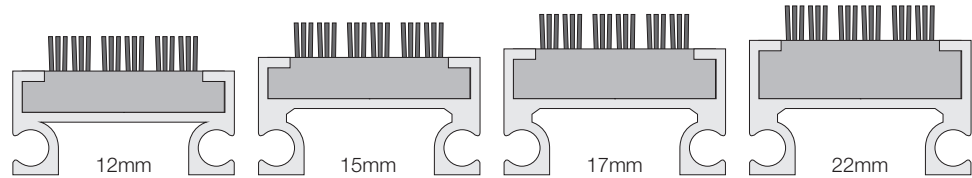
# FRAMEWORKS

Frameworks is a unique range of tough and durable aluminium extruded entrance systems with a range of insert options.

## How to choose your frameworks system:

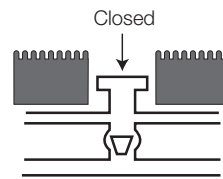
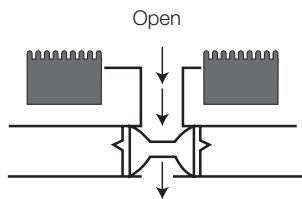
### Stage 1:

Select your height



### Stage 2:

Pick your construction



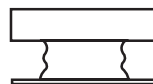
Open - collect dirt and moisture inside the mat/matwell rather than on the surface. Rollable for cleaning.  
Closed - Dirt and moisture collected on the surface of the mat.

### Stage 3:

Pick your insert from 13 options



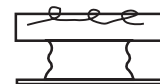
Rib



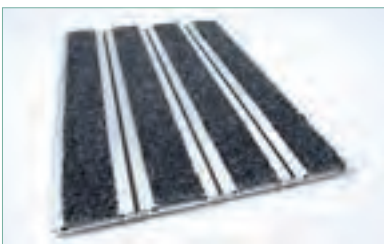
Workspace Entrance



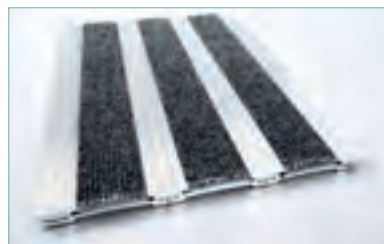
Ext Mat



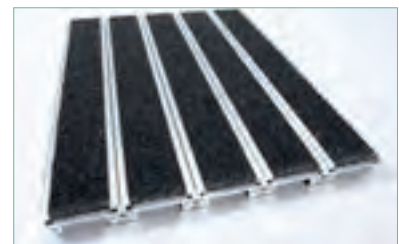
Premier



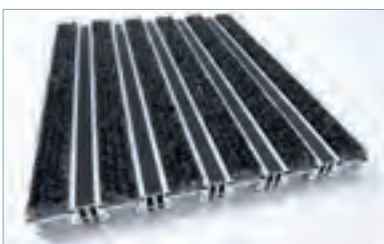
Frameworks 12 - pg 14



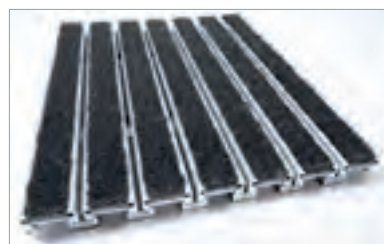
Frameworks 15C - pg 16



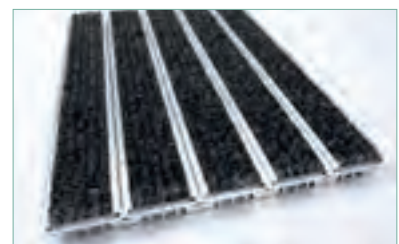
Frameworks 17C - pg 18



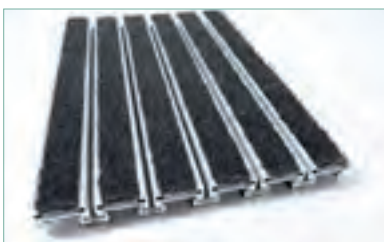
Frameworks 17CS - pg 20



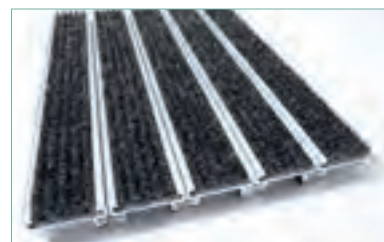
Frameworks 17DR - pg 23



Frameworks 17HD - pg 24



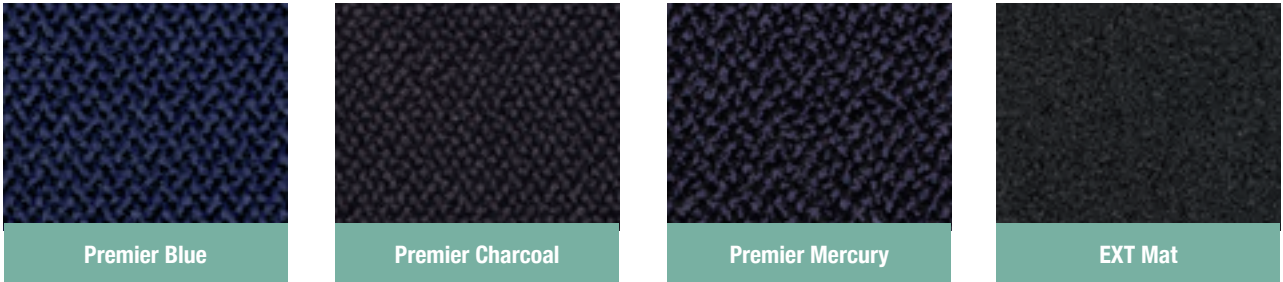
Frameworks 17OP & 22OP - pg 22



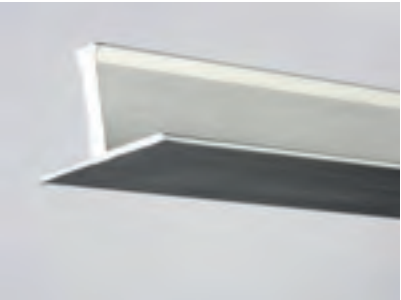
Frameworks 22C - pg 18

**C** = Closed  
**CS** = Closed Scraper  
**DR** = Drainable  
**HD** = Heavy Duty  
**OP** = Open

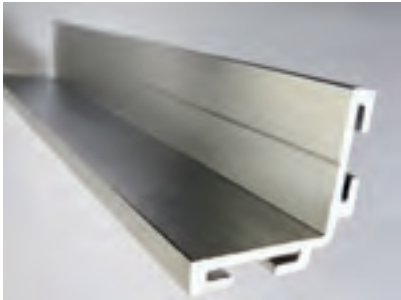
# Available Colourways :



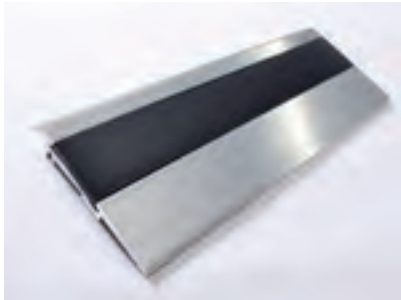
# Accessories :



T-bar



10mm-25mm Framing



MW Ramp System





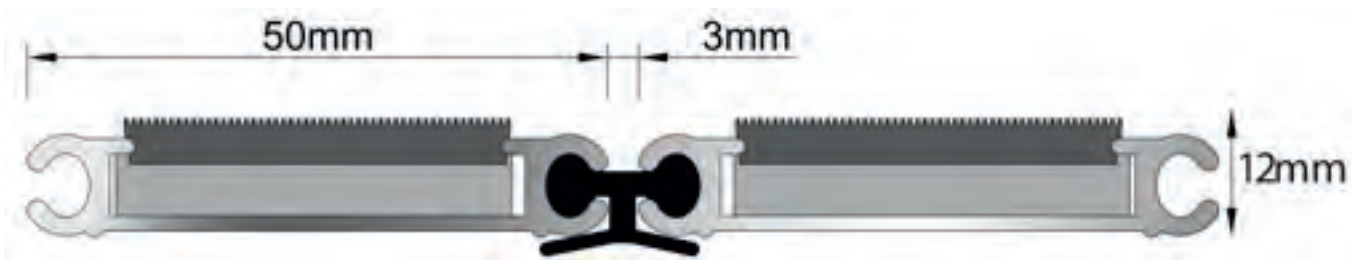
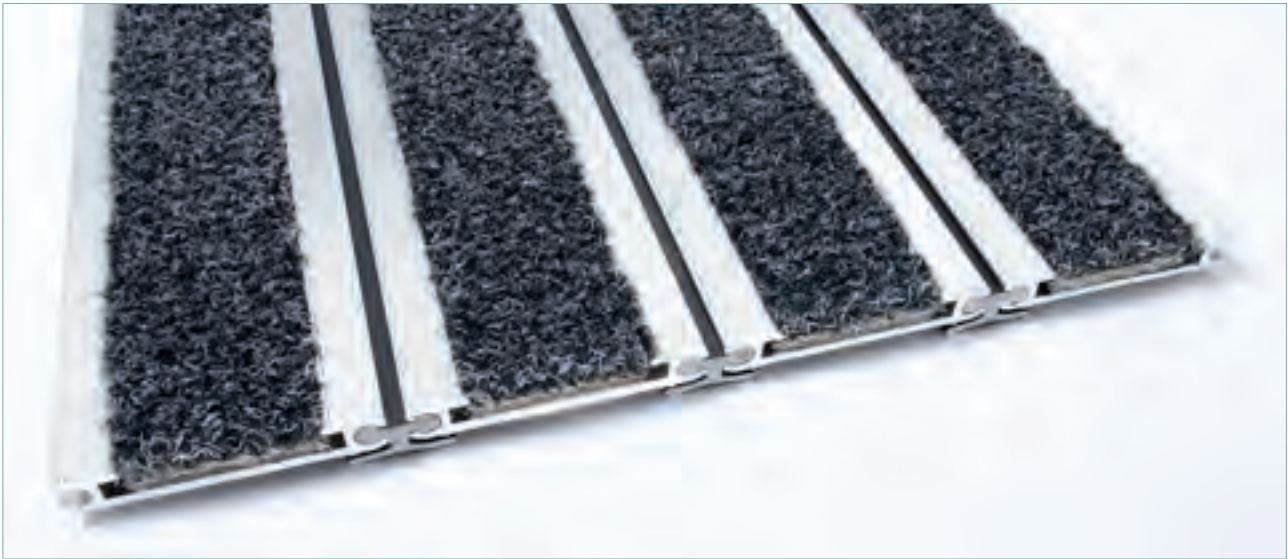
# FRAMEWORKS 12



Images for illustrative purposes only - for a true likeness order a sample tile







### Description:

- Low profile rollable aluminium grid matting system suitable for heavy traffic areas.
- Ideal for recess matwells or areas where surface mounting is required.
- The extruded aluminium profiles are assembled using PVC hinges which incorporates an integral damper strip. PVC hinges enable easier on site shaping.
- Custom made to required sizes
- Ramping available for surface mounting
- Insert options available to allow for external use

### Colour options amend:

13 colour options available :See page 15

### Accessories:

#### You may also be interested in:

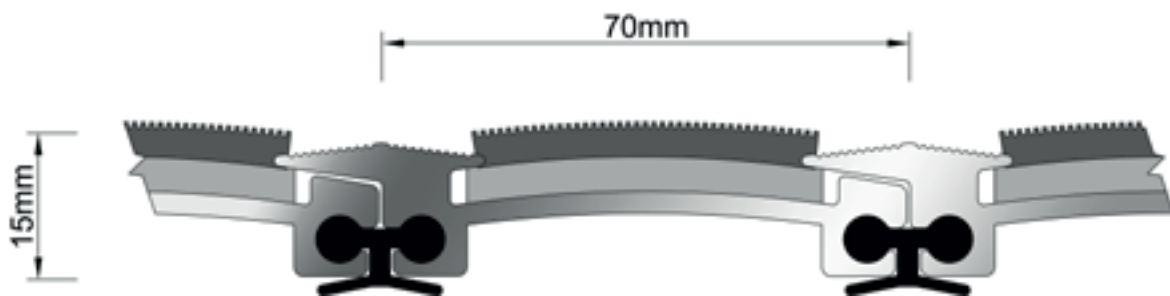
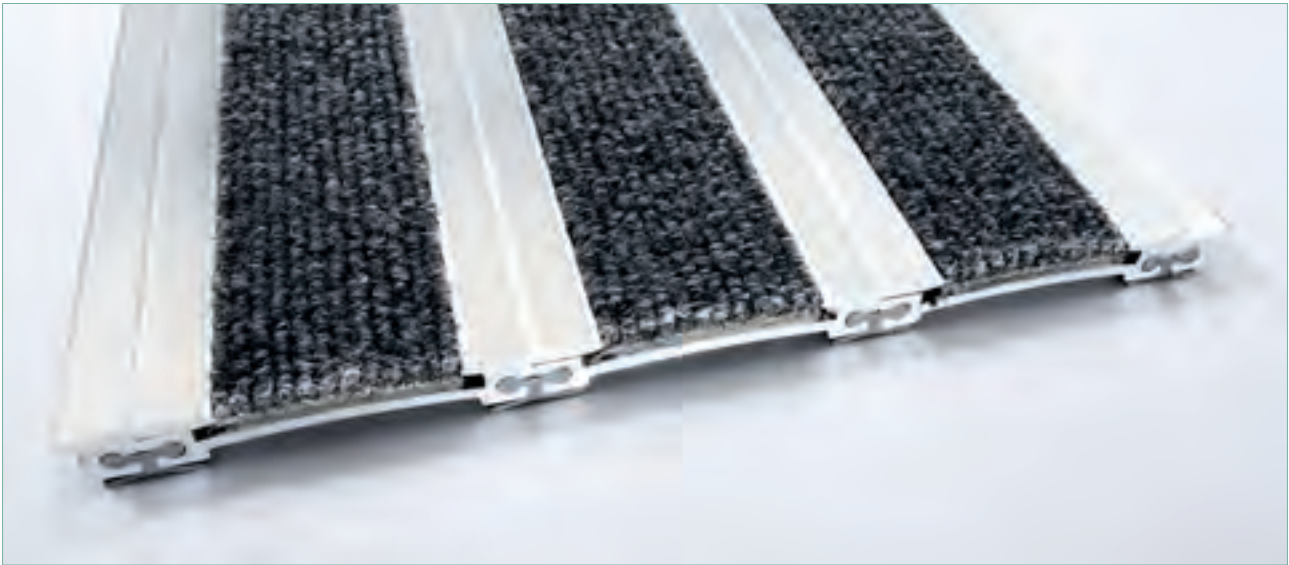
Frameworks accessories – see page 80 for further details. For simple rectangular mats, Frameworks can be made to exact requirements. For more complicated shapes, Mat.Works recommends one of our approved installers.

# FRAMEWORKS 15C



Images for illustrative purposes only - for a true likeness order a sample tile





## Description:

- Heavy gauge 15C entrance matting system.
- Frameworks 15C incorporates an arch form heavy gauge aluminium chassis, capable of withstanding extreme traffic in the most demanding applications.
- 42mm wide wiper inserts provides optimum contact area for absorbency and soil collection.
- Wide variety of wiper strips to suit almost any application with 13 different colourways.
- Assembled using PVC hinges which incorporate an integral damper strip. PVC hinges enable easier on site shaping.
- Custom made to required sizes

## Colour options amend:

13 colour options available :See page 15

## Accessories:

### You may also be interested in:

Frameworks accessories – see page 80 for further details. For simple rectangular mats, Frameworks can be made to exact requirements. For more complicated shapes, Mat.Works recommends one of our approved installers.

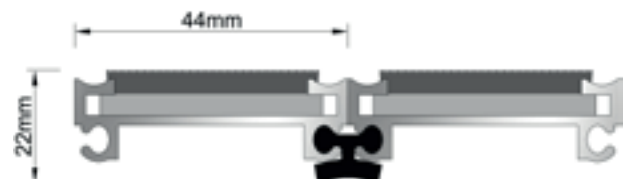
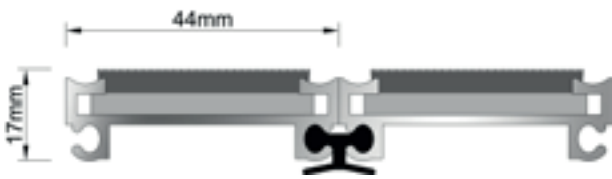
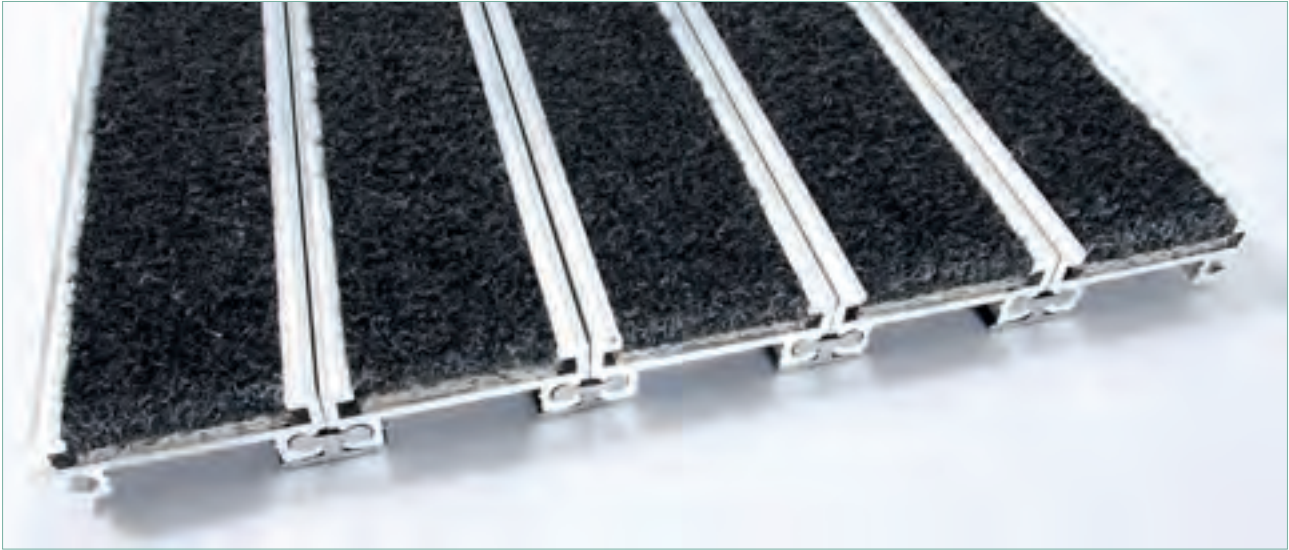


# FRAMEWORKS 17C & 22C



Images for illustrative purposes only - for a true likeness order a sample tile





## Description:

- Heavy duty primary entrance mat with exceptional performance.
- Frameworks 17C and 22C closed construction ensures that all debris is captured by the mat surface to ensure a convenient cleaning operation.
- Suitable for both footfall and trolley traffic.
- Wide variety of wiper strips to suit almost any application with 13 different colourways.
- The extruded aluminium profiles are assembled using PVC hinges which incorporates an integral damper strip. PVC hinges enable easier on site shaping.
- Custom made to required sizes

## Colour options amend:

13 colour options available :See page 15

## Accessories:

### You may also be interested in:

Frameworks accessories – see page 80 for further details. For simple rectangular mats, Frameworks can be made to exact requirements. For more complicated shapes, Mat.Works recommends one of our approved installers.

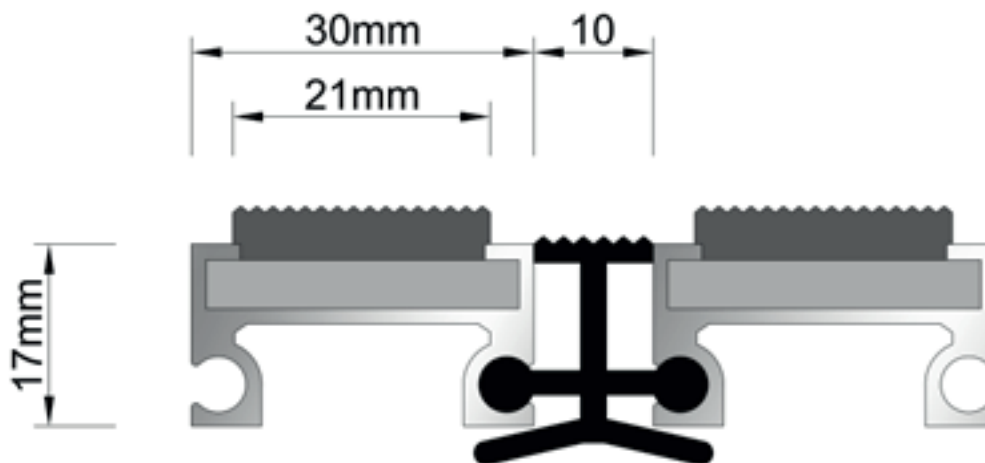
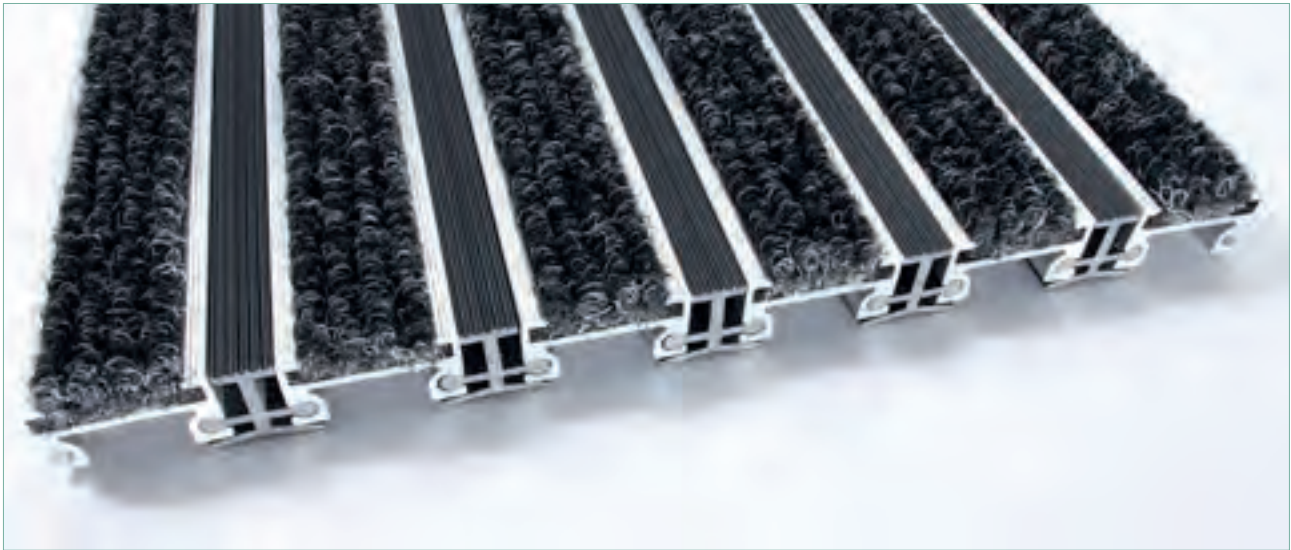


# FRAMEWORKS 17CS



Images for illustrative purposes only - for a true likeness order a sample tile





### Description:

- Frameworks 17CS aluminium based entrance mat is ideal for heavy traffic areas.
- Frameworks 17CS is a closed construction primary entrance mat combining textile wiper inserts with alternate PVC scraper bars allowing for dirt and moisture to be taken off in one movement.
- Wide variety of wiper strips to suit almost any application with 13 different colourways.
- Custom made to required sizes

### Colour options amend:

13 colour options available :See page 15

### Accessories:

#### You may also be interested in:

Frameworks accessories – see page 80 for further details. For simple rectangular mats, Frameworks can be made to exact requirements. For more complicated shapes, Mat.Works recommends one of our approved installers.

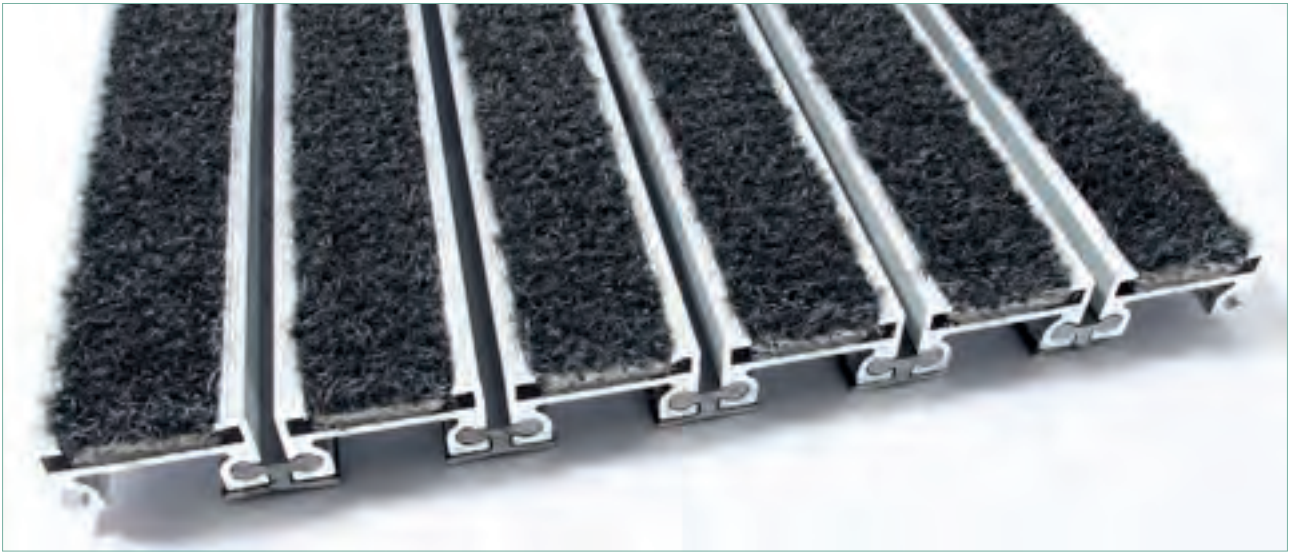
# FRAMEWORKS 170P & 220P



Images for illustrative purposes only - for a true likeness order a sample tile

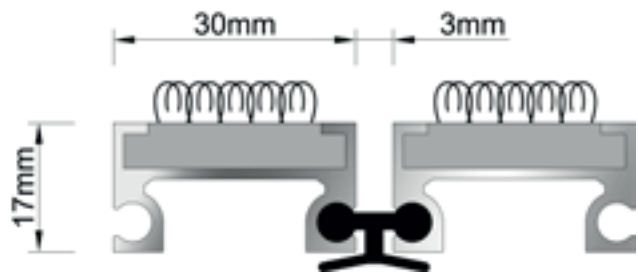




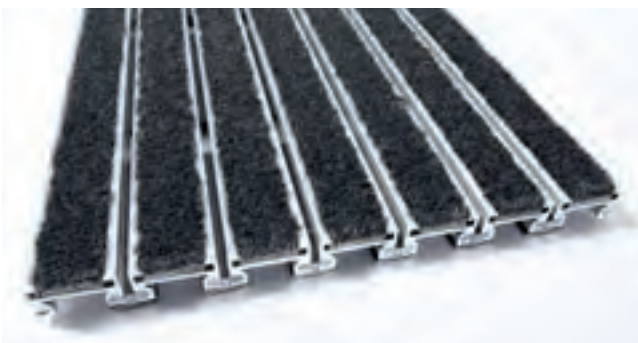


## Description:

- Frameworks 17OP and 22OP are heavy traffic entrance matting systems. Both systems incorporate a rollable, grid style, open surface construction. The open surface grid system allows dirt to fall into specially designed debris channels whilst allowing the textile inserts to wipe moisture from feet.
- Wide variety of wiper strips to suit almost any application with 13 different colourways.
- The extruded aluminium profiles are assembled using PVC hinges which incorporates an integral damper strip. PVC hinges enable easier on site shaping.
- Custom made to required sizes



## A drainable 17DR is also available



## Colour options amend:

13 colour options available : See page 15

## Accessories:

### You may also be interested in:

Frameworks accessories – see page 80 for further details. For simple rectangular mats, Frameworks can be made to exact requirements. For more complicated shapes, Mat.Works recommends one of our approved installers.

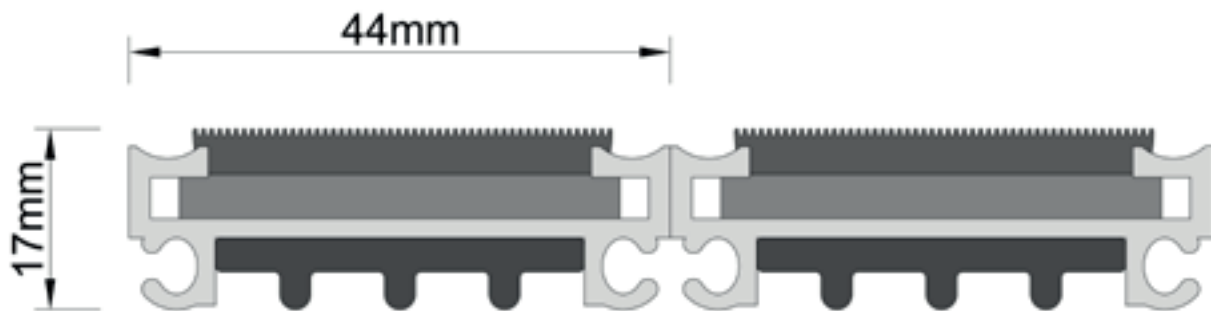
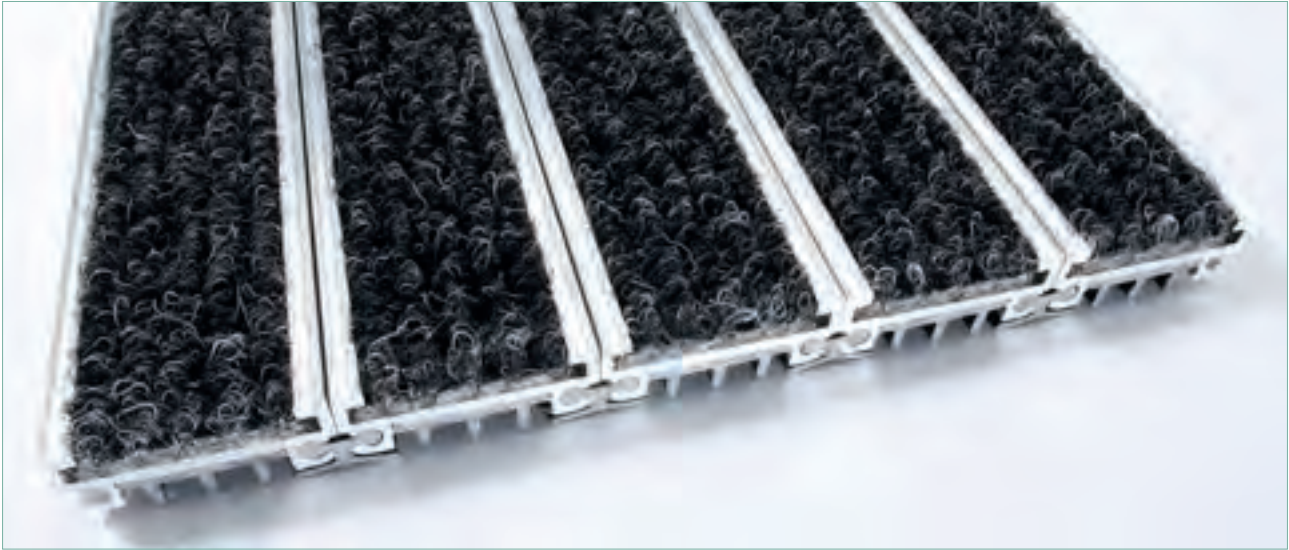
# FRAMEWORKS 17HD



Images for illustrative purposes only - for a true likeness order a sample tile







### Description:

- Frameworks 17HD is ideal for extremely heavy traffic areas in the most demanding of applications. The aluminium base along with PVC undercarriage support strips allowing for excellent point loading.
- Wide variety of wiper strips to suit almost any application with 13 different colourways.
- The extruded aluminium profiles are assembled using PVC hinges which incorporates an integral damper strip. PVC hinges enable easier on site shaping.
- Custom made to required sizes

### Colour options amend:

13 colour options available :See page 15

### Accessories:

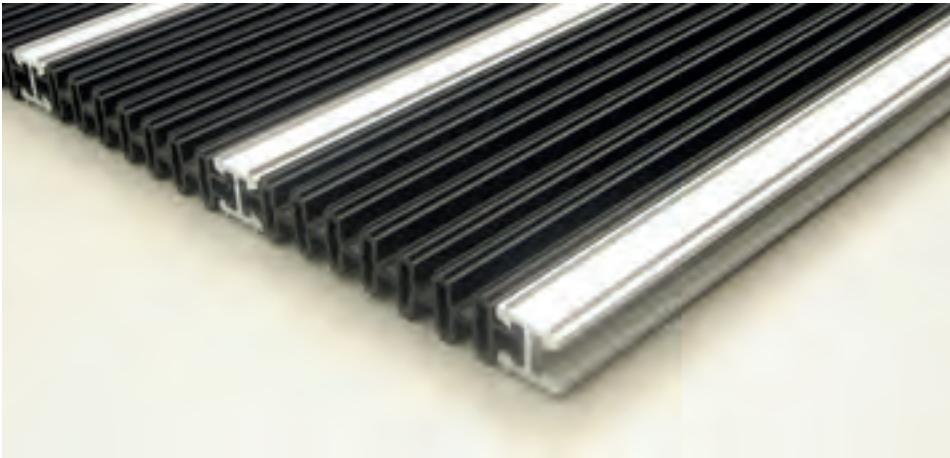
#### You may also be interested in:

Frameworks accessories – see page 80 for further details. For simple rectangular mats, Frameworks can be made to exact requirements. For more complicated shapes, Mat.Works recommends one of our approved installers.

# SMARTSCRAPER

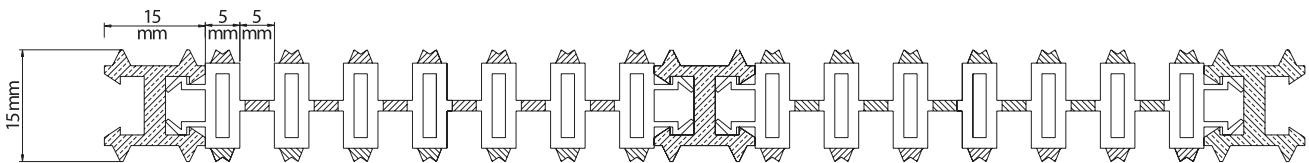


Images for illustrative purposes only - for a true likeness order a sample tile



Smartscraper is suitable for heavy traffic situations.

The surface has soft anti-slip PVC inserts which scrape away moisture and dirt.



## Description

Co-extruded PVC profiles combine the strength of the hard PVC with the soft, flexible and anti-slip profiles. The PVC profiles are separated by aluminium scraper bars. The unique interlocking system minimises the components used and enhances the strength and flexibility of the mat.

## Product Specifications:

An open tread design which effectively collects dirt below the surface of the mat, manufactured from co-extruded PVC with aluminium connector bars. Smartscraper is rollable and reversible which facilitates easy cleaning and maintenance.

## Function:

Smartscraper is an entrance matting system suitable for heavy traffic situations. The surface has soft anti-slip PVC, which scrapes away moisture and dirt. The scraped dirt is then trapped below the walking surface thus preventing dirt from being carried into the building and helping to reduce slip and fall accidents, as well as maintenance costs. The product is a rollable and reversible scraper mat for both interior and exterior applications. Smartscraper is suitable for high heels, wheelchairs and shopping trolleys. For heavy duty areas Mat.Works recommends the use of floor clips to hold the mat in place.

## Technical Data:

Weight	9300 gsm
Thickness	15mm
Aluminium	AL.MG. Si 0.5
PVC	1.37 g/cm <sup>3</sup>
Nominal Tensile stress (DIN 53455)	52 Mpa
Tensile strength at yield (DIN 53455)	50 Mpa
Elongation at break (DIN 53455)	40-80%
Fire rating	B1 / Q1
Colour Options Available	Black

## Accessories:

### You may also be interested in:

Smartscraper accessories – see page 80 for further details.

The Smartscraper mat, due to its construction, is easily shaped on site, making cuts such as revolving doors much easier to handle. For a superior finish, additional T-Bar profiles for joints, matwell frames and ramping are available for this and the other products.



# GRIDMASTER ECO



Images for illustrative purposes only - for a true likeness order a sample tile



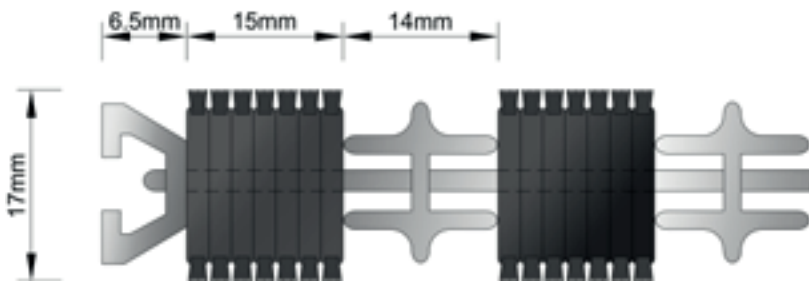




Gridmaster Eco



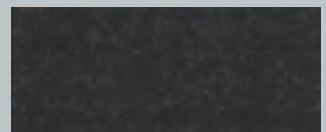
Gridmaster Eco Black



Galvanised steel rods join the strips and profiles at 38mm intervals to provide maximum strength.



Standard - Grey



Black

## Description

Manufactured from 100% recycled Tyres taken from cars, vans, trucks, Buses and bicycles that would otherwise

Have been sent to landfill and burned rubber strips with nylon fibres are inserted between two scraper profiles in aluminium. Galvanised steel rods join the strips and profiles at 38mm intervals to provide maximum strength. The mats are supplied in separate sections, which can be fitted together perfectly.

## Function:

Gridmaster Eco soil resistant mats are specifically recommended for covered areas, preferably recessed into the floor. These mats are designed for heavy duty wear in situations such as shopping centres, hospitals and public buildings. The Gridmaster Eco mat is non-slip and extremely stable therefore this type of mat is absolutely safe for wheelchairs, high heels and walking sticks.

## Technical Data:

Weight	17800gsm / 13800gsm
Thickness	18mm / 13mm
Nylon	Standard – Grey, Options – Eco Gridmaster & Gridmaster Eco Black
Rubber	Polychloroprene / nylon surface
Aluminium	AL.MG. Si 0.5
Assembly rods	Galvanised Steel
Space between rods	38mm
Colour Options Available	2

## Accessories:

### You may also be interested in:

Gridmaster accessories – refer to page 80 in the Matworks brochure for further details.

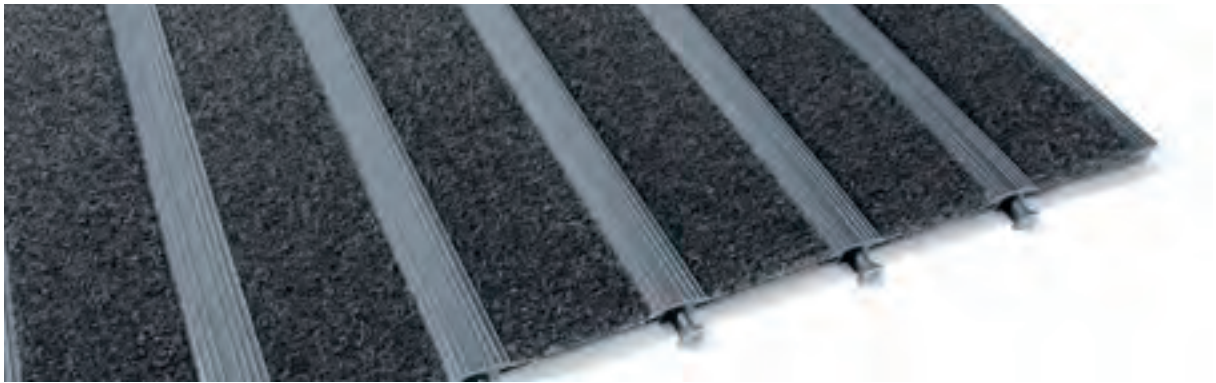
The mats are manufactured in sections, measuring a maximum of 50cm x 300cm. When installed the combined sections will appear as one mat. Gridmaster matting is a custom engineered system, rectangles and squares are made to measure to the millimetre. For more complicated shapes such as revolving doors Mat.Works recommends one of our approved installers.



Frameworks 12mm - Coventry University







**“Primary entrance solutions** constructed from recycled rubber and polymers”



tyre tile  
entrack50  
ext mat

# primary modular solutions

# TYRE TILE



Images for illustrative purposes only - for a true likeness order a sample tile





Primary Entrance Matting - Manufactured using 100% recycled rubber



Tyre Tile

## Tyre Tile a fully recycled closed loop product

**Mat.Works has developed a value engineered product that is also a fully recycled matting system.**

Tyre Tile incorporates recycled tyres as wiper strips within the products. Everyday 100,000 tyres are taken from cars, vans, trucks, buses and bicycles, what happens to them? Until recently most were either dumped or burnt, both of which are extremely harmful to the environment. Tyres that are illegally dumped in the countryside or in land fills are virtually impossible to break down due to the synthetic and chemical materials inside them, and when burnt these cause dense smoke and toxic fumes, many of which cause a damaging carbon footprint, we have introduced Tyre Tile as a product which has very little impact on the environment and as it uses 100% recycled or recyclable source material is value engineered to ensure it can fit into any project.

This gives us, the manufacturer, and you the consumer, the opportunity to reduce our carbon footprint by not using raw materials from source.

### Function:

Tyre Tile soil resistant mats are specifically recommended for covered areas, preferably recessed into the floor. These mats are designed for heavy duty wear in situations such as shopping centres, hospitals and public buildings. The Tyre Tile mat is non-slip and extremely stable therefore this type of mat is absolutely safe for wheelchairs, high heels and walking sticks.

### Technical Data:

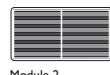
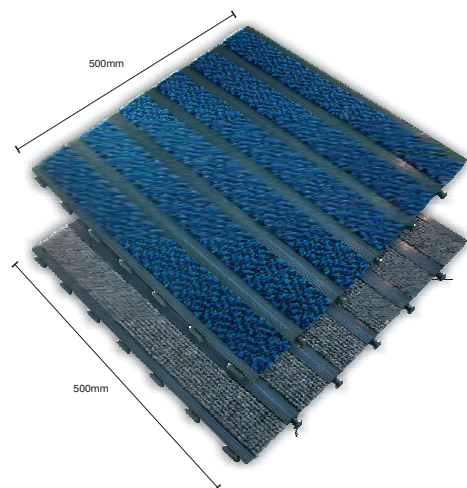
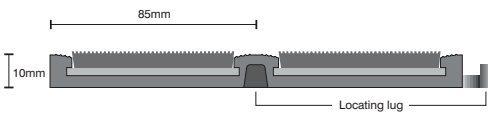
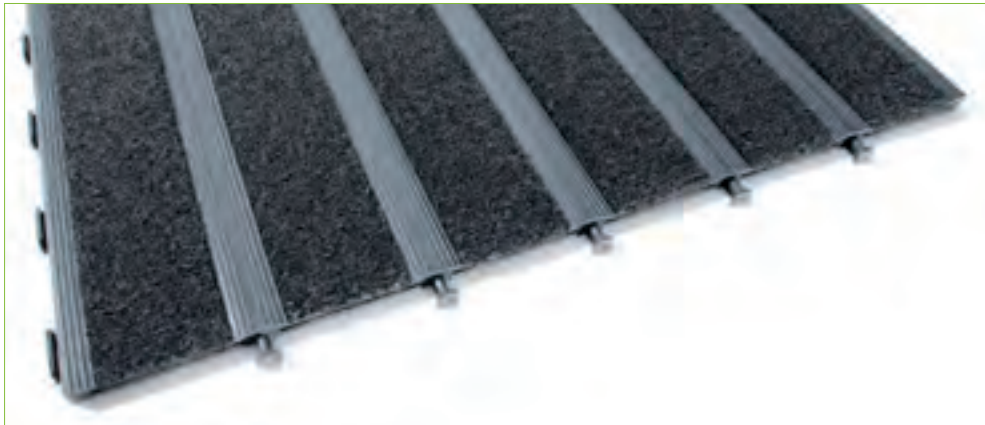
Weight	8410 gsm
Thickness	10mm
Composition	Rubber Tyre with Nylon Tread
Backing	Polyethylene Webbing
Tile Size	304mm x 304mm
Wear Classification	Heavy Contract
Flammability	
DIN 4102	B1
Colour Fastness	
To light	6
Wet Rubbing	4-5
Dry Rubbing	5
Wet Shampoo	4-5
Colours Options	



# ENTRACK50



Images for illustrative purposes only - for a true likeness order a sample tile



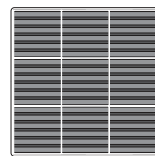
Module 2



Module 4



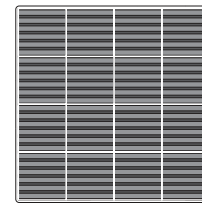
Module 6



Module 9



Module 12



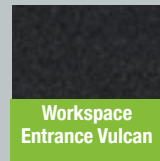
Module 16

Connect entrack50 together to create any size entrance mat required

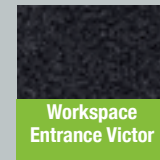
Recyclable and reusable, versatile TPE modular matting solution



EXT Mat



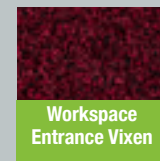
Workspace Entrance Vulcan



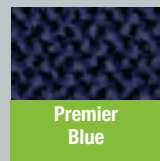
Workspace Entrance Victor



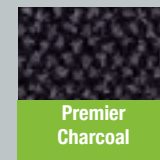
Workspace Entrance Viscount



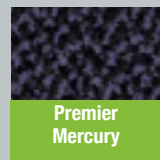
Workspace Entrance Vixen



Premier Blue



Premier Charcoal



Premier Mercury

## Description

A flexible modular system made from TPE which won't expand, contract or fade in colour. An extremely versatile product, Entrack50 carpet strips are interchangeable to reduce life-cycle costs and the product is suitable for entrances with or without matwells.

- High specification low profile platform
- Easy to cut and shape to bespoke patterns
- Recyclable and reusable
- Won't tap, bounce or buckle under heavy footfall
- Easily cut and trimmed on site
- Made in Britain
- Suitable for external or internal areas

## Technical Data:

size	500mm x 500mm x 10mm
Insert width	85mm
connection	integral 'lock down' fixing system
Colourway options	11
Environmental options	Recyclable and reusable
Base	Non-pvc polymer base

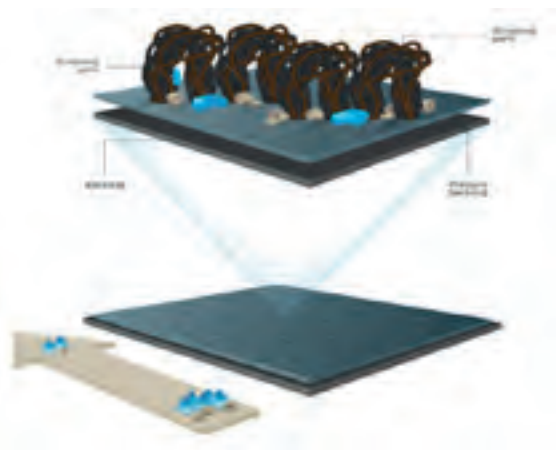
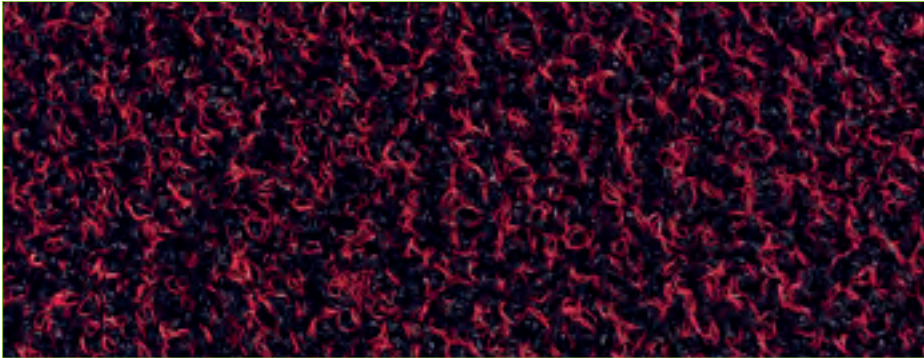


# EXT MAT



Images for illustrative purposes only - for a true likeness order a sample tile





## Description

MW-EXT is a special outdoor mat that pairs scraping qualities with moisture absorption. The outdoor mat is available in three colours and suits every entrance.

MW-EXT is a robust mat that is ideal for heavy commercial use. It works best in entrance areas, stairwells, hospitality areas & lifts, for example, in commercial buildings and medium-sized and large offices.

MW-EXT stands out in terms of moisture absorption. Consequently, the mat is optimised for scraping. Small areas of dirt in the mat are not visible. This product can be used inside or outside and provides a durable solution in high traffic areas thanks to its Bouclé construction. The slightly blended design features coarse yarns only.

MW-EXT is a versatile outdoor mat fitting many different situations.

This is down to its practical and versatile appeal. Even if the mat is used indoors it continues to perform to the highest standards by preventing dirt and moisture ingress reaching internal floors within a building.

Recyclable and reusable,  
versatile TPE modular  
matting solution



Brown



Red



Anthracite

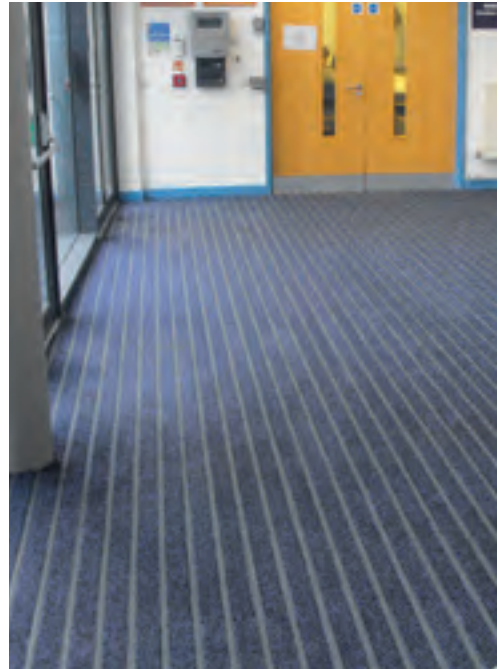
## Technical Data:

Pile material	100% Polyamide
Backing	PVC
Primary backing	nonwoven PET/PA
Yarn construction	Bouclé
Pattern	Blended
Colours	3
Pile weight ISO 8543	± 600 g/m <sup>2</sup>
Total weight ISO 8543	± 3,000 g/m <sup>2</sup>
Pile height ISO 1766	± 6.5 mm
Total height ISO 1765	± 8.0 mm
Pile density ISO 8543	0.079 g/cm <sup>3</sup>
Number of stitches ISO 1763	± 64,500 /m <sup>2</sup>
Use classification EN 1307	33
Wearing class EN 1963	33
Comfort EN 1307	LC1
Suitability for stairs EN 1963	Intensive use
Suitability for castor chairs EN 985	Occasional use
Dimensional stability ISO 2551	<0.4%
Light fastness ISO 105 B02	>7
Water fastness ISO 105 B01	4 – 5
Rubbing fastness ISO 105 X12	4 – 5
Salt water ISO 105 E02	4 – 5
Shampoo BS 1006	4 – 5
Organic solvents ISO 105 X05	4 – 5
Absorption capacity TNO W6034	± 3.8 l/m <sup>2</sup>
Flammability Euroclass EN13501	Cfl /s1
Slip resistance EN13893	DS
Static charge ISO 6356	<0.1 kV
Static charge ISO 6356	Available
Roll Widths	100 & 200 cm
Roll length	± 20 m
Sizes mats	60/90 & 90/150 cm

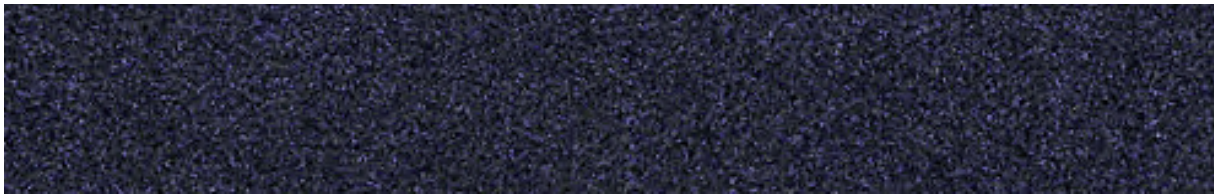
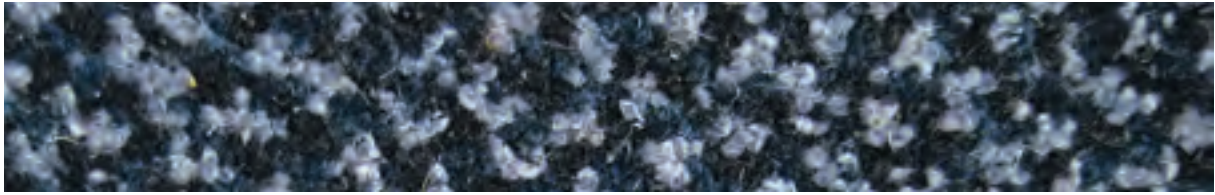


Entrack50 - Loughborough University









“The **second line of defence** comes in the form of our Tufted entrance carpets and tile ranges.

Designed as standalone products for medium to high traffic areas or part of a 2 step system for very high traffic areas. A collection with numerous designs and colour options to suit any interior decor”

# secondary entrance solutions

premier

vista dual

workspace entrance

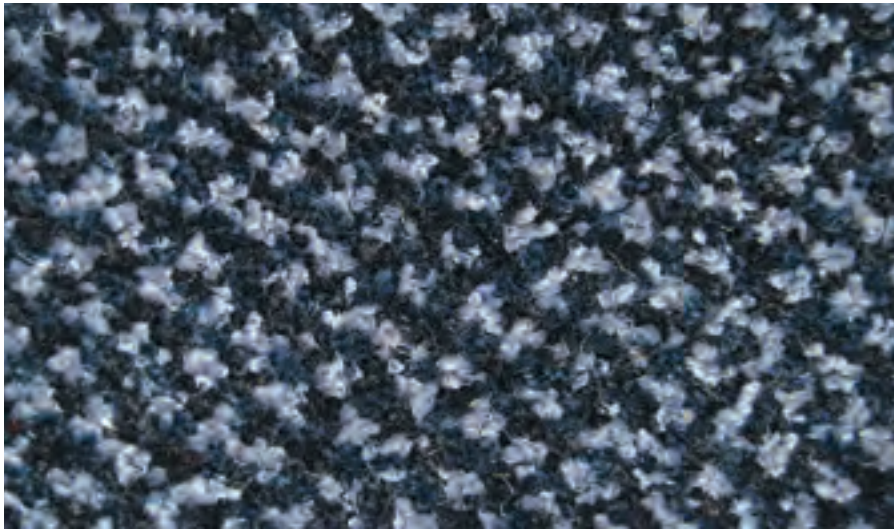
workspace entrance design

# PREMIER

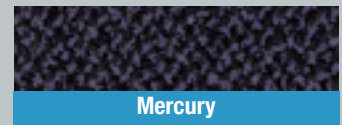


Images for illustrative purposes only - for a true likeness order a sample tile





High specification,  
secondary entrance  
matting



## Description

- High specification secondary entrance matting
- Made from 80% wool from renewable sources only
- Absorbs up to 4 times more moisture than man made fibres
- All products conform to BS8300
- Low LRV Values compared to aluminium, LVL and fibrebonded products. This ensures a positive point difference is easy to achieve for areas where partially sighted traffic will be important to consider.
- Equalities Act 2010 compliant
- Entrance matting resistant to point loading and scuffing from rubber wheels and walking aids

## Flame Properties:

Bfl-s1 (Tile only) (BS EN ISO 11925.2)  
(BS EN ISO 9239.1)

## Colours:

Colour Options Available 3

## Technical Data:

Style	Tufted Twist Pile
Fibre Construction	80% Wool / 20% Nylon + monofilament scraper
Tuft Gauge	1/8"
Pile Yarn Weight	1500 gsm
Pile Height	6mm
Pile Density	117,800 tufts per m2
Total Weight	Tile 5300 gsm / Sheet 2300 gsm
Total Thickness	Tile 12mm / Sheet 10mm
Backing Colback	Secondary Backing Unitary Bac. Tile Backing Bitumen
Roll Size	25.00m x 2.00m
Tile Size	50cm x 50cm (Tile)
Wear Classification	Heavy Contract
Electro-static	Less than 2Kv
Colour Fastness	
Colour Fastness (BS1006)	Light (BS1006:B02) 5 Wet Rubbing (BS1006:B01) 4 - 5 Dry Rubbing (BS1006:X12) 4 - 5 Wet Shampoo (BS1006:UK-TB) 4 - 5

# VISTA DUAL



Images for illustrative purposes only - for a true likeness order a sample tile

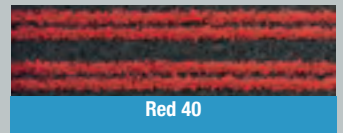




Tough entry level, secondary entrance matting



Blue 30



Red 40



Silver 70



Anthracite 50

## Description

Made from 100% solution dyed nylon designed with an alternate linear pattern comprising of scraper and moisture absorbing yarn, ideal for the removal of both dirt and moisture.

## Flame Properties:

Cfl,s1

## Colours:

Colour Options Available 4

## Technical Data:

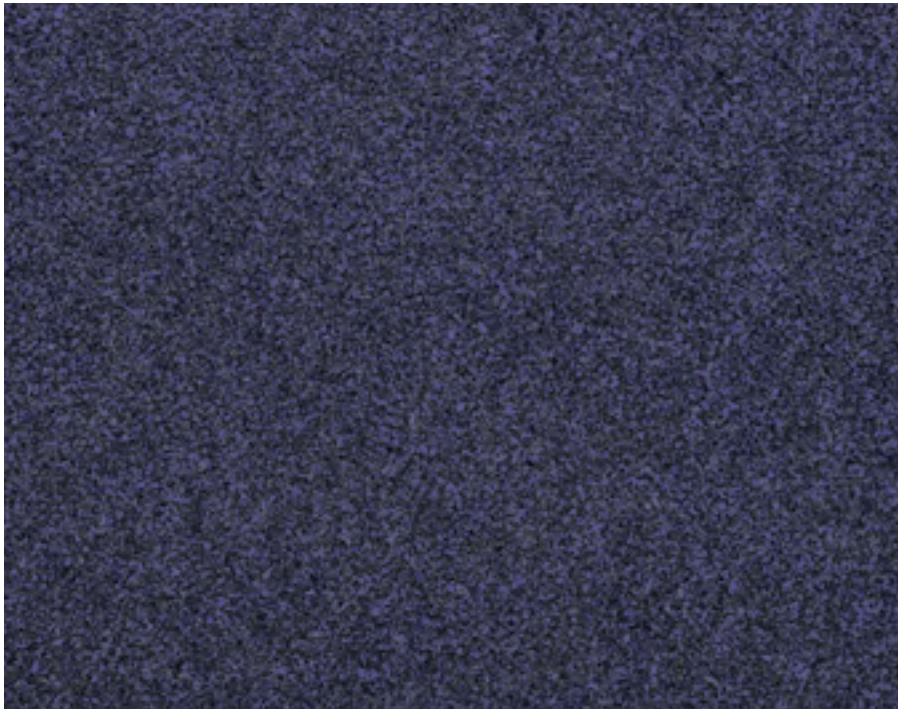
Manufacturing process	Tufted		ISO 2424
Gauge	5/32" Cutpile		
Pile yarn composition	100% PA6		ISO 2424
Primary backing	Non Woven		
Backing	PC		
Width	130 cm, 200 cm		
Pile weight	880 g/m <sup>2</sup>		
Total weight	3400 g/m <sup>2</sup>	+/- 10%	ISO 8543
Pile height	6.4 mm		ISO 1765
Total height	8,5 mm	+/- 10%	ISO 1765
Number of tufts	134000		
Overall use class	Commercial 32, Areas with medium use		EN 1307
Luxury class	LC3		EN 1307
Castor chair suitability	Yes, permanent use		EN 985
Stair suitability	Yes, permanent use		EN 1307
Colour fastness to light	≥ 5		ISO 105-B02
Colour fastness to rubbing, wet and dry	≥ 4		ISO 105-X12
Colour fastness to water	≥ 4		ISO 105-E01
Colour fastness to soiling	≥ 3,5		EN 1269
Electrostatic charging	< 2kV		ISO 6356
Slip resistance	> 0,3	Machine direction	EN 13893
	> 0,3	Crossdirection	EN 13893
Flammability	Cfl,s1		EN 13501-1
AbZ Nr.	Z-156.601-1165		



# WORKSPACE ENTRANCE



Images for illustrative purposes only - for a true likeness order a sample tile



Tough heavy contract,  
secondary entrance matting



Vulcan



Victor



Viscount



Vixen

## Description

- Tough heavy contract, secondary entrance matting
- All products conform to BS8300
- Low LRV Values compared to aluminium, LVL and fibrebonded products ensuring a positive point difference is easy to achieve for areas where partially sighted traffic will be important to consider.
- Equalities Act 2010 compliant
- Entrance matting resistant to point loading and scuffing from rubber wheels and walking aids

## Flame Properties:

Cfl-s1 for tiles

## Colours:

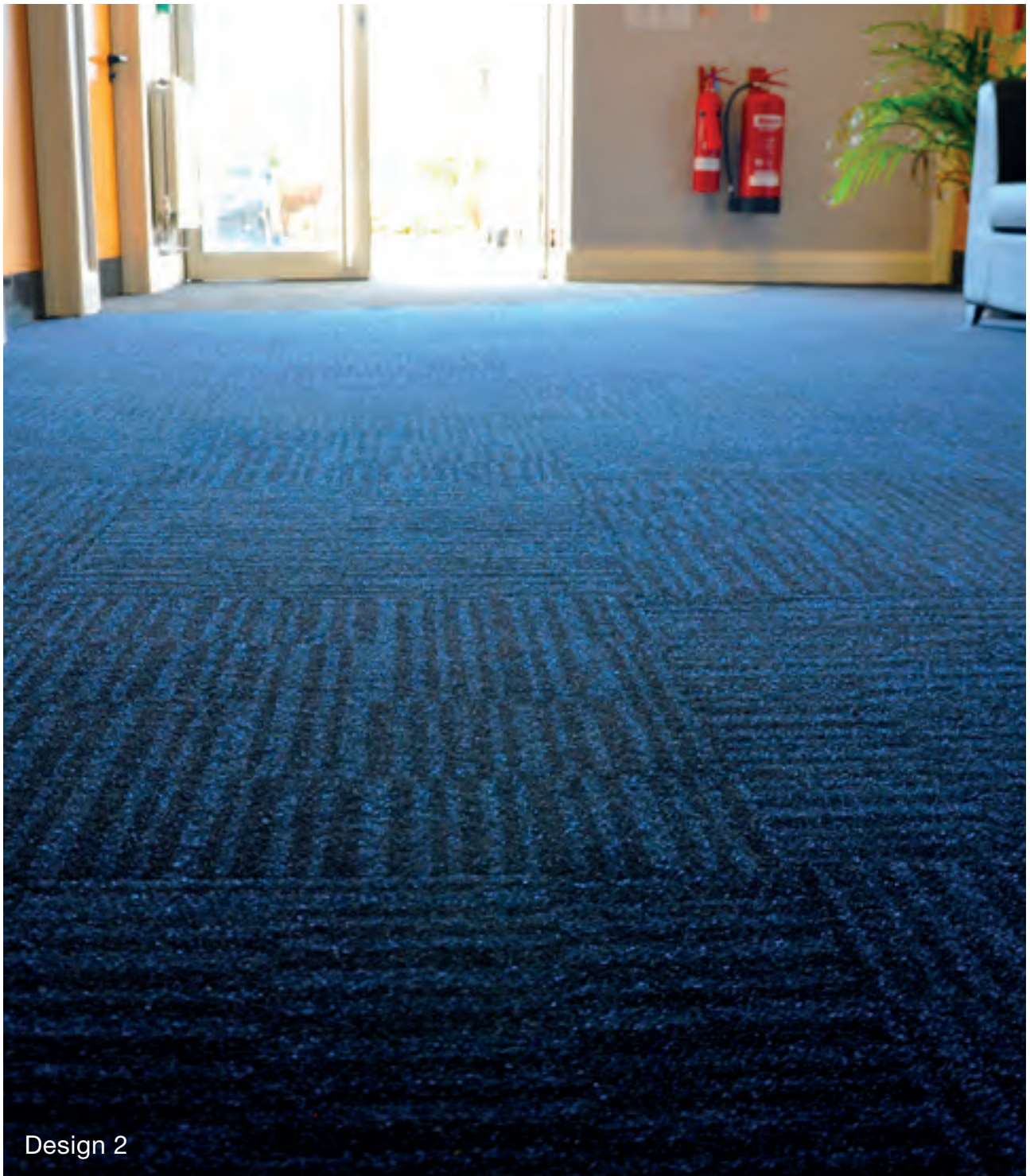
Colour Options Available 4

## Technical Data:

Style	Tufted Cut Pile with integral scraper system
Fibre Construction	100% solution dyed nylon
Tuft Gauge	1/10"
Pile Yarn Weight	1,000 gsm
Pile Height	5mm +/- 0.5mm
Pile Density	114,260 tufts per square metre
Total Weight	Tile 4,800 gsm / Sheet 1,800 gsm
Sheet Thickness	Tile 9mm / Sheet 8mm
Backing	Bitumen Compound / Eco-Bac / Unitary Bac
Dimensions	50cm x 50cm tile / 2m x 20m nominal
Wear Classification	Heavy Contract Class 33
Colour Fastness	To Water - 5 To Light - 5 To Rubbing - 4.5
Flammability	Cfl-s1
Warranty	10 Years



# WORKSPACE ENTRANCE DESIGN

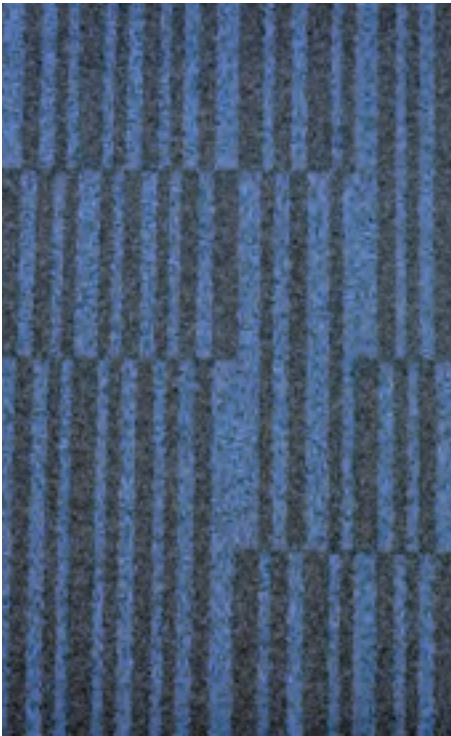


Design 2

Images for illustrative purposes only - for a true likeness order a sample tile

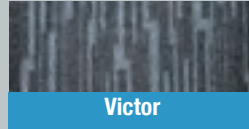


# 3 Designs - 4 Colourways



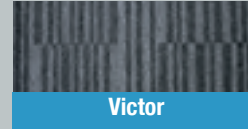
Tough heavy contract, secondary entrance matting

Design 1



Victor

Design 2



Victor

Design 3



Victor

Viscount



Viscount



Viscount



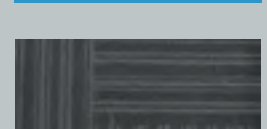
Vixen



Vixen



Vixen



Vulcan



Vulcan



Vulcan

## Description

- Tough heavy contract, secondary entrance matting
- All products conform to BS8300
- Low LRV Values compared to aluminium, LVL and fibrebonded products ensuring a positive point difference is easy to achieve for areas where partially sighted traffic will be important to consider.
- Equalities Act 2010 compliant
- Entrance matting resistant to point loading and scuffing from rubber wheels and walking aids

## Flame Properties:

Cfl-s1 for tiles

## Colours:

3 Designs - 4 Colourways

## Technical Data:

Style	Tufted Cut Pile with integral scraper system
Fibre Construction	100% solution dyed nylon
Tuft Gauge	1/10"
Pile Yarn Weight	1,000 gsm
Pile Height	5mm +/- 0.5mm
Pile Density	114,260 tufts per square metre
Total Weight	Tile 4,800 gsm / Sheet 1,800 gsm
Sheet Thickness	Tile 9mm / Sheet 8mm
Backing	Bitumen Compound / Eco-Bac / Unitary Bac
Dimensions	50cm x 50cm tile / 2m x 20m nominal
Wear Classification	Heavy Contract Class 33
Colour Fastness	To Water - 5 To Light - 5 To Rubbing - 4.5
Flammability	Cfl-s1
Warranty	10 Years



Design 1

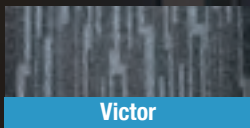




Design 1

Design 2

Design 3



Victor



Victor



Victor



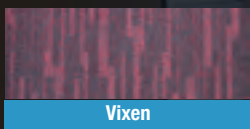
Viscount



Viscount



Viscount



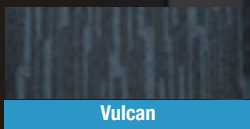
Vixen



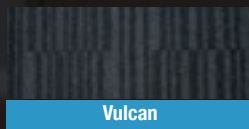
Vixen



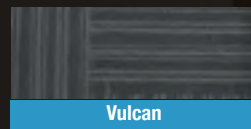
Vixen



Vulcan



Vulcan



Vulcan

Design 3







“Make a lasting impression with  
a bespoke branded **logo mat**”

mw print mats

coir logo

brush logo

coir

dda coir

**MW**

# print mats & logo matting

# MW PRINT MAT

## Description

- This truly high quality multi-functional Dust Control Mat not only cleans and dries shoe-soles preventing dirt and moisture being tracked into facilities. It also provides an excellent opportunity to address safety issues as most people primarily look to the floor.
- Superior colour fastness is ensured, in accordance with DIN54006. We work with 16 standard PMS colours, which allows any other colour to be matched. Printed Mats offers a state-of-the-art technology that even allows 3-dimensional effects, fine lines and colour shading, so each mat has a truly individual customised image.





## MW Print Mat

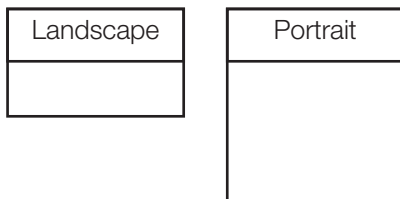
- Tufted cut loop carpet mat consisting of 100% non-crush polyamide 6.6 high twist yarn, approx 700gr/m2.
- Nitrile rubber backing, 1,5mm thick.
- Non slip-gripper backing.
- Enforced borders, do not curl in cold weather and will not tear.
- Machine washable at 50oC.
- Oil and microbe resistant.
- Excellent moisture absorption capacity: >4ltr/m2.
- Pile height 7mm.
- Overall thickness: 8,5mm.

## How to Order

1. **Title or name** Give any name relevant to the design.
2. **Send logo or image to sales@mat-works.co.uk**  
Acceptable formats are JPG, TIF, EPS, PCX, Adobe Illustrator, Certified PDF  
In case no logo is available, text is also possible. In such case, give text, preferred letter type and letter colour.
3. **Sizes:** Select required mat size.  
60cm, 75cm, 85,cm,115cm,150cm  
and 200cm including border  
Lengths up to 400cm  
Sizes are approximate, subject to a tolerance of about 3%.

### 4. Orientation:

Landscape or Portrait.



### 5. Background Colour

Recommended are dark colours.

### 6. Quantity

Indicate number of mats.  
More mats per design lowers the cost.



(Colours shown may deviate slightly from the original colours).

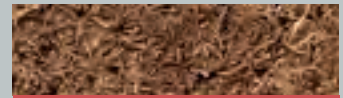
# COIR LOGO



Images for illustrative purposes only - for a true likeness order a sample tile



High specification,  
secondary entrance matting



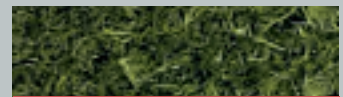
coir-natural



coir-black



coir-red



coir-green



coir-lightgrey



coir-tan



coir-brown

## Description

Coir is traditional and effective barrier matting, made with 100% natural fibres. Perfectly suitable for both commercial and domestic entrance areas. Coir matting will capture a large amount of moisture and provides excellent airflow for efficient vacuuming.

## Flame Properties:

BS 4790 (low radius of char)

## Colours:

Colour Options Available 7

## Maintenance:

Regular vacuuming with suction attachment. Occasionally reverse the matting.

## Installation:

Sub floors should be clean, dry and flat and prepared in accordance with BS5325. Entrance area sheet should be fully adhered.

## Tolerances:

The above information is given in good faith and all sizes and weights are subject to manufacturing tolerances.



## Technical Data:

Manufacturing process	Pile implant
Surface aspect	Cut pile
Pile material	100% coir - high twist yarns made from coconut husk fibre
Backing	PVC
Overall Thickness	Natural: 17mm, 14mm and 28mm
	Colours: 17mm
	1m and 2m
Roll Widths	12m - full cut length service available
Roll Lengths	2700 grams/m <sup>2</sup> (17mm quality)
Pile Weight	5700 grams/m <sup>2</sup> (17mm quality)
Total Weight	



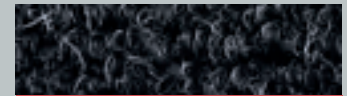
# BRUSH LOGO



Images for illustrative purposes only - for a true likeness order a sample tile



High specification,  
secondary entrance matting



Brush Rib Anthracite



Brush Rib Black



Brush Rib Blue



Brush Rib Brown



Brush Rib Green



Brush Rib Natural



Brush Rib Red

## Description

A high quality non-woven barrier matting suitable for commercial and domestic uses.

## Flame Properties:

EFL-S1

## Colours:

Colour Options Available 7

## Maintenance:

Regular vacuuming with suction attachment

## Installation:

Sub floors should be clean, dry and flat and prepared in accordance with BS5325. Entrance area sheet should be fully adhered.

## Tolerances:

The above information is given in good faith and all sizes and weights are subject to manufacturing tolerances.

## Technical Data:

Manufacturing process	Non-woven needled
Surface aspect	Looped fibres ribbed
Pile material	100% synthetic stain resistant fibre
Backing	Water resistant SBR latex
Overall Thickness	13mm
Roll Widths	2m
Roll Lengths	25m - full cut length service available
Pile Weight	1700 grams/m <sup>2</sup>
Total Weight	2700 grams/m <sup>2</sup>



# COIR



Images for illustrative purposes only - for a true likeness order a sample tile





High specification,  
secondary entrance  
matting



## Description

Available in 13 to 23mm for ease of use on variable surfaces.

Our world renowned coir product is made from machine spun coir yarns, tightly woven to provide a hard wearing value product.

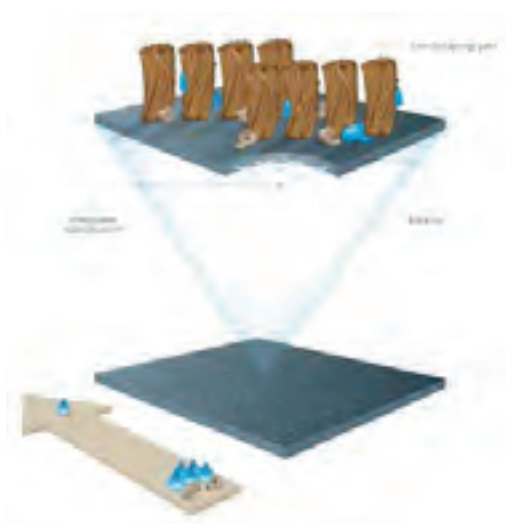
A tough product designed for moderate commercial use, Coir can be cut into any shape or design to create tailored entrance matting solutions.

## Flame Properties:

Ffl

## Colours:

1 colour way natural only



## Technical Data:

Pile material	100% Machine spun coir yarn
Backing	PVC with integrated stability scrim
Yarn construction	Velour
Pattern	Uni
Colours	1
Pile weight ISO 8543	13 mm: $\pm 1.85 \text{ kg m}^2$ 17 mm: $\pm 2.35 \text{ kg m}^2$ 20 mm: $\pm 2.70 \text{ kg m}^2$ 23 mm: $\pm 3.10 \text{ kg m}^2$
Total weight ISO 8543	13 mm: $\pm 4.75 \text{ kg m}^2$ 17 mm: $\pm 5.25 \text{ kg m}^2$ 20 mm: $\pm 5.60 \text{ kg m}^2$ 23 mm: $\pm 6.00 \text{ kg m}^2$
Pile height ISO 1766	10, 14, 17 & 20 mm
Total height ISO 1765	13, 17, 20 & 23 mm
Number of stitches ISO 1763	$\pm 27.000 / \text{m}^2$
Comfort EN 1307	LC5
Flammability Euroclass EN 13501	Ffl
Slip Resistance EN 13893	DS
Declaration of Performance	Available
Sizes rolls*	100 cm & 200 cm
Roll length	$\pm 12,5 \text{ m}$

# COIR BLACK



Images for illustrative purposes only - for a true likeness order a sample tile



High specification,  
secondary entrance  
matting



coir-black

## Description

Available in 13 to 23mm for ease of use on variable surfaces.

Our world renowned coir product is made from machine spun coir yarns, tightly woven to provide a hard wearing value product.

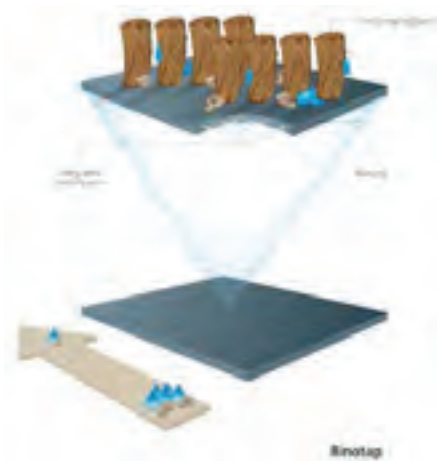
A tough product designed for moderate commercial use, Coir can be cut into any shape or design to create tailored entrance matting solutions.

## Flame Properties:

Ffl

## Colours:

1 colour way black only



## Technical Data:

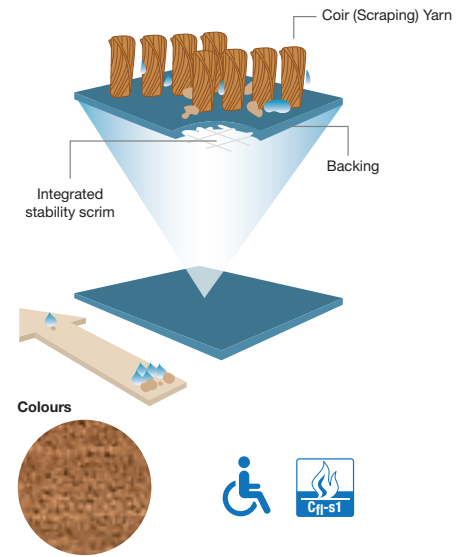
Pile material	100% Machine spun coir yarn
Backing	PVC with integrated stability scrim
Yarn construction	Velour
Pattern	Natural/Colour: Uni, Design: Linear
Colours	1
Pile weight ISO 8543	13 mm: ± 2,35 kg m <sup>2</sup> 17 mm: ± 2,65 kg m <sup>2</sup> 20 mm: ± 3,15 kg m <sup>2</sup> 23 mm: ± 3,60 kg m <sup>2</sup> 28 mm: ± 4,35 kg m <sup>2</sup>
Total weight ISO 8543	13 mm: ± 5,35 kg m <sup>2</sup> 17 mm: ± 5,65 kg m <sup>2</sup> 20 mm: ± 6,15 kg m <sup>2</sup> 23 mm: ± 6,60 kg m <sup>2</sup> 28 mm: ± 7,65 kg m <sup>2</sup>
Pile height ISO 1766	10, 14, 17, 20 & 25 mm 14 & 20 mm Design: 14mm
Total height ISO 1765	13, 17, 20, 23 & 28 mm 17 & 23 mm Design: 17 mm
Number of stitches ISO 1763	± 38.000 /m <sup>2</sup>
Use classification EN 1307	31, Colour: NPD, Design: NPD
Wearing class EN 1963	32
Comfort EN 1307	LC5
Light fastness ISO 105 B02	> 6
Water fastness ISO 105 B01	3 - 4
Rubbing fastness ISO 105 X12	3 - 4
Salt water ISO 105 E02	3 - 4
Shampoo BS 1006	3 - 4
Organic solvents ISO 105 X05	3 - 4
Absorption capacity TNO W6034	17 mm: ± 7,1 l/m <sup>2</sup>
Flammability Euroclass EN 13501	Ffl
Slip Resistance EN 13893	DS
Static charge ISO 6356	2,0 kV
Declaration of Performance	Available
Sizes rolls*	100 cm & 200 cm
Roll length	± 12,5 m - 28 mm ± 10 m





Images for illustrative purposes only - for a true likeness order a sample tile





## Description

Our Mat.Works DDA Coir is hard-wearing and satisfies all official commercial requirements, which is unique for a coir product. It complies with the rigorous European Fire Safety requirements (Cfl-S1) and has a wear classification of Class 32 (BS EN 1307)

Coir is a natural material which looks great, offers excellent durability and also absorbs a great deal of dirt and moisture, which means you will save on cleaning costs.

The yarn is mechanically spun to ensure a uniform and regular pattern with minimal fibre loss.

This product can absorb up to eight litres of water per square metre, producing unrivalled performance in this product sector.

This product is constructed using an unique glass scrim which means that this product is hardly affected at all by stretching and is extremely stable. That means it is also ideal for wheelchair users and presents no problems at all for people on crutches or wearing high heeled shoes.

## Technical Data:

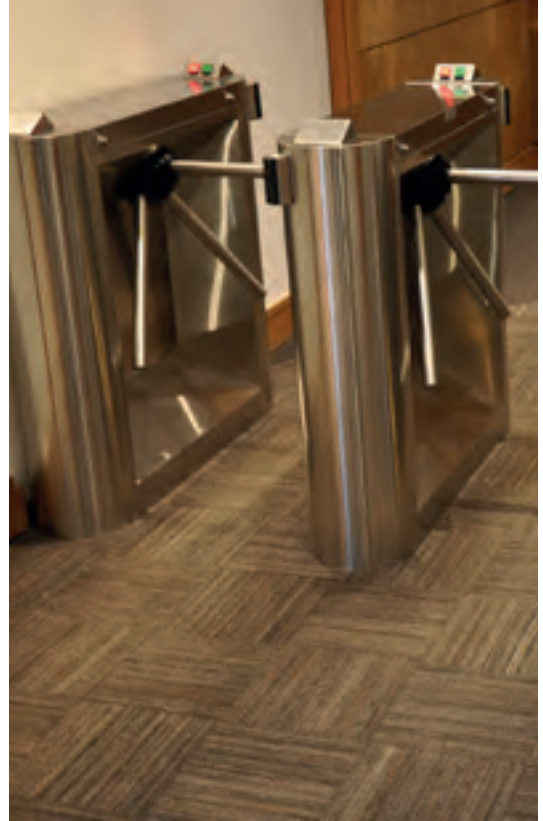
Pile material	100% Machine spun coir yarn
Backing	PVC with integrated stability scrim
Yarn Construction	Velour
Pattern	Uni
Colours	1
Pile weight ISO 8543	17mm: ± 3.50kg m <sup>2</sup> 20mm: ± 4.10kg m <sup>2</sup> 23mm: ± 4.75kg m <sup>2</sup>
Total weight ISO 8543	17mm: ± 6.85kg m <sup>2</sup> 20mm: ± 7.45kg m <sup>2</sup> 23mm: ± 8.10kg m <sup>2</sup>
Pile height ISO 1766	14, 17 & 20mm
Total height ISO 1765	17, 20 & 23mm
Number of stitches ISO 1763	± 41.800/m <sup>2</sup>
Use classification EN 1963	32
Wearing class EN 1963	32
Comfort EN 1307	LC5
Light fastness ISO 105 B02	> 6
Water fastness ISO 105 B01	3-4
Rubbing fastness ISO 105 X12	3-4
Slat water ISO 105 E02	3-4
Shampoo BS 1006	3-4
Organic solvents ISO 105 X05	3-4
Absorption capacity TNO W6034	17mm: ± 8,4 l/m <sup>2</sup>
Flammability Euroclass EN 13501	Cfl/s1
Slip Resistance EN 13893	DS
Static charge ISO 6356	2,0 kV
Declaration of Performance	Available
Sizes rolls*	100cm & 200cm
Roll length	± 10m

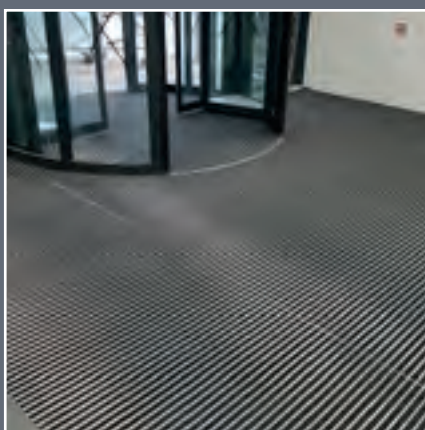
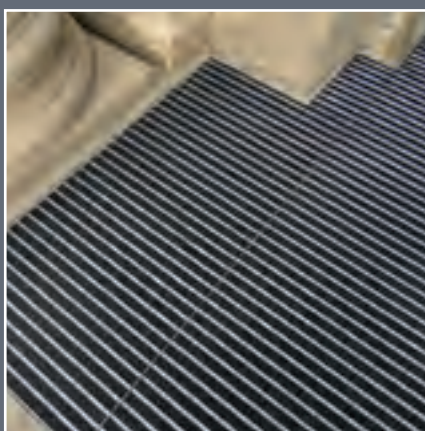




Tyre Tile - UKAR Asset Resolution specialist







# our projects

Edge Hill University

Westgate Hale

Astra Zeneca

Lancaster University

Loughborough University

Blackburn Mall

Wolverhampton University

Lewis Building, Liverpool

Canine Partners

DLA Piper

Rotherham Metropolitan Borough Council

Coventry University

Medical Protection Services

UKAR

St Mary's Church, Southport

Gabbittas Building

University of West of England



# cleaning guide

**Rollable Primary Matting Systems** - Smartscape and Frameworks

**Daily** - Vacuum clean

**Weekly** - Removal of grit, etc. and vacuum clean. Removal of chewing gum

**Monthly** - Removal of large grit, etc. and vacuum clean. Cleaning of matwell: - roll up mat and extract dirt / grit from under the mat. Check retainer screws at all 4 corners of mat and replace mat after cleaning making sure retainer screws are secure.

**Periodically** - Removal of large grit, etc.+ vacuum clean. Cleaning of matwell by roll up the mat and extract dirt grid from under the mat. Check retainer screws and replace mat after cleaning making sure retainer screws are secure. Accumulating dirt underneath the mats may undermine the structure of the mat.

Cleaning frequency is subject to amount of traffic, surroundings and weather conditions.

Modular Primary Matting Systems

**Daily** - Vacuum clean

**Weekly** - Removal of grit, etc. vacuum clean. Removal of chewing gum\*

**Monthly** - Remove large grit from the mat well by vacuum cleaning. Thoroughly clean mat well: - Take modules up and extract dirt / grit from under the mat. Replace modules in exact order they came out.

**Periodically** - Removal of large grit, etc. + vacuum clean.

**Cleaning of matwell:** - Take up modules extract dirt / grit from under the mat. Check sub floor is sound and replace modules in exact place where they were found. We also recommend that a periodic deep clean using hot water extraction is used to remove deep set dirt within the mat. (Specialist cleaning firms can be recommended just call our sales office on 08456010431 for more information).

Cleaning frequency is subject to amount of traffic, surroundings and weather conditions.

Gridmaster Matting, if made in a square or rectangular shape can be reversed from time to time this will double the life expectancy of the product.

\*NB:- removal of chewing gum is best using a proprietary gum removal gel such as that from fleetlight tel:- 02084667848.

**Maintenance Specification for Mat.Works Entrance Carpets and Carpet Tiles** - To maximise the entrance carpet's aesthetic appeal, performance and life expectancy, it is imperative to ensure at the specification stage that:

1. Carpets will be protected from other site activities during installation and thereafter.
2. Clients understand the enclosed information and that they accept responsibility for correct carpet care. (Mat.Works will provide a copy of the Cleaning and Maintenance guide to the end-users address when requested.)

**General Cleaning** - Daily vacuuming with a rotary brush vacuum cleaner, preferably with an adjustable head, is recommended. It is essential to remove all loose soil daily because if left to build up, the particles of dirt are much harder to remove and are more damaging to the yarn structure, thereby decreasing the life of the carpet.

Entrance Areas are prone to higher traffic levels and higher levels of dirt and moisture. This means that the maintenance program for entrance matting should be more frequent than for general carpeting areas, a ratio of 2 entrance cleans to 1 carpet clean is a general good guide for preventative periodical maintenance.

Depending on the level of trafficking, the carpet should be periodically deep cleaned using high performance hot water extraction equipment. In certain circumstances, for instance excessively stained carpet the cleaning professional may consider a combination between rotary brush and extraction equipment to give improved results. Rotary brush cleaning by itself is not recommended.

A reputable contract cleaner should be used, preferably NCCA registered (for NCCA details telephone 0116 271 9550). It is important that the carpet is deep cleaned at least once a year.

**Stain Removal** - It is essential to deal with spillages immediately and any subsequent stains as appropriate. In the event of a spillage, immediately blot with a clean absorbent cloth until there is no further transfer from the carpet to the cloth. If any further stain remains or has otherwise been allowed to dry, the method will vary accordingly.

It is recognised that particularly for contract situations, if stains are not dealt with immediately, cleaning staff may not be in a position to identify the type of stain. A good quality, multi-purpose stain remover is therefore very useful, although it must be understood that this will not successfully

tackle all types of stains, and wherever possible the chart recommendations should be strictly adhered to (see right). Also any stains left over a period of time become increasingly more difficult to remove and may require several treatments.

In all cases after stain removal the carpet should be allowed to dry completely and then cleaned with a rotary brush vacuum cleaner.

Solvent cleaning of bitumen backed tiles should preferably be avoided. Where this is not possible, extra caution should be taken and only very light surface cleaning should take place.

**Special Cases** -

**Cigarette burns** - it is recommended that these are punched out and replaced by a professional carpet fitter.

**Major spillages** - seek professional advice from a member of the NCCA.

If any of the treatment lists are not successful, seek professional help. The methods are based upon experience and are recommended in good faith. However, we cannot accept responsibility for their use in any specific case.



Alcoholic beverages A  
 Baby or animal stains  
 Blood (wet)  
 Coffee, tea chocolate  
 Minerals and Fruit juices  
 Water based paint  
 Food  
 Fountain pen ink  
 Vomit

Shoe polish B  
 A  
 Oil based paint or varnish  
 Butter and other greases  
 Cooking oils and other oils  
 Ointment  
 Metal polish  
 Tar  
 Cream, ice-cream and milk  
 All inks except fountain pen ink B  
 C  
 Dried blood D  
 Chewing gum E  
 Blu-tack  
 Plasticine

A  
 A liquid detergent such as Granwax spot/stain remover, in accordance with manufacturers instructions.  
 Granwax tel no: 01773 541177

B  
 A dry solvent spotter such as Prochem solvall.

C  
 Methylated spirits  
 Method: Moisten a cloth with the appropriate solvent and dab onto the stain. Carry on using alternate moist and dry cloths until no further stain transfer. Finally, cover the damp area with a thick wad of dry cloths, cover with something heavy and leave for several hours

D  
 A paste made with biological washing powder mixed to use as little water as possible.  
 Method: Moisten stain with warm water and cover with the paste. Keep moist for approximately 2 hours. Sponge with clean warm water and blot with an absorbent cloth.

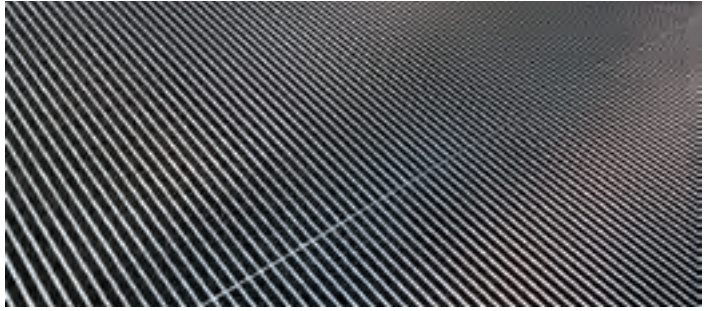
E  
 Scrape off the excess with a blunt edged knife. Use proprietary chewing gum remover. Contact Granwax for advice.  
 Granwax tel no. 01773 541177





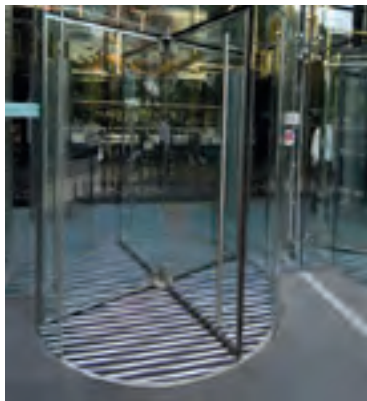
30m2 Frameworks 17C with MW Rib Anthracite Inserts - Matworks Wolverhampton University







Frameworks 15mm - M&S





# accessories

## Description:

Mat.Works frames are available in aluminum and brass, and are designed to anchor into sand and cement screeds for secure site installation. All frames are custom built to fit specific site requirements, with curved shapes available to special order.

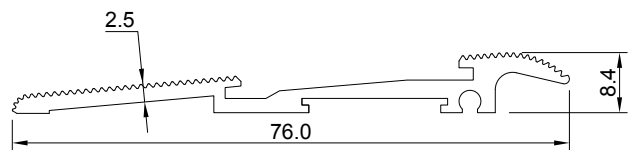
The recommended Mat.Works depth is 19mm for all products except 12mm. For these products we recommend a matwell with 14mm depth.

Mat.Works frames are supplied in kit form for ease of transport, storage and on-site assembly.

## Ramped frames & surface mounted installations:

Internal and external ramp frames are supplied mitred and drilled. The surface is ribbed for enhanced grip.

(ARF 70 must be used with Grid)

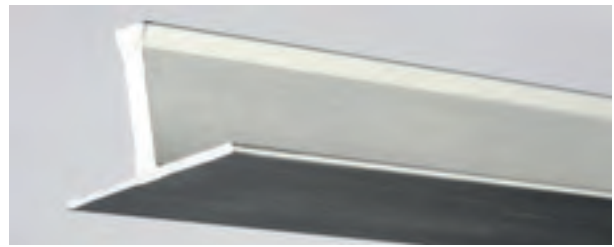


## T-Bars

Mat.Works T-Bars provide separation between modules to facilitate easy removal for cleaning and reversibility.

Tuftiguard T Bars are available in aluminum, brass or PVC and in all PVC colours except Doubloon. Grid T-Bars are available in aluminium. Please note that T-Bars are automatically included in each order.

17.5mm height must be used with Grid.

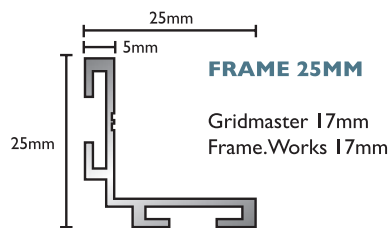


T- Bar profiles for all mats available

## Framing Options

Mat.Works has a number of framing options to choose from depending on the type of matting selected. Select the type of frame relevant to the mats as listed below the frame.

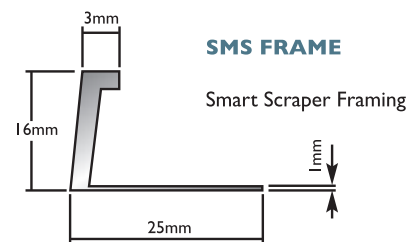
When specifying use the product code listed by the diagram.



**FRAME 25MM**

Gridmaster 17mm  
Frame.Works 17mm

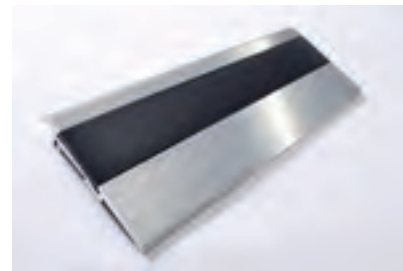
10-25mm Available



**SMS FRAME**

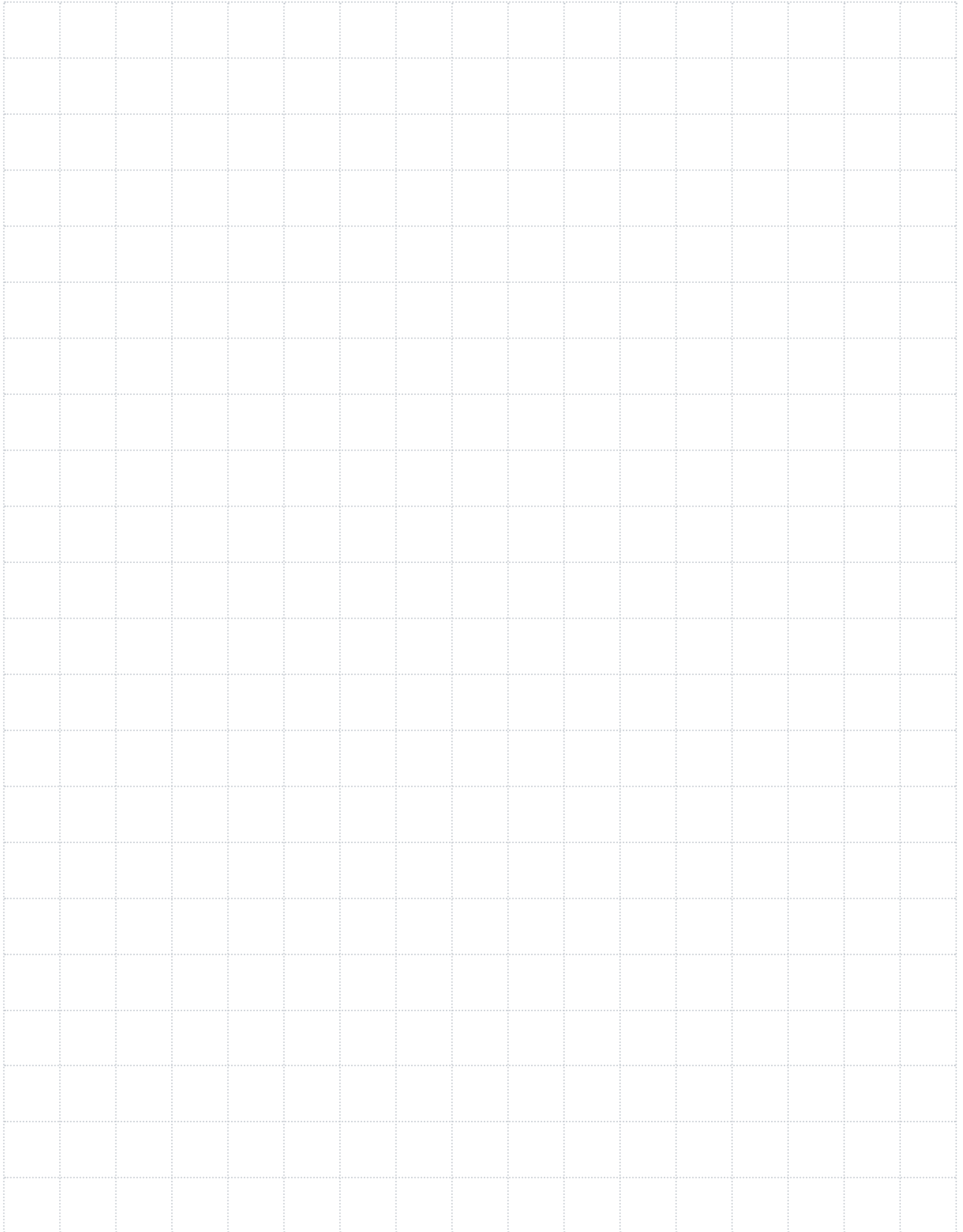
Smart Scraper Framing

## Smartscraper clip

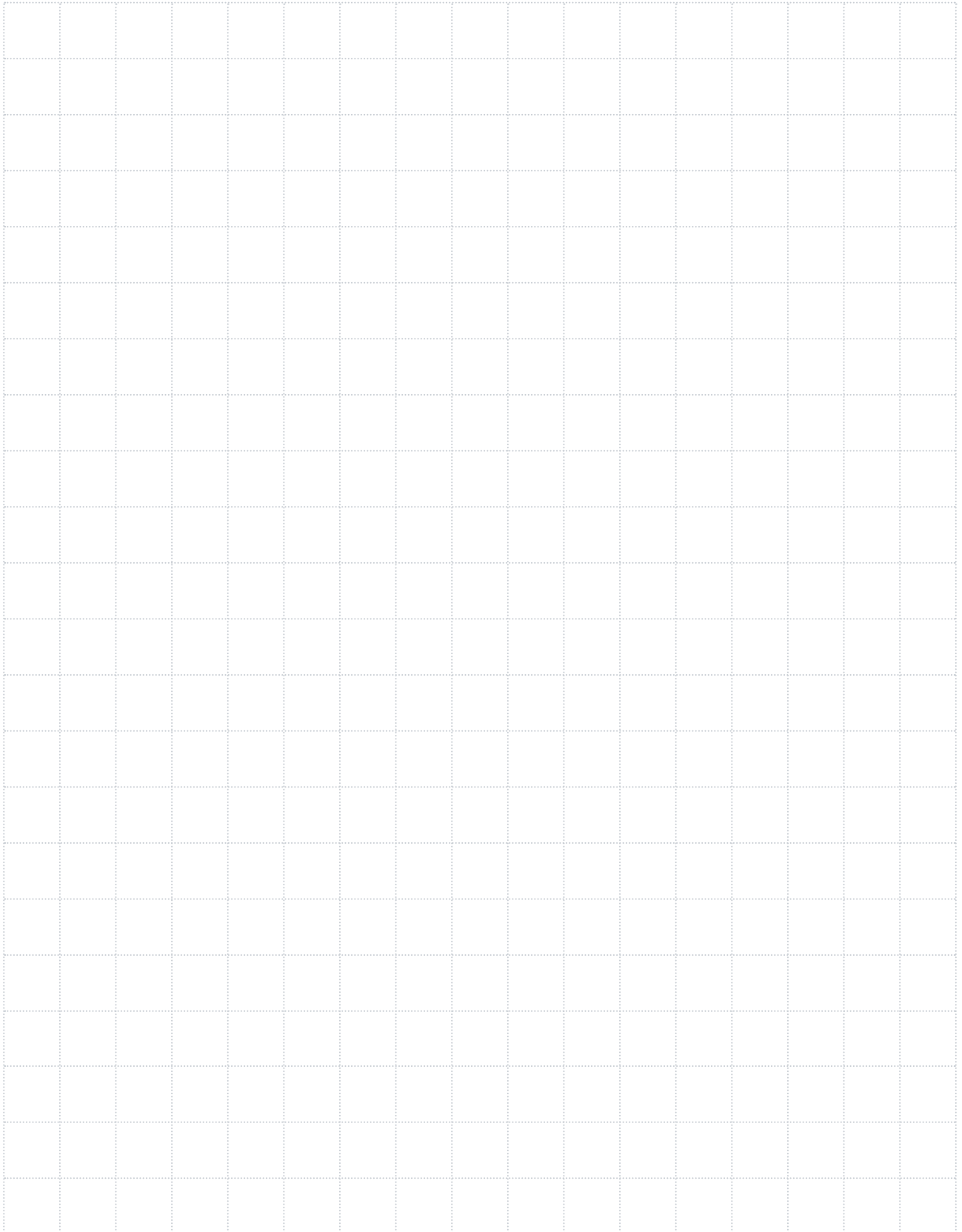


MW Ramp System

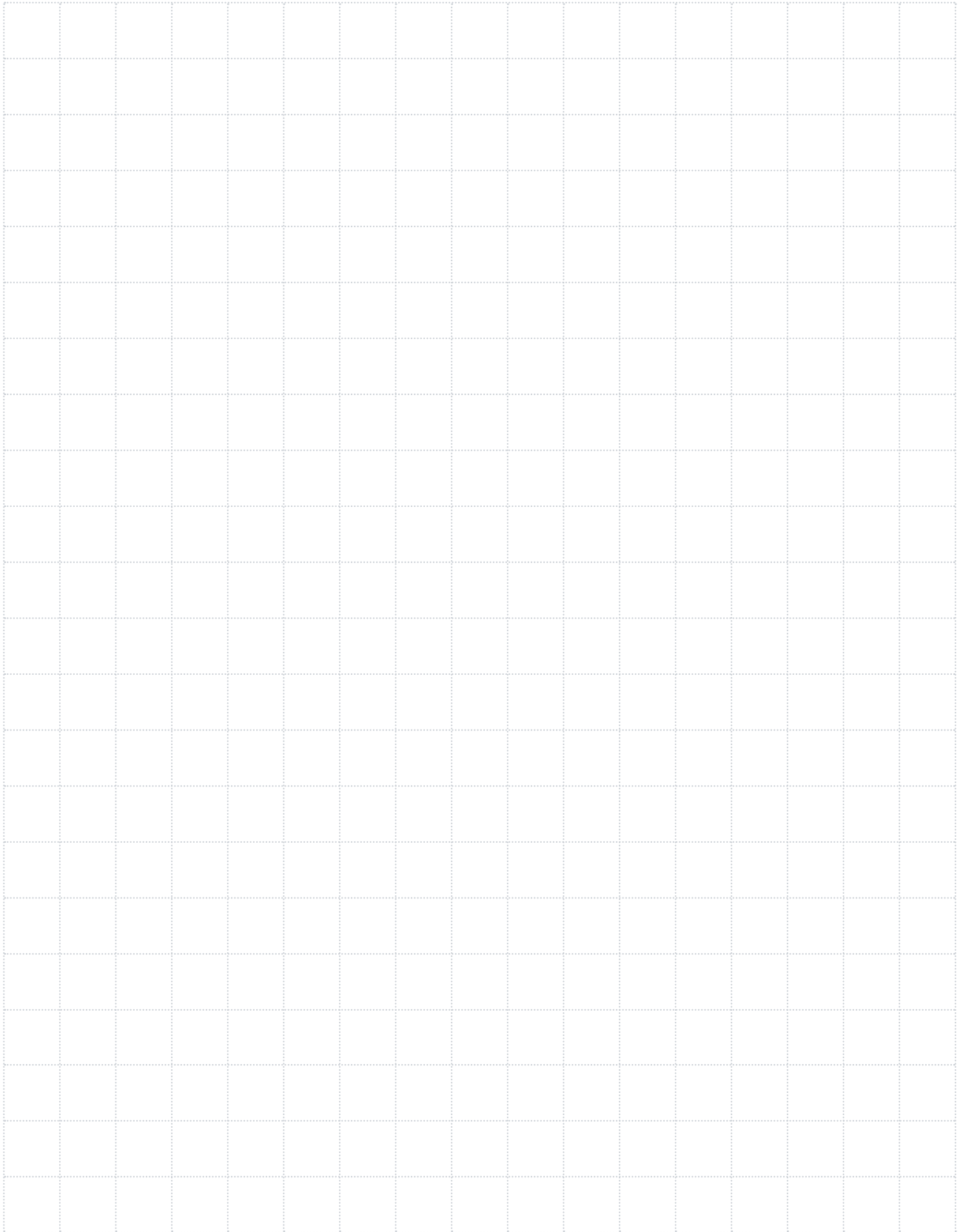
# NOTES



# NOTES







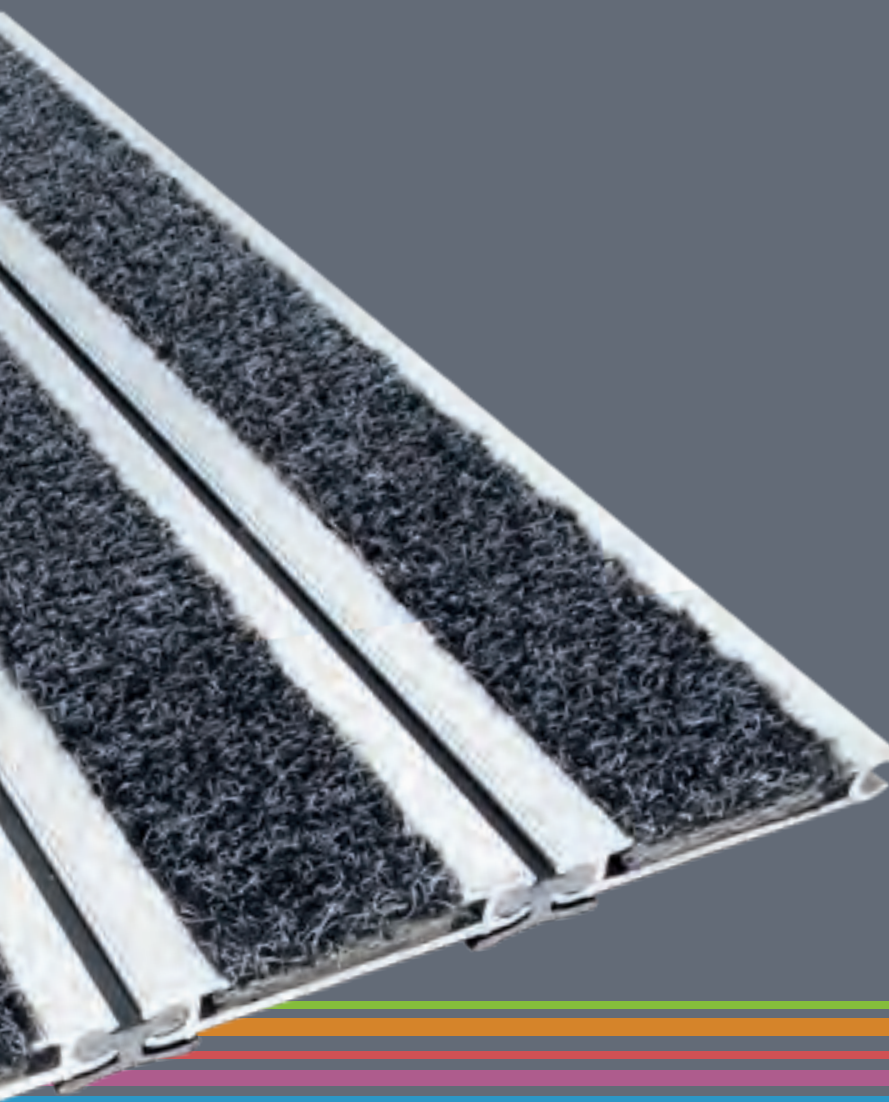


**mat.works**  
Entrance Solutions

ME2010716

Mat.Works is a Division of National Floorcoverings Ltd,  
the UK's leading manufacturer of commercial floor coverings.

• Commercial Entrance Matting • Health & Safety Specialists • ISO 14001 Accredited • ISO 9001:2000 Accredited • Disability Act Specialist



part of the group

**paragon**  
CARPET TILES



ENTRANCE SOLUTIONS 2017

Farfield Park, Manvers, Wath-upon-Deerne, Rotherham, S63 5DB.

T. +44 (0) 1709 763 839  
F. +44 (0) 1709 763 813  
E. [sales@mat-works.co.uk](mailto:sales@mat-works.co.uk)  
W. [www.mat-works.co.uk](http://www.mat-works.co.uk)

Marketing/Samples Department:  
Samples Department  
T: +44 (0) 1709 763 805