

INTELLICONE® SMART CLOSURE

Highway Resource Solutions' **Smart Closure** enables remote road closure management. This allows traffic management operatives to be removed from potential areas of danger and confrontation whilst also enabling the use of Incursion Warning Systems.

Smart Closure consists of Intellicone® Unipart Dorman Static lamps OR Dual Sentry Laser Beams and a Closure Beacon that is positioned securely underneath for example a traffic cone.

Motion sensitive Intellicone® lamps monitor the integrity of the road closure in real-time and instantly transmit a wireless alarm signal if anyone attempts to access the closure. The Closure Beacon relays these alert signals as well as road closure deployment details to relevant personnel via automated phone calls, text messages or email alerts. Each message contains as a minimum the date, time, GPS location, road name and nearest marker post location (if available). The Closure Beacon messages are fully customisable and can be used to automate road works reporting, reduce cyclic maintenance requirements and provide real time road works information to the general public thereby improving their travelling experience (such as closure points directly mapped onto Google or other third party mapping systems).

With Smart Closure in place, Intellicone® Incursion Warning Systems can be used to warn the workforce of an errant or emergency vehicle incursion. See Safelane Flyers for more information

USE ROBUST TECHNOLOGY TO MAKE EXISTING EQUIPMENT SMART



www.highwayresource.com

0800 206 13 19

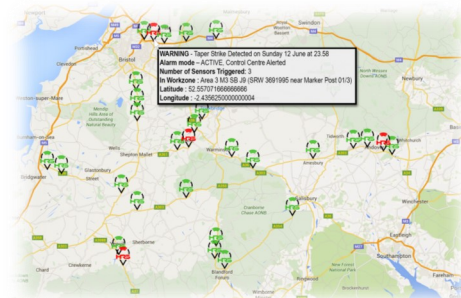
WHAT?

- **REMOTE CLOSURE MANAGEMENT**
- **REAL TIME DEPLOYMENT TIMING & LOCATION MAPPING**
- **INCURSION ALERTS**



WHY?

- **REMOVE TRAFFIC MANAGEMENT OPERATIVES FROM POINTS OF CONFRONTATION**
- **OPTIMISE CLOSURE RESOURCE MANAGEMENT & DETER INCURSIONS**
- **REAL TIME MAPPING IMPROVES LIVE INFORMATION ON ROADWORKS/INCIDENTS**
- **ENABLES INCURSION WARNING SYSTEMS**



Follow us on



PACKAGES

	Standard	Enterprise
Static Cone Lamps A pack of 10 Intellicone® Dorman ConeLITEs*	✓	✓
Smart Closure Beacon Closure Beacon including 4 x 6V 50Ah batteries	✓	✓
Closure Breach Alert Automated closure breach alert phone call & email notifying of event, location	✓	✓
Web Portal Login & Mapping Real-time mapping of closure deployments including on & off time, breaches, severity, working window etc		✓
Reporting Online reporting tool to generate utilization, incident and exception reports		✓
Maintenance Package Includes all batteries required for Taper Beacon operation (4 per month) as well as full servicing of Taper Beacon		✓
Training Free online training and deployment resources	✓	✓
Insurance (Closure Beacon) Includes insurance with £250 excess (terms apply *)	✓	✓

*contact us for details

OPTIONAL EXTRAS

	Standard	Enterprise
Safelane Incursion Warning System (Portable Site Alarms) To alert the workforce in case of a taper strike or incursion in their work area	Optional	Optional
Dual Sentry Beam Portable Laser Beam system to be used in conjunction or as replacement of Intellicone® Dorman Static Lamps to detect closure breach	Optional	Optional



Intellicone® Proved a great deterrent to people attempting to enter the closure (Kier Highways)



www.highwayresource.com
0800 206 13 19