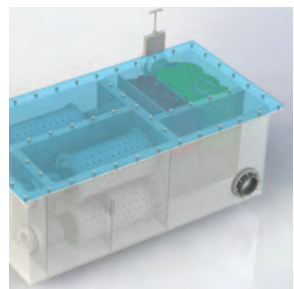
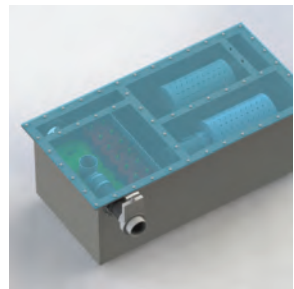


WATER REMEDIATION CHAMBER

Preventing pollution from exiting your site.

- Mitigates the need for vacuum tankering
- Processes surface water, whilst removing contaminants
- Reduces hydrocarbon pollution to non-detect levels
- No electricity required
- Quick installation for immediate use
- Specifically developed to filter out hydrocarbons and creosote
- Built to Class 1 full retention oil water separator PPG3 guidelines
- Flow rates up to 160 L/min or prescribed per application
- Smart polymer media filters used to target and remove contaminants
- Hydrocarbon retention up to 56 litres
- Available in three chamber sizes (configured to your specification)



FOR REMOVING HYDROCARBONS AND CREOSOTE CONTAMINANTS FROM SECONDARY CONTAINMENT SYSTEMS

HOW IT WORKS

The Green Rhino® Water Remediation Chamber is for processing surface water. The system can be installed at sites that potentially pose the risk of discharging hydrocarbon contaminated water into the environment, such as hydrocarbons from depots, utility bunds or creosote from utility poles and sleeper storage facilities.

The system utilises a number of proprietary filters for removing polluting compounds found in EU specification creosote, these contaminants include hydrocarbons, phenols and cresols.

The chamber allows surface water to be processed at up to 160 L/min and retains up to 56 litre of hydrocarbon while removing contaminants to acceptable Environmental Agency levels prior to discharge. The system can be used to replace or to complement oil water separation systems where it is essential to prevent pollutants from entering the environment.

The system is a sealed unit that can be used in high risk flood areas and can be either installed at new or retrofitted to existing sites.

The system uses an integral hydrocarbon and sediment filter which discharge water to ≤0.1 ppm oil concentration.

Available in three standard sizes depending on your site specification and requirements.

SPECIFICATION:

CODE	PRODUCT	PRODUCT SIZE	FLOW RATE DATA	ABSORBENCY /CAPACITY
GRR 92 10 04 WRC	Water Remediation Chamber - 4 Filter (Complete excluding filters)	1670cm x 860cm x 605cm	Up to 160 L/min	Up to 56 L. Oil
GRR 92 10 02 WRC	Water Remediation Chamber - 2 Filter (Complete Excluding Filter)	1670cm x 860cm x 308cm	Up to 160 L/min	Up to 28 L. Oil
GRR 92 20 02 WRC	Water Remediation Chamber - 1 Filter* (Complete Excluding Filter)	409cm x 554cm x 115cm	80 L/min	14 L. Oil (N/A for Creosote)

* Filters sold separately. Call for details.