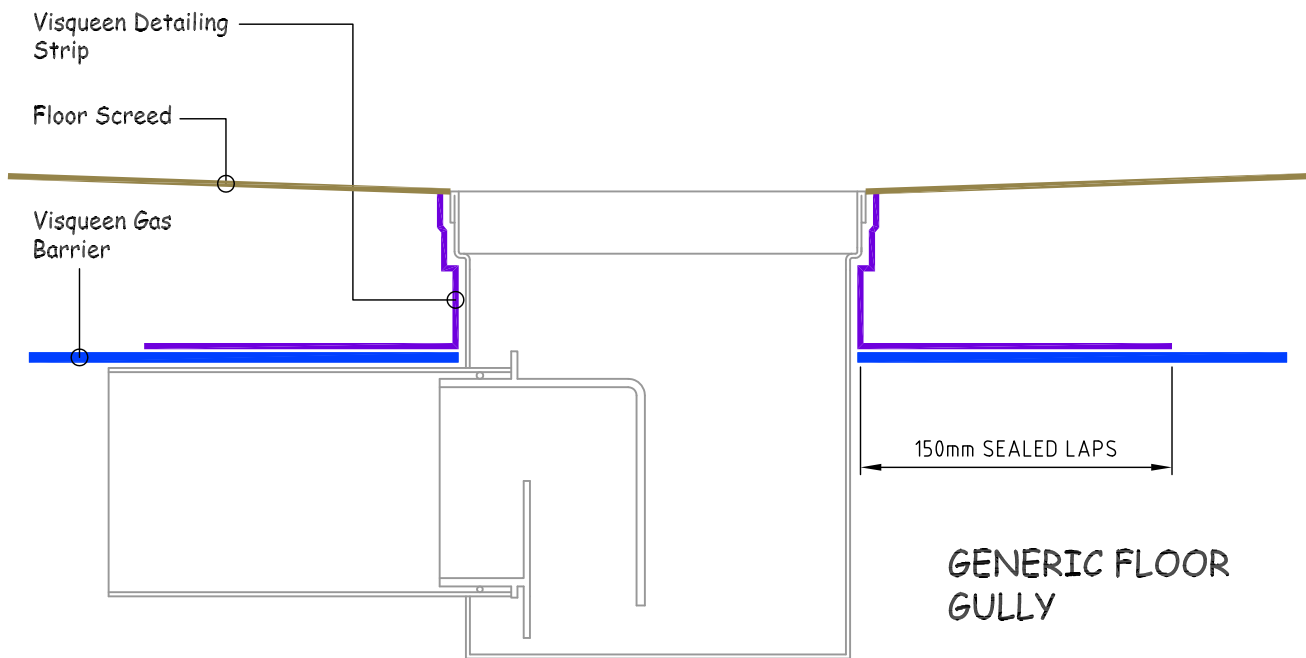
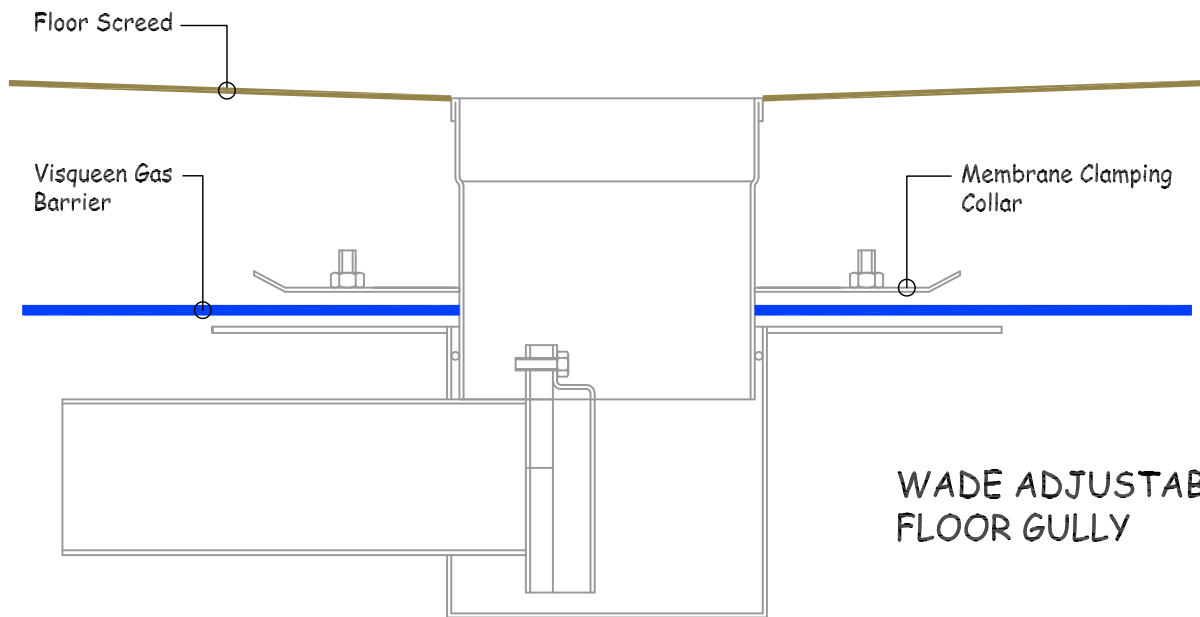


Site construction sequencing should be assessed before the appropriate Visqueen Standard Detail is selected & approved by the Designer

Detail Issued For Guidance Only,  
Designer's Approval Required

The design of a Sub-floor Ventilation Layer should be considered to dilute & disperse ground gases



NB: DO NOT SCALE - USE FIGURED DIMENSIONS ONLY.



Visqueen Building Products  
 Contact Technical Support :  
 t : 0333 202 6800  
 f : 0333 202 6886  
 e : enquiries@visqueenbuilding.co.uk  
 www.visqueenbuilding.co.uk

Project: Standard Detail : Typical Internal Floor Gully Details.

Drawing No.- GB-21.

Date.- 11/11.

Scale.- NTS.

© COPYRIGHT RESERVED.