

**DIAMONDMODULE**  
UNIVERSAL UNIT SYSTEM



**HOUSES**

**DIAMOND**MODULE









# DIAMOND MODULE

## **innovative technological solutions based on the modular system**

Our methodology is completely different from the conventional construction methods. A house erected and ready to move-in within one day? Of course. We can do it! We are specialists in this field.

We are the company that focuses on innovative solutions and the latest technologies, which make our products highly energy efficient and environment-friendly. In our offer you can find houses, hotels, office buildings, nursery schools, health care facilities and other mixed-use buildings.

Under the same roof we have the design team, the research and development section, production and assembly lines. This allows us to control the entire production process from the first idea to the product completion.

We are providing the turn-key solution perfected to the smallest detail.



## modern technologies

**The high energy efficiency** of our buildings means that we greatly reduce the amount of energy needed for heating, cooling, ventilation and air conditioning. This is achieved by the selection of modern materials and innovative solutions.

**Air conditioning and heat recovery** are necessary elements in a modern buildings. Standard ventilation results in high thermal losses through the continuous removal of warm air. We are providing the recuperator system that uses heated air from the inside in order to warm the fresh air from the outside. This solution ensures air exchange while saving energy.

**Alternative energy sources** are both ecological and energy reducing. We offer the selection of photovoltaic cells and wind turbines. The hybrid of these two systems is also possible.

**Thermal insulation and hydro insulation** using modern building materials. For the isolation purposes, we use the polyurethane foam (PUR). This material has an enhanced energy efficiency factor. The foam is applied using the spraying method, so that it fills all the gaps thoroughly. In addition, we cover each module with a coating of closed cell rigid polyurethane foam on the outside. It creates a uniform hydro insulating coating and an additional thermal insulation layer. The external walls are filled with a hybrid of open and closed-cell foam. Such a hybrid solution provides both thermal and acoustic comfort.

## this is why we're different

**A finished house in just one day.** The assembly of your house on site is that fast. We specialize in the production of houses which are manufactured entirely in the controlled environment of our modern factory. The prefabricated modules are transported to the destination and assembled within 24 hours.

**The shortened investment process** is made possible by the fact that the building is created on a modern production line. We are completely independent of the weather conditions. We are using specialized machinery and equipment, not available on a regular construction site. This is why the construction of our building is several times faster, the precision and the quality of work is excellent.

**Fully furnished interiors.** Our houses are ready to move-in. You will find a fully furnished and equipped kitchen, a living room, bedrooms and a bathroom. All the lighting fixtures and the necessary facilities are included. This is how we redefine the meaning of the "turn-key" solution.

**Approved technologies** and renowned manufacturers are our way to achieve high quality and compatibility with the best standards in the field of thermal insulation, acoustic insulation and fire protection. We use only materials certified for buildings – with the parameters exceeding those commonly used.



# STANDARDS



COMPLETE KITCHEN



FURNISHED ROOMS



EQUIPPED BATHROOM



SLIDING DOORS

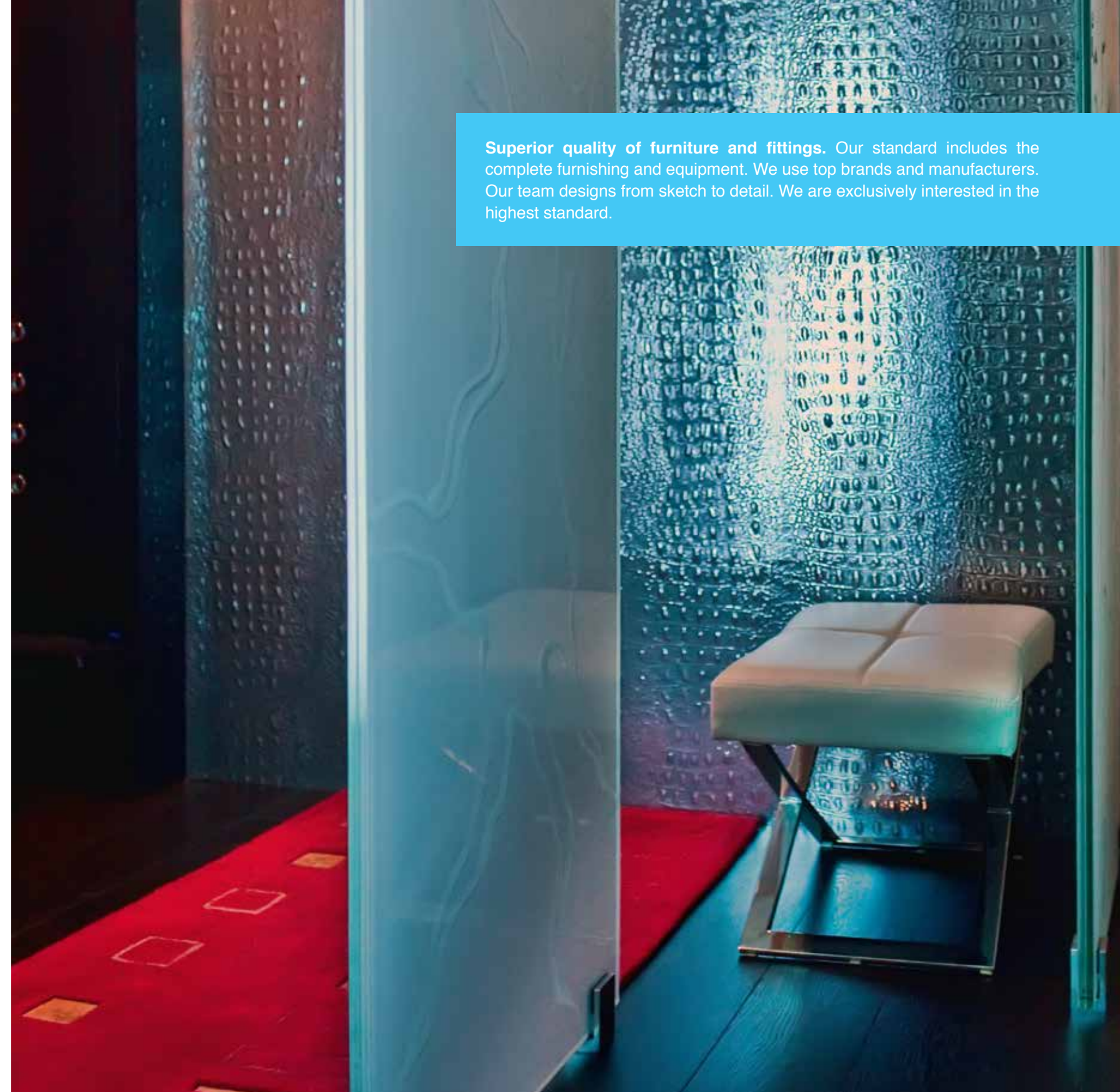


LED LIGHTING



AIR CONDITIONING

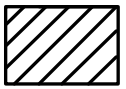
**Superior quality of furniture and fittings.** Our standard includes the complete furnishing and equipment. We use top brands and manufacturers. Our team designs from sketch to detail. We are exclusively interested in the highest standard.



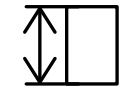


PREMIUM 30

30m<sup>2</sup>  
area



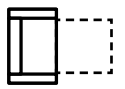
2,80m  
height



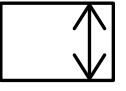
1x  
bathroom



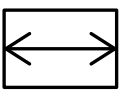
1x  
folding bed



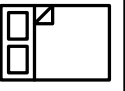
4,95m  
width



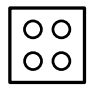
6,10m  
length



1x  
bedroom



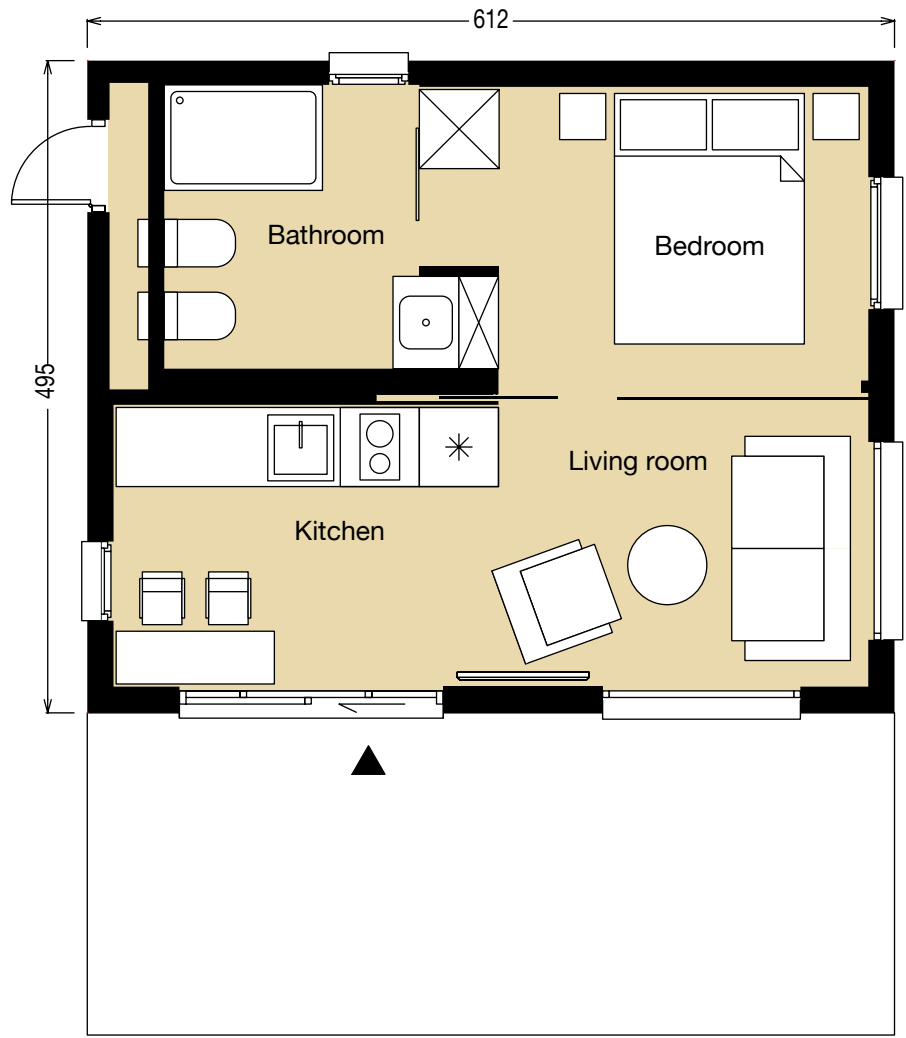
1x  
kitchen



PREMIUM 30

# PREMIUM 30

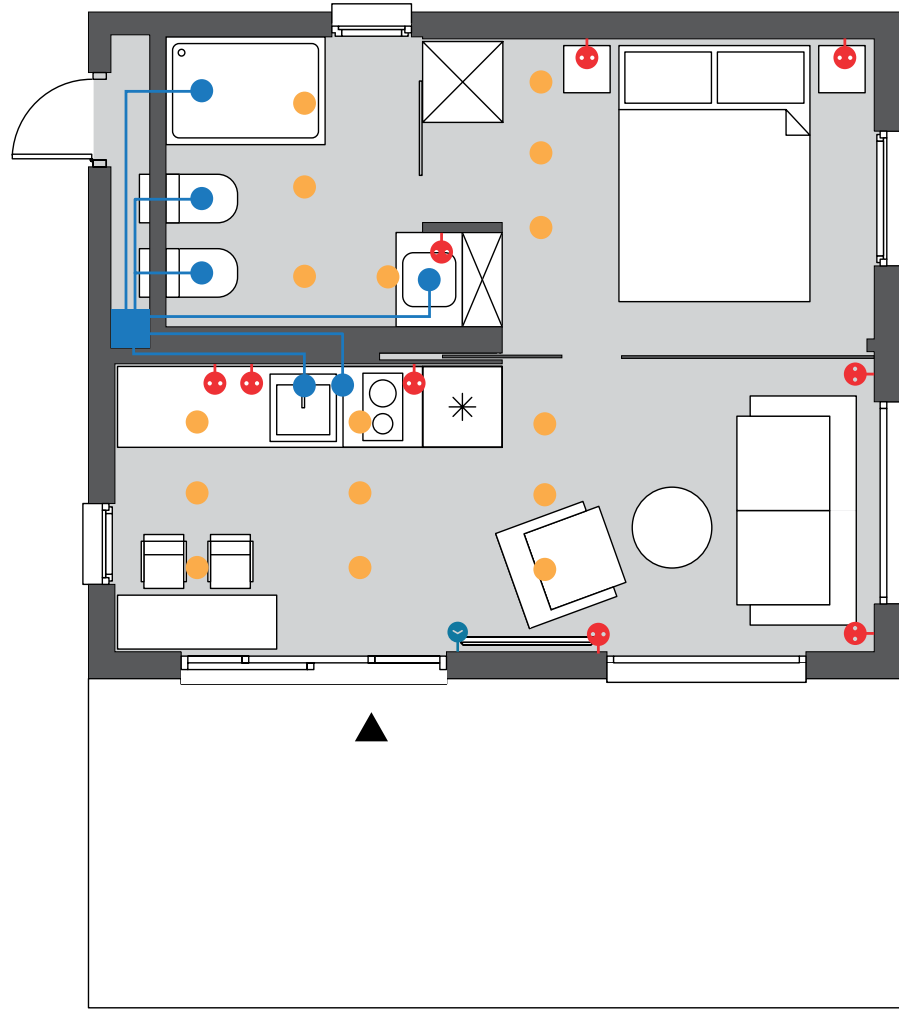
- 30m<sup>2</sup> area
- 2,80m height
- 4,95m width
- 6,10m length
- 1x bathroom
- 1x folding bed
- 1x bedroom
- 1x kitchen



DIAMONDMODULE



# PREMIUM 30

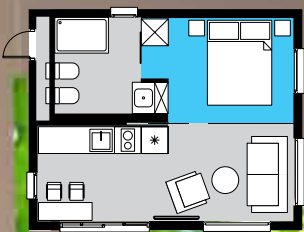


<b>TV</b> socket	<b>LED</b> lighting	<b>220V</b> socket	<b>WATER</b> hot/cold
			



**DIAMONDMODULE**

PREMIUM 30





PREMIUM 30





PREMIUM 45



45m<sup>2</sup>  
area

2,80m  
height

1x  
bathroom

1x  
folding bed

6,10m  
width

7,40m  
length

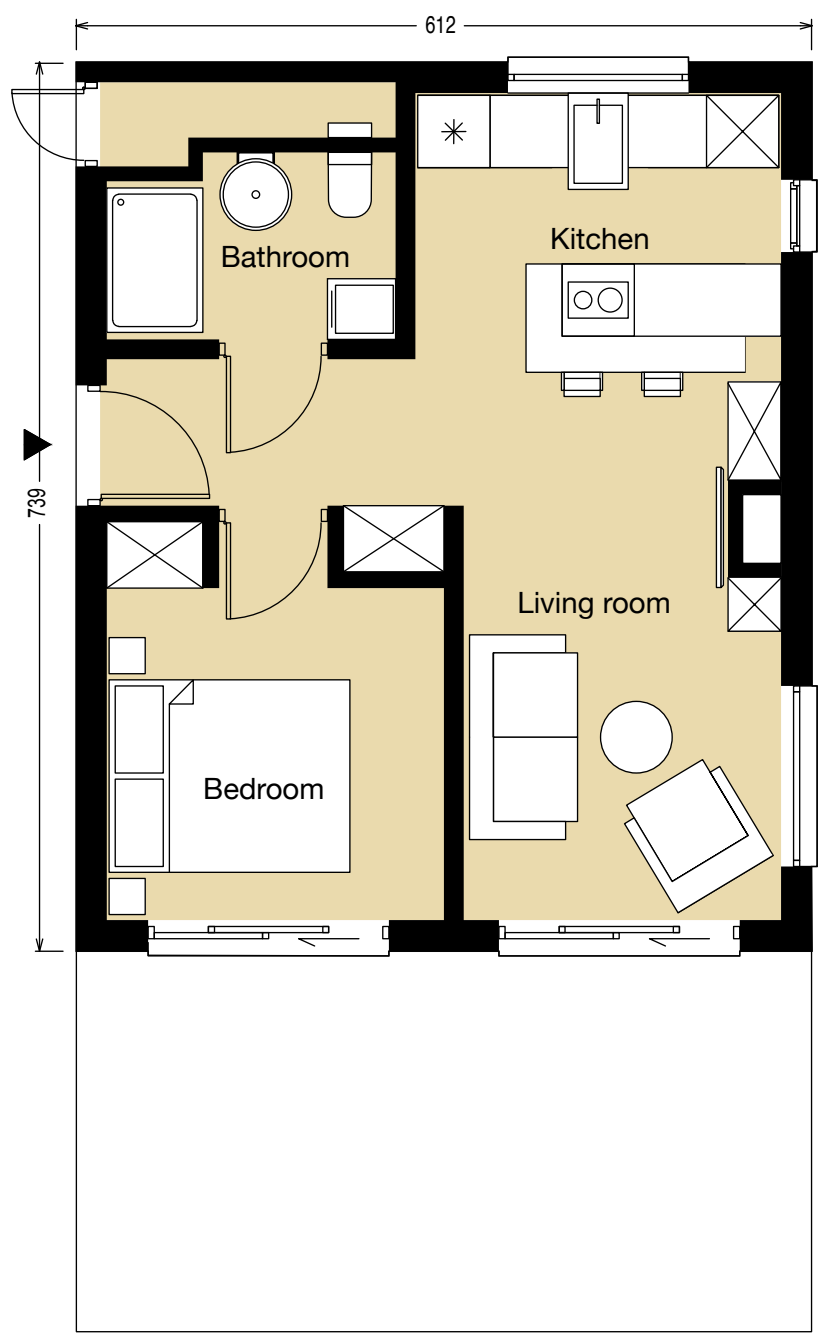
1x  
bedroom

1x  
kitchen

PREMIUM 45



# PREMIUM 45



45m<sup>2</sup>  
area

2,80m  
height

6,10m  
width

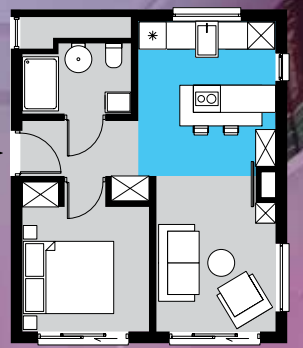
7,40m  
length

1x  
bathroom

1x  
folding bed

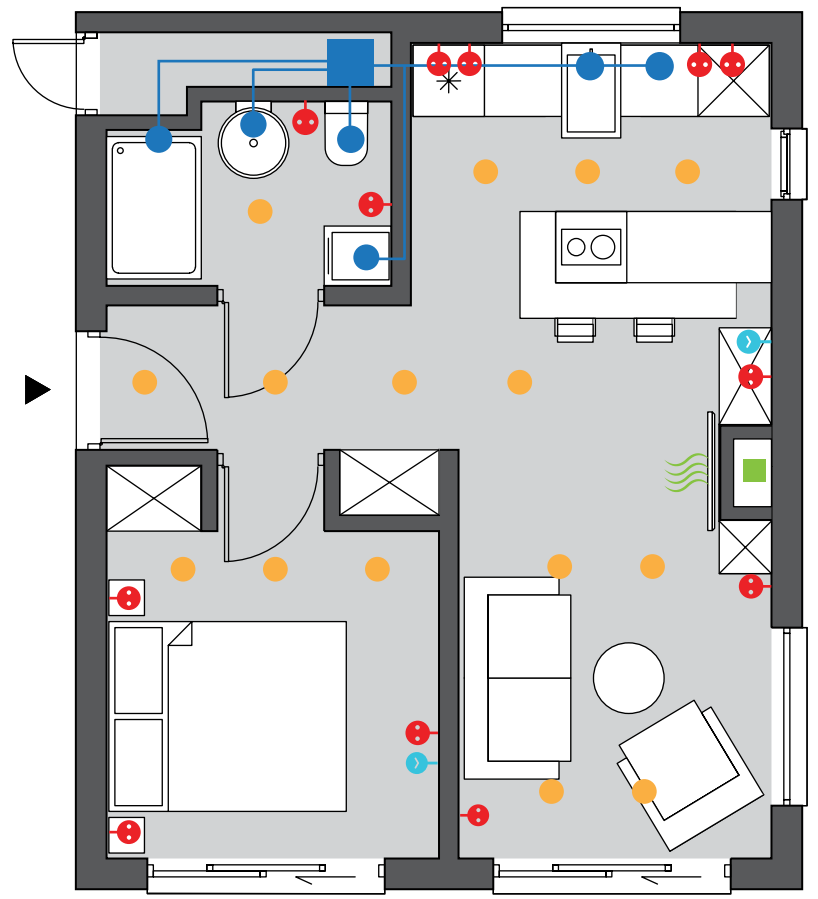
1x  
bedroom

1x  
kitchen



DIAMONDMODULE

# PREMIUM 45



- TV socket
- LED lighting
- 220V socket
- WODA hot/cold
- AIR recuperator



DIAMONDMODULE

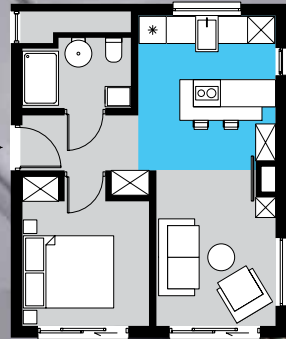
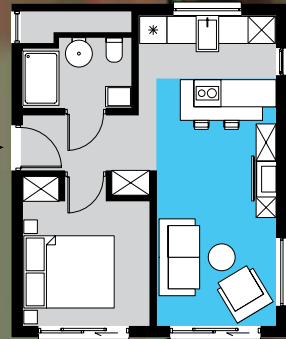


PREMIUM 45





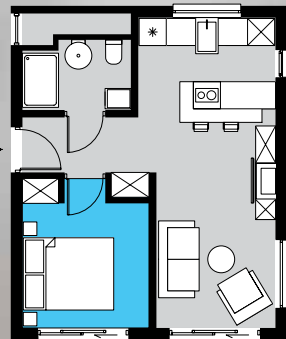
PREMIUM 45



DIAMONDMODULE



PREMIUM 45



DIAMONDMODULE



PREMIUM 45



DIAMONDMODULE

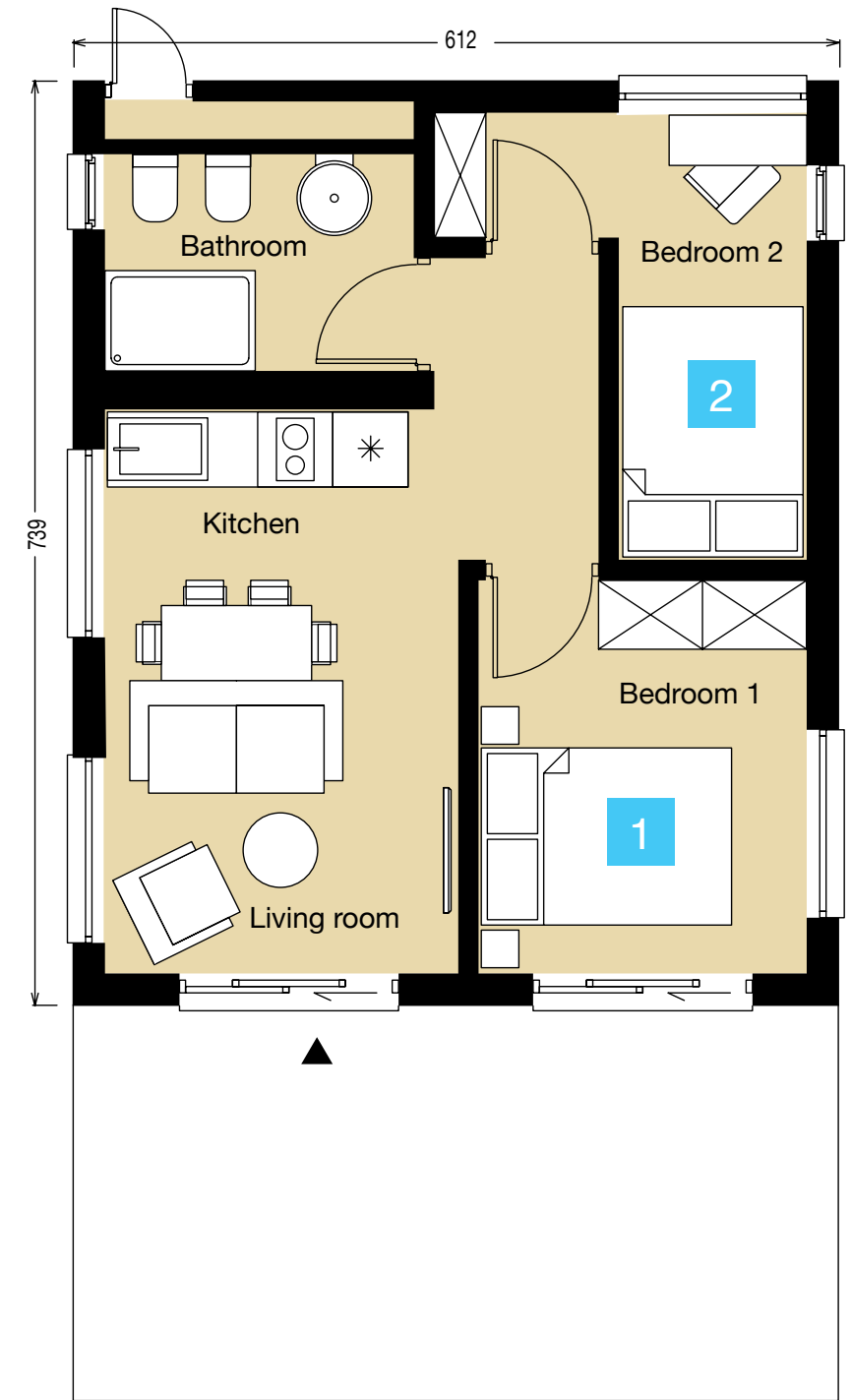


# PREMIUM 45

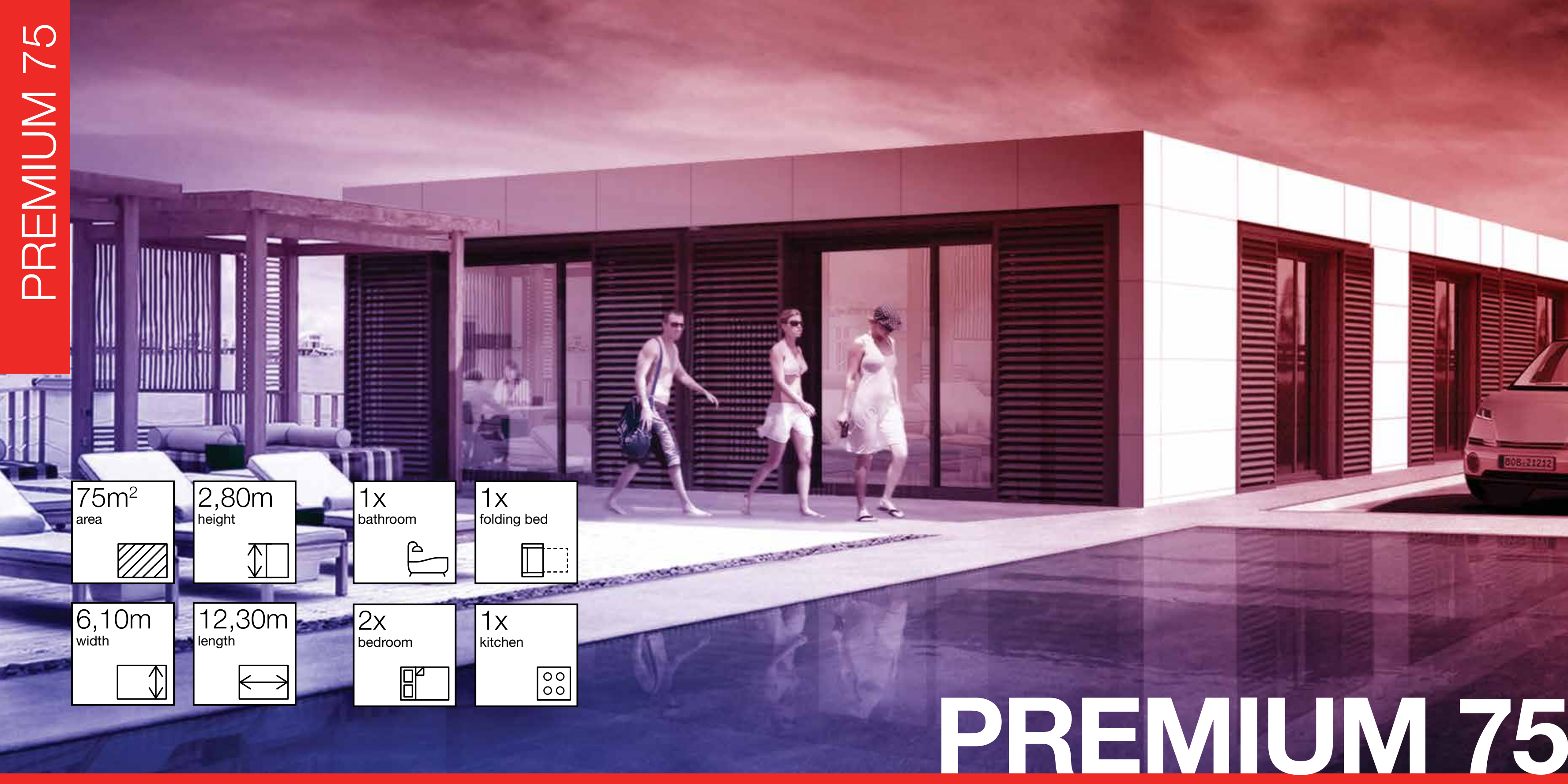


**A two bedroom option**  
Premium 45 is the smallest two bedroom house in our offer. An additional bedroom can also be arranged as children's room with a bunk bed or two beds for small children. The second possible design solution is a full size fold-down bed.

- 45m<sup>2</sup> area
- 2,80m height
- 6,10m width
- 7,40m length
- 1x bathroom
- 1x folding bed
- 2x bedroom
- 1x kitchen



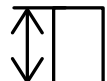
PREMIUM 75



75m<sup>2</sup>  
area



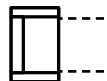
2,80m  
height



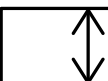
1x  
bathroom



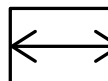
1x  
folding bed



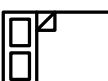
6,10m  
width



12,30m  
length



2x  
bedroom



1x  
kitchen

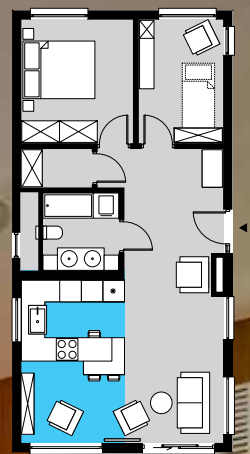
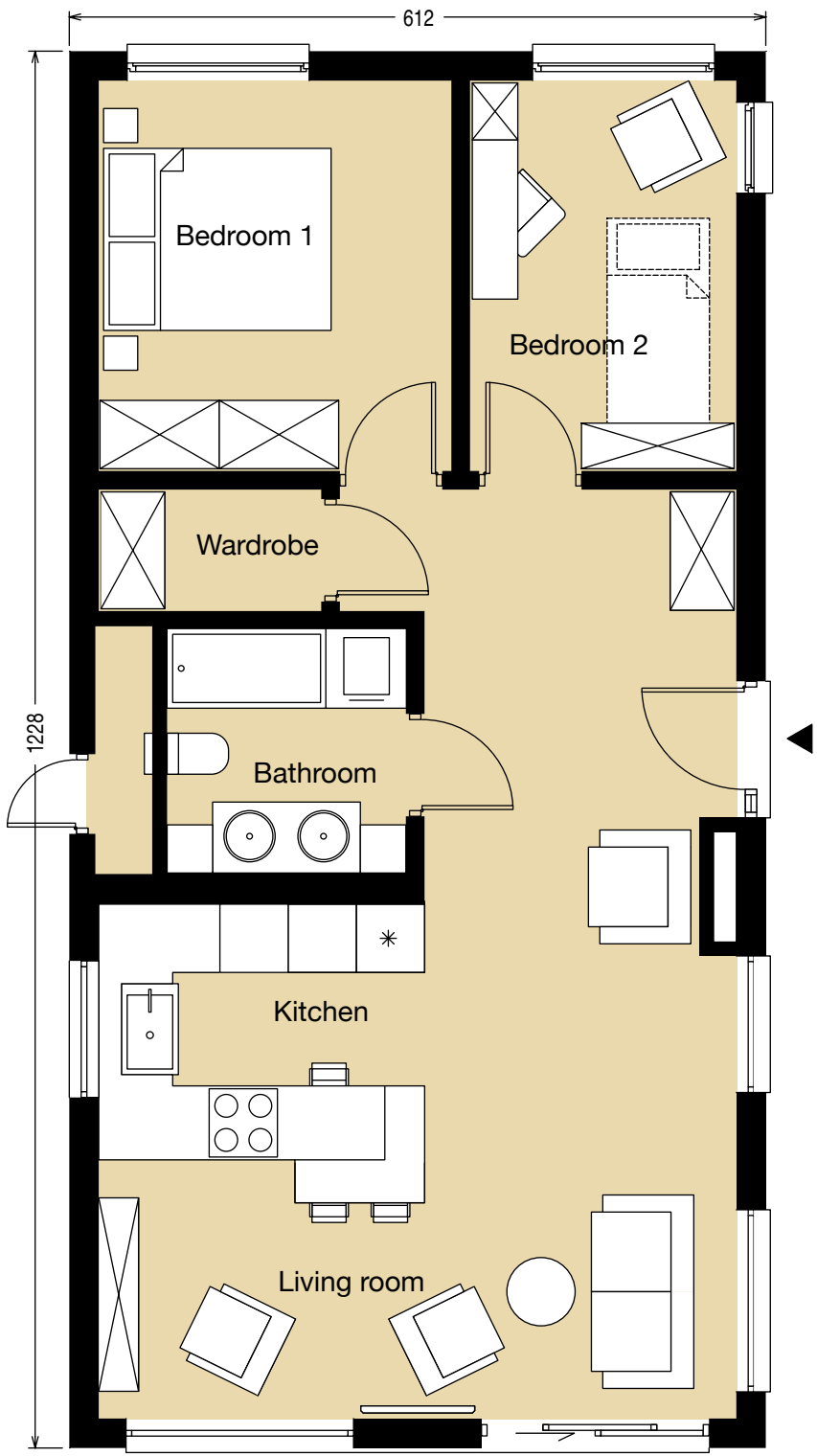


PREMIUM 75



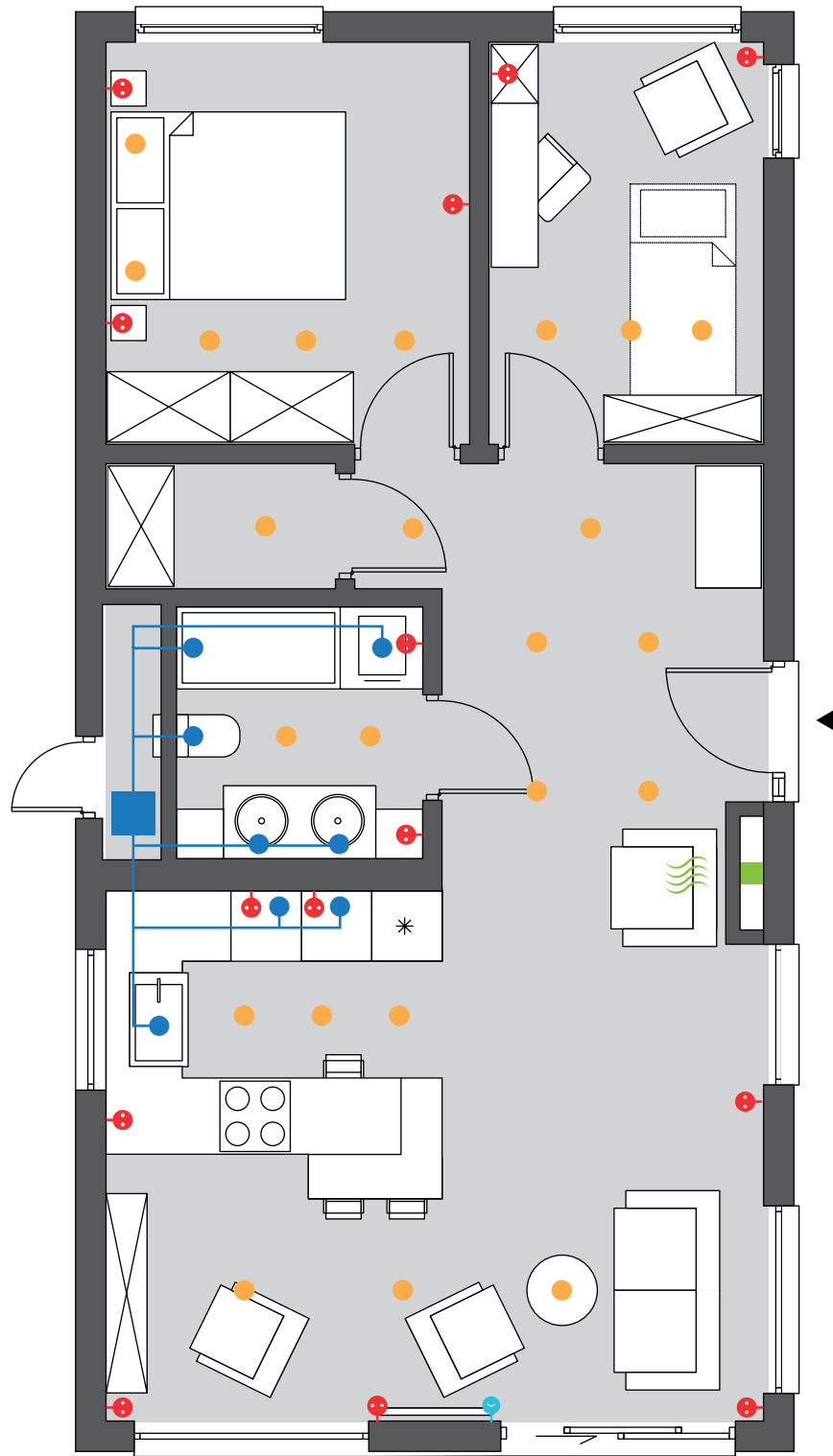
# PREMIUM 75

75m <sup>2</sup> area	2,80m height
6,10m width	12,30m length
1x bathroom	1x folding bed
2x bedroom	1x kitchen



# PREMIUM 75

-  TV socket
-  220V socket
-  LED lighting
-  WATER hot/cold
-  AIR recuperator



DIAMONDMODULE



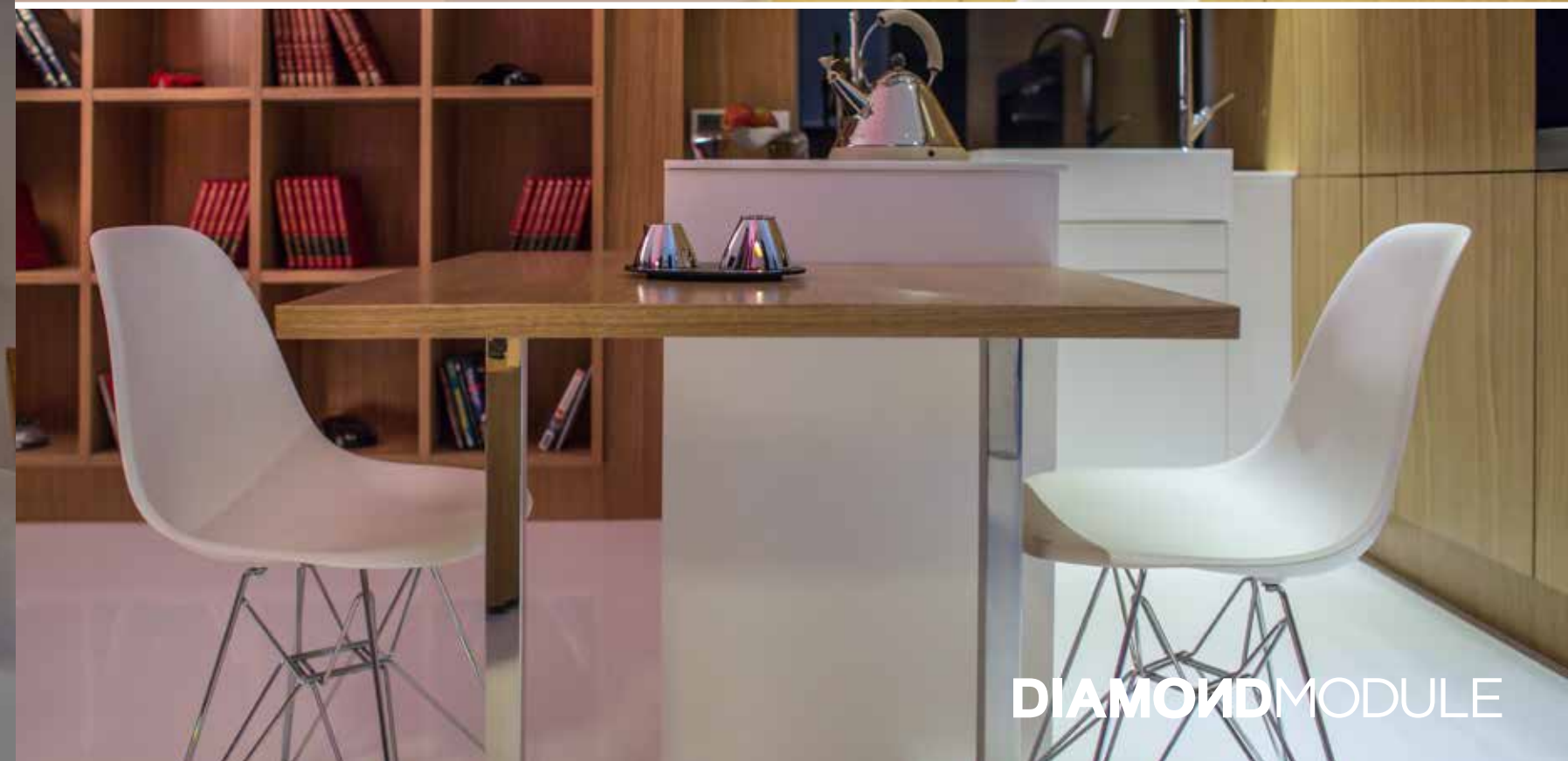
PREMIUM 75



DIAMONDMODULE



PREMIUM 75



DIAMOND MODULE



PREMIUM 75



DIAMONDMODULE



PREMIUM 75

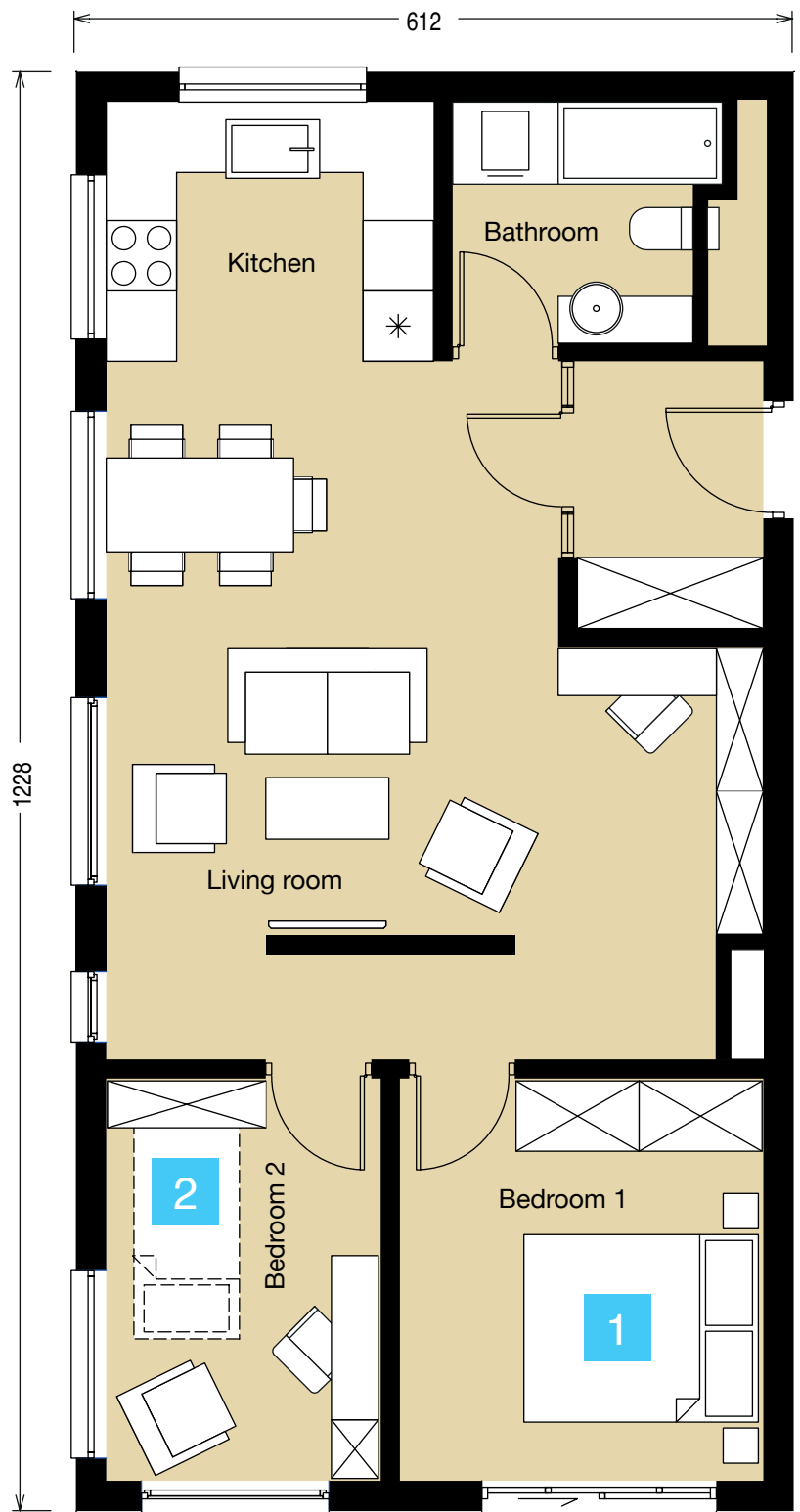


DIAMONDMODULE

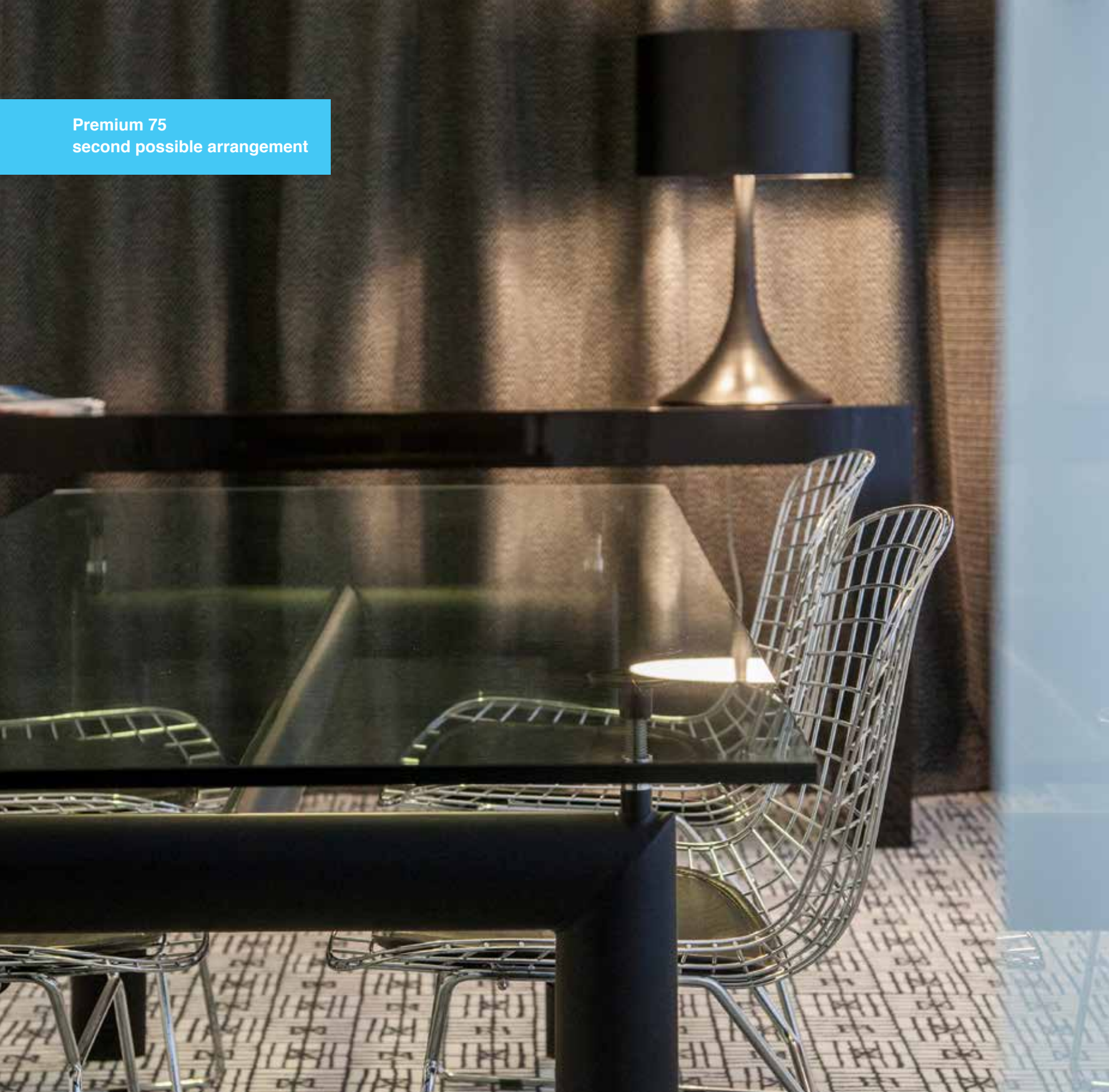


# PREMIUM 75

- 75m<sup>2</sup> area
- 2,80m height
- 6,10m width
- 12,30m length
- 1x bathroom
- 1x folding bed
- 2x bedroom
- 1x kitchen



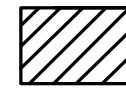
Premium 75  
second possible arrangement



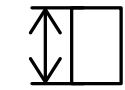


PREMIUM 120

120m<sup>2</sup>  
area



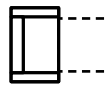
2,80m  
height



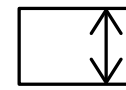
1x  
bathroom



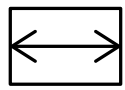
1x  
folding bed



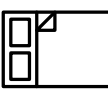
14,70m  
width



12,30m  
length



2x  
bedroom



1x  
kitchen



PREMIUM 120

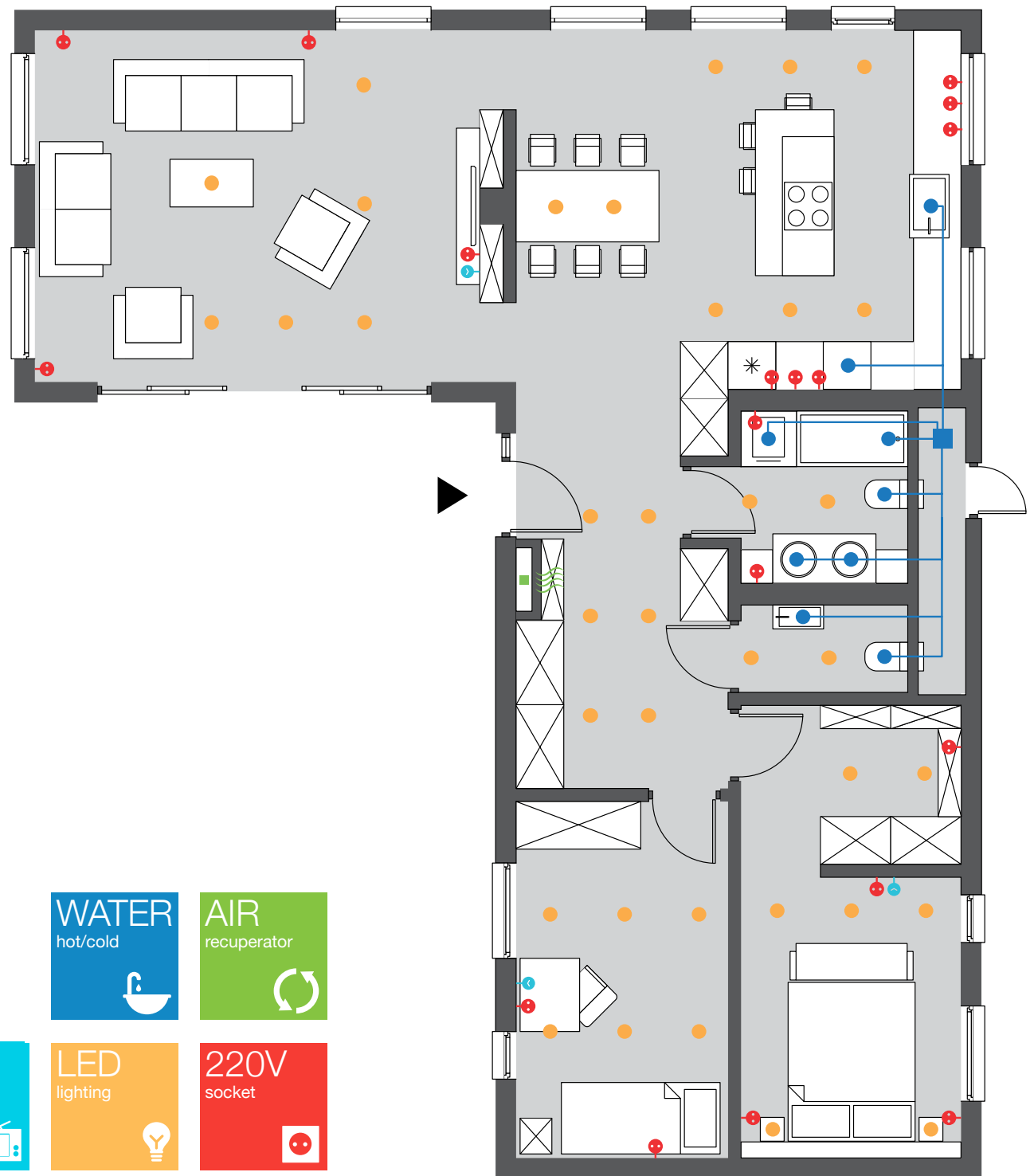


# PREMIUM 120





# PREMIUM 120



DIAMONDMODULE



PREMIUM 120



DIAMONDMODULE



PREMIUM 120



DIAMONDMODULE



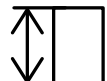
# PREMIUM 120



120m<sup>2</sup>  
area



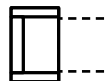
2x2,7m  
height



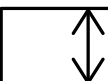
1x  
bathroom



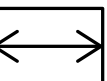
1x  
folding bed



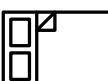
9,80m  
width



6,10m  
length



3x  
bedroom





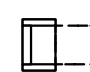
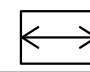
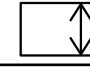
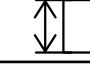
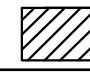
1x  
kitchen

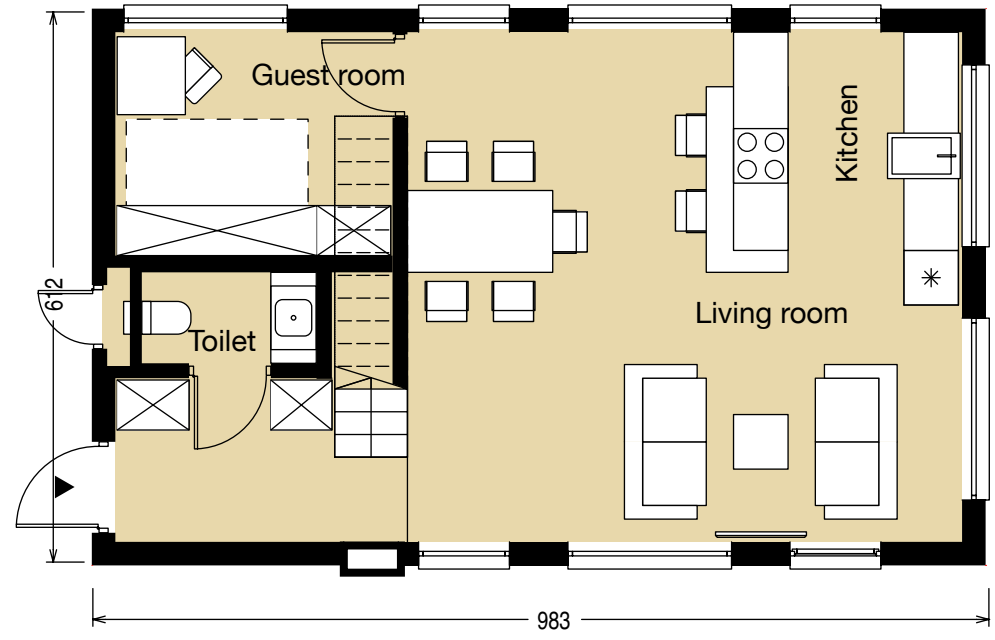


# PREMIUM 120

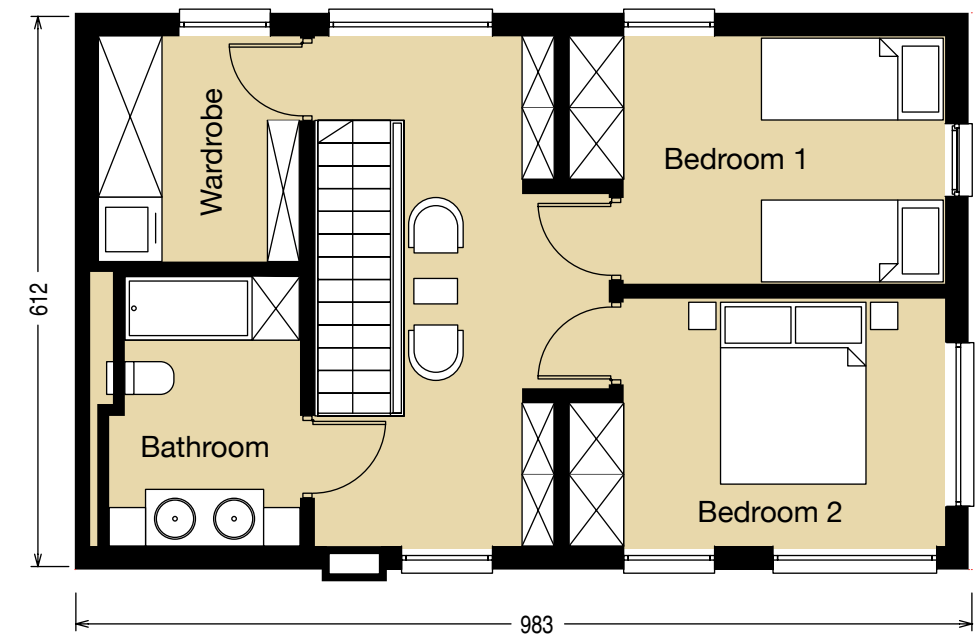


# PREMIUM 120

- 1x bathroom 
- 3x bedroom 
- 1x folding bed 
- 6,10m length 
- 9,80m width 
- 2x2,7m height 
- 120m<sup>2</sup> area 



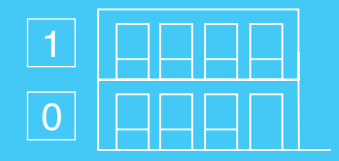
0



1



Two storey variant





# PREMIUM 120

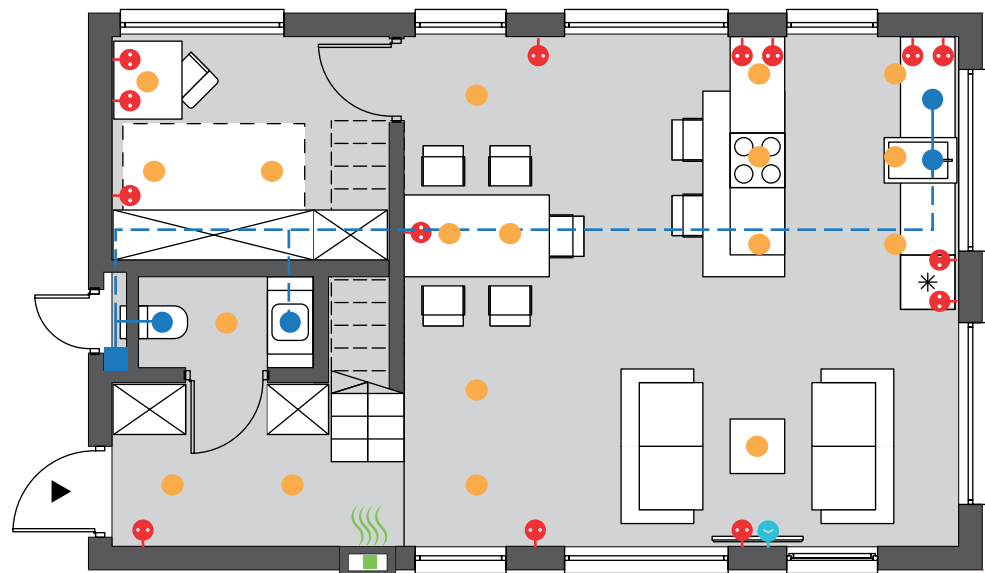
AIR  
recuperator

220V  
socket

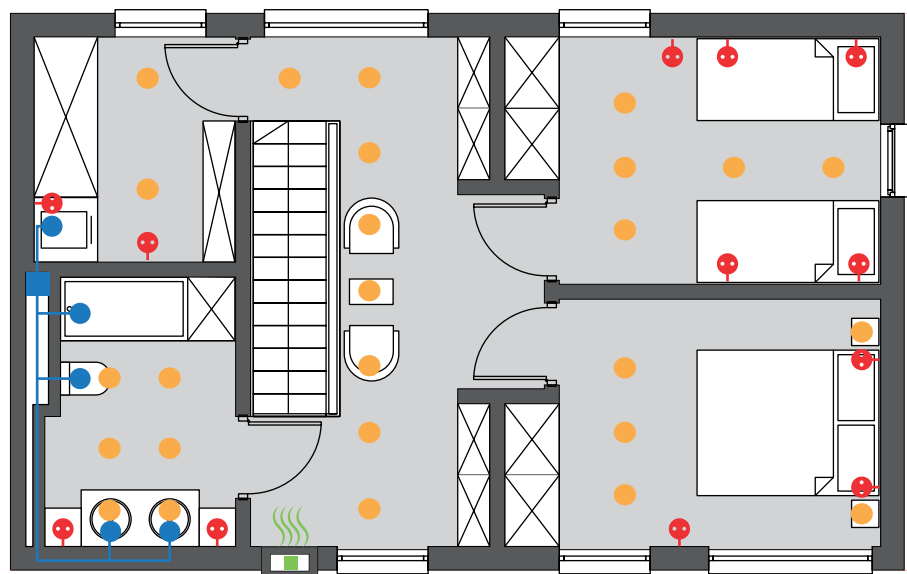
TV  
socket

WATER  
hot/cold

LED  
lighting



0



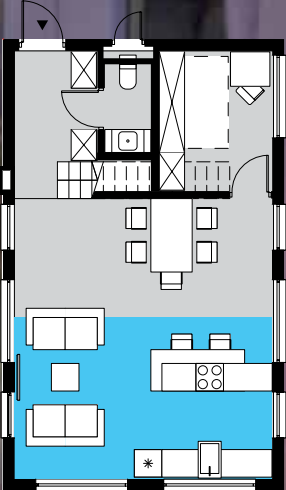
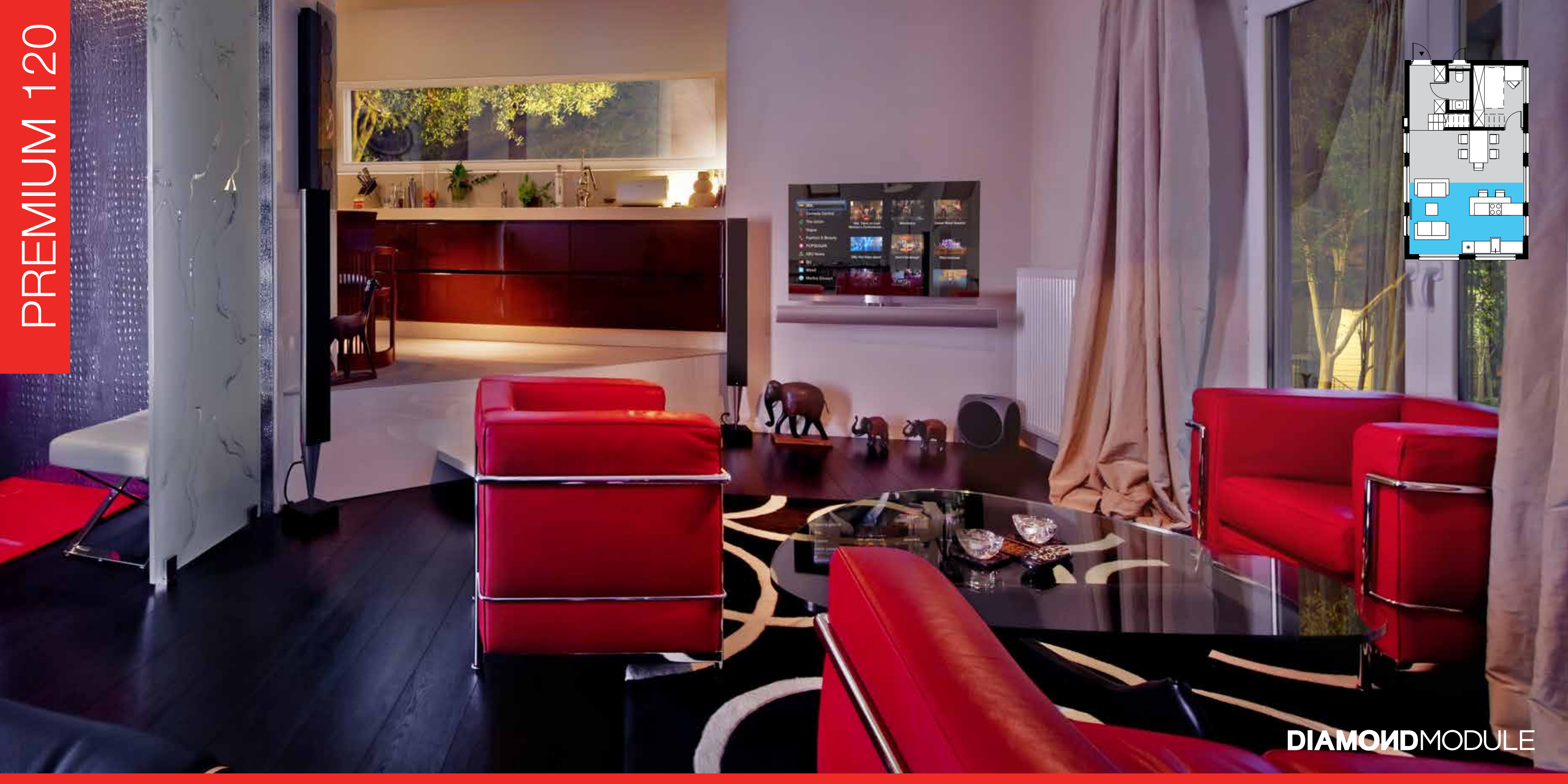
1



DIAMONDMODULE



PREMIUM 120



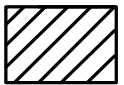
DIAMONDMODULE



45

MOBILE HOME

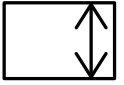
45m<sup>2</sup>  
area



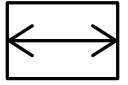
6x  
persons



6,10m  
width



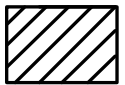
7,40m  
length




30

MOBILE HOME

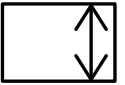
30m<sup>2</sup>  
area



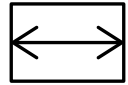
4x  
persons



4,95m  
width

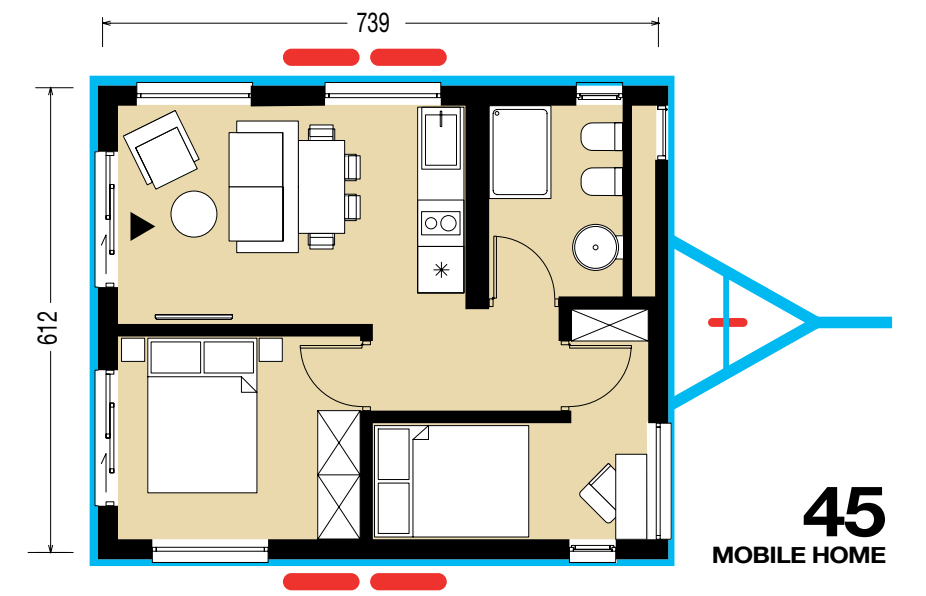
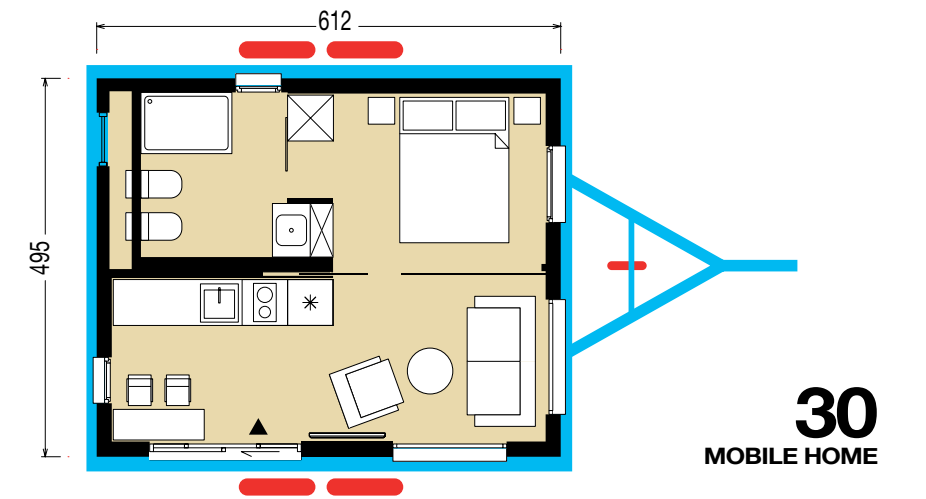


6,10m  
length





# MOBILE HOME



## mobile home

Our buildings can be offered as mobile homes by adding a steel frame on wheels. The size of the frame and the number of wheels is adjusted to the dimensions of the house. This solution allows you to move the house freely within the plot. The house itself retains all its advantages – including the possibility of disassembling, moving to another location and reassembling.

More information at [www.diamondmodule.com](http://www.diamondmodule.com)

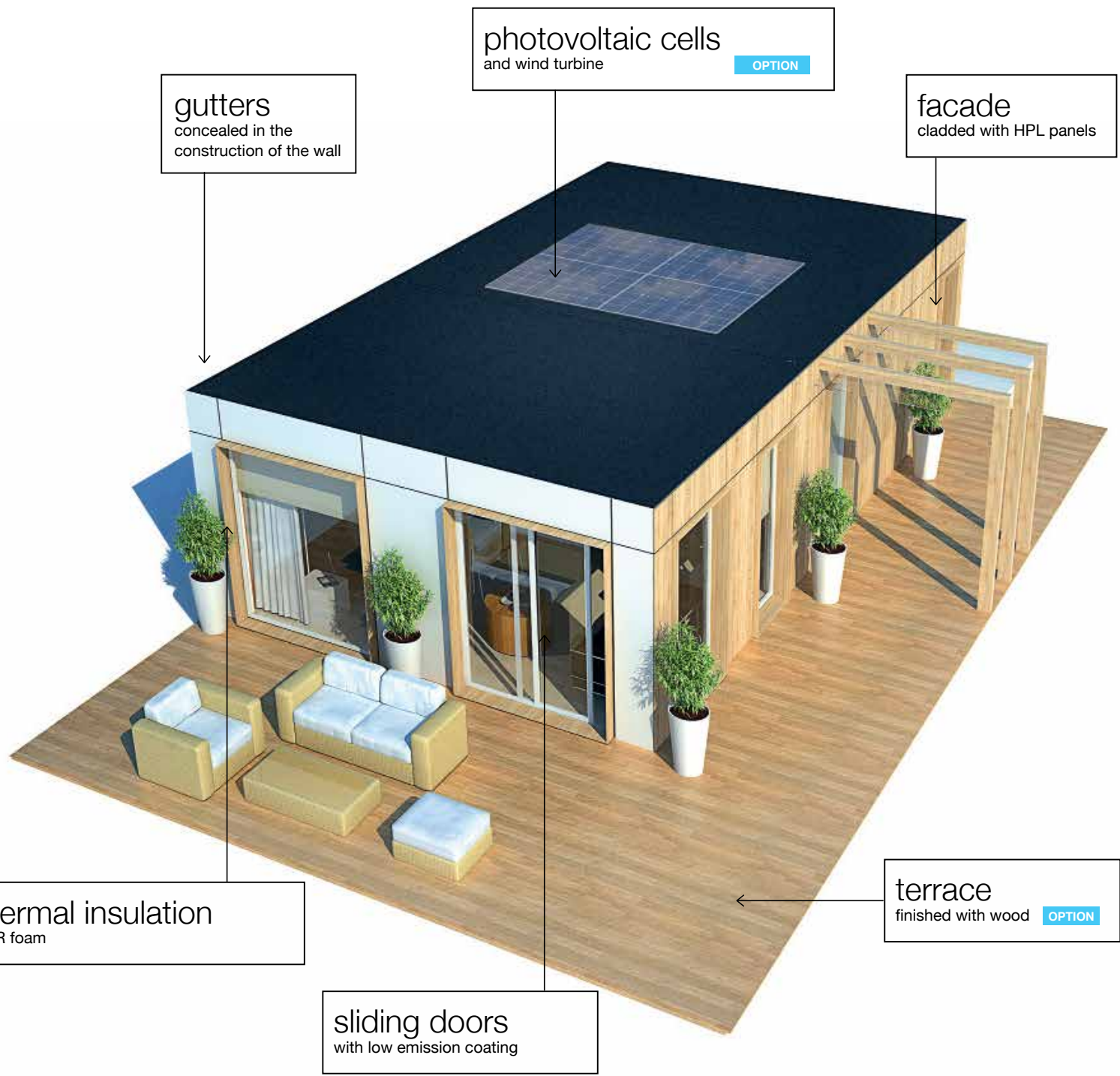


TECHNOLOGY



TECHNOLOGY





pitched roof

Offered as an optional superstructure according to individual customer preferences or local legal requirements. It is possible to build any slope and geometry of the roof.



horizontal expansion

Freedom in designing the building scheme through the possibility of flexible module addition. This allows you to tailor the size of the house according to individual needs.

vertical expansion

Our houses can be extended upwards. Adding extra storey is a perfect solution on limited site area.







#01



#02



#03



#04



#05



#06



#07



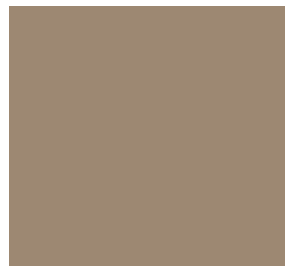
#08



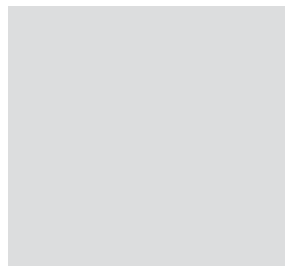
#09



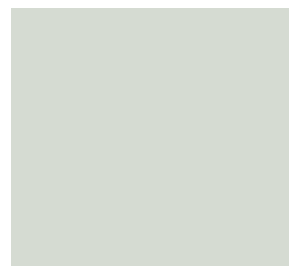
#10



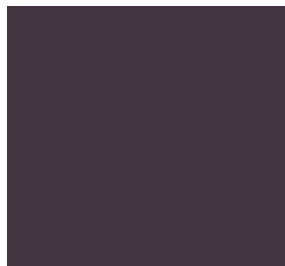
#11



#12



#13



#14



#15



#16

## facade panels

Wide range of designs and colors allows you to freely modify the appearance of the building – from the natural patterns of wood, vibrant colors to digital print with any motif.

### Characteristics of the panels:

- cleaning or maintenance free
- scratch resistant
- atmospheric factors and UV rays resistant
- impact and solvents resistant
- fully washable (graffiti is easily removable)
- long-lasting, vibrant, non-fading colors



Full selection of materials at [www.diamondmodule.com](http://www.diamondmodule.com)





#01



#02



#03



#04



#05



#06



#07



#08



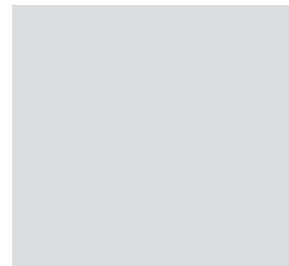
#09



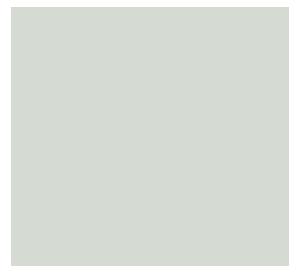
#10



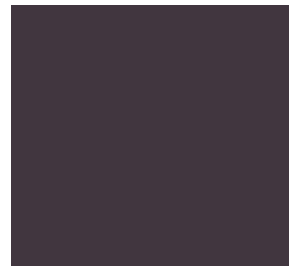
#11



#12



#13



#14



#15



#16

## wall finishes

We offer high quality MDF-board panels as the interior wall finishes. They can be covered with wood veneer, laminate, foil or lacquered. The advantage of this technology is the exceptional durability and high aesthetic values.

The panels are a good acoustic and thermal insulator. They are fire retardant. They do not require maintenance and can be cleaned with water with the addition of the regular washing agents.

The technology allows for easy replacement of any damaged elements. The panels can be changed to a different color or pattern when desired.



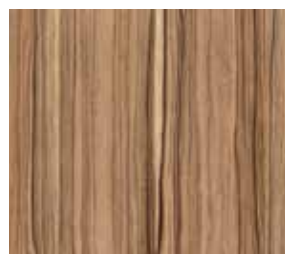




#01



#02



#03



#04



#05



#06



#07



#08



#9



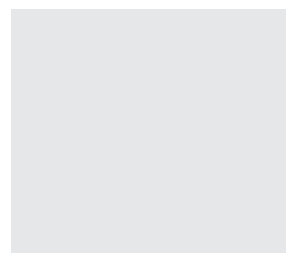
#10



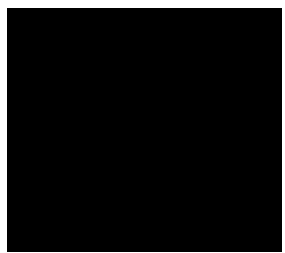
#11



#12



#13



#14



#15



#16

## laminated floors

We offer the highest quality laminated floors from RESOPAL.

### Main advantages :

- waterproof
- high-abrasion resistance class
- covered with a protective layer formed on the basis of corundum (sapphire)
- solid waterproof connection system
- covered with HPL laminate
- wide range of colors and patterns
- guarantee of wear resistance for the most heavy duty surfaces



Full selection of materials at [www.diamondmodule.com](http://www.diamondmodule.com)

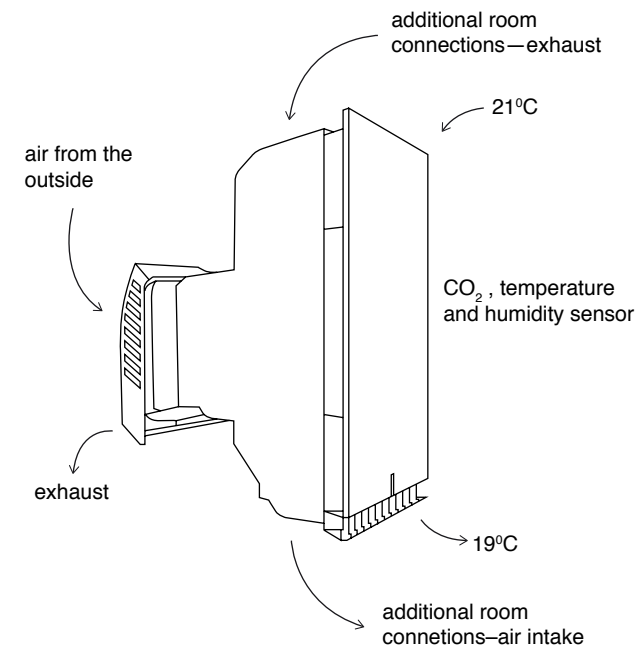


# recuperator

Standard ventilation results in high thermal losses through the continuous removal of warm air from the house. We are providing the recuperator system that uses heated air from inside of the house in order to warm the fresh air from the outside. This solution ensures air exchange while saving energy.

### the advantages of the recuperator:

- high efficiency in the recovery of heat (about 85%), which translates into a significant reduction in heating costs
- sensors measuring CO<sub>2</sub> levels, air humidity, and temperature allow for the automatic regulation of the quantity and humidity of the supplied air
- protection against mold formation
- warms the supplied air during winter and cools during summer
- fully automatic operation with the adjustment of the parameters
- one device is enough to supply the optimum amount of fresh air to the living area of 75 square meters







## alternative sources of energy

Our buildings have the option of using alternative energy sources. This kind of technology decreases significantly the electricity demand. We offer photovoltaic cells, wind turbines or a hybrid system.

### Photovoltaic cells

- PV module with a 2,0mm glass
- solar glass with nano anti-reflective coating
- glass with a low iron content allows for a 98% transmission of light
- use of glass as the back layer of the panel
- elimination of the panel frame and a laminate with Tedlar
- tightness of the panel and the protection of the glass edge achieved through the use of butyl rubber
- durability of the panel is 40 years – almost two times more than the traditional one

### Properties of the cells:

- high output power 279W for a panel with 60 cells
- 335W for a panel with 72 cells
- high efficiency
- energy efficiency of the entire module close to the efficiency of the cells – low losses in the production process
- extremely thin cells reducing the consumption of silicon in the production

### Wind turbine with a vertical rotation axis

- wind turbine with a vertical axis (VAWT)
- unique and patented shape of of the composite rotor
- silent operation at maximum speed
- aesthetic look harmoniously blending in the surroundings
- low requirements for the speed of wind
- equal work irrespective of the direction of wind
- low weight and size allows for easy and fast installation

### The hybrid system

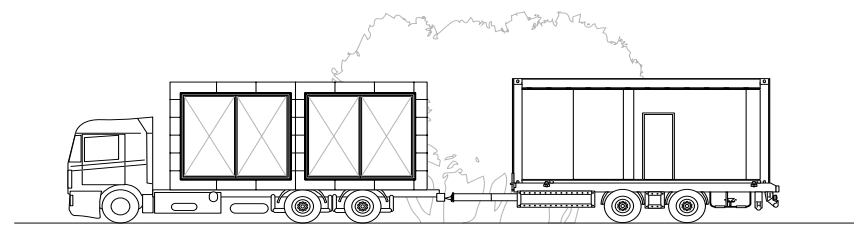
The combination of solar energy and wind power (the so-called hybrid system) provides many benefits. Energy produced by the PV panel has different daily and annual fluctuations than the energy produced by the wind turbine.

These systems can complement each other very well increasing the independence from the changing weather conditions.

Building both systems at the same time is cheaper than installing them separately.

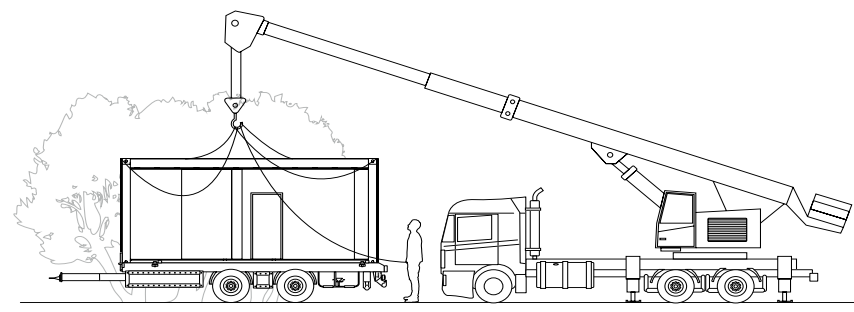


# transport and assembly



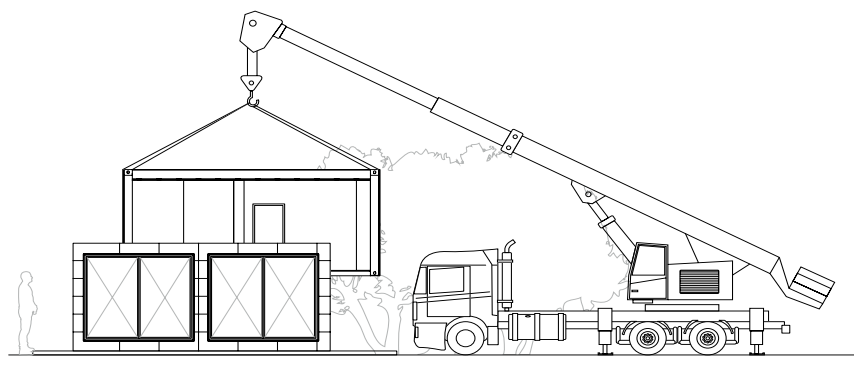
1

**Safe transport.** The finished modules are designed to be easily transported. Protection against adverse weather conditions and mechanical damage is provided. Transport by truck, rail or sea is possible.



2

**Easy unloading.** After the delivery to the construction site, the modules can be set up directly on the previously prepared foundations, without the need of storage.



3

**Fast assembly.** The installation of our products is like building from blocks. All modules are compiled together in one plane and then fastened. The system provides the possibility of disassembling and reassembling in another location.





DiamondModule  
e-mail: [contact@diamondmodule.info](mailto:contact@diamondmodule.info)  
[www.diamondmodule.info](http://www.diamondmodule.info)

