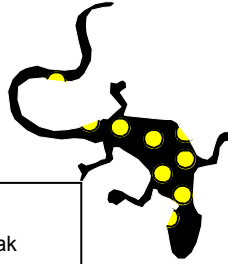


Description: A specialist hygienic breakaway coupling designed to eliminate the cost, production loss and general inconvenience associated with a tanker drive-away incident



Benefits:

- Simple in-house resetting of product following break
- Avoids plant downtime
- A low risk management aid
- Prevents injuries from drive-off incidents
- Eliminates repair/renewal costs and hose replacement

Features:

- Hygienic permanent coupling capable of CIP
- Supplied with any industry standard hygienic fittings or to customer specification
- Standard Tri-clamp single sealing system

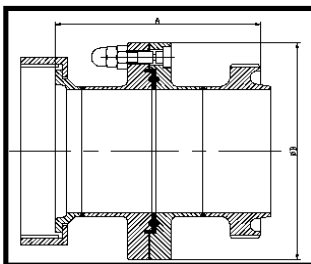
Hygienic Breakaway Coupling :

Combining the tried and tested hygienic sealing abilities of the tri-clamp type gasket and the universally accepted material properties of 316 Stainless Steel, with the ability to break apart at a pre-determined load.

At the heart of this innovative product are a series of precisely machined waisted connector pins designed to break at a load sufficiently large to prevent accidental failure during day-to-day handling of hoses, but low enough to prevent damage in the event of a drive-away incident with a tanker.

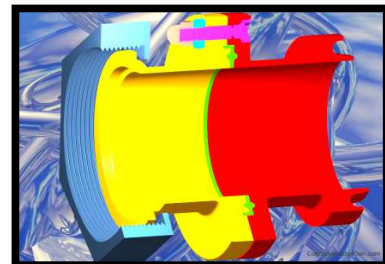
Due to its design, the Salamander can be fitted with any of the standard hose ends used within the industry, and as an option, can be fitted with customers own proprietary end fittings. To allow the connector to be used for CIP duties its central sealing gasket is of the Tri-Clamp type which provides a smooth crevice free joint combined with easy availability should it ever need to be replaced.

The coupling is designed such that it will operate in both straight tension and if excessive bending load is applied, i.e. if a tanker were to drive away at an angle to the axis of the coupling. If the coupling is so activated, its design is such that it can be rapidly put back into service simply by fitting a new set of connector pins, and a new gasket if necessary. This operation can be carried out on site by suitably trained maintenance personnel using only easily available hand tools.



Performance Specification

Property	Performance
Maximum Working Pressure	10 Bar (g)
Breaking Load	1500 kg (typical)



Dimensions (mm)

End Fitting		2 in NB	2.1/2 in NB	3 in NB
Dimension A	RJT	92	92	92
	IDF	99	99	99
	Tri-Clamp	82	82	82
	SMS	86	90	91
	DIN 11851	120	129	139
	ASME 150	167	173	177
Dimension B		93	106	120

Materials

Component	Quantity	Material
Body Side 1	1	316L Stainless Steel
Nut (if applicable)	1	304 Stainless Steel
Body Side 2	1	316L Stainless Steel
Gasket	1	EPDM*
Connector Pin	3	431 Stainless Steel
Nuts	6	316 Stainless Steel

* Alternative materials available

Website : www.flexrite.co.uk

E-mail: enquiry@flexrite.co.uk

Tel : +44 (0)1933 673699

Fax : +44 (0)1933 675819

19 The Trinity Centre
Park Farm Industrial Estate,
Wellingborough, NN8 6ZB