



NETBALL
Teamwear,
Bags, Balls and
Equipment

Available in club colours
for your team

'Made to Order' for
schools and clubs

Core colours immediately
from stock

CREATED₂PERFORM

Introduction

Welcome to Gilbert Netball Teamwear Brochure. Our Teamwear service is available across all of the Grays sports ranges as well as Gilbert Netball, including Gilbert Rugby, Gray-Nicolls Cricket and Grays Hockey.

The Netball teamwear range offers a combination of high performance fabrics in conjunction with a comfortable and functional fit to meet players and teams kit requirements at every level. This means you can design and wear kit for your team developed by one of the netball world's leading sport-specific match, training and performance brands.

We have dedicated teams in our various design departments who will ensure you receive the highest standard of expertise and technical support throughout the entire process. At home and abroad; manufacturers, embroiderers, printers and a global network of distributors are just a phone call away.

As well as a portfolio of International, elite and premier associations and clubs such as Netball Jamaica, Netball Scotland, International Umpires Association, Northern Thunder and Yorkshire Jets, we also supply kit to teams such as A P Saints, Oldham and Glasgow to name but a few.

For further information or for a copy of our latest Teamwear brochure, please call us on 01580 883120.



160th Anniversary

Grays since 1855 – 160 years in sport



facebook

gilbertnetball



Contents

MATCHWEAR - Sublimated Styles

Elite Dress	2
Flare Dress	2
Eclipse II Dress	2
Blaze Dress	2
Elite Tank Top	4
Helix Top	4
Elite Skort/Skort	5
Eclipse II Shorts	5

MATCHWEAR - Made To Order

Elite Dress	6
Elite Tank Top	6
Elite Skort	7
Flare Dress	7
Eclipse Dress II	8
Eclipse II Shorts	8
Helix Top	9
Helix Skirts / Skorts	9

TEAMWEAR PAGES

Vixen Range	11
Revolution Range	12
Storm Range	13
Pro Team Range	14

MATCHWEAR - Stocked Items

Elite Dress	6
Elite Tank Top	6
Elite Skorts	7
Flare Dress	7
Eclipse II Dress	8
Eclipse II Shorts	8
Helix Top	9
Helix Skirt/Skort	9
Blaze Polo Shirt	10
Blaze Shirt	10
Blaze Tank Top	10
Blaze Skirt / Skort	10

TRAINING WEAR - Made To Order

Revolution ½ Zip Jacket	15
Revolution Over Trousers	15
Vapour XP ½ Zip Jacket	16
Vapour XP Trousers	16
Storm Shower Jacket	16
Pro Team Shower Jacket	16
Revolution Hoodie	17
Vapour Hoodie	17
Pro Team Hoodie	17
Storm Hoodie	17
Blaze Track Top	18

Blaze Track Trousers	18
Revolution Track Top	18
Revolution Track Trousers	18
Pro Team Track Top	19
Pro Team Track Trousers	19
Synergie Track Trousers	19
Vapour Polo Shirt	20
Vapour Tee Shirt	20
Matrix Polo Shirt	20
Matrix Tee Shirt	20
Pro Team Polo Shirt	21
Pro Team Tee Shirt	21
Vibe Polo Shirt	21
Netball Vest	21
Storm Shorts	23
Vapour Gym Shorts	23

TRAINING WEAR - Stocked Items

Revolution ½ Zip Jacket	15
Revolution Trousers	15
Synergie Track Trousers	19
Vixen Jacket	22
Vixen Leggings	22
Vixen Training Top	22
Vixen Pants	22
Elite Warm Up Top	22
Padded Gilet	22
Vixen Hoodie	23
Leisure Shorts	23
Vixen Shorts	23

LUGGAGE

Club Player Rucksack	24
Club Player Holdall	24

NETBALLS

Spectra Match ball	25
Pulse Training Ball	25

PITCHSIDE EQUIPMENT

Bibs	26
Post Protectors	27

ACCESSORIES

Pitch and Training Accessories	28
--------------------------------------	----

OTHER INFORMATION

Website	29
Order Procedures	30-31
Embellishment Service	32
Embellishment Positions	33
Glossary of Fabric Terms	34
Size Chart	35
Colour Chart	36-37

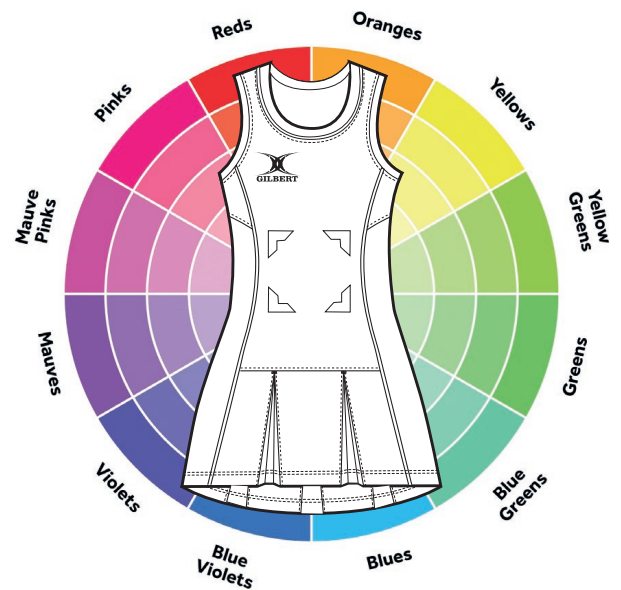
Sublimated Style!

A full range of our netball dresses, tops, skirts, shorts and shorts can be customised to co-ordinate your team's colours.

Club & sponsor logos can be added at the same time as players names and numbers on sublimated items at no extra cost.

For teams who require complex printed graphics, Gilbert Netball offer high-performance sublimated items. Our design team will work with you to create the design that is right for you.

Gilbert netball dresses are made from high quality stretch fabric with moisture control to wick sweat away and help to keep you dry and comfortable. Velcro attachments are placed front and back for the addition of patch bibs with court position.



Elite Dress

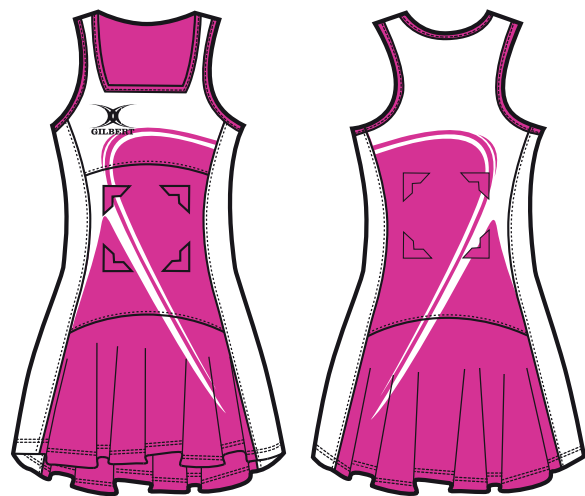


Regular Fit Code: 28848s
Tall Fit Code: 28939s

Level: Premier and elite teams.

- Scoop neck for an unrestricted fit.
- Pleats at hem for enhanced range of motion and style.
- Racer back with space for addition of player name.

Flare Dress



Regular Fit Code: 27221s
Tall Fit Code: 27225s

Level: Premier, elite and regional teams.

- Featuring a square neck for a fashionable yet unrestricted fit.
- Fullness of fabric at hem for enhanced range of motion and style.
- Racer back with space for addition of player name.

Eclipse II Dress



Regular Fit Code: 27222s
Tall Fit Code: 27227s

Level: Regional, county and club teams.

- Scoop neck for an unrestricted fit.
- Improved fit stretch fabric for added comfort in wear.
- Racer back with space for addition of player name.

Blaze Dress



Regular Fit Code: 27224s
Tall Fit Code: 27066s

Level: All levels.

- Bound scoop neck
- Blank canvas for applying sublimated design
- Classic slim fit dress

Specifications

SIZES: Women's 6 - 20.

FIT STYLES: Available in regular fit or tall fit.

FABRIC: G-Pro Stretch 700

Minimum Order Quantity: 12

Lead Time: 8 weeks from order acceptance.
(see order procedures on page 30)

Sublimated Examples

The dresses shown below are displayed simply as examples of sublimated printing. Any printed colour and design is possible, but where garments have pleats the design must include a single solid colour over the pleats. Choose your own design or select one from the examples shown below.



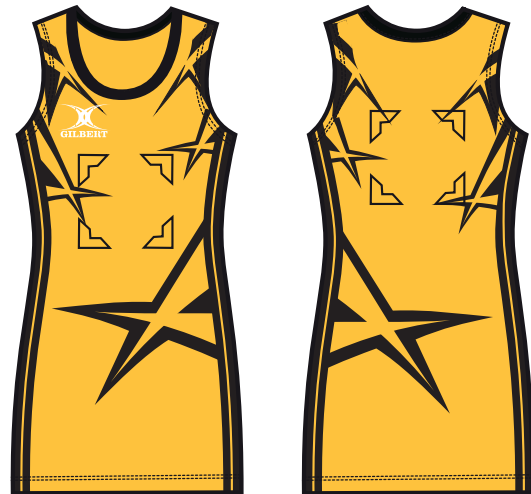
Design Code : 001



Design Code : 002



Design Code : 003



Design Code : 004



Design Code : 005



Design Code : 006

For more detailed information, to place an order, or to discuss your requirements call: 01580 883120

Sublimated Tops

Dazzling designs, sculpted shapes and stretch fabrics add to on court appeal and performance. Our Helix and Elite Tops can be sublimated with any printed design. Patch Bibs can also be colour-matched to complement your chosen design. Examples of sublimated printing are shown below.

Specifications

SIZES: Women's 6 - 18.

FIT STYLES: Available in regular fit or tall fit.

FABRICS: G-Pro Stretch 700.

Minimum Order Quantity: 12

Lead Time: 8 weeks from order acceptance.
(see order procedures on page 30)

Elite Tank Tops



Regular Fit Code: 28849S
Tall Fit Code: 28940S

Level: Premier and elite teams.

Made to move with you as you cover the court, the Elite tank top features eye-catching style with sweat-wicking fabric to help keep you in top form.

- Scoop neck for an unrestricted fit.
- Moisture control fabric to wick sweat away and help keep you dry and comfortable.
- Racer back with space for addition of player name.
- Velcro attachments front and back for patch bibs.

Helix Tops



Women's Tall Fit (with velcro) Code: 28942S
Women's (with velcro) Code: 28891S
Women's Tall Fit (without) Code: 28941S
Women's (without) Code: 28892S
Junior's (with velcro) Code: 27321S
Junior's (without) Code: 27320S

Level: Premier, elite and regional teams.

This Helix Top has a flattering, easy to wear design featuring a V-neck and stylish contrasting panels. You can set out to win in this high performance top.

- Scooped V-neck neck for an unrestricted fit.
- Sculpted silhouette and stretch fabric for improved fit.
- Capped sleeves and dropped back hem.
- Available with or without velcro attachments front and back for patch bib with court position.

Sublimated Examples



Design Code : 001



Design Code : 003



Design Code : 005

Sublimated Bottoms

The Gilbert skorts, skirts and shorts shown below are displayed with examples of sublimated printing. Any printed colour and design is possible, but where garments have pleats, the design must include a single solid colour over the pleats. Choose your own design or select one from the examples shown below.

Specifications

SIZES: Women's 6 - 18.
FIT STYLE: Available in regular fit only.
FABRICS: G-Pro Stretch 700.
Minimum Order Quantity: 12
Lead Time: 8 weeks from order acceptance.
 (see order procedures on page 30)

Elite Skorts



Code: 28850s

Level: Premier and elite teams.

- Gilbert Elite Skort delivers unbeatable comfort and support.
- Moisture control fabric to help keep you dry and comfortable.
 - Wide elasticated waistband for a comfortable, secure fit.
 - Pleats at hem for enhanced range of motion and style.
 - Flat-seam construction to minimise chafing.
 - Longer back length to suit all body shapes.

Sublimated Examples



Design Code : 001



Design Code : 003



Design Code : 005

Helix Skorts and Skirts



Women's Skort Code: 28893s
 Junior's Skort Code: 27289s
 Women's Skirt Code: 28894s
 Junior's Skirt Code: 27290s

Level: Premier, elite and regional teams.

Sporty meets feminine! the Helix Skirts and Skorts combine comfort and support with a great fit!

- Elastic waistband for a comfortable, secure fit.
- Wrap over design for enhanced range of motion.
- Flat-seam construction to minimise chafing.
- Longer back length to suit all body shapes.
- skort features inner short in matching fabric.

Sublimated Examples



Design Code : 004



Design Code : 005

Eclipse Shorts



Code: 27228s

Level: All levels.

Eclipse Shorts are a great addition to any team wardrobe, they are ideal for match play or training.

- Stretch fabric for added comfort in wear.
- Flat-seam construction to minimise chafing.
- Elastic waistband for a comfortable, secure fit.
- Cotton lined gusset.

Elite Dress - Stocked Item

Gilbert's Elite Range balances eye-catching style with high performance, sculpted shape and stretch fabric. Designed for premier and elite teams.

Level: Premier and elite teams.

Sizes: Women's 6 - 18.

Fit Style: Available in regular fit only.

Fabric: G Pro Stretch 705.

Available from stock in one week as shown. Your logo/sponsor's logo and number can be added and supplied in 3 weeks from sign-off.



Navy/White

Black/White

Red/White

Elite Tank Top - Stocked Item

Made to move with you as you cover the court, the Elite Tank Top features eye-catching style with sweat-wicking fabric to help keep you in top form.

Level: Premier and elite teams.

Sizes: Women's 6 - 18.

Fit Style: Available in regular fit only.

Fabric: G Pro Stretch 705.

Available from stock in one week as shown. Your logo/sponsor's logo and number can be added and supplied in 3 weeks from sign-off.



Navy/White

Black/White

Red/White

Elite Dress - Made To Order

Elite Dresses can be made to order in your chosen colours.

Level: Premier and elite teams.

Sizes: Women's 6 - 18.

Fit Styles: Available in regular fit or tall fit.

Fabric: G-Pro Stretch 700.

Minimum Order: 12

Lead Time: 8 weeks from order acceptance.
(see order procedures on page 30)



Regular Fit Code: 28851s
Tall Fit Code: 27247s

Elite Tank Top - Made To Order

Elite Tank Tops can be made to order in your chosen colours.

Level: Premier and elite teams.

Sizes: Women's 6 - 18.

Fit Styles: Available in regular fit or tall fit.

Fabric: G-Pro Stretch 700.

Minimum Order: 12

Lead Time: 8 weeks from order acceptance.
(see order procedures on page 30)



Regular Fit Code: 28852s
Tall Fit Code: 27251s

Please use the Colour Palette below to choose fabric colours for the panels on this garment.

ELITE DRESS COLOUR OPTIONS



Please use the Colour Palette below to choose fabric colours for the panels on this garment.

ELITE TANK TOP COLOUR OPTIONS



Elite Skorts - Stocked Item

Made with built-in shorts and fabric that pulls sweat away from the skin, the Gilbert Elite Skort delivers unbeatable comfort and support.

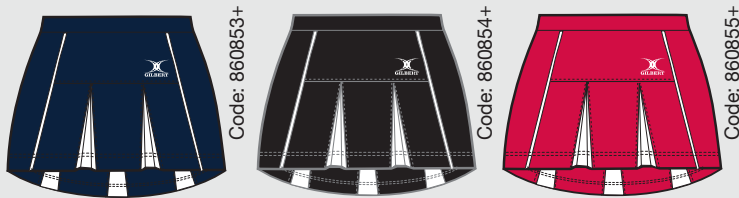
Level: Premier and elite teams.

Sizes: Women's 6 - 18.

Fit Style: Available in regular fit only

Fabric: G Pro Stretch 705.

Available from stock in one week as shown. Your logo/sponsor's logo and number can be added and supplied in 3 weeks from sign-off.



Navy/White

Black/White

Red/White

Flare Dress - Stocked Item

Sporty yet feminine, this dress looks and feels great! It features princess seams and flouncy skirt, for a great fit and comfortable feel.

Level: Premier, elite and regional teams.

Sizes: Women's 6 - 18.

Fit Style: Available in regular fit.

Fabric: G Pro Stretch 705.

Available from stock in one week as shown. Your logo/sponsor's logo and number can be added and supplied in 3 weeks from sign-off.



Navy

Black

Red

Elite Skorts and Skirts - Made To Order

Elite Skorts can be made to order in your chosen colours.

Level: Premier and elite teams.

Sizes: Women's 6 - 18.

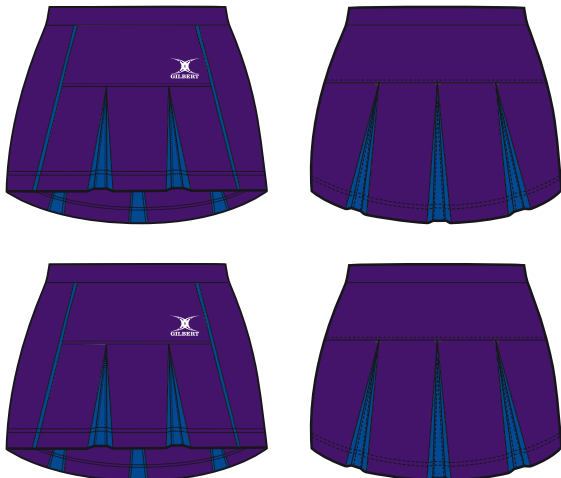
Fit Style: Available in regular fit only.

Fabric: G Pro Stretch 700.

Minimum Order: 12

Lead Time: 8 weeks from order acceptance.

(see order procedures on page 30)



Skort Code: 28853s
Skirt Code: 27282s

Flare Dress - Made To Order

Flare Dresses can be made to order in your chosen colours.

Level: Premier, elite and regional teams.

Sizes: Women's 6 - 18.

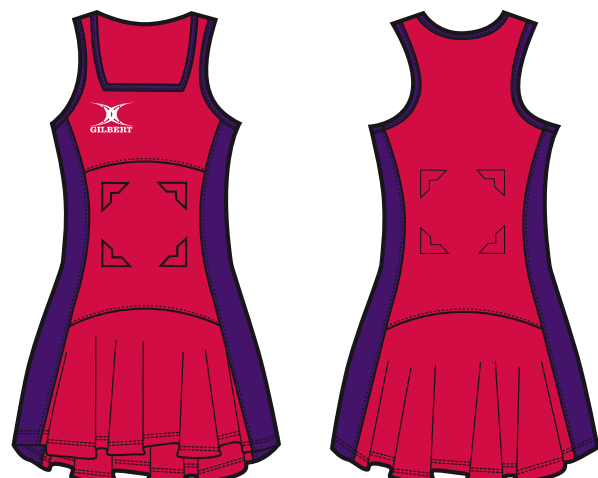
Fit Styles: Available in regular fit or tall fit.

Fabric: G Pro Stretch 700.

Minimum Order: 12

Lead Time: 8 weeks from order acceptance.

(see order procedures on page 30)



Regular Fit Code: 28933s
Tall Fit Code: 28934s

Please use the Colour Palette below to choose fabric colours for the panels on this garment.

ELITE SKORT COLOUR OPTIONS



Please use the Colour Palette below to choose fabric colours for the panels on this garment.

FLARE DRESS COLOUR OPTIONS



Eclipse II Dress - Stocked Item

Now in 12 colours offering unrivalled comfort and style for its wearers. Designed to look fresh and exciting. Ideal for county and social club teams.

Level: Regional, county and club teams.
Sizes: Women's 6 - 20
Fit Style: Available in regular fit only
Fabric: G Pro Stretch 705 / G-Lite 405

Available from stock in one week as shown. Your logo/sponsor's logo and number can be added and supplied in 3 weeks from sign-off.



Eclipse II Shorts - Stocked Item

These shorts are a great addition to any team wardrobe, ideal for match play or training.

Level: Regional, county and club teams.
Sizes: Women's 6 - 20.
Fit Style: Available in regular fit only.
Fabric: G Pro Stretch 705.

Available from stock in one week as shown. Your logo/sponsor's logo and number can be added and supplied in 3 weeks from sign-off.



Eclipse II Dress - Made To Order

Elite II Dresses can be made to order in your chosen colours. Your logo, sponsors logo and number can be added.

Level: Regional, county and club teams.
Sizes: Women's 6 - 20.
Fit Style: Available in regular fit or tall fit.
Fabric: G Pro Stretch 700 / G-Mesh 400.
Minimum Order: 12.

Lead Time: 8 weeks from order acceptance. (Order Information on Page 28)

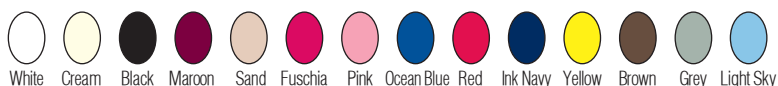


Please use the colours palettes below to choose fabric colours for the main body and contrast panels on this garment.

ECLIPSE DRESS II COLOUR OPTIONS



ECLIPSE DRESS II CONTRAST PANEL COLOUR OPTIONS



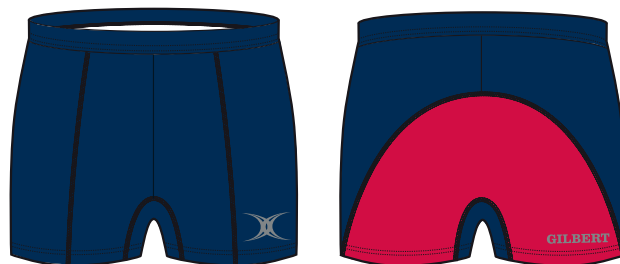
Eclipse II Shorts - Made To Order

Eclipse II Shorts can be made to order in your chosen colours. Your logo, sponsors logo and number can be added.

Level: Regional, county and club teams.
Sizes: Women's 6 - 20.
Fit Styles: Available on Regular Fit or tall fit.
Fabric: G Pro Stretch 700.

Minimum Order: 12

Lead Time: 8 weeks from order acceptance. (see order procedures on page 30)



Please use the Colour Palette below to choose fabric colours for the panels on this garment.

ECLIPSE II SHORTS COLOUR OPTIONS



Helix Top - Stocked Item

This top has a flattering, easy to wear design. Featuring a V-neck and stylish contrasting panels.

Level: Premier, elite and regional teams.

Sizes: Women's 6 -18.

Fit Style: Available in regular fit only.

Fabric: G Pro Stretch 705.

Available from stock in one week as shown. Your logo/sponsor's logo and number can be added and supplied in 3 weeks from sign-off.



Code: 860987+
(with velcro) Code: 860983+

Navy/White



Code: 860988+
(with velcro) Code: 860984+

Black/White



Code: 860989+
(with velcro) Code: 860985+

Red/White



Code: 860990+
(with velcro) Code: 860986+

Green/White

Helix Skirt/Skort - Stocked Item

Sporty meets feminine in the Helix Skirt! It provides unbeatable comfort and support combined with a great fit!

Level: Premier, elite and regional teams.

Sizes: Women's 6 -18.

Fit Style: Available in regular fit only.

Fabric: G Pro Stretch 705.

Available from stock in one week as shown. Your logo/sponsor's logo and number can be added and supplied in 3 weeks from sign-off.



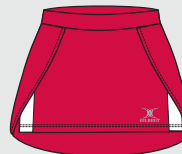
Navy/White

Skort Code: 860975+
Skirt Code: 860979+



Black/White

Skort Code: 860976+
Skirt Code: 860980+



Red/White

Skort Code: 860977+
Skirt Code: 860981+



Green/White

Skort Code: 860978+
Skirt Code: 860982+

Helix Top - Made To Order

Helix Tops can be made to order in your chosen colours. Your logo, sponsors logo and number can be added.

Level: Premier, elite and regional teams.

Sizes: Women's 6 -18 Junior's 5/6 - 11/12yrs.

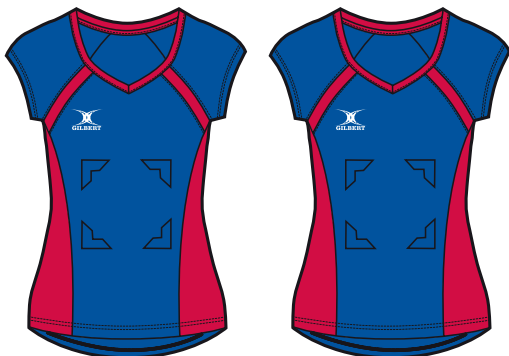
Fit Styles: Available in regular fit only.

Fabric: G Pro Stretch 700.

Minimum Order: 12

Lead Time: 8 weeks from order acceptance.

(see order procedures on page 30)



Women's Tall Fit (with velcro) Code: 28946s
Women's Tall Fit Code: 28945s
Women's (with velcro) Code: 28857s
Women's Code: 28854s
Junior's (with velcro) Code: 27232s
Junior's Code: 27231s

Please use the Colour Palette below to choose fabric colours for the panels on this garment.

HELIX TOP COLOUR OPTIONS



Helix Skirt/Skort - Made To Order

Helix Skirts/Skort can be made to order in your chosen colours. Your logo, sponsors logo and number can be added.

Level: Premier, elite and regional teams.

Sizes: Women's 6 -18.

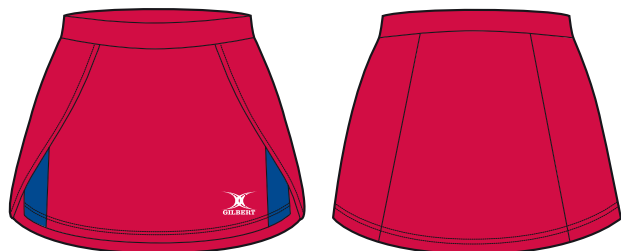
Fit Styles: Available on regular fit or tall fit.

Fabric: G Pro Stretch 700.

Minimum Order: 12

Lead Time: 8 weeks from order acceptance.

(see order procedures on page 30)



Women's Skort Code: 28855s
Women's Skirt Code: 28856s
Junior's Skort Code: 27332s
Junior's Skirt Code: 27333s

Please use the Colour Palette below to choose fabric colours for the panels on this garment.

HELIX SKORT/SKIRT COLOUR OPTIONS



Blaze Polo Shirt - Stocked Item

Smart, clean and classic this polo is perfect for on the court for matches or training. A soft, lightweight knit pulls moisture through to keep you cool and comfortable.

Level: All levels.

Sizes: Women's 6 - 20.

Fabric: G-Pique 605.

Available from stock in one week as shown. Your logo/sponsor's logo and number can be added and supplied in 3 weeks from sign-off.



Navy

Code: (with velcro) 860889+
Code: (without) 860885+



Black

Code: (with velcro) 860890+
Code: (without) 860886+



Red

Code: (with velcro) 860891+
Code: (without) 860887+



White

Code: (with velcro) 860892+
Code: (without) 860888+

Blaze Tank Top - Stocked Item

Keep your cool in this Blaze Tank Top. A soft, lightweight knit pulls moisture through to keep you cool and comfortable.

Level: All levels.

Sizes: Women's 6 - 20.

Fabric: G-Pique 605.

Available from stock in one week as shown. Your logo/sponsor's logo and number can be added and supplied in 3 weeks from sign-off.



Navy

Code: (with velcro) 860881+
Code: (without) 860877+



Black

Code: (with velcro) 860882+
Code: (without) 860878+



Red

Code: (with velcro) 860883+
Code: (without) 860879+



White

Code: (with velcro) 860884+
Code: (without) 860880+

Blaze Shirt - Stocked Item

Move with confidence in the Blaze shirt! It features a modern V-neck with turn down collar and the moisture management fabric will keep you cool and comfortable.

Level: All levels.

Sizes: Women's 6 - 20 Junior's 5/6 - 11/12yrs.

Fabric: G-Pique 605.

Available from stock in one week as shown. Your logo/sponsor's logo and number can be added and supplied in 3 weeks from sign-off.



Navy

Code: 860951+



Black

Code: 860952+



Red

Code: 860953+



White

Code: 860970+

Blaze Skorts - Stocked Item

The skorts soft inner shorts and elastic waistband add comfort and flattering seams that suit all body shapes.

Level: All levels.

Sizes: Women's 6 - 20 Junior's 5/6 - 11/12yrs.

Fabric: G-Pique 605.

Available from stock in one week as shown. Your logo/sponsor's logo and number can be added and supplied in 3 weeks from sign-off.



Navy

Skort Code: 860908+
Skirt Code: 860893+



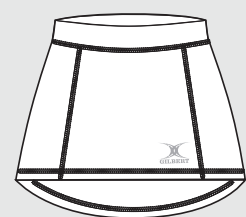
Black

Skort Code: 860909+
Skirt Code: 860894+



Red

Skort Code: 860910+
Skirt Code: 860895+



White

Skort Code: 860919+

Blaze Skirts - Stocked Item

Another classic design, the Blaze skirt's easy elastic waistband adds comfort and flattering seams that suit all body shapes. Available from stock in navy, black and red only.

Level: All levels

Sizes: Women's 6 - 20

Fabric: G-Pique 605

Vixen Range

Designed for all levels of play, the super stylish soft feel Vixen Hoodie and Pants both dazzle on the fashion front and provide excellent functionality. Sporty for the court and cute as a lifestyle piece, these garments offer great versatility for your wardrobe.



Vixen Jacket (page 22)



Vixen Pants (page 23)



Vixen Hoodie (page 22)



Vixen Shorts (page 23)

Vixen Short Sleeve Top (page 22)



Pro Team Range

The Pro Team collection will make any team feel first class. Influenced by our leading portfolio of players, this premier and elite professional range, with its technical fabrics and functional fit, will unite your team into an impressive force to be reckoned with.



Pro Team Track Top (page 19)



Pro Team Track Trousers (page 19)



Pro Team Hoodie (page 17)



Pro Team Polo Shirt (page 21)



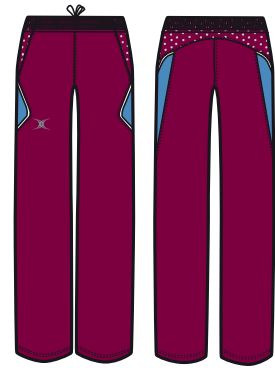
Pro Team Tee Shirt (page 21)

Storm Range

A first class collection, the Storm range has been created for all abilities by a leading team of specialist sportswear designers. Ideal for netballers, coaches and supporters, for professional performance both on and off the court.



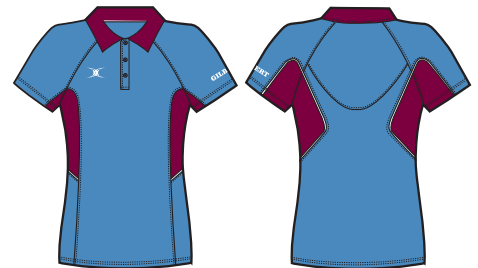
Blaze Track Top (page 20)



Blaze Track Trousers (page 20)



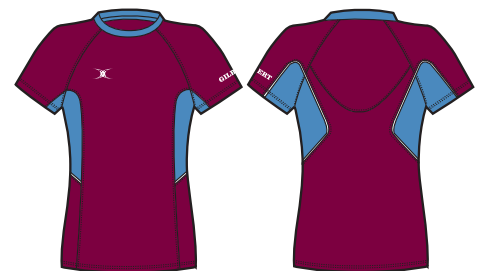
Storm Hoodie (page 17)



Matrix Polo Shirt (page 20)



Storm Shorts (page 23)



Matrix Tee Shirt (page 20)

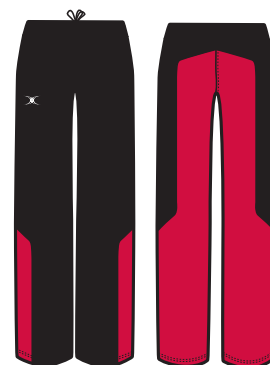


Revolution Range

Wearing the new ladies fit Revolution range, your team will dominate and leave a lasting impression on the opposition, before you even take to the court. This comprehensive collection offers comfort and style for all levels of play and provides your club with an outstanding teamwear solution.



Revolution Track Top (page 18)



Revolution Track Trousers (page 18)



Revolution Hoodie (page 17)



Vapour Polo Shirt (page 20)



Vapour Gym Shorts (page 23)



Vapour Tee Shirt (page 20)

Revolution 1/2 Zip Jacket - Stocked Item

Pack away shower proof jackets with 1/2 zip opening at neck with 2 zip pockets, adjustable cuffs, hem and hood.

Level: All levels.

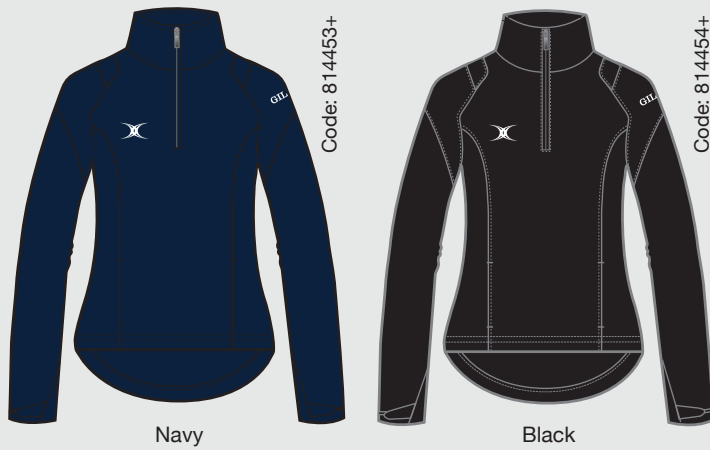
Sizes: Women's 6 - 18 Junior's 11/12yrs only.

Fit Style: Available in regular fit only.

Fabric: G-WP 505.

LIMITED STOCK LEFT

Available from stock in one week as shown. Your logo/sponsor's logo and number can be added and supplied in 3 weeks from sign-off.



Revolution Over Trousers - Stocked Item

Training trousers with knee-length zippers for ease of wear. Elasticated waist with drawcord and 2 pockets with velcro closure.

Level: All levels.

Sizes: Women's 6 - 18 Junior's 5/6 - 11/12yrs.

Fit Style: Available in regular fit only.

Fabric: G-WP 505.

Available from stock in one week as shown. Your logo/sponsor's logo and number can be added and supplied in 3 weeks from sign-off.



Revolution 1/2 Zip Jacket - Made To Order

These jackets can be made to order in your chosen colours.

Level: All levels.

Sizes: Women's 6 - 20 Junior's 5/6 - 11/12yrs.

Fit Style: Available in regular fit only.

Fabric: G-WP 500 Revolution.

Minimum Order: 12

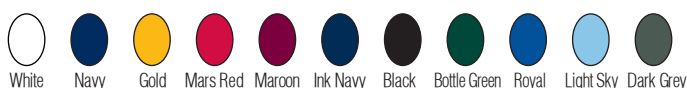
Lead Time: 8 weeks from order acceptance.
(see order procedures on page 30)

Womens Code: 27035s
Junior Code: 27085s



Please use the Colour Palette below to choose fabric colours for the panels on this garment.

REVOLUTION 1/2 ZIP JACKET COLOUR OPTIONS



Revolution Over Trouser - Made To Order

These trousers can be made to order in your chosen colours.

Level: All levels.

Sizes: Women's 6 - 20 Junior's 5/6 - 11/12yrs.

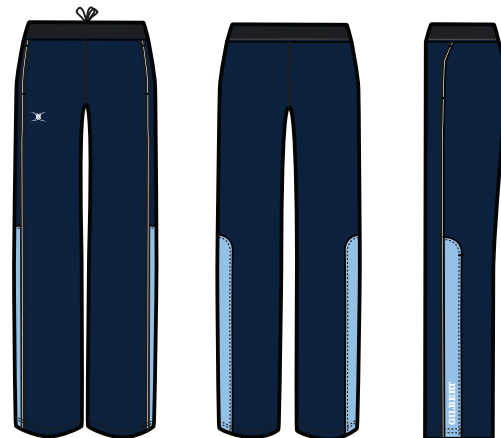
Fit Style: Available in regular fit only.

Fabric: G-WP 500 Revolution.

Minimum Order: 12

Lead Time: 8 weeks from order acceptance.
(see order procedures on page 30)

Womens Code: 27036s
Junior Code: 27038s



Please use the Colour Palette below to choose fabric colours for the panels on this garment.

REVOLUTION OVER TROUSER COLOUR OPTIONS



Vapour XP ½ Zip Jacket - Made To Order

A half-zip shower-resistant durable jacket made to compliment the Vapour XP Track Trousers.

These jackets can be made to order in your chosen colours.

Level: All levels.

Sizes: Women's 6 - 20 Junior's 5/6 - 11/12yrs.

Fit Style: Available in regular fit only.

Fabric: G-WP 500.

Minimum Order: 12

Lead Time: 8 weeks from order acceptance.
(see order procedures on page 30)



Womens Code: 27083s
Junior Code: 27085s

Please use the Colour Palette below to choose fabric colours for the panels on this garment.

Vapour XP Trouser - Made To Order

Elasticated waist with drawcord and knee length zip in a durable shower resistant fabric.

These trousers can be made to order in your chosen colours.

Level: All levels.

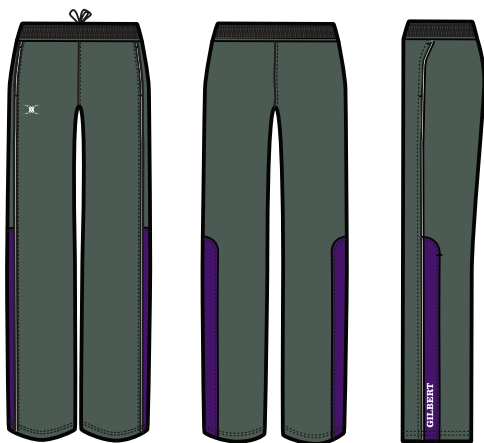
Sizes: Women's 6 - 20 Junior's 5/6 - 11/12yrs.

Fit Style: Available in regular fit only.

Fabric: G-WP 500.

Minimum Order: 12

Lead Time: 8 weeks from order acceptance.
(see order procedures on page 30)



Womens Code: 27084s
Junior Code: 27086s

Please use the Colour Palette below to choose fabric colours for the panels on this garment.

XP ½ ZIP JACKET/TROUSER COLOUR OPTIONS



Storm Shower Jacket - Made To Order

Breathable weather protection that optimizes body temperature while allowing heat and sweat to escape through evaporation. Internal hem cord lock adjustor helps to keep draughts out. Cuff adjusters to hold garment in place and 2 zipped pockets.

These jackets can be made to order in your chosen colours.

Level: All levels.

Sizes: Women's 6 - 18 Junior's 5/6 - 11/12yrs.

Fit Style: Available in regular fit only.

Fabric: G-WP 750.

Minimum Order: 12

Lead Time: 8 weeks from order acceptance.
(see order procedures on page 30)



Womens Code: 27074s
Junior Code: 27075s

Please use the Colour Palette below to choose fabric colours for the panels on this garment.

Pro Team Shower Jacket - Made To Order

Breathable, water resistant jacket with a specific panel design made to compliment the Pro Team range.

These jackets can be made to order in your chosen colours.

Level: All levels.

Sizes: Women's 6 - 20 Junior's 5/6 - 11/12yrs.

Fit Style: Available in regular fit only.

Fabric: G-WP 750.

Minimum Order: 12

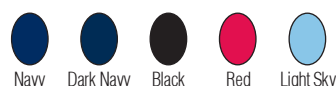
Lead Time: 8 weeks from order acceptance.
(see order procedures on page 30)



Womens Code: 27186s
Junior Code: 27193s

Please use the Colour Palette below to choose fabric colours for the panels on this garment.

STORM/PRO TEAM JACKET COLOUR OPTIONS



Revolution Hoodie - Made To Order

A comfortable hoodie with a soft-feel fabric for warmth. Kangaroo pouch pocket and piping detail. Designed to compliment the Revolution range.

These hoodies can be made to order in your chosen colours.

Level: All levels.

Sizes: Women's 6 - 20 Junior's 5/6 - 11/12yrs.

Fit Style: Available in regular fit only.

Fabric: G-Fleece 500.

Minimum Order: 12

Lead Time: 8 weeks from order acceptance.

(see order procedures on page 30)



Womens Code: 27180s
Junior Code: 27179s

Please use the Colour Palette below to choose fabric colours for the panels on this garment.

Pro Team Hoodie - Made To Order

A comfortable hoodie with soft cotton-feel fabric for warmth. Lined hood with drawcord (adults only), kangaroo pouch pocket and piping detail.

These hoodies can be made to order in your chosen colours.

Level: Premier and elite teams.

Sizes: Women's 6 - 20 Junior's 5/6 - 11/12yrs.

Fit Style: Available in regular fit only.

Fabric: G-Fleece 500.

Minimum Order: 12

Lead Time: 8 weeks from order acceptance.

(see order procedures on page 30)



Womens Code: 27188s
Junior Code: 27195s

Please use the Colour Palette below to choose fabric colours for the panels on this garment.

PRO TEAM / REVOLUTION HOODIE COLOUR OPTIONS



Vapour Hoodie - Made To Order

A comfortable hoodie with soft cotton-feel fabric for warmth. Lined hood with drawcord (adults only), kangaroo pouch pocket and piping detail.

These hoodies can be made to order in your chosen colours.

Level: All levels.

Sizes: Women's 6 - 20 Junior's 5/6 - 11/12yrs.

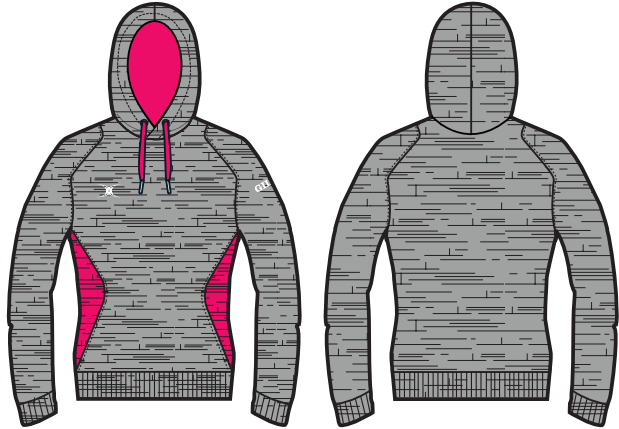
Fit Style: Available in regular fit only.

Fabric: G-Fleece 500.

Minimum Order: 12

Lead Time: 8 weeks from order acceptance.

(see order procedures on page 30)



Womens Code: 27131s
Junior Code: 27163s

Please use the Colour Palette below to choose fabric colours for the panels on this garment.

Storm Hoodie - Made To Order

A comfortable hoodie with soft cotton feel fabric for warmth. Lined hood with draw cord (adults only), kangaroo pouch pocket and piping detail.

These hoodies can be made to order in your chosen colours.

Level: All levels.

Sizes: Women's 6 - 20 Junior's 5/6 - 11/12yrs.

Fit Style: Available in regular fit only.

Fabric: G-Fleece 500.

Minimum Order: 12

Lead Time: 8 weeks from order acceptance.

(see order procedures on page 30)



Womens Code: 27073s
Junior Code: 27072s

Please use the Colour Palette below to choose fabric colours for the panels on this garment.

VAPOUR / STORM HOODIE COLOUR OPTIONS



Blaze Track Top - Made To Order

A stylish lightweight tracktop with mesh ventilation areas, internal hem adjustment, elasticated cuffs and reflective piping on back panels. These track tops can be made to order in your chosen colours.

Level: All levels.

Sizes: Women's 6 - 18.

Fit Styles: Available in regular, tall and extra tall fit.

Fabric: G-Com 700 / G-Lite 500.

Minimum Order: 12

Lead Time: 8 weeks from order acceptance.



Regular Fit Code: 28935s
Tall Fit Code: 28936s
Extra Tall Fit Code: 27229s

Please use the colours palettes below to choose fabric colours for the main body and contrast panels on this garment.

Blaze Track Trousers - Made To Order

Designed to compliment the blaze track top, these track trousers can be made to order in your chosen colours.

Level: All levels.

Sizes: Women's 6 - 18.

Fit Styles: Available in regular, tall and extra tall fit.

Fabric: G-Com 700 / G-Lite 500.

Minimum Order: 12

Lead Time: 8 weeks from order acceptance.



Regular Fit Code: 28937s
Tall Fit Code: 28938s
Extra Tall Fit Code: 27230s

Please use the Palettes below to choose fabric colours for this garment.

BLAZE TRACK TOP / TROUSER MAIN PANEL OPTIONS



BLAZE TRACK TOP / TROUSER CONTRAST PANEL OPTIONS



Revolution Track Top - Made To Order

A full-zip track top with a soft-feel lightweight fabric for comfort. Designed to wear with Revolution Track Trousers.

These track tops can be made to order in your chosen colours.

Level: All levels.

Sizes: Women's 6 - 18 Junior's 5/6 - 11/12yrs.

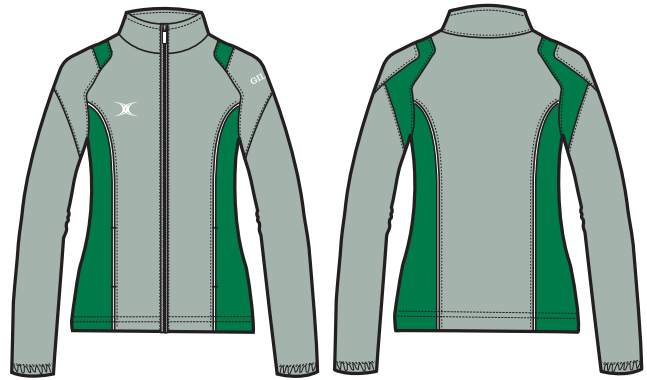
Fit Styles: Available in regular and tall fit.

Fabric: G-Com 700.

Minimum Order: 12

Lead Time: 8 weeks from order acceptance.

(see order procedures on page 30)



Womens Code: 27132s
Junior Code: 27164s

Please use the Colour Palette below to choose fabric colours for the panels on this garment.

Revolution Track Trousers - Made To Order

Elasticated waist and drawcord and knee-length zippers in a soft-feel lightweight fabric. Designed to be worn with Revolution Track Top.

These track trousers can be made to order in your chosen colours.

Level: All levels.

Sizes: 6 - 18 Junior's: 5/6 - 11/12yrs.

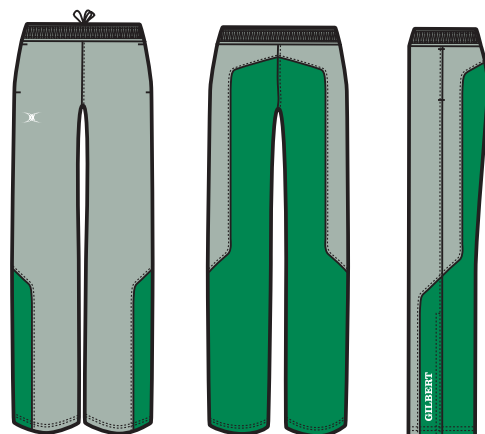
Fit Styles: Available in regular and tall fit.

Fabric: G-Com 700.

Minimum Order: 12

Lead Time: 8 weeks from order acceptance.

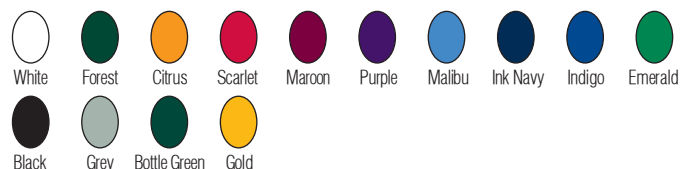
(see order procedures on page 30)



Womens Code: 27133s
Junior Code: 27165s

Please use the Colour Palette below to choose fabric colours for the panels on this garment.

REVOLUTION TRACK TOP / TROUSER COLOUR OPTIONS



Pro Team Track Top - Made To Order

A full-zip track top designed to compliment the Pro Team Track Trouser in a soft-feel lightweight fabric for comfort.

These track tops can be made to order in your chosen colours.

Level: Premier and elite teams.

Sizes: Women's 6 - 18 Junior's 5/6 - 11/12yrs.

Fit Style: Available in regular Only.

Fabric: G-Com 700.

Minimum Order: 12

Lead Time: 8 weeks from order acceptance.

(see order procedures on page 30)



Please use the Colour Palette below to choose fabric colours for the panels on this garment.

Pro Team Track Trouser - Made To Order

Elasticated waist and drawcord and knee-length zippers in a soft-feel lightweight fabric. Designed to be worn with the Pro Team Track Top.

These track trousers can be made to order in your chosen colours.

Level: Premier and elite teams.

Sizes: Women's 6 - 18 Junior's 5/6 - 11/12yrs.

Fit Style: Available in regular fit only.

Fabric: G-Com 700.

Minimum Order: 12

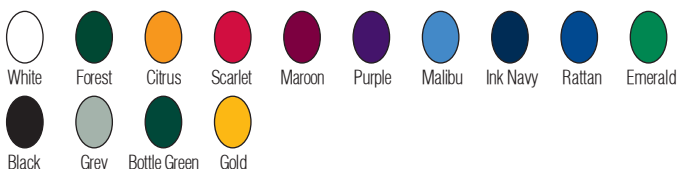
Lead Time: 8 weeks from order acceptance.

(see order procedures on page 30)



Please use the Colour Palette below to choose fabric colours for the panels on this garment.

PRO TEAM TRACK TOP / TROUSER COLOUR OPTIONS



Synergie Track Trousers - Stocked Item

Training trousers with long length zipper to hip for ease of wear. Cotton Jersey lining to knee for comfort, elasticated waist with drawcord and 2 zipped pockets.

Level: All levels.

Sizes: Women's 6 - 18.

Fit Style: Available in regular fit only.

Fabric: G-Com 505.

Available from stock in one week as shown. Your logo/sponsor's logo and number can be added and supplied in 3 weeks from sign-off.



Synergie Track Trousers - Made To Order

These trousers can be made to order in your chosen colours.

Level: All levels.

Sizes: Women's 6 - 20 Junior's 5/6 - 11/12yrs.

Fit Style: Available in regular fit only.

Fabric: G-Com 500.

Minimum Order: 12

Lead Time: 8 weeks from order acceptance.

(see order procedures on page 30)



Please use the Colour Palette below to choose fabric colours for the panels on this garment.

SYNERGIE TRACK TROUSER COLOUR OPTIONS



Vapour Polo Shirt - Made To Order

Manufactured from performance fabrics with soft-feel and moisture management properties to keep you cool.

These polo shirts can be made to order in your chosen colours.

Level: All levels.

Sizes: Women's 6 - 18 Junior's 5/6 - 11/12yrs.

Fit Style: Available in regular fit only.

Fabric: G-Lite 600.

Minimum Order: 12

Lead Time: 8 weeks from order acceptance.
(see order procedures on page 30)



Women's Code: 27129s
Junior's Code: 28960s

Please use the Colour Palette below to choose fabric colours for the panels on this garment.

Vapour Tee Shirt - Made To Order

Moisture-controlling materials allow air to flow close to the skin and draw heat away from the body.

These tee shirts can be made to order in your chosen colours.

Level: All levels.

Sizes: Women's 6 - 18 Junior's 5/6 - 11/12yrs.

Fit Style: Available in regular fit only.

Fabric: G-Lite 600.

Minimum Order: 12

Lead Time: 8 weeks from order acceptance.
(see order procedures on page 30)



Women's Code: 27130s
Junior's Code: 28961s

Please use the Colour Palette below to choose fabric colours for the panels on this garment.

VAPOUR POLO / TEE SHIRT COLOUR OPTIONS



Matrix Polo Shirt - Made To Order

Moisture controlling materials allow air to flow close to the skin and draw heat away from the body. The shaped panels contour the body for great fitting garment. Smart 3 button placket.

These polo shirts can be made to order in your chosen colours.

Level: Premier, elite and regional teams.

Sizes: Women's 6 - 18 Junior's 5/6 - 11/12yrs.

Fit Style: Available in regular fit only.

Fabric: G-Lite 600.

Minimum Order: 12

Lead Time: 8 weeks from order acceptance.
(see order procedures on page 30)



Women's Code: 27069s
Junior's Code: 28956s

Please use the Colour Palette below to choose fabric colours for the panels on this garment.

Matrix Tee Shirt - Made To Order

A classic crew neck for a comfortable fit. The shaped panels contour the body for great fitting garment.

These tee shirts can be made to order in your chosen colours.

Level: Premier, elite and regional teams.

Sizes: Women's 6 - 18 Junior's 5/6 - 11/12yrs.

Fit Style: Available in regular fit only.

Fabric: G-Lite 600.

Minimum Order: 12

Lead Time: 8 weeks from order acceptance.
(see order procedures on page 30)



Women's Code: 27070s
Junior's Code: 28958s

Please use the Colour Palette below to choose fabric colours for the panels on this garment.

MATRIX POLO / TEE SHIRTS COLOUR OPTIONS



Pro Team Polo Shirt - Made To Order

A Lightweight polo shirt with unique panelling made from moisture management materials. 3 button placket and collar for UV protection.

These polo shirts can be made to order in your chosen colours.

Level: Premier and elite teams.

Sizes: Women's 6 - 18 Junior's 5/6 - 11/12yrs.

Fit Style: Available in regular fit only.

Fabric: G-Lite 600.

Minimum Order: 12

Lead Time: 8 weeks from order acceptance.

(see order procedures on page 30)



Womens Code: 27191s
Junior Code: 27198s

Please use the Colour Palette below to choose fabric colours for the panels on this garment.

Pro Team Tee Shirt - Made To Order

A lightweight tee shirt with unique panelling made from moisture management materials. Designed to compliment the Pro Team range.

These tee shirts can be made to order in your chosen colours.

Level: Premier and elite teams.

Sizes: Women's 6 - 18 Junior's 5/6 - 11/12yrs.

Fit Style: Available in regular fit only.

Fabric: G-Lite 600.

Minimum Order: 12

Lead Time: 8 weeks from order acceptance.

(see order procedures on page 30)



Womens Code: 27192s
Junior Code: 27199s

Please use the Colour Palette below to choose fabric colours for the panels on this garment.

PRO TEAM POLO / TEE SHIRT COLOUR OPTIONS



Vibe Polo Shirt - Made To Order

A high performance garment featuring stylish mesh panelling to aid moisture management and ventilation.

These polo shirts can be made to order in your chosen colours.

Level: Premier, elite and regional teams.

Sizes: Women's 6 - 18.

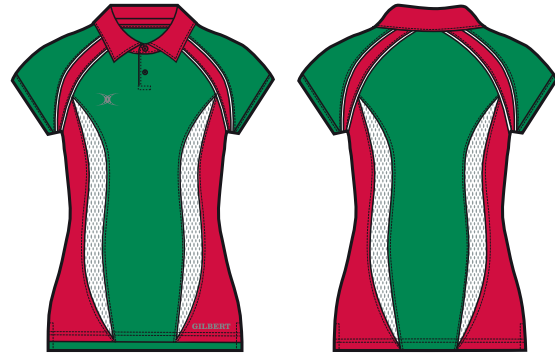
Fit Style: Available in regular fit only.

Fabric: G-Lite 600 / G-Mesh 400.

Minimum Order: 12

Lead Time: 8 weeks from order acceptance.

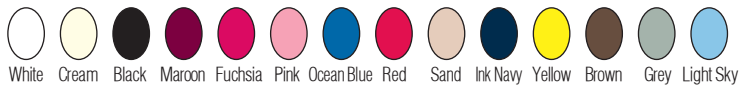
(see order procedures on page 30)



Womens Code: 28454s
Junior Code: 27218s

Please use the Colour Palette below to choose fabric colours for the contrast panels on this garment.

VIBE POLO CONTRAST PANEL COLOUR OPTIONS



Netball Vest - Made To Order

A lightweight sleeveless vest designed to minimise perspiration.

These vests can be made to order in your chosen colours.

Level: All levels.

Sizes: Women's 6 - 18.

Fit Style: Available in regular fit only.

Fabric: G-Lite 600.

Minimum Order: 12

Lead Time: 8 weeks from order acceptance.

(see order procedures on page 30)



Womens Code: 27067s

Please use the Colour Palette below to choose fabric colours for the panels on this garment.

VIBE POLO SHIRT/NETBALL VEST MAIN BODY COLOUR OPTIONS



Vixen Jacket - Stocked Item

Train through whatever Mother Nature throws your way in the Vixen Jacket. This jacket offers breathable, lightweight wind and rain protection.

Level: All levels.

Sizes: Women's 6 - 18.

Fit Styles: Available in regular fit or tall fit.

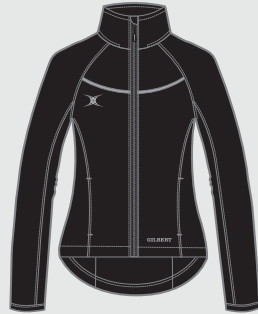
Fabric: G-WP 605.

Available from stock in one week as shown. Your logo/sponsor's logo and number can be added and supplied in 3 weeks from sign-off.



Navy

Regular Fit Code: 860897+
Tall Fit Code: 860912+



Black

Regular Fit Code: 860896+
Tall Fit Code: 860911+

Elite Warm Up Top - Stocked Item

A versatile layer to keep you covered with contoured seams that form to the body's natural lines. Ideal for warm up and post match wear.

Level: All levels.

Sizes: Women's 6 - 18.

Fit Styles: Available in regular and tall fit.

Fabric: G-Fleece Stretch 805.

Available from stock in one week as shown. Your logo/sponsor's logo and number can be added and supplied in 3 weeks from sign-off.



Navy Marl

Regular Fit Code: 860859+
Tall Fit Code: 860917+



Black Marl

Regular Fit Code: 860860+
Tall Fit Code: 860918+

Vixen Leggings - Stocked Item

Wear them as a base layer or on their own. In a sleek, zero-distractions design that offers support in a snug fit.

Level: All levels.

Sizes: Women's 6 - 18.

Fit Style: Available in regular fit only.

Fabrics: G-Base 705.

Available from stock in one week as shown. Your logo/sponsor's logo and number can be added and supplied in 3 weeks from sign-off.



Black

Code: 860847+



Navy

Code: 860848+

Vixen Training Top - Stocked Item

Endorsed by International athletes, such as Tamsin Greenway, these lightweight garments won't weigh you down when warming up.

Level: All levels.

Sizes: Women's 6 - 18.

Fit Style: Available in regular fit only.

Fabrics: G-Pro Stretch 705.

Available from stock in one week as shown. Your logo/sponsor's logo and number can be added and supplied in 3 weeks from sign-off.



Black

Code: 860901+



Navy

Code: 860902+



Black/Red

Code: 860907+

Padded Gilet - Stocked Item

This versatile, lightweight gilet is perfect for banishing a breeze. Simple in design, but remarkably effective when it comes to keeping out the cold.

Level: All levels.

Sizes: Women's 6 - 18.

Fit Style: Available in regular fit only.

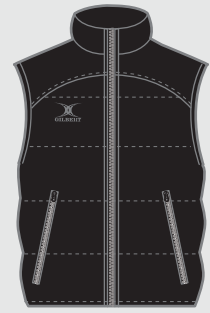
Fabric: G-Quilt 605.

Available from stock in one week as shown. Your logo/sponsor's logo and number can be added and supplied in 3 weeks from sign-off.



Navy

Code: 860211+



Black

Code: 860241+

Vixen Pants - Stocked Item

Sporty for the court and cute as a lifestyle piece, the Vixen pants offer great versatility for your wardrobe.

Level: All levels.

Sizes: Women's 6 - 18.

Fit Style: Available in regular and tall fit.

Fabric: G-Fleece Stretch 605.

Available from stock in one week as shown. Your logo/sponsor's logo and number can be added and supplied in 3 weeks from sign-off.



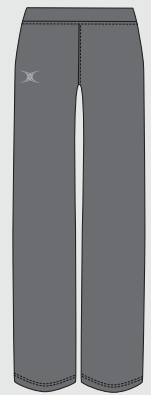
Navy

Regular Fit Code: 860964+
Tall Fit Code: 860967+



Black

Regular Fit Code: 860963+
Tall Fit Code: 860966+



Grey

Regular Fit Code: 860965+
Tall Fit Code: 860968+

Vixen Hoodie - Stocked Item

Sporty for the court and cute as a lifestyle piece, the Vixen Hoodie offers great versatility for your wardrobe.

Level: All levels.

Sizes: Women's 6 - 18.

Fit Styles: Available in regular fit or tall fit.

Fabric: G-Fleece Stretch 605.

Available from stock in one week as shown. Your logo/sponsor's logo and number can be added and supplied in 3 weeks from sign-off.



Navy

Regular Fit Code: 860899+
Tall Fit Code: 860914+



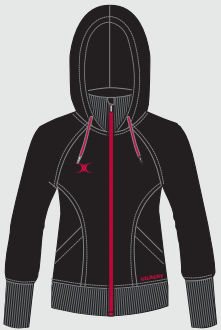
Black

Regular Fit Code: 860898+
Tall Fit Code: 860913+



Grey

Regular Fit Code: 860900+
Tall Fit Code: 860915+



Black/Red

Regular Fit Code: 860906+
Tall Fit Code: 860916+

Vixen Shorts - Stocked Item

The shorts regular fit and wide elastic waistband provide the comfort and manoeuvrability you need while training.

Level: All levels.

Sizes: Women's 6 - 18.

Fit Style: Available in regular only.

Fabric: G-Com 405.

Available from stock in one week as shown. Your logo/sponsor's logo and number can be added and supplied in 3 weeks from sign-off.



Navy

Code: 860905+



Black

Code: 860904+

Leisure Shorts - Stocked Item

Lightweight stretch fabric shorts with mesh side leg panels for added ventilation, two pockets, elasticated waistband and drawcord.

Level: All levels.

Sizes: Women's 6 - 18.

Fit Style: Available in regular only.

Fabric: G-Com 505.

Available from stock in one week as shown. Your logo/sponsor's logo and number can be added and supplied in 3 weeks from sign-off.



Navy

Code: 814469+



Black

Code: 814468+

Storm Shorts - Made To Order

Lightweight with ventilation zones to assist with temperature regulation. Inner mesh briefs and elasticated waist with drawcord (Drawcord adults only). Storm Shorts can be made to order in your chosen colours.

Level: All levels.

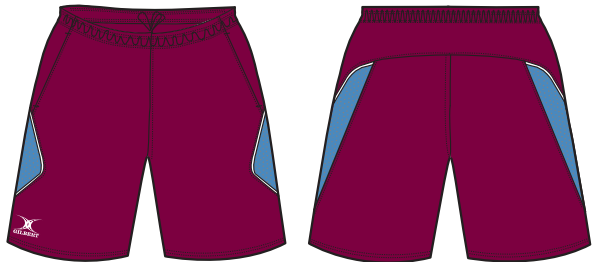
Sizes: Women's 6 - 20 Junior's 5/6 - 11/12 Yrs.

Fabric: G-Com 700 / G-Mesh.

Minimum Order: 12

Lead Time: 8 weeks from artwork sign-off.

(See order information on page 30).



Women's Code: 28959s
Junior's Code: 28188s

Please use the colours palettes below to choose fabric colours for the main body and contrast panels on this garment..

STORM SHORTS MAIN BODY COLOUR OPTIONS



STORM SHORTS CONTRAST PANEL COLOUR OPTIONS



Vapour Gym Shorts - Made To Order

Made from lightweight stretch fabric with elasticated waist and drawcord. Vapour Gym Shorts can be made to order in your chosen colours.

Level: All levels.

Sizes: Women's 6 - 20 Junior's 5/6 - 11/12 Yrs.

Fabric: G-Com 500 / G-Lite 700.

Minimum Order: 12

Lead Time: 8 weeks from artwork sign-off



Women's Code: 27127s
Junior's Code: 27159s

Please use the colours palettes below to choose fabric colours for the main body and contrast panels on this garment.

VAPOUR SHORTS MAIN BODY COLOUR OPTIONS



VAPOUR SHORTS CONTRAST PANEL COLOUR OPTIONS



Luggage

Minimum Order Quantity: 15

Lead Time: 8 weeks from order acceptance.

(see order procedures on page 30)

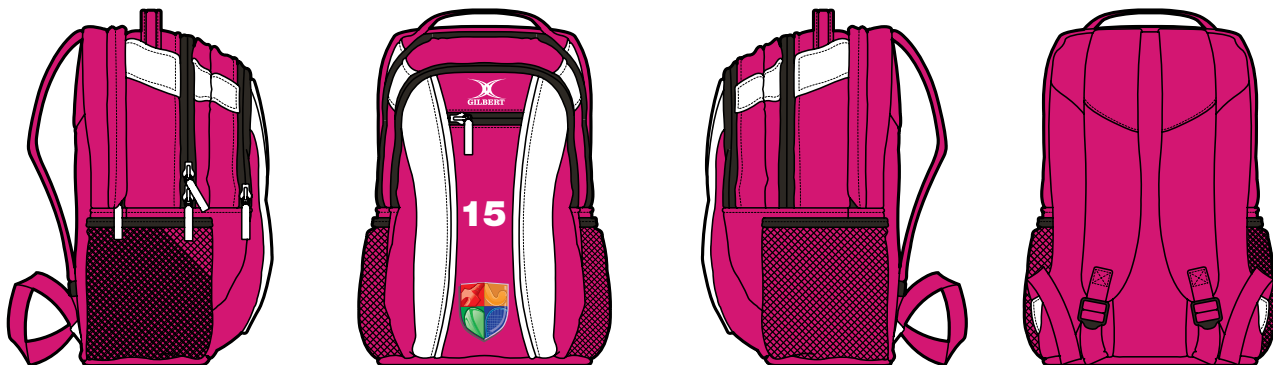
Gilbert Luggage can be made to order in your chosen colours. Your logo, sponsors logo and number can be added.

Club Player Rucksack - Made To Order

A stylish multi compartment rucksack with 3 well sized compartments, a padded laptop section and front organiser sections.

SIZE: H:47cm x W:20cm x D:33cm.

FABRIC: 1200 Ripstop / Durable Polyester Twill.



Code: 28300s



Club and Sponsor logo or squad number can be printed on the bags in the positions shown for an additional charge.

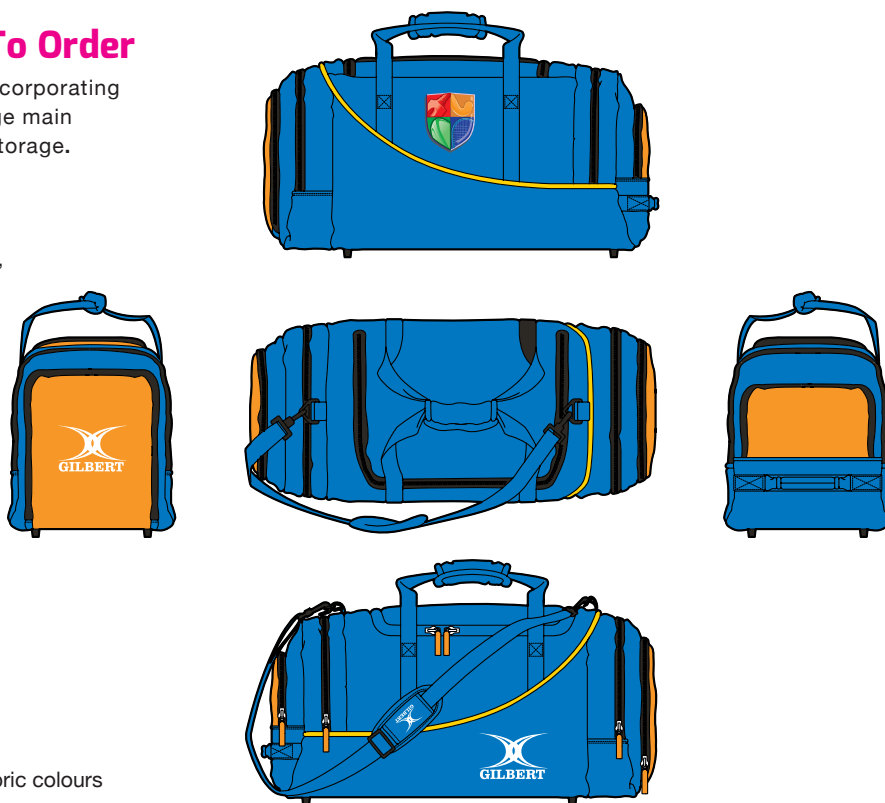
Please use the colour palettes below to choose fabric colours for the panels, zips and piping on this luggage.

Club Player Holdall - Made To Order

Ideal luggage for junior and school players. Incorporating an end pocket for shoes and wet gear, a large main compartment and side pocket for additional storage.

SIZE: H:27cm x W:57cm x L:27cm,

FABRIC: 1200 Ripstop / Durable Polyester Twill,



Code: 28300s



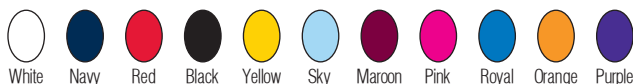
Club and Sponsor logo or squad number can be printed on the bags for an additional charge.

Please use the colour palettes below to choose fabric colours for the panels, zips and piping on this luggage.

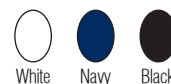
PANEL COLOURS



PIPING COLOURS



ZIP COLOURS



PLEASE NOTE: These colours are not matched to the clothing fabric colours.

Custom Balls

Minimum Order Quantity: 25
Lead Time: 10 weeks by Air freight
 14 weeks by sea freight from order acceptance.

Gilbert Netballs can be made to order in your chosen colours. Your logo, sponsors logo and number can be added.

Spectra Match Ball - Made To Order

High quality match/training ball suitable for use on any surface.

SIZES: Available in size 4 or 5

PANEL COLOURS

The complete panels of the Spectra Match Ball can be printed in any solid colour you like. For example the panels could be printed entirely pink with the 'wave design' printed over the top. This can be achieved but is inadvisable for balls that are to be used on court because the ink affects the grip on the surface of the balls.

PANEL COLOURS

The 'wave design' on the Spectra Ball panels can be printed in any solid colour you like. Please choose 1 - 3 colours for your design.

LOGO COLOURS

Up to 8 solid colours can be chosen to print your logo in the position shown on the ball opposite.



The example shown here has been printed with 3 colours.

Size 5 Code: 28308s
 Size 4 Code: 28306s

Please choose 1 - 3 colours for the 'wave design' and up to a maximum of 8 colours to print your logo, or sponsors logo in the position shown.

Pulse Training Ball - Made To Order

High quality match/training ball suitable for use on any surface.

SIZES: Available in size 4 or 5.

PANEL COLOURS

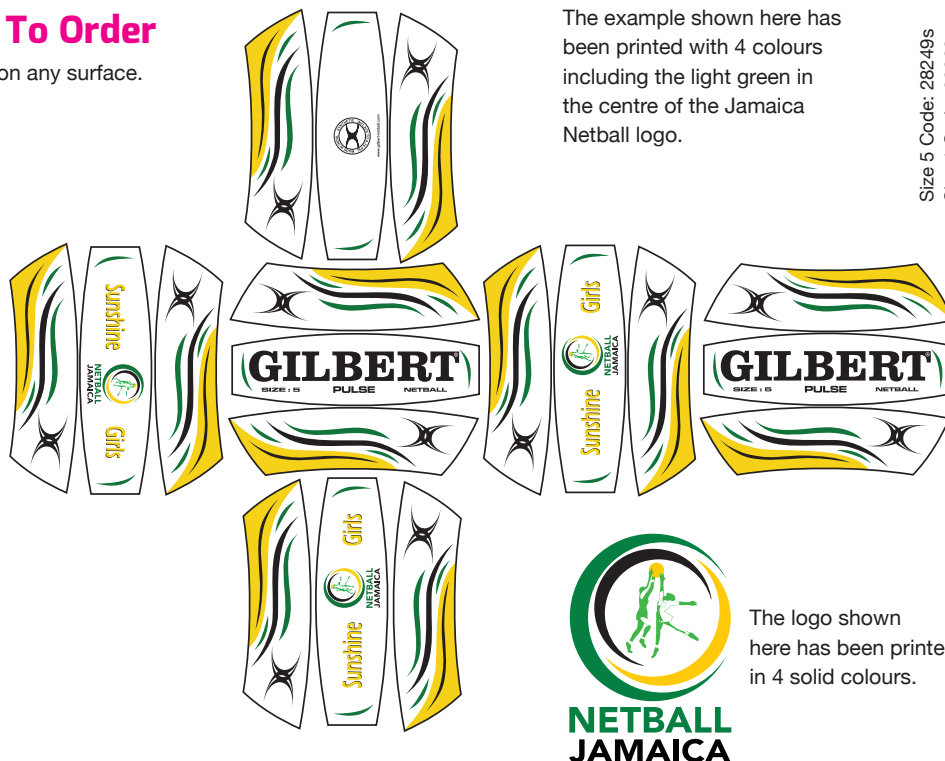
The complete panels of the Pulse Match Ball can be printed in any solid colour you like. For example the panels could be printed entirely pink with the 'wave design' printed over the top. This can be achieved but is inadvisable for balls that are to be used on court because the ink affects the grip on the surface of the balls.

PANEL COLOURS

The 'wave design' on the Pulse Ball panels can be printed in any solid colour you like. Please choose 1 - 3 colours for your design.

LOGO COLOURS

Up to 8 solid colours can be chosen to print your logo in the position shown on the ball opposite.



The example shown here has been printed with 4 colours including the light green in the centre of the Jamaica Netball logo.

Size 5 Code: 28249s
 Size 4 Code: 28663s

Please choose 1 - 3 colours for the 'wave design' and up to a maximum of 8 colours to print your logo, or sponsors logo in the position shown.

Bibs

Hi 5 Bibs

FEATURES:

- Set of eight.
- Performance breathable fabric.
- Includes GS, GA, C, GD, GK, TK (Timekeeper), S (Scorer) and CPM (Centre Pass Marker).

Sizes: One size only.

Colours: Black, Navy, Sky, Royal, Red, Green, Pink, Purple, White or Amber.



Code: 86032505

Purple

Bibs

FEATURES:

- Set of seven.
- Performance fabric.
- Breathable eyelet polyester.

Sizes: S (6-10) M (10-14) L (14-20)

Colours: Black, Navy, Sky, Royal, Red, Green, Pink, Purple, White or Amber



Code: 860339+

Purple



Code: 86031805

Black



Code: 86032405

Pink



Code: 86032305

Green



Code: 860331+

Black



Code: 860338+

Pink



Code: 860336+

Green



Code: 86032105

Royal



Code: 86032205

Red



Code: 86032005

Sky



Code: 860334+

Royal



Code: 860335+

Red



Code: 860333+

Sky



Code: 86031905

Navy



Code: 86034105

Amber



Code: 86032605

White



Code: 860332+

Navy



Code: 860337+

Amber



Code: 860340+

White

Reversible Bibs

FEATURES:

- Set of seven.
- Performance breathable fabric.
- Two colour options for easy organization of teams.

Sizes: S (6-10) M (10-14) L (14-20).

Colours: Amber/Black, Green/Black, Red/Navy or Sky/Navy.



Code: 860327+

Sky/Navy



Code: 860328+

Red / Navy



Code: 860329+

Green/Black



Code: 860330+

Amber/Black

Patch Bibs

FEATURES:

- Fabric to match any item in our matchwear range with velcro hooks and loops.
- Colour-matched velcro.
- Sold in sets of 14.

Sizes: One size only

Colours: Fabric Colour/Print Colour
Black/White, Navy/White, Green/White, Purple/White, Red/White, Royal/White, White/Navy, Black/Gold, Black/Pink, Black/Red, Navy/Sky, Maroon/White or Green/Gold.



Code: 86024205

Purple / White



Code: 86023705

Black / White



Code: 86024505

Black / Pink



Code: 86024005

Green / White



Code: 86023805

Navy / White



Code: 86023905

Red / White



Code: 86024305

Royal / White



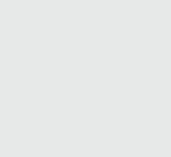
Code: 86024605

Black / Red



Code: 86024705

Black / Gold



Code: 86024905

Green / Gold



Code: 86025005

Navy / Sky



Code: 86024805

Maroon / White



Code: 86024405

White / Navy

Courtside Equipment

These INF standard post protectors can be made to order in our factory from the highest quality materials. For a simple design you can choose a base colour from our stock vinyls shown below. Should you wish to include more colour, we can produce any design using a state of the art digital printing process. Our team will guide you through your choices.

All post protectors are made with high density foam covered with PVC in a high quality finish that can be wiped clean.

Post Protectors - Made To Order

These post protectors can be made to order in your chosen colours. Your logo or sponsors logo can be added.

Level: All

Available Widths: 50mm, 65mm or 80mm diameter.

Height: 2.86 metres only.

Fabric: High density foam covered PVC

Minimum Order: 1

Lead Time: 6 weeks from order acceptance.

Lead times may vary at busy periods.

(see order procedures on page 30)

Please use the Colour Palette below to choose vinyl colour for your post protectors.

Vinyl Colours and Digital Printing

We can print your club, school or tournament colours in any design. We hold a range of vinyl colours (shown below) on which we can overprint club, school or sponsor logos. All printing will incur an extra charge.

Club Crest & Logos

All artwork for club crests/logos and sponsors logos must be supplied in digital format, preferably vector EPS files or JPEG format.

FOR FURTHER DETAILS PLEASE CONTACT YOUR SALES REPRESENTATIVE OR CALL:

01580 883120

VINYL COLOUR OPTIONS



Chioma Matthews
Gilbert Ambassador



50, 60 and 80mm diameter poles are available
Price dependant on colour choices and/or post diameter

Accessories



Code: 86880050

Coaching Manual

A4 sized folder with magnetic netball court board and magnets Included

- 16 Magnets - 8 Blue and 8 red.
- Dry Erase Pen with eraser.
- 20 Page notebook and pen.



Marking Cone Carrier Code: 89010200
 Green Cones Code: 89010301
 Red Cones Code: 89010302
 White Cones Code: 89010303
 Yellow Cones Code: 89010304

Marking Cones/Carrier

FEATURES

- Fluorescent EVA non-shatter safety cones.
- Available colours - green, red, white and yellow.
- Metal carrier for easy storage.
- Holds up to 50 cones.



Court Markers

FEATURES

- Non Slip Rubber Marker.
- Ideal for on court drills both indoors and outside.
- Durable heavy duty design.

Red Code: 86880045
 White Code: 86880046
 Yellow Code: 86880047
 Green Code: 86880048



Water Bottle Carrier

- Traditional style carrier.
- 6 bottle capacity.



Water Bottle

- 75cl bottle with sports cap.

Carrier Code: 89011800

Water Bottle Code: 89011900



Code: 86880030

Tactics Board

- A3+ size, dry-wipe board.
- Includes dry-wipe pens, board rubber and magnetic markers.



Pressure Gauge

Code: 89009100



Adaptors

- Twin Pack

Code: 89009000



Squeezy Whistle

Code: 86880044



Quicker Ball Pump

Code: 89009200



Hand Held Whistle

Code: 86880031



Whistle & Lanyard

Code: 89009300



Stirrup Pump

Code: 89010500

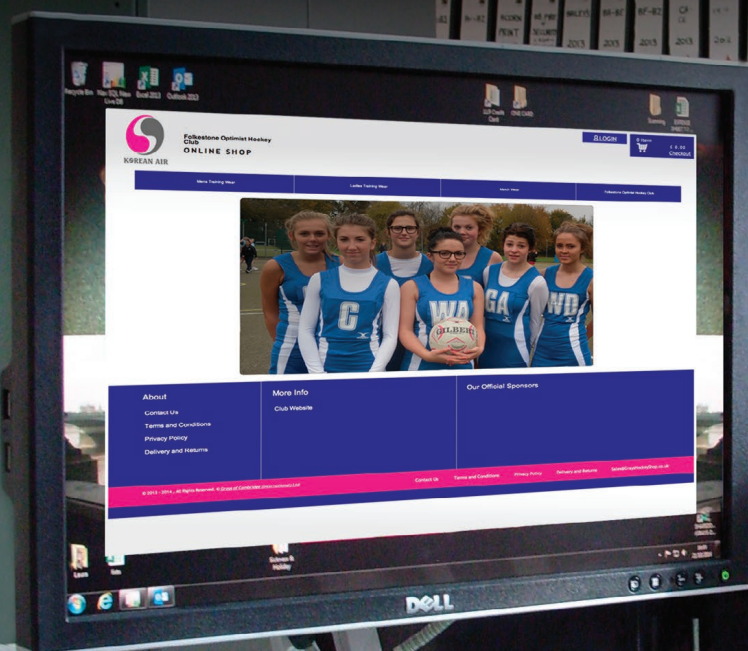
Your own Kit website!

Shop through your own website

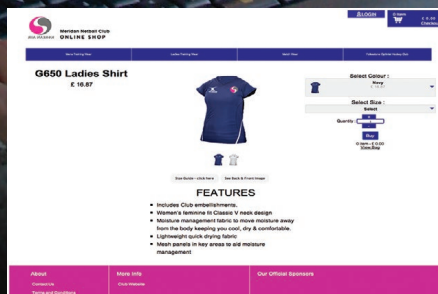
To support your Club or School, and to help relieve the burden of kit administration, Gilbert will build you a club or school kit website absolutely free.

Your club members and parents can view your chosen range and order direct from us. We will look after everything.

Please ask your Gilbert contact or telephone: **01580 883120**



- A free service from Gilbert
- Accessed via your own website with club /school colours and logos.
- Your chosen range shown.
- All payments taken care off.
- Product dispatched within days.



Order Procedures

Below we have laid out clearly the processes you will experience and the requirements that you will need to fulfil in order for us to quickly and accurately action your teamwear order. Each option has different complexities and requirements, which are detailed below. Throughout the process, your local Gilbert representative and the design team will make sure that you are kept up to speed at every stage of the production process prior to delivery.

For more detailed information, to place an order or to discuss a specific requirement call 01580 883120.

OPTION 1

SUBLIMATED TEAMWEAR

Our team will work with you, creating a series of design options for you to choose from. They will guide you through the entire process making sure that you are kept informed at all times.

1. Design consultation

You can choose a set design or we can create a new design and/or work with you, using your existing strip as the basis for your teamwear design. If you would like us to develop a completely new and unique design, there may be an extra charge.

2. Supply crests and logos in digital format and advise quantities and personalisation

All artwork for crest/logos and sponsor logos must be supplied in digital format; preferably vector EPS files, PDF, AI/CDR formats or a DST file for embroidery. If these files are not available, there may be a re-draw charge. If you require personalisation (e.g. numbers/player names/initials) please send us written details for each size of garment you require.

3. Approval of Final Digital Proof and Proforma

Once you have agreed the design and logos, we will ask you to approve a Final Digital Proof ("FDP") and a Proforma. The FDP shows you the garment, with all logos/crests, the quantity required by size and any personalisation required. The Proforma will show the price, payment terms and the email address we will use when we need to contact you. It is important that both documents are checked carefully.

4. Order Acceptance

On receipt of your approval (and if required your payment/deposit) we will accept the order and advise you of the expected delivery date.

5. Pre-production checks

Prior to starting production we will e-mail you two sample images to make sure the factory has properly understood your order. Production will be held until we receive your approval to avoid delaying your order, we ask that you e-mail your approvals within 3 days of receiving each image. The first will be the factory proofs showing the sublimated colours and design. The second will show the detail of your logos. Please check each image very carefully as the designs you approve will be what is made. For a charge, if you wish to approve an actual physical "factory proof" rather than approve an e-mailed image, you should add 2 weeks to the standard lead-time. If you wish to approve a physical sample of the made up garment, you should add 3-4 weeks to the standard lead-time. Please allow a further 3-4 weeks from the time you confirm any further minor changes if you wish to receive another made up sample.

Lead Time Guide - 8 weeks from order acceptance



The finished dress is worn by Lynsey Gallagher of Scotland

2014 GILBERT NETBALL

Style Name: SUBLIMATED DRESS		Fabric No: 35 - R20204016 85% Polyamide 15% Elastane
Style ID Code: GNT14C024		
Purchase Code: 77245		
Order Number: BP15386		

Size	Quantity	Number/Letters
6		
8		
10		
12		
14	1	MEIGHAN
16		
18		
20		

Position	Left Chest	Right Chest	Lower Center Chest	Right Hem	Left Hem	Right Side	Left Side
All logo positions are as per artwork							
Application:	SUBLIMATION	SUBLIMATION					
Logo colours:	258C & 300C	WHITE					
Logo size:	75x50mm	55x45mm					

Position	Back Neck	Upper Center Back	Middle Lower Back	Lower Back	Back Hem	Label	Trimming	Additional Details
All logo positions are as per artwork		MEIGHAN				SCOTLAND		
Application:	SUBLIMATION	SUBLIMATION				SUBLIMATION		
Logo colours:	WHITE	WHITE				WHITE & 300C		
Logo size:	60x50mm	50mm HGT				300mm WIDTH		

GRAYS INTERNATIONAL STANDARDS: PLEASE TAKE CARE TO CHECK THE QUALITY OF YOUR ORDER. ALL ORDERS ARE SUBJECT TO OUR STANDARD TERMS AND CONDITIONS. PLEASE REFER TO THE ARTWORK FOR DETAILED INFORMATION AND YOUR APPROVAL OF THIS JOB SHEET.

Sublimated Kit

Sample early stage design template is prepared for customer approval.



Sublimated Kit

Sample 'Factory Pattern' proof

OPTION 2

MADE TO ORDER (“MTO”) TEAMWEAR

The simplest way to create teamwear in your own colour combination.

1. Select MTO garments and choose colours

Tell us the garment code (ends with an S) of the garment you would like us to make and then choose from the MTO colours offered for that garment. We have standardised the names of colours across our range to help you choose garments that are made in similar colours. For example, if you are ordering a garment in “RED” it will be a similar shade of red to another garment available in “RED” but a garment with a different name; e.g. “MARS RED” or “SCARLET” will be a different shade. If ordering garments with different names, we recommend you ask us to show you swatches before you place your order. If you are looking for colours to be very consistent across garments, we recommend you don’t order garments with different colour names.

2. Supply crests and logos in digital format

All artwork for crest/logos and sponsor logos must be supplied in digital format; preferably vector EPS files, PDF, AI/CDR formats or a DST file for embroidery. If these files are not available, there may be a re-draw charge. If you require personalisation (e.g. numbers/player names/initials) please send us written details for each size of garment you require.

3. Approval of final digital proof and proforma

Once you have agreed the design and logos, we will ask you to approve a final digital proof (“FDP”) and a proforma. The FDP shows you the garment with all logos/crests, the quantity required by size and any number or name. The Proforma will show the price, payment terms and the e-mail address we will use when we need to contact you. It is important that both documents are checked carefully.

4. Order Acceptance

On receipt of your approval (and if required your payment/deposit) we will accept the order and advise you of the expected delivery date.

5. Pre-production check

Prior to starting production, we will e-mail you an image of each embellishment sample to make sure the factory has properly understood your requirements. Production will be held until we receive your approval. To avoid delaying your order, we ask that you e-mail your approval within 3 days of receiving the image(s). Please check each image very carefully as the embellishment you approve will be produced on your teamwear.

Lead Time Guide - 8 weeks from order acceptance.

Customised Kit

Sample early stage design template prepared for customer approval.

Embellished Stock Items

Sample early stage design template prepared for customer approval.

OPTION 3

EMBELLISHMENT OF STOCKED ITEMS

The quickest way to create teamwear with your identity.

1. Approval of embellishments

Select the garments you require with size and quantity.

2. Supply of all crests and logos

Before we can accept an order for embellished stocked items, we need to get your approval for each embellishment we are to supply. If you want us to make garments with a new crest/logo, you need to send details in digital format; preferably vector EPS files, PDF, AI/CDR format or a DST file for embroidery (if these files are not available there may be a re-draw charge). To prepare the right embellishment detail, we also need to know for each garment you require: the product code (Stocked garments end with a +), the specific colour name, the expected range of sizes and what personalisation (e.g. numbers and player names/initials) is needed. It is not necessary to supply the exact quantities and personalisation by size at this stage but it will speed the process if you can. We will then send you an image of sample embellishments for your review and approval. We can advise current stock levels at any stage of the process but we can only confirm stock availability once the order is accepted. Samples of stocked items can be supplied but they are chargeable to you. They will be credited 100% if returned within 2 weeks and in perfect re-saleable condition. If returned samples can't be resold (eg. missing tickets/packaging), or are returned late, we will not be able to credit 100%.

2. Check all garments are the correct sizes before embroidery

Once you are happy with your embellishments and told us what you want, we will check that there is stock and then ask you to approve a final digital proof (“FDP”) and a proforma. The FDP shows you the garment with all logos/crests, the quantity required by size and any personalisation (e.g. numbers and player names/initials). The Proforma will show the price, payment terms and the contact e-mail address. It is important that both documents are checked carefully.

3. Order Acceptance

On receipt of your approval (and if required your payment/deposit) we will accept the order and advise you of the expected delivery date. Stock availability cannot be confirmed until the order is accepted, so to avoid the risk of stock-outs we ask that you approve the PDF/Proforma and make any required payment as quickly as possible.

Lead Time Guide - 2-4 weeks from order acceptance depending on time of year.

OPTION 4

STOCKED ITEMS (no embellishment)

Order garments from our stocked range without any embellishment for the quickest delivery.

Lead Time Guide - 1 week from order placement subject to stock availability and credit.

Embellishment Services

A complete embroidery and printing service is available from Gilbert for you to personalise your garments. Please speak to your Gilbert representative for more information.

1. PRINTING

Digital printing services are available for your crest and sponsor's logos.

- Please supply vector images of the crest or logo in EPS, PDF or AI / CDR formats where possible.
- Whilst J-Pegs can sometimes be used, there will be a logo redraw charge if we cannot use the format supplied.
- We will apply text in Arial Bold unless you advise on alternative fonts.
- We will use Pantone solid coated colour references supplied by you. If not available, we will match the colours as closely as we can from the vector designs supplied.
- We will e-mail an image of a printed sample for your approval.

2. NUMBERING, NAMES AND INITIALS

- For personalisation we will use Arial Bold font in black and white unless you request an alternative.
- Font sizes have been standardised as noted below in order to fit our garments.
- Please supply by garment size full details of the name, number and initials required.

1 2 3 4 5 6 7 8 9 0

A B C D E F G H I J

Numbers - 12/15/18cm

Names - 2.4/4cm

Initials - 2/3cm

3. EMBROIDERY

Embroidery of your crest and sponsors logos is available if preferred.

- If the logo/crest has already been set up, please supply the embroidery DST file with run sheet (specific thread colour sequence).
- If the logo/crest has not been set up please supply the correct vector images in any of the following formats: EPS, PDF or AI/Cdr. There is set-up charge to create a DST file.
- Please advise size of logo and how they should appear on dark and light garments.
- Please advise Madeira thread colours if known, if not, standard Gray-Nicolls colours will be used.
- We will e-mail an image of your actual embroidery for your approval.

4. FABRIC SUITABILITY

Please note that some fabrics in the Gray-Nicolls range work better with printed embellishment rather than embroidery. We will be happy to advise you on the most appropriate application method for each garment chosen.

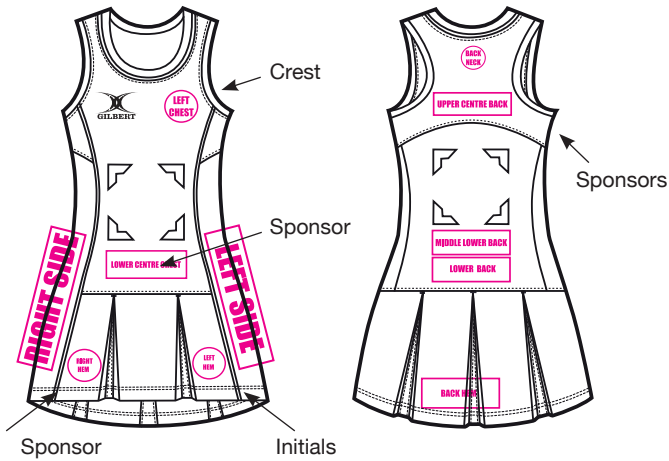
PLEASE NOTE:

Gilbert cannot accept responsibility for the unauthorised use of any third party logos or images. Gilbert reserve the right to refuse to apply any name or logo that we consider to be offensive or unsuitable.

Embellishment Positions

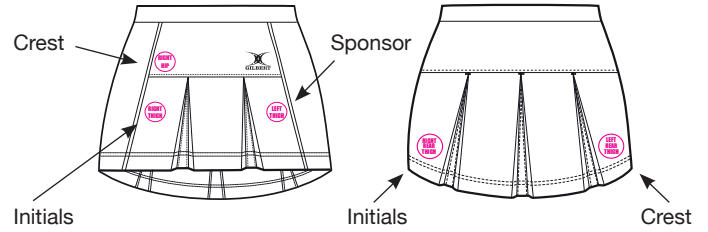
MATCHWEAR - DRESSES

All Gilbert match dresses can be branded as shown below.



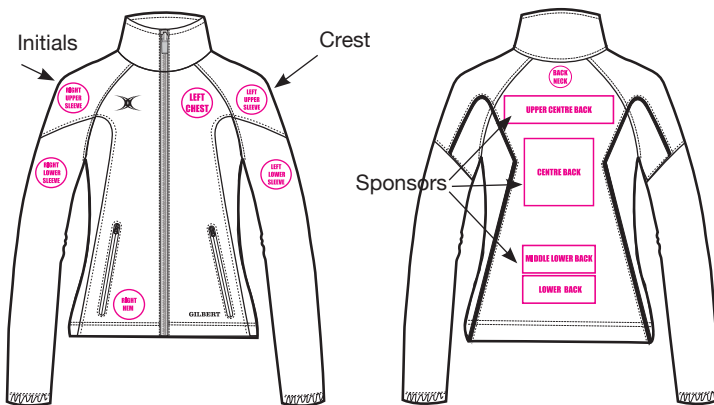
MATCHWEAR - SKIRTS AND SKORTS

All Gilbert skirts and skorts can be branded as shown below.



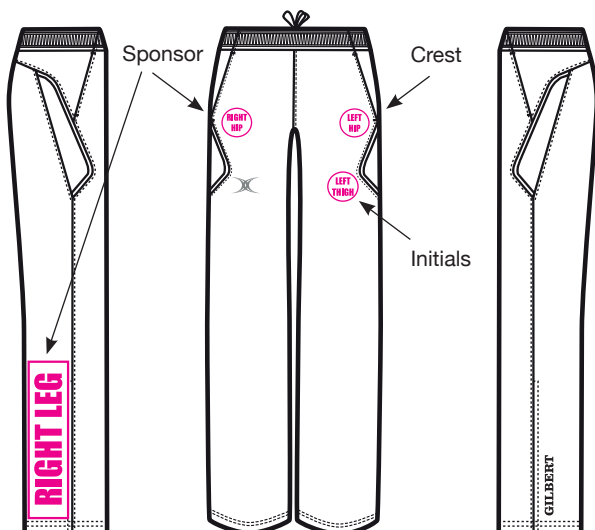
TRAINING WEAR - JACKETS

All Gilbert training tops can be branded as shown below.



TRAINING WEAR - TROUSERS

All Gilbert training tops can be branded as shown below.



PLEASE NOTE:

For MTO hoodies, fleeces and formal shirts only, the Gilbert brand may be applied using a tonal colour in keeping with the garment. This is the only exception from the standard black / white application. Other logos may be added to the garments as design features, such as logo tabs sewn into the seams, or logos highlighting technical features of the garment.

Glossary of Fabric Terms

WARMTH

G-Base 705

This fabric is designed for use in our base layers. It is made of synthetic materials which are designed not to absorb moisture but are fantastic at transporting it away from the skin. Wicking (a capillary action) is the process of drawing perspiration away from the skin through a material. Once the perspiration is drawn away from the skin, it can evaporate without having a cooling effect on the body.

COMFORT

G-Com 700/705

A lightweight woven fabric, ideally suited for leisure-wear styles in a range of climates. Thanks to a soft peach-like feel specifically selected for track suits, this fabric is extremely popular with our professional athletes.

G-Com 500/505

A more durable and traditional woven fabric also featuring a soft peach-feel with a matt finish.

G-Com 400/405

Incredibly lightweight fabric ideal for fast paced high intensity training.

G-Fleece 500/505

A traditional fleece fabric with excellent quality and weight. An attractive smooth face with a brushed reverse, offers superb comfort and warmth.

G-Fleece Stretch 800/805

A versatile layer to keep you warm with moisture control finish to wick sweat away to help keep you dry and comfortable. The stretch allows the garment to move with you to keep you comfortable and performing at your best.

G-Fleece Stretch 600/605

A lighter weight layer that also offers warmth and moisture control and excellent stretch properties for outstanding ease of movement and comfort both off court and in general use.

LIGHT WEIGHT

G-Lite 700

A light-weight mesh that features a honeycomb construction with a softer, lighter feel. It has excellent drying properties for added comfort. Suitable for training and leisure needs.

G-Lite 600/605

An extremely light-weight, soft-touch fabric featuring a highly breathable construction that allows moisture vapours to flow through. This acts to wick perspiration away from your skin, hence minimising perspiration and keeping your body cool and dry.

G-Lite 500/505

A breathable fabric construction that allows moisture to flow through. Actively wicks perspiration away from your skin, keeping you cool and dry.

G-Lite 400/G-Lite 405

A specifically formulated to accommodate sublimation printing, this fleece-style fabric has an attractive smooth face which allows you an unlimited choice of design. Its brushed reverse also delivers superb comfort and warmth.

G-Mesh/G-Mesh 400

Specially designed wider mesh weave for maximum ventilation in those areas where your body needs it most.

G-Pique 600/605

Soft lightweight knit pulls moisture through to keep you cool and comfortable

FIT

G-Pro Stretch 700/705

A lightweight performance fabric that stretches to provide an athletic fit and developed to be sublimated with your own design. The construction delivers a soft and light texture. This fabric minimises restriction of movement, thus improving performance and comfort in play. This fabric is also stocked in solid colours.

G-Quilt 600/605

Lightweight and versatile, this offers superb warmth without weight and is remarkably effective at keeping cold out. Quilted, synthetic insulation traps air in to keep you warm, even in the coldest weather.

WATER RESISTANCE

G-WP 750/755

Developed to give good water resistance and breathability to keep you dry and comfortable. This protects from the elements while out on the pitch and also for everyday use.

G-WP 600/605

Train right through whatever mother nature throws at you with this lightweight breathable and wind resistant fabric. With attractive grid pattern on the surface for added interest.

G-WP 500/505 Revolution

A modern, high tech, woven taslon fabric which is strong, durable, water-resistant and wind-resistant. Ideal for outerwear garments suitable for training in, every day of the week and offering reliable protection from the weather.

THE RIGHT TEMPERATURE TO WASH CLOTHES

The golden rule, before you start any load of laundry, is to check the care labels on all your clothes. This will give you an idea of the absolute maximum temperature you can wash your garments, and help you avoid disaster. It is always worth noting that bright and dark colours prefer cooler, quicker washes.

Higher temperatures washing encourages the loss of dye and fade black and bright clothes by opening up the fibres, so a warm or cool wash is your best bet.

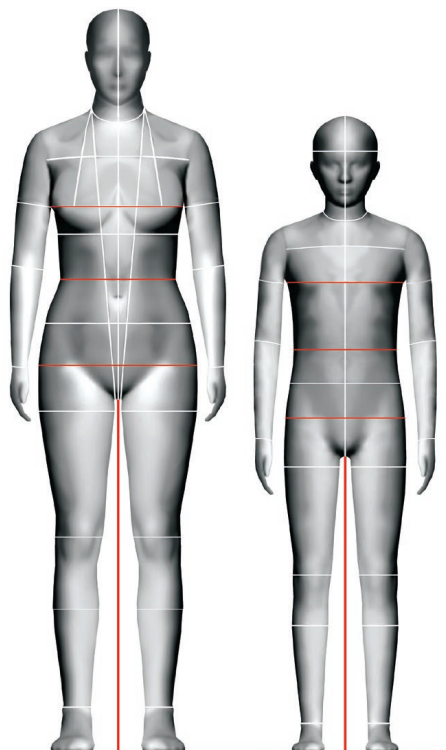
To set dye, try using white vinegar instead of detergent when you wash new clothes for the first time. After the first wash, using a good detergent aimed at low temperature washing will ensure you get a great clean, even at lower temperatures.

PLEASE NOTE

Where Stock Clothing uses the same fabric construction you will note that the descriptive title substitutes a numeric '5' for the last number. Example: **G-Lite 500** becomes **G-Lite 505**

Size Chart

The fit of your clothes depends on many things, including the cut, fabric, styling and even the underwear you are wearing! By following our body guide and how to measure guide, we hope to find you the best possible fit. It is always suggested that you measure more than once as your posture changes when you move and sometimes affects the measurement you take - do this and take an average of the measurements.



MEASURING

CHEST CIRCUMFERENCE

Measure all the way around- taking the tape approximately 2.5cm from pit of arm, around the fullest part of the chest.
Try to keep the tape level.

WAIST CIRCUMFERENCE

Measure all the way around- taking the tape around the natural waist (this is the narrowest part of your waist).
Try to keep your tape measure level.

Our trousers and shorts are elasticated so there is always plenty of room for movement here - if you are confused use the hip measurement.

LOW HIP CIRCUMFERENCE

Measure all the way around taking the tape around the fullest part of the bottom.
Try to keep the tape level.

INSIDE LEG

Measure from the top of the inside leg to bottom of the heel. Please remember you can always take a trouser up if they are a little long, try turning the waistband or sewing the hem.

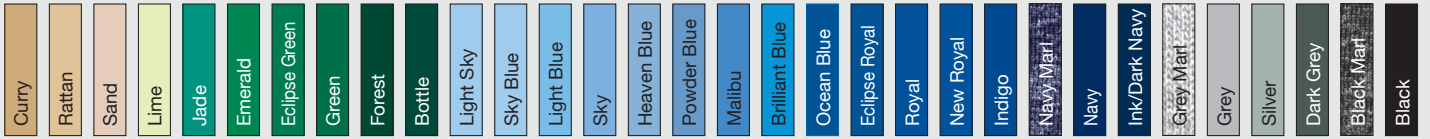
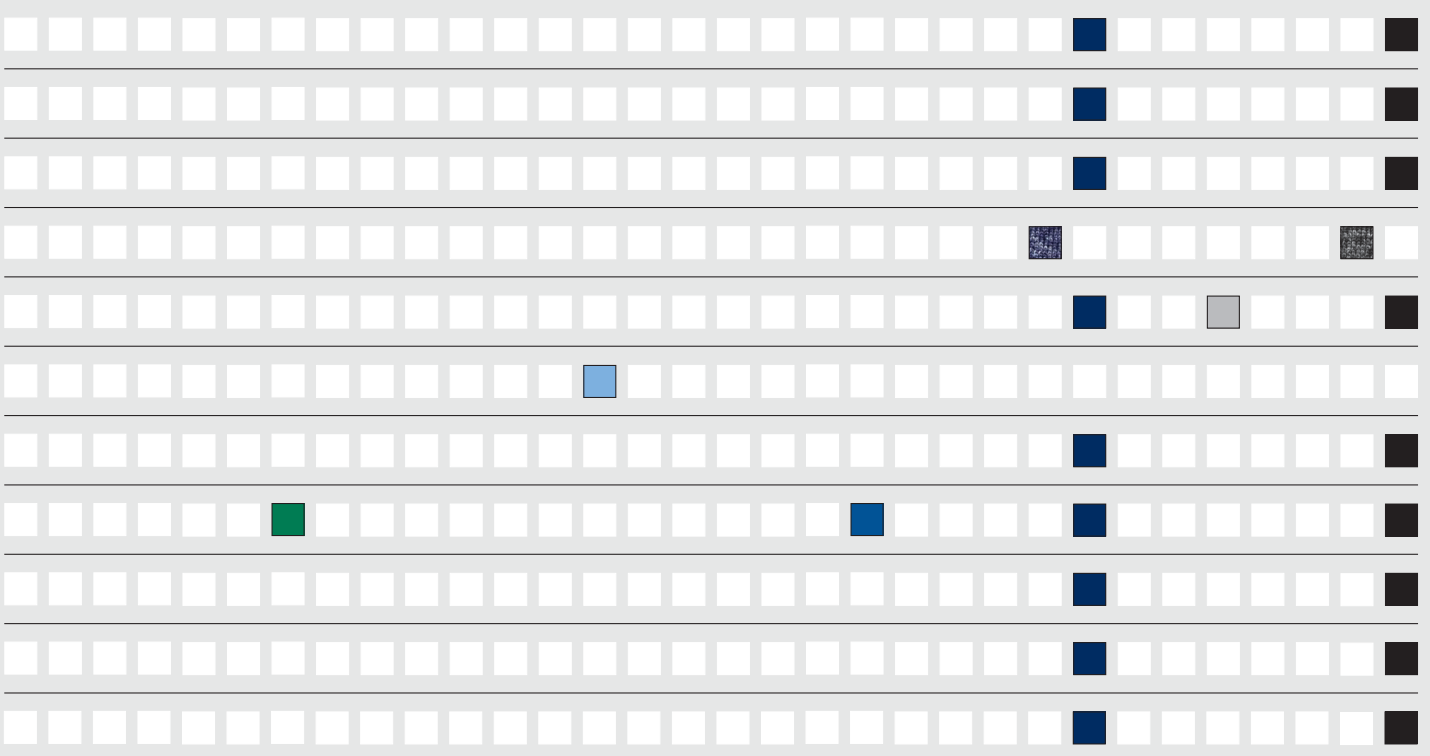
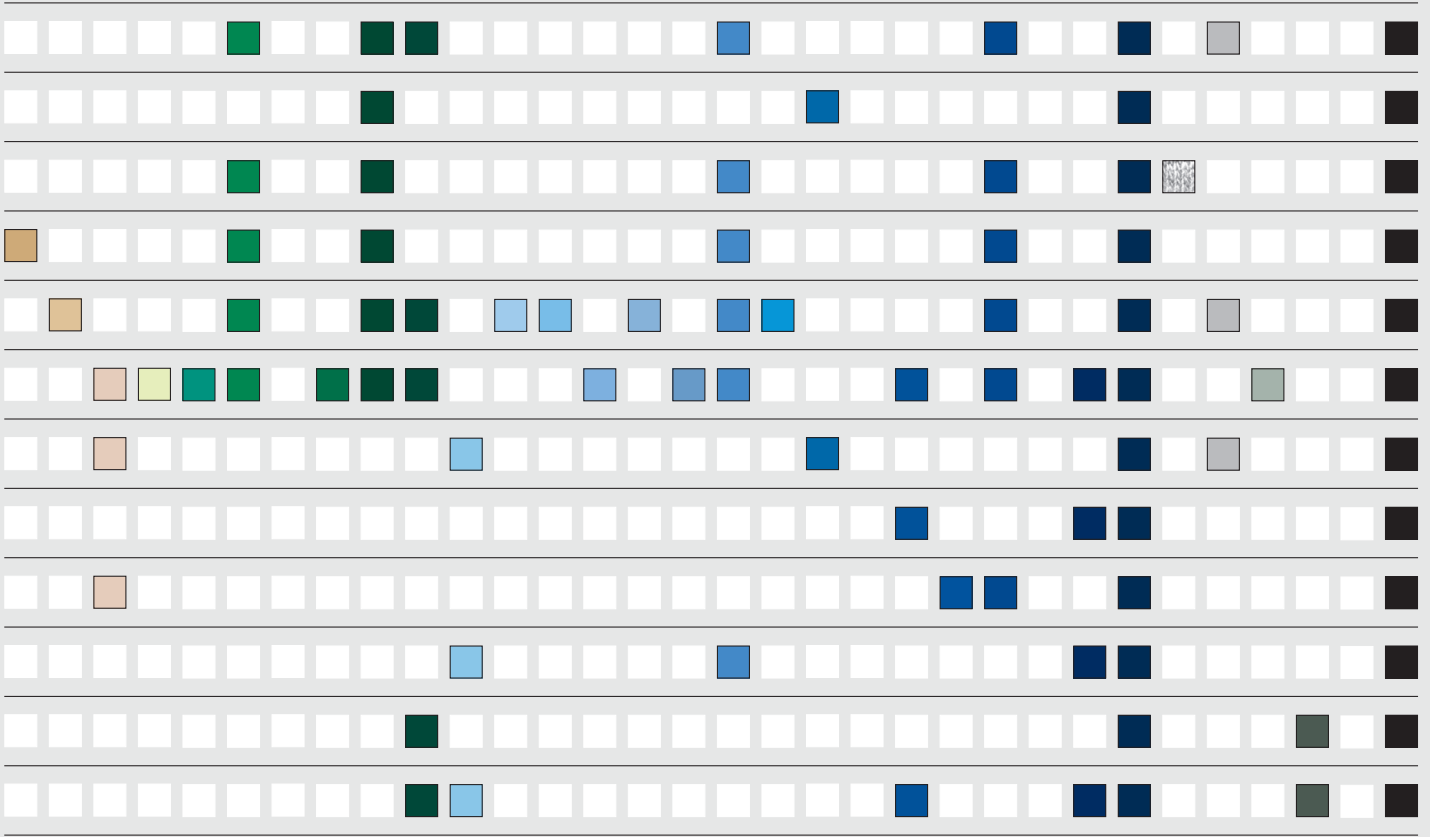
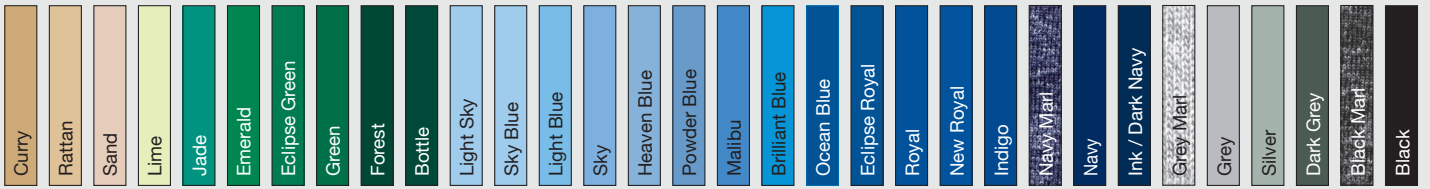
GENERAL TIPS

1. Measure yourself wearing underwear - do not measure over clothing.
2. Stand straight and keep both feet on the floor.
3. Make sure the tape measure is kept level.
4. Ask a friend to help take your measurements (it's sometimes easier to have help).

Our ranges are designed with layering in mind. If you buy a jacket for your body size, you can be sure you will be able to fit a top and a light sweater underneath.

All measurements are an approximate guide.

LADIES SIZING	6	8	10	12	14	16	18	20
CHEST cm	78	82	86	90	94	98	102	106
inches	30¾	32½	34	35½	37	38½	40	41¾
WAIST cm	55 - 60	60 - 64	64 - 68	68 - 72	72 - 76	76 - 80	80 - 84	84 - 88
inches	22 - 23½	23½ - 25¼	25¼ - 26¾	26¾ - 28½	28½ - 30	30 - 31½	31½ - 33	33 - 34½
LOW HIP cm	86	90	94	98	102	106	110	114
inches	34	35½	37	38½	40	41¾	43¼	45
INSIDE LEG (Standard) cm	75	76	77	78	79	80	81	82
inches	29½	30	30¾	30¾	31⅙	31½	32	32¼
INSIDE LEG (Tall) cm	80	81	82	83	84	85	86	87
inches	31½	32	32¼	32¾	33	33½	34	34¼
CHILDRENS SIZING	AGE 5 - 6	AGE 7 - 8	AGE 9 - 10	AGE 11 - 12				
CHEST cm	63.5	67.5	71.5	75.5				
inches	25	26½	28	29½				
WAIST cm	51.5 - 55.5	55.5 - 59.5	59.5 - 63.5	63.5 - 67.5				
inches	20 - 21½	21½ - 23¼	23¾ - 25	25 - 26½				
LOW HIP cm	66	70	74	78				
inches	26	27½	29	30½				
INSIDE LEG (Standard) cm	55	60	65	70				
inches	21	23½	25½	27½				



Your kit, your colours



Clubs and Schools



GILBERT
WWW.GILBERT-NETBALL.COM

 FOLLOW US ON
twitter
@gilbertnetball1

 Find us on
Facebook
www.facebook.com/gilbertnetball

FOR FURTHER DETAILS
PLEASE CONTACT YOUR
SALES REPRESENTATIVE
OR CALL

01580 883120

GILBERT NETBALL

Tel: +44 (0) 1580 880357 Fax: +44 (0) 1580 881156
Email: sales@gilbertrugby.com

We reserve the right to change or delete products without prior notice.

Please note: The colour of products in this catalogue have been represented as accurately as possible, but are guided by the limitations of the four-colour printing process.

