

F-Track



science laboratory fitted furniture solutions

some of our projects & clients

“Strive for perfection in everything you do. Take the best that exists and make it better. When it does not exist, design it.” - Sir Henry Royce, Rolls Royce

Primary School



Croydon



Bromley



Silvertown



Wolverhampton



Wolverhampton



Alton



Exeter



Knowsley

SEN School

Secondary School



Wolverhampton



Coulsdon



Telford



Rochdale



Rochdale



Southampton



Rochdale



Southampton



Rochdale



Sandwell



Rochdale



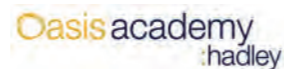
Hyde



Bristol



Madeley



Enfield



Droylsden



Rochdale



Denton

UTC and College



Burnley



Blackburn



Barnet



Merthyr Tydfil



Tameside



Rochdale



Rochdale



Rochdale

Pupil Referral Unit

science laboratory fitted furniture //

introduction

F-Track is manufactured by Freedom Ability Ltd. a committed UK based manufacture. The directors of Freedom Ability Ltd. have over 40 years experience in the education furniture sector and are extensively involved in the furniture fittings and equipment consultancy field, which has allowed them to identify how the correct use of school FF&E permits and encourages different pedagogies.

Safety is paramount and all services should be securely separated from students. The F-Track engineered solution achieves this whilst allowing easy access to services for technicians.

This engineered and flexible system accommodates both perimeter and island configurations and can also be used in any other subject area.

F-Track not only stands for flexible but also fast installation unlike furniture that is crafted on site by joiners this engineered solution can simply be unbolted and moved to any other location in the school, college or university. Guaranteeing ultimate flexibility and making it particularly attractive where temporary buildings are used during the construction stage.



f-track construction //

key benefits

- Carcass Material** - Melamine faced 18mm thick MDF is used for carcass base, sides, back and drawer bases. Light grey U112 is standard other colour are available for a surcharge please refer to page 10
- Drawers** - Are constructed with heavy duty pressed steel sides and runners with a Melamine faced 18mm thick MDF base and back to ensure drawer base sag does not occur.
- Shelves** - Melamine faced 25mm thick board is used for internal adjustable shelves. These extra thick shelves reduce sagging when loaded with heavier loads.
- Feet** - Leveling feet are produced from heavy duty plastic in order to help protect and isolate the units from any damage occurring resulting from an escape of water.
- Plinth** - Moisture resistance Faced 18mm thick MDF is used to help prevent water ingress damage through escape of water or floor mopping. The colour is Black in order to mitigate the visual impact of shoe rubber scuff marks assisting house keeping.
- Fly Through Base** - The base panel is the full width of the unit with the side panels sitting on top. This removes a joint shear point, improving the supportable weight of the carcass side panels.
- Hinge** - Trough fixed hinges forming a clamping force. The exposed axel single pivot hinge used is a 240° opening Steel Knuckle Hinge is very strong and features finger trap prevention.
- Cam Locks** - Cupboard doors can be fitted with a cylinder cam lock which features a removable barrel via the use of a Master Key for key change. This barrel can be specified as uniquely keyed or as a universal key. The lock lever locks into the F-Track aluminium extruded front top rail so that there is no obstruction on the units base panel.
- F-Track Rails** - Constructed form a strong anodized aluminium extrusion, these rails facilitate and accommodate service void panels ensuring easy access through the life span of the furniture to services for both perimeter and Island layout designs. The F-Track rails also strengthen worktop stability and enable secure locking of unit doors. They also provide a modern aesthetic design.
- Contents** - The prominent aluminium fascia is perfect for attaching printed labels to assist users by identifying the storage cupboard contents.
- Plastic Trays** - The market leading Gratnells plastic trays are used and trays depths are configured around the clients needs.
- Tray Runners** - The runners feature a "U" channel guide ensuring that trays do not fall to the floor once after sliding them open for access.

f-track system

F-Track can facilitate knee space work areas and cupboard in one integrated system.



island system



Peninsula or Island service void back panel access.



Re-enforced sink supports & complete back panel service Void protection for all units Inc. sinks units.



Under mounted sinks with machined draining zone.



Perimeter knee space can be provided with or without support legs depending on wall strength.



F-Track fascia rail improving worktop strength & carcass functionality, and providing a location for content labels.



Many shapes of service turrets are available and can incorporate Power, Data, USB & Gas.

laboratory fittings



Cold Water Bib Tap

Pillar tap with fixed serrated nozzle.
 Applications: Standard laboratory water tap for all applications where header tank supply is present (Full WRAS approval)
 All brass body, Rilsan plastic coated, white (RAL9016). Chemical resistant plastic ABS handwheel, Identification coding to DIN13792 Connection and mounting: 1/2" BSP male flat ended shank x 60mm long with back nut. Standard anti-rotation base with location pin. Pressure and Flow: Maximum pressure 100PSI (Recommended 20PSI) Flow Rate @ 20 psi = 12 Litre/min. Spares: Handwheel Assembly, Pt No 960180 Valve headwork, Pt No 950148 WRAS: Approved



Hot Water Bib Tap

Pillar tap with fixed serrated nozzle.
 Applications: Standard laboratory water tap for all applications where header tank supply is present (Full WRAS approval)
 All brass body, Rilsan plastic coated, white (RAL9016). Chemical resistant plastic ABS handwheel, Identification coding to DIN13792 Connection and mounting: 1/2" BSP male flat ended shank x 60mm long with back nut. Standard anti-rotation base with location pin. Pressure and Flow: Maximum pressure 100PSI (Recommended 20PSI) Flow Rate @ 20 psi = 12 Litre/min. Spares: Handwheel Assembly, Pt No 960180 Valve headwork, Pt No 950148 WRAS: Approved



Cold Water Twin Outlet Bib Tap

Single Pillar tap with Twin outlets fixed serrated nozzles.
 Applications: Standard laboratory water tap for all applications where header tank supply is present (Full WRAS approval)
 All brass body, Rilsan plastic coated, white (RAL9016). Chemical resistant plastic ABS handwheel, Identification coding to DIN13792 Connection and mounting: 1/2" BSP male flat ended shank x 60mm long with back nut. Standard anti-rotation base with location pin. Pressure and Flow: Maximum pressure 100PSI (Recommended 20PSI) Flow Rate @ 20 psi = 12 Litre/min. Spares: Handwheel Assembly, Pt No 960180 Valve headwork, Pt No 950148 WRAS: Approved



Cold Water Bib Tap

Two-way high visibility droplever gas tap fixed serrated nozzle.
 Integral anti-rotation pin.
 Applications: Standard laboratory gas tap for Bunsen burner type applications. Suitable for both natural and LPG gas applications.
 Construction: All brass body, Rilsan plastic coated, white (RAL 9016). Identification coding to DIN13792 Connection and mounting: 3/8" BSP male flat ended shank x 60mm long with back nut. Standard anti-rotation base with location pin. Service: Natural or LPG gases Pressure and Flow: Maximum work pressure 20 – 25 Mbar Flow Rate @ 20Mbar = 1 Cubic metre/hour per nozzle.



Cold Water Bib Tap

Two-way wall mounting high visibility droplever gas tap fixed serrated nozzle, Integral anti-rotation pin.
 Applications: Standard laboratory gas tap for Bunsen burner type applications. Suitable for both natural and LPG gas applications.
 Construction: All brass body, Rilsan plastic coated, white (RAL 9016). Identification coding to DIN13792 Connection and mounting: 3/8" BSP male flat ended shank x 60mm long with back nut. Standard anti-rotation base with location pin. Service: Natural or LPG gases Pressure and Flow: Maximum work pressure 20 – 25 Mbar Flow Rate @ 20Mbar = 1 Cubic metre/hour per nozzle.



Vulcathene 504 Unslotted waste pipe 51 x 85mm

Vulcathene is a completely purpose-designed chemical resistant plumbing system that has been specified and installed in the laboratories of schools, universities, hospitals and research facilities worldwide for over 60 years. Tried, tested and proven, Vulcathene is the only chemical drainage system to have withstood the test of time in the most demanding of laboratory applications.
 Purpose designed for chemical drainage
 Bba approved
 Excellent chemical resistance



Vulcathene W561 anti-syphon bottle trap 38mm

Vulcathene is a completely purpose-designed chemical resistant plumbing system that has been specified and installed in the laboratories of schools, universities, hospitals and research facilities worldwide for over 60 years. Tried, tested and proven, Vulcathene is the only chemical drainage system to have withstood the test of time in the most demanding of laboratory applications.
 Purpose designed for chemical drainage
 Bba approved
 Excellent chemical resistance

tear drop system

Island System

The Tear Drop system provides island work areas with services for 10 students each.



Services can comprise of both wet and dry configured to the clients needs.



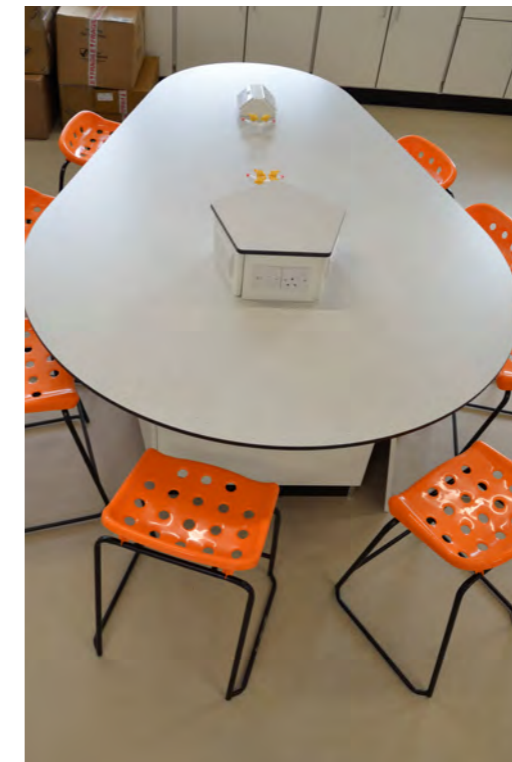
Gas Ventilation.



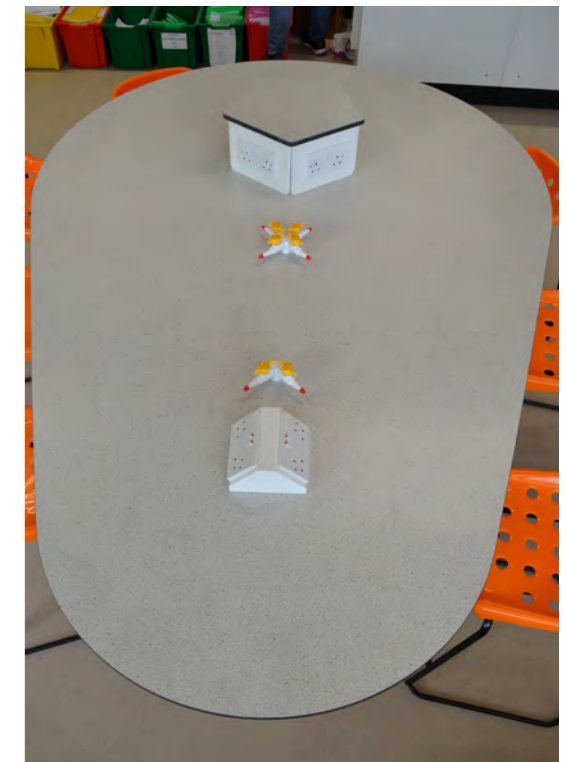
Dry Service Turret.



Work surface Dry Service.



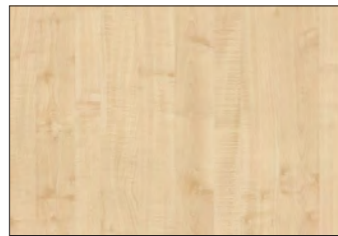
Many shapes of service turrets are available and can incorporate Power, Data, USB & Gas.



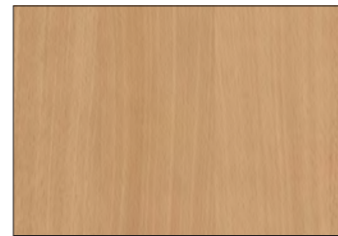
Many shapes of service turrets are available and can incorporate Power, Data, USB & Gas.

colours

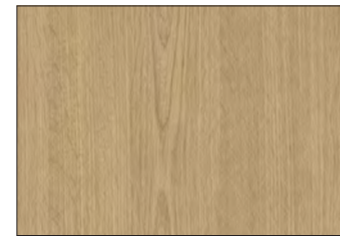
Carcass



Maple D375



Beech D381



Windor Oak D1929

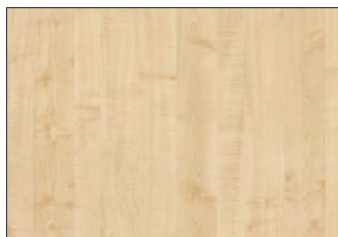


White W10300

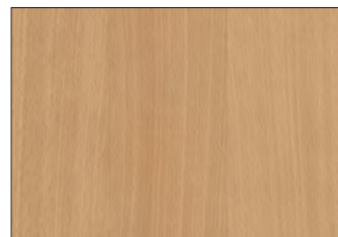


Light Grey U112

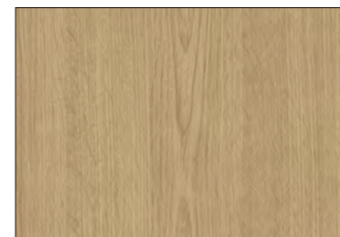
Doors and Drawer Fronts



Maple D375



Beech D381



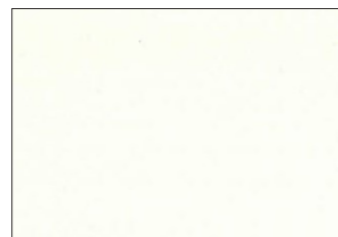
Windor Oak D1929



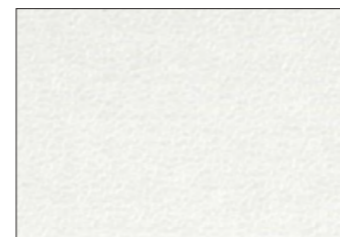
White W10300



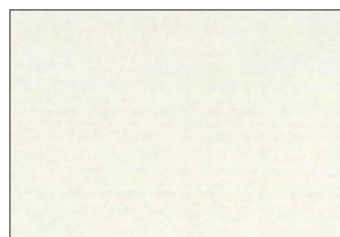
Icy White U11027



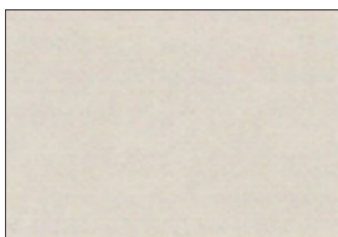
Magnolia U11509



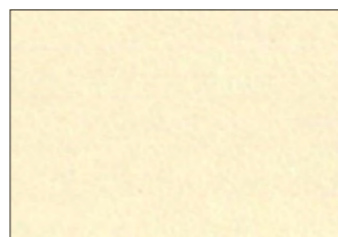
Grey White U11500



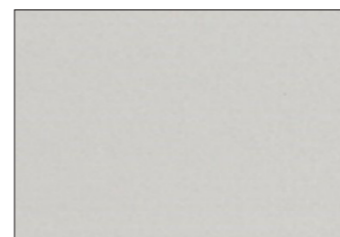
Beige Grey U15331



Sand Beige U16003

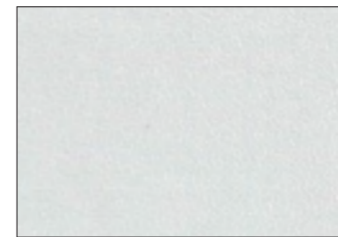


Cream U16020

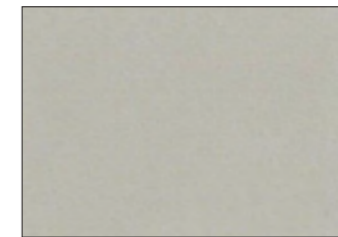


Cashmere U12168

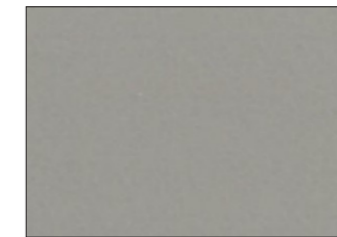
Doors and Drawer Fronts



Light Grey U12188



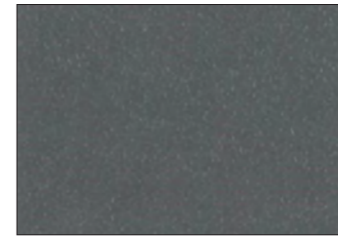
Cuvo U15190



Congo U16002



Quando U15193



Basalt Grey U12018



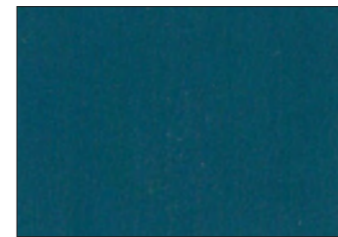
Orchidea U17141



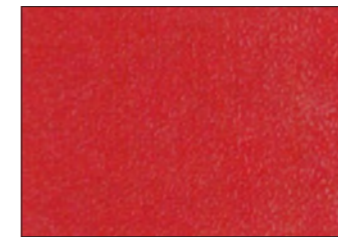
Hudson U18504



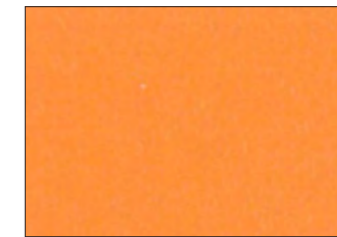
Gentian Blue U18059



Skaggerak U18006



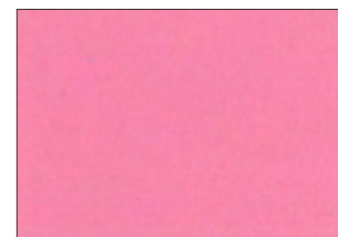
Signal Red U17225



Orange U16010



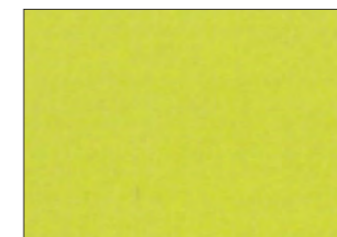
Zinc Yellow U15194



Hydrangea U17014

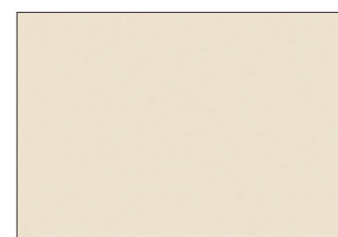


Cadiz U19003



Olive U19509

Corian



Bisque



Evening Prima



Mineral



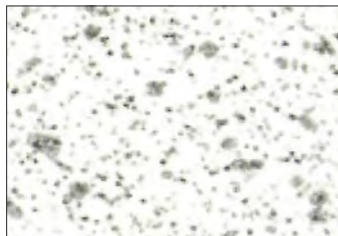
Silver Grey

colours

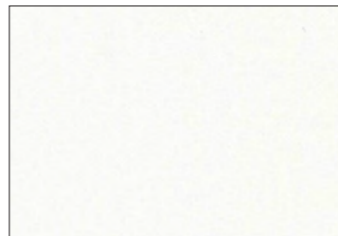
Trespa TopLab Base



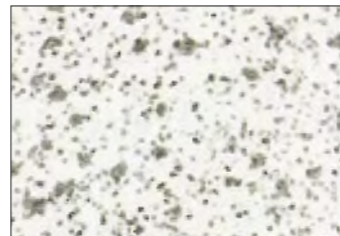
White E0-00



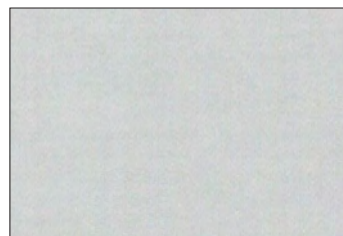
Speckle White S0-00



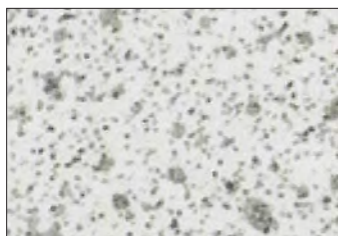
Pastel Grey E0-015



Speckle Pastel Grey S0-015



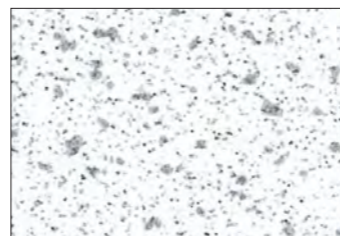
Silver Grey E0-02



Speckle Silver Grey S0-02



Icye Blue E25-01



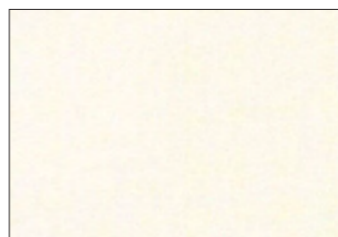
Speckle Icye Blue S25-01



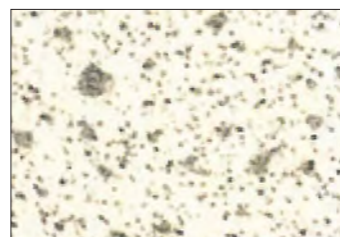
Mid Grey E0-04



Speckle Mid Grey S0-04



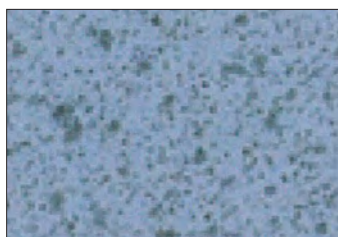
Sand E3-01



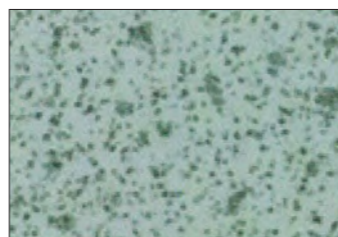
Speckle Sand S3-01



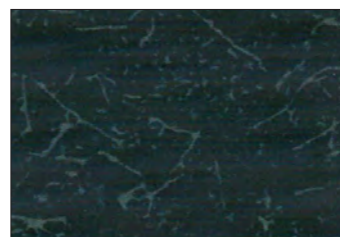
Slate Grey E0-07



Speckle Powder Blue S17-32



Speckle Aquamarine S20-12



Black Craquele C0-09

policies

Freedom Ability Ltd.

Health and safety policy //

This policy, which conforms to the requirements of section 2(3) of the Health and Safety at Work Act, 1974, outlines the Company's commitment to the health, safety and welfare of employees and third parties that may be affected by our work.

SAFETY IS PARAMOUNT

We protect the wellbeing of the end user and our own people by accepting our moral responsibility for safety.

In addition to our obligations as a furniture manufacturer, we have a clear legal and business obligation to produce safe products - safely.

Our record in product (and process) safety enhances our reputation and credibility and gives us a business advantage. Focus on safety helps us to set the standards for the future. Our safety culture reduces risk commercially, environmentally and improves our working conditions.

Day to day responsibility for management of health and safety is delegated to the management team of the company. Appropriate management and measurement tools will be used to promote ongoing improvement in health and safety.

Within each department, various duties are given to other members of management. It is each of these members of management's responsibility to ensure that health and safety activities are adequately delegated in their absence. No member of management must allow unsafe working practices to occur within their department. The safety of the individual must at all times take precedence over output. Where action in connection with safety matters has been agreed, it is the responsibility of line management to ensure agreed actions are implemented without unnecessary delay. Incidents or accidents arising from circumstances where a conflict between safety and output exists will be regarded as being the direct responsibility of the member of management concerned.

Notwithstanding the fact that we do not live in a perfect world, our target shall always be the achievement of zero defects in health and safety - that is, we shall aim to have no accidents or near misses. Accordingly, we shall plan, manage, monitor and review our health and safety activities, with the specific aim of continually improving our health and safety performance and identifying, controlling and reducing risks associated with our operations. The Company will aim to achieve full compliance with current legislation as a minimum standard.

It is the duty of every employee of Halo Education Ltd to ensure that they conform at all times with their own statutory responsibilities under sections 7 and 8 of the Health and Safety At Work Act 1974, with their terms of employment, and with the Company's rules and regulations in relation to the health and safety of themselves and others. Employees will be involved in and contribute to improving health and safety management systems whenever possible.

The Company will provide necessary training and guidance to all persons who have duties and responsibilities under this policy and legislation, and will endeavour to involve employees through consultation and participation, as well as training.

Environmental policy //

The Environmental Policy sets out the company's objective to maintain operational standards to protect the environment.

It confirms the company's commitment to the proper management and monitoring of waste streams, the reduction of pollution, compliance with environmental legislation and relevant training of employees.

- Conduct all of its affairs with a sincere, balanced and proper regard for the environment.
- Assess the impact upon the environment before any new products, activities or processes are undertaken.
- At end of life cycle products to be recyclable.
- Use of processes, practices, techniques, materials, products, services or energy to avoid, reduce or control (separately or in combination) the creation or discharge of any type of pollutant or waste, in order to reduce adverse environmental impacts.
- Wood based products to be sourced from FSC certified sources.
- Encourage our supply partners to follow similar policies.



**freedom
ability**

adaptable
learning
environments

Freedom Ability Ltd

Unit 4C, Sett End Road North,
Shadsworth Business Park,
Blackburn, Lancashire,
England BB1 2PT

t: 0044 (0) 1254 678777

f: 0044 (0) 1254 678782

e: sales@freedomability.co.uk

w: www.freedomability.co.uk

Freedom Ability's policy is one of continuous improvement, therefore the right is reserved to make changes in design and specification at any time without prior notice, we may also choose to discontinue products.

The products featured within this brochure are protected by copyright, patent, registered and unregistered design rights.

European registered design also applies to some of the products.

All goods are supplied subject to Freedom Ability's terms and conditions, copies of which are available on request.

Prices do not include VAT.

All carriage is to UK mainland only, please enquire for carriage charges further afield.