

# newdesign

Graduate Showcase/2019

Graduate  
Showcase

R  
E  
J  
U  
V  
E  
N  
E  
A  
T

BRUNEL UNIVERSITY  
LONDON**MATTHEW ANDERSON****Cryosuit – A portable rapid cooling solution to tackle heat stroke**

Heat stroke is the most severe heat-related illness and is the second leading cause of mortality in sport. In a medical emergency, heat stroke can lead to multi-organ failure and even death within 30 minutes unless promptly and correctly treated.

A rapid reduction of core body temperature is the primary objective for all cases of exertional heat stroke. It is critical to begin rapid cooling immediately after diagnosis in order to minimise the risk of permanent injury or death. This often involves transporting unconscious or delirious patients to the cooling apparatus, requiring multiple medical professionals while wasting crucial treatment time. Ice water immersion is the most effective technique currently used, however utilising this method involves considerable portability and logistical barriers. This project aims to address this by proposing a portable rapid cooling solution that can be deployed in organised sporting and endurance events.

**AJHARUL CHOUDHURY****Aero: Portable Air Quality Monitor**

Aero is a portable air quality monitoring device for those who live in urban areas or suffer from conditions such as Allergic Rhinitis, which causes irritation and allergic reactions to pollutants in the air.

Air pollution has been a constant global concern for the modern world. Many sources of pollution are tied directly to urban environments, causing 80% of urban cities to have levels of air pollution above the healthy limit. A lot of these cities do not collect information or report on outdoor air quality, compromising the public's awareness of the air pollution around them.

Aero aims to resolve this. It is battery powered and portable, allowing it to stay with the user throughout the day and provide information on air quality in the various locations that they visit, such as at home, at work and while commuting.

**BRADLEY GODBOLD****Homely: Individual User and Appliance Energy Tracking System**

To negate irreversible global warming, the public's relationship with energy must change together with consumption, thus becoming more visible and in turn creating conscious and sustainable usage behaviours.

Homely, at its core, is an energy monitoring system; traditional means of energy monitoring such as smart meters only provide feedback on a property's consumption as a whole. Homely tracks an individual user's energy consumption and identifies the specific mains appliance used at the point of use. This is achieved through RFID coupled with non-invasive current waveform appliance detection and energy disaggregation algorithms. The energy-monitoring side of Homely is supported by a digital application that is built around core sociological human behaviour theories, such as a collective consensus and social responsibility. Homely brings energy consumption to the centre of users' lives, positively influencing sustainable behaviour change in regard to energy consumption."

**RUTE PEREIRA CRESPO FIADEIRO****ReCleft: Cleft Palate Simulator**

Cleft lip and/or palate (CLP) is the leading craniofacial anomaly affecting 1 in every 500-700 births. Gaining hands-on experience in cleft surgery can be difficult due to limited access within the infant oral cavity and the delicate tissues of the velum. Simulation allows surgeons-in-training to gain experience in a low-risk, low-stress environment. The current simulators for cleft palate surgery are either over-simplified or prohibitively expensive. The current, and only, commercially sold simulator costs £261 per surgery.

ReCleft is a high fidelity reusable training simulator for surgeons across the world. The simulator comprises of a training service package offering a unilateral cleft palate with silicone soft tissue components, which may be replaced. ReCleftBio is a bioplastic simulator that offers a more sustainable option than silicones. The user may manufacture their own simulators by using locally sourced resources and the moulds provided.

**SAMANTHA ROBERTS****Mini Rangers**

Mini Rangers is a service aiming to reconnect children aged five to seven years old to nature through educational digital gaming. Helping children create a long-lasting appreciation for nature is vital in the conservation of our future world; kids who take part in nature based activities are more likely to participate in environmentally friendly practises as adults. With only one in three children being able to recognise a magpie, yet nine out of ten being able to name a Dalek, technology can bridge the gap between the "indoor generation" and nature.

The application-based service transitions an "indoor generation" outdoors by encouraging children to collect and hunt for GPS-based augmented reality animals at parks and green spaces. Educational clues lead up to the animated animals, aligning with the Key Stage one Science curriculum. The service is based heavily on reward systems to encourage repeated use to create an affinity for nature, including adapting animals seasonally.

At home, the experience is extended through paper craft animal kits and additional learning via the app. Animals unique to each park are printed on the back of physical trail maps, inspiring collectability. Once made, the 3D card animals interact with the application in real time, using facial recognition technology to further educate children about British Wildlife."

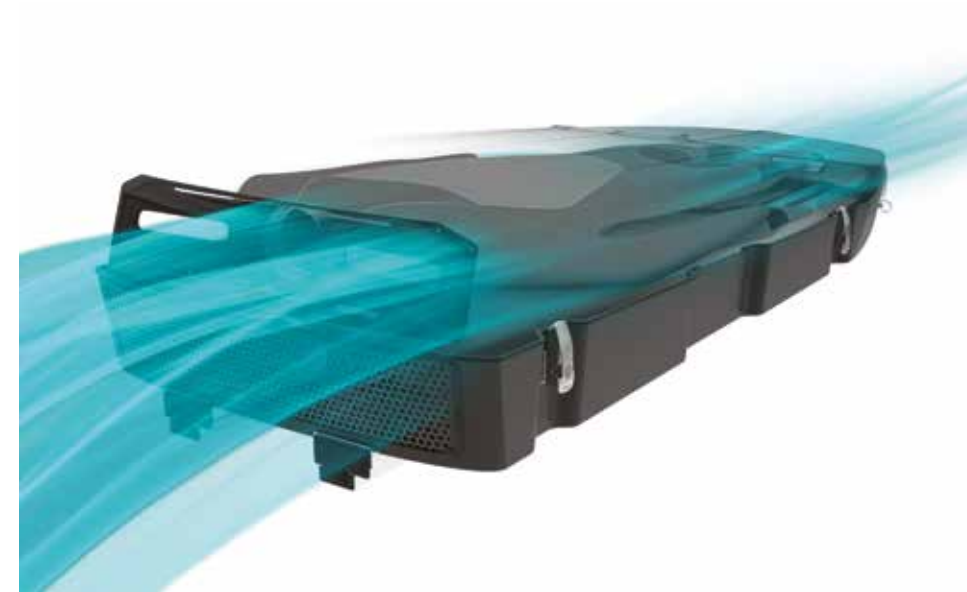
UNIVERSITY OF NOTTINGHAM



**ARCHIE ASHFORD**  
**MEng Product Design and Manufacture**  
 Surface is the first surf rescue board designed to aid lifesavers in the treatment of neck and spinal injuries. Using water as ballast, Surface can be submerged and re-surfaced to safely transfer patients onto the board.



**FRED WHITTEN**  
**MEng Product Design and Manufacture**  
 SousChef is a personal sous vide cooker and kitchen assistant. It improves on existing sous vide cookers by combining everything you need in one device - therefore making it easier and more convenient to use.



**JOHN DE CAESTECKER**  
**MEng Product Design and Manufacture**  
 Using directed air-flow, dryve can dry 2 wetsuits (traditional or zipperless) within 20 minutes. The box can hold 2 surfboards, up to 9', and has an adjustable mechanism which allows the system to lower over any boot angle.



**JOSHUA LAMB**  
**MEng Product Design and Manufacture**  
 A solution to the First and Last Mile problem. E-LINK is an autonomous shuttle bus that tackles accessibility, acceptability and communication issues that surround autonomous vehicles.



**CHEN FENG CHUANG**  
**BEng Product Design and Manufacture**  
 The "COR-E" bike embodies a futuristic design approach to solve the challenges of urban commuting in 2025. It's intended for personal use, public sharing, as well as to assist delivery service.



BIRMINGHAM CITY UNIVERSITY  
BIRMINGHAM SCHOOL OF ARCHITECTURE AND DESIGN  
BA (HONS) PRODUCT AND FURNITURE DESIGN



**NICK STORMONT**  
**Mercury 01**

This bespoke piece of modern organic furniture has been inspired by the fluid forms in yacht design. It incorporates the same technologies and techniques used in this industry but re-imagined in a side table. This handmade piece of fibre glass was manufactured in collaboration with the boat building company Collars Oxford.



**DANIEL KITCHEN**  
**Quern - noun - A hand mill consisting of two stones to crush and grind.**

The Quern collection are a range of hand-crafted sculptural Pestle and Mortars with accompanying copper bowls designed to develop character over time.

Textured black ceramics with polished copper form a material and textural contrast that invokes the sense of feel.



**ALICE EVANS**  
**The Art and Design of Human Nature**

Intended as a conversation starter, this chair harnesses human waste with a sustainable mindset and demonstrates the power of collaboration and connection. It also aims to fill the spiritual void at the heart of consumer culture. What are products actually made from? Where are they made? By who? Where, when and why?



**KALANDRA MCFARQUHAR**  
**tetraCOLLECTION**

This collection of side tables are designed around the exploration of Jesmonite and its potentials, influenced by mountain formations and geometric design.

Each table is handcrafted and bespoke with the option to be made in various colours and effects. Each table top is completely unique as one cast results differently from another.

DE MONTFORT UNIVERSITY  
BA (HONS) PRODUCT AND FURNITURE DESIGN  
BSC (HONS) PRODUCT DESIGN



**LOUIS FARNSWORTH**  
**BA Product Design**  
**Orbit**

Protection and safety for skiers is very well established now helmets are an item required to wear on the head. However, any impact to the head follows through to the neck. In some cases, the cervical spine becomes vulnerable where the skier could end up experiencing a life-threatening injury resulting in paralysis or death.

Orbit is an exo-skeletal neck brace that works in conjunction with the open faced helmet. It offers its protection by limiting the movement of the neck in the event of an impact countering its extreme movements (Hyper Extension, Lateral Extension, Coupled Axial Loading and Hyper Flexion). Orbit absorbs a head impact by spreading the force across the back, shoulders and tethers instead of over-rotating the neck in all directions, ensuring 360 degree protection.

It provides functional and physical properties that are low profile, strong and adjustable for any body size. Orbit considers skiers by not restricting movement, mimicking natural skiing actions of the body and is also comfortable and well ventilated, followed by a secure fitting to the body.



**JOSH HOLDEN-BROWN**  
**BA Product Design**  
**Pro-Tether**

Pro-Tether safety equipment provides professionals an unprecedented tool tethering system for Working at Height. Current tethering products don't require a tool to be permanently attached. Tools are often carried loose in a tool bag and tethered whilst in use. This means there are opportunities for tools to be dropped, either whilst carried in a bag or during tool change over. As stated by The Work at Height Regulations 2005 no.735, Regulation 10. Every employer shall, where necessary to prevent injury to any person, take suitable and sufficient steps to prevent, so far as is reasonably practicable, the fall of any material or object.

Innovation within in the clip mechanism provides a patentable competitor to Australian and American marketed tethers. Pro-Tethers asymmetric mechanism is handed so the user has distinct operational direction, making it easy to learn and become behavioural. The mechanism's conceptual model is simple but audible clicks provides immediate feedback i.e. confidence to the user that the tool switch has been successful. Compared to competitors additional system products have been designed to accommodate and exhibit the full capabilities of the clip.



**JAMES SANCHEZ**  
**BA Product Design**  
**Tryo**

Tryo is a wearable orthotic which stabilises the user's hand, reducing shakes and tremors caused from diseases such as Parkinson's disease. The product aims to give confidence those suffering from Parkinson's disease doing day to day tasks.

This project explored the issues and problems when living with Parkinson's disease and identified where innovative solutions can be generated. With the UK's population being the highest ever (and will continue to grow to 74 million by 2039) as well as aging population (25% aged above 60 by 2039), the demand for living space, hospital space and health care is critical. The product aims to give confidence for those suffering from Parkinson's disease doing day to day tasks. This independency will reduce the amount of carers and medical assistance required from the NHS, whilst allowing those suffering from Parkinson's disease to work for longer. Potentially having a positive effect on the future economy.

## BOURNEMOUTH UNIVERSITY



**NICHOLA FEW**  
BA (Hons) Product Design  
Lugna: Shellfish Cooling Unit

This product aims to reduce the waste of shellfish and other fish projects during catered buffets by preserving food at a safe temperature for a longer period of time.

The food is placed on a removable tray, which is held to the base using magnets. These pull it down to create pressure against thermoelectric Peltier modules, to cool down the tray and food to the required temperature.



**JOSHUA MASUSU**  
BA (Hons) Industrial Design  
Personal Autonomous Mobile Office

This concept design for a fully autonomous car is an extension of the home office. The car serves as a mobile office, enabling commuting time to be used productively for work and business on the move.



**GUGLIELMO PADOVAN**  
BA (Hons) Industrial Design  
Bike for the urban commute

This bike aims to make urban commuting more efficient. The ergonomic design includes a low centre of mass, while the shape of the handlebars relieves stress on the wrists and opens up the chest for better breathing. Colour changing grip tape on the handlebars also uses the heat produced by the hands to change colour, positively reinforcing the exercise.



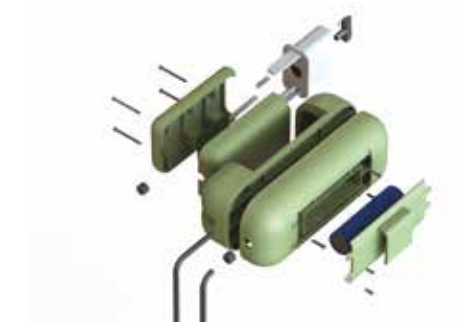
**SHEILA QUINDARA**  
BA (Hons) Industrial Design  
EZ wash

This portable washing machine enables people travelling or camping to wash their undergarments whenever and wherever. The design of the EZ wash is inspired by jellyfish, and aims to reduce water consumption – using a shaking motion to clean garments on the go.



**JACK BYRNE**  
MDes (Hons) Product Design  
Arthritis Paint Aid

8 million people in the UK suffer from Osteoarthritis, which impacts the joints in the hands and feet and causes pain and swelling. The Arthritis Paint Aid helps the user paint but also exercises the hand to improve motor function and strengthen their grip by squeezing the handle to release and replace the brush.



**SAM FRY**  
BSc (Hons) Product Design,  
Non-Chemical Solution for Killing Weeds

This lightweight, handheld product runs from a rechargeable battery, using a heated blade to cut the weed at the base of the stem. This cauterises the remaining stem and root, preventing further growth through inducing heat shock which causes the plant cells to die off.



**JAMES BARAGWANATH**  
BSc (Hons) Product Design  
Ignite – snowboard bindings with snow build-up prevention

This design aims to eliminate the excess build-up of ice on the base of snowboard bindings. It features a flexible base, with a heating element inside to warm the surface and prevent build-up of compressed snow and ice. The heating runs off a rechargeable battery with enough power for a whole day of snowboarding.



**REBEKKA McCAULEY**  
BA (Hons) Product Design  
Ripple: meal-pacing drinking glass for mindful meals

Ripple is a meal-pacing drinking glass which incorporates mindfulness practice to complement the nutritional rehab of binge-eating disorder, by encouraging thoughtful eating behaviour. This is achieved by a 30-second colour changing LED function, integrated in the glass' base, to allow time for the user to identify physiological hunger cues.



**JAMES WHATLEY**  
MDes (Hons) Product Design  
Pura- Air Purification Device

This air purification and sensing device is mountable to any infant pram or travel carrier. The product monitors and detects air pollution levels, from which it can respond to ensure infants are only exposed to safe, clean air. The use of a HEPA air filter along with a negative ionizer allows Pura to quickly and effectively remove up to 95% of harmful pollutants.



**GEORGE HOUNSOME**  
MDes (Hons) Product Design  
Hydrate-Pod

Hydrate-Pod is an outdoor, wall mounted, water fountain designed to be situated in primary school playgrounds. The aim of Hydrate-Pod is to draw attention and attract children through the use of lighting and welcoming shapes to the fountain whilst they are playing in the playground.



**JEAN-BAPTISTE MODLEY**  
BSc (Hons) Product Design  
Alterlux

Alterlux is a versatile desk lamp that can switch between both general and focused light. The light can provide a uniform and continuous bright light, removing shadows. It can then be retracted or adjusted to a smaller and more focused task light more appropriate for simpler daily tasks. Colour temperature and brightness can also be adjusted.

CHELSEA COLLEGE OF ARTS  
CAMBERWELL COLLEGE OF ARTS



**PRISCILLA LUONG**  
BA Textile Design

My research investigates how we can best use or combine technological developments and material innovations with Merino Wool to enhance current offerings.

Through discussions with people who frequently train, I discovered that breathability and a feeling of restriction are two key problem areas in compression garments, therefore the aim of my final project was to look into ways in which sports apparel can provide an athlete with the best possible fit by adapting to their bodies allowing more freedom of movement.

The visuals of my collection are informed by 'lines of nonextension', these are lines on the surface of the skin that indicate the direction in which the skin does not elongate during body movement. Shapes and patterns generated from studying these images and this has influenced not only the cut of my garments, but also the knit structures.



**CHRISTINE ANG SIEW HUI**  
BA (Hons) Interior and Spatial Design  
Barbican Links

Getting lost in the Barbican is unavoidable, despite the existing high walks that are etched with streaks of yellow lines serving as a wayfinding method. 'Barbican Links' bridges the gaps between the existing yellow lines with new lines that lead visitors towards a destination. Inclusivity is incorporated into the design with the entire structure and sensorial experience being accessible to the disabled.



**Daisy Link**  
BA Illustration

These digitally printed 3D characters are a result of experimenting with a simple pallet of shapes within the constraints of a 3D software called Cheetah 3D.

"My idea this year was to create a world of characters to tell stories through. I have brought them to life for my degree show, making animations using Cinema 4D (<https://daisymlink.com/ANIMATIONS>). I have also created a book about one of them called 'Jealous Worm'.



**ALBA SKOTTOWE**  
BA Graphic Design Communication

This year I had the amazing opportunity to have my work printed on the floor outside Farringdon Station as part of Clerkenwell Design Week to celebrate their 10th anniversary.

Another great project was the D&AD New Blood awards, where (as part of the syllabus) we submit work in response to briefs set by major brands such as Adidas, Heinz, Durex, with the opportunity to win an award. In addition to the live briefs we are constantly fed internship opportunities from the tutors, who are themselves industry professionals.



**ZOE WARD**  
BA Graphic Design  
Rural Connections

For my final piece, I have been working with the theme of loneliness and isolation in the Rural location of Ruthin and the surrounding area situated in the Vale of Clwyd, Denbighshire, North Wales. Working within the community to create a card game activity called Rural Connections. Which has been designed to encourage people to talk about their memories, by answering questions on the prompt cards and telling someone else about their experiences, hoping to encourage new conversations and interactions. The card game activity has been designed and constructed based on the requirements for the older generation, therefore, the target audience was specifically considered by focusing on the functionality, layout and overall style and design of the activity so it suits their requirements.



**AMAR GILL**  
BA (Hons) Visual Communication

I started studying art during my time at 6th form, doing a fine art course at my school. I went on to do the Foundation Diploma at Leeds Arts University, specialising in documentary photography. Since then I have specialised in commercial and still life photography, in-turn keeping my practice quite diverse.

My practice is usually inspired or informed by personal experiences, I believe strongly in trying to form connections with the viewer in one way or another. I try to be succinct and minimal in communicating, reducing the intended message to its necessities.

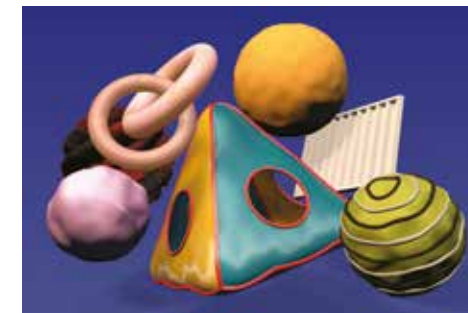


**LUCY SMITH**  
BA (Hons) Visual Communication

I have had an epiphany in the last year. Primarily I based my work around fashion; this led me to research further into the fashion industry and some of its negative ethical and environmental effects. Through having this realisation I used image construction skills I gained through a start-off in fashion and my flare for theatricality to communicate meaningful messages on fast fashion and sustainability in my work; merging these themes with fairytales.

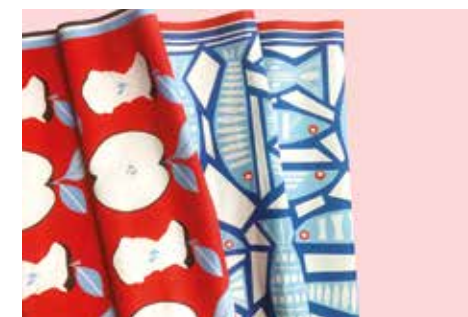
**CHELSEA FAY**  
BA (Hons) Printed Textiles & Surface Pattern Design

Grow | Eat is the newest collection of printed textiles by surface pattern designer, Chelsea Fay. Using a clean, modern aesthetic Chelsea draws inspiration from modern Scandinavian design as well as 20th century American domestic interiors. Through the use of line, shape, and colour, this collection aims to bring positivity into our interior spaces, evoking feelings of warmth, welcome, and belonging.



**LUCY SEYMOUR**  
BA (Hons) Visual Communication

I am a 3D digital designer working with both still and moving image, for live events, screen and print. I enjoy being a catalyst in allowing people to view things in new ways, experimenting with how an object, event, space or issue can be considered with a fresh approach and different perspective; my latest project 'New Forms' places this into focus. For this project, I have deconstructed nostalgic photographs, that transcend generations, and then recomposed them in digital 3D imagery in order to emphasise how children perceive their environments; as more imaginative and mesmerising than they were originally intended by the adults that created them. Being a part of VisCom has pushed me to thoroughly communicate ideas such as this one, questioning to what extent they resonate with and engage the audience, on more than a visually technical level.



LEEDS ARTS UNIVERSITY



**GEORGE WILLIAMS**  
BA (Hons) Graphic Design

I'm often drawn to branding and motion graphics. I believe that with screens becoming more common in everyday life, there are substantial opportunities for brands to communicate much more effectively through motion. This year I've made an effort to develop motion alongside

branding to create powerful visual languages, as it is a part of my practice that I hope to specialise in moving forward. To me, graphic design is communication and problem solving, my work is at its best when it's a balance of both.



**LORNA ROBEY**  
BA (Hons) Printed Textiles & Surface Pattern Design  
Palm Springs Poolside

Palm Springs Poolside is a collection of screen prints exploring rose tinted visions of a sun-soaked California poolside with a sugar sweet palette. Vintage arial photography provides the inspiration and imagery for a retro Americana cool aesthetic. Mid-century brights and modernist architectural geometry complement a sunny outlook on life in Palm Springs.



**NEVE BALL**  
BA (Hons) Graphic Design

A creative focused on developing work driven by concept and research across multiple disciplines within design. Research is a key element within my practice as it informs my conceptual thinking allowing me to push the concepts within my work

further to create more engaging outcomes. My current focus is exploring graphic design within set and film design and production alongside continuing my work within branding and packaging.

LOUGHBOROUGH  
UNIVERSITY

MANCHESTER  
METROPOLITAN  
UNIVERSITY



**MILES KILBURN**  
BA (Hons) Industrial Design and Technology  
**Breathe**

Breathe, a variable compression garment enabled by smart materials to help users to take discreet breaks from chest binding, was developed alongside the transgender community who were directly involved in the design process.

Breathe allows the wearer to take breaks from chest binding with greater ease. Users can discreetly loosen the garment remotely allowing the wearer to take a 'binder break' without removing their clothes.

Breathe contains a smart material woven into the fabric, which when electrified the binder loosens. This can be remotely activated using a controller. When not electrified the binder resets to its fully compressed state.



**HARRY MOORMAN**  
BA (Hons) Industrial Design and Technology  
**Drop**

Drop facilitates the self-administration of prescribed ophthalmic medication for glaucoma patients. It monitors device use and offers reminder prompts to improve adherence and populate patient-specific healthcare records.

Drop works with an eye drop bottle which utilises a number of internal valves to maintain medication sterility for up-to-eight weeks. When the bottle is pumped, a precise drop of medication is dispensed ensuring a consistently sized dose is delivered. The device use and actuations are tracked which allows the system to monitor medication levels. The dock then utilises this smart data to prompt user actions; replacing medications or administering a drop.



**CLAIRE THOMPSON**  
BA (Hons) Industrial Design and Technology  
**Cycle**

Cycle is a reusable pregnancy test and fertility monitor. With current tests being single-use, it aims to reduce the cost and environmental implications imposed on women struggling to conceive when testing for pregnancy and ovulation. Cycle enables users to gain the benefits associated with digital pregnancy and ovulation testing, at a fraction of the cost.

Cycle is used to detect pregnancy and ovulation in females from a urine sample and sends the results to an affiliated app which provides feedback to the user on when is best to try and conceive and when is the best time to test for pregnancy.



**SAM ROGERS**  
BSc (Hons) Product Design and Technology  
**Jet Suit**

Cinematic design of a personal jet suit powered by five turbojet engines. The system is designed from the ground up for the metal and polymer additive manufacturing processes.

The Jet Suit arm mounts transfer thrust load from the turbine engines to the pilot's palm. The pilot's controls are situated within the grip handles.

Sam redesigned the suit from traditional materials to being entirely 3D printed in aluminium, steel and nylon which reduces the time and cost of building the suit.



**HARRY YORK**  
BSc (Hons) Design Engineering  
**Light rail station redesign - Proactive Air Pollutant Reducing Structure**

The Metrolink station redesign is a holistic transport infrastructure concept that aims to combat the air pollution problems that increasing amount of towns and cities are facing. Using effective mosses and lichens to consume the varying degrees of particulate matter, and photosynthesise the air around it, are key parts of the conceptual structure.



**SOURABH BAID**  
BSc (Hons) Product Design and Technology  
**Acctus 'Anywhere' Chair**

Acctus 'Anywhere' Chair, comprising of a combination of one-piece plastic frame and a seat cushion, is designed to be used in every environment. The form chosen for the final design is organic, allowing the chair to blend in multiple settings. The use of live hinges, alongside a stopping mechanism, offers flexibility to the backrest, as well as allowing the user to choose the desired angle of comfort.

COVENTRY UNIVERSITY



**CHARLOTTE ADAMS MDES**  
**Fitness: Encouraging Physical Activity in Children at home**

It is essential to create an active home environment to motivate young children to develop both academically and physically. Fitness creates just that. This product uses an illuminating ball, personal assistant software and a mobile application to encourage competitive family fun, a successful routine and an active home hub.



**JORDAN BASSETT BA**  
**Modular Charter Yacht**

The modular yacht is about creating a more personable charter experience for its guests. A choice of modular compartments to pick from means guests, when booking their holiday can decide on a layout most suitable for their interests and lifestyle.



**BRODIE DART BA**  
**Be.Seen**

Be.Seen uses engineered light to increase safety for urban cyclists especially in daylight hours. Aimed at growing numbers of e-Bike riders whose speeds and distance travelled are increasing. Using an ergonomic bar end design, Semi-automatic turn signals are built in. The lights are positioned for maximum visibility to road users.



**NERESH ANANDAKUMAR BA**  
**MiPROTECT**

With back-packing and travelling on the rise, more and more travellers are falling victim to theft. Through innovative combination of technology, MiProtect aims to protect the user's belongings no matter where it is. The user can track and gain the whereabouts of their belongings through an app, in real time.



**HARRY BEAZER MDES**  
**PLASTICITY**

With pollution levels surrounding plastic waste becoming increasingly serious, Plasticity enables people to clean their own community. Plasticity collects and compacts plastic waste so it can be collected and sorted.



**JAMES DUGUID BA**  
**Duo-Monorail**

A dual direction Mag-lev monorail system operating along one single rail. Individual trains run along the top and bottom of the rail, travelling northbound and southbound respectively, taking up half the space of a conventional train system.



**OLIVER BALL BA**  
**Land Rover ARC – Antarctic Research Concept**

With the growing desire for experiences and the obligation to improve the world's environment. LR ARC offers an authentic experience and a solution to controlled tourism in Antarctica, harnessing the ingenuity of future generations to set in motion a template for a cleaner future through engaging in research and environmental causes.



**LAURENCE CHEN – ZIXI CHEN BA**  
**Extremer**

'Extremer' which originated in 'extreme', is a vehicle that can do film and documentary shooting in extreme environment and is also my 'dream' vehicle as I was the chairman of NJUST's student television station. 'Extremer' provides a shooting 'base' for two people for ten days' working and living with the help of UAV.



**HYERIM KANG BA**  
**Zoe: Flexible Head Dog Clipper**

Zoe offers a comfortable and safe home dog grooming system. Considering the dog's stress of essential trimming based on the dog health and ergonomics for the dog owner to produce a better grooming experience. With flexible head technology and UV charge station, it will be used wherever the dog's favourite place at home.



**CHANGEON JO BA**  
**Kochlea**

UK's having growing population of homeless people. Government's accommodation project is running but still, there are not many places available for the people. To get in to their life, homeless people are having security, budget and residential problems. To give them one step forward to their better future, Kochlea gives you a solution.



**ZEHENG LI BA**  
**Heart Journey**

This project aims at creating a more suitable way for teenagers to experience a journey without parents from one city to another. My main propose is to combine the youth hotel with the travel vehicle to provide a convenient journey for teenagers and make their travel easier



**JOE GARDINER BA**  
**Cradle**

Current surfboard transportation methods don't allow for a surfboard to be immediately put away when the surfer returns from the sea. By designing a system allowing the surfboard to be put away quickly & easily after a surf, the risk of potential damage to a surfboard is reduced and the amount of time a surfer spends packing away minimised.



**OLIVER REYNOLDS BA**  
**Le Mans 2035**

The project aims to give an insight into the future of Le Mans racing. Understanding the connection between driver and machine and how far technology can affect performance.



**PUSHINDER SINGH BA**  
**HAAT.**

HAAT. is a product designed to enhance the user experience of safety equipment. With the use of new materials and technology, the workplace can be made into a safer working environment. Through inspiration from biomimicry the internal design has improved to enhance comfort and usability.



**LUKE NEWMAN BA**  
**Dryr**

Dryr is a touchless car drying system that safely sheets water from freshly cleaned paintwork without inflicting swirl marks or imperfections. Dryr not only sheets water but is also perfect for removing trapped water from tight areas such as wheels, wing mirrors and shut lines.

COVENTRY



PLYMOUTH COLLEGE OF ART

PLYMOUTH COLLEGE OF ART



**COLIN WILKES**  
**BA (Hons) 3D DESIGN CRAFTS**  
**Unify**  
 Artist Colin Wilkes' previous career as a builder armed him with an enviable understanding of materials and traditional skills. His Unify collection

sees him uniting rugged concrete with delicate blown glass to create mixed media sculptures.

He is influenced by the work of Luba Bakicova, for her use of concrete and Scott Slagerman for his ideas on incorporating the mould as part of the final piece, and for the vibrant colours they both use in their sculptures.



**ANNA WYCLIFFE-JONES**  
**BA (Hons) Interior Decoration, Design & Styling**  
**Inclusive Home Living**

Anna's designs for an accessible home for the elderly are carefully considered and delicately subtle, with a focus on design for social impact. With the aim to allow the older generation to age with dignity in their own homes, her thorough research and case studies have allowed her to discreetly integrate solutions to anticipated issues such as deteriorating sight and mobility.

By designing a bespoke product for one of her case study subjects, allowing him to indulge in his love of reading despite no longer being able to hold a book, Anna's passion for designing to improve quality of life shines through.



**HELENA DORE**  
**BA (HONS) ILLUSTRATION**  
**My Forest**

Illustrator and designer Helena Doré won 3rd place in the Children's Cover Award category of Penguin Random House UK's 2018 Student Design Award. For the Degree Shows 2019 Helena has created 'My Forest', a children's book based around deforestation, and an illustrated book cover for Sir David Attenborough's 40th anniversary edition of 'Life on Earth', celebrating 40 species discovered or declared extinct between 1979 and 2019.

'My Forest' is a children's book based around the deforestation of bamboo forests and the negative impact that this has on pandas and other endemic species in the area. Made from 100% recycled and recyclable materials, Heléna illustrated, wrote and hand-bound 'My Forest' using traditional Chinese binding techniques, with some bamboo illustrations contributed by friends and family to represent the need for collaboration to push for positive environmental change.

Illustrated using a standard Bic biro pen, Heléna's 'Life on Earth' included illustrations of 19 living species that had been discovered and named after Sir David Attenborough in the last 40 years, alongside 20 species that have been declared extinct by the IUCN between 1979 and 2019.



**EWAN POGSON**  
**BA (Hons) Interior Decoration, Design & Styling**  
**SoulStorexWearth**



Ewan Pogson's work for the 2019 Degree Shows focuses on improving the mental and physical wellbeing of consumers in central London through the use of biophilic design. With the aim of protecting the planet through the use of sustainable local materials, Ewan has created concept designs for an ethical, zero-waste health and beauty pop-up store, titled SoulStorexWearth.

Influenced by bold and impactful designs, Ewan is an interior designer with a passion for design with purpose and social change for the conservation of our environment. Ewan said: "I've always been influenced by bold, impactful design, such as the artistic works of Gustav Klimt, particularly his abstract depictions of natural forms."

**CAVAN WRIGHT**  
**BA (HONS) 3D DESIGN CRAFTS**  
**Sculptural glassware**

Specialising in sculptural glassware, Cavan's recent work (below left) is inspired by the inner mechanics of the heart, amalgamated with drooping patterns seen in botany, particularly banana plants and fuchsia flowers. This combination represents Cavan's thoughts and curiosity within hot glass. His sculptures emerge from the rhythm of glass-blowing processes and the effects of gravity, echoing similar processes that occur naturally in plants. Cavan's installation for the Degree Shows 2019 is an imaginary cyclical system represented by water running through glass. "Glass for me is a dance, a dance where I feel connected to this material like it's alive as I am. I don't see myself as the maker, more of a guide for the glass. My inspirations are people like Martin Janecy, Dante Marioni, James Devereux and Rob Stern, artists who are pushing the limits of glassmaking. What inspires me more than anything in glass is the community and the people who have taught me. Plymouth College of Art has helped me find my flow and inner practitioner, now I want to show the world the possibilities of this magical medium and how far it can be pushed."



**ANGELA DATSERI**  
**BA (HONS)**  
**ILLUSTRATION**

Illustrator and designer Angela Datseri creates colorful and vibrant illustrations, working with a variety of subjects, gathering inspiration from everyday life, fashion,

people and nature. Following current trends in the market and combining traditional and digital working practices, she focuses on editorial illustration and design, in addition to recently finding a passion for surface pattern design and the application of her illustrations on physical products.

For the 2019 Degree Shows, Angela created a bespoke dress after printing her illustrations on fabric, working with photographers and filmmakers to model her own designs in a promotional shoot. To create and shoot the dress Angela collaborated in the studio and on location with BA (Hons) Fashion student Rose Garcia, BA (Hons) Commercial Photography for Fashion, Advertising and Editorial student Mi Kelly, and BA (Hons) Film students Joe Dunn and Luke Matthews.



**FIONA MELVILLE**  
**BA (HONS) GRAPHIC DESIGN**  
**Woman to Woman**

For the 2019 Degree Shows, BA (Hons) Graphic Design student Fiona Melville is fundraising to provide personal alarms for homeless women in Plymouth, using her graphic design skills to raise awareness of the issue of violence and sexual violence against homeless women, in response to the recorded increase in homelessness across the UK. With a campaign titled 'Woman to Woman', Fiona is collaborating with Shekinah, a Devon and Cornwall based charity that provides opportunities for people in recovery or seeking recovery, including recovery from homelessness, and with The Zone, a Plymouth-based charity that provides free and confidential information and support to young people.



**THYRA BANKOLE**  
**BA (HONS) GRAPHIC DESIGN**  
**Melanated Magazine**

BA (Hons) Graphic Design student Thyra Bankole has created Melanated Magazine, a print publication designed to showcase and highlight women of colour in the UK creative industry. 21-year-old Thyra, who grew up in Greenwich, London, hopes that Melanated Magazine can act as a catalyst for change by creating exposure that leads to more work being commissioned from women of colour, as well as giving young women of colour access to a wider range of role models in the creative industries.

Speaking of the genesis of the idea, Thyra said: "Until we're more visible at every level of the creative industries, there'll always be a need for more work to showcase women of colour. Melanated Magazine is my contribution to the national conversation that we need to have about valuing the hard work of black woman and showing role models for the next generation hoping to enter the industry!"

**AMY OTTLEY**  
**BA (HONS) ILLUSTRATION**  
**Ruby Box**

Amy Ottley has created 'Ruby Box' for the 2019 Degree Shows, a vibrant menstrual subscription service that would include a subscriber donation to the period poverty organisation Bloody Good Period. The overall project includes illustrations, packaging and branding for vitamins, herbal teas and chocolate, and a period friendly yoga guide.

Inspired by research into the severity and growing rates of period poverty in the UK, 'Ruby Box' is designed to deliver everything a woman would need for her period and is named after the girl who gave Amy her first sanitary pad when she found herself unprepared in their school bathroom. For every Ruby Box purchased, the concept includes funding for a secondary basic 'Ruby Box' that would be sent to Bloody Good Period for distribution in shelters across London and Leeds.



## UNIVERSITY OF PLYMOUTH



**DI ZHU**  
BA(Hons) 3D Design: Spatial & Interior Designer  
**Closer**  
**If Animals = Humans (Interior design for a cat-lover)**

I have designed a space that worked efficiently for both animals and humans alike.

Some owners don't have much interaction with their cats due to a lack of understanding of their cats' true needs. I explored ways to improve the quality of life of both owners and pets, making owners and pets participate in each other's daily life. Eventually, this will make a positive cycle which will affect all aspects of people's life such as work, study, and relationships, looking to inspire people's concept of coexistence, no matter the species.

In the future, I will continue to look into the positive effects that spaces have on people and animals.



**JENNA BAGNALL**  
BA(Hons) 3D Design: Product Design  
**i-Glo**  
**Infant Light**

I-Glo is a visual stimulant for newborns using light. The product features five interchangeable domes which allow for the light to adapt as a baby's eyesight develops. The system consists of a black and white, orange, red, green and blue. Each will be implemented at different stages of the child's development to aid with brain and visual development. This product is designed to grow as the child does.

For me design is about evolving by challenging the way we think, live and use products. Designing for the future, designing experiences, and focusing specifically on how products can better our lifestyles. Past projects have taught me to think strategically but always experiment, design limitlessly. The enjoyment I gain from design is through the process and understanding of a product, that is functionally beneficial and provoke feeling within the user. For me, we design with purpose, our planet and us in mind; to never stop asking ourselves: "Why are we designing this?"

Jenna won the "One to Watch" from ND Colour Associates prize.



**SHANNON GARVEY**  
BA(Hons) 3D Design: Spatial & Interior Design  
**Can interior design reduce bullying?**  
**Human centred interiors**

Schools are no longer the places of safety they were once seen as, with much of the violence stemming from bullying. Inspired by my research into the design of safe spaces, and violence prevention, I have designed a spatial model primarily for educational institutions that challenges traditional teaching and promotes a more innovative pedagogical approach.

The four geometric spaces created are based on different learning activities; one-way communication, discussion, task orientated study, and individual study. Separating these activities increases the ability to recognise specific types of bullying more effectively, and the open-plan layout increases natural surveillance, to deter bullying and violent behaviours.

At the core of my thinking process is a human-centred approach, and I enjoy creating organically-influenced spaces. I also enjoy the challenge of blending my designs into the surrounding environment, and taking inspiration from the site, whether that be the history, aesthetic, materiality or atmosphere and injecting it into my contemporary designs. I take great pride in rendering my designs to bring my ideas to life; communicating technical aspects of the designs, and visualising atmosphere and user interaction.



**HUW EVANS**  
BA(Hons) 3D Design: Designer Maker  
**Concertina**  
**Fluid wood**

Using first hand exploration, I systematically cut solid timber, turning it into a versatile, semi-fluid material which moves in multiple directions. Using this I created the Concertina range, comprising furniture and home décor items.

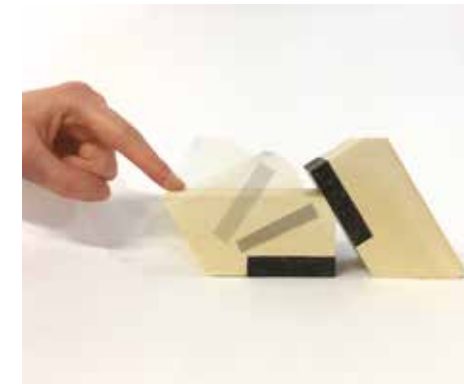
As a material led maker, I set out to understand a material's capability and seeking to extract that potential. I discovered the impact of subtle changes in thickness, length and frequency of cuts on the material's flexibility.

Huw won the ND Conran Shop Design Award first prize.



**HOLLIE OWEN**  
BA(Hons) 3D Design: Designer Maker  
**Loop Hangers**

Inspired by research into freehand steam bending, these hangers helped Hollie to be shortlisted to be the Young Designer of the Year 2019 by Mixology.



**NATHAN SNELL**  
BA(Hons) 3D Design: Product Design  
**Tactile Alarm Clock**  
**De-stressing daily life**

Negative interactions with objects frequently occur in our daily lives. The alarm clock is one of the first and last objects that we interact with, but it has a number of negative connotations. With this in mind, I looked to design a product that turned a negative experience, into a more positive interaction. In doing this, the aim was to aid organisation, encourage routine, and reduce the feelings of stress.

When considering stress within the home, an alarm in the morning is a hated routine. This is why I set out to create a product that turned this negative interaction into something pleasurable. I turned the alarm clock into a giant toggle switch, to use it as a vehicle to demonstrate how physical interaction might give user satisfaction and an enjoyable experience. It had to communicate its function with a straightforward visual language, a sculptural form, to form a practical part of your day, promoting positive mental health. With this approach, we can apply it to all kinds of switching and adjustments to de-stress daily life.



**SOPHIE COILEY**  
BA(Hons) 3D Design: Designer Maker  
**Adding value to post-consumer waste**

I use materials from the household waste stream with low economic value and low material status to create a body of containers, artefacts and product packaging that represent the transformation from waste product to aesthetic resource of higher value. The pieces are created to have a temporary life, an unexpected interruption from the journey of discarded packaging.

Humans have had a relationship with paper for thousands of years and there is a familiarity and comfort to touch these objects. Using domestic waste materials as a resource I am using my design practice to comment on perceptions of longevity, value, status, consumption and personal responsibility.

RAVENSBORNE UNIVERSITY LONDON —  
BA (HONS) PRODUCT DESIGN



**ALEKSANDRA BOROWSKA**  
BA (Hons) Product Design  
Empathise

There over 700,000 people on the autism spectrum in the UK, who experience issues ranging from alexithymia to difficulty processing information. Aleksandra designed an 'empathy app' named Empathise for architects and designers, helping them to understand autism during their design process and allowing them to experience some of the issues that people on the autism spectrum face in their daily lives.



**ALEX DEVANE**  
BA (Hons) Product Design  
U

'U' is a modular glasses design by Alex Devane. Personalisation is an important way to express your individuality and plays a key role when buying new glasses. Usually, you are forced to choose between formal and fun. With 'U' you can have both — fun and colourful one moment, smart and professional the next!



**HOLLY SYLVESTER**  
BA (Hons) Product Design  
Monster Earphones Packaging

Holly Sylvester's 'Monster Earphones Packaging' provides a fun, colourful alternative to unsustainable plastic clamshell packaging, taking into account storage, security, and branding concerns.



**JOSIE SKINNER**  
BA (Hons) Product Design  
SmartHob

Josie Skinner's 'SmartHob' is a space-saving, user-friendly re-imagining of induction cooking. Her tabletop design features an electromagnetic induction hob which can be removed when not in use. The idea developed when Josie conducted research which found that a majority of people report struggling with kitchen surface space.



**ALEX DEVANE, SALOME SANDRIN AND ZOFIA CHRABASZCZ**  
BA (Hons) Product Design  
Gaius

'Gaius' is an innovative packaging and service design for a new street art materials subscription. Modular packaging and a unique unboxing experience become part of the brand, aimed at encouraging young artists to discover the power of street art.



**ADAM JOHANNESON**  
BA (Hons)  
Communication Design

Referencing the past and presenting it through my own perspective has become a core part of my creative approach. My project creates a visually engaging tourist guide for the Faroe Islands; the place from which my heritage originates.



**JARED CAMERON**  
BA (Hons)  
Communication Design

My work is rooted in a certain interest in the unexpected. There is something engaging and interesting in the idea of not knowing how a final image, video or sound piece will turn out in the end.



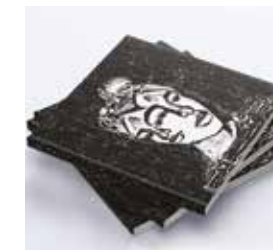
**CHARLOTTE GORDINE**  
Three Dimensional Design  
Aberdeen

'Aberdeen' is a light design that puts a small city like Aberdeen instead of a metropole into focus. As globalisation and social media have come to play a pivotal role in present lives, I feel true design should bring the natural, authentic and real back into focus without negating the technical advance by including the senses. This is what I am trying to do with my design. By using materials like textured paper, made from the papermill in Stoneywood, and wood sourced from Aberdeenshire, the design denotes meaning and connects to the local landscape and history.



**EMMASOFIA SALMINEN**  
BA (Hons)  
Communication Design

I feed my projects from my endless curiosity of other people and their weirdness as well as my obsession for fun facts. My work always tends to thematically revolve around organising objects and people into compositionally delicious tributes to excessive detail.



**ELENI KARAVIA**  
BA (Hons)  
Communication Design

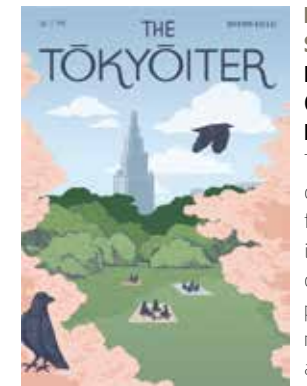
My practise investigates the therapeutic effectiveness of creative activities on mental health. Creativity reduces anxiety, depression, and stress and can also help process trauma. It has been a very effective tool to releasing my emotions by expressing them.



**ALISON DUNCAN**  
Three-Dimensional Design  
Stratis Collection

This is a series of ceramic vessels that are inspired by the colours, layers and patterns found in nature. They are slip cast using coloured slip, poured in layers and then hand carved. The aim of my work is to provide an element of nature into our homes and remind people to focus on the joy that nature can bring.

GRAY'S SCHOOL OF ART



**LAURA FAYE SYMCOX**  
BA (Hons)  
Communication Design

This year my work drew influence from Japanese illustration and design. I used printmaking and mural painting alongside digital and traditional illustrative processes to explore how my style translates across different mediums.



**HANNAH SNEDDON**  
BA (Hons)  
Communication Design

Simplicity and abstract graphic shapes are prevalent in my style of design, contrasting with a vibrant colour palette. Aberdeen has also been a dominant inspiration for my studio work whilst focusing on improving my skills with typography through branding and poster design.



**ANDREW WOOLHOUSE.**  
Three Dimensional Design.  
Gestalt

Gestalt is a series of jewellery kits aimed to be composed entirely of recycled and reclaimed plastic materials, showcasing the beauty of a material which, nowadays, receives mainly damaging views. The pieces are completely modular, and the interactive aspects allow consumers to get hands on and build a relationship with the material.

SOLENT UNIVERSITY

STAFFORDSHIRE UNIVERSITY



**PHILIPPE CROZE**  
BA (Hons) Product Design  
Cfelct

Cfelct is a new way of recording personal stress data by using galvanic skin response and a time-lapse camera pendant to record daily activity.

The data captured is revisited in a moment of reflection at the end of the day; re-framing our relationship with time, stress and technology.



**DAYLE CHAPPORY**  
BA (Hons) Product Design  
HAPPY BALANCE

HAPPY BALANCE is a new way of encouraging children between the ages of 7-11 to disconnect with their smart devices and engage in more cognitively rich experiences.

The main unit provides audio visual feedback on the amount of time spent on technology and what is required to redress the balance with being away from their tech.



**JOSH STEEL**  
BA (Hons) Product Design  
PolyBin

PolyBin is a smart domestic recycling system. Using smart IoT and AI recognition technology the PolyBin is able to assist the user which types of plastic are able to be recycled and therefore reduce the amount of single use plastics that make it into the waste stream.



**JACK SYKES**  
BA (Hons) Product Design  
OXYGEN

OXYGEN is a personal air quality monitoring product that enables live and crowd sourced data to be collected and inform the user of the quality of their immediate surroundings. The unit is portable and records pollen, dirt particle concentration and temperature to build a picture of the air quality wherever the unit is taken.



**GEORGIA FRANCIS**  
BA (Hons) Product Design  
CLEANIT

CLEANIT is a product service system approach to the ongoing and burgeoning issue of waste plastics within farms and the rural environment. The system includes a cleaning and shredding unit which produces clean and separated plastic which can be re-sold and provide extra income for the farming community.



**IZZAZ AKBAR**  
BA (Hons) Transport Design  
2025 Tuk Tuk Concept

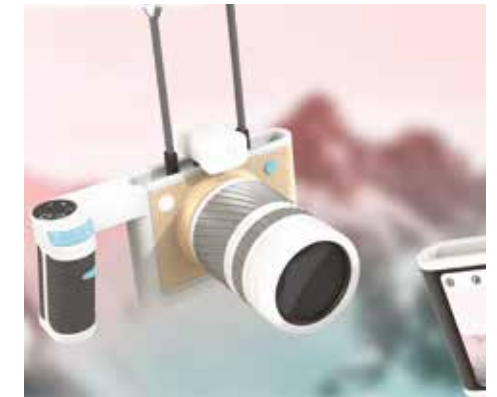
In Asia the Tuk Tuk is used as a taxi taking people from A to B, however they are quite uncomfortable and cramped when full. My Tuk Tuk Concept is designed to be more spacious and comfortable so that the passengers and the driver have a better experience.



**LIAM BULL**  
BA (Hons) Product Design  
Hexball

Hexball is a brand new, fast paced, unique and exciting sport. Using the latest in modern technology as the key to allow fluid play, an improved scoring and decision making system.

This new style of play makes for a fairer sport that is more engaging and enjoyable for all.



**ELI DARLEY**  
BA (Hons) Product Design  
Google Pixel Camera

A modular camera for the connected lives we lead. With add-ons to suit any purpose from vlogging to drone photography and a redesigned connected UI that allows cloud backups, on device editing and sharing. With a reimagined charging system and lens mount it's the perfect step up from a smartphone for first time photographers.



**JAMES ROUND BA**  
MA Industrial Design  
AEREM IGNIS

The Ignis is a combined air purifier and heater that delivers an enhanced home environment with a soothing flame and heat effect of a fire, allowing the user to control their smart home using Ignis as the hub. The Ignis is part of the Aerem range of clean design.



**JAMES SHAKESPEARE**  
BA (Hons) Transport Design  
Lyft Autonomous Shuttle

The new, faster way to get across the city. The Lyft Autonomous Shuttle is an on demand aerial transport solution to combat the congestion caused by road traffic, saving time for the commuter and reducing the environmental impact of travelling.



**AAYUSH TULI**  
BA (Hons) Transport Design  
SINGULARITY AUTONOMOUS BIKE

The Singularity is an all-electric autonomous bike for discerning individuals who travel within megacities. It features an aircraft-inspired cockpit and provides a chauffeur-like experience due to its autonomy and features a gyroscope which counteracts gravity delivering a "floating on air" experience. The Singularity is an inspiring design with a new level of premium mobility.

NOTTINGHAM TRENT UNIVERSITY

NOTTINGHAM TRENT UNIVERSITY



**ADAM FRAME**  
BA Furniture and Product Design  
**Oxide**

Oxide is a floor lamp designed to bring an emphasis to the patination of metals. Using a retro style studio shade to frame the blue brass patina, the shade emits a warm ambient light.

The elegant base supports the shade and the feet are capped with brass tips to complement the brass interior of the shade.



**BRYONY HANCOCK**  
BA Furniture and Product Design  
**Cumulus**

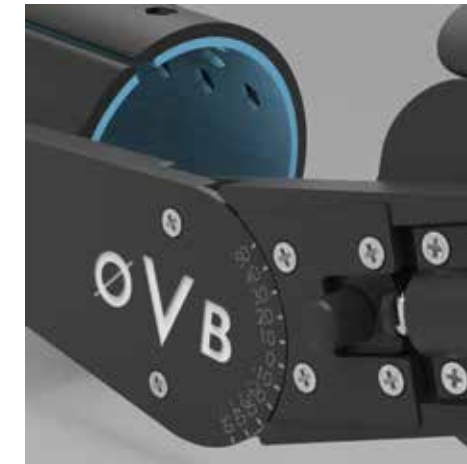
Cumulus is a flexible seating system for co-working spaces and office lounges. Inspired by pebbles, clouds and hills, the user can choose from three backrests, a lounging support, two tables and a power adaptation. Depending which side users sit on, the 165° seat angle either directs people towards each other, or away, creating convenient seating that facilitates both collaborative and solitary working.

Project in collaboration with Bute Fabrics.



**FERGUS VAUX**  
BA Product Design  
**Insulata**

Insulata, a thermal-regulating cocoon for low birth-weight babies, provides a low-cost alternative to sophisticated incubators used in Neonatal Intensive Care Units (NICUs). Developing countries do not have the resources needed to establish NICUs which are used in developed countries for the management of low birth weight infants. A simple papoose style design combined with technically advanced materials meets the urgent demand for a low-cost solution. Insulata is a simple wrap over design using specially layered fabrics that allow the baby's warmth to be conserved, whilst using no electricity.



**OLIVIA KILLEYA**  
BSC (HONS) Product Design  
**OV B arm brace**

The OV B arm brace is a bespoke orthotic device for cycling, designed to aid a road cyclist in his return to a bike after suffering a Brachial Plexus Injury, leaving his right arm partially paralysed.

The custom brace incorporates an adjustable mechanism to allow the user to change arm positions while cycling. The brace offers improved rigidity and comfort to the arm, giving the user the support required while road cycling.



**KIERAN MEEHAN**  
BA Furniture and Product Design  
**Kálamos**

Kálamos is a sideboard inspired by 19th and 20th century caned furniture. The piece is hand crafted, with rattan being woven in a traditional six-way cane pattern. Its bow fronted design allows for the woven rattan pattern to flow across the entire piece, sweeping around the sides creating a seamless look.

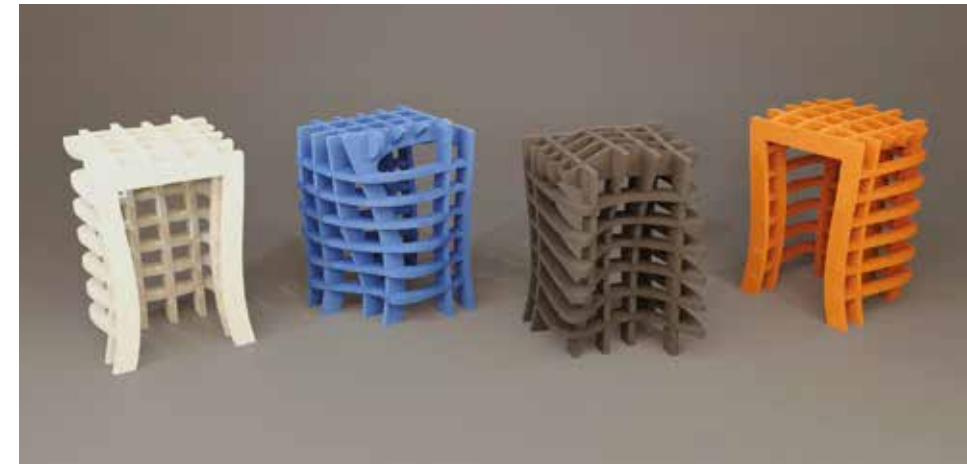


**KATY THOMAS**  
BA Product Design  
**CRE8**

CRE8 is a sustainable learning toy for children designed to encourage positive social interactions between players. The toy encourages players to Get CRE8TIVE! using 8 different types of building blocks. The cards are designed to promote social interactions as players work together to produce different builds. The toy allows players to unleash their creativity and enter a world of imagination together to create fun and lasting memories of play.



Green Concept Award  
Selection 2019



**MATTHEW WILDE**  
BA Furniture and Product Design  
**Music Stools**

Music Stools is a project experimenting with the concept of changing shape in response to different data. For Music Stools this data is derived from the frequencies that make up the melody of a song. An open source melody extraction programme was used to retrieve frequencies at regular intervals from a music file. These values then dictate the displacement of points along the top and back of the stool. The result is a unique design that captures visually a section of melody and that can be created in minutes.

## NOTTINGHAM TRENT UNIVERSITY

## NOTTINGHAM TRENT UNIVERSITY



**WILL WALTER**  
BA Product Design  
Climati

Our world is changing. By 2050, dangerous heatwaves of 38.5 degrees, like the one we experienced in 2018, will become the new norm. Climati is wearable technology that helps you acclimatise to warmer temperatures. The modular device, which can be worn in a variety of ways, tracks you and your environment, and activates cooling when you need it most.



**CASEY NOBLE**  
BA (hons) Product Design  
Peg desk lamp

The Peg desk lamp aims to make the function of turning a lamp on and off more satisfying; akin to placing a needle onto a vinyl record. The lamp uses a magnetic 'peg' to control two brightness settings, with a magnetised off position to keep the movable part safe when not in use.



**DANIEL PEARCE**  
BA Product Design  
Food Chain

Food Chain is a bag and jacket designed for the rapidly growing market of online food delivery e.g. Deliveroo. Food-Chain will supply rider uniforms to the incumbent companies. The jacket is designed for the cyclist's needs and prioritises visibility, breathability and water resistance. The bag solves current problems including temperature retention and size adjustability.



**MELISSA DALY**  
BA Product design,  
Alma

Alma is a seat to work at your desk, a lap tray to eat your dinner upon, a bedside table or perhaps somewhere you simply store blankets inside. However you choose to use Alma within your home the reversible lid aids in this adaptability. Alma has not been designed to be a throw away item, but to carry you through life wherever that may be.

**DAN MART**  
BA (Hons) Product Design  
Oru

Oru represents a change in the way furniture is designed for the home, due to the rise in small-space living. Its elegant design and unique folding method provide a contemporary space-saving chair for lounge environments. The chair's ergonomics and use of upholstery offer a more comfortable design than existing folding chairs.



**DESSLAVA IVANOVA**  
BA (Hons) Product Design  
Hydro

Hydroponics is a way of growing plants in water and nutrient solution, instead of soil. HYDRO is a range of hydroponic plant pots, which come in a kit, allowing the user to create their own personalised herb garden at home. It has the advantage of more efficient plant growth with less effort from the user as the plants utilise all resources and don't need to be watered daily.



**SEBASTIEN HOLT**  
BA (Hons) Product Design  
Riff

Riff aims to slow down passing commuters through an interactive musical installation and therefore aid in increasing social interaction. There are findings to show that there is an increased level of distrust amongst urban dwellers and their community and therefore the aim of the project is to make them feel more comfortable in their surroundings.



**JAMES LAMBERT**  
BA(Hons) Product Design  
Rejuvenate

Rejuvenate is a stool which is made using offcuts from sawmills around the country in order to cut back on wasted materials produced by processing timber. The stool has been designed to promote the use of recycled materials in furniture, whilst removing the stigma attached.



**SOPHIE ALMOND**  
BA Product Design  
Acorn Tea Set

Reflecting the deep history and rich culture of British tea, the Acorn Tea set aims to bring back the important event of tea drinking in a modern, relaxed way. Social pressures leave our lives hectic and disorganised we rarely stop to take a minute for ourselves or chat with friends. This tea set aims to change that.

Acorn comprises a teapot and 4 mugs of two different designs allowing variety in the experience. The wooden part helps this set stand out on the market along with having practical benefits to the user.

TEESSIDE UNIVERSITY



**ALICE CHURCH**  
**Product Design**  
**Circuit Phlebotomy Trolley**  
 Phlebotomy, the process of collecting blood. Solving real life problems, Circuit is ergonomically designed creating user friendly experiences, allowing phlebotomists to work more efficiently. Including a range of unique selling points resolving issues identified through extensive research. Manufactured using PVC, bringing benefits when sterilising and is also lightweight to manoeuvre.



**BEN MUIR**  
**Product Design**  
 This project refines the coffee making process back to its original roots with a more modern twist, delivering a full and personal coffee experience allowing the user to truly enjoy the term from bean to cup.



**DOMINIC THOMAS**  
**Product Design**  
 Hummel Puresport is the all new portable air purification system for the modern athlete. Compact and extremely capable, Hummel Puresport is a must have for the team or individual looking to gain every single advantage to push them to the top. Simple to use, simple to store – Hummel Puresport.



**JOEL ROBSON**  
**Product Design**  
 "Bringing convenience and favour into the home, the Keurig Water Burst offers an alternative to traditional carbonated drinks, by using unique pods containing fresh fruit cordial, alcohol or other flavourings, drinks are blended together with chilled carbonated water to create a sharp refreshing drinks on demand"



**YOU LONG**  
**Product Design**  
 The Bird Café not only allows you to feed and encourage our garden visitors but also capture their presence via discreetly placed cameras which can be accessed simply by an app on your phone or tablet.

Subscribe online [www.newdesignmagazine.co.uk](http://www.newdesignmagazine.co.uk)

