

2.5 Gallon Pressure Tank

307133N

(Non-ASME Design)

EN

50 psi (350 kPa, 3.5 bar) Maximum Working Pressure

Part No. 171226, Series C (shown)

Basic portable pressure tank

Part No. 223833

with Dual Regulators



Important Safety Instructions

Read all warnings and instructions in this manual.
Save these instructions.

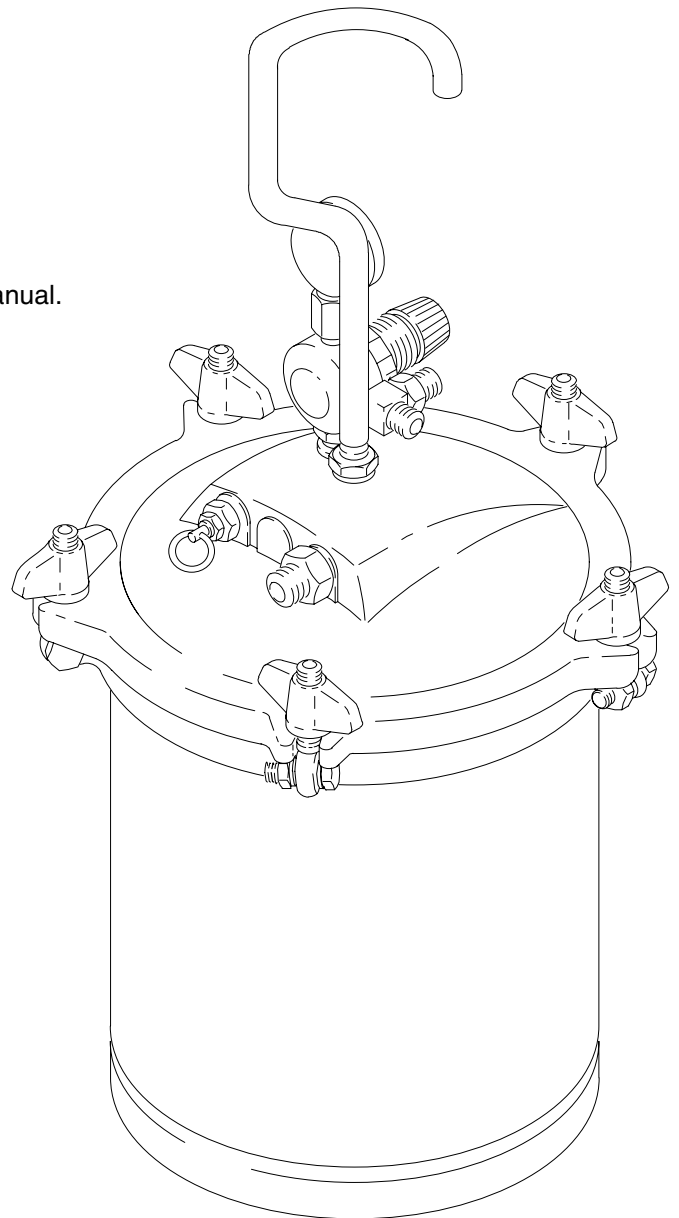


Table of Contents

Warnings	2
Installation	4
Operation	6
Parts	8
Technical Data	9
Warranty	10
Graco Information	10

Symbols

Warning Symbol



This symbol alerts you to the possibility of serious injury or death if you do not follow the instructions.

Caution Symbol



This symbol alerts you to the possibility of damage to or destruction of equipment if you do not follow the corresponding instructions.

! WARNING



INSTRUCTIONS

EQUIPMENT MISUSE HAZARD

Equipment misuse can cause the equipment to rupture or malfunction and result in serious injury.

- This equipment is for professional use only.
- Read all instruction manuals, tags, and labels before operating the equipment.
- Use the equipment only for its intended purpose. If you are uncertain about usage, call your Graco distributor.
- Do not alter or modify this equipment. Use only genuine Graco parts and accessories.
- Check equipment daily. Repair or replace worn or damaged parts immediately.
- Do not exceed the maximum working pressure of the lowest rated system component. Refer to the **Technical Data** on page 9 for the maximum working pressure of this equipment.
- Use fluids and solvents which are compatible with the equipment wetted parts. Refer to the **Technical Data** section of all equipment manuals. Read the fluid and solvent manufacturer's warnings.
- Do not exceed the maximum working pressure of the lowest rated system component. This equipment has a **50 psi (350 kPa MPa, 3.5 bar) maximum working pressure**.
- Do not kink or over bend hoses or use hoses to pull equipment.
- Route hoses away from traffic areas, sharp edges, moving parts, and hot surfaces. Do not expose Graco hoses to temperatures above 82°C (180°F) or below -40°C (-40°F).
- Wear hearing protection when operating this equipment.
- Do not lift pressurized equipment.
- Comply with all applicable local, state, and national fire, electrical, and safety regulations.
- Never use 1.1.1-trichloroethane, methylene chloride, other halogenated hydrocarbon solvents or fluids containing such solvents in pressurized aluminum equipment. Such use could result in a chemical reaction, with the possibility of explosion.

WARNING



PRESSURIZED EQUIPMENT HAZARD

Spray from the gun, hose leaks, or ruptured components can splash fluid in the eyes or on the skin and cause serious injury.

- Do not stop or deflect fluid leaks with your hand, body, glove, or rag.
- Follow the **Pressure Relief Procedure** on page 6 whenever you: are instructed to relieve the pressure; stop spraying; clean, check, or service the equipment; and install or clean the fluid nozzle.
- Tighten all the fluid connections before operating the equipment.
- Check the hoses, tubes, and couplings daily. Replace worn, damaged, or loose parts immediately. Permanently coupled hoses cannot be repaired; replace the entire hose.



FIRE AND EXPLOSION HAZARD

Improper grounding, poor ventilation, open flames or sparks can cause a hazardous condition and result in a fire or explosion and serious injury.

- Ground all equipment in the work area. Refer to **Grounding** on page 4.
- If there is any static sparking or you feel an electric shock while using this equipment, **stop spraying immediately**. Do not use the equipment until you identify and correct the problem.
- Provide fresh air ventilation to avoid the buildup of flammable fumes from solvents or the fluid being sprayed.
- Keep the spray area free of debris, including solvent, rags, and gasoline.
- Electrically disconnect all equipment in the spray area.
- Extinguish all open flames or pilot lights in the spray area.
- Do not smoke in the spray area.
- Do not turn on or off any light switch in the spray area while operating or if fumes are present.
- Do not operate a gasoline engine in the spray area.
- Keep a fire extinguisher in the work area.



TOXIC FLUID HAZARD

Hazardous fluid or toxic fumes can cause serious injury or death if splashed in the eyes or on the skin, inhaled, or swallowed.

- Know the specific hazards of the fluid you are using.
- Store hazardous fluid in an approved container. Dispose of hazardous fluid according to all local, state and national guidelines.
- Always wear protective eyewear, gloves, clothing and respirator as recommended by the fluid and solvent manufacturer.

Installation

Grounding

WARNING

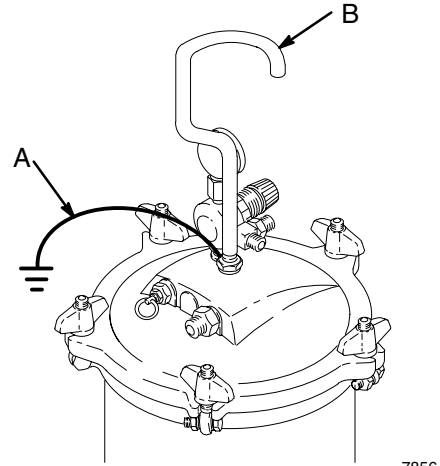


FIRE AND EXPLOSION HAZARD

Before operating the pump, ground the system as explained below. Also read the section **FIRE AND EXPLOSION HAZARD** on page 3.

1. *Pump:* connect the ground wire (A) firmly to a metal part of the tank such as the base of the carry handle (B). Connect the other end of the wire to a true earth ground. See Fig. 1. Order Part No. 237569 Ground Wire and Clamp.
2. *Air compressor:* according to the manufacturer's recommendations.
3. *Object being sprayed:* according to local code.
4. *All solvent pails used when flushing,* according to local code. Use only metal pails, which are conductive. Do not place the pail on a non-conductive surface, such as paper or cardboard, which interrupts the grounding continuity.

5. *To maintain grounding continuity when flushing or relieving pressure,* always hold a metal part of the gun firmly to the side of a grounded metal pail, then trigger the gun.



7856

Fig. 1

Installation

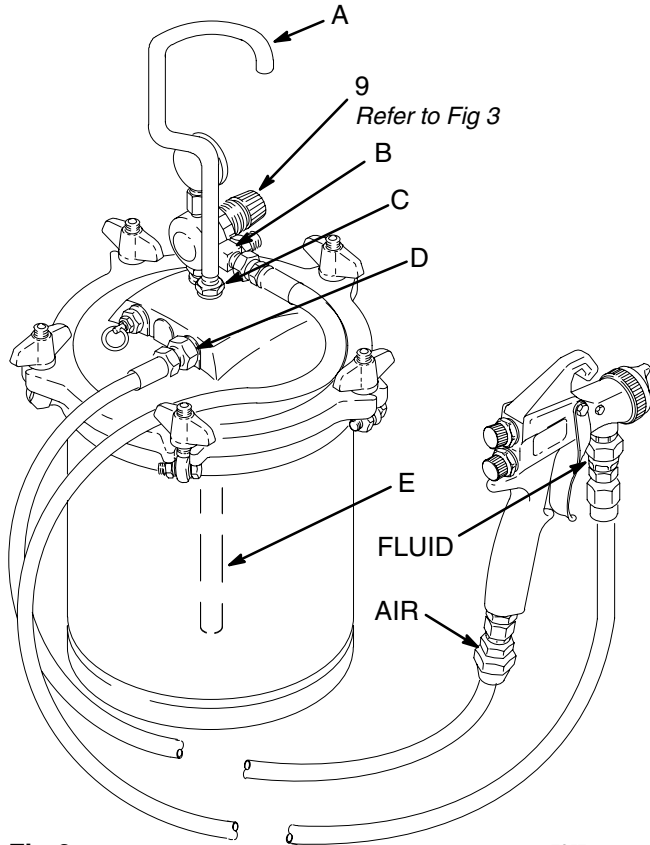


Fig 2

7857

About the single-regulated tank (Model 171226)

When the air pressure to the tank and the spray gun atomizing air are controlled by one regulator, the same pressure is delivered to both.

About the dual-regulated tank (Model 223883)

For separate control of the atomizing air, a separate atomizing air regulator for the tank is supplied. See **To add an air atomizing regulator**, below.

NOTE: Use thread sealant on all male threads.

All tanks

Install an air filter upstream from the regulator to remove dirt and moisture from your air supply.

Screw the riser tube (E) into the pipe fitting on the bottom side of the tank cover. See Fig 1.

Single-regulated tank

Assemble the air regulator (9) as shown in Fig 2. Screw the regulator assembly into the port marked AIR on the tank cover.

Screw the handle (A) and the nut (C) onto the cover, and tighten them securely. See Fig 1.

Connect an air supply hose to the 1/4 npt air inlet nipple (9d). Connect the gun's air atomizing hose tee fitting (9e). Connect the gun's fluid hose tee fitting (9e) to the adapter (D), at the point marked PAINT. See Fig 1.

To add an air atomizing regulator

Remove the handle (A) and nut (C). Remove the tank regulator assembly (9) and assemble the second regulator to it as shown in Fig 2.

Screw the dual regulator assembly into the tank cover port marked AIR. Reinstall the handle (A) and nut (C).

Connect the air supply hose to the nipple (9d). Connect gun's air atomizing hose to the nipple (10). Connect the gun's fluid hose to the adapter (D), at the point marked PAINT. See Fig 1.

Install the gun

Connect the air atomizing and fluid hoses to the gun. See Fig 1.

Grounding

Ground the sprayer as instructed on page 3 before operating it.

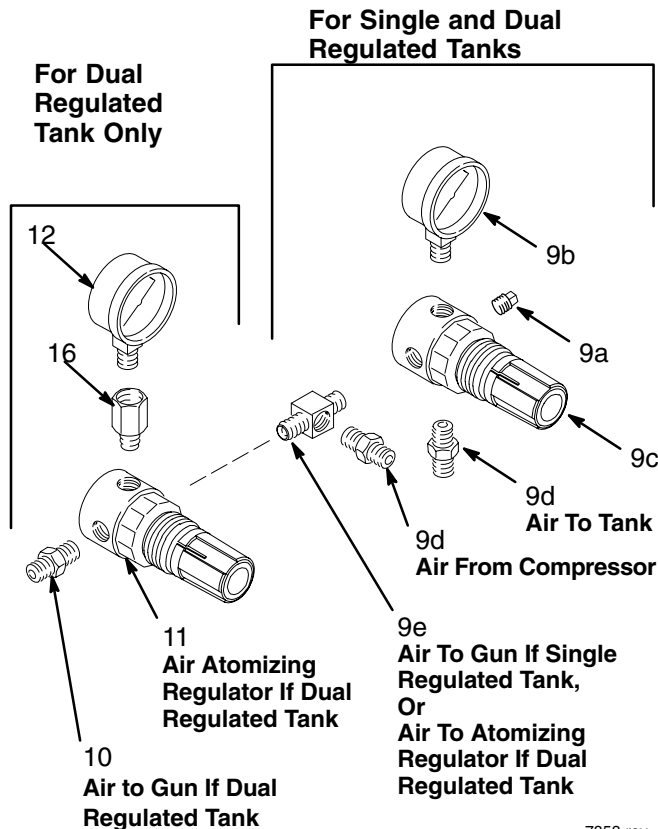


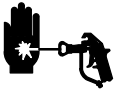
Fig 3

7858 rev

Operation

Pressure Relief Procedure

⚠ WARNING



INJECTION HAZARD

Fluid under high pressure can be injected through the skin and cause serious injury. To reduce the risk of an injury from injection, splashing fluid, or moving parts, follow the **Pressure Relief Procedure** whenever you:

- are instructed to relieve the pressure,
- stop spraying,
- check or service any of the system equipment,
- or install or clean the spray tip.

1. Shut off the air supply to the tank.
2. Open the safety relief valve (1b) by lifting its ring.
3. Wait until there is not air escaping through the valve before unscrewing the wing nuts to remove the tank cover.
4. Leave the safety valve open until you have reinstalled the cover.

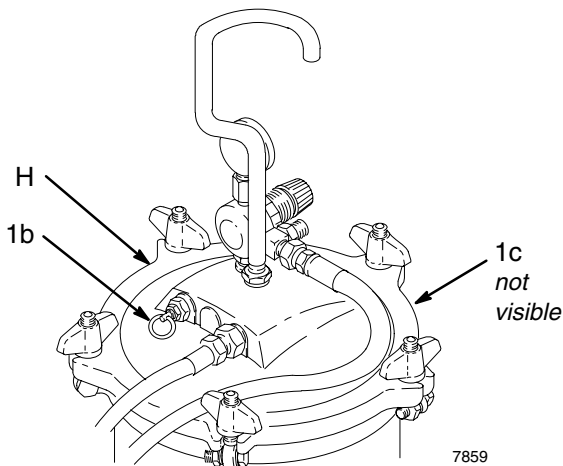


Fig 4

⚠ WARNING

To reduce the risk of serious injury whenever you are instructed to relieve pressure, always follow the **Pressure Relief Procedure** on page 6.

⚠ CAUTION

The pressure tank and cover are coated for corrosion resistance. Be sure the paint and solvent you use are compatible with the pressure tank coating and wetted parts.

Prepare the paint or other coating

Follow the manufacturer's recommendations. Strain the paint to remove particles or sediment that could clog the spray gun and hose.

To fill the tank

Follow the **Pressure Relief Procedure Warning**, above. Loosen the wing nuts and remove the cover (H). Fill the tank with the paint, leaving at least 2 in. (51 mm) between the paint level and the tank cover.

⚠ CAUTION

Overfilling or tipping the tank causes the paint to enter the air line and clog the regulator, hose, and gun. Do not exceed the 2.5 gallon tank capacity.

Using a one gallon paint can

A one gallon paint can may be placed inside the pressure tank.

Install the tank cover

Replace the cover and evenly hand tighten the wing nuts. Overtightening the nuts may cause the gasket (1c) to squeeze out. The gasket is needed to properly seal the cover and tank.

Operation

Adjusting the air regulators

WARNING

To reduce the risk of overpressurizing the tank, which could result in component rupture and cause serious injury:

Never exceed 50 psi (350 kPa, 3.5 bar) **MAXIMUM AIR INPUT PRESSURE** to the tank.

Never operate the pressure tank without the tee (9e) in place. The tee acts as a restrictor to limit the air pressure to the tank.

Turn the air regulator knob(s) counterclockwise all the way to off. Turn on the master air supply. Adjust the air regulators to the required pressure. Always use the lowest pressure necessary to obtain the desired results. Lower pressures help reduce spray tip wear.

Vertical and horizontal reach

Do not operate the spray gun more than 10 ft (3.1 m) above the paint tank. Longer lengths of air and paint hose may be used between the pressure tank and the spray gun for greater horizontal working range.

Cleaning and maintenance

Follow the **Pressure Relief Procedure Warning**. Loosen the wing nuts and remove the cover (H). Loosen the retaining ring of the spray gun air cap about three turns. Hold a rag over the air cap and trigger the gun to force the paint back through the hose and into the tank. Empty the tank.

Pour a compatible solvent into the tank.

CAUTION

Be sure the solvent you use is compatible with the fluid being sprayed and the hose material.

Replace the cover and tighten the wing nuts evenly and securely. Remove the spray gun air cap. Turn on the air supply. Trigger the spray gun into a waste container until clean solvent comes from the gun. Empty the solvent and wipe the inside of the tank and the equipment with a solvent-dampened rag.

Remove the riser tube (E) and clean it thoroughly.

Keep the safety relief valve (1b) clean and in working order. The relief valve is preset and locked and will release air pressure automatically if it exceeds 50 psi (3.5 bar).

WARNING

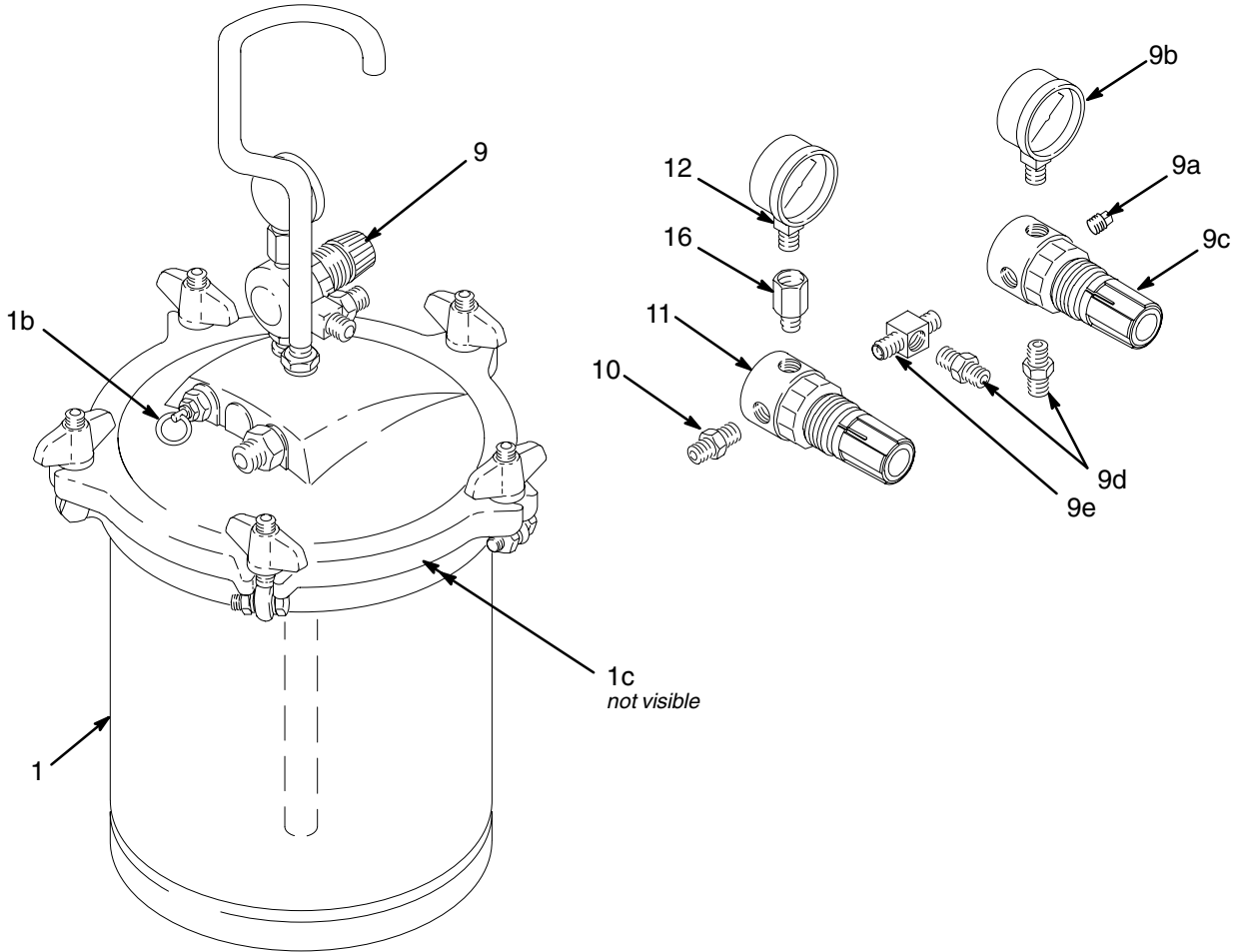
Check the release pressure of the safety relief valve (1b) weekly. If this setting has changed or it paint comes in contact with the valve, remove and clean the valve thoroughly. If the valve still doesn't work properly, replace it with a new one.

DO NOT TRY TO RESET THE VALVE.

Keep the bottom of the wing nuts well greased so they will screw down freely.

See the separate instruction manuals for the care and maintenance of the spray gun and air regulators.

Parts



7860 rev

Model 171226, Series C
Basic Pressure Tank with Single Regulator
 Includes items 1–9

Model 223833
with Dual Regulators
 Includes items 1–12, 16

Ref No.	Part No.	Description	Qty
1	176462	BARE PRESSURE TANK Includes items 1a–1c	1
1a	110399	TANK LINER, low-density polyethylene (<i>not shown</i>); Package of 5	1
	112077	Package of 5	
	112078	Package of 25	
1b	103996	VALVE, safety relief; 50 psi (3.5 bar)	1
1c	244953	GASKET, cover, polyethylene (pkg of 3)	1

Ref No.	Part No.	Description	Qty
9	214979	REGULATOR ASSEMBLY Includes items 9a–9e	1
9a	100139	. PLUG, 1/8 npt	1
9b	104655	. GAUGE, air pressure; 0–60 psi (0–42. bar)	1
9c	104815	. AIR REGULATOR <i>See manual 307167 for parts</i>	1
9d	151519	. NIPPLE, hex reducing; 1/8 npt x 1/4 npt	1
9e	181107	. TEE, reducing; 1/8 npt(m) x 1/4 npt(m) x 1/8 npt(f)	1
10	156971	NIPPLE	1
11	111804	AIR REGULATOR <i>See manual 308167 for parts</i>	1
12	160430	PRESSURE GAUGE	1
16	159840	ADAPTER	1

Technical Data

Tank capacity	2.5 gallons (9.5 liters)
Maximum working pressure	50 psi (350 kPa, 3.5 bar)
Relief valve setting	50 psi (350 kPa, 3.5 bar)
Air inlet size	1/4 npt(m)
Fluid outlet size	3/8 npsm(m)
Air outlet size	1/4 npt(m)
Height	21 in. (533 mm)
Width	11.25 in. (286 mm)
Weight	11 lb (5 kg)
Wetted parts	Coated Aluminum, brass, steel, coated steel, buna-n, polyethylene

Graco Standard Warranty

Graco warrants all equipment manufactured by Graco and bearing its name to be free from defects in material and workmanship on the date of sale to the original purchaser for use. With the exception of any special, extended, or limited warranty published by Graco, Graco will, for a period of twelve months from the date of sale, repair or replace any part of the equipment determined by Graco to be defective. This warranty applies only when the equipment is installed, operated and maintained in accordance with Graco's written recommendations.

This warranty does not cover, and Graco shall not be liable for general wear and tear, or any malfunction, damage or wear caused by faulty installation, misapplication, abrasion, corrosion, inadequate or improper maintenance, negligence, accident, tampering, or substitution of non-Graco component parts. Nor shall Graco be liable for malfunction, damage or wear caused by the incompatibility of Graco equipment with structures, accessories, equipment or materials not supplied by Graco, or the improper design, manufacture, installation, operation or maintenance of structures, accessories, equipment or materials not supplied by Graco.

This warranty is conditioned upon the prepaid return of the equipment claimed to be defective to an authorized Graco distributor for verification of the claimed defect. If the claimed defect is verified, Graco will repair or replace free of charge any defective parts. The equipment will be returned to the original purchaser transportation prepaid. If inspection of the equipment does not disclose any defect in material or workmanship, repairs will be made at a reasonable charge, which charges may include the costs of parts, labor, and transportation.

THIS WARRANTY IS EXCLUSIVE, AND IS IN LIEU OF ANY OTHER WARRANTIES, EXPRESS OR IMPLIED, INCLUDING BUT NOT LIMITED TO WARRANTY OF MERCHANTABILITY OR WARRANTY OF FITNESS FOR A PARTICULAR PURPOSE.

Graco's sole obligation and buyer's sole remedy for any breach of warranty shall be as set forth above. The buyer agrees that no other remedy (including, but not limited to, incidental or consequential damages for lost profits, lost sales, injury to person or property, or any other incidental or consequential loss) shall be available. Any action for breach of warranty must be brought within two (2) years of the date of sale.

Graco makes no warranty, and disclaims all implied warranties of merchantability and fitness for a particular purpose in connection with accessories, equipment, materials or components sold but not manufactured by Graco. These items sold, but not manufactured by Graco (such as electric motors, switches, hose, etc.), are subject to the warranty, if any, of their manufacturer. Graco will provide purchaser with reasonable assistance in making any claim for breach of these warranties.

In no event will Graco be liable for indirect, incidental, special or consequential damages resulting from Graco supplying equipment hereunder, or the furnishing, performance, or use of any products or other goods sold hereto, whether due to a breach of contract, breach of warranty, the negligence of Graco, or otherwise.

FOR GRACO CANADA CUSTOMERS

The parties acknowledge that they have required that the present document, as well as all documents, notices and legal proceedings entered into, given or instituted pursuant hereto or relating directly or indirectly hereto, be drawn up in English. Les parties reconnaissent avoir convenu que la rédaction du présente document sera en Anglais, ainsi que tous documents, avis et procédures judiciaires exécutés, donnés ou intentés à la suite de ou en rapport, directement ou indirectement, avec les procédures concernées.

Graco Information

TO PLACE AN ORDER, contact your Graco distributor, or call one of the following numbers to identify the distributor closest to you:

1-800-328-0211 Toll Free

612-623-6921

612-378-3505 Fax

All written and visual data contained in this document reflects the latest product information available at the time of publication. Graco reserves the right to make changes at any time without notice.

Original Instructions. This manual contains English. MM 307133

Graco Headquarters: Minneapolis

International Offices: Belgium, China, Japan, Korea

GRACO INC. AND SUBSIDIARIES • P.O. BOX 1441 • MINNEAPOLIS, MN 55440-1441 • USA

Copyright 1974, Graco Inc. All Graco manufacturing locations are registered to ISO 9001.

www.graco.com

Revised 12/2011