

# Recovery Requires Debris Removal



# Debris Removal



# Session Overview

(A) **Importance** to Recovery

(B) Adopting a **Process**

(C) **Actions** to Execute

(D) **Conclusion**



# Importance of Debris Plan

- Reduces time needed to identify debris management options.
- Reduces danger by identifying
  - hazards
  - who will mitigate
  - how to mitigate
- Saves money by avoiding rushed decisions that could result in costly mistakes.





# Importance of Debris Plan

- **Reduces time** needed to identify debris management options.
- **Reduces danger** by identifying
  - hazards
  - who will mitigate
  - how to mitigate
- **Saves money** by avoiding rushed decisions that could result in costly mistakes.



# Template for Debris Removal

FEMA  
Handout

SWANA  
Handout

Seattle  
Checklist Handout

Typically, the debris removal recovery phase begins after the emergency access routes are cleared and police, firefighters, and other first responders have the necessary access

# Priorities for Debris Removal

**#1 priority:** Clear debris from key roads

**#2 priority:** access to critical facilities

**#3 priority:** Eliminate debris related threats to health and safety



# Debris Types: Household

- Furniture
- White goods
- Food (Biohazards)





# Debris Types: Construction

- Concrete
- Asphalt
- Metal
- Brick
- Wood
- Drywall



# Review: Debris Types

Byproducts of Disaster Event



- Old Tires
- Old Appliances
- Vegetative
- Sediment
- Soil
- Biohazards

# Calculating Debris

$$\text{Length} \times \text{Width} \times S \times 0.20 \times \text{VCM} = \text{CY}$$

27

*S* = number of storeys

*VCM* = Vegetative Cover

FEMA conducted an empirical study following Hurricane Floyd in North Carolina in 1999, and developed a formula for estimating debris associated with demolished single family residences

Table for Single Family, Single Story Homes

Typical House (Square Feet)	Vegetative Cover Multiplier			
	None	Light (1.1)	Medium (1.3)	Heavy (1.5)
1000 SF	200 CY	220 CY	260 CY	300 CY
1200 SF	240 CY	264 CY	312 CY	360 CY
1400 SF	280 CY	308 CY	364 CY	420 CY
1600 SF	320 CY	352 CY	416 CY	480 CY
1800 SF	360 CY	396 CY	468 CY	540 CY
2000 SF	400 CY	440 CY	520 CY	600 CY
2200 SF	440 CY	484 CY	572 CY	660 CY
2400 SF	480 CY	528 CY	624 CY	720 CY
2600 SF	520 CY	572 CY	676 CY	780 CY

# Calculating Debris

To estimate the amount of debris generated by a building in cubic yards



$$\text{Length} \times \text{Width} \times \text{Height} \times 0.33 = \text{CY}$$

27



# Calculating Debris

To estimate the amount of debris generated by a building in cubic yards



$$\underline{\text{Length} \times \text{Width} \times \text{Height} \times 0.33 = \text{CY}}$$

27

# Calculating Debris

Table for Single Family, Single Story Homes

Typical House (Square Feet)	Vegetative Cover Multiplier			
	None	Light (1.1)	Medium (1.25)	Heavy (1.5)
1000 SF	200 CY	220 CY	260 CY	300 CY
1200 SF	240 CY	264 CY	312 CY	360 CY
1400 SF	280 CY	308 CY	364 CY	420 CY
1600 SF	320 CY	352 CY	416 CY	480 CY
1800 SF	360 CY	396 CY	468 CY	540 CY
2000 SF	400 CY	440 CY	520 CY	600 CY
2200 SF	440 CY	484 CY	572 CY	660 CY
2400 SF	480 CY	528 CY	624 CY	720 CY
2600 SF	520 CY	572 CY	676 CY	780 CY

~~Length x Width x Height x 0.33 = CY~~

~~Length x Width x S x 0.20 x VCM = CY~~



# Damage Assessment

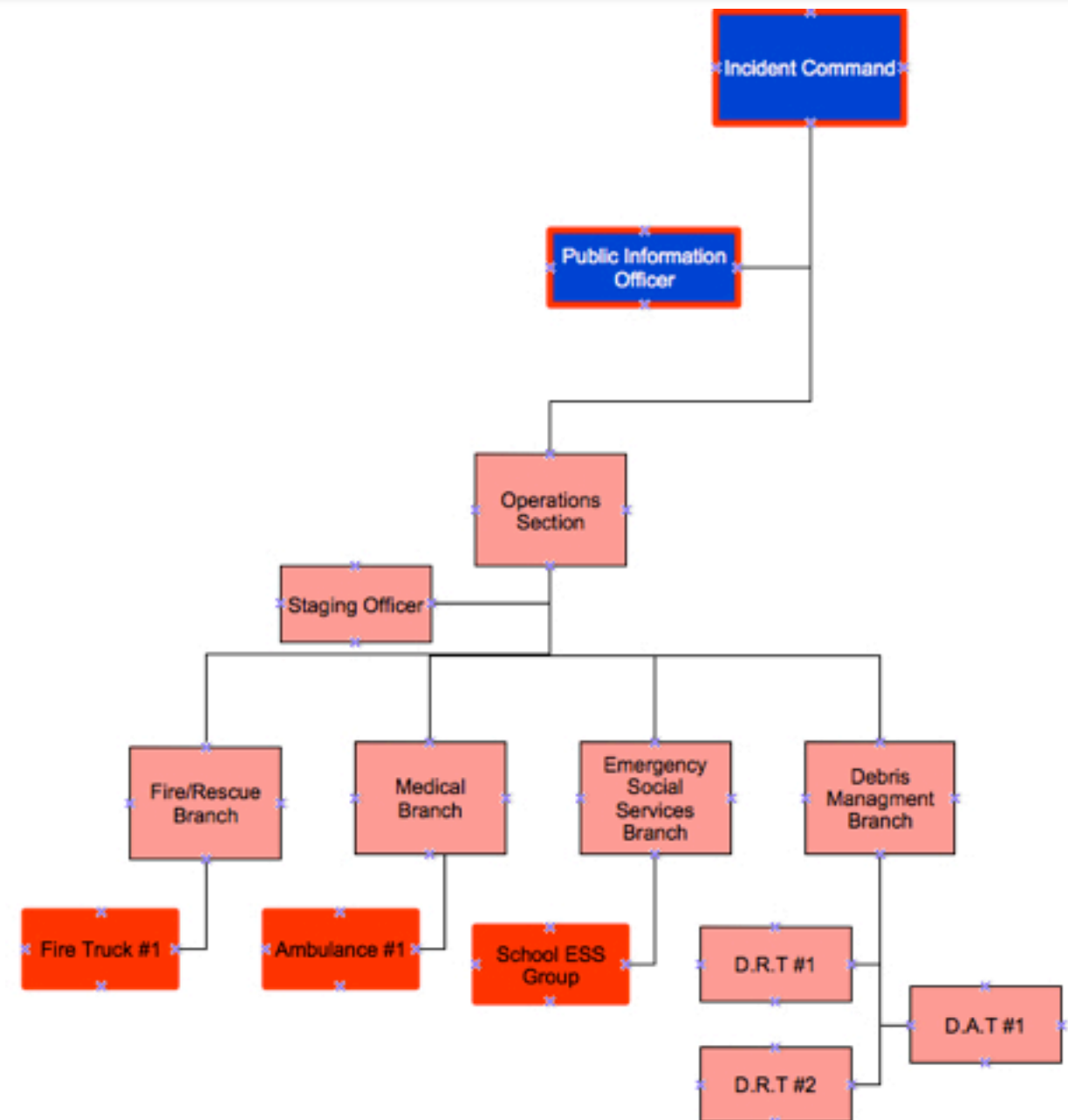
- Situational Awareness
- Establish Priorities
- Efficient Resource Use





# Damage Assessment

- Situational Awareness
- Establish Priorities
- Efficient Resource Use





# Ushahidi: Situational Awareness

- Haiti Earthquake

the most common use was in support of **situational awareness** for strategic, **operational** and **tactical** organizations.

- 20,000 reports in first hours
- 25,000 per day



# Ushahidi: Local Experience



Hey, there's a mini lake in front of my place. #saskfloods

60 438 days ago

=

Page 1 of 16 pages

Total Reports	Avg Reports Per Day	% Verified
315	0.57	92.38%

01:31 Sep 10, [UNVERIFIED]

cial dock used for boats and float planes that has been badly damaged. The dock has been damaged on lake athapapuskow...  
creighton sask

23:49 Jul 08, [UNVERIFIED]

ing water and flooding land

sd Lake 274, they have uneducated men making civil engineering decisions regarding roads and a disaster as these barely...

19:07 Jul 05, [VERIFIED]

in Sask. largely unknown

before the provincial government will be able to tally its flood bill, but it's sure to exceed what was several government...  
skatchewan

# Summary

- **Reduces time** needed to identify debris management options.
- **Reduces danger** by identifying
  - hazards
  - who will mitigate
  - how to mitigate
- **Saves money** by avoiding rushed decisions that could result in costly mistakes.



Debris  
Estimating  
Field Guide

FEMA 329 / September 2010



King County  
Always at your service



<http://www.fema.gov/pdf/government/grant/pa/demagde.pdf>

[http://www.fema.gov/pdf/government/grant/pa/fema\\_329\\_debris\\_estimating.pdf](http://www.fema.gov/pdf/government/grant/pa/fema_329_debris_estimating.pdf)

<http://www.epa.gov/osw/conservation/imr/cdm/debris.htm>

<http://www.kingcounty.gov/safety/prepare/EmergencyManagementProfessionals/Plans/~ /media/safety/prepare/documents/Debris/DebrisPlanReviewChecklist.ashx>

<http://www.swananorthernlights.org/>

<http://www.sepa.ca/planning-tools.html>

[ray.unrau@saskatoon.ca](mailto:ray.unrau@saskatoon.ca)