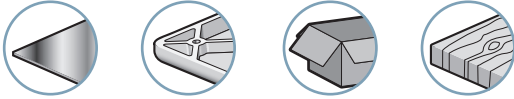


Branch-specific applications



Advantages

- Ideal for high throughput applications
- Automatic blow-off
- Can be adapted to all branches
- Reduced wiring and easy-to-use
- Optimized performance for handling all types of objects
- Adjustable blow-off flow
- Light and compact
- Silent operation
- No clogging

Description

GVCS series vacuum pumps are identical in design to the GVC series. Their specific characteristic is the control of vacuum generation by integrated valve.

The valve control function speeds up response time and facilitates wiring by integrating all the functions. For longer blow-off, please refer to the GVPD range.

The addition of a 1/8 gas fitting to the capacity allows an additional compressed air tank to be connected in order to increase blow-off capacity e.g. for large diameter suction pads.

Characteristics

model	Ø nozzle (mm)	air consumed (NI/min)	maximum vacuum (%)		air drawn in (NI/min)	
			T	N	T	N
GVCS 12	1.2	67	75	90	63	45
GVCS 15	1.5	100	75	90	95	70

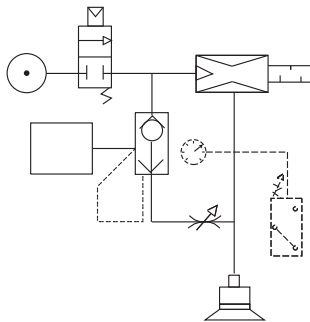
Versions N and T are delivered with silencer S as standard.

Evacuation time in seconds per liter

% vacuum	10		20		30		40		50		60		70		80		85	
versions	T	N	T	N	T	N	T	N	T	N	T	N	T	N	T	N	T	N
GVCS 12	0.10	0.14	0.22	0.30	0.37	0.49	0.55	0.71	0.78	0.97	1.16	1.33	1.92	1.81	-	2.66	-	3.42
GVCS 15	0.07	0.09	0.15	0.20	0.24	0.32	0.36	0.46	0.52	0.63	0.77	0.85	1.27	1.16	-	1.71	-	2.20

Specifications

Supply	Non-lubricated filtered air, 2 to 6 bar
Optimum pressure	4 bar
Material	POM - 2017A – Cu Zn – PA6 15% FG
Temperature	0 to 60°C / 32 to 140°F
Suction rate	Adjusted by flow restrictor
Number of valve operations	15 million
Operating frequency	Maximum 2 Hertz
Function	N.C.
	N.O. in 24V DC on request



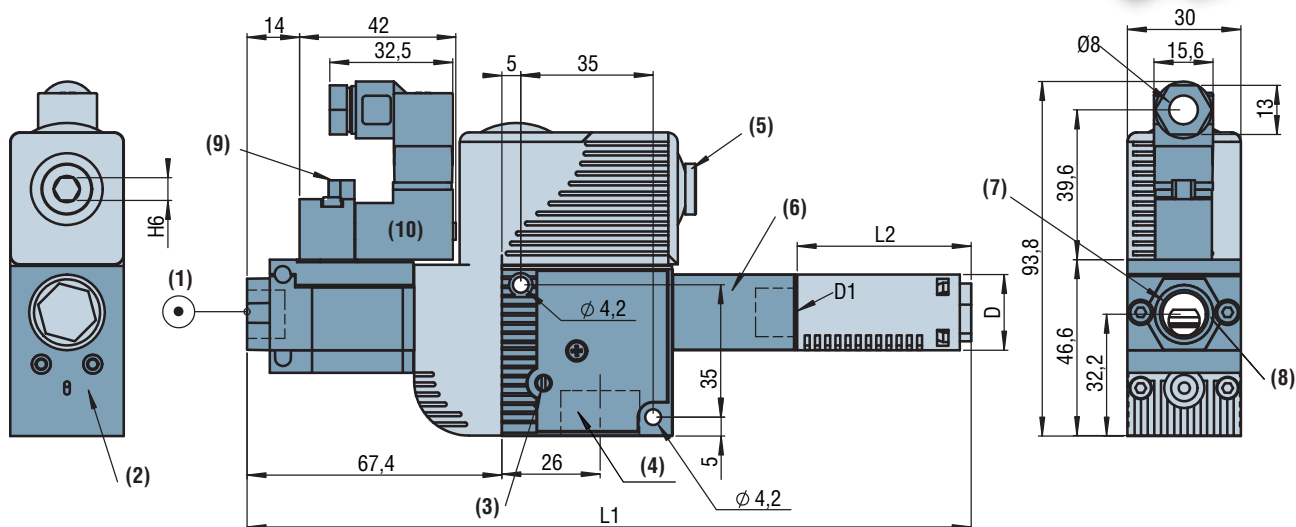
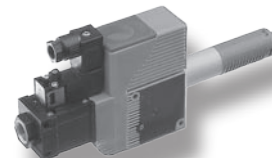
For all orders, please specify:

Model + Nozzle diameter + Characteristic + Silencer + Fitting + Control

1: Model	2: Nozzle diameter	3: Characteristic	4: Silencer	5: C.A. fitting	6: Controls
GVCS	12 1.2 mm 15 1.5 mm	T 75% vacuum N 90% vacuum	- Without silencer S Diffuser K Through-type	14 1/4 G BSPP 68 6x8 calibrated tube	P1 pneumatic E1 24V DC N.C. E Other voltages on request

E.g. **GVCS 15 T K 68 P1**

(GVCS series electrically controlled vacuum pump with automatic blow-off, nozzle diameter 1.5mm, 75% vacuum with through type silencer, 6x8 calibrated tube fitting and pneumatic control)



- | | |
|-------------------------------------|-------------------------------|
| (1) 4 bar compressed air tank | (6) Exhaust |
| (2) Option mounting zone | (7) 1/4 Gas or fast 6x8 |
| (3) Blow-off adjustment | (8) Compressed air connection |
| (4) Vacuum 1/2 Gas | (9) Manual control |
| (5) 1/8 gas plug for blow-off boost | (10) Automatic control |

models	D	D1	L1 ⁽¹⁾	L2	
	(mm)	(Gas)	(mm)	S	K
GVCS 12	20	1/4	181.4	45	68
GVCS 15	20	1/4	191.4	45	68

(1) L1 with standard silencer (S).

Additional information

Options

- Vacuum switches see page 8/16.
- Other options see pages 8/17 and 8/18.

Curves

See page 8/19.