

CELEBRATING
40
YEARS
1979 - 2019



Product Guide
2019

 **ProAc**
perfectly natural

For forty years, Stewart Tyler, founder and Chairman of ProAc, has been designing and manufacturing high quality loudspeakers, initially through Celef Audio, but since 1979 under the ProAc brand name.

For over twenty five years, the now famous Response range has come to represent the pinnacle of audio excellence, whilst the more affordable

Tablette and Studio models have introduced the ProAc sound to a wider audience.

A consistent design philosophy was adopted from the outset; that transparency, minimal colouration, pinpoint imagery, exceptional detail and overall smoothness are vital to the creation of music as a lifelike experience.

Tyler's meticulous approach to sonic design has been applied to the build quality of each ProAc model, where only the finest components are used; each new model reflecting the very leading edge of audio technology. Indeed many models now incorporate dedicated drive units using our own basket, cone and magnet assemblies. Drive unit

performance is fine-tuned through expensive and sophisticated crossover networks.

Every ProAc loudspeaker is hand-crafted, with our technicians individually responsible for the building and testing of each unit, from the flagship K Series models to the diminutive Tablette. Build quality alone is unsurpassed, each cabinet being meticulously constructed, damped and finished in real wood veneer.

ProAc loudspeakers now grace the homes of many thousands of music and home cinema lovers worldwide and the brand has become a byword for sonic excellence. The success of the Tablette series as well as the award winning Studio and Response models, together with the introduction of the K Series has broadened the company's appeal even further.

We do not make cheap loudspeakers and certainly do not produce cheap sounds

Happily, many thousands of audiophiles worldwide agree with our philosophy.



CONTENTS

TABLETTE RANGE

TABLETTE 10	page 5
TABLETTE 10 SIGNATURE	page 7

STUDIO RANGE

STUDIO MONITOR 100	page 9
---------------------------	--------

CENTRE CHANNEL RANGE

CENTRE VOICE	page 11
---------------------	---------

RESPONSE RANGE

RESPONSE DB3	page 13
RESPONSE DB1	page 15
RESPONSE D2/D/R	page 17
RESPONSE DT8	page 19
RESPONSE D20/D/R	page 21
RESPONSE D30/DS/RS	page 23
RESPONSE D48/D/R	page 25

K SERIES

K3	page 27
K6	page 29
K6 SIGNATURE	page 31

FINISHES

page 33

TWEETERS

page 35

EXCLUSIVELY AVAILABLE THROUGH A DEDICATED TEAM OF UK INDEPENDENT DEALERS AND INTERNATIONAL DISTRIBUTORS

For a full list of UK dealers and worldwide distributors please visit our website: ProAc-Loudspeakers.com

© 2019 ProAc Loudspeakers. Specifications correct at time of going to press. ProAc reserve the right to change the specifications without notice. E.&O.E. No part of this brochure may be copied in any form what so ever without the written permission of ProAc Loudspeakers.



TABLETTE 10 from \$1900



Shown in Cherry wood veneer

The new ProAc Tablette 10 is a tenth generation of the Tablettes launched in 1979. The Tablette 10 is an all new design, using a thin walled heavy damped infinite baffle enclosure which is the same as the BBC LS3/5a. This design allows the Tablette 10 to be positioned against a wall, unlike a ported enclosure (not recommended).

The Tablette 10 has new cutting edge drive units, the bass driver has a Pagina Mica cone which is reed leaves mixed with Mica and coated with an acoustic dope.

The crossover has been specially designed for a sealed enclosure with a network which shapes the response to give a rich bass and an extremely transparent midrange. The tweeter is our well known 1" silk dome used in many of ProAc's other models.

During the design several speakers were used as comparison those being the LS3/5a, ProAc D2, Spender BC1 and Quad Es1 57.

We urge people to listen and compare with other makes and models as we are sure you will find the musical presentation of the Tablette 10 intoxicating.



SPECIFICATION

NOMINAL IMPEDANCE	10Ω
RECOMMENDED AMPLIFIERS	5 - 50W
FREQUENCY RESPONSE	55Hz - 30kHz
SENSITIVITY	86dB linear for 1 Watt at 1 Metre
BASS DRIVER	ProAc 5" with Pagina Mica cone, with acoustic coating
TWEETER	1" (25mm) ProAc silk dome air cooled and inner damping
CROSSOVER	Finest components on dedicated circuit board. Multistrand oxygen free copper cable throughout. Split for optional Bi Wiring or Bi Amplification
HEIGHT	12" (305mm)
WIDTH	7.5" (191mm)
DEPTH	6.25" (159mm)
WEIGHT	12lb (5.5kg) each
MODE	Stand/shelf mounting
GRILLE	Acoustically transparent crimplene

FINISH

Available in the following real wood veneers: Black Ash, Mahogany, Cherry, Walnut, Oak and Silk White. Rosewood and Ebony can be ordered at extra cost.



TABLETTE 10 SIGNATURE from \$2400



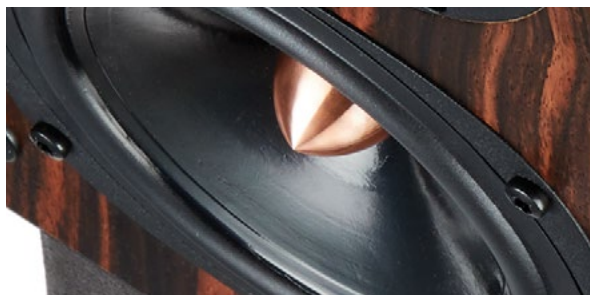
Shown in Ebony wood veneer

Following the successful launch of the ProAc Tablette 10 we have been developing a Tablette 10 Signature version. It has taken a great deal of time to design a new bass driver with Excel magnet system and our own solid copper phase plug. The result is a bass driver with the Tablette 10 cone material and our special copper magnet system.

During the design of the Tablette 10 the LS3/5A, along with other mini monitors, were compared to the Tablette 10 and in our opinion the Tablette 10 had lower colouration. The Tablette 10 Signature shares the attributes of the Tablette 10 but has a larger more projected mid-range giving excellent sound stage with a feeling of size which, is often missing in small loudspeakers.

A great deal of time was spent fine tuning the crossover to get the best from our new bass driver. Many months of measuring and listening were taken by Stewart Tyler, the designer of both Tablette 10 and Tablette 10 Signature. The end result is a speaker similar to the Tablette 10 in sound but, on certain types of music and voice reproduction, advantages of the signature can be quite easily heard.

Tablette 10 Signature can be used with its back against the wall and on good quality stands.



SPECIFICATION

NOMINAL IMPEDANCE	10Ω
RECOMMENDED AMPLIFIERS	5 - 50W
FREQUENCY RESPONSE	55Hz - 30kHz
SENSITIVITY	86dB linear for 1 Watt at 1 Metre
BASS/MIDRANGE DRIVERS	ProAc 5" with Pagina Mica cone, with acoustic coating and copper excel magnet system with solid copper phase plug
TWEETER	1" (25mm) ProAc silk dome air cooled and inner damping
CROSSOVER	Finest components on dedicated circuit board. Multistrand oxygen free copper cable throughout. Split for optional Bi Wiring or Bi Amplification
HEIGHT	12" (305mm)
WIDTH	7.5" (191mm)
DEPTH	6.25" (159mm)
WEIGHT	12lb (5.5kg) each
MODE	Stand mounting recommended. Can be shelf mounted if necessary
GRILLE	Acoustically transparent crimplene

FINISH

Available in the following real wood veneers: Black Ash, Mahogany, Cherry, Walnut, Oak and Silk White. Rosewood and Ebony can be ordered at extra cost.



STUDIO MONITOR 100 \$3400



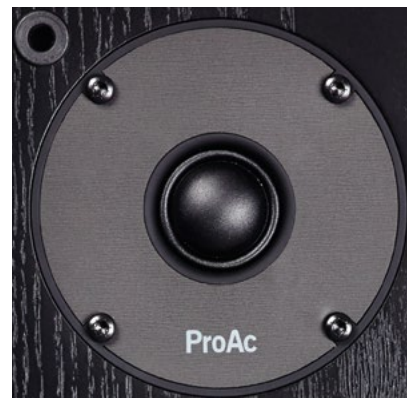
Shown in Black Ash wood veneer

The ProAc studio 100 was produced for over 20 years until 2013. They were made for both domestic and studio use. The studio 100 quickly became a favourite in studios, used as a near field monitor.

For the last two years Stewart Tyler has been working on a new speaker named the ProAc SM100 and all paraMetres have been improved for both studio and domestic use. It now has a new bass driver with a new surround and dust cap along with a brand new one inch domed tweeter and crossover network, however the cabinet remains the same.

The bass driver looks similar but has a new rubber surround for longevity and power handling and now comes in a ProAc basket. The tweeter is a new ProAc design with a one inch silk dome and a front plate to lower distortion, the dome has a new roll surround.

The SM100 also features a new crossover, the overall sound quality is similar to the studio 100 but a slightly smoother sound makes it ideal for long listening sessions.



SPECIFICATION

NOMINAL IMPEDANCE	8Ω
RECOMMENDED AMPLIFIERS	30 - 150W
FREQUENCY RESPONSE	35Hz - 30kHz
SENSITIVITY	88dB linear for 1 Watt at 1 Metre
BASS/MIDRANGE DRIVER	6.5" (165mm) treated cone with new rubber surround and basket
TWEETER	1" (25mm) soft silk dome with special front plate and roll surround
CROSSOVER	Finest components on dedicated circuit board. Multistrand oxygen free copper cable throughout. Split for optional Bi Wiring or Bi Amplification
HEIGHT	16" (406mm)
WIDTH	8" (203mm)
DEPTH	10" (254mm)
WEIGHT	26lb (12kg) each
MODE	Stand mounted
GRILLE	Acoustically transparent crimplene

FINISH

Available in the following real wood veneers: Black Ash and Cherry.



CENTRE VOICE from \$1500

The new ProAc Centre Voice speaker has been designed to give a natural speech and sound quality to give the realism of a Centre Channel in a home cinema system.

The Centre Voice uses two brand new bass driver similar to those used in the Tablette 10. The Centre Voice also has a wide bandwidth and good power handling for home cinema use and matches other ProAc speakers used in our home cinema system.

The new Centre Voice is just as good on music as it is on voice and music DVD's can be reproduced with stunning accuracy, with good bass weight for a small enclosure. The new crossover with different slopes has been adopted by the crossover network and these new bass drivers crossover seamlessly with the ProAc 1" silk dome tweeter, which is used in many other ProAc products making it a perfect match when used in a system with other ProAc models.

We urge you to compare the Centre Voice with other centre channel speakers, We are sure you will find the ProAc crystal clear on voice and rich, sweet and detailed on music.



Shown in Cherry wood veneer

SPECIFICATION

NOMINAL IMPEDANCE	4Ω	HEIGHT	7.5" (191mm)
RECOMMENDED AMPLIFIERS	10 - 100W	WIDTH	17" (432mm)
FREQUENCY RESPONSE	50Hz - 30kHz	DEPTH	8" (204mm)
SENSITIVITY	88dB linear for 1 Watt at 1 Metre	WEIGHT	22lb (10kg)
BASS DRIVER	ProAc 5" (127mm) with Pagina Mica cone, with acoustic coat	MODE	Stand/shelf mounting
TWEETER	1" (25mm) ProAc silk dome air cooled and inner damping	GRILLE	Acoustically transparent crimplene
CROSSOVER	Finest components on dedicated circuit board. Multistrand oxygen free copper cable throughout. Split for optional Bi Wiring or Bi Amplification	FINISH	Available in the following real wood veneers: Black Ash, Mahogany, Cherry, Walnut, Oak and Silk White. Rosewood and Ebony can be ordered at extra cost.

RESPONSE DB3 from \$2700



Shown in Silk White

A new high end stand mounting loudspeaker at an affordable price. Better efficiency and a rich sound belies their size.

Small high quality loudspeakers have become very popular, being less of an eyesore whilst reproducing some quite respectable sound quality. The new Response DB3 has a similar cabinet size to the Response DB1. There are structural and visual differences to the cabinet of the Response DB3, it also employs a new bass driver and crossover which have been chosen for their exceptional performance with a more affordable price.

The new Response DB3 has a wonderfully rich and extended bass quality, loaded with a single reflex port in the rear of the cabinet. The tweeter is our ProAc one inch soft dome used in many other ProAc designs. This one inch silk dome has a superbly flat response with electrostatic type detail and sweetness to its qualities.

A newly designed bass driver with a special surround and dust cap, allows extra information from the voice coil giving a smoother transition of frequencies to our one inch dome tweeter. The bass driver is a long throw design with a raised spider and linear motor system. The new bass driver is responsible for the remarkable bass extension.

The Crossover has been designed for the new bass driver to seamlessly mate with our one inch soft dome tweeter. The sound quality is what you would expect from ProAc, very natural with an excellent detailed, sweet high frequency and exceptional sound stage.



SPECIFICATION

NOMINAL IMPEDANCE	8Ω
RECOMMENDED AMPLIFIERS	20 - 100W
FREQUENCY RESPONSE	38Hz - 30kHz
SENSITIVITY	88.5dB linear for 1 Watt at 1 Metre
BASS/MIDRANGE DRIVERS	ProAc 5" long throw unit with Pagina Mica cone and transparent dust cap
TWEETER	ProAc 1" silk dome with special coolant
CROSSOVER	Finest components on dedicated circuit board. Multistrand oxygen free copper cable throughout. Split for optional Bi Wiring or Bi Amplification
HEIGHT	12.5" (320mm)
WIDTH	7.28" (182mm)
DEPTH	10.4" (280mm)
WEIGHT	19.6lb (8.8kg) each
MODE	Stand mounted
GRILLE	Acoustically transparent crimplene

FINISH

Available in the following real wood veneers: Black Ash, Mahogany, Cherry, Walnut, Oak and Silk White. Rosewood and Ebony can be ordered at extra cost.



Shown in Silk White

RESPONSE DB1 from \$3400

Small mini monitor type loudspeakers have become very popular for those wishing for a high quality sound with a minimal visual effect.

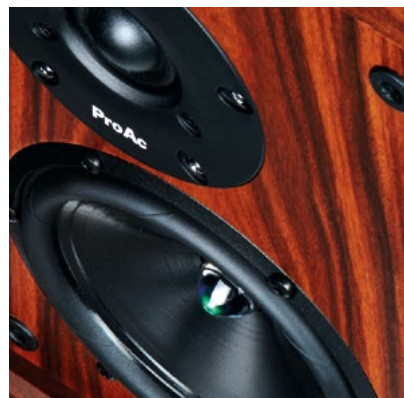
Although the mini monitor type speaker can be quite accurate and indeed sound better than many bigger loudspeakers, which obviously have not been made with the same care, the Achilles' heel of a small loudspeaker is the bass extension and sound stage size. A big loudspeaker can produce low octaves and give you a large sound stage ideal for large orchestral and high level rock; however they can be an eyesore and dominate the room visually. ProAc have set out to try and achieve in a small speaker a sound normally associated with a larger speaker particularly the bass response.

The DB1 cabinet is slightly larger than the previous model; the cabinet is made from different thicknesses of high density MDF and further damped by bituminous damping to control cabinet resonance. A newly designed long throw bass driver with raised spider and linear motor system was used and ported at the rear. The cone is made from Pagina Mica which is then elastic coated and fitted with our ProAc acrylic pole damping phase plug. The new crossover was designed to give a flatter response at high levels and the tweeter is a ProAc 1 inch silk dome similar to that used in the ProAc Response D2.

The midrange and high frequencies of the DB1 are superb and in the ProAc tradition low in colouration and high in detail. The new bass driver gives a wonderful bass quality, punchy and extended and some way towards a larger enclosure. The DB1 also gives a larger sound stage normally associated with bigger enclosures.



Shown in Rosewood veneer



SPECIFICATION

NOMINAL IMPEDANCE	8Ω
RECOMMENDED AMPLIFIERS	20 - 100W
FREQUENCY RESPONSE	35Hz - 30kHz
SENSITIVITY	87.5dB linear for 1 Watt at 1 Metre
BASS/MIDRANGE DRIVERS	ProAc 5" long throw unit with Pagina Mica cone and acrylic phase plug
TWEETER	ProAc 1" silk dome with special coolant
CROSSOVER	Finest components on dedicated circuit board. Multistrand oxygen free copper cable throughout. Split for optional Bi Wiring or Bi Amplification
HEIGHT	12.5" (320mm)
WIDTH	7.28" (182mm)
DEPTH	10.4" (280mm)
WEIGHT	19.6lb (8.8kg) each
MODE	Stand mounted
GRILLE	Acoustically transparent crimplene

FINISH

Available in the following real wood veneers: Black Ash, Mahogany, Cherry, Walnut, Oak and Silk White. Rosewood and Ebony can be ordered at extra cost.



RESPONSE D2/D/R from \$3500



ProAc loudspeakers have a reputation for exceptional sound and build quality. Our enclosures may look conventional but this hides the advanced technology required to build a rigid and well-damped cabinet. All our loudspeakers are made in our factory at Brackley, England. The D2 is finished in gorgeous real wood veneer and now has a choice of either dome or ribbon tweeter.

The Response D2 has already been in production for 15 years with a dome tweeter and is now considered to be a much respected model. We now offer this model with the option of a ribbon tweeter, as we do with some of our other models.

The ribbon tweeter is the same tweeter used in our floor standing models and offers a refreshing alternative to those seeking a high quality stand mounted design. We are renowned for producing compact high-end speakers evidenced by both the Tablette and Response 1SC loudspeakers which have become iconic over the years.

The Response D2 is a speaker in this fine tradition, designed for the finest quality music and giving true monitor performance. The sound quality from the Response D2 and the Response D2R is one of extreme transparency; a pure and potent bass response with a detailed high frequency.

Whether you choose the dome or ribbon version of the Response D2 we are sure you will be astounded with the extreme transparency, pure and potent bass and pinpoint imagery that this model delivers.



DOMES OR RIBBON
WHICH TWEETER SHOULD YOU CHOOSE?
Find out more about the differences on page 35

SPECIFICATION

NOMINAL IMPEDANCE	8Ω
RECOMMENDED AMPLIFIERS	20 - 150W
FREQUENCY RESPONSE	30Hz - 30kHz
SENSITIVITY	88.5dB linear for 1 Watt at 1 Metre
BASS/MIDRANGE DRIVERS	6.5" (165mm) ProAc unit with Excel Magnet system, glass fibre weave cone and copper phase plug
TWEETER - D2D	ProAc 1" (25mm) silk dome air cooled and inner damping. Mirror image offset
TWEETER - D2R	The ProAc ribbon tweeter has a ribbon lighter than a human hair with rear chamber damping and alnico magnet
CROSSOVER	Finest components on dedicated circuit board. Multistrand oxygen free copper cable throughout. Split for optional Bi Wiring or Bi Amplification
HEIGHT	17" (430mm)
WIDTH	8" (203mm)
DEPTH	10.25" (260mm) including grill thickness of 12mm
WEIGHT	24lb (11kg) each
MODE	Stand mounted on rigid high mass
GRILLE	Acoustically transparent crimplene

FINISH

Available in the following real wood veneers: Black Ash, Mahogany, Cherry, Walnut, Oak and Silk White. Rosewood and Ebony can be ordered at extra cost.



Shown in Walnut wood veneer

RESPONSE DT8 from \$3700



Shown in Natural Oak veneer

ProAc invests a great deal of time researching the choice of diaphragm material for their drive units because this is the most important component, transferring cone movement into sound. Some materials excel at certain frequencies and therefore it would prove logical to use more than one type of drive unit material to cover all frequencies. Additionally, all production parts from the chassis through to the magnet system, spider and voice coil are painstakingly selected.

The latest ProAc floor standing design, the new Response DT8, incorporates these design parameters for the first time in a ProAc two-way design. Utilising 2 x 6.5 inch drivers, the pulp mica cone unit delivers exceptional bass performance in a ported cabinet with the bass loaded via side vents and the polypropylene unit gives a smooth, detailed and uncoloured midrange. Both drivers work in tandem resulting in a well extended low frequency response and ProAc's signature natural sounding midrange quality and pinpoint imagery. These frequency ranges are then cleverly overlapped by a new, Stewart Tyler designed, crossover which seamlessly integrates ProAc's proven 1 inch soft dome tweeter, offset on the front baffle, and placed between the 2 drivers.

Some other manufacturers frequently use the same drive unit cone material in each of the models in their range. ProAc has taken a different approach and has previously used carbon fibre, kevlar, pulp and polypropylene. However this is the first time we have used two different types of unit in a two-way design.

The new Response DT8 now takes its place in the ProAc range as our entry level floor standing design. We believe that this innovative new loudspeaker will create new interest in the mixing and matching of drive unit cone materials to effectively cover all types of music. enclosure. The DB1 also gives a larger sound stage normally associated with bigger enclosures.

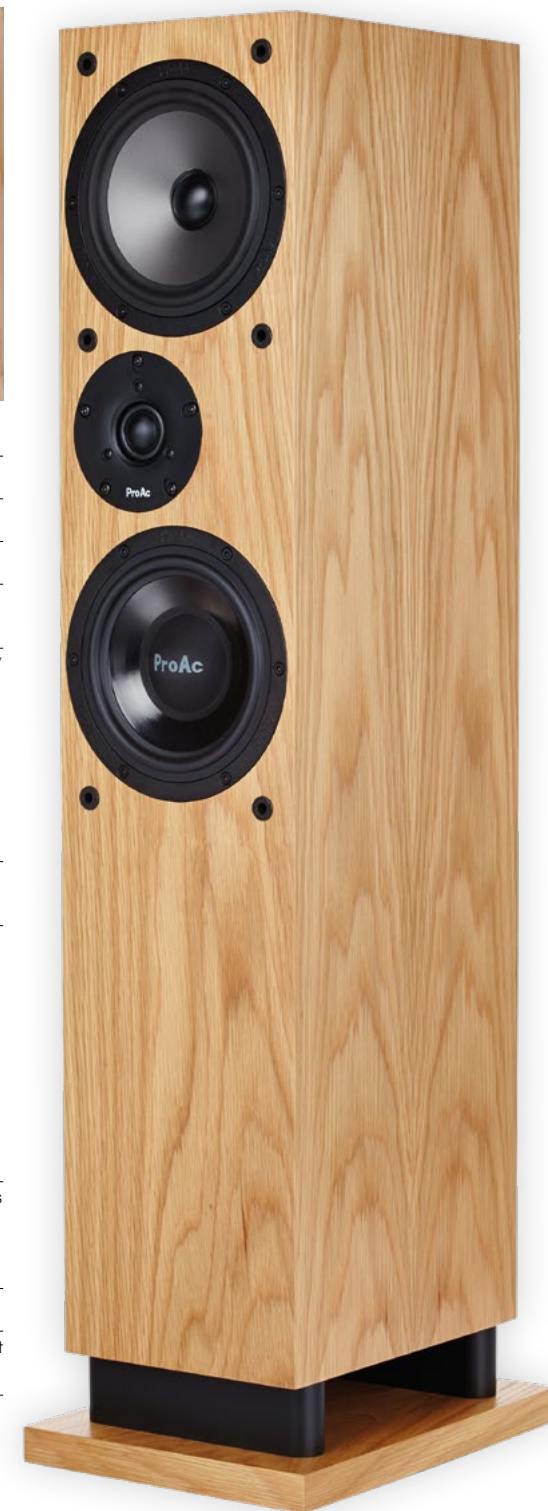


SPECIFICATION

NOMINAL IMPEDANCE	4Ω
RECOMMENDED AMPLIFIERS	20 - 180W
FREQUENCY RESPONSE	28Hz - 30kHz
SENSITIVITY	90dB linear for 1 Watt at 1 Metre
BASS/MIDRANGE DRIVERS	2 x 6.5" (165mm) bass/mid units. One driver with Pagina Mica cone and open weave dust cap and one driver with polypropylene cone with soft polypropylene dust cap. Both units working in tandem
TWEETER	ProAc 1" (25mm) silk dome tweeter
CROSSOVER	Specially designed crossover to accommodate two different types of bass/mid cones. Glass fibre board with finest components using multistrand copper wire designed for use with both Bi-amping and Bi-wiring
HEIGHT	38.5" (978mm) on spikes
WIDTH	7.6" (193mm)
DEPTH	10.4" (265mm)
WEIGHT	55lb (26kg) each
MODE	Floor Standing
GRILLE	Acoustically transparent criplene

FINISH

Available in the following real wood veneers: Black Ash, Mahogany, Cherry, Walnut, Oak and Silk White. Rosewood and Ebony can be ordered at extra cost.



RESPONSE D20/D/R from \$5200



Shown in Rosewood veneer

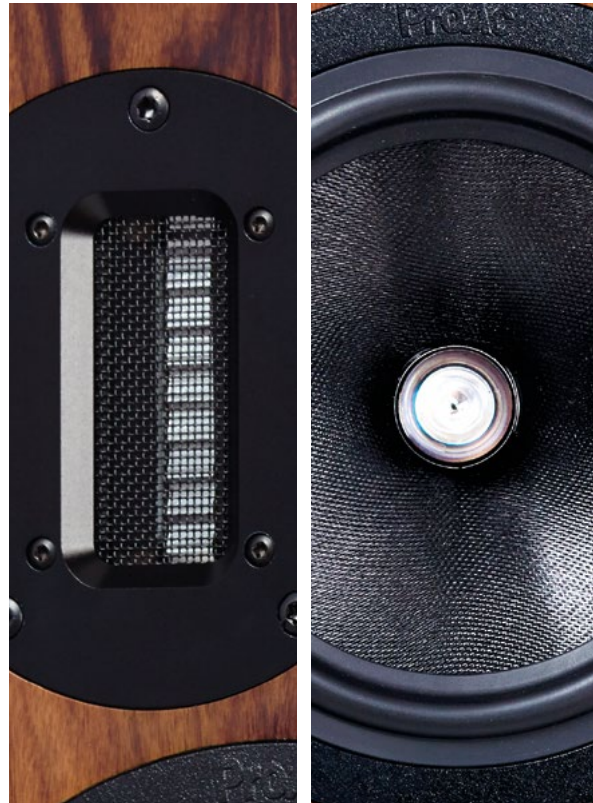
The Response D18 proved to be one of ProAc's most successful loudspeakers, receiving critical worldwide acclaim but was only available with a dome tweeter. To satisfy demand for people wanting a ribbon tweeter ProAc has redesigned the D18 using an upgraded cabinet with new bass loading, new crossover network and the ProAc ribbon tweeter used in other ProAc models.

This new exciting model is called the D20R and, with the upgrades, the sound quality has improved in all areas.

Improvements comprise of a new cabinet with bass loading used in D30 and D48 models. A new crossover network and a ProAc ribbon tweeter as used in D30, D48 and K6. The result is a wonderful open and expansive midrange with a substantial bass and the ProAc ribbon tweeter giving sweet and detailed high frequencies.

A large sound stage is also a bonus.

The D20 can be supplied with ProAc's proven dome tweeter if preferred.



SPECIFICATION

NOMINAL IMPEDANCE	8Ω
RECOMMENDED AMPLIFIERS	20 - 180W
FREQUENCY RESPONSE	28Hz - 33kHz
SENSITIVITY	88.5dB linear for 1 Watt at 1 Metre
BASS/MIDRANGE DRIVERS	New 6.5" (165mm) ProAc unit features glass fibre weave cone, Excel Magnet system and unique acrylic damping phase plug
TWEETER - D20D	Fitted with 25mm silk dome tweeter with air cooling
TWEETER - D20R	ProAc ribbon 60mm x 10mm 'as light as a human hair', with rear chamber damping
CROSSOVER	Finest components on dedicated circuit board. Multistrand oxygen free copper cable throughout. Split for optional Bi Wiring or Bi Amplification
HEIGHT	38.5" (978mm) on spikes
WIDTH	7.6" (193mm)
DEPTH	11" (282mm)
WEIGHT	55lb (26kg) each
MODE	Floor Standing
GRILLE	Acoustically transparent crimplene

FINISH

Available in the following real wood veneers: Black Ash, Mahogany, Cherry, Walnut, Oak and Silk White. Rosewood and Ebony can be ordered at extra cost.



Shown in Silk White

RESPONSE D30/DS/RS from \$8000

The new Response D30 is the latest model to take advantage of the acoustic excellence of Pagina Mica which is reed leaves mixed with mica and coated with acoustic dope, thereby achieving levels of sound quality that were only dreamed of a few years ago.

This new cone material is complemented by a ProAc phase plug. Bass loading is achieved by side vented directional loading similar to that used in the D48, producing an extremely accurate and powerful bass response with good extension and low colouration.

The D30 is available in both ribbon and dome tweeter configurations and features the same high quality HF units found in the D48/D48R. The crossover network employs dedicated components of the highest quality and multi strand oxygen free copper wiring. The classic ProAc split crossover design offers bi-wiring and bi-amping options.

The D30 therefore offers a similar bass loading, cone material, tweeter and crossover network to that of its larger sibling, making it an ideal choice for those who require a smaller floorstander, but still demand sonic excellence.

Once set up using our own spikes, which are designed to penetrate even thick carpet and when partnered with quality electronics, the exceptional performance of the D30 can be fully realised. Offering clean powerful bass, an uncoloured, open midrange and a sweet, detailed high frequency response from either the ribbon or dome tweeter, the Stewart Tyler designed D30 offers a wonderfully natural and musical performance with pinpoint imagery that will appeal to audiophiles and music lovers all over the world.



Shown in Rosewood veneer

Shown in Cherry and Rosewood veneer

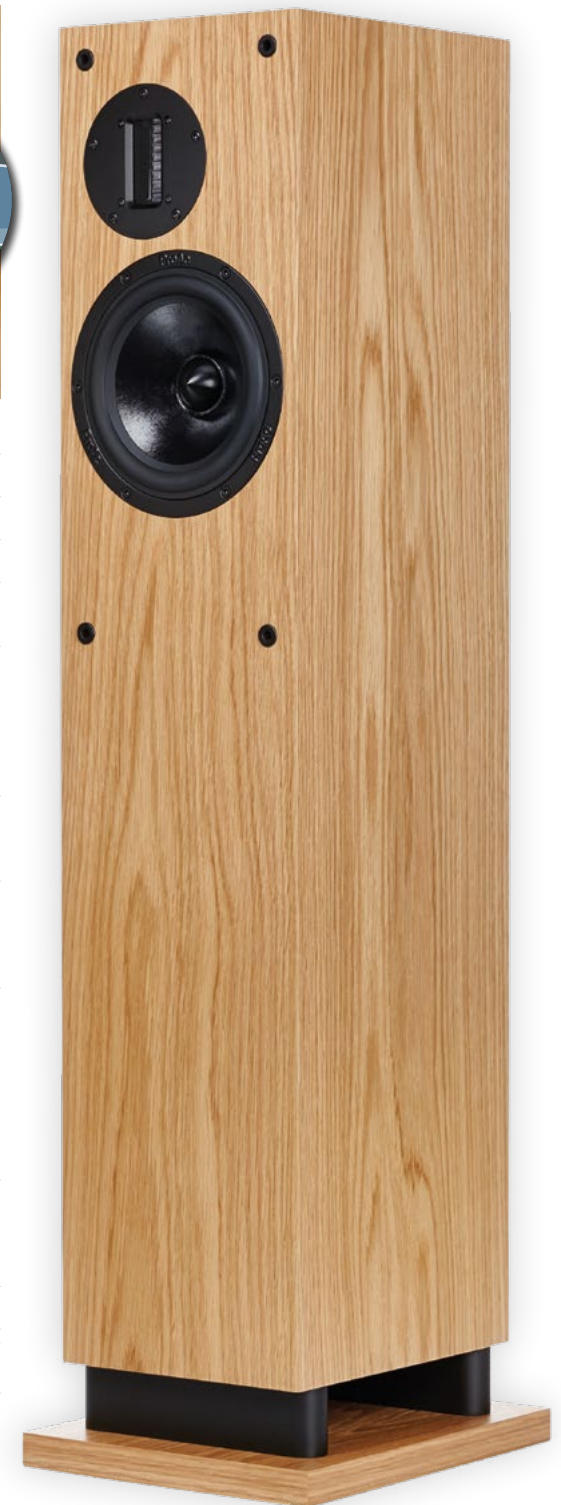


SPECIFICATION

NOMINAL IMPEDANCE	8Ω
RECOMMENDED AMPLIFIERS	10 - 200W
FREQUENCY RESPONSE	20Hz - 30kHz
SENSITIVITY	89dB linear for 1 Watt at 1 Metre
BASS/MIDRANGE DRIVERS	6 1/2" (165mm) ProAc unit fitted with an acoustically damped Pagina Mica cone with phase plug and coated with an acoustic dope
TWEETER - D30DS	Fitted with 25mm silk dome tweeter with air cooling
TWEETER - D20R	ProAc ribbon 60mm x 10mm 'as light as a human hair', with rear chamber damping
CROSSOVER	HQC network using the finest dedicated components wired with ProAc multistrand oxygen free copper cable throughout. Split for Bi Wiring or Bi Amplification
HEIGHT	41" (1041mm)
WIDTH	10" (266mm)
DEPTH	12" (311mm)
WEIGHT	59lb (27kg) each
MODE	Floor Standing
GRILLE	Acoustically transparent criplene

FINISH

Available in the following real wood veneers: Black Ash, Mahogany, Cherry, Walnut, Oak and Silk White. Rosewood and Ebony can be ordered at extra cost.



Shown in Natural Oak veneer

RESPONSE D48/D/R from \$11000



Shown in Rosewood veneer

The D48 spent a year in research and development before we were happy that it was good enough to go into production.

Areas of improvement have been mid-range detail and a cleaner, faster and more extended bass response. A new studio monitor quality bass driver was designed for the D48 featuring a special impregnated cone with mid frequencies tuned by a cap of greater size than standard. This gives the new unit greater mid-range detail along with excellent bass control giving a tighter and more extended response. The two new bass drivers are each loaded through our special floor loading with side vents, this makes the loudspeaker easier to site and reacts less to surroundings. The two bass units are then seamlessly mated to our ribbon or dome tweeter depending on your preference.

With such a large slim floor standing design the sound stage is superb being very large and with pinpoint imagery. Another achievement for the D48 is its ability to portray large orchestral works as well as heavy rock music.

The D48 has a high quality filter network designed by Stewart Tyler comprised of the finest components and ProAc cable on a special board. The filter is also split for bi-amping and bi-wiring. This is one of the best designs from the ProAc Response D range and should please all audiophiles regardless of their taste in music.



SPECIFICATION

NOMINAL IMPEDANCE	4Ω
RECOMMENDED AMPLIFIERS	10 - 250W
FREQUENCY RESPONSE	20Hz - 30kHz
SENSITIVITY	90dB linear for 1 Watt at 1 Metre
BASS/MIDRANGE DRIVERS	2 x 6.5" (165mm) ProAc studio monitor design units with special coating and dust cap tuning
TWEETER - D48D	1" (25mm) ProAc soft dome with special surround and inner damping
TWEETER - D48R	ProAc ribbon 60mm x 10mm 'as light as a human hair', with rear chamber damping
CROSSOVER	HQC network using the finest dedicated components wired with ProAc multistrand oxygen free copper cable throughout. Split for Bi Wiring or Bi Amplification
HEIGHT	47.25" (1200mm)
WIDTH	8.3" (212mm)
DEPTH	13.5" (340mm)
WEIGHT	86lb (39kg) each
MODE	Floor Standing
GRILLE	Acoustically transparent complene

FINISH

Available in the following real wood veneers: Black Ash, Mahogany, Cherry, Walnut, Oak and Silk White. Rosewood and Ebony can be ordered at extra cost.



K SERIES **K3** from \$15500



Shown in Cherry veneer

The K series range of speakers are called so because of the use of Kevlar in the construction of the drive units. So far we have only used Kevlar and Carbon Fibre for bass and lower midrange reproduction in large enclosures. These cones have a light, stiff quality, the Kevlar has more warmth making excellent bass transients and extension.

Cone material is something that ProAc have been developing over the last fifteen years with an emphasis on Carbon fibre and Kevlar. A new Kevlar cone was developed which would work into the midrange far better than previous Carbon fibre or Kevlar cones, this also has the added benefit of a phase plug giving better detail and dispersion

The new Kevlar drive unit was developed for the K3 and has excellent weight to the bass as well as good extension with a detailed and uncoloured midrange. This new Kevlar unit would go into a new speaker called the K3, two of these units are used with our ribbon tweeter placed centrally in our K constructed cabinet. A high quality crossover was specially designed for the K3 to seamlessly mate with the ribbon tweeter and this new crossover uses high quality components split for bi-amping and bi-wiring and connected directly to the terminals.

As far as sound quality goes, the K3 has a wonderfully electrostatic type of midrange, very clear and detailed with a dynamic bass response.

We are sure the K3 will give customers who desire music from full orchestral to loud rock the desired results with ease.



SPECIFICATION

NOMINAL IMPEDANCE	4Ω
RECOMMENDED AMPLIFIERS	10 - 250W
FREQUENCY RESPONSE	25Hz - 30kHz
SENSITIVITY	89dB linear for 1 Watt at 1 Metre
BASS/MIDRANGE DRIVERS	2x 6.5 special bass/midrange drive unit with Kevlar cone and phase plug
TWEETER	ProAc ribbon with diaphragm as light as a human hair, alnico magnet and rear chamber damping
CROSSOVER	Finest components on dedicated dual layer circuit board. ProAc multistrand oxygen free copper cable throughout. Split for optional Bi Wiring or Bi Amplification
HEIGHT	42.5" (1073mm)
WIDTH	8.5" (215mm)
DEPTH	13.5" (340mm)
WEIGHT	93.5lb (42kg) each
MODE	Floor Standing
GRILLE	Acoustically transparent crimplene

FINISH

Available in the following real wood veneers: Black Ash, Mahogany, Cherry, Walnut, Oak and Silk White. Rosewood and Ebony can be ordered at extra cost.



K SERIES **K6** from \$22000

Kevlar benefits from having similar properties to carbon fibre, being light and at the same time rigid. The ProAc 6 1/2" drivers utilised in the K6 feature Kevlar cones. The cone is painstakingly produced from a mould by hand, a labour intensive process taking many hours to complete.

Although Kevlar has proven to be an excellent cone material sonically, the Kevlar ProAc bass drivers require a different porting mechanism in order to realise their full potential. The bass is loaded by an almost invisible vent to produce a wonderfully weighty but exceptionally fast bass response. These drivers are seamlessly crossed over to a 2" dome midrange, the horn of which is manufactured from billet aluminium and for the high frequencies, ProAc's proven ribbon tweeter has been chosen.

The cabinet on the K6 is a traditional mixture from ProAc of HDF materials of different thicknesses heavily damped with bitumen. Indeed the carcass including bitumen is 35mm thick. The combination of research into carbon fibre and its ingredients have produced a stunningly accurate and detailed loudspeaker, having an electrostatic or panel quality without the drawbacks. Sound is reproduced effortlessly with incredible detail and pinpoint imagery, which often can be muddled by conventional drive units.

The K6 is designed for audiophiles and music lovers who are looking for a true high end loudspeaker offering smooth reproduction and an impressively flat response throughout the frequency range. The legendary ProAc qualities of large soundstaging and pin-sharp imaging capabilities complete a highly musical and engaging transducer.



Shown in Rosewood veneer



SPECIFICATION

NOMINAL IMPEDANCE	4Ω
RECOMMENDED AMPLIFIERS	10 - 250W
FREQUENCY RESPONSE	25Hz - 30kHz
SENSITIVITY	90dB linear for 1 Watt at 1 Metre
BASS DRIVER	2 x 6.5" (165mm) Studio Professional drive units with polymer impregnated kevlar cones
MIDRANGE DRIVER	2" (50mm) Soft dome with a CNC machined 6061 aluminium alloy air coupling
TWEETER	ProAc ribbon with diaphragm 'as light as a human hair', alnico magnet and rear chamber damping
CROSSOVER	Finest components on dedicated dual layer circuit board. ProAc multistrand oxygen free copper cable throughout. Split for optional Bi Wiring or Bi Amplification
HEIGHT	46" (1185mm) on spikes
WIDTH	8.5" (215mm)
DEPTH	13.5" (340mm)
WEIGHT	97lb (44kg) each
MODE	Floor Standing
GRILLE	Acoustically transparent crimplene

FINISH

Available in the following real wood veneers: Black Ash, Mahogany, Cherry, Walnut, Oak and Silk White. Rosewood and Ebony can be ordered at extra cost.



K SERIES **K6 SIGNATURE** from \$26000



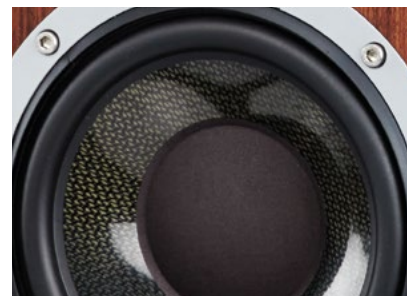
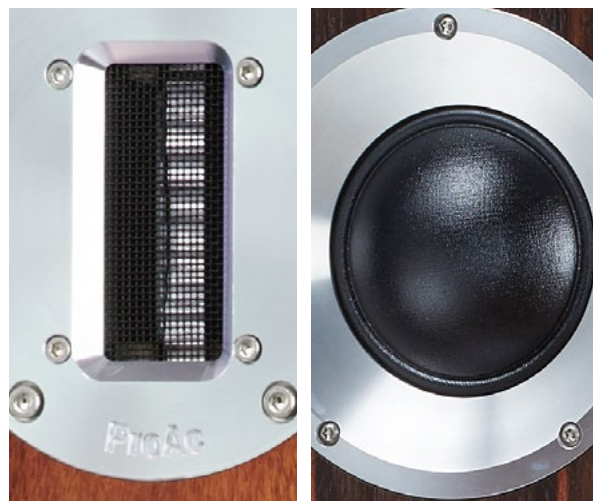
Shown in Ebony wood veneer

The K6 Signature uses a similar cabinet to the K6 being an excellent size with its tall slim design. The K6 Signature compared to the K6 is different in many ways, firstly the drive unit layout has been designed to put the ribbon tweeter at ear level when in the seated position. It also has a new ProAc three inch midrange as opposed to the two inch one used in the K6.

The three inch midrange gives better detail and crosses over to obtain a seamless transition from low to mid frequencies. The new three inch dome is produced by ProAc and has a billet aluminium wave guide with a special vented chamber to the rear. The bass drivers are now sited at the top and bottom of the layout, this helps to achieve a cleaner more extended bass response giving the K6 Signature an almost electrostatic sound.

The cabinet on the K6 signature is a traditional mixture from ProAc of HDF materials of different thickness, heavily damped with bitumen. Indeed, the carcass including the bitumen is 35mm thick. The combination of research into carbon fibre/Kevlar and its ingredients have produced a stunningly accurate and detailed loudspeaker. Sound is reproduced effortlessly with incredible detail and pinpoint imagery, which often can be muddled by other conventional units.

The K6 Signature is designed to fulfil all audiophile's desires when it comes to a true high end loudspeaker offering an impressively accurate sound reproduction that has an amazingly flat response throughout the frequency range. The K6 signature is an impressive addition to any audiophiles home and for the first time is exclusively also available in two new beautiful wood finishes.



SPECIFICATION

NOMINAL IMPEDANCE	4Ω
RECOMMENDED AMPLIFIERS	10 - 250W
FREQUENCY RESPONSE	25Hz - 30kHz
SENSITIVITY	90dB linear for 1 Watt at 1 Metre
BASS DRIVER	2x 6.5" (165mm) Studio professional drive Units with polymer impregnated Kevlar cones
MIDRANGE DRIVER	3" (75mm) soft dome ProAc unit with special horn and rear chamber.
TWEETER	The ProAc ribbon tweeter has a ribbon lighter than a human hair with rear chamber damping and alnico magnet.
CROSSOVER	Finest components on dedicated dual layer circuit board. ProAc multistrand oxygen free copper cable throughout. Split for optional Bi Wiring or Bi Amplification
HEIGHT	46" (1185mm) on spikes
WIDTH	8.5" (215mm)
DEPTH	13.5" (340mm)
WEIGHT	97lb (44kg) each
MODE	Stand Mounting
GRILLE	Acoustically transparent crimplene

FINISH

Available in the following real wood veneers: Black Ash, Mahogany, Cherry, Walnut, Oak and Silk White. Rosewood and Ebony and NEW Tamo Ash or Dark Eucalyptus can be ordered at extra cost.



FINISHES REAL WOOD VENEERS

Available in the following real wood veneers depending on model. Check specification for availability.



BLACK ASH (standard)



MAHOGANY (standard)



CHERRY (standard)



OAK (standard)



SILK WHITE (standard)



WALNUT (standard)



ROSWEWOOD (extra cost option)



EBONY (extra cost option)



TAMO ASH (extra cost option)



DARK EUCALYPTUS (extra cost option)

Wood is a natural resource and the veneer samples shown should be viewed as a guide only. Colour and grain patterns are subject to variation.



We've cracked it!

perfectly natural sound in a stunning new shell

No. We're not making miniature loudspeakers. We think our loudspeakers are amongst the best in the world already, at the size they are.

But this year we wanted to give you something new. Something as stunning as the perfectly natural soundstages created by our range of loudspeakers and we think we've cracked it!

Presenting our stunning new real WALNUT VENEER cabinets. Available NOW throughout our range of magnificent loudspeakers. Ask for more details.





In 1973 Stewart Tyler launched a company under the brand name 'Celef Audio' which became Celef Audio International Ltd in 1975. In 1979 the brand name ProAc was introduced and the Celef brand name was gradually phased out.

Stewart designs all models under the company name Celef Audio International Ltd which are nowadays called the ProAc range of loudspeakers.

Over the years Stewart has investigated all types of tweeters, these could be ribbon, dome, electrostatics and less well known types. Finding a tweeter with the least drawbacks was his ambition.

DOMES OR RIBBON TWEETER Which is best for me?



To reproduce high frequencies in a natural uncoloured way the tweeter diaphragm has to be extremely light, allowing it to start and stop very quickly. Any addition, over hang or distortion would be noticed immediately, so lack of distortion was of the utmost importance.

Dome tweeters are exceptionally good, they are used in a vast majority of loudspeakers adding harmonics in a faithful way with excellent dispersion.

The ribbon diaphragm is probably the lightest and reproduces very high frequencies accurately. Unfortunately the ribbon tweeter does not have the dispersion of a dome tweeter, therefore when listening to loudspeakers with a ribbon tweeter there is generally more of a hotspot to gain the best performance.

In the 1970's Celef Audio made a loudspeaker called a RT1. This used a ribbon tweeter from a company called Decca, and the ribbon was loaded by a large horn to add efficiency. The problem with those tweeters was consistency and power handling. However, these problems have been more or less eradicated and the ribbon tweeter of today is efficient and takes programme power without a problem. But as already mentioned the dispersion with ribbon tweeters is not as good as a dome

tweeter and the dome tweeter works better at lower frequencies than our ribbon tweeter.

In a blind listening test we doubt that the majority of people could tell you whether they were listening to a dome or ribbon tweeter. However, there are some people who have both sensitive and selective hearing that may be able to tell which is which, particularly on some types of music.

At ProAc we offer a choice of Dome or Ribbon tweeter in some of our models, currently the Response D20, D30 and D48 and people often ask us which tweeter sounds the best but It is almost impossible to describe the difference. The only answer, in our opinion, is the personal listening of both types together and finding your own preference for one or the other.

We think both our ribbon and dome tweeters offer excellent high frequency information with low distortion. Certain types of music may reveal the differences. This may be the difference that some customers would desire and would individually suit that listener. This, however, does not mean that another person could hear those same differences.

So, the choice between ribbon and dome is an entirely personal one and is a choice that can only be made by listening to both.

Both give exceptional high frequency sound and whichever tweeter you decide upon after a demonstration you can rest assured that you will be getting the very best sound reproduction available to suit you.



CELEBRATING
40
YEARS
1979 - 2019



For your nearest dealer call
972 234 0182

OR VISIT

soundorg.com/proac/



@ProAcSpeakers

ProAc Loudspeakers
Highpoint House, Riding Road, Brackley,
Northamptonshire, NN13 7BH, England.