

MAY

Frank

Molly

Ben

Anna



23
Monday

8:30 Give Blood
Working late

TOOTHBRUSHES

Buy seeds
DENTIST 4:30

Take Sims to Jamal

HUGE MATHS TEST!!

Birthday Presents for Grandad



24
Tuesday

GOVS meeting 8pm Tennis

Remember Favourite Wilson

Becky after school

mum JAFFACAKES cuttlefish

25
Wednesday

Phoe Stan Badminton 7.00

Finish book

Annual Review 3pm

BANDPRACTICE

Scout Subs

DRAMA CLUB



26
Thursday

FINAL HOLIDAY DEPOSIT
Sunk - Dry cleaners

Book Club
Chloe's 8pm

JABS

Detention

Violin lesson 9.15am



27
Friday

GUTTERS!!
Dinner with Boss FL & GLEAD 7.30

Leaflets (Key)

English Essay
no chance!

Nick Ben's Walkman

sleepover at Sarah's

BIN BAGS!!!
Dishwasher Salt



28
Saturday

UNITED 2.30
Make Cake

7.30 Jog with Debbie
Aromatherapy The Lab 3.00

Call Mags School MAC

Odeon 6.45

Pocket money (dont forget mum!!)

Ha Ha Ben's got a girlfriend!

Wash P.E Kits



29
Sunday

DAD'S 75th Royal Oak 12.15

Swimming



POND

Cake!

THIS YEAR 2020

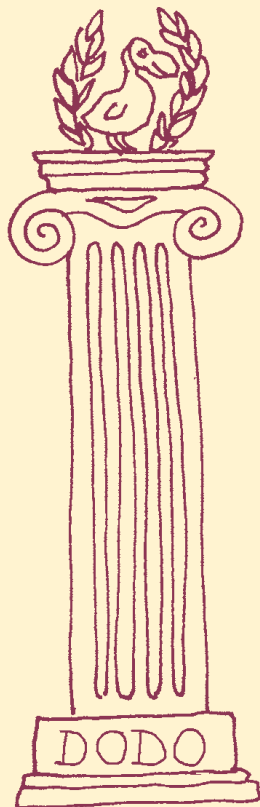
JANUARY		FEBRUARY		MARCH		APRIL		MAY		JUNE	
M	6 13 20 27	M	3 10 17 24	M	2 9 16 23 30	M	6 13 20 27	M	4 11 18 25	M	1 8 15 22 29
T	7 14 21 28	T	4 11 18 25	T	3 10 17 24 31	T	7 14 21 28	T	5 12 19 26	T	2 9 16 23 30
W	1 8 15 22 29	W	5 12 19 26	W	4 11 18 25	W	1 8 15 22 29	W	6 13 20 27	W	3 10 17 24
T	2 9 16 23 30	T	6 13 20 27	T	5 12 19 26	T	2 9 16 23 30	T	7 14 21 28	T	4 11 18 25
F	3 10 17 24 31	F	7 14 21 28	F	6 13 20 27	F	3 10 17 24	F	1 8 15 22 29	F	5 12 19 26
S	4 11 18 25	S	18 15 22 29	S	7 14 21 28	S	4 11 18 25	S	2 9 16 23 30	S	6 13 20 27
S	5 12 19 26	S	2 9 16 23	S	18 15 22 29	S	5 12 19 26	S	3 10 17 24 31	S	7 14 21 28
JULY		AUGUST		SEPTEMBER		OCTOBER		NOVEMBER		DECEMBER	
M	6 13 20 27	M	3 10 17 24 31	M	7 14 21 28	M	5 12 19 26	M	2 9 16 23 30	M	7 14 21 28
T	7 14 21 28	T	4 11 18 25	T	1 8 15 22 29	T	6 13 20 27	T	3 10 17 24	T	1 8 15 22 29
W	1 8 15 22 29	W	5 12 19 26	W	2 9 16 23 30	W	7 14 21 28	W	4 11 18 25	W	2 9 16 23 30
T	2 9 16 23 30	T	6 13 20 27	T	3 10 17 24	T	1 8 15 22 29	T	5 12 19 26	T	3 10 17 24 31
F	3 10 17 24 31	F	7 14 21 28	F	4 11 18 25	F	2 9 16 23 30	F	6 13 20 27	F	4 11 18 25
S	4 11 18 25	S	18 15 22 29	S	5 12 19 26	S	3 10 17 24 31	S	7 14 21 28	S	5 12 19 26
S	5 12 19 26	S	2 9 16 23 30	S	6 13 20 27	S	4 11 18 25	S	1 8 15 22 29	S	6 13 20 27

Key holidays & festivals for a selection of major faiths are shown in the main diary

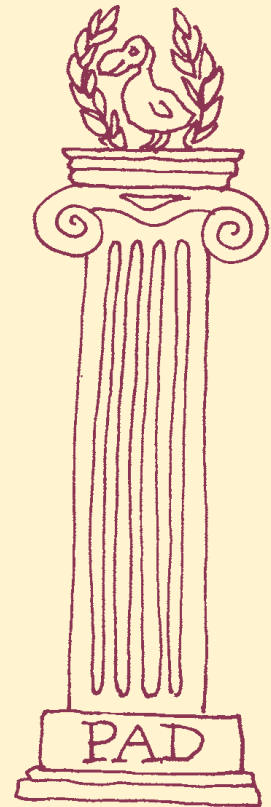
The phases of the moon will be shown thus :-

● NEW MOON ☾ FIRST QUARTER ○ FULL MOON ☽ LAST QUARTER

NEXT YEAR 2021



JANUARY		FEBRUARY		MARCH	
M	4 11 18 25	M	1 8 15 22	M	1 8 15 22 29
T	5 12 19 26	T	2 9 16 23	T	2 9 16 23 30
W	6 13 20 27	W	3 10 17 24	W	3 10 17 24 31
T	7 14 21 28	T	4 11 18 25	T	4 11 18 25
F	1 8 15 22 29	F	5 12 19 26	F	5 12 19 26
S	2 9 16 23 30	S	6 13 20 27	S	6 13 20 27
S	3 10 17 24 31	S	7 14 21 28	S	7 14 21 28
APRIL		MAY		JUNE	
M	5 12 19 26	M	3 10 17 24 31	M	7 14 21 28
T	6 13 20 27	T	4 11 18 25	T	1 8 15 22 29
W	7 14 21 28	W	5 12 19 26	W	2 9 16 23 30
T	1 8 15 22 29	T	6 13 20 27	T	3 10 17 24
F	2 9 16 23 30	F	7 14 21 28	F	4 11 18 25
S	3 10 17 24	S	18 15 22 29	S	5 12 19 26
S	4 11 18 25	S	2 9 16 23 30	S	6 13 20 27
JULY		AUGUST		SEPTEMBER	
M	5 12 19 26	M	2 9 16 23 30	M	6 13 20 27
T	6 13 20 27	T	3 10 17 24 31	T	7 14 21 28
W	7 14 21 28	W	4 11 18 25	W	1 8 15 22 29
T	1 8 15 22 29	T	5 12 19 26	T	2 9 16 23 30
F	2 9 16 23 30	F	6 13 20 27	F	3 10 17 24
S	3 10 17 24 31	S	7 14 21 28	S	4 11 18 25
S	4 11 18 25	S	18 15 22 29	S	5 12 19 26
OCTOBER		NOVEMBER		DECEMBER	
M	4 11 18 25	M	1 8 15 22 29	M	6 13 20 27
T	5 12 19 26	T	2 9 16 23 30	T	7 14 21 28
W	6 13 20 27	W	3 10 17 24	W	1 8 15 22 29
T	7 14 21 28	T	4 11 18 25	T	2 9 16 23 30
F	1 8 15 22 29	F	5 12 19 26	F	3 10 17 24 31
S	2 9 16 23 30	S	6 13 20 27	S	4 11 18 25
S	3 10 17 24 31	S	7 14 21 28	S	5 12 19 26



Published by Dodo Pad Ltd. The Old Stables, Liskey Hill, Perranporth, Cornwall TR6 0BB
 Compilation & Original Illustration by Naomi McBride 2019

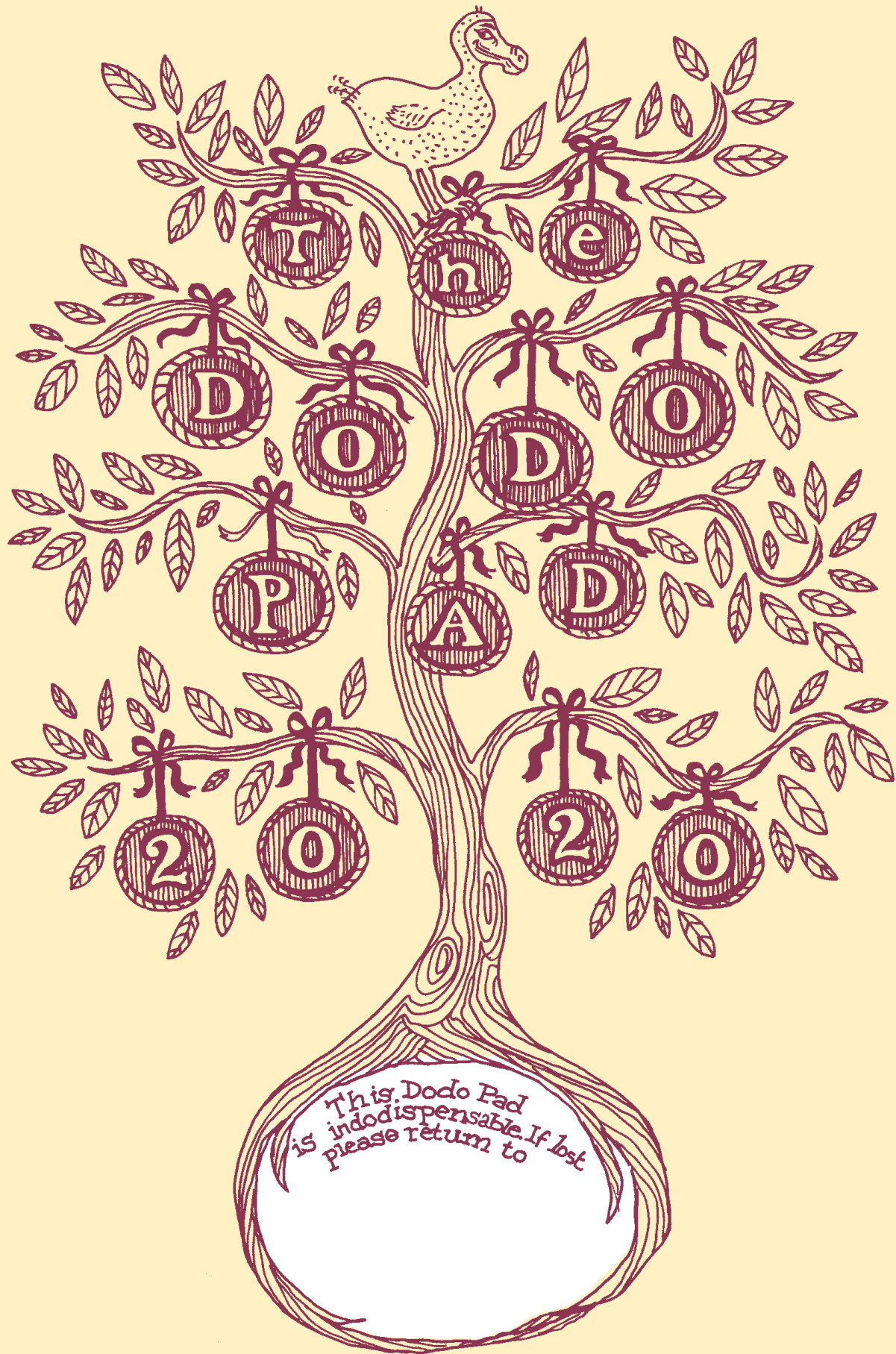
Illustrations © Dodo Pad Ltd 2019 © B M Peak 1995, 2019 © Rose Verney 1965, 2019

Dodo-Pad Desk Diary – ISBN 978 0 857702 18 0 / DodoPAX loose-leaf Diary – ISBN 978 0 87702 21 0

All rights reserved. No part of this publication may be reproduced or transmitted in any form, or by any means, electronic, mechanical, photocopying, recording or otherwise, or stored in any retrieval system, without prior permission of the publisher.

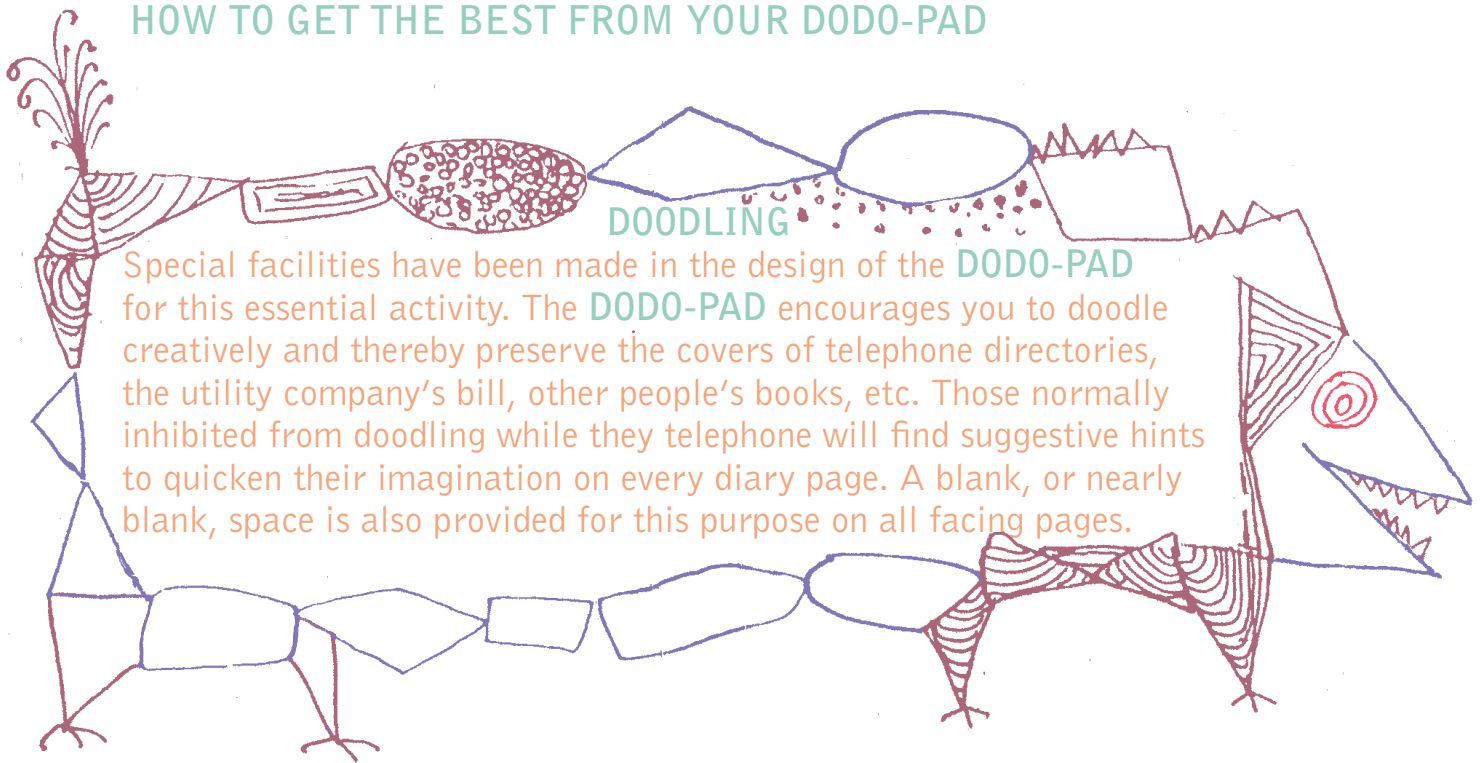
Reprographics by Peta Bull Design.

Printed using paper responsibly sourced from sustainable forests.



This Dodo Pad
is indodispensable. If lost
please return to

HOW TO GET THE BEST FROM YOUR DODO-PAD



Special facilities have been made in the design of the **DODO-PAD** for this essential activity. The **DODO-PAD** encourages you to doodle creatively and thereby preserve the covers of telephone directories, the utility company's bill, other people's books, etc. Those normally inhibited from doodling while they telephone will find suggestive hints to quicken their imagination on every diary page. A blank, or nearly blank, space is also provided for this purpose on all facing pages.

FURTHER USES FOR THE DODO PAD

Finished sheets can be torn out and are especially suitable for making paper boats, darts, book-markers or tapers for lighting a barbeque. If folded into eight, a **DODO-PAD** page comes in handy for wedging up a rickety table or stuffing onto a shaky sash-window.

The most attractively doodled pages make a personal type of Christmas card.

INSECTICIDE

The **DODO-PAD** makes an ideal weapon for swatting flies. Held flat on the palm of the hand, it can also be used as a missile against wasps and mosquitoes on the ceiling.

The **DODO-PAD** is so designed that it may be carried in a shopping basket or kept chained to the telephone (for instructions on how to chain your **DODO-PAD** to the telephone see para. on opposite page).



“While he was giggling over my **DODO-PAD** I was able to get dressed and call the police” (name supplied).

DODO-PAD ALBUMS

If, at the end of a year, you wish to keep what amounts to a unique record of your, or your family’s conscious and unconscious experience, we supply leather-bound folders with gold embossed lettering. Prices from £1069.50.

CHRISTMAS AND BIRTHDAYS

Extra pages are provided at the end to facilitate the systematic giving, or receipt, of presents. And for playing...

THE DODO-PAD GAME

Time can be pleasantly spent, while waiting for a Call Centre to answer, by imagining yourself as some well-known personality and filling in his or her engagements. But bear in mind the laws of libel, if your **DODO-PAD** is liable to be seen by others outside the family circle.

HOW TO CHAIN YOUR DODO-PAD TO THE TELEPHONE

Any reputable ironmonger will supply you with a length of thin chain. A **DODO-PADLOCK** can be obtained from us. Price £799.99, including postage.

DODO-PADDLERS ARE ADVISED TO ORDER THEIR NEXT YEAR’S DODO-PAD WELL IN ADVANCE TO BE SURE OF SAFE DELIVERY

© Rose Verney 1965, 2019 © B. M. Peak 1995, 2019

While Dodo Pad (the Publishers) makes every effort to ensure the accuracy of the information contained in this diary, no representations or warranties are made as to the accuracy, completeness, or suitability for any purpose of the information contained, which may include technical inaccuracies or typographical errors which may be outside of the Publisher’s control such as changes to Bank Holiday dates. All liability of the Publisher howsoever arising for such inaccuracies or errors is expressly excluded to the fullest extent permitted by law. The Publisher shall not be liable for any compensatory, direct, indirect or consequential damages, loss of data, income or profit, loss of or damage to property or claims of third parties. Dodo Pad is a trading name of Dodo Pad Limited.

2020

JANUARY 2020			FEBRUARY 2020		
1 W	NEW YEAR'S DAY (UK, EIRE, US, AUS & NZ)	17 F	1 S		17 M PRESIDENTS' DAY (US)
2 TH	BANK HOLIDAY (SCOT)	18 S	2 SU		18 T
3 F		19 SU	3 M		19 W
4 S		20 M	4 T		20 TH
5 SU		21 T	5 W		21 F
6 M		22 W	6 TH	WAITANGI DAY (NZ)	22 S
7 T		23 TH	7 F		23 SU
8 W		24 F	8 S		24 M
9 TH		25 S	9 SU		25 T SHROVE TUESDAY
10 F		26 SU	10 M		26 W
11 S		27 M	11 T		27 TH
12 SU		28 T	12 W		28 F
13 M		29 W	13 TH		29 S
14 T		30 TH	14 F		Public Holidays et al. This information is correct at time of going to press. The publishers can accept no responsibility for any errors.
15 W		31 F	15 S		
16 TH			16 SU		
MARCH 2020			APRIL 2020		
1 SU		17 T	1 W		17 F
2 M		18 W	2 TH		18 S
3 T		19 TH	3 F		19 SU
4 W		20 F	4 S		20 M
5 TH		21 S	5 SU		21 T
6 F		22 SU	6 M		22 W
7 S		23 M	7 T		23 TH
8 SU		24 T	8 W		24 F RAMADAN BEGINS
9 M	CANBERRA DAY (AUS) COMMONWEALTH DAY	25 W	9 TH	PASSOVER	25 S
10 T		26 TH	10 F	GOOD FRIDAY	26 SU
11 W		27 F	11 S		27 M ANZAC DAY (AUS & NZ)
12 TH		28 S	12 SU	EASTER DAY	28 T
13 F		29 SU	13 M	EASTER MONDAY	29 W
14 S		30 M	14 T		30 TH
15 SU		31 T	15 W		
16 M			16 TH		
MAY 2020			JUNE 2020		
1 F		17 SU	1 M	BANK HOLIDAY (EIRE)	17 W
2 S		18 M	2 T		18 TH
3 SU		19 T	3 W		19 F
4 M	MAY BANK HOLIDAY (UK & EIRE)	20 W	4 TH		20 S
5 T		21 TH	5 F		21 SU FATHER'S DAY (UK, US & CAN)
6 W		22 F	6 S		22 M
7 TH		23 S	7 SU		23 T
8 F		24 SU	8 M		24 W
9 S		25 M	9 T		25 TH
10 SU		26 T	10 W		26 F
11 M	MOTHER'S DAY (US & AUS)	27 W	11 TH		27 S
12 T		28 TH	12 F		28 SU
13 W		29 F	13 S		29 M
14 TH		30 S	14 SU		30 T
15 F		31 SU	15 M		
16 S			16 T		

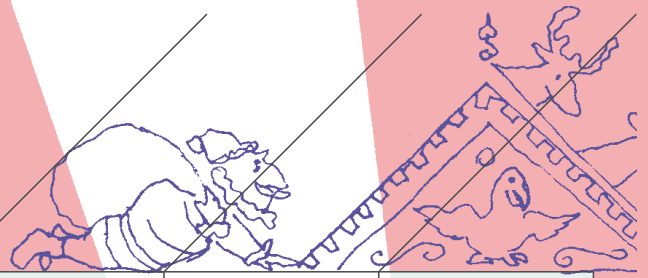
2020

JULY 2020			AUGUST 2020		
1 W	CANADA DAY	17 F	1 S		17 M
2 TH		18 S	2 SU		18 T
3 F	INDEPENDENCE DAY OBS (US)	19 SU	3 M	SUMMER BANK HOLIDAY (SCOTLAND & EIRE)	19 W
4 S		20 M	4 T		20 TH
5 SU		21 T	5 W		21 F
6 M		22 W	6 TH		22 S
7 T		23 TH	7 F		23 SU
8 W		24 F	8 S		24 M
9 TH		25 S	9 SU		25 T
10 F		26 SU	10 M		26 W
11 S		27 M	11 T		27 TH
12 SU		28 T	12 W		28 F
13 M	PUBLIC HOLIDAY (N. IRELAND)	29 W	13 TH		29 S
14 T	BASTILLE DAY	30 TH	14 F		30 SU
15 W		31 F	15 S		31 M
16 TH			16 SU		SUMMER BANK HOLIDAY (UK)
SEPTEMBER 2020			OCTOBER 2020		
1 T		17 TH	1 TH		17 S
2 W		18 F	2 F		18 SU
3 TH		19 S	3 S		19 M
4 F		20 SU	4 SU		20 T
5 S		21 M	5 M		21 W
6 SU	FATHER'S DAY (AUS)	22 T	6 T		22 TH
7 M	LABOR DAY (US & CAN)	23 W	7 W		23 F
8 T		24 TH	8 TH		24 S
9 W		25 F	9 F		25 SU
10 TH		26 S	10 S		26 M
11 F		27 SU	11 SU		27 T
12 S		28 M	12 M	COLUMBUS DAY (US) THANKSGIVING (CANADA)	28 W
13 SU		29 T	13 T		29 TH
14 M		30 W	14 W		30 F
15 T			15 TH		31 S
16 W			16 F		HALLOWE'EN
NOVEMBER 2020			DECEMBER 2020		
1 SU		17 T	1 T		17 TH
2 M		18 W	2 W		18 F
3 T		19 TH	3 TH		19 S
4 W		20 F	4 F		20 SU
5 TH	GUY FAWKES' NIGHT	21 S	5 S		21 M
6 F		22 SU	6 SU		22 T
7 S		23 M	7 M		23 W
8 SU	REMEMBRANCE SUNDAY (UK)	24 T	8 T		24 TH
9 M		25 W	9 W		25 F
10 T		26 TH	10 TH		26 S
11 W	VETERANS' DAY (US) REMEMBRANCE DAY (CAN)	27 F	11 F	HANUKKAH	27 SU
12 TH		28 S	12 S		28 M
13 F		29 SU	13 SU		29 T
14 S	DIWALI	30 M	14 M		30 W
15 SU			15 T		31 TH
16 M			16 W		



Lord Dodo takes to the floor with Miss Peabody, his indodispensable PA, at the company's Christmas Ball, held in the lofty surroundings of the Dodo Towers ballroom.

D 2019 December



Week 52

23
Monday

Hanukkah

24
Tuesday

25
Wednesday

Christmas Day

26
Thursday

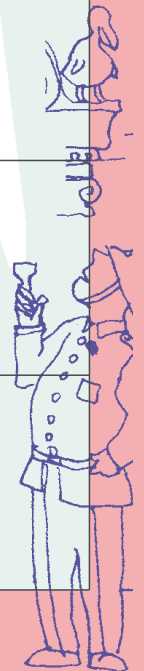
Boxing Day UK, AUS, NZ

St Stephen's Day IRE

27
Friday

28
Saturday

29
Sunday



INCOME TAX
DAY £100

WHITEDODO ROAD
£40

WHITEDODO ROAD



COMMUNITY DODO

OLD DODO ROAD
£40

OLD DODO ROAD

COLLECT £200 SALARY
WHEN YOU PASS
GO

DODO SQUARE
£200

DODO SQUARE

DODO TAX
8
PAY £200

DODO LANE
£200

DODO LANE

DECEMBER 2019 & JANUARY 2020



Week 1



MONDAY



TUESDAY

New Year's Eve

1935 Charles Darrow patented the board game 'Monopoly'



WEDNESDAY

New Year's Day



THURSDAY

Bank Holiday SCOT



FRIDAY

3



SATURDAY

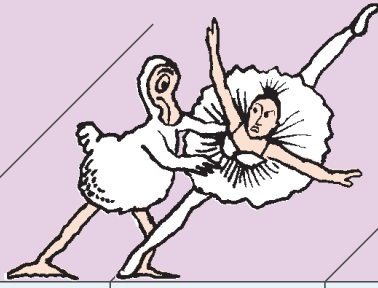


SUNDAY



Without dance, what's the point?

January 2020



Week 4

20
Monday

Martin Luther King, Jr Day

21
Tuesday

22
Wednesday

23
Thursday

1931 Death of ballerina Anna Pavlova

24
Friday

25
Saturday

Burns Night

Chinese New Year

26
Sunday

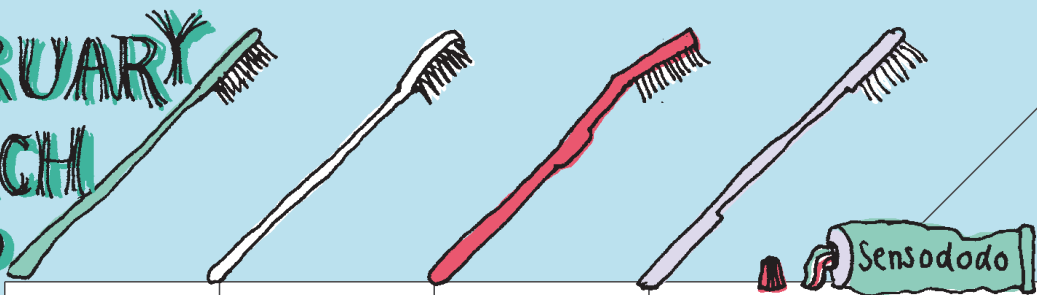


STAN'S HOUR

What's another word
for THESAURUS



FEBRUARY
MARCH
2020



Week 9

24

MONDAY

1938 Production of first commercially-made nylon products -
toothbrushes - in Arlington, NJ

25

TUESDAY

Shrove Tuesday

26

WEDNESDAY

Ash Wednesday

27

THURSDAY

28

FRIDAY

29

SATURDAY



SUNDAY

St David's Day



BRONTĚSAURUS

March
April
2020



30

Monday

Week 14

31

Tuesday

1855 Death of Charlotte Brontë

1

Wednesday

3

2

Thursday

3

Friday

4

Saturday

5

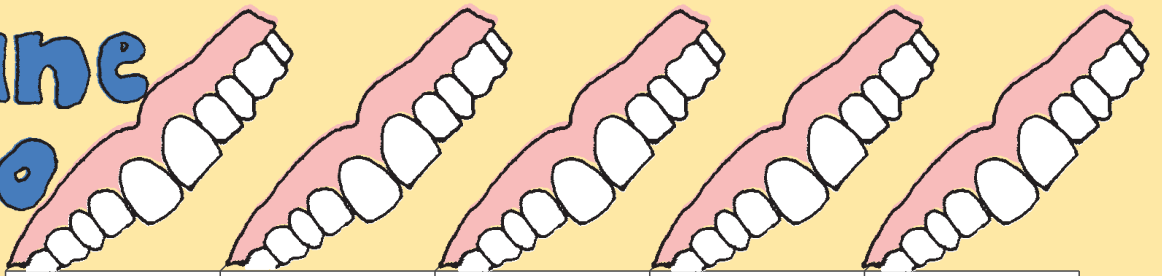
Sunday

DST ends AUS & NZ

Some aids to living can be cast aside at bedtime - but the Dodo Pad is indispensable 24/7.



June 2020



8

Monday

Queen's Birthday AUS

Week 24

9

Tuesday

1822 False teeth patented by Charles Graham

10

Wednesday

11

Thursday

12

Friday

13

Saturday

14

Sunday

ⓔ



DELI LAMA

MAKE ME ONE WITH EVERYTHING

PANINIS
menu

SALADS
menu

SANDWICHES
menu

Lord Dodo loves auction rooms, always looking to expand his collection of family portraits that hang in the Long Gallery at Dodo Towers, so he was thrilled to snap up this gem recently. Note the strong family likeness; he understands Miss Rhododo is indeed related - on the distaff side...



September 2020

14

Monday

15

Tuesday

16

Wednesday

17

Thursday

18

Friday

19

Saturday

20

Sunday

Week 38

Rosh Hashanah

1941 Birth of designer Zandra Rhodes





A Box without Hinges, Key or Lid,
Yet Golden Treasure Inside is Hid.

Ancient riddle

