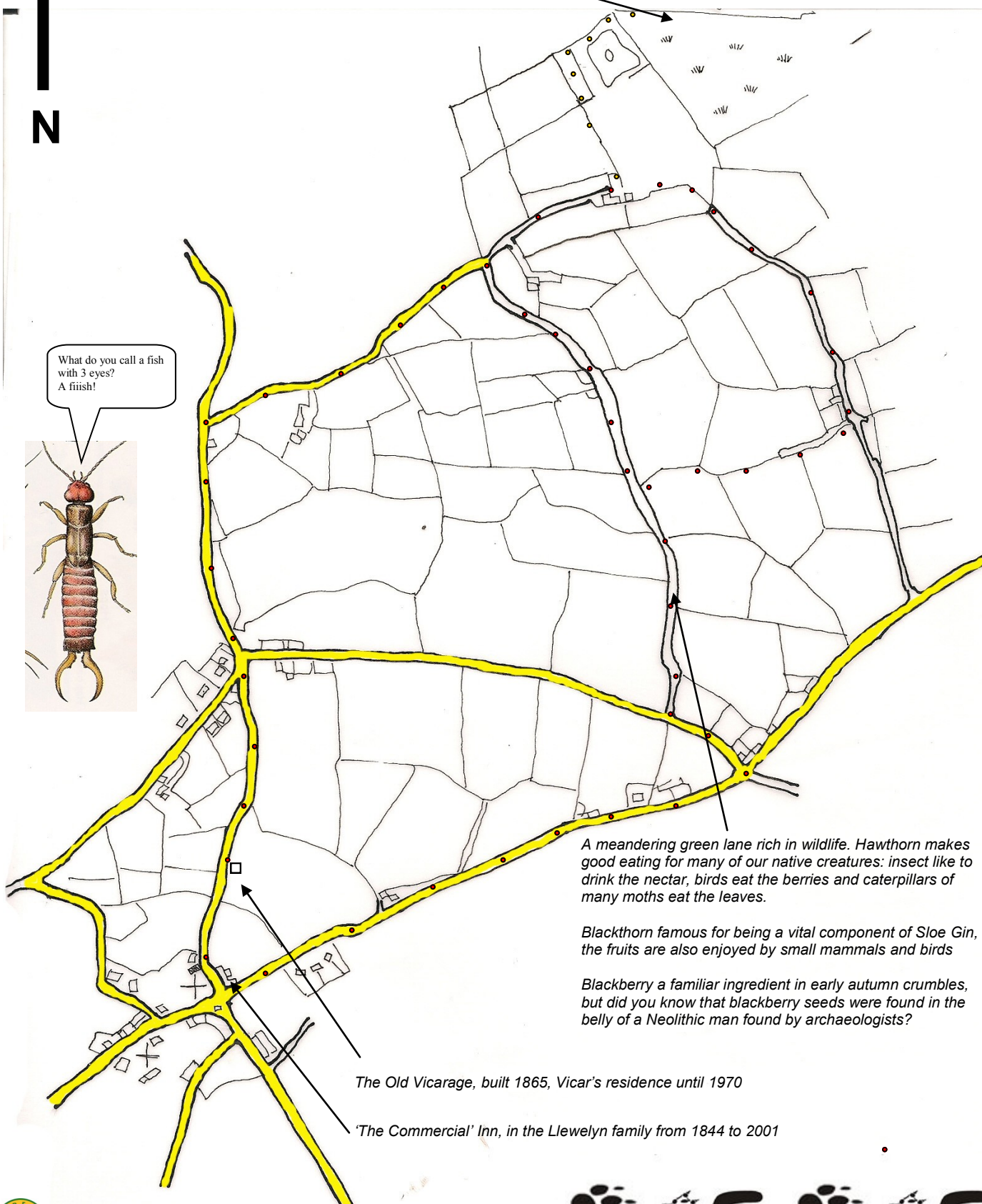
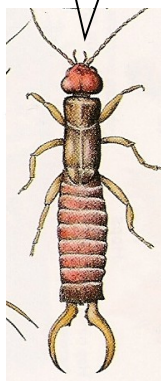


Cilcennin circular family walk



Why not take a short detour to discover the beautiful woodland lake

What do you call a fish with 3 eyes?
A fiish!



A meandering green lane rich in wildlife. Hawthorn makes good eating for many of our native creatures: insect like to drink the nectar, birds eat the berries and caterpillars of many moths eat the leaves.

Blackthorn famous for being a vital component of Sloe Gin, the fruits are also enjoyed by small mammals and birds

Blackberry a familiar ingredient in early autumn crumbles, but did you know that blackberry seeds were found in the belly of a Neolithic man found by archaeologists?

The Old Vicarage, built 1865, Vicar's residence until 1970

'The Commercial' Inn, in the Llewelyn family from 1844 to 2001

