

Handcrafted in Devon

Efficient Green Clean

All Woodwarm stoves feature our advanced clean burn air wash system.

After circulating the stove, pre-heated air flushes down the double glazed door, keeping the glass perfectly clean at all times - even at low temperatures.

Superior clean burn efficiency means that not only is more heat achieved on less fuel, but combustion products in the flue are also reduced, causing fewer flue problems.

Reduction in pollution combined with greater efficiency creates a really environmentally friendly stove.

CE
EN13240



Handcrafted in Devon

For over 40 years we have handcrafted Woodwarm stoves in the heart of the Devon countryside.

Our passion for quality, design and the environment has helped us produce a range of wood burning and multifuel stoves that combine state of the art efficiency with reduced pollution to create really environmentally friendly stoves.

Woodwarm stoves are constructed with steel and cast iron and have stainless steel fittings. Each one individually built by craftsmen and rigorously tested to ensure consistent quality.

We are also passionate about design and detail and have created a range of innovative, contemporary and traditional stoves that will provide the focal point of any home.

We hope you share our passion and enjoy our stoves for years to come.



Fireview Slender range

The reduced depth of the Slender range means they can fit better in rooms where the fireplace recess is shallower than normal.

**Please note that low curved canopy slender stoves are only available with a rear flue outlet.*



The Fireview Slender 5kW

- Multifuel stove. Perfect for woodburning only, as grate forms a flat bed
- Perfect for shallow fireplaces
- Max log length. 368mm
- Flue size. 152mm
- Full riddling grate & ash pan
- Tops available. Profiled Flat Top, Flat Top, Low Curved Canopy*
- Straight sides optional
- Option of brass fittings (extra cost)



Energy rating



The Fireview Slender 7kW

- Multifuel stove. Perfect for woodburning only, as grate forms a flat bed
- Perfect for shallow fireplaces
- Max log length. 430mm
- Flue size. 152mm
- Full riddling grate & ash pan
- Tops available. Profiled Flat Top, Flat Top, Low Curved Canopy*
- Straight sides optional
- Option of brass fittings (extra cost)



Energy rating



The Fireview Slender 10kW PLUS

- Multifuel stove. Perfect for woodburning only, as grate forms a flat bed
- Perfect for shallow fireplaces
- Large glass door for better view of flames
- Max log length. 483mm
- Flue size. 177mm
- Full riddling grate & ash pan
- Tops available. Profiled Flat Top, Flat Top, Low Curved Canopy*
- Straight sides optional
- Option of brass fittings (extra cost)



Energy rating



The Fireview Slender 14kW

- Multifuel stove. Perfect for woodburning only, as grate forms a flat bed
- Perfect for shallow fireplaces
- Large glass door for better view of flames
- Max log length. 588mm
- Flue size. 177mm
- Full riddling grate & ash pan
- Tops available. Profiled Flat Top, Flat Top, Low Curved Canopy*
- Straight sides optional
- Option of brass fittings (extra cost)



Energy rating



Slender 5kW profile flat top with rear flue adaptor

The Fireview range

The Fireview multifuel range is designed to meet all your heating needs, with outputs ranging from 5kW to 20kW to heat any size of room. Woodwarm Fireview stoves epitomise the design detail of an efficient air washed clean burning stove. They are also exceptionally easy to light and use.



The Fireview 6kW

- Multifuel stove. Perfect for wood-burning only, as grate forms a flat bed
- Max log length. 368mm
- Flue size. 152mm
- Tops available. Profiled Flat Top, Flat Top, Low & High Curved Canopy
- Full riddling grate & ash pan
- Straight sides optional
- Option of brass fittings (extra cost)



The Fireview 9kW

- Multifuel stove. Perfect for wood-burning only, as grate forms a flat bed
- Max log length. 430mm
- Flue size. 152mm
- Tops available. Profiled Flat Top, Flat Top, Low & High Curved Canopy
- Full riddling grate & ash pan
- Straight sides optional
- Option of brass fittings (extra cost)



The Fireview 12kW

- Multifuel stove. Perfect for wood-burning only, as grate forms a flat bed
- Max log length. 483mm
- Flue size. 152mm
- Tops available. Profiled Flat Top, Flat Top, Low & High Curved Canopy
- Full riddling grate & ash pan
- Straight sides optional
- Option of brass fittings (extra cost)





Fireview 6kW flat top

The Fireview range continued

There are plinths and pedestals available for all this range. The standard height would be 200mm (see page 15). There are legs from 50mm through to 150mm. The stoves can be built with straight sides at no extra cost, just speak to your dealer to ensure your choice.



The Fireview 12kW PLUS

- Multifuel stove. Perfect for wood-burning only, as grate forms a flat bed
- Large glass door for better view of flames
- Max log length. 483mm
- Flue size. 177mm
- Tops available. Profiled Flat Top, Flat Top, Low & High Curved Canopy
- Full riddling grate & ash pan
- Straight sides optional
- Option of brass fittings (extra cost)



Energy rating



The Fireview 16kW

- Multifuel stove. Perfect for wood-burning only, as grate forms a flat bed
- Large glass door for better view of flames
- Max log length. 588mm
- Flue size. 177mm
- Tops available. Profiled Flat Top, Flat Top, Low Curved Canopy
- Full riddling grate & ash pan
- Straight sides optional
- Option of brass fittings (extra cost)



Energy rating



The Fireview 20kW

- Multifuel stove. Perfect for wood-burning only, as grate forms a flat bed
- Large glass door for better view of flames
- Max log length. 635mm
- Flue size. 177mm
- Tops available. Profiled Flat Top, Flat Top, Low Curved Canopy
- Full riddling grate & ash pan
- Straight sides optional
- Option of brass fittings (extra cost)



Energy rating

Fireview Double Sided



Double depth 6kW with flat top and plinth.
Log hopper shown is also available.



A Fireview stove with a door on both sides for a fantastic view of the fire from either side, still incorporating all the features of the single sided Fireview including the Woodwarm air wash system. De-ashing and riddling can be accessed on both sides. The Fireview 6kW is available in either single depth or double depth versions. Integral log store style base available on request.

The Fireview 6kW Double Sided Single Depth

- View of the fire from both sides
- Multifuel stove. Perfect for wood-burning only, as grate forms a flat bed
- Max log length. 368mm
- Flue size 152mm
- Tops available. Profiled Flat Top, Flat Top, Low Curved Canopy
- Full riddling grate & ash pan
- Straight sides optional
- Option of brass fittings (extra cost)



Energy rating

The Fireview 6kW (12kW output) Double Sided Double Depth Flat Top

- View of the fire from both sides
- Multifuel stove. Perfect for wood-burning only, as grate forms a flat bed
- Max log length. 530mm
- Flue size 152mm
- Tops available. Profiled Flat Top, Flat Top, Low Curved Canopy
- Full riddling grate & ash pan
- Straight sides optional
- Option of brass fittings (extra cost)



Energy rating

Wildwood range

The Wildwood range of wood burning stoves has been developed to be environmentally friendly. All the Wildwood stoves have the option of either a profiled flat top, flat top or low curved canopy. There is a choice of any of the three base options shown below at no extra cost.



The Wildwood Slender 5kW

- Slender Woodburning only stove
- Perfect for shallow fireplaces
- Max log length. 368mm
- Flue size. 152mm
- Tops available. Profiled Flat Top, Flat Top, Low Curved Canopy
- Option of brass fittings (extra cost)
- Shown here with Log Store Style Base



Energy rating



The Wildwood 6kW

- Woodburning only stove
- Max log length. 368mm
- Flue size. 152mm
- Tops available. Profiled Flat Top, Flat Top, Low Curved Canopy
- Option of brass fittings (extra cost)
- Shown here with Standard Base



Energy rating



The Wildwood 9kW

- Woodburning only stove
- Max log length. 430mm
- Flue size. 152mm
- Tops available. Profiled Flat Top, Flat Top, Low Curved Canopy
- Option of brass fittings (extra cost)
- Shown here with Fireview Leg Style Base



Energy rating

Why wood is good

Wood fuel can be carbon neutral. It absorbs as much carbon in it's growth as it releases when burnt. Reducing carbon emissions that lead to greenhouse gases means wood is the fuel of the future. Only burn dry wood fuel. Fuel with more than 20% moisture will seriously impede the performance of your stove.

To find a sustainably sourced supplier please visit woodsure.co.uk

The Wildwood Range of stoves are also available in sizes 7kW Slender, 10kW PLUS Slender, 12kW, 12kW PLUS, 14kW Slender, 16kW and 20kW



Wildwood 5kW with integral log store style base.



Foxfire 4kW with integral log store style base.

Foxfire

The little Foxfire stove has stunning 82% efficiency and benefits from the Woodwarm advanced clean burn air wash system that keeps the glass clear at all times. The stunning stainless steel handles and hinges give this stove a sleek finish. A rear heatshield is fitted as standard and there are options of 50mm, 100mm or 150mm legs or a 200mm plinth.

The Foxfire is also available with a log store style base giving an overall height of 750mm (as pictured).



2 Foxfire options available

The Foxfire SE 4kW

- Approved for smokeless areas
- Woodburning only
- Max log length. 300mm
- Flue size 127mm
- Profiled Flat Top as standard
- Full riddling grate & ash pan
- Legs and log store style bases available



Energy rating

The Foxfire 4kW

- Multifuel stove. Perfect for woodburning only, as grate forms a flat bed
- Max log length. 300mm
- Flue size 127mm
- Profiled Flat Top as standard
- Full riddling grate & ash pan
- Legs and log store style bases available



Energy rating

Sizes **Foxfire. Fireview & Fireview Slender ranges**

(S) For Slender version, (kW) For kilowatts, All dimensions are in mm.
Please remember to add 40mm to height, to allow for the Flue collar.

Model	4kW Fox	5kW(S)	6kW	7kW(S)	9kW	10kW+(S)	12kW	12kW+	14kW(S)	16kW	20kW
(S for slender) (in mm)											
Max Log Length	300	368	368	430	430	483	483	483	588	588	635
Overall Height (Add 200mm for Fireview integral log store style)											
Profiled Flat Top	530	605	605	670	670	695	680	695	735	735	735
Flat Top	n/a	610	610	676	676	700	685	700	745	745	745
Low Curved Canopy	n/a	822	822	910	910	922	933	949	1060	1060	1050
High Curved Canopy	n/a	n/a	940	n/a	1044	n/a	1048	1070	n/a	n/a	n/a
Overall Width											
Profiled Flat Top	435	505	505	595	595	630	630	630	714	714	770
Flat Top	n/a	555	555	640	640	675	675	675	742	742	800
Low Curved Canopy	n/a	600	605	710	710	680	747	747	813	813	865
High Curved Canopy	n/a	n/a	590	n/a	710	n/a	747	757	n/a	n/a	n/a
Overall Depth											
Profiled Flat Top	370	302	365	307	365	345	445	445	371	445	486
Flat Top	n/a	322	387	320	385	371	455	455	393	462	500
Low Curved Canopy	n/a	336	395	346	410	362	500	498	386	500	538
High Curved Canopy	n/a	n/a	405	n/a	410	n/a	486	485	n/a	n/a	n/a
Flue Outlet Size	127	152	152	152	152	177	152	177	177	177	177
Height to centre of rear flue	425	462	462	473	473	484	481	484	517	517	517
Top Flue centre from rear of stove (F/T shown)	135	131	156	131	156	156	156	156	175	171	175
Efficiency % (solid fuel)* Foxfire NonSE only	*82.1	69.8	69.8	69.8	74.7	69.8	68.9	68.9	69.3	69.3	69.3
Efficiency % (Wood)	82	79.7	79.7	78.5	78.5	71.7	73.6	74	73.6	73.6	73.6A
Energy Rating	A+	A	A	A	A	A	A	A	A	A	A

Fireview Double range

All dimensions are in mm. Please remember to add 40mm to height for the Flue collar.

Model	6kW Double Single (actual output 6.4kW)	6kW Double Depth (actual output 12.2kW)
Max Log Length	368	530
Overall Height		
Profiled Flat Top	605	605
Flat Top	605	605
Low Curved Canopy	830	822
Overall Width		
Profiled Flat Top	505	505
Flat Top	555	555
Low Curved Canopy	604	595
Overall Depth		
Profiled Flat Top	405	730
Flat Top	436	752
Low Curved Canopy	405	752
Flue Outlet Size	152	152
Top flue centre from the rear of the stove (F/T shown)	218	376
Efficiency % (solid fuel)	77.4	82.8
Efficiency % (Wood)	76.4	80.9
Energy Rating	A	A+



Wildwood range (S) For Slender version, (kW) For kilowatts, All dimensions are in mm. Please remember to add 40mm to height, to allow for the Flue collar.

Model	5kW(S)	6kW	7kW(S)	9kW	10kW+(S)	12kW	12kW+	14kW(S)	16kW	20kW
<small>(S for slender) (in mm)</small>										
Max Log Length	368	368	430	430	483	483	483	588	588	635
Overall Height (Add 100mm for Integral Log Store Style)										
Profiled Flat Top	679	679	719	719	762	719	762	757	757	740
Flat Top	682	682	722	722	766	725	766	758	758	750
Low Curved Canopy	899	899	957	957	1016	982	1016	1080	1080	1055
Overall Width										
Profiled Flat Top	505	505	595	595	630	630	630	714	714	770
Flat Top	555	555	640	640	675	675	675	742	742	800
Low Canopy	600	605	710	710	747	747	747	813	813	865
Standard & F/V Base (at its widest point)	560	560	650	650	680	680	680	750	750	790
Overall Depth (Flat Top / Low Canopy)										
Profiled Flat Top	302	365	307	365	345	455	445	371	445	486
Flat Top	322	387	320	385	371	455	455	393	462	500
Low Canopy	336	395	346	410	362	500	498	386	500	538
Standard & F/V Base (at its deepest point)	400	470	395	460	450	540	540	450	550	570
Top flue centre to the back of stove FT	131	156	131	156	156	156	156	175	171	175
Top flue centre to the back of stove PFT	118.5	151	118.5	151	151	151	151	161	161	161
Top flue centre to the back of stove Low Canopy	N/A	117.5	N/A	117.5	115	117.5	117.5	140	140	160
Flue Outlet Size	152	152	152	152	177	152	177	177	177	177
Height to the centre of the Rear Flue (Standard & F/V Base)	532	532	521	521	548	523	548	540	540	523
Efficiency % (Wood)	79.1	79.1	78.5	78.5	71.7	73.6	74	73.6	73.6	73.8
Energy Rating	A	A	A	A	A	A	A	A	A	A

Broad Notes

We produce over 90 models of our stoves. For this reason we have not detailed all models. Please ask your local dealer for more details or consult our website

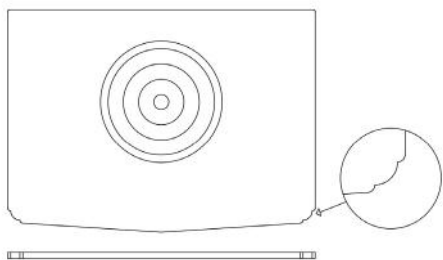
www.woodwarmstoves.co.uk

Woodwarm stoves have removable smoke baffles that mean the stoves can be swept through once the baffle has been removed. When a rear flue adaptor, (available as an optional extra), is fitted the stoves can be swept through the rear outlet in the same way. All our stoves have interchangeable top or rear flue options.

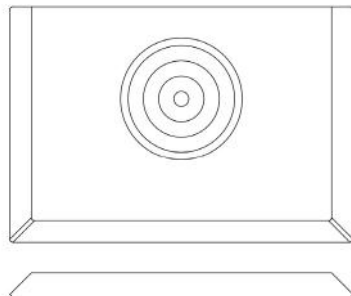
Please note profiled flat tops are welded to the stove and are not removable.

Lid Styles

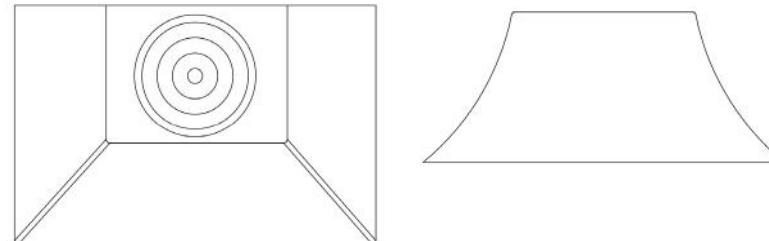
Profiled Top



Flat Top



Curved Canopy



Helpful hints to aid your choice of stove

Sizing

A good rule of thumb guide to calculate the heat requirement of a given room is:

Height x Width x Depth in metres divided by 14.
(Divide the cubic footage of the room by 500).

This will give you the kilowatt requirement.

Formula: $\frac{H \times W \times D}{14} = \text{kilowatts}$.

This is based on average house insulation with room temperatures of 20°C and an outside ambient temperature of -1°C.

Accessories: Available as extras to the stove

Brass fittings are available on Fireview and Wildwood Models, at an extra cost, (see page 6, Fireview 12kW).

Log Store Style Base available on Foxfire and Fireview ranges.

Leg sets available from 50mm to 150mm (see page 9, 100mm legs shown).

Plinths and Pedestals are 200mm high as standard. (See page 9, Plinth shown).

Single/double skin heat shields can reduce the distance to combustibles at the rear of the stove, they are available for all models.

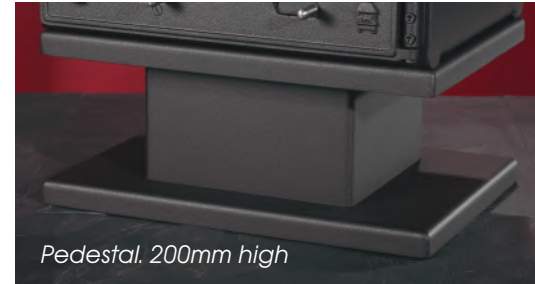
Rear Flue Adaptors available for all models.

Log hopper (see page 9) and log cradle.

Dual purpose thermometer which can be used on the flue or the stove and will help with the optimum running of the appliance.

Only burn dry wood. Fuel with more than 20% moisture will seriously impede the performance of your stove. To find a sustainably sourced supplier please visit woodsure.co.uk

Booklets detailing installation requirements and operating instructions are supplied with each stove.



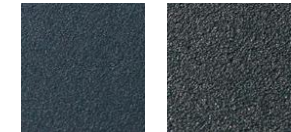
Colours

Available in a range of Stove Bright® colours. (Approximate colour representation only. Ask your dealer for details).



Rich brown metallic

Honey-glo brown



Metallic blue

Charcoal



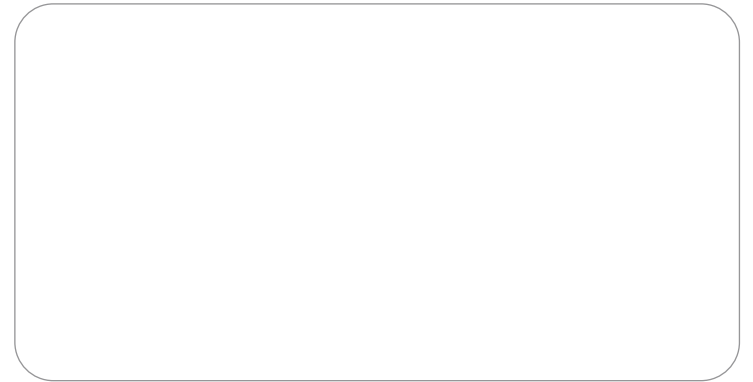
Metallic black

The Illustrations in this brochure do not necessarily comply with local building regulations. Woodwarm Stoves are all defined as Class 1 appliances. Fuel is not to be stored under or around any stove while the stove is in use.

All measurements are approximate.

Metal Developments Ltd reserve the right to change their specifications at any time.

See Wildwood leg style options on page 10.



Metal Developments Ltd. The Workshop, Wheatcroft Farm, Cullompton, Devon EX15
1RA
Telephone: **01884 35806** Fax: **01884 35505** Email: sales@woodwarmstoves.co.uk
www.woodwarmstoves.co.uk

WOODWARM
STOVES 