

RJS ELECTRONICS LIMITED

POUSSOIR
PULSANTE
TASTER DIPSWITCH
METAL
LED
SWITCHES
PULSADOR TOGGLE
LCD
TACTILE
RELAYS
RGB
BUTTONS
ILLUMINATED
ANTIVANDAL
DRUCKTASTER
KEYS
CABLES
MOMENTARY
ENCODERS
CUSTOM

RJS ELECTRONICS LIMITED

RJS Electronics Ltd - The History

RJS Electronics Ltd was founded in January 2003 by Richard Sucher. With over 30 years experience of working in the Electronic Components Sector, Richard focused on the professional Audio and Video sectors and the need for the latest technology switches and displays demanded within those markets. RJS Electronics is centrally located in Bedford, UK and in addition to supplying the domestic market, exports to customers worldwide.

RJS Electronics has had an extremely successful start by securing orders in the first week of trading. We have grown in turnover consistently since our inception and continue to look to the future. We also pride ourselves on our growing multi-national base of customers.

We believe the following is important to not only securing business but maintaining it:

- Supply quality products at competitive pricing
- Provide a high level of service
- Offer a wide choice of product ranges
- Listen to our customers and deal with specific requirements
- Introduce new products regularly
- Enable fast and effective lead times

Although RJS Electronics Ltd is a specialist switch supplier to the Audio and Video industry sectors, we have expanded our customer markets to include Door Entry Systems, Security, Telecommunications, Home Automation, Control Panels, Medical, Military , Vending Machines and Computer Equipment manufacturers.




Contents

LCD Switch (Q5) + Large LED Switch	Page 4
Small Illuminated Switches (Tactile and Non-Tactile)	Page 5 - 9
Low Profile Tactile Switches 10mm - 16mm	Page 10 - 11
Medium to Large Illuminated Switches	Page 12 - 15
Rocker Style Switch	Page 15
Right Angle Mount Switches <i>Series PB613/PB615 also available in right angle version</i>	Page 16 - 18
Navigation Switch Modules <i>Laser etching available on majority of switches to make your own navigation module</i>	Page 18 - 19
Panel Mount Switches	Page 19 - 36
- Panel Mount Navigation Module	Page 19
- Small LED Illuminated Switches	Page 19 - 20
- Medium to Large LED Illuminated Switches	Page 21 - 22
- Capacitive Touch Switches	Page 23
- Antivandal Switches (IP Rated Switches, Dust / Water Proof)	Page 24 - 36
- Ø 12mm Cut-out (IP65 / IP67)	Page 24 - 25
- Ø 16mm Cut-out (IP65 / IP67)	Page 25 - 26
- Ø 19mm Cut-out (IP65 / IP67 / IP68)	Page 27 - 29
- Ø 22mm Cut-out (IP65 / IP67)	Page 30 - 31
- Ø 25mm Cut-out (IP65 / IP67)	Page 31
- Ø 28mm Cut-out (IP65 / IP67)	Page 32
- Ø 30mm Cut-out (IP65 / IP67)	Page 32
- Piezoelectric Switches (Touch Sensitive, IP Rated Switches, Dust / Water Proof)	Page 33 - 36
Motorised Faders (Slide Potentiometers)	Page 37
LED Touch Encoder / Variable Resistor	Page 38
Potentiometers, Encoders, Toggle Switches, Dipswitches, Relays	Page 38 - 39
LCD Character and Graphic Modules	Page 40 - 41

The products shown in this catalogue are an example of what we have to offer, product images and diagrams are for illustrative purposes only and may not be to scale.

Q5 • LCD Programmable Switch

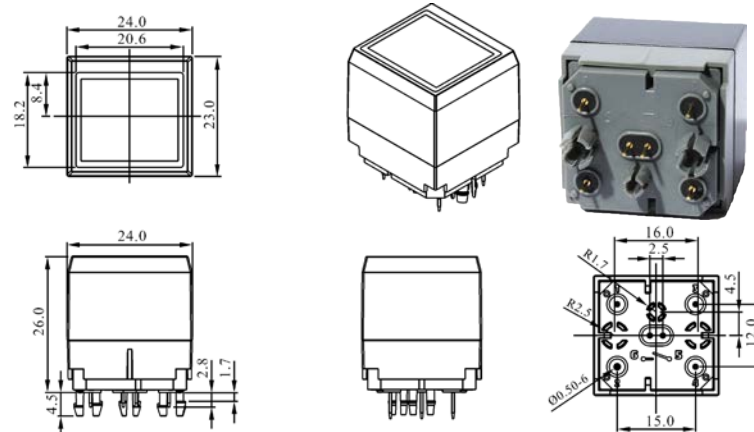
<http://files.rjselectronics.com/q5.pdf>

- SPI Bi-directional Data Transfer - Industry Standard
- 32x64 Pixels - LCD screen resolution
- Display Update < 1ms
- Window Dimensions - 20.6mm * 18.2mm²
- Viewing Area - 17.26mm * 12.78mm²
- LED Colours:  RGB



Specifications


- Operating Mode • SPST, Momentary
- Total Travel • 2mm
- Rating • 20mA, 5V DC
- Operation Life • 3,000,000 Cycles
- Operating Temperature Range • -10°C ~ +70°C
- Operating Force • 2.3 ± 0.4N

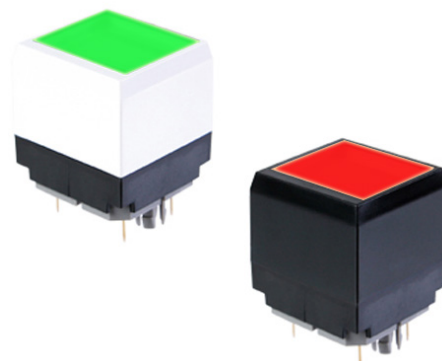


Please see switch pdf (link above) for full product specifications.

Q5-LED • SPST RGB LED Switch

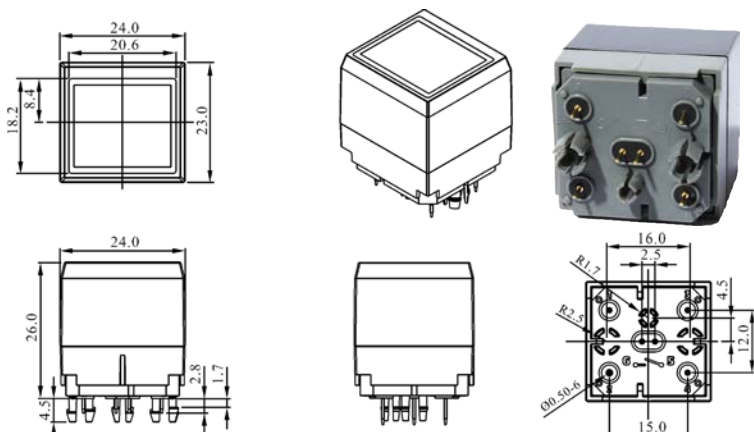
<http://files.rjselectronics.com/q5-led.pdf>

- The LED alternative to the Q5 LCD Switch
- SPST circuit
- Momentary switch
- RGB LED illumination
- Available as standard with Black square housing
- 24mm front face size
- LED Colours:  RGB



Specifications


- Operating Mode • SPST, Momentary
- Total Travel • 2mm
- Rating • 20mA, 5V DC
- Operation Life • 3,000,000 Cycles
- Operating Temperature Range • -10°C ~ +70°C
- Operating Force • 2.3 ± 0.4N

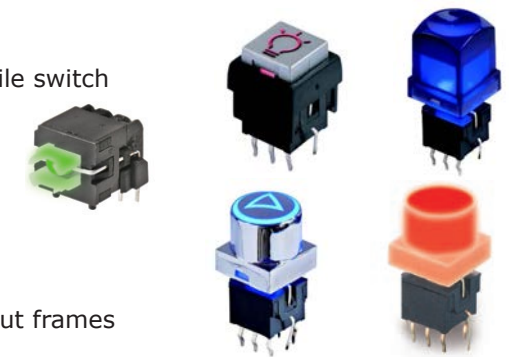


Please see switch pdf (link above) for full product specifications.

PB613 • DPDT LED Switch

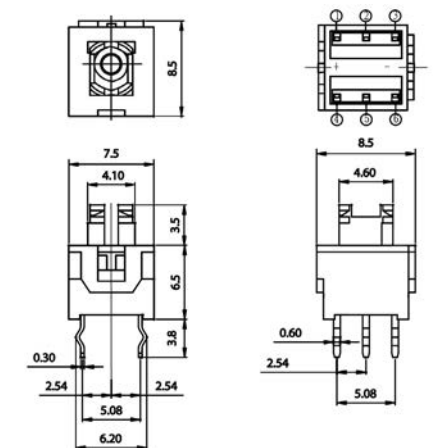
<http://files.rjselectronics.com/pb613.pdf>

- PCB vertical / right angle mounting style, LED illuminated tactile switch
- DPDT circuit
- Momentary or Latching Function
- Single or bi-colour LED illumination
- Available as standard with square or round caps
- Cap sizes range from 5mm to 10mm, available with and without frames
- LED Colours: 



Specifications


- Operating Mode • DPDT Momentary or Latching
- Total Travel • 1.5 ± 0.3mm (Momentary) / 1.0 ± 0.3mm (Latching)
- Rating • 0.1A 30V DC
- Operation Life • 10,000 Cycles Min
- Operating Temperature Range • -10°C ~ +80°C
- Operating Force • 150 ± 100gf (DPDT)



Please see switch pdf (link above) for full product specifications.

PB614 • SPST Tactile LED Switch

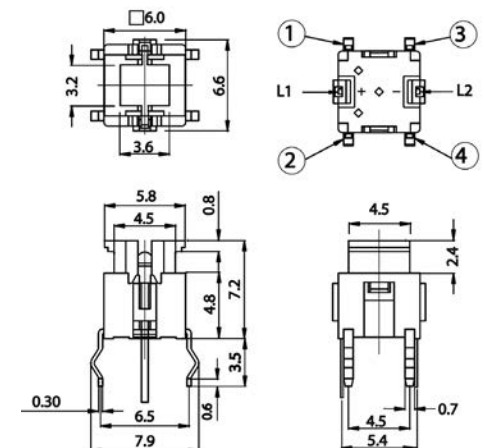
<http://files.rjselectronics.com/pb613.pdf>

- PCB or SMD mounting style, LED illuminated tactile switch
- SPST circuit
- Tactile feel
- Single or bi-colour LED illumination
- Available as standard with square or round caps
- Cap sizes range from 5mm to 10mm
- LED Colours: 



Specifications

- Operating Mode • SPST Tactile
- Total Travel • 0.25 ± 0.1mm
- Rating • 50mA, 12 VDC
- Operation Life • 300,000 Cycles Min
- Operating Temperature Range • -20°C ~ +70°C
- Operating Force • 160 ± 50gf (SPST)



Please see switch pdf (link above) for full product specifications.

PB615 • SPST Tactile LED Switch

<http://files.rjselectronics.com/pb615.pdf>

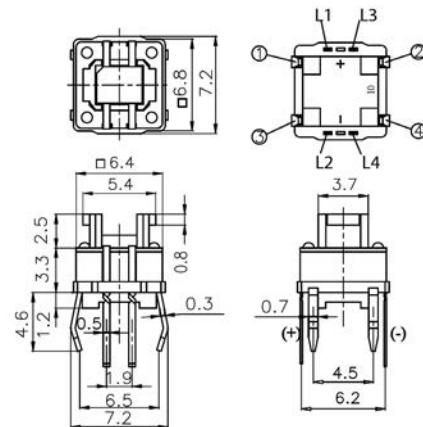
- PCB or SMD mounting style, LED illuminated tactile switch
- SPST circuit
- Tactile feel
- Single, bi-colour or RGB LED illumination
- Available with elliptical or round caps
- Two different cap sizes, 4.7mm round or 3.6mm x 7.5mm elliptical

LED Colours:     



Specifications

- Operating Mode • SPST, Tactile
- Total Travel • $0.25 \pm 0.1\text{mm}$
- Rating • 50mA, 12V DC
- Operation Life • 300,000 Cycles Min
- Operating Temperature Range • $-25^{\circ}\text{C} \sim +70^{\circ}\text{C}$
- Operating Force • $160 \pm 50\text{gf}$ (SPST)



Please see switch pdf (link above) for full product specifications.

PB617 / PB627 • SPST Tactile LED Switch

<http://files.rjselectronics.com/pb617-627.pdf>

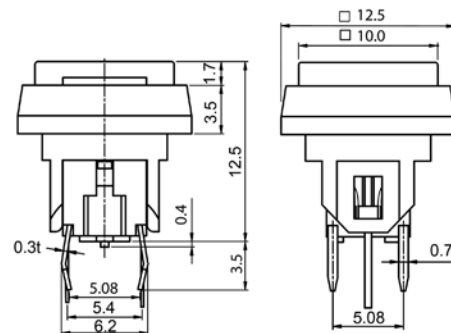
- PCB or SMD mounting style, LED illuminated tactile switch
- SPST circuit
- Linear or tactile function
- Single or bi-colour LED illumination
- Available as standard with square or round caps
- Two different cap sizes 7.5mm or 10mm, available with and without frames

LED Colours:     



Specifications (PB617 / PB627)

- Operating Mode • SPST, Linear / Tactile
- Total Travel • $0.25 \pm 0.1\text{mm}$ / $1.0 \pm 0.2\text{mm}$
- Rating • 50mA, 48VDC / 10mA, 12VDC
- Operation Life • 300,000 Cycles / 100,000 Cycles
- Operating Temperature Range • $-20^{\circ}\text{C} \sim +70^{\circ}\text{C}$
- Operating Force • $160 \pm 50\text{gf}$ / $100 \pm 40\text{gf}$



Please see switch pdf (link above) for full product specifications.

SPH • SPST LED Switch

<http://files.rjselectronics.com/sph.pdf>

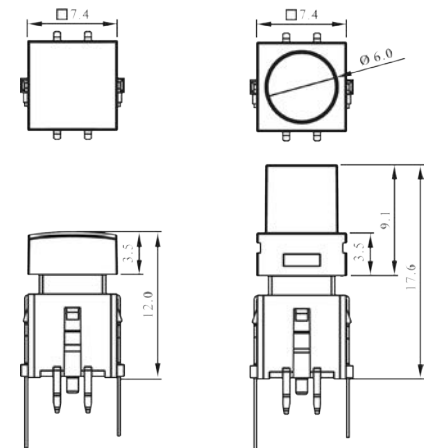
- PCB mounting style, LED illuminated switch
- SPST circuit
- Linear or tactile feel
- Single or bi-colour LED illumination
- Available as standard with square or round caps
- Cap sizes range from 6mm^2 to 8mm^2

LED Colours:     



Specifications

- Operating Mode • SPST, Tactile or Linear
- Total Travel • $0.3 \pm 0.1\text{mm}$ (Tactile) / $1.0 \pm 0.3\text{mm}$ (Linear)
- Rating • 50mA, 12VDC
- Operation Life • 1,000,000 Cycles
- Operating Temperature Range • $-10^{\circ}\text{C} \sim +60^{\circ}\text{C}$
- Operating Force • $230 \pm 50\text{gf}$ (Tactile) / $60 \pm 10\text{gf}$ (Linear)



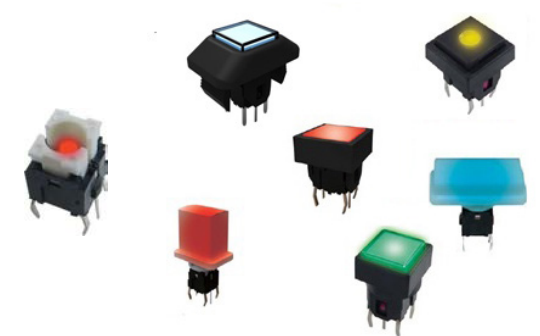
Please see switch pdf (link above) for full product specifications.

TC013 • SPST LED Tactile Switch

<http://files.rjselectronics.com/rjs-tc013.pdf>

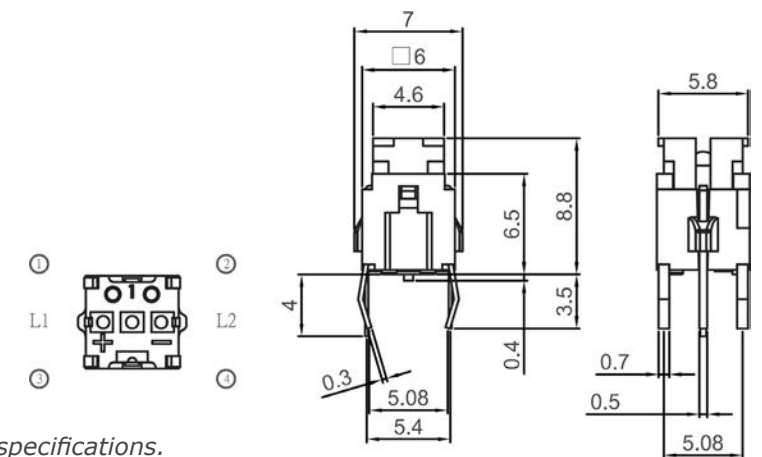
- PCB mounting style, LED illuminated tactile switch
- SPST circuit
- Tactile feel
- Single or bi-colour LED illumination
- Available as standard with a variety of cap shapes
- Cap sizes range from 7mm to 16.9mm x 7.9mm

LED Colours:     



Specifications






- Operating Mode • SPST, Tactile
- Total Travel • $0.2 \pm 0.1\text{mm}$
- Rating • 50mA, 12VDC
- Operation Life • 500,000 Cycles
- Operating Temperature Range • $-20^{\circ}\text{C} \sim +70^{\circ}\text{C}$
- Operating Force • $180 \pm 50\text{gf}$



Please see switch pdf (link above) for full product specifications.

SPA • SPST / DPDT LED Switch

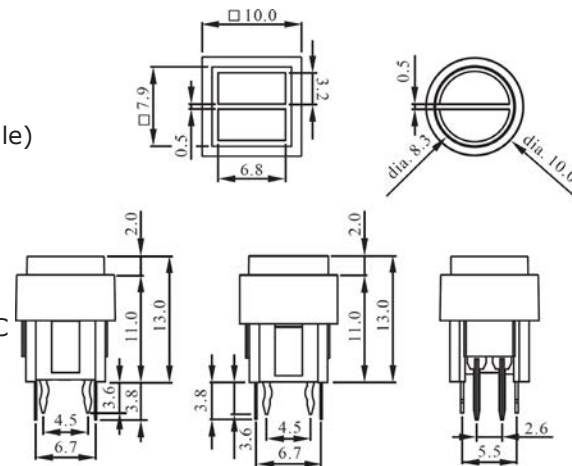
<http://files.rjselectronics.com/spa.pdf>

- PCB mounting style, full face, dot or split face LED illuminated Switch
 - SPST / DPDT circuit
 - Tactile, momentary or latching function
 - Single or bi-colour LED illumination
 - Available with square or round caps
 - 10mm² cap size
- LED Colours:     



Specifications






- Operating Mode • SPST, Tactile / DPDT, Momentary or Latching
- Total Travel • 2.5mm (Mom) 1.5mm (Latching) 0.3 ± 0.2mm (Tactile)
- Rating • 50mA, 12VDC 100mA, 30VDC
- Operation Life • 800,000 Cycles (SPST)
10,000 Cycles (DPDT)
- Operating Temperature Range • -10°C ~ +60°C -10°C ~ +65°C
- Operating Force • 180 ± 50gf (SPST) / 200 ± 80gf (DPDT)



Please see switch pdf (link above) for full product specifications.

KS01 • SPST Tactile LED Switch

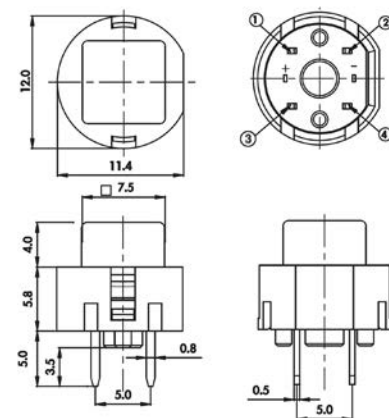
<http://files.rjselectronics.com/ks01.pdf>

- PCB mounting style, LED illuminated tactile switch
 - SPST circuit
 - Tactile feel
 - Single or bi-colour LED illumination
 - Available as standard with square or round caps
 - Cap sizes range from 7.5mm to 12mm
- LED Colours:     



Specifications







- Operating Mode • SPST, Tactile
- Total Travel • 1.0 ± 0.2mm
- Rating • 10mA, 35V DC
- Operation Life • 100,000 Cycles / 30,000 Cycles
- Operating Temperature Range • -20°C ~ +60°C
- Operating Force • 130 ± 50gf / 250 ± 50gf



Please see switch pdf (link above) for full product specifications.

TC011 • SPST LED Tactile Switch

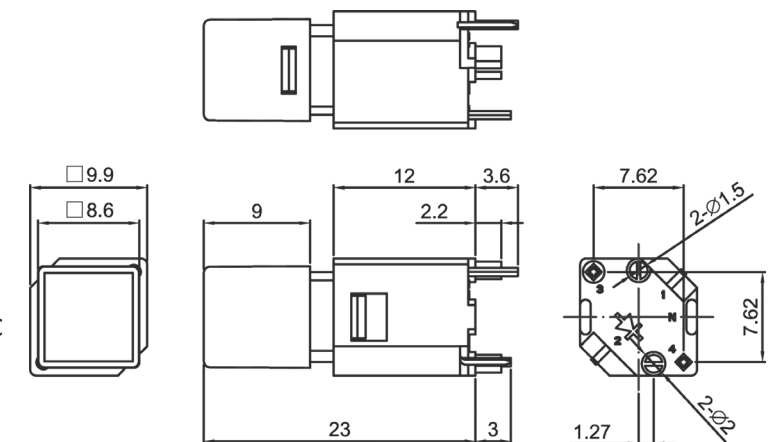
<http://files.rjselectronics.com/rjs-tc011.pdf>

- PCB mounting style, LED illuminated tactile switch
 - SPST circuit
 - Tactile feel
 - Single, bi-colour or RGB LED illumination
 - Available with a variety of cap shapes
 - Cap sizes range from 6mm to 11mm
- LED Colours:       RGB



Specifications






- Operating Mode • SPST, Tactile
- Total Travel • 1.3 ± 0.3mm
- Rating • 1mA, 5V DC Min.
1mA, 20V DC OR 5mA, 5V DC Max.
- Operation Life • 300,000 Cycles
- Operating Temperature Range • -20°C ~ +70°C
- Operating Force • 125 ± 35gf



Please see switch pdf (link above) for full product specifications.

KCN • PCB LED Switch

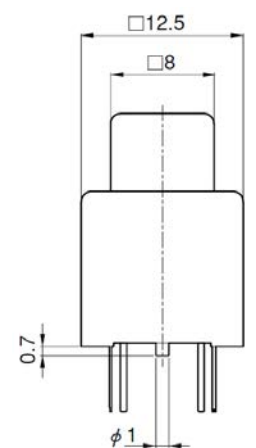
<http://files.rjselectronics.com/kcn.pdf>

- PCB mounting style, LED illuminated snap-action switch
 - SPST circuit
 - Momentary function
 - Available non-illuminated, single LED or dual LED illumination
 - LED full-face illumination available
 - 6mm, 8mm, 10mm or 12mm Square cap
- LED Colours:     



Specifications

- Operating Mode • SPST, Momentary
- Total Travel • 2.5mm
- Rating • 50mA, 24VDC
- Operation Life • 2,000,000 Cycles
- Operating Temperature Range • -15°C ~ 50°C
- Operating Force • 250gf



Please see switch pdf (link above) for full product specifications.

SPG1-2 • SPST RGB LED Broadcast Switch

<http://files.rjselectronics.com/spg1-2.pdf>

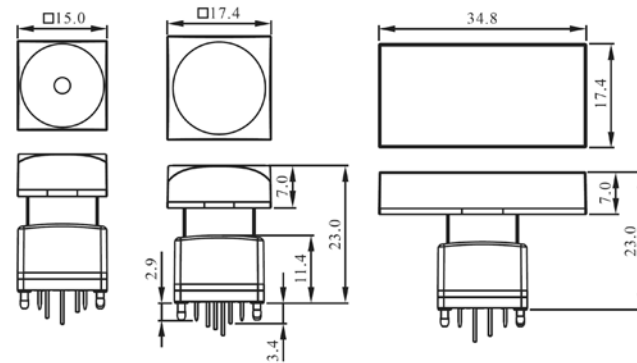
- PCB mounting style, LED illuminated switch
- SPST circuit
- Momentary function, soft or tactile feel
- Single, bi-colour or RGB LED illumination
- Available with flat, concave, convex or concave (spot) cap style
- Cap sizes range from 12mm square to 17.4mm x 34.8mm rectangle

LED Colours:       [RGB](#)



Specifications

- Operating Mode • SPST, Momentary
- Total Travel • 4.5mm (SPG1)
3.5mm (SPG2)
- Rating • 100mA, 12V DC
- Operation Life • 5,000,000 Cycles Min
- Operating Temperature Range • -25°C ~ +50°C
- Operating Force • 200gf



Please see switch pdf (link above) for full product specifications.

SPG3 • SPST RGB LED Broadcast Switch

<http://files.rjselectronics.com/spg3.pdf>

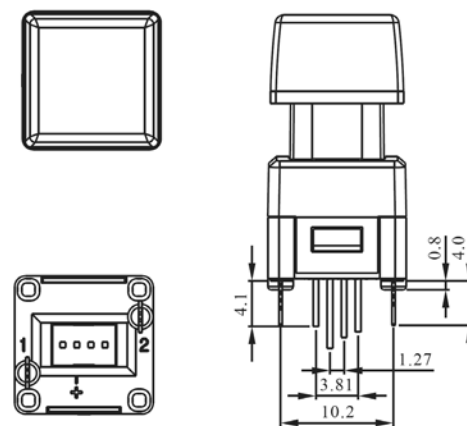
- PCB mounting style, quiet LED illuminated switch
- SPST circuit
- Momentary function
- Single, bi-colour or RGB LED illumination
- Flat, concave or convex switch cap
- 12mm Cap size

LED Colours:       [RGB](#)



Specifications

- Operating Mode • SPST, Momentary
- Total Travel • 4.5 ± 0.2mm
- Rating • 50mA, 48V DC Min
- Operation Life • 5,000,000 Cycles Min
- Operating Temperature Range • -25°C ~ +70°C
- Operating Force • 250 ± 50gf



Please see switch pdf (link above) for full product specifications.

SPG4 • SPST RGB LED Broadcast Switch

<http://files.rjselectronics.com/spg4.pdf>

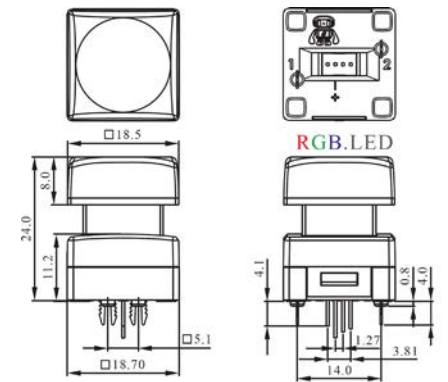
- PCB mounting style, LED illuminated switch
- SPST circuit
- Momentary function, tactile feel
- Single, bi-colour or RGB LED illumination
- Available with flat, concave, convex or concave (spot) cap style
- 18.5mm² Cap size

LED Colours:       [RGB](#)



Specifications

- Operating Mode • SPST, Momentary
- Total Travel • 4.5 ± 0.2mm
- Rating • 50mA, 48V DC Min
- Operation Life • 5,000,000 Cycles Min
- Operating Temperature Range • -25°C ~ +70°C
- Operating Force • 250 ± 50gf



Please see switch pdf (link above) for full product specifications.

SPG5 • SPST RGB LED Broadcast Switch

<http://files.rjselectronics.com/spg5.pdf>

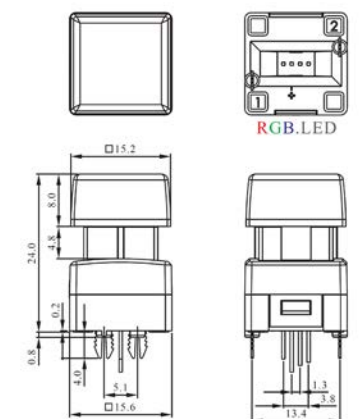
- PCB mounting style, quiet LED illuminated switch
- SPST circuit
- Momentary function
- Single, bi-colour or RGB LED illumination
- Flat, concave or convex switch cap
- 15.2mm² Cap size

LED Colours:       [RGB](#)



Specifications

- Operating Mode • SPST, Momentary
- Total Travel • 4.5 ± 0.2mm
- Rating • 50mA, 48V DC Min
- Operation Life • 5,000,000 Cycles Min
- Operating Temperature Range • -25°C ~ +70°C
- Operating Force • 250 ± 50gf



Please see switch pdf (link above) for full product specifications.

PS011A • SPST RGB LED Broadcast Switch

<http://files.rjselectronics.com/rjs-ps011a.pdf>

- PCB mounting style, LED illuminated switch
- SPST circuit
- Momentary function
- Single, bi-colour or RGB LED illumination
- Available as standard with concave square caps

• Cap sizes from 10mm to 17.4mm

LED Colours:       RGB



Specifications

Operating Mode • SPST, Momentary

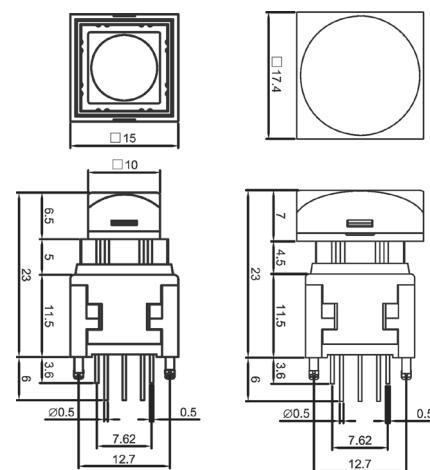
Total Travel • $4.5 \pm 0.2\text{mm}$

Rating • 100mA, 12VDC

Operation Life • 1,000,000 Cycles

Operating Temperature Range • $-20^{\circ}\text{C} \sim 70^{\circ}\text{C}$

Operating Force • $250 \pm 100\text{gf}$



Please see switch pdf (link above) for full product specifications.

KA • SMD RGB LED Switch

<http://files.rjselectronics.com/ka.pdf>

- SMD mounting style, LED illuminated LED switch
- SPDT / DPDT circuit
- Momentary or latching function
- Available non-illuminated, single, bi-colour or RGB LED illumination
- LED full-face, split-face, dual-colour, spot illumination available
- Cap sizes range from 12mm^2 to 17.4mm^2

LED Colours:       RGB



Specifications

Operating Mode • SPDT / DPDT, Momentary / Latching

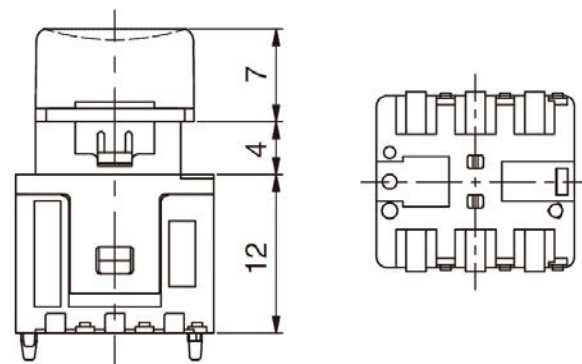
Total Travel • 4mm

Rating • 3A, 250VAC

Operation Life • 3,000,000 Cycles

Operating Temperature Range • $-15^{\circ}\text{C} \sim 50^{\circ}\text{C}$

Operating Force • 200gf



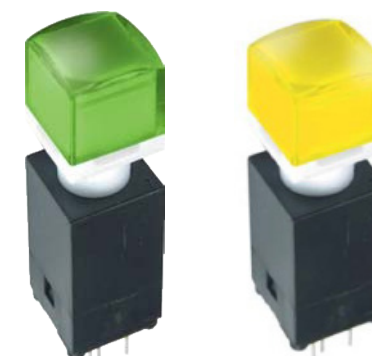
Please see switch pdf (link above) for full product specifications.

PS016 • SPST Quiet Reed Switch

<http://files.rjselectronics.com/rjs-ps016.pdf>

- PCB mounting style, quiet LED illuminated switch
- SPST circuit
- Momentary function
- Single, bi-colour or RGB LED illumination
- Square caps
- Cap sizes 12.2mm^2 or 14.6mm^2

LED Colours:       RGB



Specifications

Operating Mode • SPST, Momentary

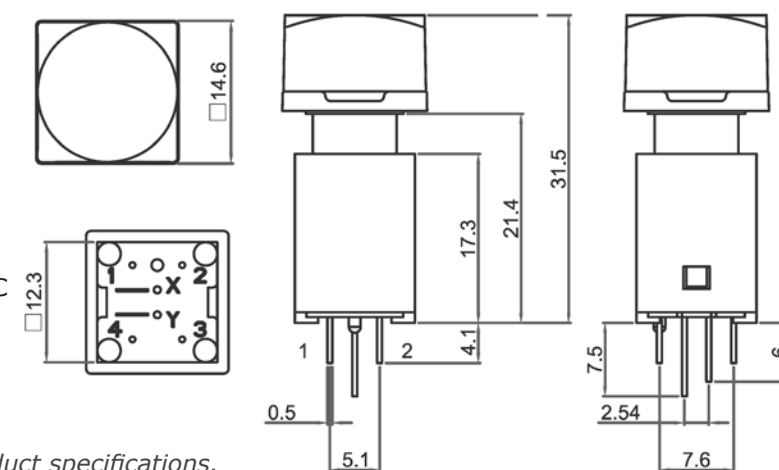
Total Travel • $2.7 \pm 0.7\text{mm}$

Rating • 100mA, 20V DC Max

Operation Life • 50,000,000 Cycles Min

Operating Temperature Range • $-5^{\circ}\text{C} \sim +60^{\circ}\text{C}$

Operating Force • $250 \pm 50\text{gf}$



Please see switch pdf (link above) for full product specifications.

SP86N • SPDT Rocker Switch

<http://files.rjselectronics.com/sp86.pdf>

- PCB mounting style, LED illuminated rocker switch
- SPDT circuit
- Momentary or latching function
- Up to 2 Large (3mm) LED's per switch
- Standard, wide, or double width caps available
- Three cap sizes, 12.4mm / 17.3mm / 35mm (Width) x 17.2mm (Length)

LED Colours:    



Specifications

Operating Mode • SPDT, Momentary / Latching

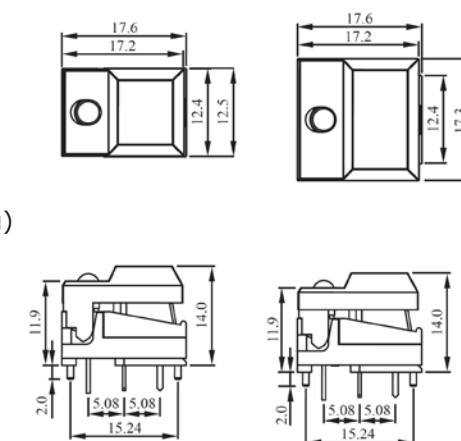
Total Travel • $2.5 \pm 0.5\text{mm}$

Rating • 12mA, 24VDC

Operation Life • 1,000,000 Cycles (Momentary) / 500,000 Cycles (Latching)

Operating Temperature Range • $-10^{\circ}\text{C} \sim 60^{\circ}\text{C}$

Operating Force • $170 \pm 50\text{gf}$



Please see switch pdf (link above) for full product specifications.

SPJ • SPST Right Angle LED Switch

<http://files.rjselectronics.com/spj.pdf>

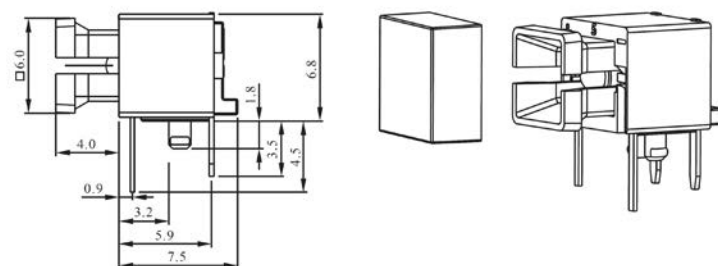
- PCB or SMD mounting style, right angle LED illuminated switch
- SPST circuit
- Tactile feel
- Single or bi-colour LED illumination
- Available with square or round caps
- Cap sizes range from 7.4mm² to 14mm²

LED Colours:     



Specifications

- Operating Mode • SPST, Momentary
- Total Travel • 0.3 ± 0.1mm
- Rating • 50mA, 12V DC Min
- Operation Life • 1,000,000 Cycles Min
- Operating Temperature Range • -10°C ~ +60°C
- Operating Force • 200 ± 50gf



Please see switch pdf (link above) for full product specifications.

LS • SPST / DPST Right Angle Switch

<http://files.rjselectronics.com/rjs-ls.pdf>

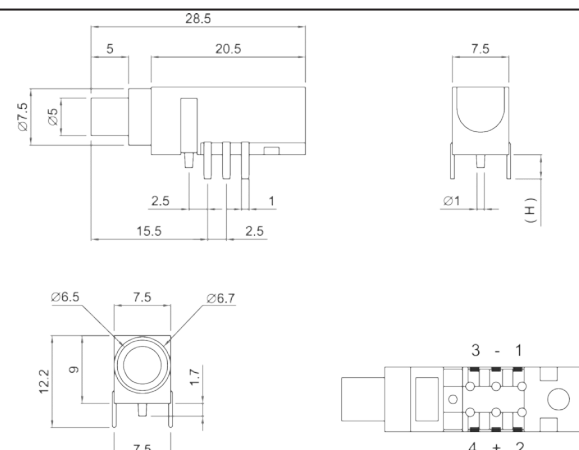
- PCB mounting style, LED illuminated right angle switch
- SPST / DPST circuit
- Momentary or latching function
- Single or bi-colour LED illumination
- Available with or without knob's
- Cap size without knob - 5mm, with knob - 9.4mm

LED Colours:    



Specifications

- Operating Mode • SPST, DPST
- Total Travel • 2.2 ± 0.3mm
- Rating • 0.2A, 36VDC
- Operation Life • 10,000 Cycles
- Operating Temperature Range • -20°C ~ +70°C
- Operating Force • 200 ± 100gf



Please see switch pdf (link above) for full product specifications.

MLS • SPST Right Angle Switch

<http://files.rjselectronics.com/rjs-mls.pdf>

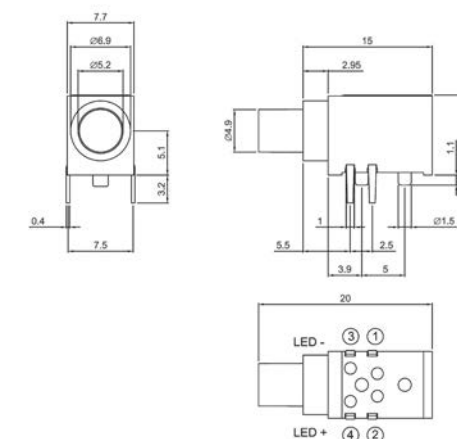
- PCB mounting style, LED illuminated right angle switch
- SPST circuit
- Momentary function
- Single or bi-colour LED illumination
- Available with or without knob's
- Cap size without knob - 5.2mm, with knob - 9.4mm

LED Colours:    



Specifications

- Operating Mode • SPDT, Momentary
- Total Travel • 2.4 ± 0.3mm
- Rating • 0.2A, 36V DC
- Operation Life • 10,000 Cycles
- Operating Temperature Range • -20°C ~ 70°C
- Operating Force • 300 ± 100gf



Please see switch pdf (link above) for full product specifications.

ML • DPDT / 4PDT Right Angle LED Switch

<http://files.rjselectronics.com/rjs-ml.pdf>

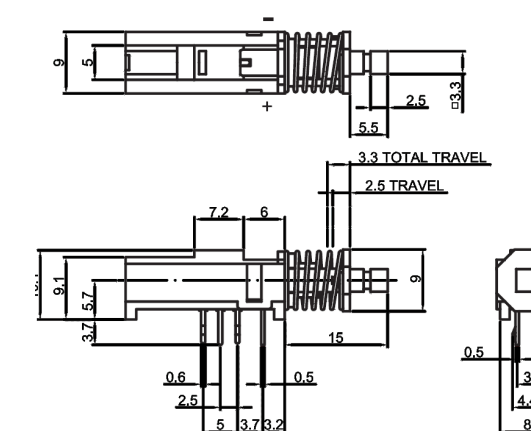
- PCB mounting style, LED illuminated right angle switch
- DPDT / 4PDT circuit
- Momentary or latching function
- Single or bi-colour LED illumination
- Available with or without knob's
- Cap size without knob - 5.2mm, with knob - 9.4mm

LED Colours:     



Specifications

- Operating Mode • DPDT / 4PDT, Momentary / Latching
- Total Travel • 2.5 ± 0.3mm (Mom) / 3.3 ± 0.3mm (Lat)
- Rating • 0.3A, 30VDC
- Operation Life • 10,000 Cycles
- Operating Temperature Range • -20°C ~ 70°C
- Operating Force • 200 ± 100gf

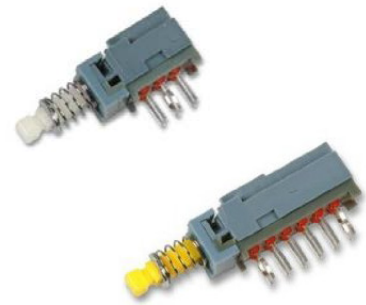


Please see switch pdf (link above) for full product specifications.

PS909 • DPDT / 4PDT / 6PDT Right Angle Switch

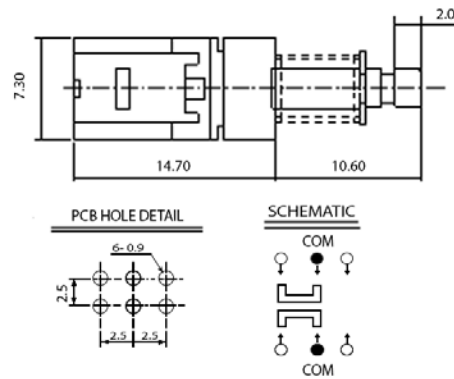
<http://files.rjselectronics.com/ps909.pdf>

- PCB mounting style, right angle LED illuminated switch
- DPDT, 4PDT or 6PDT circuit
- Momentary or latching function
- No LED illumination
- Available without caps as standard
- Button size (through panel) 2mm²



Specifications

- Operating Mode • DPDT / 4PDT / 6PDT, Momentary / Latching
- Total Travel • $3 \pm 0.1\text{mm}$
- Rating • 0.1A, 30VDC
- Operation Life • 30,000 Cycles
- Operating Temperature Range • $-20^{\circ}\text{C} \sim +70^{\circ}\text{C}$
- Operating Force • 2 Pole: $230 \pm 50\text{gf}$
 4 Pole: $280 \pm 50\text{gf}$
 6 Pole: $380 \pm 50\text{gf}$



Please see switch pdf (link above) for full product specifications.

Drawing shown is for DPDT type*

SPD5K • 5 Way LED Navigation Module

<http://files.rjselectronics.com/spd5k.pdf>

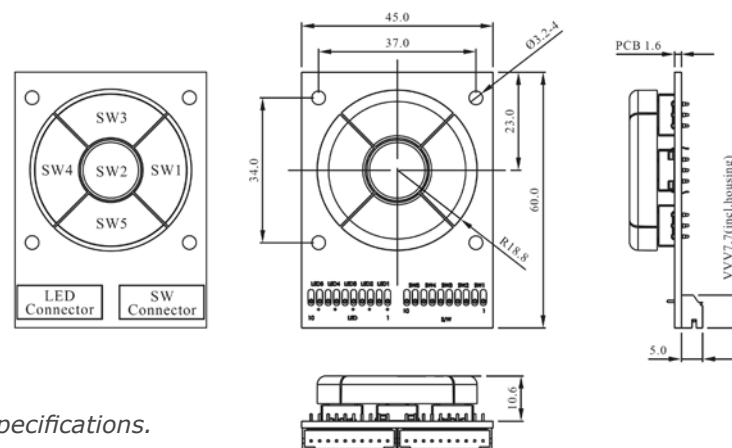
- PCB mounted, 5 way LED illuminated switch module
- 5PST circuit
- Tactile feel
- Non-illuminated, single or bi-colour LED illumination
- Available as standard with square or round caps
- Total size of navigation module through front panel (37mm)

LED Colours:



Specifications

- Operating Mode • SPST, Tactile (Per Switch)
- Total Travel • $0.3 \pm 0.1\text{mm}$
- Rating • 50mA, 12V DC Min
- Operation Life • 1,000,000 Cycles Min
- Operating Temperature Range • $-10^{\circ}\text{C} \sim +60^{\circ}\text{C}$
- Operating Force • $300 \pm 50\text{gf}$



Please see switch pdf (link above) for full product specifications.

SNA1 • Panel Mount Navigation Module

<http://files.rjselectronics.com/sna1.pdf>

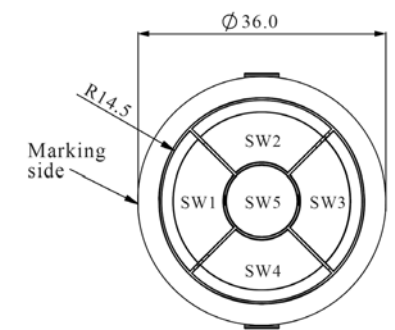
- Panel mounted, 5 way LED illuminated switch module
- 5PST circuit
- Tactile or linear Feel
- Non-illuminated or single LED illumination
- Available as standard with four navigation plus one center cap
- Total size of navigation module through front panel (36mm)

LED Colours:



Specifications

- Operating Mode • SPST, Tactile (Per Switch)
- Total Travel • $0.3 \pm 0.1\text{mm}$ (Tactile) / $1.0 \pm 0.3\text{mm}$ (Linear)
- Rating • 50mA, 12V DC Min
- Operation Life • 1,000,000 Cycles Min
- Operating Temperature Range • $-10^{\circ}\text{C} \sim +60^{\circ}\text{C}$
- Operating Force • $230 \pm 50\text{gf}$ (Tactile) / $60 \pm 10\text{gf}$ (Linear)



Please see switch pdf (link above) for full product specifications.

PS001 • SPST Small Panel Mount Switch

<http://files.rjselectronics.com/rjs-ps001.pdf>

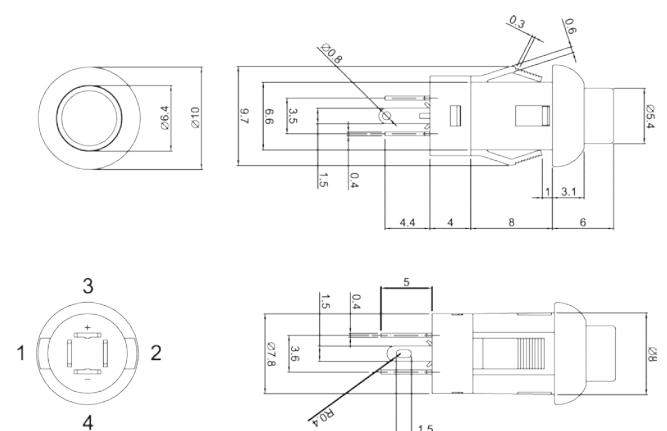
- Panel mounting style, quiet LED illuminated switch
- SPST circuit
- Momentary function
- Single or bi-colour LED illumination
- Round cap
- Cap sizes 5.4mm

LED Colours:



Specifications

- Operating Mode • SPST, Momentary
- Total Travel • $1.8 \pm 0.3\text{mm}$
- Rating • 100mA, 30V DC Min
- Operation Life • 50,000 Cycles Min
- Operating Temperature Range • $-40^{\circ}\text{C} \sim +85^{\circ}\text{C}$
- Operating Force • $250 \pm 100\text{gf}$



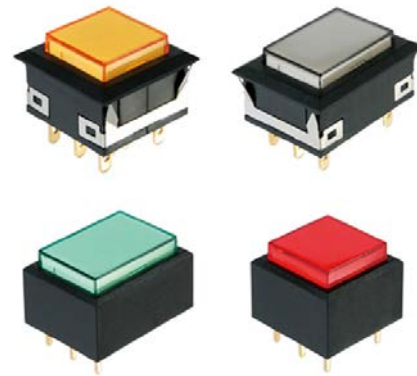
Please see switch pdf (link above) for full product specifications.

SPC • SPDT / DPDT RGB LED Switch

<http://files.rjselectronics.com/spc.pdf>

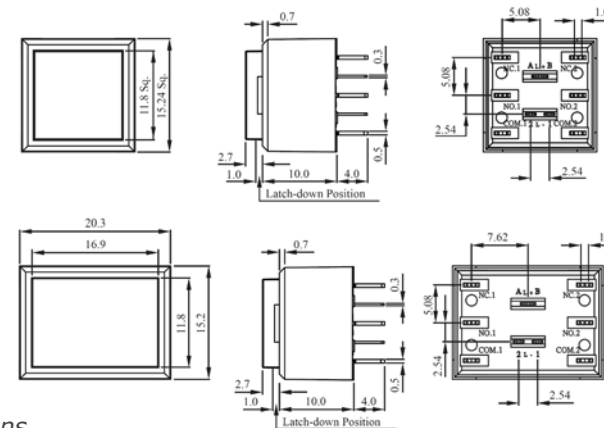
- PCB or panel mounting style, LED illuminated switch
- SPDT / DPDT circuit
- Momentary or latching function
- Single, bi-colour or RGB LED illumination
- Clear flat caps as standard
- Cap sizes range from 11.8mm² square to 11.8mm x 16.9mm rectangle

LED Colours:       RGB



Specifications

- Operating Mode • SPDT / DPDT, Momentary or Latching
- Total Travel • 2.3 ± 0.5mm
- Rating • 5A, 125V/250V AC or 5A 30V DC
- Operation Life • 1,000,000 Cycles (Momentary)
200,000 Cycles (Latching)
- Operating Temperature Range • -25°C ~ +50°C
- Operating Force • 190 ± 50gf (SPDT) / 200 ± 50gf (DPDT)



Please see switch pdf (link above) for full product specifications.

LP • SPST / DPST LED Switch

<http://files.rjselectronics.com/lp.pdf>

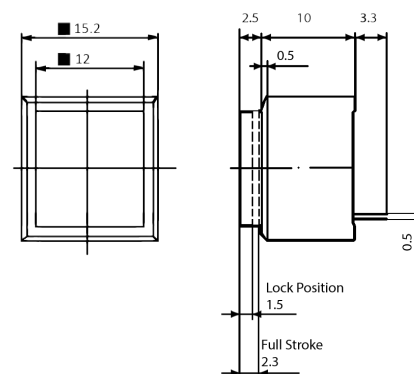
- PCB or panel mounting style, LED illuminated switch
- SPST / DPST circuit
- Momentary or latching function
- Single or bi-colour LED illumination
- Square or rectangle caps
- Cap sizes 12mm or 12mm x 15.6mm

LED Colours:     



Specifications

- Operating Mode • SPST / DPST, Momentary or latching
- Total Travel • 4.5 ± 0.2mm
- Rating • 3A, 250V AC Max / 3A 30V DC Max
- Operation Life • 200,000 Cycles Min
- Operating Temperature Range • -25°C ~ +70°C
- Operating Force • 150 ± 100gf SPST
220 ± 100gf DPST



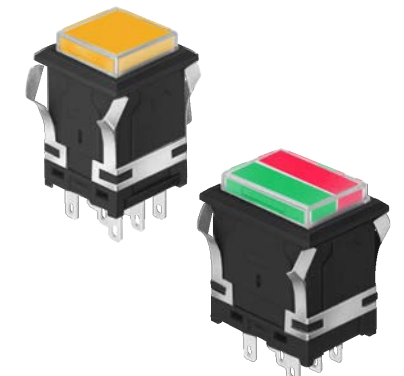
Please see switch pdf (link above) for full product specifications.

EH • Panel Mount LED Switch

<http://files.rjselectronics.com/eh.pdf>

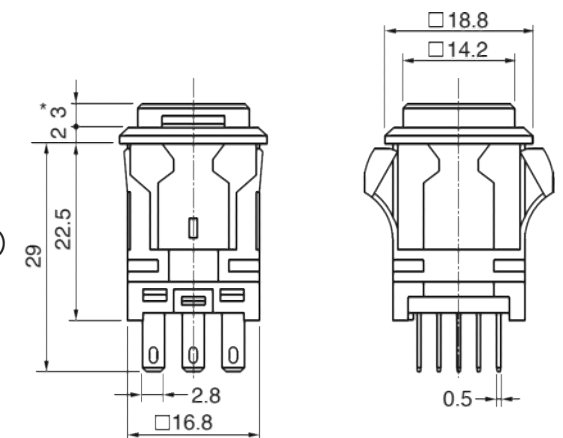
- Panel mounting style, LED illuminated snap-action switch
- SPDT / DPDT circuit
- Momentary or latching function
- Single or bi-colour LED illumination
- LED full-face, split-face, dual-colour, spot illumination available
- 14.2mm Square cap, or 14.2mm x 20.4mm for rectangular type

LED Colours:     



Specifications

- Operating Mode • SPDT / DPDT, Momentary / Latching
- Total Travel • 3mm
- Rating • 3A, 250VAC
- Operation Life • 2,000,000 Cycles (Mom) 200,000 Cycles (Latch)
- Operating Temperature Range • -15°C ~ 50°C
- Operating Force • 450gf



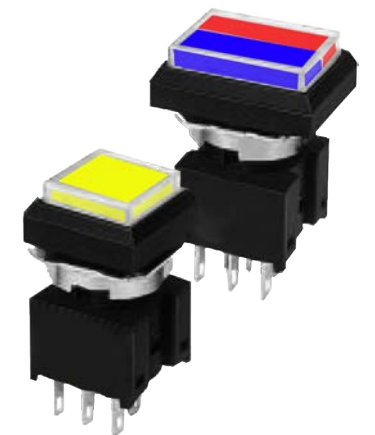
Please see switch pdf (link above) for full product specifications.

KH • Panel Mount LED Switch

<http://files.rjselectronics.com/kh.pdf>

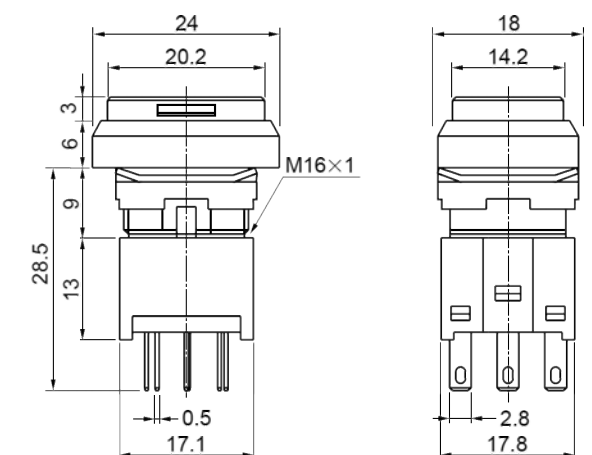
- Panel mounting style, LED illuminated snap-action switch
- SPDT / DPDT circuit
- Momentary or latching function
- Single or bi-colour LED illumination
- LED full-face, split-face, dual-colour, spot illumination available
- 14.2mm Square cap, or 14.2mm x 20.2mm for rectangular type

LED Colours:     



Specifications

- Operating Mode • SPDT / DPDT, Momentary / Latching
- Total Travel • 3mm
- Rating • 3A, 250VAC
- Operation Life • 2,000,000 Cycles (Mom) 200,000 Cycles (Latch)
- Operating Temperature Range • -15°C ~ 50°C
- Operating Force • 450gf



Please see switch pdf (link above) for full product specifications.

XH • SPDT / DPDT Panel Mount LED Switch

<http://files.rjselectronics.com/xh.pdf>

- Panel mounting style, LED illuminated snap-action switch
- SPDT / DPDT circuit
- Momentary or latching function
- Available non-illuminated, single LED or dual LED illumination
- LED full-face, split-face, dual-colour, spot illumination available
- 19mm Square cap, or 19mm x 26mm for rectangular type

LED Colours:     



Specifications

Operating Mode • SPDT / DPDT, Momentary / Latching

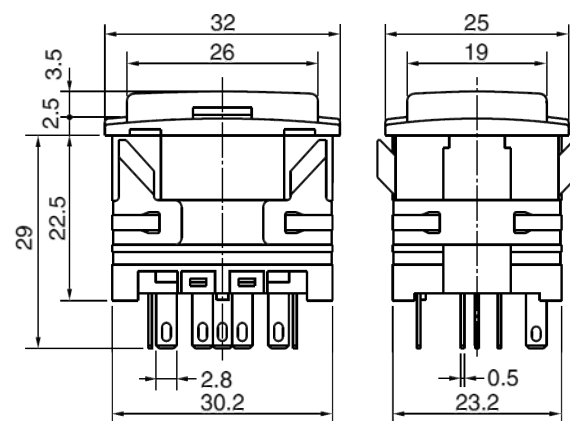
Total Travel • 3.5mm

Rating • 5A, 250VAC

Operation Life • 1,000,000 Cycles (Mom) 200,000 Cycles (Latch)

Operating Temperature Range • -15°C ~ 50°C

Operating Force • 500gf



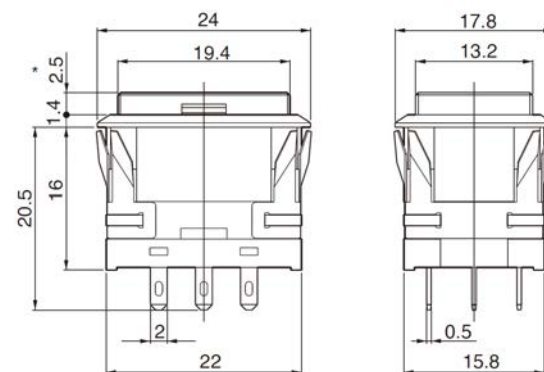
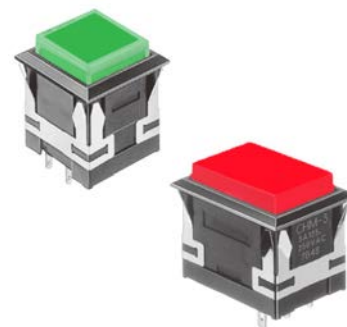
Please see switch pdf (link above) for full product specifications.

CH • SPDT / DPDT Panel Mount LED Switch

<http://files.rjselectronics.com/ch.pdf>

- Panel mounting style, LED illuminated snap-action switch
- SPDT / DPDT circuit
- Momentary or latching function
- Available non-illuminated, single LED or dual LED illumination
- LED full-face, split-face, dual-colour, spot illumination available
- 13.2mm Square cap, or 13.2mm x 19.4mm for rectangular type

LED Colours:     



Specifications

Operating Mode • SPDT / DPDT, Momentary / Latching

Total Travel • 2.5mm

Rating • 3A, 250VAC

Operation Life • 1,000,000 Cycles (Mom) 200,000 Cycles (Latch)

Operating Temperature Range • -15°C ~ 50°C

Operating Force • 450gf

Please see switch pdf (link above) for full product specifications.

TS001 • IP67 Capacitive Touch Switch

<http://files.rjselectronics.com/rjs-ts001.pdf>

- Panel mounting style, IP67 rated touch sensitive switch
- Capacitive touch switch
- Available with and without wire
- Single or bi-colour LED illumination
- Available as standard with square face
- Total size of switch through front panel (19.5mm)

LED Colours:     



Specifications

Operating Mode • One channel, Capacitive analog signal

Total Travel • 0.0mm

Rating • 5.5V DC Max

Operating Temperature Range • -20°C ~ +70°C

Operating Force • 0gf

IP Rating • IP67

Symbol	Parameter	Conditions	MIN.	TYP.	MAX.	Units
V _{CC}	Operating voltage		2.0	3.0	5.5	V
F	System oscillator	V _{CC} = 3V		16		KHz
F _{SEN}	Sensor oscillator	V _{CC} =3V, Output no load		1M		Hz
V _{IH}	Input ports	V _{CC} =3V, Output no load		1.5	3.0	uA
V _{IL}	Input ports	Input low voltage	0		0.2	V
I _{OP}	Operating current	Input high voltage	0.8		1.0	V
I _{OL}	Output port sink current	V _{CC} =3V, VOL=0.6V		8		mA
I _{OH}	Output port source current	V _{CC} =3V, VOH=2.4V		-4		mA
T _R	Output response time	V _{CC} =3V			220	mS
R _{PH}	Input pin pull-high resistor	V _{CC} =3V		35K		Ω
R _{PL}	Input pin pull-low resistor	V _{CC} =3V		28K		Ω

Please see switch pdf (link above) for full product specifications.

TS003 • IP67 Capacitive Touch Switch

<http://files.rjselectronics.com/rjs-ts003.pdf>

- Panel mounting style, IP67 rated touch sensitive switch
- Available with and without cable
- Available with and without vibration motor
- Single, bi-colour or RGB LED illumination
- Available as standard with round cap
- Total size of switch through front panel (25mm)

LED Colours:       RGB



Specifications

Operating Mode • One channel, Capacitive analog signal

Total Travel • 0.0mm

Rating • 5.5V DC Max

Operating Temperature Range • -20°C ~ +70°C

Operating Force • 0gf

IP Rating • IP67

Symbol	Parameter	Conditions	MIN.	TYP.	MAX.	Units
V _{CC}	Operating voltage		2.0	3.0	5.5	V
F	System oscillator	V _{CC} = 3V		16		KHz
F _{SEN}	Sensor oscillator	V _{CC} =3V, Output no load		1M		Hz
I _{OP}	Input ports	V _{CC} =3V, Output no load		1.5	3.0	uA
V _{IL}	Input ports	Input low voltage	0		0.2	V
I _{IH}	Operating current	Input high voltage	0.8		1.0	V
I _{OL}	Output port sink current	V _{CC} =3V, VOL=0.6V		8		mA
I _{OH}	Output port source current	V _{CC} =3V, VOH=2.4V		-4		mA
T _R	Output response time	V _{CC} =3V			220	mS
R _{PH}	Input pin pull-high resistor	V _{CC} =3V		35K		Ω
R _{PL}	Input pin pull-low resistor	V _{CC} =3V		28K		Ω

Please see switch pdf (link above) for full product specifications.

PAS • 12mm IP67 Switch

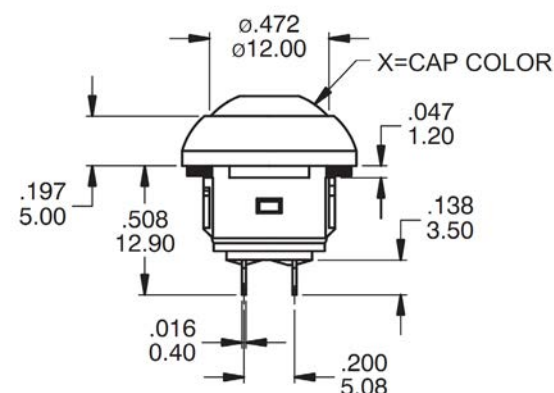
<http://files.rjselectronics.com/pas.pdf>

- Snap-in or panel mounting style, 12mm IP67 switch
- SPST circuit
- Momentary or latching function
- Single colour DOT LED illumination
- Available as standard with square or round cap face
- 12mm panel cut-out
- IP67 Rated Protection

LED Colours:     

**Specifications**

- IP Rating • IP67
- Operating Mode • SPST, Momentary or Latching
- Total Travel • 1.5mm (Momentary) 2.5mm (Latching)
- Rating • 200mA 250V AC
- Operation Life • 1,000,000 Cycles
- Operating Temperature Range • -40°C ~ 85°C
- Operating Force • approx 2 ~ 5N (350 ± 150gf)



Please see switch pdf (link above) for full product specifications.

RJSGQ12 • 12mm IP65 Metal Switch

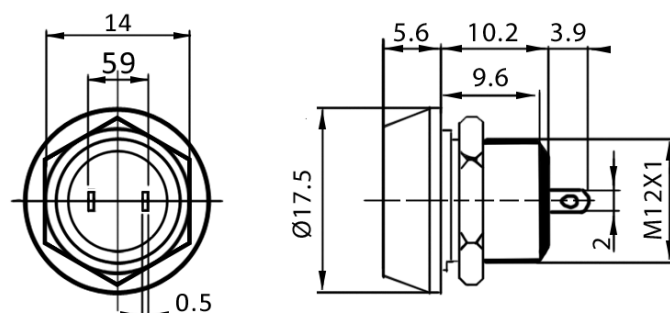
<http://files.rjselectronics.com/rjsgq12.pdf>

- Panel mounting style, 12mm IP65 switch
- SPNO circuit, Screw or tag terminals
- Momentary function
- No LED illumination
- Available as Flat, Round (ballhead), or Raised (Highhead)
- 12mm panel cut-out
- IP65 Rated protection

Finish: Stainless Steel (304), Nickel Plated

**Specifications**

- IP Rating • IP65
- Operating Mode • SPNO, Momentary
- Total Travel • 2.0mm
- Rating • 2A, 36VDC
- Operation Life • 500,000 Cycles
- Operating Temperature Range • -20°C ~ +55°C
- Operating Force • Approx. 5N (500gf)



Please see switch pdf (link above) for full product specifications.

RJS101-12L • 12mm IP67 Switch

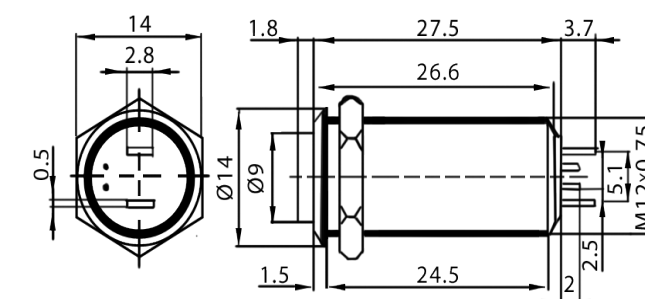
<http://files.rjselectronics.com/rjs101-12l.pdf>

- Snap-in or panel mounting style, 12mm IP67 switch
- SPNO circuit
- Momentary or latching function
- Single or bi-colour LED illumination
- Non-illuminated, Dot LED or Ring LED illumination
- Available as Flat or Raised (Highhead)
- 12mm panel cut-out
- IP67 Rated protection

LED Colours:     

**Specifications**

- IP Rating • IP67
- Operating Mode • SPNO, Momentary or Latching
- Total Travel • 1.5mm (Momentary) 2.5mm (Latching)
- Rating • 2A, 36VDC
- Operation Life • 500,000 Cycles
- Operating Temperature Range • -20°C ~ +55°C
- Operating Force • Approx. 5N (500gf)



Please see switch pdf (link above) for full product specifications.

RJSGQ16 • 16mm IP65 / IP67 Metal Switch

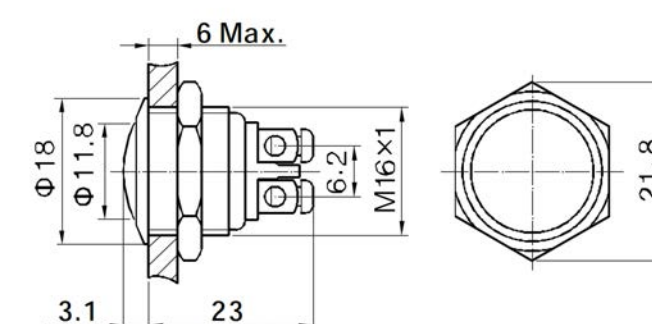
<http://files.rjselectronics.com/rjsgq16.pdf>

- Panel mounting style, 16mm IP65 switch
- SPNO circuit, Screw or tag terminals
- Momentary function
- No LED illumination
- Available as Flat, Round (ballhead), or Raised (Highhead)
- 16mm panel cut-out
- IP65 / IP67 Rated protection

Finish: Stainless Steel (304), Nickel Plated

**Specifications**

- IP Rating • IP65 / IP67
- Operating Mode • SPNO, Momentary
- Total Travel • 1.5mm
- Rating • 2A, 36VDC
- Operation Life • 1,000,000 Cycles
- Operating Temperature Range • -20°C ~ +55°C
- Operating Force • Approx. 4N (500gf)



Please see switch pdf (link above) for full product specifications.

RJS101-16L • 16mm IP65 Switch

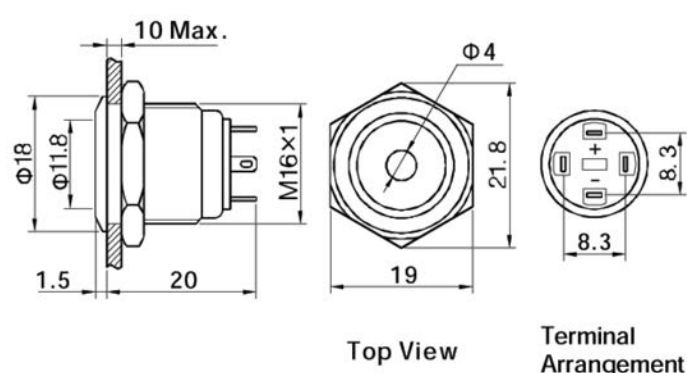
<http://files.rjselectronics.com/rjs101-16l.pdf>

- Panel mounting style, 16mm IP65 switch
- SPNO circuit • Momentary function • Tag terminals
- Single or bi-colour LED illumination
- Non-illuminated, Dot LED, Ring LED or POWER illumination
- Available as Flat or Raised (Highhead)
- 16mm panel cut-out
- IP65 Rated protection

LED Colours:      Finish: BLACK (Anodised Aluminium), Stainless Steel (304), Nickel Plated

**Specifications**

- IP Rating • IP65
- Operating Mode • SPNO, Momentary
- Total Travel • 1.5mm (Momentary) 2.5mm (Latching)
- Rating • 2A, 36VDC
- Operation Life • 1,000,000 Cycles
- Operating Temperature Range • -20°C ~ +55°C
- Operating Force • Approx. 4N (400gf)



Please see switch pdf (link above) for full product specifications.

RJSX02-16 • 16mm IP67 Metal Switch

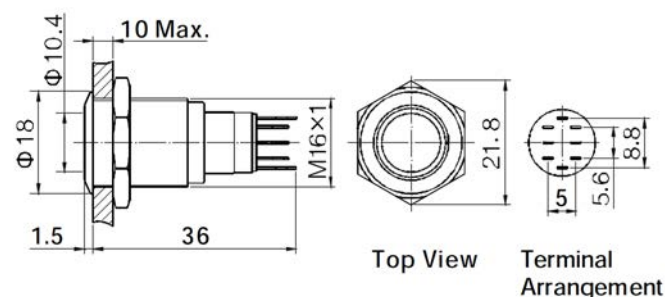
<http://files.rjselectronics.com/rjsx02-16.pdf>

- Panel mounting style, 16mm IP67 switch
- SPDT / DPDT circuit • Momentary or latching function • Tag terminals
- Single or bi-colour LED illumination
- Non-illuminated, Dot LED, Ring LED or POWER illumination
- Available as Flat or Raised (Highhead)
- 16mm panel cut-out
- IP67 Rated protection

LED Colours:      Finish: BLACK (Anodised Aluminium), Stainless Steel (304), Nickel Plated

**Specifications**

- IP Rating • IP67
- Operating Mode • SPDT or DPDT, Momentary or Latching
- Total Travel • 1.5mm (Momentary) 2.5mm (Latching)
- Rating • 2A, 36VDC
- Operation Life • 1,000,000 Cycles
- Operating Temperature Range • -20°C ~ +55°C
- Operating Force • Approx. 4N (400gf)



Please see switch pdf (link above) for full product specifications.

RJSGQ19 • 19mm IP67 Switch

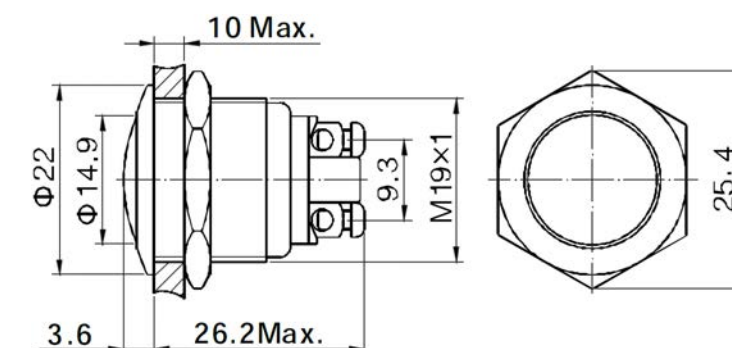
<http://files.rjselectronics.com/rjsgq19.pdf>

- Panel mounting style, 19mm IP65 / IP67 switch
- SPNO circuit, Screw or tag terminals
- Momentary function
- No LED illumination
- Available as Flat, Round (ballhead), or Raised (Highhead)
- 19mm panel cut-out
- IP65 / IP67 Rated protection

Finish: BLACK (Anodised Aluminium), Stainless Steel (304), Nickel Plated

**Specifications**

- IP Rating • IP65 / IP67
- Operating Mode • SPNO, Momentary
- Total Travel • 1.5mm
- Rating • 2A, 36VDC
- Operation Life • 1,000,000 Cycles
- Operating Temperature Range • -20°C ~ +55°C
- Operating Force • Approx. 4N (400gf)



Please see switch pdf (link above) for full product specifications.

RJSHQ19 • 19mm IP68 SS316 Switch

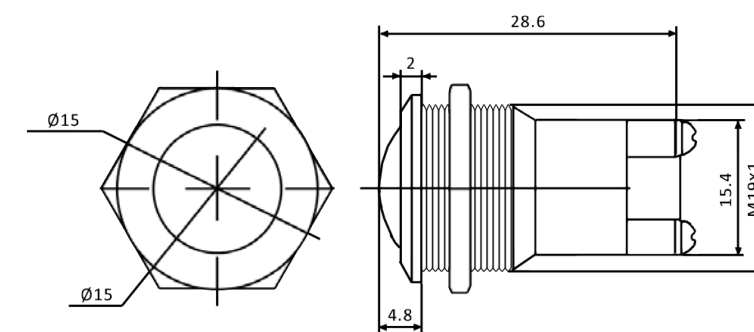
<http://files.rjselectronics.com/rjshq19.pdf>

- Panel mounting style, 19mm IP68 switch
- SPNO circuit, Screw or tag terminals
- Momentary function
- No LED illumination
- Available as Flat, Round (ballhead), or Raised (Highhead)
- 19mm panel cut-out
- IP68 Rated protection

Finish: Stainless Steel (316)

**Specifications**

- IP Rating • IP68
- Operating Mode • SPNO, Momentary
- Total Travel • 1.8mm
- Rating • 5A, 250VAC
- Operation Life • 1,000,000 Cycles
- Operating Temperature Range • -25°C ~ +55°C
- Operating Force • Approx. 4N (400gf)



Please see switch pdf (link above) for full product specifications.

RJS101-19L • 19mm IP65 Switch

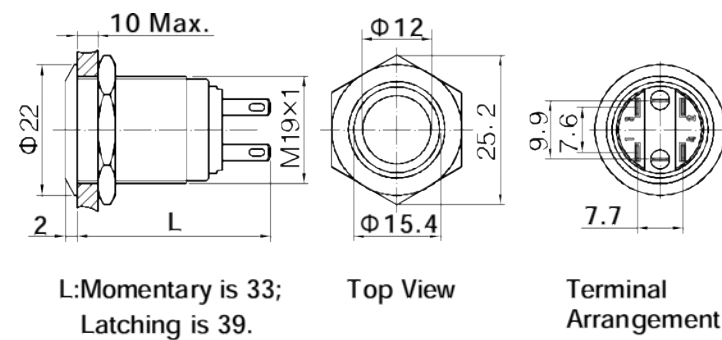
<http://files.rjselectronics.com/rjs101-19l.pdf>

- Panel mounting style, 19mm IP65 switch
- SPDT circuit • Momentary or latching function • Tag terminals
- Single or bi-colour LED illumination
- Non-illuminated, Dot LED, Ring LED or POWER illumination
- Available as Flat or Raised (Highhead)
- 19mm panel cut-out
- IP65 / IP67 Rated protection

LED Colours:      Finish: BLACK (Anodised Aluminium), Stainless Steel (304)

**Specifications**

IP Rating • IP65 / IP67
 Operating Mode • SPDT, Momentary or Latching
 Total Travel • 1.5mm
 Rating • 5A, 250VAC
 Operation Life • 1,000,000 Cycles
 Operating Temperature Range • -20°C ~ +55°C
 Operating Force • Approx. 4N (400gf)



Please see switch pdf (link above) for full product specifications.

RJSX02-19 • 19mm IP67 Metal Switch

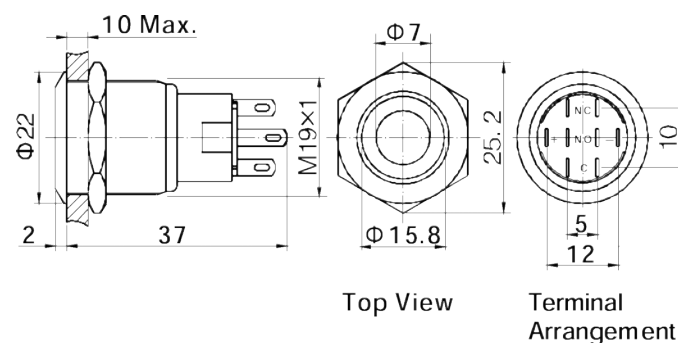
<http://files.rjselectronics.com/rjsx02-19.pdf>

- Panel mounting style, 19mm IP67 switch
- SPDT / DPDT circuit • Momentary or latching function • Tag terminals
- Single or bi-colour LED illumination
- Non-illuminated, Dot LED, Ring LED or POWER illumination
- Available as Flat or Raised (Highhead)
- 19mm panel cut-out
- IP67 Rated protection

LED Colours:      Finish: BLACK (Anodised Aluminium), Stainless Steel (304)

**Specifications**

IP Rating • IP67
 Operating Mode • SPDT or DPDT, Momentary or Latching
 Total Travel • 1.5mm (Momentary) 2.5mm (Latching)
 Rating • 5A, 250VAC
 Operation Life • 1,000,000 Cycles
 Operating Temperature Range • -20°C ~ +55°C
 Operating Force • Approx. 4N (400gf)



Please see switch pdf (link above) for full product specifications.

RJS101-19ML • 19mm Micro Travel IP65 Switch

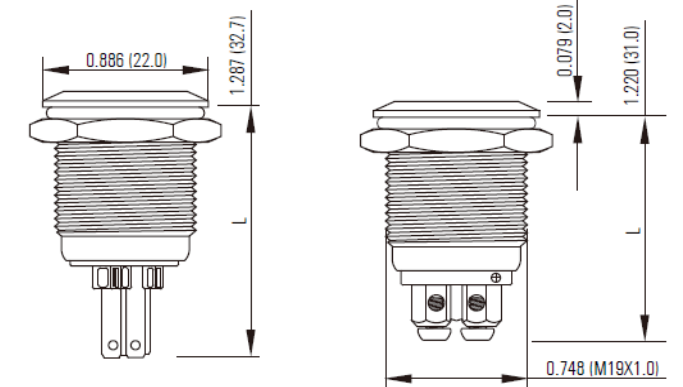
<http://files.rjselectronics.com/rjs101-19ls.pdf>

- Panel mounting style, 19mm IP65 switch
- SPDT circuit • Momentary Micro travel (0.5mm) • Screw or tag terminals
- Single or bi-colour LED illumination
- Non-illuminated, Dot LED or Ring LED illumination
- Available as Flat head only
- 19mm panel cut-out
- IP65 Rated protection

LED Colours:      Finish: BLACK (Anodised Aluminium), Stainless Steel (304)

**Specifications**

IP Rating • IP65
 Operating Mode • SPNO, Momentary
 Total Travel • 0.5mm
 Rating • 5A, 250VAC
 Operation Life • 500,000 Cycles
 Operating Temperature Range • -20°C ~ +55°C
 Operating Force • Approx. 4N (400gf)



Please see switch pdf (link above) for full product specifications.

RJS101-19SL • 19mm Short IP67 Metal Switch

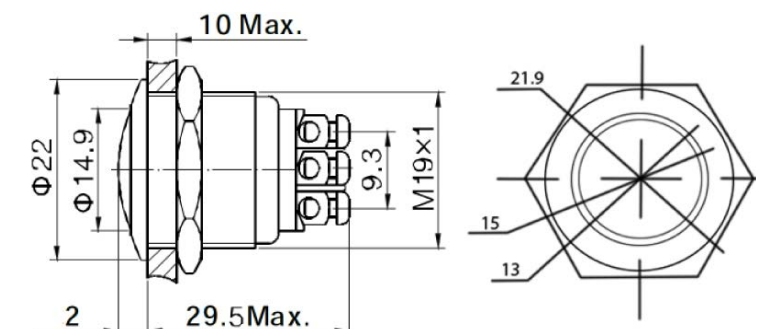
<http://files.rjselectronics.com/rjs101-19sl.pdf>

- Panel mounting style, 19mm IP67 switch
- SPNO circuit • Momentary function • Screw terminals
- Single or bi-colour LED illumination
- Ring LED illumination
- Available as Flat, Round (ballhead), or Raised (Highhead)
- 19mm panel cut-out
- IP67 Rated protection

LED Colours:      Finish: BLACK (Anodised Aluminium), Stainless Steel (316)

**Specifications**

IP Rating • IP67
 Operating Mode • SPNO, Momentary
 Total Travel • 1.5mm
 Rating • 2A, 36VDC
 Operation Life • 1,000,000 Cycles
 Operating Temperature Range • -20°C ~ +55°C
 Operating Force • Approx. 4N (400gf)



Please see switch pdf (link above) for full product specifications.

RJS101-22 • 22mm Short IP65 Metal Switch

<http://files.rjselectronics.com/rjs101-22.pdf>

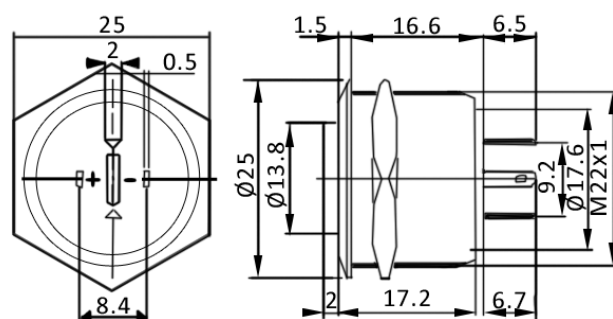
- Panel mounting style, 22mm IP65 switch
- SPNO circuit • Momentary function • Tag terminals
- Single or bi-colour LED illumination
- Non-illuminated, Dot LED, Ring LED or POWER illumination
- Available as Flat or Raised (Highhead)
- 22mm panel cut-out, short depth behind panel (23.3 incl terminals)
- IP65 Rated protection

LED Colours:      Finish: BLACK (Anodised Aluminium), Stainless Steel (304)



Specifications

- IP Rating • IP65
- Operating Mode • SPNO, Momentary
- Total Travel • 2.5mm
- Rating • 5A, 250VAC
- Operation Life • 500,000 Cycles
- Operating Temperature Range • -20°C ~ +55°C
- Operating Force • Approx. 4N (400gf)



Please see switch pdf (link above) for full product specifications.

RJS102-22M • 22mm IP67 Flame LED Metal Switch

<http://files.rjselectronics.com/rjs102-22m.pdf>

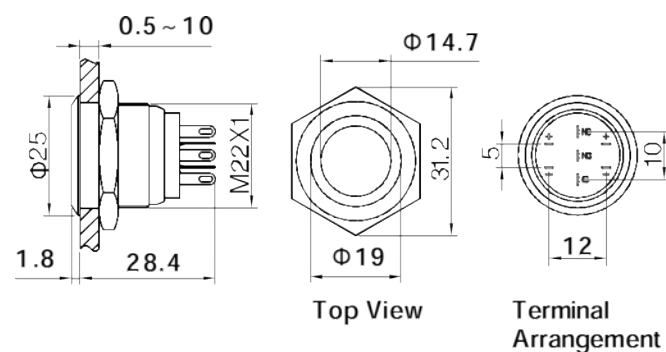
- Panel mounting style, 22mm IP67 switch
- SPDT circuit • Micro travel (0.5mm) • Tag terminals
- Dual-Colour LED (one LED at the Top, one LED at the Bottom, creates flame effect)
- Flame Ring LED illumination
- Available as Flat head
- 22mm panel cut-out
- IP65 Rated protection

LED Colours:      Finish: Stainless Steel (304)



Specifications

- IP Rating • IP67
- Operating Mode • SPDT, Momentary - Micro Travel
- Total Travel • 0.5mm
- Rating • 5A, 250VAC
- Operation Life • 500,000 Cycles
- Operating Temperature Range • -20°C ~ +55°C
- Operating Force • Approx. 4N (400gf)



Please see switch pdf (link above) for full product specifications.

RJS103-22 • 22mm IP65 / IP67 Metal Switch

<http://files.rjselectronics.com/rjs103-22.pdf>

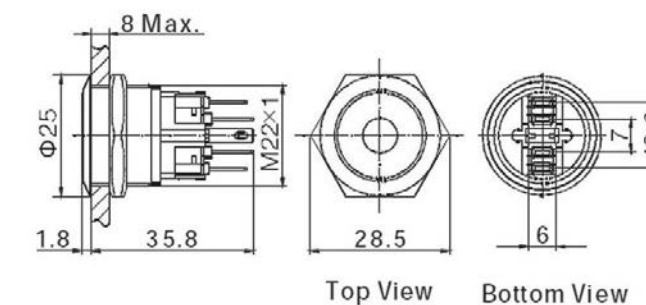
- Panel mounting style, 22mm IP65 / IP67 switch
- SPDT circuit • Momentary or latching function • Tag terminals
- Single or bi-colour LED illumination
- Non-illuminated, Dot LED, Ring LED or POWER illumination
- Available as Flat head only
- 22mm panel cut-out
- IP65 / IP67 Rated protection

LED Colours:      Finish: BLACK (Anodised Aluminium), Stainless Steel (304)



Specifications

- IP Rating • IP65 / IP67
- Operating Mode • SPDT, Momentary or Latching
- Total Travel • 1.5mm
- Rating • 5A, 250V AC
- Operation Life • 500,000 Cycles
- Operating Temperature Range • -20°C ~ +55°C
- Operating Force • Approx. 4N (400gf)



Please see switch pdf (link above) for full product specifications.

RJSX03-25 • 25mm IP65 / IP67 Metal Switch

<http://files.rjselectronics.com/rjsx03-25.pdf>

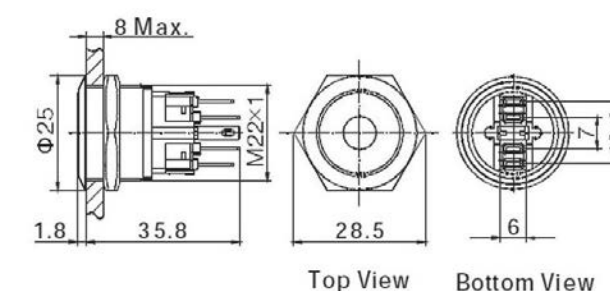
- Panel mounting style, 25mm IP65 / IP67 switch
- SPDT or DPDT circuit • Momentary or latching function • Tag terminals
- Single or bi-colour LED illumination
- Non-illuminated, Dot LED, Ring LED or POWER illumination
- Available as Flat head only
- 25mm panel cut-out
- IP65 / IP67 Rated protection

LED Colours:      Finish: BLACK (Anodised Aluminium), Stainless Steel (304)



Specifications

- IP Rating • IP65 / IP67
- Operating Mode • SPDT, Momentary or Latching
- Total Travel • 1.5mm
- Rating • 5A, 250V AC
- Operation Life • 500,000 Cycles
- Operating Temperature Range • -20°C ~ +55°C
- Operating Force • Approx. 4N (400gf)

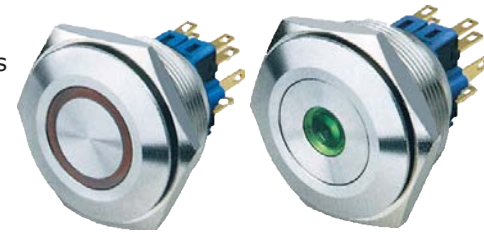


Please see switch pdf (link above) for full product specifications.

RJSX03-28 • 28mm IP65 / IP67 Metal Switch

<http://files.rjselectronics.com/rjsX03-28.pdf>

- Panel mounting style, 28mm IP65 / IP67 switch
- SPDT or DPDT circuit • Momentary or latching function • Tag terminals
- Single or bi-colour LED illumination
- Non-illuminated, Dot LED, Ring LED or POWER illumination
- Available as Flat or Concave
- 28mm panel cut-out
- IP65 / IP67 Rated protection



LED Colours:      Finish: BLACK (Anodised Aluminium), Stainless Steel (304)

Specifications

IP Rating • IP65 / IP67

Operating Mode • SPDT, Momentary or Latching

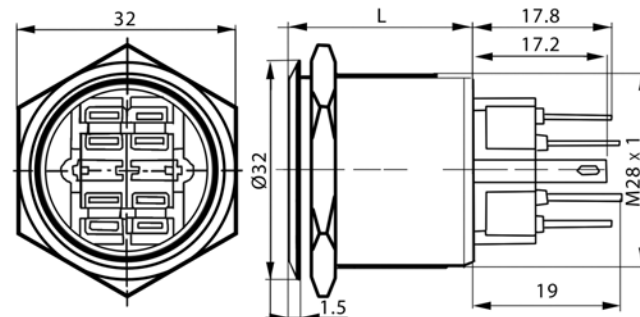
Total Travel • 1.5mm

Rating • 5A, 250V AC

Operation Life • 500,000 Cycles

Operating Temperature Range • -20°C ~ +55°C

Operating Force • Approx. 4N (400gf)



L: MOMENTARY 22
LATCHING 23.8

Please see switch pdf (link above) for full product specifications.

RJSX03-30 • 30mm IP65 / IP67 Metal Switch

<http://files.rjselectronics.com/rjsX03-30.pdf>

- Panel mounting style, 30mm IP65 / IP67 switch
- SPDT or DPDT circuit • Momentary or latching function • Tag terminals
- Single or bi-colour LED illumination
- Non-illuminated, Dot LED, Ring LED or POWER illumination
- Available as Flat or Concave
- 30mm panel cut-out
- IP65 / IP67 Rated protection



LED Colours:      Finish: BLACK (Anodised Aluminium), Stainless Steel (304)

Specifications

IP Rating • IP65 / IP67

Operating Mode • SPDT, Momentary or Latching

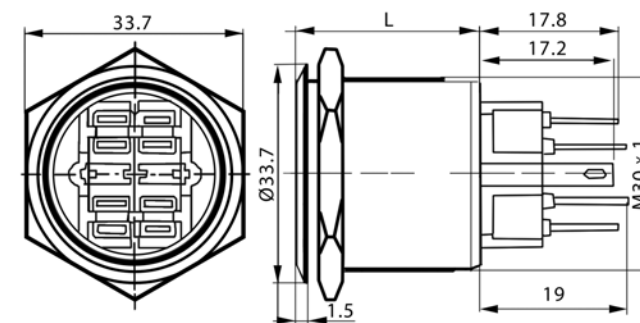
Total Travel • 1.5mm

Rating • 5A, 250V AC

Operation Life • 500,000 Cycles

Operating Temperature Range • -20°C ~ +55°C

Operating Force • Approx. 4N (400gf)



L: MOMENTARY 22
LATCHING 23.8

Please see switch pdf (link above) for full product specifications.



Piezo Switches

About Piezo Switches

Conventional electromechanical switches have moving parts that inevitably wear out.

The reliability of the electromechanical switch can be reduced by contaminants such as dust and moisture that will degrade contact points.

The solution is a Piezo Switch with no moving parts.

Piezo switches can be used with gloves etc. making them perfect for outdoor use.

With panel cut out dimensions ranging from 12 to 30mm we have every kind of piezo switch you can think of

All of our illuminated Piezo Switches are available in RGB LED!

RJS-PZ12 • 12mm Piezo Switch

<http://files.rjselectronics.com/piezo.pdf>

- Panel mounting style, 16mm IP68 / IP69K piezo switch
- SPDT or DPDT circuit • Momentary or latching function • Wired
- Non-illuminated
- Flat Disk face
- Touch-sensitive switch
- 16mm panel cut-out
- IP68 / IP69K Rated protection



Specifications

IP Rating • IP68 / IP69K

Operating Mode • SPNO, Momentary or Latching

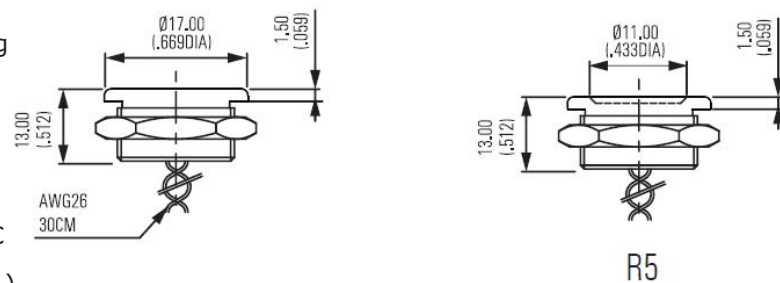
Total Travel • 0mm

Rating • 200mA, 5~24VAC/DC

Operation Life • 50,000,000 Cycles

Operating Temperature Range • -40°C ~ +75°C

Operating Force • 10.5 ± 4.5N (1.05 ± 0.45kgf)



Please see switch pdf (link above) for full product specifications.

RJS-PZ16 • 16mm Piezo Switch

<http://files.rjselectronics.com/piezo.pdf>

- Panel mounting style, 16mm IP68 / IP69K piezo switch
- SPDT or DPDT circuit • Momentary or latching function • Wired
- Single, bi-colour or RGB LED illumination
- Non-illuminated, Dot LED or Ring LED illumination
- Flat Disk, Flat Chamfered, Raised or Concave face
- Touch-sensitive switch
- 16mm panel cut-out
- IP68 / IP69K Rated protection



LED Colours:       RGB

Finish: BLACK (Anodised Aluminium), Stainless Steel (316)

Specifications

IP Rating • IP68 / IP69K

Operating Mode • SPST, Momentary or Latching

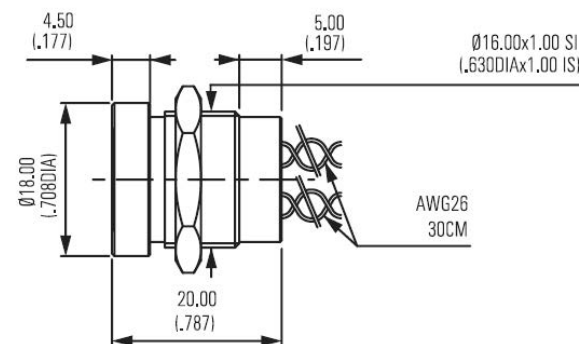
Total Travel • 0mm

Rating • 200mA, 5~24VAC/DC

Operation Life • 50,000,000 Cycles

Operating Temperature Range • -40°C ~ +75°C

Operating Force • 10.5 ± 4.5N (1.05 ± 0.45kgf)



Please see switch pdf (link above) for full product specifications.

RJS-PZ19 • 19mm Piezo Switch

<http://files.rjselectronics.com/piezo.pdf>

- Panel mounting style, 19mm IP68 / IP69K piezo switch
- SPDT or DPDT circuit • Momentary or latching function • Wired
- Non-illuminated
- Flat Disk face
- Touch-sensitive switch
- 19mm panel cut-out
- IP68 / IP69K Rated protection



LED Colours:       RGB

Finish: BLACK (Anodised Aluminium), Stainless Steel (316)

Specifications

IP Rating • IP68 / IP69K

Operating Mode • SPNO, Momentary or Latching

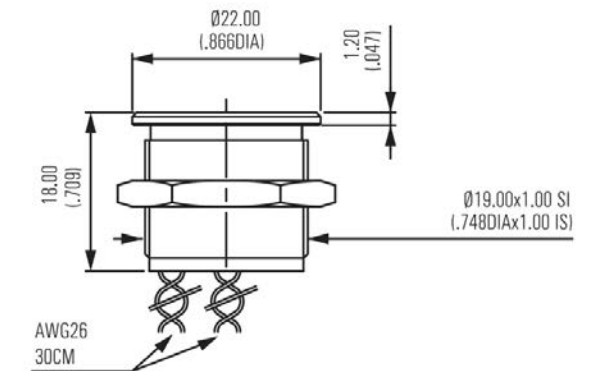
Total Travel • 0mm

Rating • 200mA, 5~24VAC/DC

Operation Life • 50,000,000 Cycles

Operating Temperature Range • -40°C ~ +75°C

Operating Force • 10.5 ± 4.5N (1.05 ± 0.45kgf)



Please see switch pdf (link above) for full product specifications.

RJS-PZ22 • 22mm Piezo Switch

<http://files.rjselectronics.com/piezo.pdf>

- Panel mounting style, 22mm IP68 / IP69K piezo switch
- SPDT or DPDT circuit • Momentary or latching function • Wired
- Single, bi-colour or RGB LED illumination
- Non-illuminated, Dot LED or Ring LED illumination
- Flat Disk, Flat Chamfered, Raised or Concave face
- Touch-sensitive switch
- 22mm panel cut-out
- IP68 / IP69K Rated protection



LED Colours:       RGB

Finish: BLACK (Anodised Aluminium), Stainless Steel (316)

Specifications

IP Rating • IP68 / IP69K

Operating Mode • SPST, Momentary or Latching

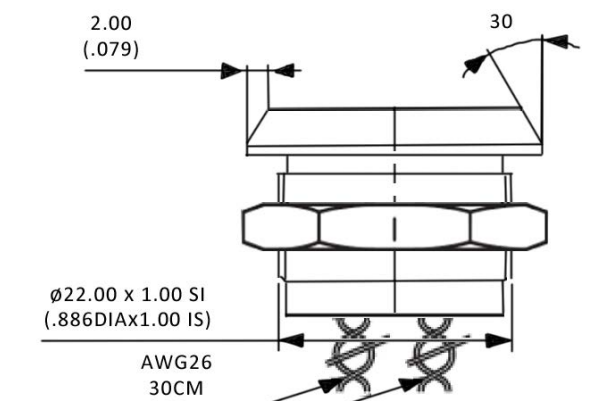
Total Travel • 0mm

Rating • 200mA, 5~24VAC/DC

Operation Life • 50,000,000 Cycles

Operating Temperature Range • -40°C ~ +75°C

Operating Force • 10.5 ± 4.5N (1.05 ± 0.45kgf)



Please see switch pdf (link above) for full product specifications.

RJS-PZ25 • 25mm Piezo Switch

<http://files.rjselectronics.com/piezo.pdf>

- Panel mounting style, 25mm IP68 / IP69K piezo switch
- SPDT or DPDT circuit • Momentary or latching function • Wired
- Non-illuminated
- Flat Disk face
- Touch-sensitive switch
- 25mm panel cut-out
- IP68 / IP69K Rated protection

LED Colours:       RGB

Finish: BLACK (Anodised Aluminium), Stainless Steel (316)



Specifications

IP Rating • IP68 / IP69K

Operating Mode • SPNO, Momentary or Latching

Total Travel • 0mm

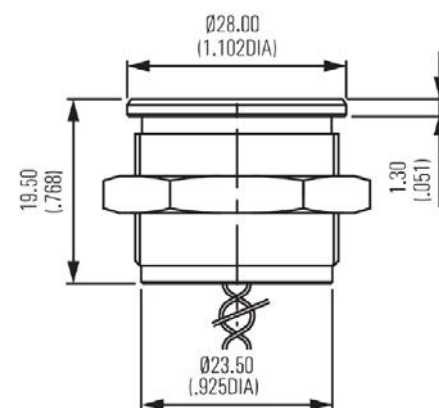
Rating • 200mA, 5~24VAC/DC

Operation Life • 50,000,000 Cycles

Operating Temperature Range • -40°C ~ +75°C

Operating Force • 10.5 ± 4.5N (1.05 ± 0.45kgf)

Please see switch pdf (link above) for full product specifications.



RJS-PZ30 • 30mm Piezo Switch

<http://files.rjselectronics.com/piezo.pdf>

- Panel mounting style, 30mm IP68 / IP69K piezo switch
- SPDT or DPDT circuit • Momentary or latching function • Wired
- Single, bi-colour or RGB LED illumination
- Non-illuminated, Dot LED or Ring LED illumination
- Flat Disk, Flat Chamfered, Raised or Concave face
- Touch-sensitive switch
- 30mm panel cut-out
- IP68 / IP69K Rated protection

LED Colours:       RGB

Finish: BLACK (Anodised Aluminium), Stainless Steel (316)



Specifications

IP Rating • IP68 / IP69K

Operating Mode • SPST, Momentary or Latching

Total Travel • 0mm

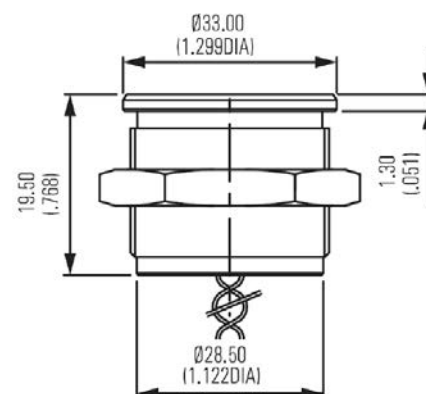
Rating • 200mA, 5~24VAC/DC

Operation Life • 50,000,000 Cycles

Operating Temperature Range • -40°C ~ +75°C

Operating Force • 10.5 ± 4.5N (1.05 ± 0.45kgf)

Please see switch pdf (link above) for full product specifications.



MD60 • 60mm Motorised Fader

<http://files.rjselectronics.com/md60.pdf>

- Motorised 60mm slide potentiometer
- Dual unit with carbon element
- Used in audio and lighting mixer consoles
- Touch-sensitive tang



Specifications

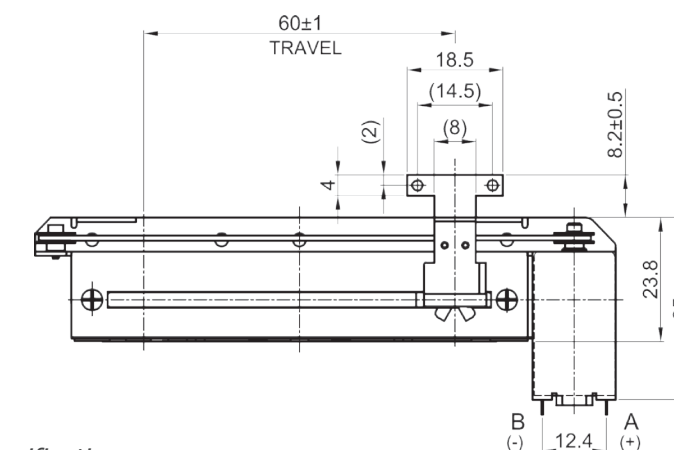
Operating Supply Voltage Range • AC 200V

Operation Life • 50,000 Cycles

Operating Temperature Range • -10°C ~ +70°C

Operating Force • 10 ~ 110gf (MAX)

Please see switch pdf (link above) for full product specifications.



MD60 • 100mm Motorised Fader

<http://files.rjselectronics.com/md100.pdf>

- Motorised 100mm slide potentiometer
- Dual unit with carbon element
- Used in audio and lighting mixer consoles
- Touch-sensitive tang



Specifications

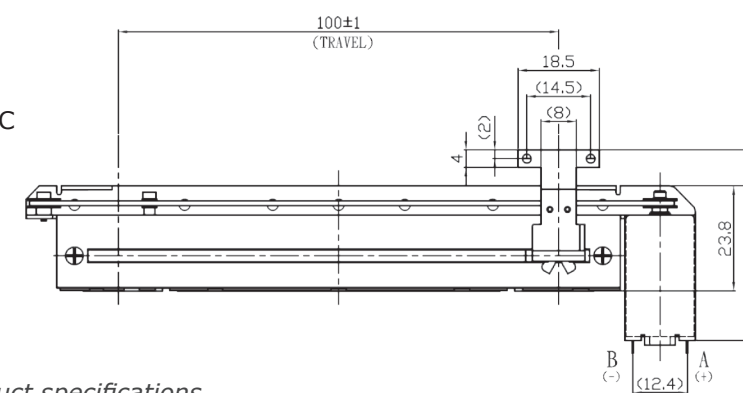
Operating Supply Voltage Range • AC 200V

Operation Life • 50,000 Cycles

Operating Temperature Range • -10°C ~ +70°C

Operating Force • 10 ~ 110gf (MAX)

Please see switch pdf (link above) for full product specifications.

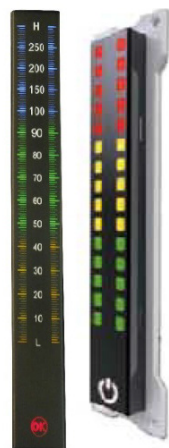


TS006 • Capacitive LED Touch Fader

<http://files.rjselectronics.com/rjs-ts006.pdf>

- Encoder: 18 Pulse scroller output, and one key center output
- Variable Resistor: 14 Position scroller output, and one key center output
- Single or bi-colour LED illumination
- Black or White cap available
- Available with or without Vibrating Feedback (motor)
- With and without cable and connector

LED Colours:    

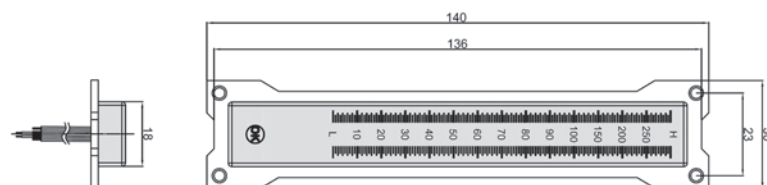


Specifications

IP Rating • IP67

Operating Supply Voltage Range • 5.5V max

Operating Temperature Range • -20°C ~ +70°C

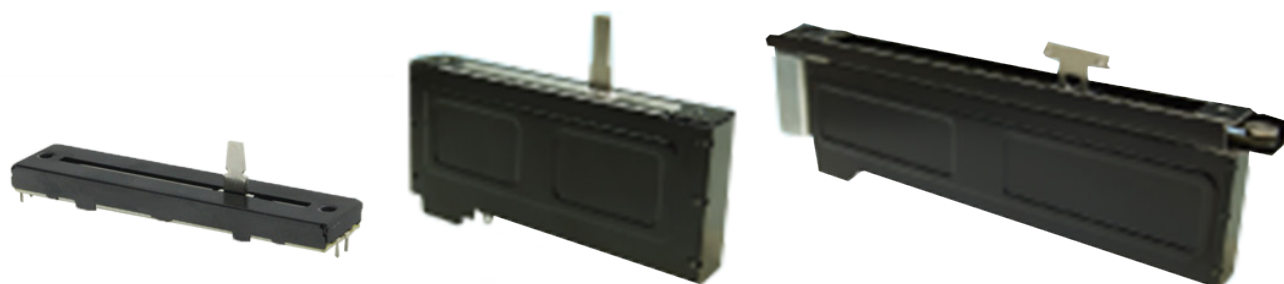


Please see switch pdf (link above) for full product specifications.

Potentiometers • 6 - 27mm

<http://www.rjselectronics.com/?Potentiometers>

- Rotary potentiometers
- Available in vertical or right angle mount
- LED illuminated potentiometers also available
- Slide potentiometers available
- Motorised slide potentiometers on page 37



Encoders • 8 - 23mm

<http://www.rjselectronics.com/?Encoders>

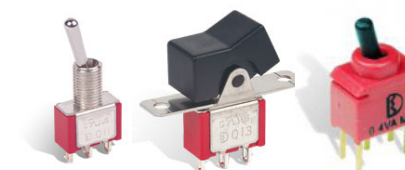
- Rotary Encoders
- SMT, PCB vertical or right angle mounting style
- LED illuminated encoders also available
- Motorised encoders available on request



Toggle / Rocker Switches • 6 - 27mm

http://www.rjselectronics.com/?Toggle_Switches

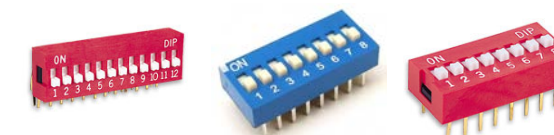
- Multi-pole and multi-position
- Wide variety of actuator and termination options
- Available with or without caps
- With or without bushing



Dipswitches • 2-12 Way

<http://www.rjselectronics.com/?Dipswitches>

- Vertical or right angle mount
- Slide or piano type
- Used in a variety of applications



Relays

<http://www.rjselectronics.com/?Relays>

- Communication relays
- General purpose relays
- Heavy duty relays
- Automotive relays
- Latching relays



LCD • LCD Character Modules

<http://www.rjselectronics.com/?LCD>

- LCD Character displays
- Available in the following sizes
8x1, 8x2, 16x1, 16x2, 16x4, 20x01, 20x02, 20x04, 24x02, 40x1, 40x2, 40x4
- Different colour LED backlight available
- Top or bottom viewing angles



Item Number	Overall Size	Viewing Area	Hole-Hole	Character Size	Dot Size
-------------	--------------	--------------	-----------	----------------	----------

8 CHARACTERS X 1 LINE

FDCC0801A	84.0X44.0	61.0X15.8	79.0X36.0	6.45X10.75	1.25X1.30
FDCC0801B	69.0X27.0	45.2X13.8	65.4	4.20X7.71	0.80X0.92

8 CHARACTERS X 2 LINES

FDCC0802B	58.0X32.0	38.0X16.0	53.0X27.0	2.96X5.56	0.56X0.66
FDCC0802C	40.0X35.4	30.4X13.9	36.0X30.9	2.95X4.75	0.55X0.55

16 CHARACTERS X 1 LINE

FDCC1601A	151.0X40.0	120.0X23.0	143.0X32.0	6.00X14.54	1.152X1.765
FDCC1601B	122.0X33.0	99.0X13.0	115.0X25.0	4.84X9.22	0.92X1.10
FDCC1601D	80.0X36.0	64.5X14.0	75.0X31.0	3.07X6.56	0.55X0.75
FDCC1601E	80.0X36.0	64.0X13.8	75.0X31.0	3.07X6.56	0.55X0.75
FDCC1601F	80.0X36.0	64.0X13.8	75.0X31.0	3.07X6.56	0.55X0.75
FDCC1601K	73.0X24.0	62.2X13.4	68.6/62.0X19.9	3.07X8.58	0.55X0.75

16 CHARACTERS X 2 LINES

FDCC1602A	122.0X44.0	99.0X24.0	115.0X37.0	5.20X9.55	1.00X1.15
FDCC1602B	85.0X36.0	63.0X16.4	80.0X31.0	3.00X5.23	0.56X0.61
FDCC1602C	85.0X32.6	64.5X16.4	79.0X29.2	3.00X5.23	0.56X0.61
FDCC1602D	85.0X29.5	64.5X16.4	81.0X24.0	3.00X5.23	0.56X0.61
FDCC1602E	84.0X44.0	64.5X16.4	79.0/76.0X36.0	3.00X5.23	0.56X0.61
FDCC1602G	80.0X36.0	64.5X16.4	75.0X31.0	3.00X5.23	0.56X0.61
FDCC1602H	83.4X37.5	65.5X14.8	77.5X31.5	2.95X4.35	0.50X0.55
FDCC1602K	78.0X24.0	66.0X18.0	----	2.95X5.55	0.55X0.65
FDCC1602L	65.5X36.7	54.0X14.4	60.5X31.7	2.55X4.99	0.47X0.58
FDCC1602N	80.0X36.0	64.0X13.8	75.0X31.0	2.95X4.35	0.55X0.50
FDCC1602P	122.0X44.0	99.0X24.0	115.0X37.0	4.84X9.66	0.92X1.10

16 CHARACTERS X 4 LINES

FDCC1604A	87.0X60.0	61.8X25.2	82.0X55.0	2.95X4.75	0.55X0.55
FDCC1604B	87.0X60.0	61.8X25.2	82.0X55.0	2.95X4.75	0.55X0.55

20 CHARACTERS X 2 LINES

FDCC2002C	146.0X43.0	123.0X23.0	139.0X36.0	4.84X9.22	0.92X1.10
FDCC2002D	116.0X37.0	83.0X18.6	108.0X29.0	3.20X5.95	0.60X0.65
FDCC2002G	80.0X36.0	64.5X16.4	75.0X31.0	2.492X4.618	0.46X0.53

20 CHARACTERS X 4 LINES

FDCC2004B	98.0X60.0	76.0X25.2	93.0X55.0	2.95X4.75	0.55X0.55
FDCC2004C	77.0X47.0	60.0X22.0	70.0X40.0	2.30X4.03	0.42X0.46
FDCC2004D	146.0X62.5	123.0X42.5	139.0X55.5	4.84X9.22	0.92X1.10
FDCC2004E	155.5X73.0	123.0X42.5	146.0X63.0	4.84X9.22	0.92X1.10
FDCC2004F	98.0X60.0	76.0X26.0	93.0X55.0	2.95X4.75	0.55X0.55

24 CHARACTERS X 2 LINES

FDCC2402E	116.0X37.0	83.0X18.6	108.0X29.0	2.70X5.55	0.50X0.65
-----------	------------	-----------	------------	-----------	-----------

40 CHARACTERS X 1 LINE

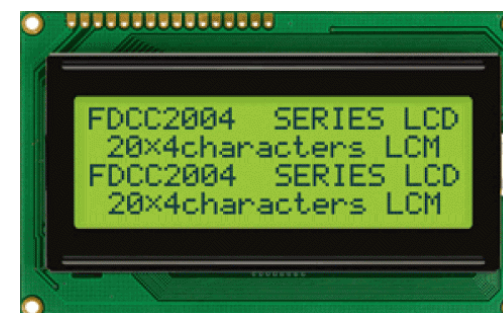
FDCC4001B	182.0X33.5	152.5X16.5	175.0X26.5	3.20X8.20	0.60X0.70
-----------	------------	------------	------------	-----------	-----------

40 CHARACTERS X 2 LINES

FDCC4002B	182.0X33.5	152.5X16.5	175.0X26.5	3.20X5.55	0.60X0.65
-----------	------------	------------	------------	-----------	-----------

40 CHARACTERS X 4 LINES

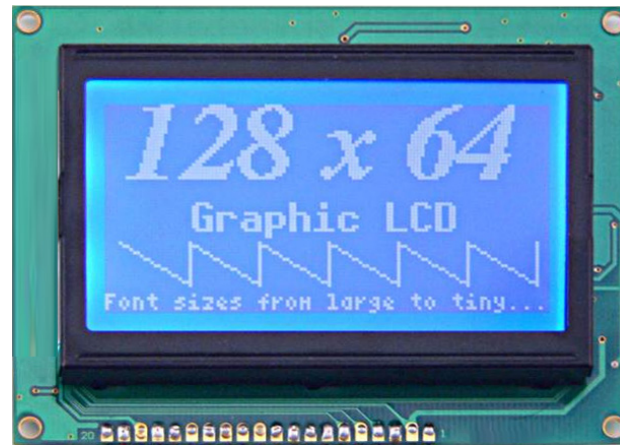
FDCC4004A	190.0X54.0	147.0X29.5	183.0X47.0	2.78X4.89	0.50X0.55
-----------	------------	------------	------------	-----------	-----------



LCD • LCD Graphic Modules

<http://www.rjselectronics.com/?LCD>

- LCD Graphic displays
- Available in the following pixel sizes
122x32, 128x64, 240x64, 128x128, 240x128
- Different colour LED backlight available
- Top or bottom viewing angles
- Smallest physical size - FDCG12864M (63.2x52.2)
- Largest viewing area - FDCG240128B (114.0x64.0)



Item Number	Overall Size	Viewing Area	Hole-Hole	Dot Size	Controller
122 X 32 DOT MATRIX					
<u>FDCG12232D</u>	84.0X44.0	64.0X17.9	79.5/76.0X36.0	0.40X0.45	SED1520DOA
<u>FDCG12232G</u>	84.0X44.0	64.0X17.9	76.0X36.0	0.40X0.45	SED1520DAA
128 X 64 DOT MATRIX					
<u>FDCG12864B</u>	93.0X70.0	72.0X40.0	88.0X64.0	0.48X0.48	KS0108B
<u>FDCG12864E</u>	78.0X70.0	62.0X44.0	68.0X65.0	0.40X0.56	KS0108B
<u>FDCG12864G</u>	87.0X71.0	62.0X44.0	75.0X67.0	0.40X0.56	KS0108B
<u>FDCG12864H</u>	75.0X52.7	60.0X32.5	70.0X49.7	0.39X0.39	KS0108B
<u>FDCG12864K</u>	78.0X70.0	62.0X44.0	68.0X65.0	0.40X0.56	T6963C
<u>FDCG12864M</u>	63.2X52.2	54.0X36.0	57.2X51.0	0.35X0.45	KS0108B
<u>FDCG12864N</u>	75.0X52.7	60.0X32.5	70.0X49.7	0.39X0.39	T6963C
240 X 64 DOT MATRIX					
<u>FDCG24064A</u>	180.0X75.0	132.0X39.0	176.0X64.0	0.48X0.48	T6963C
<u>FDCG24064B</u>	180.0X65.0	134.0X40.4	176.0X54.0	0.49X0.49	T6963C
128 X 128 DOT MATRIX					
<u>FDCG128128A</u>	92.0X106.0	73.0X73.0	85.0X99.0	0.50X0.50	T6963C
240 X 128 DOT MATRIX					
<u>FDCG240128B</u>	144.0X104.0	114.0X64.0	138.0X97.0	0.40X0.40	T6963C

RJS Electronics Limited



Bedford, United Kingdom



Tel: +44 (0) 1234 213600

Fax: +44 (0) 1234 210820

Email: sales@rjselectronics.com

Web: www.rjselectronics.com





BEDFORD, UNITED KINGDOM
WWW.RJSELECTRONICS.COM
+44 (0) 1234 213600
SALES@RJSELECTRONICS.COM