

## November 2016

We have enjoyed a beautiful Autumn this year. The trees in the Meadow have been shades of green, red and yellow giving us opportunities to talk about the shades of colours as well as counting the leaves as we have fun trying to catch them. Several parents have noticed that Chloe has put on a bit of weight recently!! She is delighted to share with you that she is expecting a new addition to the House family in early February. After Christmas Chloe will be taking some time off but will still be popping into the nursery regularly and will return to normal duties from April. In the meantime, please do come and see me if you have anything you wish to discuss. Best wishes, Louise ☺



### Reviewed Opening Hours

We have responded to Parent feedback in our Survey and will be opening at 7.30am from January 4<sup>th</sup>. To enable us to staff appropriately at 7.30am could you please let us know if you are planning to bring your child to nursery between 7.30 and 7.45am during January. Please note that there is no additional charge for this service.

### Training Day Feedback

The focus of the Training Day was Outdoor Play and how we can develop it further as an effective teaching and learning environment. We reviewed our provision and how accessible it was to the children, then discussed outdoor role play, the benefits of the outdoors in encouraging positive behaviour and developed ideas of how we can make the outdoor provision more accessible to the children for a longer part of the day. As a result we now have more resources available at all times outside to inspire and motivate the children to continue their learning outdoors.



### Parent Survey

Please take some time to look at the Parent Survey in the hallway. Many thanks to all the parents who gave us such valuable feedback. Your comments help us to continually improve the services that we provide to you and your family and support our action planning for the remainder of this academic year.



**STAY SAFE** 'Safeguarding is everyone's responsibility'

The Designated Safeguarding Leads at the Beehive are Chloe, Louise and Debbie (see photos).



Should you have any concerns about a child, parent or member of staff at any time, please contact us. In the event of a concern, we would then assess the level of need according to guidance in the document 'Effective Support for Children and Families in Somerset' issued by Somerset Safeguarding Children Board (SSCB) and take the necessary action with parental consent as appropriate.



**Please join us for 'Our Christmas Celebration', followed by Carols and Christmas songs on Saturday 10<sup>th</sup> December at Oake village Hall. Doors will open from 10am with performance starting at 10.30am.**

The Worker Bees are looking forward to performing their version of the Christmas Story for your enjoyment. We will also be singing some carols and Christmas songs which we hope you will join in with. We will shortly be sending out a letter asking you to confirm the number of seats required. There is a strict maximum number of adults permitted at Oake Village Hall, we therefore have to limit the number available to two per child. Worker Bees parents should have already received their letters. Tickets will be offered to all other parents from Friday 25<sup>th</sup> November. Siblings are more than welcome to come along.

### **Pete the Poet-Diversity Voice Event**

We are delighted to share that 'Pete the Poet' will be coming into the nursery on Thursday 12<sup>th</sup> January. He will be leading activities for all of the children throughout the day linked to rhyme, having fun with words and sharing cultural stories. We will be inviting parents along too – details to follow! Unfortunately due to being almost at capacity on a Thursday we are unable to accommodate children who do not attend on a Thursday, however we will be arranging for other visits on different days of the week in future months.

### **Beehive Library Books**

We are passionate about instilling an early love of books and reading in our children. Some children already like to borrow books from the office or the hallway and return them once they have been read. Claire from Busy Bees has been developing a library system for our books that will be stored in a bookcase in the hallway. This will enable all children to choose a book at the end of the day and understand that they are borrowing it to bring it back once it has been read. The children will each have their own library card. There will be a much wider range of fiction and non-fiction books available to borrow along with parent packs of games and activity ideas you can complete at home with your child.



### **School Applications-Deadline 15<sup>th</sup> January 2017**

Many thanks to those parents who attended our School Readiness Evening.

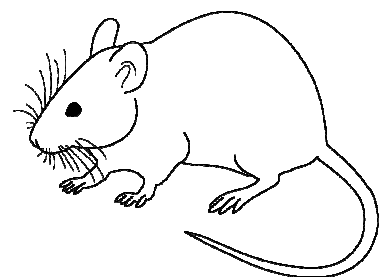
We hope that you found the evening both informative and enjoyable. We would like to remind parents about the importance of making 3 choices (the maximum) on your application. If you only put one choice, especially if you live outside of the catchment area, you run the risk of your child being allocated a school that is not only further away, but one which you have not previously visited. We would highly recommend you contacting your chosen schools and arrange to view the school to get a feel about what you want for your child.

### **Alfred the Mouse...goes to school**

This is an innovative new project supporting children with their transition into primary school.

*Alfred the Mouse Goes to School* is a new project that the Taunton Early Years Cluster groups have launched across more than 300 Somerset Early Year settings to support under-fives with the sometimes daunting transition to primary school.

Each nursery has their very own Alfred the Mouse soft toy and the project has developed a series of creative activities addressing specific areas within the Early Years Foundation Stage. These will support children's imagination and development as they explore Alfred's journey to school and through the journey, enable them to reflect on their own transition.



To accompany Alfred on his journey, Take Art has created a website [www.alfredthemouse.co.uk](http://www.alfredthemouse.co.uk) with a dedicated mini-site which includes most of the primary schools in the Taunton area. Alfred can be seen taking part in the reception class and wider school environment. The slideshow follows Alfred around the school in his favourite places chosen within the reception classes. There is a surround-around (a full panoramic 3D view) of the reception class, through which practitioners, teachers, parents and children will be able to explore their child/children's future classrooms. Where a school has two reception classes, there are two panoramic views. We would highly recommend you exploring this site once your school choice has been confirmed.

### Banana brownies *(makes 10-15 squares)*

100g margarine

250g soft brown sugar

6 small mashed bananas

200g self raising flour



#### Method

1. Melt together the margarine and the sugar.
2. Add the mashed bananas and flour, mix well.
3. Scoop into a greased, 1 inch deep baking tin.
4. Bake at 180°C for 20 minutes.

#### **Staff profile of the month: Claire Moore**



Claire gained her National Diploma in Early Years in 2008 and has worked at the Beehive since May 2015. She enjoys spending her spare time reading, writing and painting. On her day off Claire can often be spotted in a coffee shop with a good book. Her love of books has led her to be our Literacy co-ordinator, auditing our books and preparing our new children's library.

---

## **IMPORTANT DATES 2016/2017**

Saturday 10<sup>th</sup> December **Nativity and Carols**

Friday 23<sup>rd</sup> December **Last day of term**

Monday 26<sup>th</sup> December-Monday 2<sup>nd</sup> January **Christmas Closure Period**

Tuesday 3<sup>rd</sup> January 2017 **Staff Training Day** (nursery closed) **Child Protection Training**

Thursday 12<sup>th</sup> January 2017 **Pete the Poet Diversity Event**

Thursday 13<sup>th</sup> April 2017 **Staff Training Day** (nursery closed)

Wednesday 6<sup>th</sup> September 2017 **Staff Training Day** (nursery closed)