

Ro-fire 600 >

The **Ro-fire 600** is designed for smaller openings where fire protection is required, and aesthetic appearance is important. The **Ro-fire 600** has been tested and certified for up to two hours' fire protection, and is commonly installed on kitchen servery hatches and reception counters.



Specifications:

Curtain

Cold-rolled 75mm curved traditional 22swg (0.7mm thick) galvanised lath. 50mm galvanised flat lath is also available.

Alternate laths are fitted with high-quality pressed steel end-locks, which are double-pop riveted to prevent lateral movement. A high strength inverted T-section bottom rail is added to the base of the curtain for rigidity and fire integrity.

Flags

Endplates are constructed from flat 6mm thick mild steel plate bolted to the endplate using high-tensile hexagon-head bolts.

The motor drive endplate is fitted with a motor-mounting plate using hexagon-head high-tensile-set screws. The non-motor end is fitted with a lost bobbin arrangement.

Fixing angles are formed using hot-rolled angle sections, 75mm x 50mm x 6mm, attached to the fixing angles are the galvanised guides. The guide section is typically 64mm in depth x 32mm outside dimension, and the thickness is 3mm.

The flags are coated in a black primer paint finish, and are also available in a galvanised finish.

Barrel

4" Outside diameter electric resistance welded tube which supports the steel bearing blocks.

Coil Casing / Fascia

Slotted fire coil casing is made from 20swg galvanised mild steel, c/w 50mm x 9mm obround shaped slots. Fascias are also available.

Finish

The Ro-fire 600 can be polyester powder-coated in a range of standard RAL colours. For shutter doors in high-salinity or high-pollution areas such as within 5 km of the coast, abattoirs, swimming pools, water treatment works or heavy industrial areas we recommend a marine-grade finish is applied.

Controls

The 'Ro-fire 600' can be operated via either a rocker-switch or a key-switch.

Power / Activation Details

Ro-fire 600 Fire Shutters are linked into the fire alarm system as standard, otherwise a local smoke detector will be required (by others) to activate the shutter.

The fire signal required is a normally open volt-free signal. A Ro-door 600 Fire Shutter must have a "maintained supply". A battery backup system can be provided.

Fixing Arrangements

The Ro-fire 600 can be installed to most type of wall or openings using a combination of fixings. They can be installed on the face or within the reveal of an aperture.

Release Mechanism

Activated upon receipt of a signal from the fire alarm / smoke detector, the tubular motor drives the shutter to the fully-closed position.

Motor

240-volt tubular motor which is totally concealed within the barrel, complete with a manual override at high level to allow operation in the event of power failure.

Option:

Fire Door Interface Panels & Repeaters

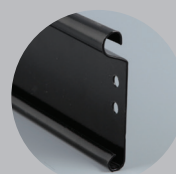
Activated upon receipt of a signal from the fire alarm / smoke detector, a time delay can be programmed into the fire door interface panel (FDI), whereby the signal will be held from the shutter until the programmed time has elapsed.

During the time delay the FDI panel will flash "DOOR CLOSING". Simultaneously an audible alarm will sound. Once the time has elapsed, the shutter will then close.

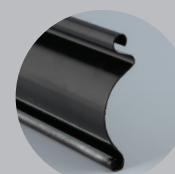


Curtain Design Options:

The Ro-fire 600 is available in the following two options.



R50
50mm flat lath



R75
75mm curved lath