

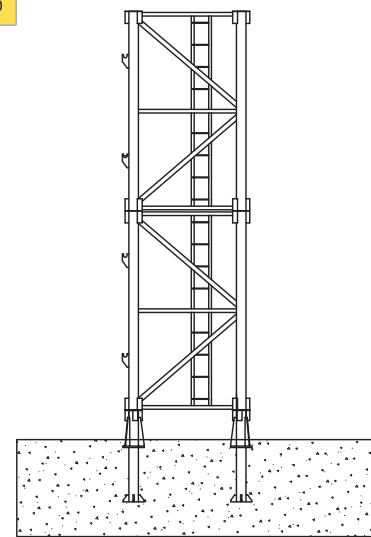
TC 7059 Tower Crane

20 t

Load Capacity

Jib Length	Radius (m)		3.5~21.19	25	30	35	38	40	43	45	48	50	53	55	58	60	63	65	68	70	
	70m	Hoisting Load (t)		20.00	16.42	13.16	10.86	9.78	9.15	8.32	7.83	7.17	6.77	6.24	5.92	5.47	5.20	4.83	4.60	4.29	4.09
			10.00							9.43	8.94	8.28	7.88	7.35	7.03	6.58	6.31	5.94	5.71	5.40	5.20
65m	Radius (m)		3.5~21.72	25	30	35	38	40	43	45	48	50	53	55	58	60	63	65			
	Hoisting Load (t)		20.00	16.92	13.57	11.21	10.10	9.45	8.60	8.10	7.42	7.02	6.47	6.14	5.68	5.41	5.02	4.79			
		Hoisting Load (t)		10.00							9.71	9.21	8.53	8.13	7.58	7.25	6.79	6.52	6.13	5.90	
	Radius (m)		3.5~22.46	25	30	35	38	40	43	45	48	50	53	55	58	60					
60m	Hoisting Load (t)		20.00	17.62	14.15	11.70	10.55	9.88	9.00	8.48	7.78	7.36	6.79	6.45	5.98	5.69					
			10.00							9.59	8.89	8.47	7.90	7.56	7.09	6.80					
55m	Radius (m)		3.5~22.80	25	30	35	38	40	43	45	48	50	53	55							
	Hoisting Load (t)		20.00	17.94	14.42	11.93	10.76	10.08	9.18	8.65	7.94	7.52	6.94	6.59							
		Hoisting Load (t)		10.00							9.76	9.05	8.63	8.05	7.70						
	Radius (m)		3.5~22.96	25	30	35	38	40	43	45	48	50									
50,45,40m	Hoisting Load (t)		20.00	18.09	14.54	12.04	10.86	10.17	9.27	8.74	8.02	7.59									
			10.00							9.85	9.13	8.70									

Outrigger Stationary

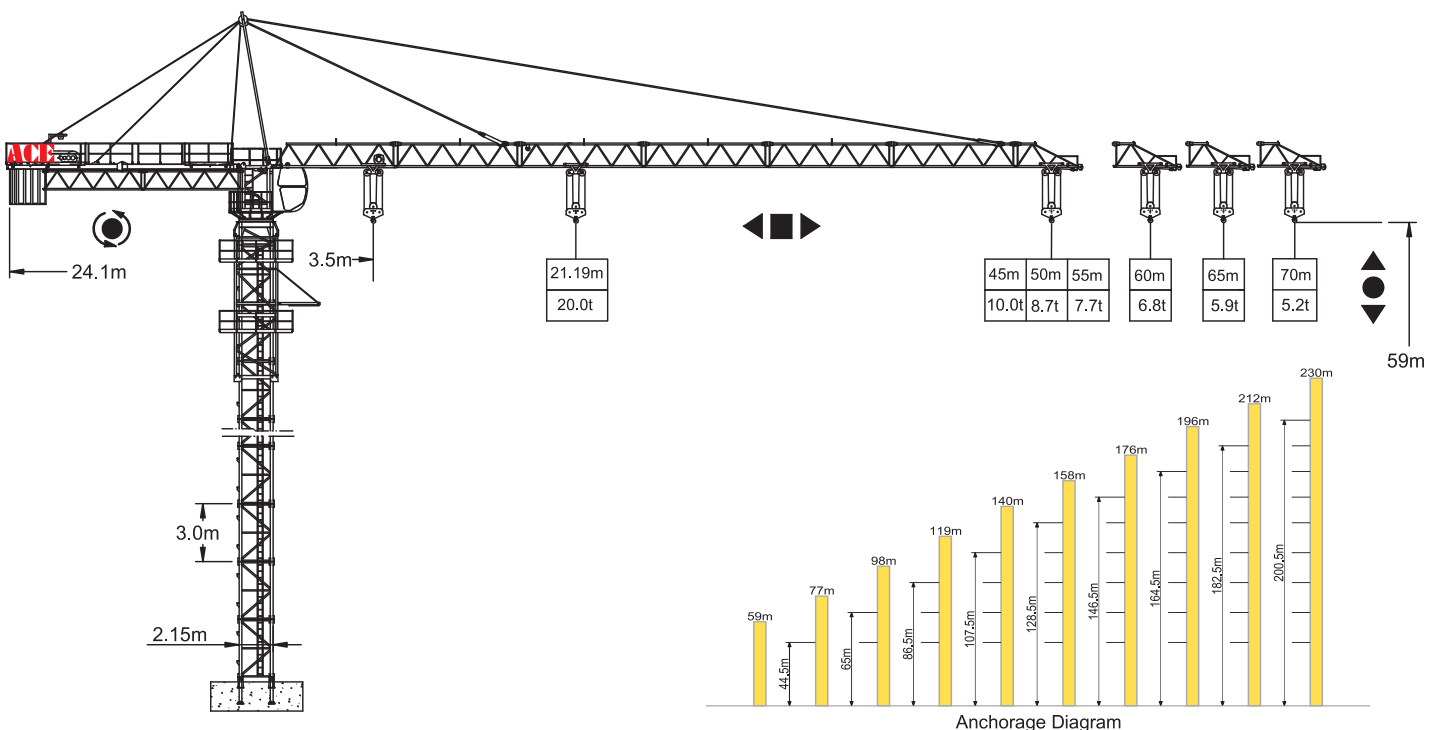


F1 ↓ ↑ F2

F1	◇ 143t	△ 171t	
F2	◇ 240t	△ 256t	141t

Specifications

Hoisting	No of Falls		
	Speed (m/min)	0 ~ 45	0 ~ 96
	Hoisting Load (t)	10.0	5.0
	Power (kw)	90	90
Stewing	Speed(rpm)	0 ~ 0.72	
	Power(kw)	3 x 5.5	
Trolley	Speed(m/min)	0 ~ 100	
	Power(kw)	11	
Climbing	Speed(m/min)	0.46	
	Power(kw)	11	
Main Supply	415V / 50Hz		
Electric Power	117.5 kw (146.9 kVA)		



Anchorage Diagram

F Reaction ◇ In Service △ Out of Service Dead weight without load and counter weight but with longest jib and free standing height.