

fig.1 - Abb.1

**INTRODUCTION**

Thank for your confidence in our Company and for choosing one of our products. This is an encased, liquid-filled type, double THERMOSTAT, provided with a temperature adjuster and a safety limiter with manual reset (mod. TLSC) or automatic reset (mod. TLSC/A). Controls intended for incorporation into appliances within the scope of the IEC 60335-1

**CONFORMITY TO THE STANDARDS**

- EN 60730-1 and subsequent revisions
- EN 60730-2-9

**CONFORMITY TO THE GUIDELINES**

- This product complies with:
  - B.T. 73/23/EEC
  - E.M.C. 89/336/EEC
  - and later updating of 93/68/EEC
  - CA02.03781 Serie TLSC/A

**TECHNICAL DATA**

- TEMPERATURE RANGE = adjuster 0° ÷ 90° C  
limiter 90° ÷ 110° C
- TOLERANCE = adjuster ±5k  
limiter -15k; -6k (depending on versions)
- TEMPERATURE DIFFERENTIAL = adjuster 6±2k; 4±1k (depending on versions)  
limiter 25±8k; 15±8k (depending on versions)
- AUTOMATIC RESET (TLSC/A) AND MANUAL RESET (TLSC)
- DEGREE OF PROTECTION = IP 40
- INSULATION CLASS = I
- TEMPERATURE RATE OF CHANGE = < 1K/min.
- MAXIMUM HEAD TEMPERATURE = 80° C
- MAXIMUM SENSING BULB TEMPERATURE = 125° C
- STORAGE TEMPERATURE = -15° ÷ 55° C
- MAXIMUM POCKET PRESSURE = 10 bar
- TIME CONSTANT = < 1'
- CONTACTS RATING = C-1 ADJ.: 10(2,5) A/250V~; C-2 ADJ.: 6A(2,5) A/250V~  
C-1 LIM.: 0,5 A/250V~; C-2 LIM.: 10(2,5) A/250V~
- OUTPUT = cutoff or switching contacts
- SWITCH ACTION = 1B
- POLLUTION DEGREE = 2
- FAIRLEAD TYPE = M 20x1,5
- IMPULSIVE VOLTAGE = 2,5 KV
- GROUNDING WAY = a vite
- MOUNTING WAY = a vite

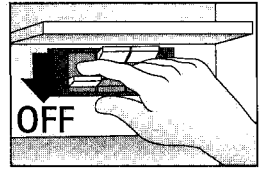


fig.2 - Abb.2

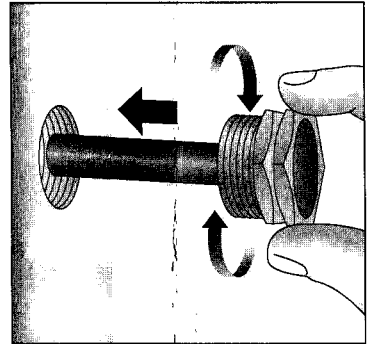


fig.3 - Abb.3

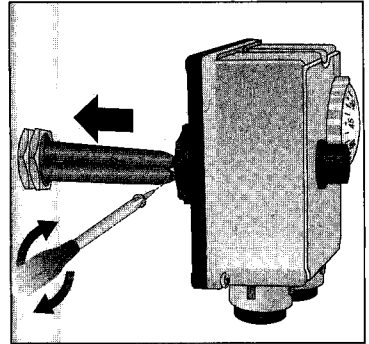


fig.4 - Abb.4

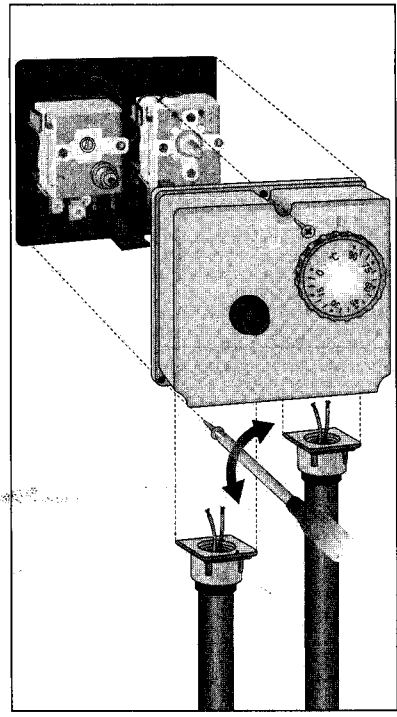


fig.5 - Abb.5

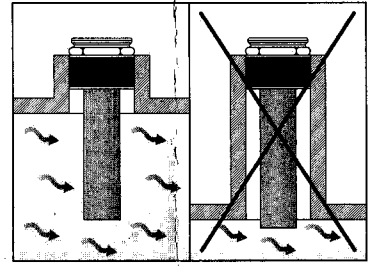


fig.6 - Abb.6

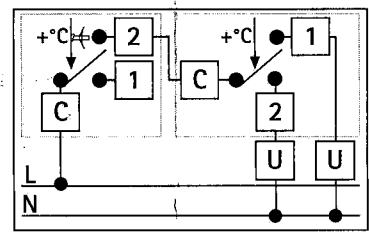


fig.7 - Abb.7

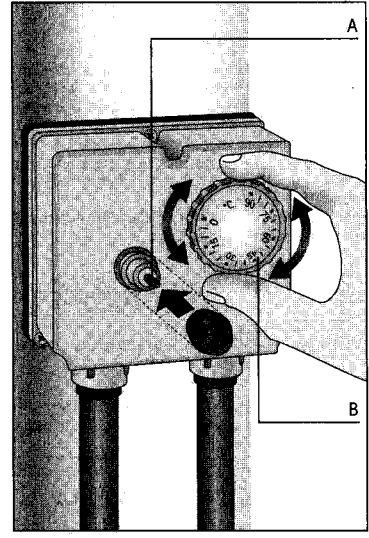


fig.8 - Abb.8

**INSTALLATION AND CONNECTIONS**

**SAFETY INSTRUCTIONS**

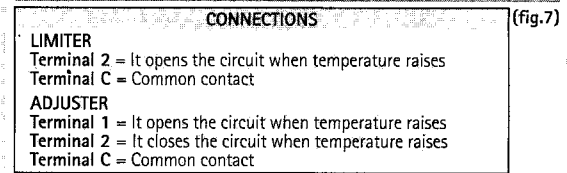
Before connecting the thermostat, make sure that the power supply voltage of the UNIT TO BE CONTROLLED (boiler, pump, etc.) IS NOT CONNECTED and that it matches the indication given on the appliance. (fig.2)

**INSTALLATION**

**WARNING:**  
All the installation operations included in this manual must be carried out by qualified personnel only, strictly complying with all safety and law provisions in force.

- A) See fig.3 and fig.4
  - B) Remove the thermostat front cover by releasing the three provided screws. Thread the power supply wires in the relevant fairlead and connect them to the thermostat terminals (fig.5) according to the instructions of the following paragraph "Wiring Connections". Snap the front cover back. NOTE: See fig.6.
- To snap back the front cover, the knob hole must coincide with the temperature-adjusting pin.

**WIRING CONNECTIONS**



**TEMPERATURE SETTING**

- See fig.8.
- A = Reset button (TLSC only)
- B = Temperature adjusting knob