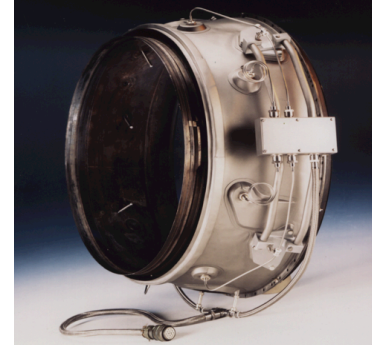




# RTH0106941A Thermocouple Harness & Analyser lead

---

The **RTH0106941A five box or two box type Thermocouple & Analyser Harness Assembly** is a full retrofit system designed specifically for industrial Avon operations. These models have been designed and developed to overcome problems caused by high engine temperature, vibration and possible extraneous hot gas emissions. With five high grade aluminium housings that are mounted off the exhaust casing for maximum heat dissipation we solve these problems.

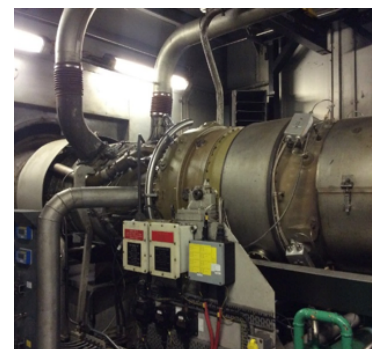


There is one common, double insulated, sheathed thermocouple for all eight positions and our design of thermocouple incorporates three alumel/chromel junctions encased in an Inconel outer sheath. When in operation the thermocouple response time is under 1 second-giving the operator confidence and control.



## KEY FEATURES

- A Modular system construction allows reduces engine downtime with a typical in-field system retrofit time of three hours.
- Sight location keyways and full key change without nut removal.
- Pre-set system allowing full inter-changeability of all four looms plus the analyser harness.
- Integral analyser harness complete with a 14 pin connector.
- Proven reliability, over 12,000 hours achieved with an operator, running on base load without a failure. Warranty period 4000 hours or 1 year.
- Installation manual supplied with detailed assembly and electrical check procedures.

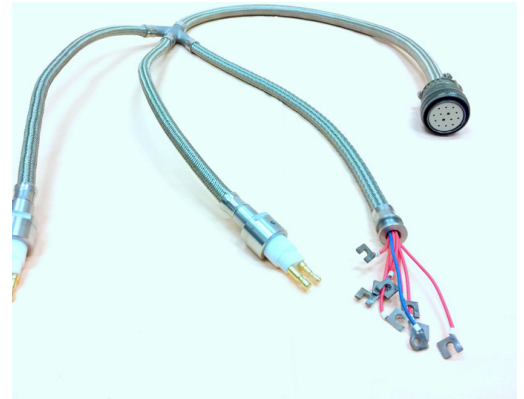


**For enquiries and quotations**  
please visit [www.rolaar.co.uk](http://www.rolaar.co.uk)  
telephone +44 (0)1923 268444 or  
email [sales@rolaar.co.uk](mailto:sales@rolaar.co.uk)

## Analyser Lead with Cannon Plug

The Analyser lead can be purchased on its own from Rolaar and is supplied as standard with RTH0106941A five box or two box type Thermocouple & Analyser Harnesses.

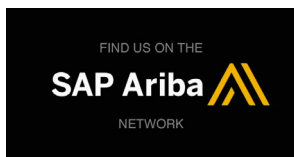
- Leads come supplied with a 14 pin Cannon plug fitted
- All Looms and analyser harnesses have multi-layer heat and abrasion protection, stainless steel braided outer casing with an inner sleeve of convoluted PTFE tubing and silicone rubber sleeve inserts in stainless steel union couplings.
- The internal loom assemblies are constructed from PTFE “Kapton” insulated wiring, bonded by heat shrink sleeving. The analyser harness is located away from the exhaust casing and transition section joint eliminating possible heat ingress.



RTH0106941A prices start at £25,500 and can be reduced for higher quantity orders

Analyser leads start at £6750

Rolaar offer ongoing production and service of these units.



Issued by the technical publications department  
Rolaar Limited.  
Unit 6, Monaco Works, Station Road,  
Watford, Herts WD4 8LQ. UK

sales@rolaar.co.uk  
[www.rolaar.co.uk](http://www.rolaar.co.uk)  
01923 268444