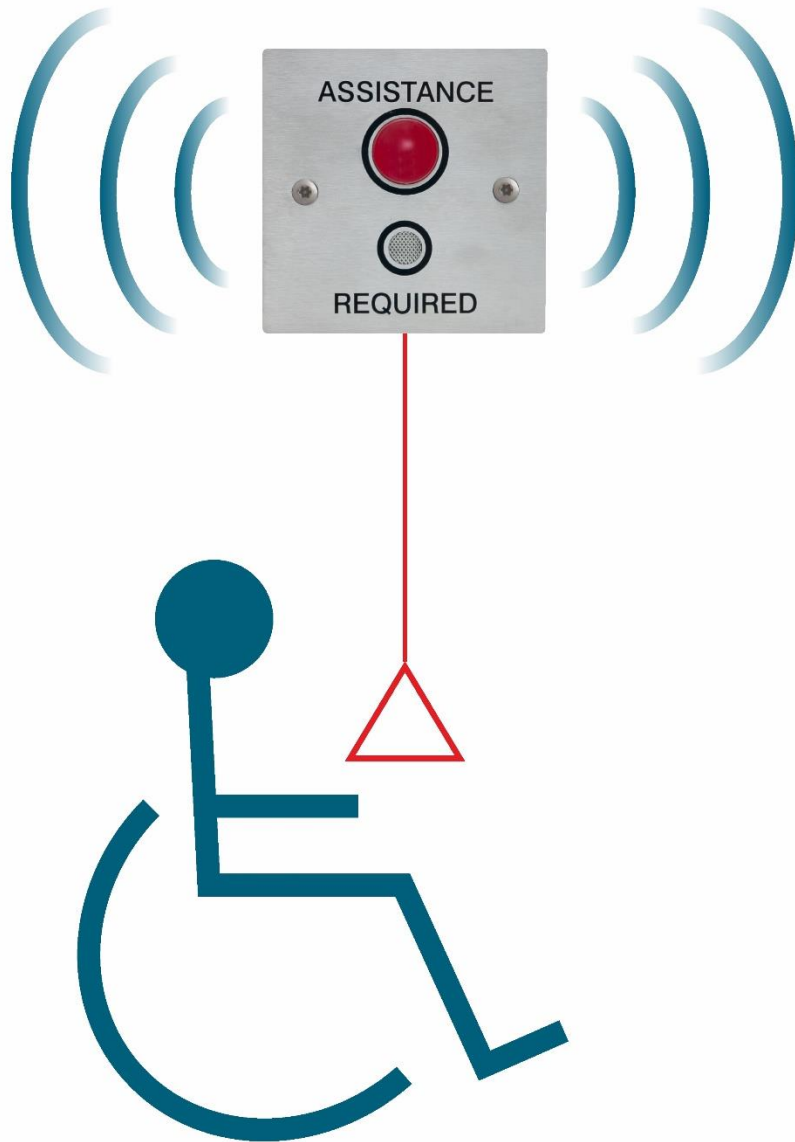




**Folknoil Group Ltd.**

# **DISABLED TOILET ALARMS**



**BS8300:2009 COMPLIANT  
TOUGH, VANDAL RESISTANT  
IDEAL FOR PUBLIC USE**

## CONTENTS

1	TOILET / EMERGENCY ASSIST ALARMS.....	1
2	BASIC (COST-EFFECTIVE) SYSTEMS.....	2
3	ENHANCED (FULLY FEATURED) SYSTEMS.....	3
4	ILLUMINATED ALARM STRIP SYSTEMS.....	4
5	MONITORING OVER DEDICATED CABLES.....	5
6	MONITORING OVER TELEPHONE NETWORKS.....	6
7	MONITORING OVER IP NETWORKS.....	7
8	NIOS NETWORK MONITORING SOFTWARE.....	8
9	COMBINE DISABLED TOILET AND OTHER SYSTEMS.....	9

ISSUE	DATE	DESCRIPTION
V 1.00	04.01.2017	Original
V 1.01	14.01.2017	Telephone reset updated
V 1.02	20.02.2017	Images updated, combined systems updated

## THIS DOCUMENT

This document is the Product Information data sheet for the Folknoll Group Ltd Disabled Toilet Alarms.

## ABOUT FOLKNOLL

We are a UK based design, manufacturing and installation company. We have been producing communication, alarm and control systems since 1975. All of our products and systems are designed for toughness, reliability, easy installation, simple configuration, straightforward operation and low maintenance. As original manufacturer, all of our product ranges can be customised to suit your application. Including custom engraved panels, additional features and special systems.

## GET IN TOUCH

Please contact us for further information about our wide range of products and services and find out how we can provide a solution for you.

**ADDRESS:** [Old North Rd, Royston HERTS, SG8 5TD, UK](#)  
**TEL:** [+44 \(0\) 1763 234567](#)  
**EMAIL:** [sales@folkknoll.co.uk](mailto:sales@folkknoll.co.uk)  
**WWW:** [www.folkknoll.co.uk](http://www.folkknoll.co.uk)

# 1 TOILET / EMERGENCY ASSIST ALARMS

## WHAT IS A DISABLED TOILET / EMERGENCY ASSIST ALARM?

A disabled toilet alarm is an alarm system that allows a person in distress to call for assistance.

## TYPICAL DISABLED TOILET ALARM SYSTEM

A typical system comprises a pull cord unit and reset button located inside a toilet with a beacon / sounder located outside the toilet. The beacon sounder is usually mounted near the toilet door to indicate the source of the alarm



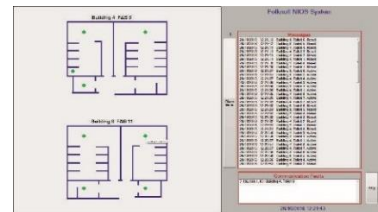
### PULL CORD AND BEACON SOUNDER

If assistance is required, the user pulls the pull cord and activates the alarm. The beacon sounder outside the toilet sounds and flashes to attract attention.



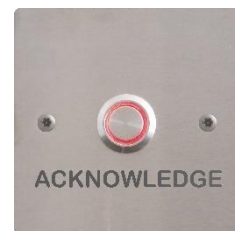
### REMOTE MONITORING

Larger sites may also have remote monitoring located in receptions, security rooms etc. to attract the attention of staff. We offer remote monitoring over dedicated cables, telephone networks, IP networks and combinations of the above. Alarms may be muted but not cancelled remotely. Requiring staff to attend the location of the incident to reset the alarm.



## ACKNOWLEDGE / ACCEPT

An acknowledge or accept button maybe fitted outside the toilet. The acknowledge button silences the sounders and causes beacons to stop flashing and illuminate continuously for two minutes. Staff responding the alarm may press the acknowledge button to reassure the user that help has arrived and make voice communication easier.



### RESET

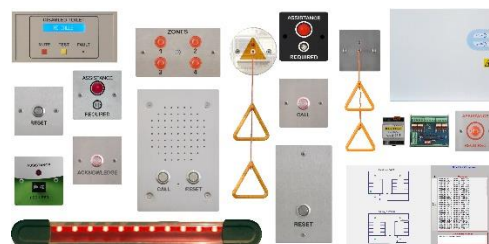
When the situation has been resolved the reset button inside the toilet is pressed to turn off the alarms and reset the system. The system is now ready for the next alarm activation. If the alarm is not reset within two minutes of being acknowledged the alarm sounders are reactivated and the beacons will start to flash.



## FOLKNOLL

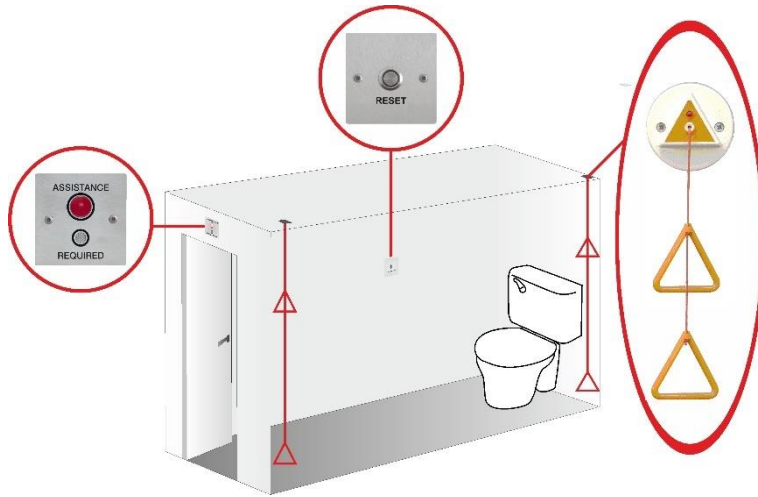
We offer a wide range of emergency assist / toilet alarm modules including activators, indicators, controls, PSUs, and interfaces.

Enabling us to build the right system for you.



## 2 BASIC (COST-EFFECTIVE) SYSTEMS

For locations with simple requirements we recommend our cost-effective basic systems. These provide basic, simple to operate, vandal resistant, assistance alarm system – ideal for public spaces.



**Cost effective**

**Tough vandal resistant**

**BS8300:2009 Compliant**

**Screw terminal connection**

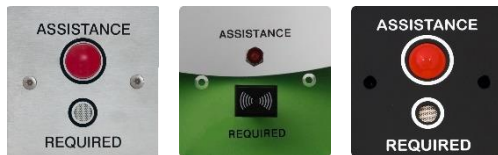
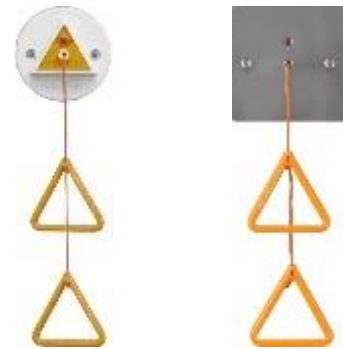
**Range of activators**

**Range of annunciators**

**Ideal for public places**

### RANGE OF ALARM POINTS

One or more pull cords, call switches or other activators to allow users to call for assistance. Located to allow easy access whilst standing, fallen on the floor and for wheelchair users.



### RANGE OF BEACON SOUNDERS

One or more beacon sounders located outside the room to attract attention in the event of an alarm, helping staff identify the source of the alarm.

### RESET UNIT

A basic reset unit to enable staff to reset the alarm. Usually located inside the room to encourage staff attendance in response to an alarm.



### POWER SUPPLY UNIT

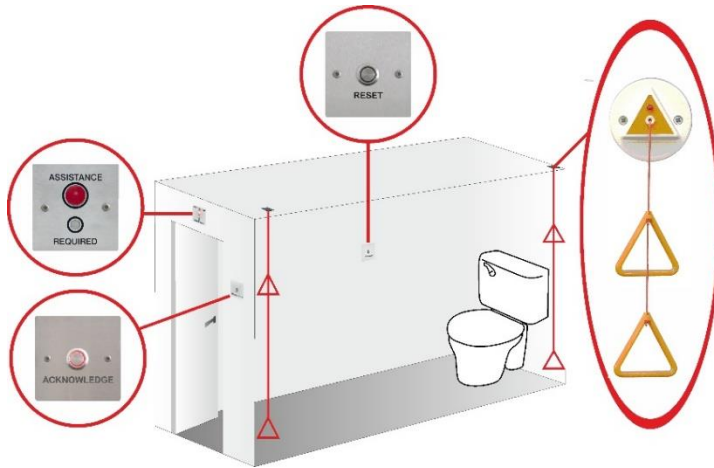
A battery backed PSU to maintain operation in the event of a mains supply fail.

### SIMPLE OPERATION

- The user activates the alarm by pressing a call point or pulling a pull cord.
- The beacon sounder is activated to attract attention.
- Staff respond to the alarm, and press the reset button when the incident is resolved.

### 3 ENHANCED (FULLY FEATURED) SYSTEMS

For areas that require an acknowledge function and other special features we recommend our fully featured, enhanced systems.



**Tough vandal resistant**

**BS8300:2009 Compliant**

**Acknowledge function**

**Heartbeat option**

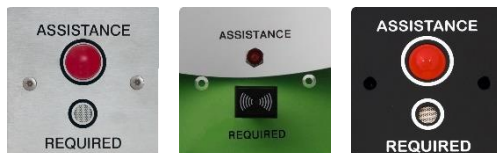
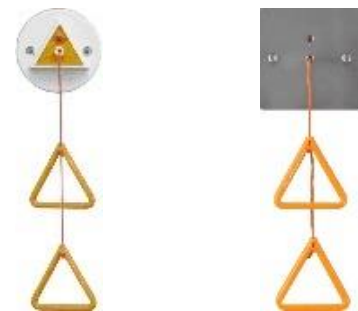
**Range of activators**

**Range of annunciators**

**Ideal for public places**

#### SAME RANGE OF ALARM POINTS

One or more pull cords, call switches or other activators to allow users to call for assistance. Located to allow easy access whilst standing, fallen on the floor and for wheelchair users.



#### SAME RANGE OF BEACON SOUNDERS

One or more beacon sounders located outside the room to attract attention in the event of an alarm, helping staff identify the source of the alarm.



#### ADDITIONAL ACKNOWLEDGE / ACCEPT FUNCTION

The enhanced system offers an acknowledge button allowing staff to 'accept' and temporarily mute alarms. Reassuring users that help has arrived and making verbal communication easier.

If the alarm has not been reset within two minutes the alarm is reactivated.

#### ADDITIONAL AUDIBLE REASSURANCE

The enhanced reset has an internal buzzer that mimics the action of the beacon sounder giving the user a positive audible alarm activation indication inside the toilet.

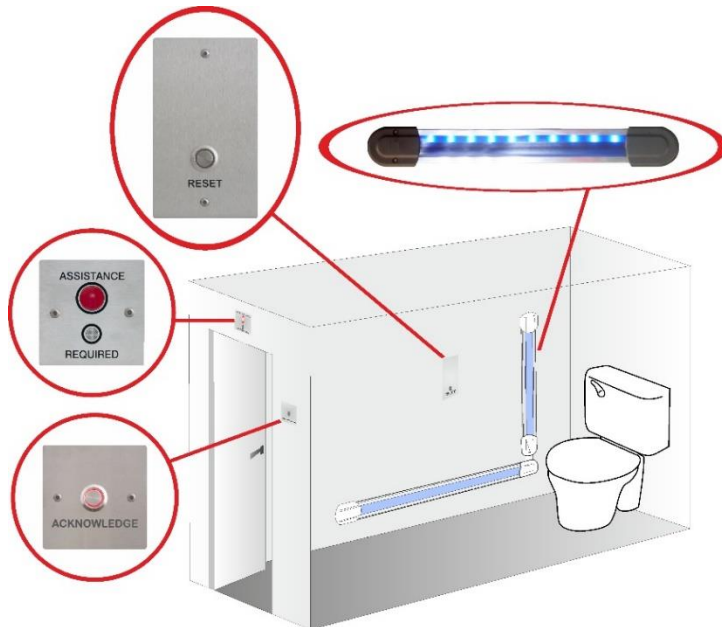


#### OPTIONAL HEARTBEAT

If the heartbeat option is selected reset buttons, call point buttons, pull cord LEDs and beacons are periodically flashed, to reassure users and staff that the alarm system is powered and operating correctly.

## 4 ILLUMINATED ALARM STRIP SYSTEMS

Illuminated alarm strips offer a great alternative or addition to pull cords. Alarm strips can cover long walls, staircases etc. and the illumination, (which is battery backed), can be useful if the mains fails. In addition to standard strips we offer IP65 and IP66 versions suitable for pools, showers and similar locations.



**Tough vandal resistant**

**BS8300:2009 Compliant**

**Illuminated alarm strips**

**Choice of colours**

**Acknowledge function**

**Fault monitoring**

**Range of annunciators**

**Ideal for anti-ligature environments**

### MOUNTING

Alarm strips can be mounted horizontally, at an angle or vertically. Brackets, corners, bends etc. are available for changes in direction. Multiple strips can activate the same alarm, allowing parallel strips at different heights along a wall. Alarms are activated by pressing a strip anywhere along its length. The entire strip is illuminated by LEDs, which flash on alarm activation providing user reassurance, source indication and deterrence.



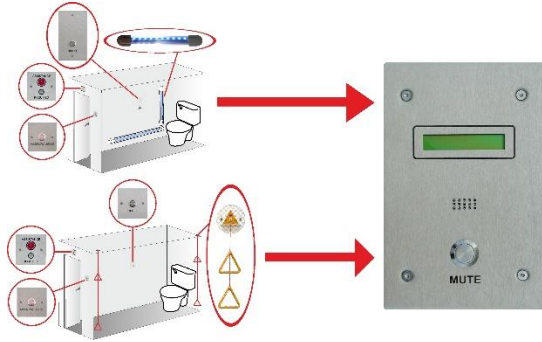
### RANGE OF STRIPS

We offer a range of colours, illumination, IP rating and wheelchair resisting designs to suit your requirements.



## 5 MONITORING OVER DEDICATED CABLES

Ensuring alarms are noticed and responded can be a real problem in some environments, e.g. noisy shops, factories, etc. or seldom used quiet corridors, stairwells etc. For this reason Folknoll offer remote monitoring, bringing the alarm to where people will notice them.



**Tough vandal resistant panels  
(Can be installed in public areas)**

**Audible alert and alarm source indication**

**Optional alarm acknowledge / mute function**

**Optional fault monitoring**

**Ideal for larger sites**

### SIMPLE MONITORING

Simple monitoring using indicator panels with sounders to alert staff. These can be mounted in reception areas or anywhere that is permanently staffed to ensure the alarm is noticed. We offer a range of standard and custom LED panels to suit requirements.

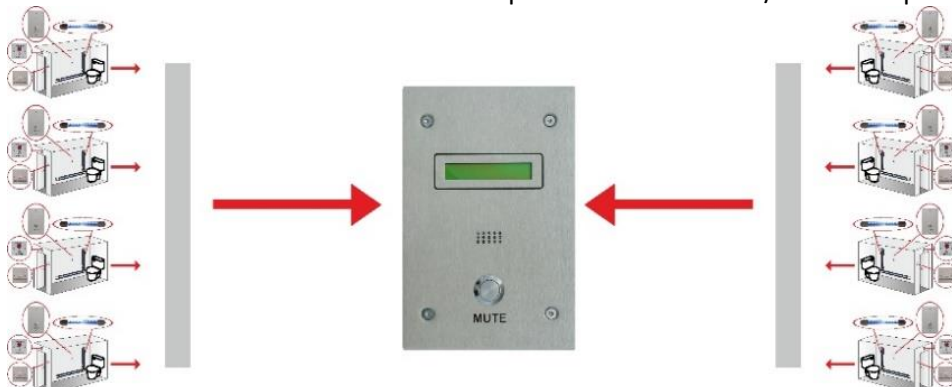


### FULL FEATURED MONITORING

We offer a range of LCD and panels for remote monitoring of any of our disabled toilet alarms. The panels have a built-in sounder to alert staff and report the source of the alarm on the LCD. Options include mute, acknowledge / accept buttons, keyed switched, additional beacons/sounder, etc.

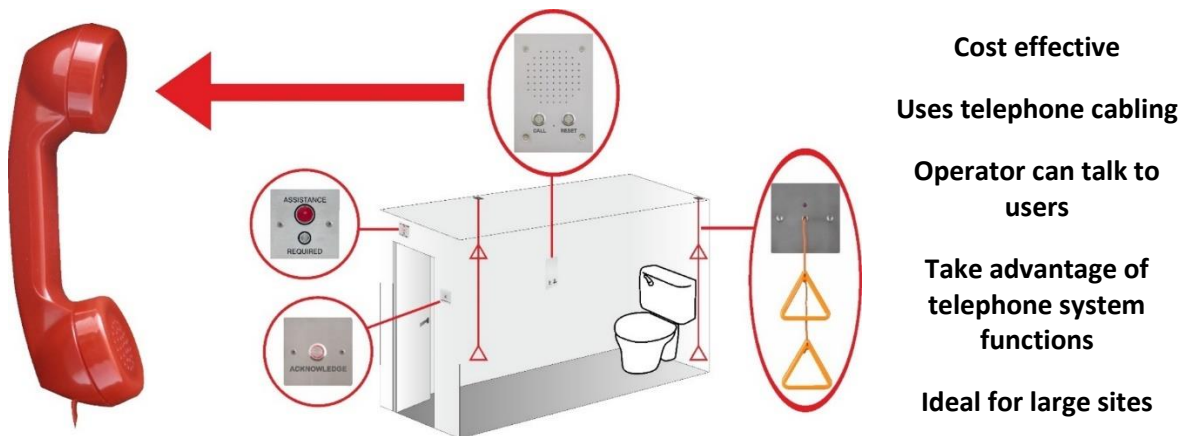
### EXTENDED MONITORING

Remote monitoring systems can be extended and cabling simplified using our IO controllers. These act as alarm concentrators and also have outputs for local beacon / sounder operation etc.



## 6 MONITORING OVER TELEPHONE NETWORKS

Take advantage of existing telephone systems to save cabling and gain PABX functionality.



### AUDIO COMMUNICATION

Alarms systems are cabled to the nearest telephone network access point. If the call button is pressed or an alarm is activated, the reset unit dials the monitoring station to alert the operator. If the user is able to speak he/she can explain their situation to the operator. The operator is then able to arrange an appropriate response, increasing the effectiveness, improving user experience.



### SAVE ON CABLING, MAXIMISE FEATURES

Using the existing telephone network, reduces cabling costs, disruption etc. and enables use of telephone facilities, call forwarding, recording etc. Calls can be made offsite, or to mobile phones held by ground staff.

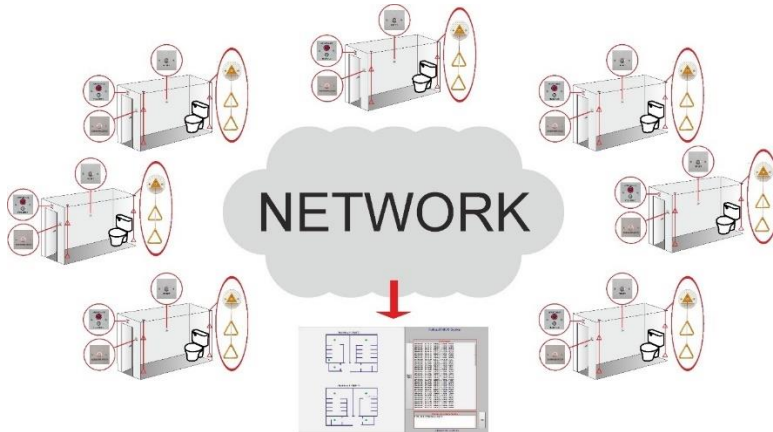
### EASY EXPANSION

Each toilet is an independent system, additional toilets can be added without extra control equipment or configuration, simply plug into a telephone socket.



## 7 MONITORING OVER IP NETWORKS

Leverage existing network infrastruact to save cabling, access awkward locations etc.



**User existing or dedicated network**

**Add alarms to existing system**

**Construct new systems with minimal cabling**

**Ideal for large sites, or multiple locations**

**Folknoil NIOS workstations**

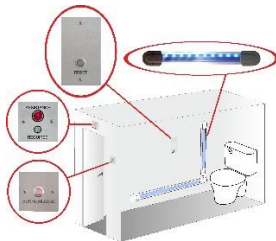
**BMS interfaces**

### LARGE SYSTEMS

Ideal for large buildings or multi-site establishments with centralised or off-site facilities management / monitoring.

### COST-EFFECTIVE

Take advantage of your existing infrastructure to provide monitoring of alarms throughout your site. Saving on cabling and installation costs and conforming with modern building cabling practice.

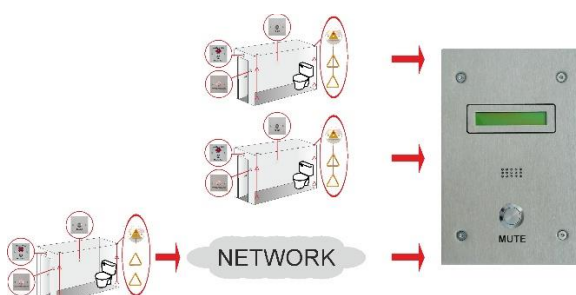
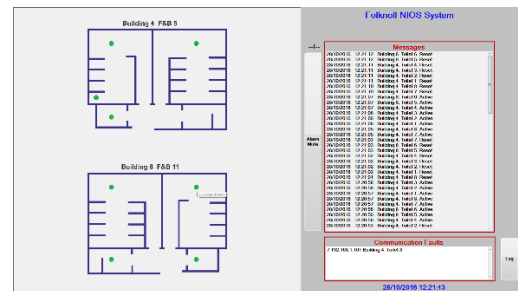


### COMPATIBLE

Network monitoring can be added to any of our toilet alarm systems including basic, enhanced, and alarm strip systems.

### FULL SYSTEMS

We offer a range of IP interfaces, networked PC workstations, event logs PCs, and other network devices to realise solutions.

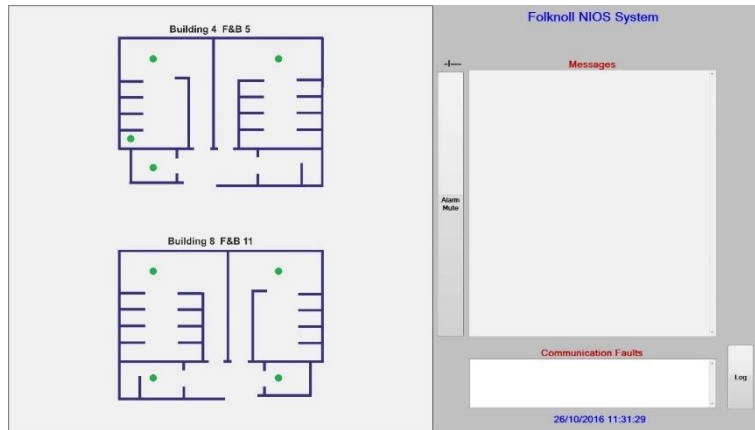


### EXTEND TRADITIONAL CABLING

We also use IP infrastructure to extend existing systems, e.g. adding a new toilet, 'hopping' between buildings, etc.

## 8 NIOS NETWORK MONITORING SOFTWARE

Our network monitoring software provides a plan based workstation, with alarm source indication, event logs, fault reporting and other configurable features. Ideal for larger locations and specialist systems.



- Graphical alarm source indication**
- Alarm status list**
- Audible alert**
- Fault monitoring**
- Event Log**
- Standard PC hardware and Windows® operating system**

### NIOS

Our NIOS PC Workstation enables operators to monitor remote disabled toilet system alarms and faults over standard IP networks.

### ALERTS

The workstation alerts operators to alarms by generating a warning tone and indicating the source of the alarm on a site plan. Enabling an efficient response to activations.

### ACKNOWLEDGE / ACCEPT

The acknowledge function allows local or remote devices to 'accept' and temporarily mute alarms, giving reassurance that help is on its way and making verbal communication easier. If the alarm has not been reset within two minutes the alarm is reactivated. The workstation cannot usually be used to reset alarms. Disabled toilet alarms should only be reset at the toilet 'reset unit' to ensure staff attendance in the event of an alarm activation.

### FAULT MONITORING

NIOS provides network and communications fault reporting to aid maintenance and help ensure reliability. NIOS also reports toilet alarm cabling faults etc. when used in conjunction with our enhanced reset / controllers.

### EVENT LOG

All alarms and faults are recorded in an event log which can easily be viewed on the workstation.

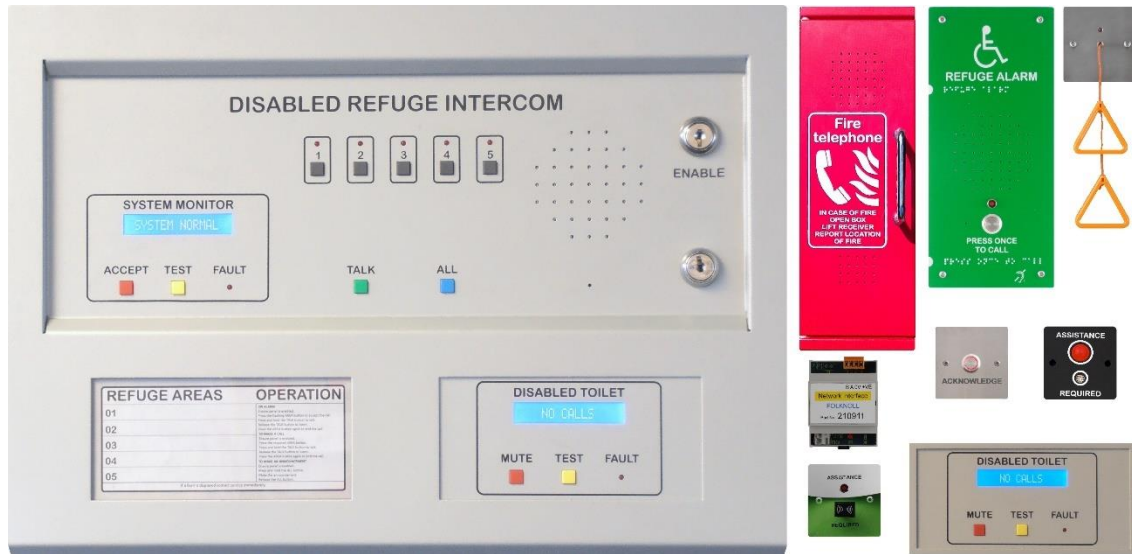
### CONFIGURATION

The workstation is supplied fully configured for your application. If changes are required for maintenance etc. they can be easily effected using the built-in configuration pages.

### BMS

The NIOS application offers an output stream for 3rd party systems, enabling our disabled toilet alarms to be incorporated into BMS and other systems.

## 9 COMBINE DISABLED TOILET AND OTHER SYSTEMS



### COMBINED SYSTEMS

Combining systems reduces control room space, cabling, installation costs etc. whilst simplifying operation and maintenance. Enabling the provision of practical, cost-efficient, BS compliant systems. Ideal for smaller buildings and complexes.



### POSSIBLE COMBINATIONS INCLUDE

Disabled refuge EVC, disabled toilet alarm, fire telephone and building alarms system. All systems are monitored from a single master station.

**All your monitoring in one place.**

### SINGLE FIRE PANEL SIZED ENCLOSURE

All control boards, PSUs, batteries etc. mounted inside the monitoring station. Only mains and outstations, alarms etc. required for a complete system.

**Saves money, installation costs, space etc.**



### MONITORING KITS

We also offer remote panel kits that can be built into panels, consoles and other enclosures.

**Add disabled toilets and other alarm monitoring to 3<sup>rd</sup> party systems.**

