



PENNSYLVANIA CASTLE ESTATE

*Isle of Portland*

[www.thepenn.co.uk](http://www.thepenn.co.uk)



PENNSYLVANIA  
CASTLE

W E D D I N G S   &   E V E N T S



Photo by Ed Peers

## At Pennsylvania Castle we aim to make your stay the most luxurious experience possible.

Set on the cliffs of Dorset's dramatic coastline, Pennsylvania Castle is an exclusive wedding and events venue. The neo-gothic design effortlessly combines intimacy, elegance and grandeur on a stunning estate that has inspired writers and hosted royalty for more than two centuries. The Penn offers a unique experience showcasing the beauty of the Jurassic Coastline.

Being part of an Australian leisure group, we know how to entertain in a welcoming environment offering a tranquil escape from the pressures and pace of day-to-day life.

With luxurious beds, beautiful bedrooms and enough peaceful living space to lose yourself in, The Penn provides an impressive 'retreat' with endless opportunity

The Castle is located on the Isle of Portland which forms the southernmost point of the county of Dorset, England and is 4½ miles long by 1¾ miles wide. The principal rooms look out across the rugged UNESCO World Heritage listed Jurassic Coast and along the English Channel towards St Alban's Head and the Isle of Wight.





Photo by Ed Peers



Photo by Peppermint Love Photography







Photo by Linus Moran

## HERITAGE

Sitting above Church Ope Cove in Wakeham, The Penn overlooks the early landing place of the Romans and Vikings. It was built in the lee of Portland where the first islanders settled with their fishing boats on the beach and built homes and churches.

The Castle was commissioned in 1797 by John Penn, governor of the Isle of Portland and grandson of the founder of Pennsylvania, USA. Designed by John Wyatt and built from the island's famous limestone, it was finished in 1800 and opened by Princess Elizabeth, daughter of King George III.

Since then, it has served as a wedding anniversary retreat for the King and Queen, provided the setting for Thomas Hardy's love story *The Well Beloved* and hosted preparations for the D-Day landings.

After being a hotel and private residence for many years, The Penn has now been made available to rent for holidays, conferences, weddings and other special occasions. In recent years it has been the hideaway for Hollywood stars and royalty, hosted famous entertainers, and appeared on film and television.









## GARDENS

The Castle grounds include several individually themed areas, each one offering a different setting for your event.

The manicured Italian Gardens & the romantic English Rose Garden provide a classic setting for photographs and enjoy the best of the evening sunshine for after dinner cocktails and garden games.

The private pathway to the Penn's waterfall boasts a wooden Japanese-style tea house and a tropical garden providing an alternative but equally impressive photo backdrop.

Whether you want to find a corner for quiet meditation or yoga, the gardens provide many locations to unwind.

To the west of the Castle is our private Helipad lined by mighty oak trees.

Beyond the Castle grounds a path passes the ruins of the ancient 12th-century church of St Andrews and descends to Church Ope Cove, a picturesque and sheltered beach. At the cliff edge of Church Ope Cove stands what remains of Rufus Castle, the oldest castle on Portland



Photo by Peppermint Love Photography



Photo by Peppermint Love Photography









## W E D D I N G S

Your wedding at The Penn can be as individual as you are, with a team that provides a genuinely personalised experience with a seamless level of attention to detail.

From the very first meeting until you leave as newlyweds, your personal Wedding Coordinator will support you every step of the way.

Before the celebrations officially begin there is the opportunity to create a private suite of bedrooms within the Castle, where the bride and her bridesmaids can meet with their chosen make-up artists and hairdressers, so that you may prepare for your big day in relaxed luxury, totally undisturbed by other guests.





Should you wish to be married at the Castle, your ceremony will take place in your choice of licensed rooms including the elegant Library, Conservatory, Drawing or Dining Room. Alternatively, vows may be taken in the garden, offering additional space and spectacular views of the sea as a backdrop to your nuptials.

The Penn has developed successful relationships with high-end local suppliers, including caterers, florists and event professionals. You can choose anything from an indoor feast to an outdoor barbecue and, our experienced partners will deliver an unforgettable experience. Your Wedding Coordinator will guide you through all your options.





Dining at The Penn is an important part of your wedding day and where you choose to hold your wedding breakfast will depend on your guest numbers and the time of year. During July and August, we cover our indoor swimming pool, transforming it into a sea-facing Orangery-style banqueting room that seats up to 100. For larger numbers, there are several Marquee options that can be sited on the Penn's Helipad.

Evening celebrations can take place in the Dining Room until 11pm. You can choose to use The Penn's own licenced cash bar or you may bring your own drinks to be served throughout the day.









We pride ourselves on offering a bespoke wedding service to ensure your wedding day is exactly as you've dreamed of. For those looking for more inspiration or perhaps something a little unusual, our wedding experiences provide a host of suggestions.

Our Twilight Wedding option offers the most romantic of settings for your wedding ceremony in the candle-lit gardens of the Castle, leading onto a casual reception, creating an enchanted and intimate backdrop. Think cosy blankets and festoon lighting. Alternatively Wed Me On A Wednesday provides a midweek wedding break for those not tied to a particular weekend date or Marry Me In May for those looking for a spring wedding. Petite Penn Weddings are designed for those more intimate wedding parties where exclusivity is key for the most select guest list.

Whatever you choose, you will be reassured by your dedicated wedding coordinator's seamless support.

Nobody wants their perfect wedding day to come to an end, so when the time comes for you to leave Pennsylvania Castle as husband and wife, an idyllic honeymoon is the perfect way to extend your celebration. A helicopter can be arranged to take you from the Castle to the international airport of your choice. Perhaps from one UNESCO World Heritage site to another and our sister resort Orpheus Island on the Great Barrier Reef will provide you with the tropical honeymoon of your dreams following your fairy-tale Castle wedding.

[www.orpheus.com.au](http://www.orpheus.com.au)









WEDDING TARIFF

July & August c.100 guests	Ceremony Only (Monday - Friday)	Reception Only	Ceremony & Reception
2018	£2,690	£8,600	£9,675
2019	£2,770	£8,855	£9,965
2020	£2,850	£9,115	£10,255
January to June September to December c.60 guests	Ceremony Only (Monday - Friday)	Reception Only	Ceremony & Reception
2018	£2,150	£6,450	£7,525
2019	£2,215	£6,640	£7,750
2020	£2,280	£6,835	£7,975
Wedding Night Accommodation in 9 bedrooms	1 Night	2 Nights	3 Nights
2018	£2,500	£4,000	£5,500
2019	£2,575	£4,120	£5,665
2020	£2,655	£4,245	£5,835
Additional nights available on request			
Wedding Experiences	Twilight Weddings	Wed Me On Wednesday	Marry Me In May
2018	£7,800**	£11,300**	£11,800**
2019	£8,000**	£11,800**	£12,300**
2020	£8,300**	£12,300**	£12,800**
All prices correct at time of going to press			

What's Included?

- \* Exclusive use of Castle & Grounds
- \* Provisional booking of the Registrar for your ceremony.
- \* Tables & Chairs for Ceremony and Wedding Breakfast
- \* Easel for Table Plan
- \* Lawn Games
- \* Complimentary parking for up to 30 Cars
- \* Helicopter Landing Facilities
- \* Optional Ceremony Rehearsal
- \* Use of Portable Bose Music System for Ceremony & Drinks Reception and Surround Sound Music System in the Orangery
- \* Dedicated Wedding Coordinator from initial viewing to your wedding celebration, to assist in planning and scheduling and provide on the day coordination and Master of Ceremonies services if required

\*\* Catering for 60 guests included in Example Wedding Experience Prices

Payment Schedule

10% deposit on booking  
50% payment six months prior to wedding  
40% payment one month prior to wedding  
All payments are non-refundable and subject to VAT at the standard rate.  
Refundable damages deposit: minimum £1,000





## PARTIES & EVENTS

Pennsylvania Castle is the perfect venue for all occasions. From celebrating a special birthday or anniversary, reuniting with family and friends or hosting one of life's milestone events.

Your options for parties and events are endless. As with all our hires at the Castle we like to start with a blank canvas and build your event around you, whether providing the very best in entertainment or dressing the Castle for your elaborate celebration. For those looking for a

more themed event, previous stylings have included Great Gatsby dinner parties, murder mysteries, Chinese celebrations and dancing dragons, we've even transformed the Library into a cocktail style bar with live music provided by international stars. Whatever your inspiration, the Castle is historic yet modern enough to host it all.

For a bespoke quote, for your special occasion, please contact the Penn Estate Team.









## ACCOMMODATION

Accommodation in the Castle is spread over two floors, allowing you to choose between nine distinct but complimentary en-suite bedrooms for up to 20 guests. Our Courtyard rooms provide perfect accommodation for additional guests, a private chef or additional staff to support your stay.

\* Please note that additional accommodation is available elsewhere on the Estate, as detailed in our accommodation brochure.

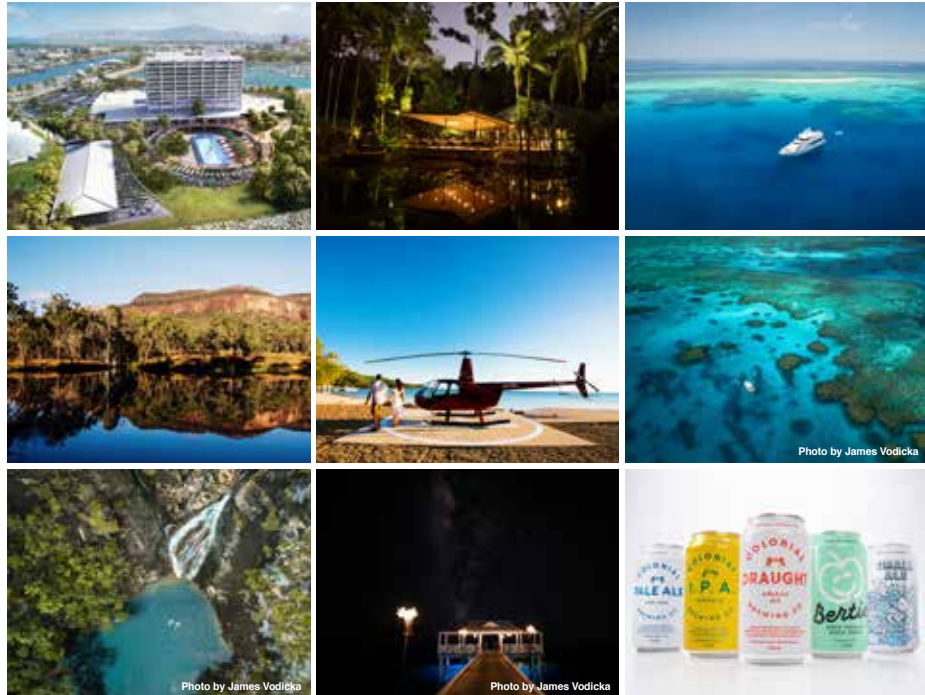












Colonial Leisure, owners of Pennsylvania Castle Estate, is part of The Morris Group, an Australian company based in Melbourne. The company has diverse interests spanning the hospitality, technology, agriculture, food and aviation industries in Australia and the UK. The Morris Family Foundation is a charitable fund that gives to projects in international development, health, social welfare and sustainable food systems.

—  
Morris Group [www.morrisgroup.com.au](http://www.morrisgroup.com.au)

Colonial Leisure Group [www.clg.com.au](http://www.clg.com.au)

Orpheus Island, Great Barrier Reef [www.orpheus.com.au](http://www.orpheus.com.au)

Daintree Eco Lodge, Queensland [www.daintree-ecolodge.com.au](http://www.daintree-ecolodge.com.au)

The Ville, Townsville [www.the-ville.com.au](http://www.the-ville.com.au)

Nautilus Aviation [www.nautilusaviation.com.au](http://www.nautilusaviation.com.au)

Tangible Technology [www.tangible.tech](http://www.tangible.tech)

Morris Family Foundation [www.morrisfamilyfoundation.org.au](http://www.morrisfamilyfoundation.org.au)