

Winter 2015

PERRY COMMON MATTERS



Message from Santa

Ho-Ho-Ho - hello to everyone.

It was wonderful to be invited to your 'Christmas On The Ring' event. It looked like everyone was enjoying themselves. So many of you came and said hello. What good girls and boys you are.

You have all been very busy indeed. Creative Moments have made a wonderful job creating a beautiful commemorative tapestry; the wildfowl at Witton Lakes now have a safe home, thanks to 3 new nesting rafts, and what's this I hear about all those exciting community events this year? I wish I could have come to these - but I hear that you have lots more planned for 2016.

My reindeer will be pleased to see lots of lovely green space in Perry Common and look at all the environmental projects going on. Then in the New Year, there are activities to help to make those New Year's resolutions come true - ho-ho-ho.

With all this good work, Rudolf and I will be very busy in Perry Common on Christmas Eve; and I now have 59 lovely new houses to deliver to.

Don't forget to leave me a mince pie and a carrot for my reindeer. I must go now because I have lots of work to do for Christmas, but just to say - keep up the good work everyone!

Have a very Merry Christmas and a Happy New Year; ho-ho-ho, ho-ho!

from Santa



Christmas on The Ring

Hundreds of people got into the festive spirit at 'Christmas On The Ring'. With carols and festive songs by the Story Wood School Choir and Ring Of Sound Choir, hot food, craft fayre, Christmas Hamper prize draw, festive activities and not forgetting, Santa Claus himself; there was something for everyone.

The weather stayed dry and it looked as though everyone enjoyed themselves.

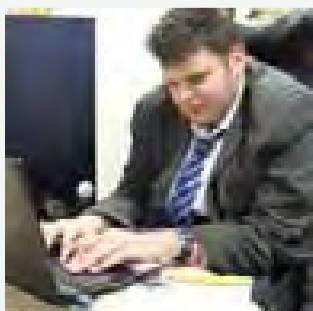
Thank You to all who helped make the event special.

Please turn over to Page 2 to see this year's winning Christmas Card design.

IN THIS ISSUE



A Royal End To The Year
Page 2

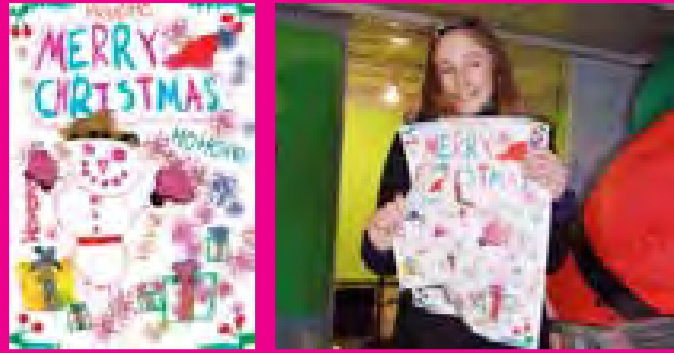


A Fantastic Year For Boosting Skills, Training and Employment
Page 6



What's On In Perry Common In The New Year
Page 8

LAUREN'S WINNING CHRISTMAS CARD DESIGN



Congratulations to Lauren Mullan, age 11, from Story Wood School, who is this year's winner of the Witton Lodge Community Association Christmas card design competition. Residents of Sycamore Court voted for their favourite card and Lauren's design was chosen.

Congratulations Lauren – and well done to all the other children who put forward their designs.



Royal End To The Year

2015 has seen not one, but two, Royal occasions for Perry Common residents. On Thursday 19th November, 4 year old Taahila had the honour of presenting Her Majesty the Queen with a bouquet of flowers, when she and the Duke Of Edinburgh visited Birmingham to view the new Midland Metro tramway extension, after opening Grand Central.

This followed a Royal engagement with Prince Charles, at St James's Palace, where Witton Lodge Community Association's Chair, Linda, and Chief Officer, Afzal, met the Prince to discuss the future of housing and communities.

Two very proud Royal occasions for Perry Common indeed.



Bringing The Past To Life with Perry Common and Me

What a year it's been for discovering the amazing heritage we have here in Perry Common – and at the same time celebrating our thriving community today and exciting future ahead.

What with tea dances, heritage exhibitions, guided tours and archaeological digs, there has been something for everyone to enjoy.

We have had a fantastic response to our call-out for interesting materials: with photos,

historic newspapers and historic items alongside personal memories shared. But we are always after more, if you have anything of interest, please get in touch.

Patrice Johnson, Perry Common and Me Project Coordinator, has been out and about recording all this information and is making sure that the history and information about the area, as it is today, is preserved for future generations.

All Singing All Dancing At The Perry Tea Dances

A Tea Dance at St Martin's Church Hall was held, which we thought was a fitting way to start the Perry Common and Me heritage project.

This event was a roaring success, with over 70 people coming through the doors to enjoy the live music, provided by Graham Darby and be shown all the moves on the dance floor by Peter Martin – ex Dance Champion and his dance partner Denise.

The afternoon cream tea gave everyone that sugar boost of energy to 'dance the afternoon away' and there was time to have a good look at the 'Perry Common Story' exhibition – with a wide selection of photos and many historic items on display.

With the success of the first Tea Dance, Witton Lodge Community Association and St Martin's Church were inspired to host two more. A well attended event was held on Thursday 4th September and another to commemorate Remembrance Day in November.

Keep looking out for the date of the next Tea Dance, on our website, social media and notice boards.



A New Resident Swoops Into Perry Common

We are delighted that Perry Chocobow Swanet, or 'Perry The Owl', as we like to call him, has decided to make Perry Common his new home.

Perry was designed by local artist Lawrence 'Log' Roper who worked with local residents and schoolchildren to showcase the history and modern-day community of our area by painting Perry. Along with many other owls placed all around Birmingham, these were sold to raise money for Birmingham Children's Hospital as

part of the Big Hoot project.

Witton Lodge Community Association has bought Perry so that he can stay in the area and be enjoyed by everyone locally.

He is currently resident outside our office at Perry Common Community Hall near The Ring – and joins his friend 'Bully', our life-size prototype of the Bullring Bull.

Come along and say hello.



Digging Into The Past

The rain failed to dampen spirits for a team of enthusiastic local residents and schoolchildren for a full-scale heritage archaeological dig.

The raincoat and wellington-boot wearing local residents and 15 adventurous schoolchildren from Story Wood School got their hands dirty – not to mention their feet – looking for items of historical importance – near to the Hawthorn Brook, which runs alongside the recreation ground near Dovedale Road.

The group were given a very interesting talk about the dig by experts from Archaeology Warwickshire and were shown historic artifacts, shown how to dig correctly and what to look for.

Although an Anglo Saxon fishing weight had been found in a back garden of a house in Dovedale Road in the 1950s, sadly no ancient items were found during the day.

The group did however find a Victorian land drain (believed to have been installed by the farmer of Witton Lodge Farm) and a good selection of other interesting items.

Still, everyone really enjoyed themselves and it was a great experience!

Your Chance To Get Involved

If all this sounds really interesting, then it's your ideal opportunity to get involved. This is a great opportunity to learn new heritage skills and to bring your memories and enthusiasm to the project. Why not get in contact and learn new skills in the following areas in a really fun and enjoyable environment, including:

- Archive Training
- Handling Historical Artefacts
- Oral History (interview skills and making podcasts)
- Photography
- Scanning
- Social Media and Publicity
- Working with schools and different age groups
- and much more

This really is a rare opportunity to learn very useful and specialist skills from people with knowledge and experience.

Please call Patrice Johnson, Perry Common and Me Project Coordinator, on 0121 382 1930, Mob: 07496 879842 or email Patrice.Johnson@wittonlodge.org.uk.



CREATIVE MOMENTS ♦ COMMEMORATING HISTORY



Local creative ladies 'Creative Moments' have been busy working on their latest masterpiece: an 8 metre by 1 metre artwork to commemorate the history of Whittington Barracks, near Lichfield.

The tapestry was designed by talented local artist Phillipa England, who worked with the military, local schools, groups and individuals; many joining in through social media, to suggest ideas and plan the project. Phillipa led the design team with workshops held at Birmingham City University, the National Memorial Arboretum and the Staffordshire Regimental Museum to produce this stunning masterpiece.

The awe-inspiring creation was made using a wide variety of techniques and materials including former military uniforms. The border is composed of 140 individual squares comprising images

linked to the participants and sponsors. There are almost 700,000 stitches in the border alone!

It will be seen by everyone who enters the building and is also visible from outside. It will be included in the Staffordshire Regimental Museum's guided tours of the Barracks.

The project has proven to be another huge success for Creative Moments and we're all looking forward to see what wonders they will be creating in 2016.

**For further information contact Lesley at: creativemoments@outlook.com
www.facebook.com/creativemoments3
www.facebook.com/whittingtontapestry**

Spring Into Summer

Wonderful summer weather saw a great turnout on Saturday 18th July for the 'Spring Into Summer' festival.

With fun inflatables for the children 'and big kids too', music, stalls and lots more – there really was something for everyone.

There were lots of excited people sitting in Perry Barr Fire Station's fire engine, the local police team were discussing what they do and Urban Devotion had their football cage and activities – which scored lots of points with visitors!

We're hoping the weather is as good when we host 'Spring into Spring' next year.



Celebrating Community Life in 2015

Wyrley Festival Of Fun

It was great to see over 600 people coming into Witton Lakes: taking the 'activity walk' and visiting the Festival Area, Velvet Community Orchard and Lakeside Children's Centre – just over the road from the park in Wyrley Birch.

This is the first event where we have had donkey rides, which everybody loved – and I think we will be seeing them again! There was the ever popular mega slide, fire engine, climbing wall and hot food too – so definitely something for all the family!

Being Witton Lakes, it would have been a shame not to make the most of the water, so there was kayaking on the lakes which was a big hit with visitors.

It looked like everyone had a great time!

Quiz Nights

Quizmaster John 'Finance Officer by day and quizmaster extraordinaire by night' has been doing a great job, getting all our brains working at the Perry Common Quiz Nights – mostly held on the last Friday of each month at Perry Common Community Hall.

Things have been getting very competitive, with teams of up to 6 people battling it out to win cash prizes and enjoy a Fish & Chip Supper; ideal brain food to get those little grey cells working – and above all, having fun.

Keep looking out for the dates of Quiz Nights in 2016.



Enderby Park Fun Day

There had been no excuse for anyone to be stuck indoors this summer – and lots of local people got out there and enjoyed the activities at the 'Enderby Park Fun Day'.

The 10ft climbing wall was very popular, as was the 'messy play', a chance to play steel pan drums, go on the bouncy castle and lots more.

The day was organised by the Friends of Perry Common, who teamed up with Birmingham Play Care Network. It was a great day and a very good way to promote the use of one of Perry Common's many green spaces.

Keep looking out for the next Enderby Park Fun Day in Spring.



£464 Raised At MACMILLAN Day

This year Witton Lodge Community Association decided to hold a complete day of fundraising events to raise money for Macmillan Cancer Support.

As always, local people were extremely generous and we are delighted to announce that £464.37 was donated to this very good cause.

Slimming World baked 'healthy' cakes and we had a Macmillan Tea Afternoon with scones and clotted cream alongside an array of homemade cakes. These included a beautiful Victoria Sponge, chocolate filled cupcakes and a beautiful Cypriot Sponge Cake flavoured with rosewater. Of course, there was a raffle and very happy prize winners taking home a selection of prizes – all generously donated.

All this fun was followed by a very enjoyable Quiz Night at Perry Common Community Hall.

A SPECIAL MENTION goes to energetic local resident Linda Hackett, Walk Leader of the Red Hot Chilli Steppers Walking Group; who raised a whopping £264.00 by doing a sponsored 4 mile walk around Perry Common, Witton Lakes and Brookvale Park.

Great work Linda and Thank You to everyone who donated and supported this very good cause.



Spooky Going's On At The Orchard

Green fingered crowds have flooded into the Velvet Community Orchard at Witton Lakes – with over 800 people coming through the gates to the very popular open days this year. Each of the afternoons has had its own theme, depending on the time of year.

The Halloween Afternoon held on Saturday 31st October saw lots of spooky children's crafts, chocolate dipped apples (from the orchard's

very own fruit trees) and pumpkin carving – with helpful advice on what to do with all that tasty filling afterwards. Bon appetite!

An exciting programme of events is planned for 2016 by the Friends Of Witton Lakes. Keep looking out for details at www.facebook.com/FriendsofWittonLakes and local notice boards.



SAFE AS HOUSES! £400 Raised For Rafts To Keep Birds Safe

Thanks to the generosity of local people and businesses, the waterfowl at Witton Lakes now have a safe place to lay their eggs and call their home.

3 newly launched rafts now provide a safe place for the birds to lay their precious eggs, in the middle of the lake, away from predators.

This was urgently needed as the birds had been laying their eggs at the side of the lake, right next to the public footpath. Sadly, in such an exposed spot, the eggs were broken or stolen, and mothers lost a lot of their young.

Money for the first raft was donated by Wheelers Timber Merchants, who very kindly installed it too. The second raft was sponsored by the Friends Of Witton Lakes, with money collected from the local community at Orchard Open Day events throughout the year. Local residents Kathryn Berry and John Harper very generously donated the third raft.

To date, 4 cygnets and 3 goslings have been born due to the safety of the rafts.

Once again, Thank You to everyone who has generously donated and we will keep you updated with developments in the Spring.



More Environmental Awards for Witton Lodge

Witton Lodge Community Association is delighted to have won two awards in the space of two months, for our environmental work.

In November we won the 'SE Planet' award, which was awarded by Social Enterprise West Midlands at the University Of Birmingham. We were shortlisted alongside 6 other organisations.

Then in December, we were announced as the proud winner of the 'MEBC Sustainability Award', being shortlisted alongside West Midlands Safari Park, Opus and Warm Zones. This award was presented by Veolia, at an award ceremony held at Birmingham Council House.

These awards are in recognition of the work and support of the local community, partners and volunteers, whose enthusiasm is really making a positive difference environmentally in Perry Common. A big Thank You for this – and we look forward to the exciting plans ahead for 2016!



NEW HOMES AND EXCITING PLANS IN PERRY COMMON

We can now announce the exciting plans for the development of the final building phase in Perry Common.

The large site stretching along the length of Dovedale Road – from Witton Lodge Road to Perry Common Road - opposite the Dove Medical Centre, will be transformed with 146 new homes being built.

This will also include the re-landscaping of the neighbouring recreation ground, creating 19.14 acres of improved parkland, with new pathways, trees

and environmental features, including swales and balancing ponds to help water drainage in the area.

When finished, Perry Common will have an impressive 27 acres of green space for everyone to enjoy. A further 20 new homes have also been announced to the site adjacent to Enderby Park, known as 'The Balcony'.

Keep looking out for more details on this in the new year.



Welcome To Your New Home

59 new families, who now call Perry Common their home, received a warm welcome to the area this autumn.

Following the completion of 39 new homes for Birmingham City Council and 20 for Witton Lodge Community Association, a 'Welcome To Your New Home' event was held at Perry Common Community Hall. This was an excellent opportunity for our new neighbours to meet each other, learn about the area and hear about the wide range of clubs, activities and events that take place every week at Perry Common Community Hall and other venues around the area.

There was a presentation about the history of Perry Common and the tremendous changes the area has seen, while Erdington MP Jack Dromey provided a fitting tribute to the area and met the new residents. Our local councillors, representatives from Birmingham City Council and local organisations also came along to extend their warm welcome.

One very happy new resident, Miss Downey, commented: *"I am delighted with my new house. I had moved here from a property that was in poor condition and I had a lot of problems with my last landlord. This house is lovely and there is a big garden for the children to play in"*.



The Hanging Gardens Of Perry Common

Witton Lodge Community Association has been busy this summer with all sorts of green activities.

To make our neighbourhood even greener than it already is, we had great fun planting hanging baskets with local residents, providing free plants, baskets and brackets.

Keep looking out for more green activities planned in the Spring.



A Fantastic Year For Boosting Skills, Training and Employment

2015 has been a busy year for helping local people secure employment, improve workplace training and enhance those money management skills. So far this year, Witton Lodge Community Association has helped 249 local residents improve their skills and prospects of finding work.

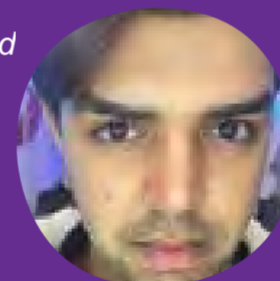
A Major Boost For Local Employment

Since July, Witton Lodge Community Association has helped 21 local people to successfully boost their employment skills. ProSEED, our 'Professional Skills, Employment and Enterprise Development Hub' is a completely FREE and impartial service to provide employment related advice for local people. The wide range of services available includes:

- ✔ Job Search
- ✔ Universal Job Match Account Creation (finding jobs with the Job Centre website and other providers)
- ✔ Completing application forms, CV writing and covering letters
- ✔ Mock interview support
- ✔ Work Experience (help getting voluntary work opportunities)
- ✔ Building a professional image to build a successful career

Balal, age 22

"After getting my degree in Media and Communications, I was at a standstill because I did not have any work experience to get a paid job. The experience I gained in such a short time will forever be valuable to me when moving forward with jobs and I will always be grateful to all the staff at Witton Lodge for welcoming me with open arms."



Improving Local Skills With Training

Witton Lodge Community Association has been awarded funding by Birmingham City Council to deliver a mentoring programme for Year 11 students in local schools as part of the 'Youth Peer Mentoring Programme'.

Our 'Youth Employment Ambassadors', Haleema and Jess, are working with these schools to provide local young people information, advice and guidance on their career choices.

It is always better to have Group Leaders who have been through a similar situation.



Free Money Management Advice

Managing your money has just been made easier.

If you feel you are losing control of your finances, worried that your spending is too high, want to get your finances organised for the New Year or simply want to ask a few questions; this is the opportunity to do so. It's also completely FREE and you will be able to speak to an expert from the Money Advice Service.

This is a free and impartial service set up by the Government. Customers can benefit from confidential face-to-face advice on a range of areas including:

- ✔ Taking control of debt
- ✔ Planning your finances and budgeting
- ✔ Advice on how to save money
- ✔ Checking your benefits entitlement
- ✔ Retirement planning

To book an appointment, pop into our office at Perry Common Community Hall, call Iram on 0121 382 1930 or email Iram.Fardus@wittonlodge.org.uk.

Cara, age 22

"I recently moved to Perry Common. The Money Advice Service has helped me take control of my finances which is helping me manage my home and look after my daughter. The service has given me confidence to manage my money now and plan my future career. I would recommend this service to everyone."

URBAN DEVOTION BIRMINGHAM: DECORATING PERRY COMMON

URBAN DEVOTION BIRMINGHAM continue to support children and young people across Perry Common - helping them discover their incredible

potential and realise that they are people of significance who can make a difference to the people and places around them.

One of our highlights this year has been renovating the Underground Youth Centre next to St Martin's Church, transforming it into a bright, warm and welcoming space.

Come and have a look sometime. We've also loved working with the community in Wyrley Birch with one of our favourite projects being the creation of a giant community mural on the walkway from North Birmingham Academy.

From The Urban Devotion Team



A Work Placement For Volunteer 'Will'

Volunteering can really improve your chances of getting a paid job and looks great on your CV too. It can be a really rewarding and enjoyable experience.

This is the case for one of our volunteers, Will, age 22, who started volunteering with Witton Lodge Community Association earlier this year – as featured in the last edition of Perry Common Matters. With Will's enthusiasm and hard work, he has secured a placement working at our busy office for three days a week. Congratulations Will and keep up the good work!



Sarah Joins Us As Our New 'Health & Wellbeing Officer'

"I joined Witton Lodge Community Association on 16th November as the 16th member of the team. My role will be to work with the local community, to improve health and wellbeing. I shall be busy working on a wide range of projects and have lots of exciting ideas to get everyone involved."

To find out more about the service and how we may be able to help you, pop into Perry Common Community Hall, call 0121 382 1930 or email Sarah.Blackstock@wittonlodge.org.uk.

WHAT'S ON IN PERRY COMMON in the new year

If you have an idea for a group or would like any further information, please contact Kay on 0121 382 1930 or email Kay.Blundell@wittonlodge.org.uk. All activities take place at Perry Common Community Hall unless otherwise stated.

MONDAY

ST MARTIN'S PARENT & TODDLER GROUP 9:30 - 11:30AM

St Martin's Church Hall, 140 Witton Lodge Road, B23 5AP. For children age 0-4 years. First session is FREE then £1.50 per session thereafter. Contact Chris/Ron on 0121 382 7555.

RED HOT CHILLI STEPPERS - WALKING GROUP 11:00AM

This active and friendly group meet at Perry Common Community Hall and take a scenic route through the Recreation Ground, Witton Lakes and Brookvale Park. The group is completely FREE to join and you can do as much or little walking as you like, at a pace that suits you.

THE NET CHAT CLUB 12.00 - 2.00PM

The Net Pentecostal Church, 159 Perry Common Road, B23 5AR. Open to all: coffee, tea, cake and plenty of chat. Please call 0121 373 7406.

TUESDAY

ST MARTIN'S LUNCH CLUB 11:30AM - 2:30PM

St Martin's Church Hall, 140 Witton Lodge Road, Perry Common, B23 5AP. Contact Ron on 0121 382 7555

THE NET LUNCH CLUB 12.00 - 2.00PM

The Net Pentecostal Church, 159 Perry Common Road, B23 5AR. All are welcome, Come and enjoy a two course meal with tea and coffee. Please call 0121 373 7406 as limited places are available.

KICK BOXING 6:00 - 7:00PM

Under age 16 - £4.00 per person per session.

KICK BOXING 7:00 - 8:00PM

Over age 16 - £5.00 per person per session

BOXERCISE 8:00 - 9:00PM

£4.00 per person per session

RING OF SOUND CHOIR 7:00 - 8:00PM

Sycamore Court, 46 Buxton Road, B23 5GA
£1.00 per person per session - under 16 year olds FREE.
Contact Linda Hines on 07960 386252 for more information.

WEDNESDAY

ST MARTIN'S PARENT & TODDLER GROUP 9:30 - 11:30AM

St Martin's Church Hall, 140 Witton Lodge Road, B23 5AP. For children age 0-4 years. First session is FREE then £1.50 per session thereafter. Contact Chris/Ron on 0121 382 7555.

CREATIVE MOMENTS CRAFT GROUP 12:00 - 2:00PM

St Martin's Church Hall, 140 Witton Lodge Road, B23 5AP
£2:00 for members. For more information about joining the group please contact Teresa Compton on 07913 323645.

ZUMBA 6:00 - 7:00PM

£4.00 per person per session.

AIKIDO 7:30 - 9:30PM

£6.00 for persons aged 18 years and over.

THURSDAY

PAIN CLINIC 9:30 - 1:00PM

Please attend via GP referral only.

EXTEND EXERCISE CLASS 10:00 - 11:00AM

Sycamore Court, 46 Buxton Road, B23 5GA
Chair based exercise to music for older people and people who are less mobile. Please contact Chris Poole on 07739 330475 for more information.

FIFTY SHADES OF GREEN GARDENING CLUB 1:30 - 3:00PM

Sycamore Court, 46 Buxton Road, B23 5GA
Lots of green advice, food to taste and hands-on creative activities - all completely FREE.

SLIMMING WORLD 5:00 and 7:00PM

First session starts at 5:00PM / second session at 7:00PM
£9.95 joining fee - then £4.95 per person per session.

FRIDAY

SLIMMING WORLD 10:00AM - 12:00 NOON

£9.95 joining fee - then £4.95 per person per session.

JOB SHOP 10:00AM - 1:00PM

Come into Perry Common Community Hall for FREE employment advice, CV writing, job-search and much more. Please contact Iram on 0121 382 1930 or email: Iram.Fardus@wittonlodge.org.uk.

ST MARTIN'S LUNCH CLUB 11:30AM - 2:30PM

St Martin's Church Hall, 140 Witton Lodge Road, Perry Common, B23 5AP. Contact Ron on 0121 382 7555.

EXTEND EXERCISE CLASS 11:00AM - 12:00 NOON

St Martin's Church Hall, 140 Witton Lodge Road, B23 5AP. Contact Chris Poole on 07739 330475 for more information.

QUIZ NIGHT 7:00PM

The dates of our other Quiz Nights in 2016 are:

-Friday 29th January

-Friday 26th February

A great opportunity to get thinking and have fun at the same time! We also have cash prizes to be won.

Tickets are £5.00 per person (maximum 6 people per team). The ticket price also includes a Fish & Chip Supper and prizes for the winners and runners-up. £2.00 ticket price for the Quiz Only.

Call us on 0121 382 1930 or email John.Smith@wittonlodge.org.uk to book a place.

SATURDAY

BOXERCISE 8:45 - 9:45AM

St Martin's Church Hall, 140 Witton Lodge Road, Perry Common, B23 5AP. £4.00 per person per session.

POLICE SURGERIES

Police surgeries take place every month. These are an excellent opportunity to discuss any issues face-to-face with your local police team. Please keep checking our website, social media and notice boards for forthcoming dates.

COUNCILLOR SURGERIES

Take place each month for

Labour Councillor Des Hughes

(every 2nd Wednesday of the month 7:00 - 8:00pm)

Conservative Councillor Gary Sambrook

(every 2nd Friday of the month 6:30 - 7:30pm)

at Perry Common Community Hall.

FRIENDS OF PERRY COMMON

The group meet at 1.00pm every 2nd Tuesday of the month at St Martin's Church, 140 Witton Lodge Road, B23 5AP. For more information please contact Teresa Compton on 07913 323645.

Focus On

Aikido

Aikido is an enjoyable and exciting way to improve your life, spiritual wellbeing and to look after yourself.

So, the next time you feel forced to choose between fighting back or giving up, remember there is an alternative. Unlike many martial arts, Aikido requires no advantage in strength or speed and is practised successfully by people of all ages and abilities.

- A**dds to your spiritual well being
- I**s flowing, effortless but powerful
- K**eeps you fit and healthy
- I**s extremely effective in street situations
- D**evelops co-ordination, awareness and confidence
- O**ffers fun, friendship and a challenge!!

So, the next time you feel forced to choose between fighting back or giving up, remember there is an alternative. Unlike many martial arts, Aikido requires no advantage in strength or speed and is practised successfully by people of all ages and abilities.



Sessions take place at Perry Common Community Hall Wednesday's 7:30 - 9:30pm. For further details phone SENSEI Noel Fisher 4th Dan on 0121 384 7243.

URBAN DEVOTION BIRMINGHAM

We hold regular weekly term time activities in Perry Common. Most of our activities cost £1 entry with the first time FREE and are held at The Underground, St Martins Youth Centre, Witton Lodge Road B23 5AP.

The Underground (School Years 4-6) - Mon 3:30-4:45pm

The Underground (School Years 7-9) - Mon 5:00-6:15pm

Girls Group (Girls in School Years 6-8) - Tue 4:30-5:45pm

Girls Group (Girls in School Years 9-11) - Tue 6:15-7:30pm

BOOM6 (Boys in School Year 6) - Thur 4:15-5:15pm

BOOM! (Boys in School Years 7-8) - Thur 5:30-6:30pm

Keep up to date with UDB on social media.

urbandevotion @urbandevotion
 www.urbandevotion.org

HIRING PERRY COMMON COMMUNITY HALL

Perry Common Community Hall, Meeting Room and Interview Room are available to hire for groups, private parties and a wide variety of events.

Please contact Kay on 0121 382 1930 or email Kay.Blundell@wittonlodge.org.uk for more information.

