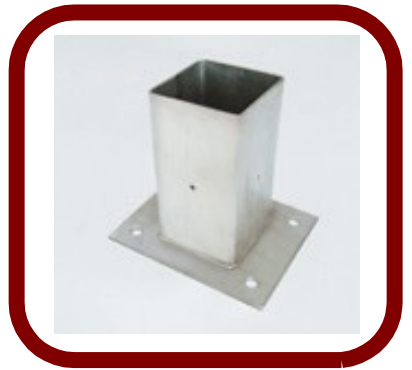


# Electro-Safe GRP Palisade Fencing



- Lightweight
  - Strong and Secure
  - Will Not Rot or Corrode
  - Non-Conductive
  - Transparent to Radio Waves
  - Maintenance Free
  - Designed to BS 1722-12:2006
  - Material Conforms to EN 13706, E17
  - Different Sizes, Posts and Gates
- Many colour options



[www.suregrip.co.uk](http://www.suregrip.co.uk)

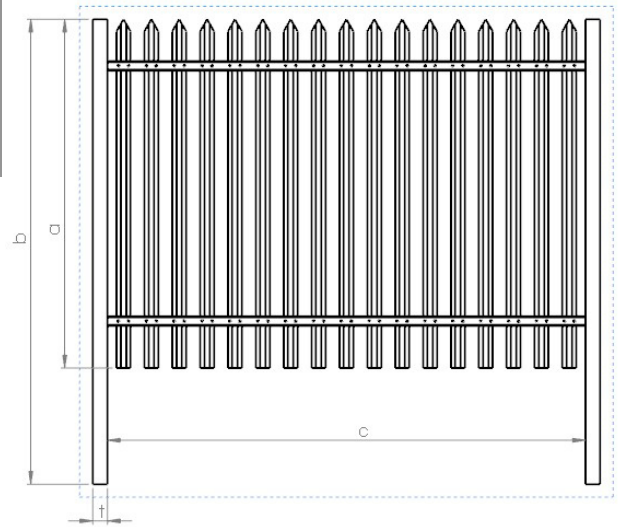
# Electro-Safe

## GRP Palisade Fencing

GRP Palisade Fencing offers a viable alternative to traditional steel fencing which is fast and easy to assemble whilst maintaining the security and strength of steel.

The fencing is manufactured from Glass Reinforced Polymer (GRP) material in accordance with EN 13706, Grade E17. GRP offers many advantages over steel including its resistance to weathering, non conductivity, 50% weight reduction, plus many more!. Please refer to our material benefits chart for further information

| Height (a) (mm) | Post Height (b) / (mm) | *Post Weight (kg) | Max Width (c) (mm) | **Panel Weight Assembled (kg) |
|-----------------|------------------------|-------------------|--------------------|-------------------------------|
| 1500            | 2025                   | 5.6kg             | 2650               | 32kg                          |
| 1800            | 2325                   | 6.4kg             | 2400               | 32kg                          |
| 2100            | 2725                   | 7.5kg             | 2100               | 30kg                          |
| 2400            | 3125                   | 8.6kg             | 1700               | 27kg                          |



\*Based on 100mm x 100mm Box Section

\*\*Based on 144mm Centre Pale Spacing. Other Options are available by request

Electro-safe is available in standard unassembled profiles or in fully assembled panels ready for a faster site installation. Each pale is double bolted top and bottom with shear nuts as standard for maximum security. Alternative fixings can be used to provide for ability for disassembly. A choice of top shapes can be accommodated including the single point, round edge, or using a triple point splayed steel fitting.

Posts are available in 2 different types, I beam or box section, the latter which can be used for further telescopic height extension and gate openings. Post caps are available for box sections profiles.

A base unit is available to ensure an accurate depth of post installation and efficient use of post-mix material. Alternatively, steel anchor plates and bolts can be used in conjunction with the posts to provide fitting to hard standing ground.

Please refer to the installation guide for further information

Standard Colour Options (others available by request)



[adrian@suregrip.co.uk](mailto:adrian@suregrip.co.uk)  
[www.suregrip.co.uk](http://www.suregrip.co.uk)