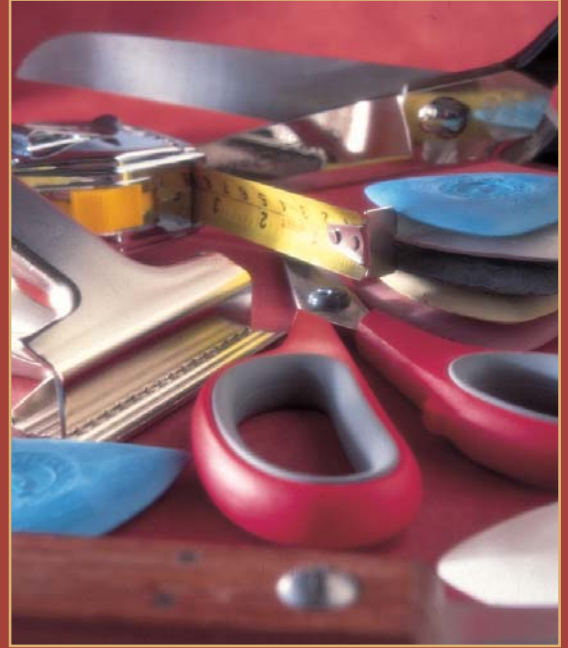


Workroom Tools



Workroom Tools

SCISSORS and SHEARS

- ◆ **COMPREHENSIVE** choice of sizes and styles
- ◆ **Superb SHARPNESS**, accurate and positive cutting action reduce user fatigue
- ◆ **Serrated lower blade** for cutting the finest silks to the heaviest tweeds
- ✓ Occasionally use a small drop of light oil on the blades and joints
- ✓ Your scissors and shears are precision made; to maintain their performance do not use them to cut wire, lino, paper or use them as a lever



4323 240mm (9½") DRESSMAKER SCISSORS

Stock Unit EACH

Black plastic contoured high comfort handle

D69 THREAD SNIPS

Stock Unit EACH

Plastic handle

- ◆ Ideal for snipping off thread ends

668B 115mm (4½") EMBROIDERY SCISSORS

Stock Unit EACH

Plastic handle

4969 230mm (9") TAILORS SHEARS

Stock Unit EACH

Black enamelled handle

- ◆ Stay set pivot - special bolt assembly allows user to set shears to their individual needs

4319 200mm (8") TAILORS SHEARS

Stock Unit EACH

Black enamelled handle

4322 215mm (8½") DRESSMAKER SCISSORS

Stock Unit EACH

Black plastic contoured high comfort handle

482 150mm (6") SEAM RIPPER

Stock Unit EACH

White handle

- ◆ Ideal for easy ripping of seam threads

690SF 240mm (9½") DRESSMAKER SCISSORS

Stock Unit EACH

- ◆ "Soft feel" handles **ERGONOMICALLY** designed handle for greater comfort, reduces user fatigue



4321 305mm (12") TAILORS SHEARS

Stock Unit EACH

Black enamelled handle

4320 255mm (10") TAILORS SHEARS

Stock Unit EACH

Black enamelled handle

49612 305mm (12") TAILORS SHEARS

Stock Unit EACH

Black enamelled handle

- ◆ Stay set pivot - special bolt assembly allows user to set shears to their individual needs

49610 255mm (10") TAILORS SHEARS

Stock Unit EACH

Black enamelled handle

- ◆ Stay set pivot - special bolt assembly allows user to set shears to their individual needs

660SF 215mm (8½") DRESSMAKER SCISSORS

Stock Unit EACH

- ◆ "Soft feel" handles **ERGONOMICALLY** designed handle for greater comfort, reduces user fatigue

SHEARS and WORKROOM TOOLS

Shears & Tools

- ◆ Superb SHARPNESS, accurate and positive cutting action reduces user fatigue
- ✓ Occasionally use a small drop of light oil on the blades and joints
- ✓ Your shears are precision made; to maintain their performance do not use them to cut wire, lino, paper or use them as a lever

262 229mm (9") PINKING SHEARS

Stock Unit EACH
Black enamelled handle

- ◆ Helps to prevent fraying of material

493 255mm (10") LEFT HANDED SHEARS

Stock Unit EACH
Black enamelled handle

- ◆ TRUE Left handed shears



SFC SPRUNG FABRIC CLAMP

Stock Unit EACH

- ◆ Jaw width 73mm x jaw opening 65mm
- ◆ Bottom jaw serrated for grip, top jaw broad and flat
- ◆ Overall length 180mm
- ◆ All round VERSATILE general purpose clamp
- ◆ Ideal to keep FABRIC TAUT when measuring, cutting or hand sewing etc.
- ◆ An "EXTRA" pair of hands

199A STANLEY KNIFE

Stock Unit EACH

- ◆ All round VERSATILE general purpose knife
- ◆ Complete with 3 blades (located within the handle)
- ◆ STURDY and robust
- ◆ Retractable blade

1992 STANLEY KNIFE BLADES

Stock Unit BOX 100

- ◆ HEAVY duty general purpose blade
- ◆ Ideal for carpet, vinyl and materials requiring a stiffer blade

9911 "JUNIOR" HACKSAW BLADES

Stock Unit PACK 10

- ◆ 180mm (7")
- ◆ General purpose metal cutting blade
- ◆ Pinned edges, will fit most junior hacksaws



ADHESIVES



2830 HEAVY DUTY SPRAY ADHESIVE

Stock Unit EACH

- ◆ 400ml Aerosol Spray Can
- ◆ CFC free - contains NO propellant alleged to damage the ozone
- ◆ Heavy duty - ideal for upholstery, carpet, foam based materials etc
- ◆ Water resistant



GG202 HOT MELT GLUE GUN

Stock Unit EACH

- ◆ Easy to use with REACTIVE trigger for MAXIMUM control and an easier outflow of glue
- ◆ Illuminated on/off switch
- ◆ Well balanced with retractable support stand
- ◆ Complete with FITTED plug and 2 glue sticks
- ◆ Ideal for bonding fabric, wood, metal, cardboard, ceramics, leather and many other articles

GS GLUE STICKS

Stock Unit EACH

- ◆ For use with the GG202 Hot Melt Glue Gun
- ◆ 11.75mm dia x 300mm length
- ◆ Open time 45 - 60 seconds
- ◆ Ideal for bonding fabric, wood, metal, cardboard, ceramics, leather and many other articles



R906E SPARE GLUE BRUSH

Stock Unit EACH

- ◆ Pure bristle, 15mm wide head
- ◆ Overall length 185mm
- ◆ Ideal to get to the BOTTOM of your Copydex container
- ◆ No wastage of glue

COPYDEX ADHESIVE

- ◆ STRONG, versatile general purpose adhesive
- ◆ Suitable for paper, fabric, carpet etc.
- ◆ SOLVENT free

111T 57ml TUBE

Stock Unit BOX 12

111J 125ml JAR

Stock Unit EACH

1110250 250ml CONTAINER

Stock Unit EACH

1110500 500ml CONTAINER

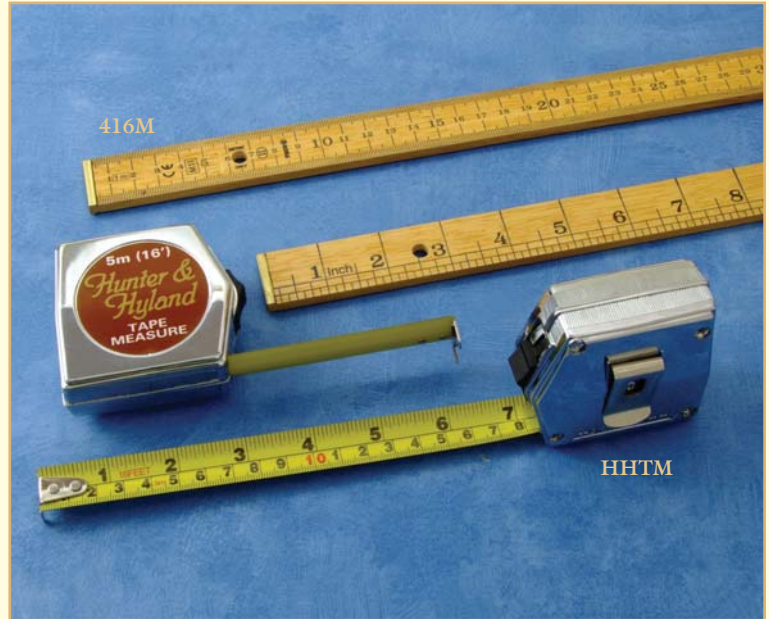
Stock Unit EACH

MEASURES

416M 1metre/3 foot WOODEN RULE

Stock Unit EACH

- ◆ Government Stamped
- ◆ Graduations - 8ths and figured inches on one side
- ◆ Graduations - mm and figured cms on other side
- ◆ Manufactured from hard wood with brass tips
- ◆ Lacquered for protection with black figure and graduations
- ◆ 28mm wide x 5mm thick



HHTM 5metre/16 foot TAPE MEASURE

Stock Unit EACH

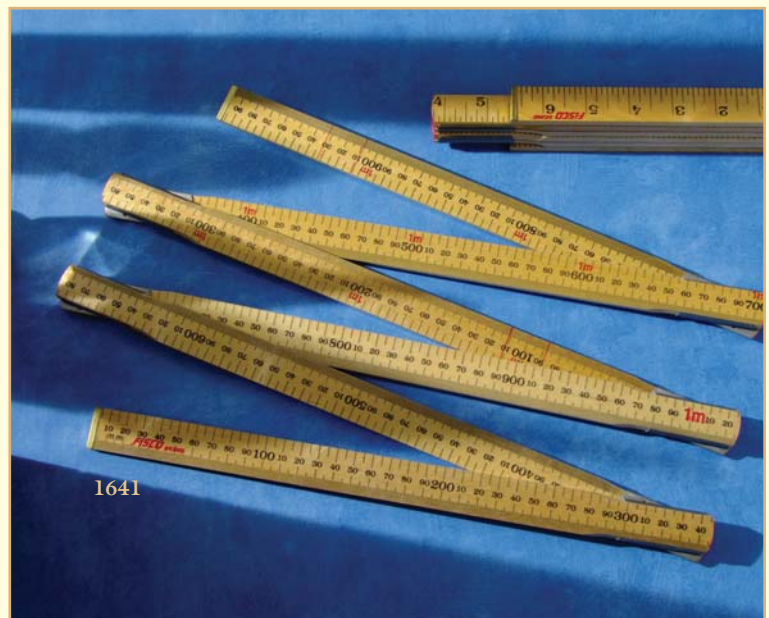
- ◆ Unique versatile sculptured "foot" has FINGER at one end
 - ◆ FINGER fits into curtain ring eye or glider for ACCURATE measurements of curtain drop whilst still maintaining its use as a general tape measure (See inset photo)
 - ◆ Graduations - mm and figured cms on BOTTOM edge
 - ◆ Graduations - 16ths and figured inches on TOP edge (32nds are shown in the first 6 inches)
 - ◆ Zero indicator - "foot" moves for accurate internal or external measurements
 - ◆ Wear resistant chrome plated plastic case with belt clip
 - ◆ 18mm wide yellow face with easy to read black and red graduations
 - ◆ Automatic tape return with easy to use sliding LOCK button, (tape can be locked at any point)
- ✓ Care must be taken as tape can return into housing at some speed



1641 2metre/6 foot FOLDING RULE - 6 FOLD

Stock Unit EACH

- ◆ Graduations - 8ths and figured inches on one side
- ◆ Graduations - mm and figured every 10mm on other side
- ◆ Manufactured from hard wood with brass tips
- ◆ Lacquered for protection with black figures and graduations
- ◆ 25mm wide x 5mm thick
- ◆ Sprung stop joints are pinned to the rule and cannot work loose



MARKING CHALK

Marking Chalk



1221 TRIANGULAR MARKING CHALK

Stock Unit BOX 100

Colours available:

W White

AC Assorted Colours

- ◆ *Triangular chalk with 3 65mm POINTED edges*
- ◆ *Assorted colours comprise of White, Yellow, Blue, Red and Black*
- ◆ *Suitable for all but the most delicate of fabrics*
- ◆ *Chalk marks easily removed by light brushing*