

Weatherhead High School

A high performing academy providing excellence for all



Welcome Guide 2019




Ofsted
Outstanding
Provider


World Class Students Make
World Class Schools

Resilience

Respect

Reach

Reward

"Students make outstanding progress whatever their starting point or circumstances and the standards they achieve are significantly above national averages."

Ofsted

**a high
performing
academy
providing
excellence
for all**

CONTENTS

Welcome to Weatherhead	Page 4
We Take Pride in Our Achievements	Page 6
We Strive for Excellence	Page 7
Every Child Matters	Page 8
Supporting Your Daughter	Page 10
Equal Opportunities for All	Page 12
Home School Partnership	Page 14
Keeping You Informed	Page 16
Help Available to Parents	Page 17
The School Day	Page 18
School Routines	Page 19
School Expectations	Page 22
School Uniform	Page 24
Curriculum	Page 26
Extra-Curricular Activities	Page 28
Trips and Activities	Page 30
Physical Education	Page 31
Online Learning and E-Safety	Page 32
Leadership Specialism	Page 34
Most Able Provision	Page 35
Student Voice	Page 36
Excellence in Media Arts	Page 37
From Year 7 through to Sixth Form	Page 38
Careers Guidance: Future Choices	Page 40
Useful Contacts	Page 42
Notes	Page 43
Term Dates 2019-2020	Page 44

WELCOME TO WEATHERHEAD



Miss A. Whelan

Weatherhead is a very popular and successful 11-16 girls' comprehensive school with nearly 1600 students on roll, including a mixed Sixth Form of approximately 300 students. The school continues to be ranked among the very best state schools in the country, as we encourage and enable our students to be resilient, show respect and reach for their dreams. An ethos of 'excellence for all' permeates everything in this outstanding school, establishing Weatherhead as a beacon of success.

Our GCSE scores are consistently outstanding and we have achieved a top place in DfE National League Tables a number of times in the last 5 years. In the last 3 years, the school has consistently achieved significantly above the national average and has positive scores for

both Progress and Attainment 8 measures, meaning that our students perform very well in comparison to students from similar schools in 8 subjects at GCSE.

At Weatherhead, our outstanding provision, achievement and support have been recognised externally and nationally. We have recently been accredited 'World Class Schools' status (December 2018) giving us recognition that we have moved beyond our 'Outstanding' Ofsted status and have improved student progress, aspiration and achievement to such an extent that our students rival those of the best schools nationally and internationally. We are the only non-selective school in Wirral and Merseyside to have been awarded this quality mark. Our Maths department has been recognised in the national 'TES Awards' and we were named as 'Secondary School of the Year 2017' at the Wirral Globe Awards. We have also recently received the 'National Quality Award for Careers Education' and have been re-awarded 'Arts Mark Gold' status.

We pride ourselves on excellent teaching and learning and all staff work tirelessly to ensure that all Weatherhead students have an appropriately challenging

curriculum, matched to their ability and expertly delivered. Staff encourage students to think independently whilst guiding them to achieve excellence in their academic learning and in their internal and external examinations, and to participate fully in the life of the school and have informed decisions on their future pathway.

We have extremely high expectations in our community and aspiration and ambition is generated so that now almost all students continue their education through our Sixth Form. Last year at the end of Sixth Form over 100 students secured places at universities across the country and all other students were successful in gaining apprenticeships or employment.

Every child at Weatherhead is encouraged to find something at which they can excel at; helping to build self-esteem and confidence whilst promoting resilience and ensuring students are stretched and challenged beyond the classroom. Each week over 300 extra-curricular clubs are delivered by staff for all ages. In the last two years, 250 trips and visits, including residentials and travel abroad have taken place to enrich curricular and work related learning.

Developing leadership qualities in all students is firmly embedded at Weatherhead and almost all students acquire diverse leadership skills and qualifications ranging from subject ambassadors and sport leaders, to volunteers in the community and peer mentors. Weatherhead is also a local Duke of Edinburgh centre and to date has helped over 300 students achieve Bronze, Silver and Gold Awards.

We are very fortunate to have some of the best facilities in the country and our Teaching School status means we attract and develop some of the highest calibre staff, and continually deliver best practice in education and leadership.

Staff and Governors are very proud of Weatherhead and work hard to ensure we provide first class education for every one of our students in a happy, caring and supportive environment. We are confident that every student that comes here will have a rich and rewarding educational experience of the very best quality.



Miss A. Whelan,
Headteacher

WE TAKE PRIDE IN OUR ACHIEVEMENTS



Outstanding GCSE success for Weatherhead students.

In total there were 1,627 entries at GCSE - 77% of grades were grades 9-4/A*-C and record levels of attainment were recorded in many subject areas.

Weatherhead Students Celebrate A Level Success Breaking New Records!

Weatherhead High School celebrated excellent results for A Level students with a 39% pass rate A*-B, 74% A*-C and 99% pass rate for all students (A*-E).



Ofsted Report – Summary Extracts

Students make outstanding progress whatever their starting point or circumstances and the standards they achieve are significantly above the national averages.

- The achievement of pupils is outstanding.
- Teaching is outstanding.
- Excellent relationships exist between staff and students, built on mutual respect, which inspire confidence and create an environment in which outstanding learning takes place.
- The school has a very strong sense of community and the successes it has achieved are very much the result of a team effort.
- Pride in the school is shared by all.
- All leaders and managers are uncompromising in their quest to give all students first class opportunities to learn and as a result students make outstanding progress.
- Unswerving commitment to improvement leads to exceptional student achievement.
- Outstanding leadership from everyone is at the heart of this school's success.
- The 'culture of success' is shared by all. This is a truly cohesive school where everyone shares the same values.

Overall effectiveness	Grade 1 Outstanding
Achievement of pupils	Grade 1 Outstanding
Quality of teaching	Grade 1 Outstanding
Behaviour and safety of students	Grade 1 Outstanding
Leadership and management	Grade 1 Outstanding

Visit www.weatherheadhigh.co.uk for the full Ofsted Report

WE STRIVE FOR EXCELLENCE

- To provide a relevant, stimulating learning experience that develops all Weatherhead students' enquiring minds.
- To equip all students with transferable skills required in a media-rich global environment.
- To encourage and develop self-confidence, self-esteem and self-discipline.
- To employ strategies aiming to ensure that each student attains the highest possible standards to secure their future economic well-being.
- To utilise initiatives which enhance learning and teaching in order to develop the potential of students, families and the wider community.
- To provide a safe, caring and stable environment where each student is encouraged to make a positive contribution to the school and wider community.
- To enable Weatherhead students to develop an awareness and understanding of the needs of others within the school, together with the wider national and international community.



Artsmark
Gold Award
Awarded by Arts
Council England



Weatherhead
Teaching School Alliance



The Quality in Careers Standard >>>>



THE DUKE OF
EDINBURGH'S AWARD



SPORT
ENGLAND



EVERY CHILD MATTERS

Every child at Weatherhead is entitled to:

- Be healthy
- Stay safe
- Enjoy and achieve well
- Make a positive contribution to the school
- Achieve economic well-being

Behaviour for Learning

We firmly believe that a high standard of behaviour from all our students is essential. All students are also expected to conform to a Framework for Learning which is vital to the efficient and safe running of the school.

There are three key overriding principles:

- **Every student has the right to learn.** No student can ever be allowed to prevent others from learning.
- **Every student has the right to feel safe.** No student should ever be allowed to make another person feel uncomfortable or threatened.
- **Every student has the right to a personalised learning experience.**

Details of the Behaviour for Learning Policy are contained in your daughter's Planner.



We celebrate positive relationships and students are rewarded for their effort and commitment through our excellent rewards system called IRIS (It Really Is Simple).

IRIS is a web-based system used to monitor and record student behaviour.

Students collect IRIS rewards for making positive behaviour choices and have incidents entered for negative behaviour choices.

Students can access their rewards total via the school website. They can 'shop' online and rewards will be delivered to them during Form Time.



Bullying has no place in our School

This statement is printed in students' planners and is reinforced through Assemblies, Tutors and in lessons.

At Weatherhead, we promise to do our best to prevent bullying whenever we can and try to help to overcome it whenever it is reported.

By bullying we mean:

- Deliberately hurtful behaviour repeated often over a period of time.
- Any occasion when somebody deliberately upsets, intimidates, threatens or harasses someone else.



As a student you can help too by...

- Reporting bullying, either towards you or when you see it happening to others.
- **Avoiding situations on the computer/mobile phone where bullying can take place and trying to persuade friends to do the same.**
- Trying your best to keep problems from outside school away from Weatherhead.

The 'Supporting Sevens' are a group of year 12 students who are available at Form Time and occasionally during Lunchtime to support our younger students and inform staff over any concerns of bullying.

"Excellent relationships exist between staff and students, built on mutual respect, which inspire confidence and create an environment in which outstanding learning takes place."

OFSTED

SUPPORTING YOUR DAUGHTER

Year Teams

Your daughter will have a Form Tutor who, in most cases, will move up through the school with her.

The Year Leader will work closely with your daughter's Form Tutor and the Student Services Team on all matters concerning her progress, both academic and pastoral.

The Student Services Team has five Pastoral and Academic Support Workers, a Well-Being Co-ordinator, Attendance Officers and other professionals all dedicated to providing the best for Weatherhead students.

The quality of our work has been recognised by OFSTED and by the numerous awards of excellence presented to the school.

Supporting New Intake Students

Many of our new intake students are already familiar with the school as a consequence of our outreach work with local primary schools.

We organise induction days and curriculum visits to ensure students settle in and find their way around the building.



Parents are encouraged to contact the school at any time if they need clarification or if they are concerned about their daughter.

Our Headteacher, provides the opportunity for open surgery events where parents are able, without appointment, to visit the school. These are well publicised in advance on our website.

Students With Additional Needs (SWAN)



The school offers a variety of support to accommodate students' learning. Learning Support Assistants are assigned to many curriculum areas throughout the

school, as well as working with all Year Teams. They are available to work with students both before and after the teaching day, offering support with homework and coursework.

Mrs Duffy is a Higher Level Teaching Assistant responsible for students with dyslexia and English as an additional language. She is able to carry out a preliminary assessment and offer support and guidance to students and their families.

Mrs Daly is a Higher Level Teaching Assistant who supports students who are based in the Learning Zone. This provision supports students for a variety of reasons. Mrs Daly works closely with the students following an alternative curriculum.

If you have any concerns about your daughter, please contact Mr Morris, Director of SEND. Mr Morris is supported in the office by Mrs Slater (SEND Administrative Officer) whose role is to liaise with parents, external agencies and school based staff to ensure that the relevant information is collated and meetings are held at convenient times and venues.

Advice and Guidance for Parents

Should you have concerns regarding your child's well-being or safety, in the first instance direct any concerns to your GP (Health Concerns); Police (Safety Concerns); School (Educational Concerns).

Members of the Student Services Team are available to meet with current and/or prospective students and families to:

- identify support needs and reasonable adjustments
- discuss strategies for managing student life
- provide short-term support
- provide information and, if needed, access to other services
- liaise with academic and other departments on behalf of students, where agreed

Staff are also available to meet with students who have concerns to advise on a number of strategies which may help them improve their well-being.

EQUAL OPPORTUNITIES FOR ALL

All students have equal rights, equal opportunities and equal access to their education. They are entitled to receive the appropriate support they need to become valued and active members of the community.

Weatherhead aims to provide an environment in which each student is treated as an individual, giving them the opportunity to develop to their maximum potential in all aspects of school life.

We see the education which we offer as preparation for living in a changing society. It is our aim to provide opportunities for students to gain appropriate experience in all aspects of their development, irrespective of gender, race, religion, health and ability.

In order to achieve these ends, each student will be encouraged to pursue their studies and interests according to their individual requirements and we shall strive to provide the appropriate support and guidance.

The school adheres to all aspects of the Equalities Act and the School Equality Scheme is in the policies section of the school website.

In the event of financial hardship

It is our utmost concern to ensure that all reasonable steps are taken to ensure students are able to share in the experiences that our school offers. In cases of genuine hardship, parents should contact, in confidence, the Year Leader, for the appropriate help.

Religious Education

Religious Education is taught throughout the school and has a key role in helping students to develop a personal framework of values, attitudes and beliefs. Students are able to understand the nature of religion and how it is expressed in the lives of believers. The major world faiths are covered including Christianity.

Morning Assemblies help to explore different aspects relating to spiritual, moral, social and cultural themes which are also explored in Form Time.

Child Protection

Children and young people have individual rights. Above all, they have the right to have their basic needs met and to be free from harm.

At the heart of our child protection policy is the immediate liaison with the Social Services section of the Wirral Children and Young People's Department.

Our Deputy Headteacher and Director of SEND have specific responsibility for child protection issues.

Safeguarding

In terms of employment, the school has rigorous procedures in place to ensure that staff are suitably qualified to work with children and young people.

All staff are DBS checked at the time of appointment; visitors to the school are required to show personal identification.

Procedures relating to accidents, site security and child protection are further specific examples of 'safeguarding' measures.

Extended Health Schools' Provision

As part of this provision, external agencies provide appropriate support to our students. This includes a School Counsellor, Brook Advisory team, School Nurse and Youth Workers. These agencies adhere to a separate confidentiality agreement to school.

"Students feel safe and happy at school; they enjoy their learning and are keen to do well. They talk with enthusiasm about what this school offers them and they have a sense of pride in their school community."

OFSTED



HOME-SCHOOL PARTNERSHIP

Weatherhead High School agrees to:

- Help all students achieve their potential in all aspects of school life.
- Provide a balanced curriculum and set work appropriate to the student's age and ability.
- Encourage, reward and celebrate the successes of our students.
- Keep parents informed about student progress through written reports and Parents' Evenings and to advise about general school matters through regular communication.
- Endeavour to provide a safe and supportive environment in which students can pursue their studies.



As a Parent you agree to:

- Ensure your daughter attends school regularly, on time and properly equipped.
- Encourage your daughter to complete all homework and check and sign her Planner each week.
- Inform the school about any particular problems that might affect your daughter's work or behaviour and to provide written confirmation school to explain any absence.
- Try to attend Parents' Evenings and other discussions about your daughter's progress.

Parent-Teacher Consultation Evenings

A Parents' Evening is held for each Year Group once a year and twice in Year 7 and 8. Dates will be provided at the start of the school year in September and parents will be informed of the arrangements for this evening in advance. Students will record times for Parents' Evening in their Planner when they make appointments with their teachers.

Parents' Evening is an important part of our communication with home

and an opportunity for parents to discuss their child's progress.

Parents will receive two updates per year on their daughter's progress: a Progress Update plus a detailed written report with specific targets for improvement. These are at different times of the year depending on the year group, in order to reflect the focus of that year, for example the report in Year 9 is in advance of the Options Evening.

Parents, Teachers & Friends @Weatherhead

An informal meeting of parents takes place each term to share thoughts on school life and to support or shape events to help the school and families here.

Ideas and fundraising efforts such as, the Annual Christmas Fair, so far have contributed to the behaviour reward scheme IRIS, the Learning Resource Centre, PE team kits, gardening club, iPads, creating a more vibrant outside recreation area, and sponsoring our World Challenge team.

The group also seek to champion local initiatives as part of our community role and always seek new ideas and individuals to engage with. Such an innovative event was our Year 9 Well-being event 'Be The You in Yourself'.

Notices of meetings and minutes are published on the school website.

For more information about the PTF, email the Chair
Mrs Suzanne Broster:
ptf@
weatherheadhigh.
co.uk



KEEPING YOU INFORMED

Weekly updates are available on our website

Subject/Topic	Date	Page	Author
News	10th February 2019	1	Students
Headlines	10th February 2019	2	Students
Class News	10th February 2019	3	Students
Class News	10th February 2019	4	Students
Class News	10th February 2019	5	Students
Class News	10th February 2019	6	Students
Class News	10th February 2019	7	Students
Class News	10th February 2019	8	Students
Class News	10th February 2019	9	Students
Class News	10th February 2019	10	Students
Class News	10th February 2019	11	Students
Class News	10th February 2019	12	Students
Class News	10th February 2019	13	Students
Class News	10th February 2019	14	Students
Class News	10th February 2019	15	Students
Class News	10th February 2019	16	Students
Class News	10th February 2019	17	Students
Class News	10th February 2019	18	Students
Class News	10th February 2019	19	Students
Class News	10th February 2019	20	Students
Class News	10th February 2019	21	Students
Class News	10th February 2019	22	Students
Class News	10th February 2019	23	Students
Class News	10th February 2019	24	Students
Class News	10th February 2019	25	Students
Class News	10th February 2019	26	Students
Class News	10th February 2019	27	Students
Class News	10th February 2019	28	Students
Class News	10th February 2019	29	Students
Class News	10th February 2019	30	Students



Weather Report

'Weather Report' magazine is published twice a year and keeps you up to date on all the amazing activities, trips, visits and competitions that happen throughout the year. It is the ambition of many students to appear in the magazine and families enjoy this vibrant inside view on life at Weatherhead!!



For latest news, letters and key dates visit our website:

www.weatherheadhigh.co.uk



@WeatherheadHigh



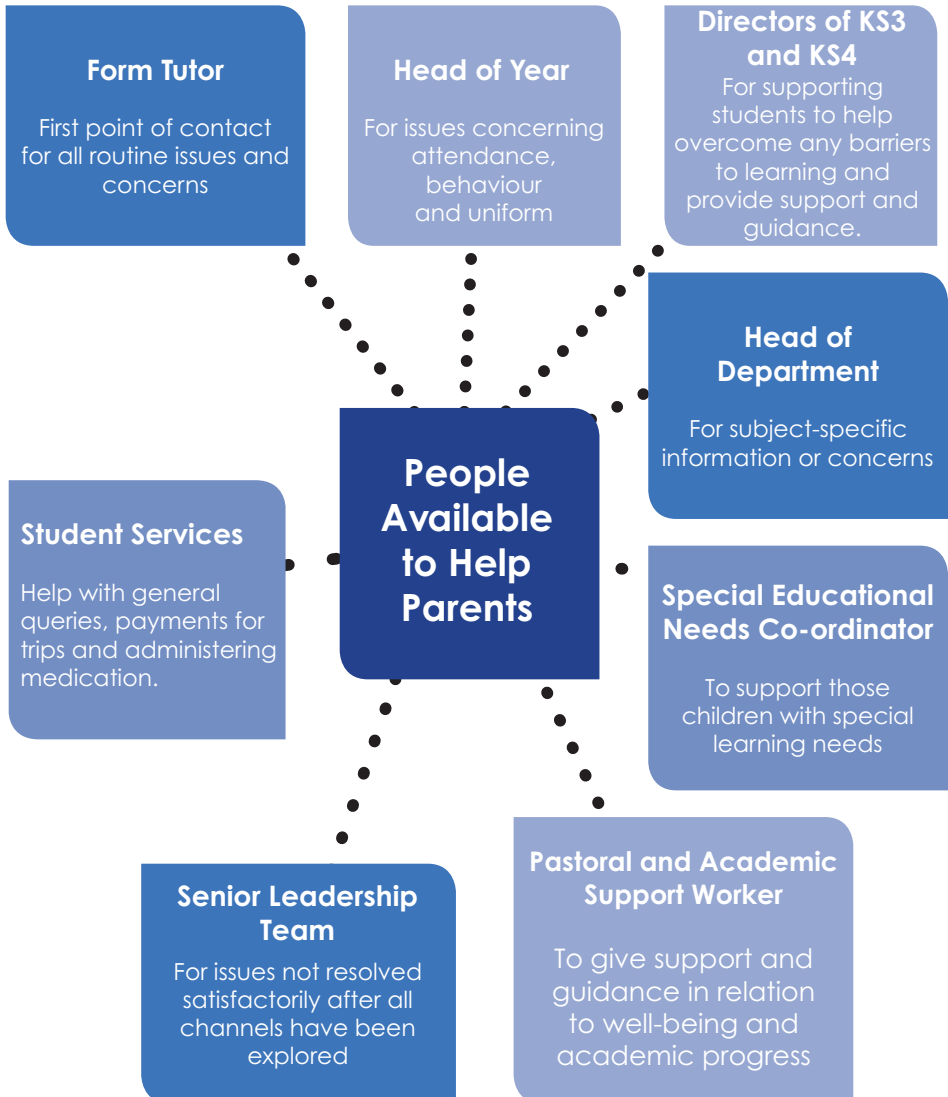
WeatherheadHigh

WTV episodes can be found on the school website and students view new episodes in the theatre each term. Check out the latest episodes now at www.weatherheadhigh.co.uk/weatherheadtv



HELP AVAILABLE TO PARENTS

We have a wide range of people available to help parents with any issues they may have. Please ring the school office to request an appointment giving at least 24 hours notice.



THE SCHOOL DAY



THE SCHOOL DAY

Registration	8.35 - 9.00
Late Bell	8.40
Period 1	9.00 - 9.50
Period 2	9.52 - 10.42
Break	10.42 - 10.57
Period 3	10.57 - 11.47
Period 4	11.49 - 12.39
Lunch	12.39 - 13.38
Period 5	13.38 - 14.28
Period 6	14.30 - 15.20

SCHOOL ROUTINES

Student Planners

Your daughter will be issued with a Planner. This Planner is a key part of the communication process between home and school. Please check it regularly and sign it weekly. Your daughter's Form Tutor and her teachers will use it for messages to you. Your daughter should also write all of her homework in the Planner. If you have any concerns, please write in the Planner and you will receive a reply from the Form Tutor or teacher.

Homework

All students will be given homework from the start of Year 7. Students will receive a homework schedule in September, along with guidelines regarding the quantity and length of time to be spent completing homework. Homework will be recorded in the Planner.



Homework Support

Homework support sessions are held on two occasions every day to support your daughter with her studies. Students are invited to attend The Learning Zone at lunchtimes from 1pm and after school from 3.20pm to 4.10pm.

Students can work independently, or request one-to-one support, should they need it. This way, any homework related issues can be resolved.

Marking Policy

Your daughter's work will be marked regularly to help her to recognise her strengths and understand how to improve aspects of her work to achieve the next level/grade. Marking will praise and encourage your daughter - we want her to value her work and feel motivated to produce high quality work which will help her progress.

SCHOOL ROUTINES

Detentions

Students can be detained for a short period after school (no longer than 20 minutes) for unsatisfactory work or behaviour. If students need to be detained for a longer period of time parents will be given at least 24 hours notice.

Mobile Phones

Students are not permitted to use mobile phones, tablets or other electronic devices during the school day under any circumstances.

This includes: phoning, text messaging, use of blue-tooth, recording, broadcasting, photography, as a clock or as a calculator.

Mobile phones must be switched off on entering the school site and remain in bags or pockets during the day. Students seen using mobile phones will have them confiscated and parents will have to collect them from Reception at the end of the day. Any student who needs to use a telephone during the day to contact her parents may approach the Student Services Office and explain the essential nature of the phone call.

Lunchtime Arrangements

We do not allow students to leave the school premises at anytime during the school day. Your daughter may bring a packed lunch or purchase a variety of hot and cold dishes from the Dining Hall. We operate a cashless system and your daughter will be given a card on her first day in Year 7 to use to top up. You can use ParentPay (accessed via our school website) to top up the card.

Students have designated areas at lunchtime and these rooms and outside spaces are fully supervised.



"Students' behaviour around the school site and in lessons is exemplary."

OFSTED

School Dinners

As a healthy school we take food and nutrition very seriously. A good meal is paramount for our students to enjoy during their busy days here at Weatherhead and the school meals provider, Chartwells, provides three separate menus which are rotated weekly, so students have a balanced diet. The menus are listed on the school website.

Prices vary but there are several 'meal deal' options which provide very good value for money and which are popular with students. In addition, there is a vending machine in school, which sells bottled drinks.

Free School Meals

If your daughter receives Free School Meals you need to re-apply for this to continue at Weatherhead. You can do this via the School Information tab on our school website or by telephoning the school for further information.

Smoking

Please note that smoking is not permitted in or around the vicinity of the school premises.

Personal Property

Valuables should not be brought to school. All personal property should be clearly marked with the owner's name. Money, watches, etc. must be carried on the person, preferably in a purse or purse belt.

The school cannot accept responsibility, and is not liable for, the loss of students' personal property. Lockers are available to store other items e.g. books and outdoor coats.

Lost Property

We aim to return all lost and found items to their rightful owner. To help this system all items are kept for three months. If they are not claimed items are given to charity.

A detailed list of lost property is displayed on posters around school, the list is updated regularly and can also be accessed via the School's website.

SCHOOL EXPECTATIONS

Punctuality

Students must be in school by 8.30am.

We run a Breakfast Club in the Dining Hall from 8am which offers free tea, coffee and toast. A range of hot snacks can also be purchased.

Students who are late to morning registration on two or more occasions will be required to complete a detention. It is essential that students arrive to lessons promptly.

Full Attendance

Full attendance is vital if your daughter is to fulfil her potential, make progress in her school subjects and take advantage of the educational opportunities available at Weatherhead. Students should only be absent if they are ill. In the case of minor ailments, we ask that you send your daughter to school and you will be contacted during the day, if necessary. It is the student's responsibility to catch up on any work missed due to absence.

Any student who has been ill and therefore absent from school should bring a note to her Form Tutor upon returning to school, even if the parent has previously telephoned the school. There is a section in the Planner to write absence notes.

Parents are requested to contact school on the first and every subsequent day of absence. Year Leaders should also be informed at once if a student contracts an infectious disease.

Any student who wishes to be signed out of school to attend clinic, hospital, dental appointments etc. must bring an official card or note from the parent and take it to the Student Services Office who will issue her with an Authorised Absence Pass. Wherever possible, such appointments should be made out of school hours.

If your daughter does feel unwell, in school she must see her Year Leader who will contact you directly.

If your daughter needs to leave school for an appointment or because she is unwell she must be collected by her parent or a nominated adult, details of this adult must be held on the school's computer system.

Leave of Absence

Wherever possible you should take your family holidays during school holidays.

- Absence during term-time as a result of holidays interrupts the continuity of both teaching and learning, suspends the educational progress of your child and creates disruption in classes.
- Even a week of work missed can have a significant effect upon a child's success and ability to progress. A week of absence adds up to 30 lessons missed.
- At Key Stage 3 and Key Stage 4 there are public examinations and modular tests at various times during the year. The pace of curriculum delivery is such that students never manage to copy up, let alone fully understand any of their missed studies.

For messages regarding absence, please telephone on 631 4410 (direct line). Parents are requested to contact school on the first and every subsequent day of absence.



SCHOOL UNIFORM

Our school uniform has been developed and designed with our students at heart. Our uniform is clean, crisp and smart, easy to wear and comfortable.

We take pride in our students and expect them to take pride in their uniform, in school and when they are in the community.

Our school jacket is a compulsory item of school uniform and has been exclusively designed for Weatherhead. Jackets are only available from **Baker and Son Schoolwear**.

Ordering Uniform

Baker and Son Schoolwear also provide the PE kit and school branded uniform. These items can be ordered online or through mail order forms which can be downloaded from our website.

Full details are available online with current prices and sizes.

Visit **www.weatherheadhigh.co.uk/school-uniform**

You may find it useful to read the **Guide to Online Ordering for Parents** located on our website, which gives step-by-step instructions to help you register as a new customer and place your order.

School Uniform

School uniform must be worn in school, when travelling to and from school and at all school functions.

These are the essential items of uniform:

- School Jacket.
- White short-sleeved reverse collar blouse.
- Navy blue skirt or trousers. Skirts must be an appropriate length i.e. just above the knee.
Please note that gym slip style and pencil skirts are not permitted.
- Plain navy blue, black or white socks or tights.
- School shoes - Plain, flat, black shoes **ONLY**. Boots, pumps, trainers and Kicker boots are **not permitted**.

These are optional items of uniform:

- Navy blue Weatherhead V-neck jumper or cardigan

For uniform queries contact:
Student Services on
0151 631 4400.

PE Kit

- Navy blue shorts.
- Weatherhead Polo shirts (choice of 2 styles).
- Track suit trousers.
- Trainers are also required for P.E.



Students are **not permitted** to wear:

- Jewellery in school apart from one pair of stud earrings, one signet ring and watch.
- Facial piercings.
- Extreme hair colour. Hair colour should be appropriate for school.
- Flowers and other hair decorations.
- Nail varnish and acrylic nails.
- Make-up including false eyelashes or lash extensions.



CURRICULUM

Key Stage 3 (Years 7, 8 and 9)

In Key Stage 3, students study English, Mathematics, Science, History, Geography, ICT, Religious Education, Art & Design, Music, Drama, Dance, Personal Social, Health and Citizenship Education, Physical Education and Spanish.

We enrich the curriculum with many other opportunities, for example, Latin is taken by Year 7 students as part of our Most Able Provision.

From the outset, emphasis is placed on high academic standards for which the school is very well known.

Preparation for Examinations

In addition to the high quality teaching and learning in the classroom, many students are provided with extra support to prepare them for examinations.

This may be in Form Time, at lunchtime sessions, after school revision classes or by attending the comprehensive 'Easter School' which provides revision sessions for a wide range of GCSE and A Level courses.

Key Stage 4 (Years 10 and 11)

The core examination subjects are: English Language, English Literature, Mathematics, Science and MFL.

The core curriculum also includes non-examination subjects which are Physical Education (PE), Personal, Social, Health, Citizenship Education (PSHCE) and Religious Education (RE). These are designed to equip students with the skills needed to participate fully in society as a valuable member of the community.



Weatherhead
High School

KS4 Curriculum Guide

2019 CHOOSING YOUR GCSE OPTIONS FOR YEARS 10 & 11



Key Stage 4 (Years 10 and 11)

The optional subjects range from the following:

- Level 2 Award in Child Development and Care (CACHE)
- Computer Science
- Dance
- Design Technology
- Drama
- BTEC Award in Enterprise
- Fine Art
- Food Preparation and Nutrition
- Geography
- Health & Social Care
- History
- BTEC Tech Award in Digital Information Technology
- BTEC Tech Award in Creative Media Production Level 2
- Music
- Physical Education
- Philosophy & Ethics
- Sociology
- Textiles

Examinations and Assessment of Progress

Internal assessments or examinations are held in all subjects during the course of the year for all ages.

Students are examined at the end of every year and students in Year 11 undertake external GCSE examinations.

Regular reports giving information about student progress and attainment will be sent to parents during the year.

Students are given regular feedback on a day-to-day basis through the marking of their books.

Parents are encouraged to view students' books on a weekly basis and record any concerns in their daughter's Planner.

Parents who are concerned in any way about the progress of their children are encouraged to make contact with their daughters Year Leader and a meeting will be arranged to discuss further.

EXTRA-CURRICULAR ACTIVITIES

Weatherhead prides itself on an extensive extra-curricular timetable for all students to participate in actively. Students can sign up for classes easily and are encouraged to take part in at least one class per week. Listed below are just a few of the clubs that have been on offer:

- Active Playground
- Arts and Crafts
- Bootcamp/Circuits
- Code Club
- Cross Country
- Dance
- Drama Club
- French Culture
- Friendship and Social
- Fitness
- Football
- GCSE Revision
- Gymnastics
- Ice Radio
- Ladies Who Lunch
- Languages
- Mathletes
- Netball
- Orchestra
- Public Speaking
- Poetry Writing
- Rounders
- Tennis
- Trampolining
- Volleyball
- Weatherhead Sings

The full timetable of extra-curricular activities is available to download along with PE clubs and the Year 7 Plus clubs.

Visit our website www.weatherheadhigh.co.uk/extra-curricular-clubs



Weatherhead's Extended School offers clubs and activities to students.

Clubs include: First Aid, Cookery Club and the Duke of Edinburgh's Award Scheme.

Students from Years 9–13 take part in the Bronze, Silver and Gold Duke of Edinburgh Award Scheme on Tuesday evening. This Award helps students develop skills, confidence, independence and social skills. The course entails volunteering, skills development, planning, preparation and taking part in a residential expedition.

Cookery Club proves very popular with students who enjoy learning cookery and new dishes as a fun activity making use of the fantastic facilities.

Breakfast Club

This runs in the Dining Hall from 8am daily and offers free tea, coffee and toast. A range of hot snacks can also be purchased.

Through the Extended School programme, the Learning Resource Centre and ICT facilities are open and fully staffed each day until 5.30pm (4.30pm Friday) for Homework Club.



TRIPS AND ACTIVITIES

Trips and visits also play an important part in students' educational experiences. All Departments arrange trips for their students to bring the subject fully to life, as well as international language and cultural exchange programmes, art and cultural visits, plus plenty of social activity programmes.

- Delamere Forest
- Cambridge University
- Berlin
- Barcelona
- Liverpool Playhouse
- Theatre Trips
- Austria
- Straford-Upon-Avon
- Lady Lever Art Gallery
- Martin Mere



Year 7 visit to The Conway Centre in Anglesey

The Year 7 Residential Visit to the Canolfan Conway Centre in Wales is now an established part of the school calendar and a highlight for Year 7 students.

The visit is for three days and two nights and takes place in the Summer Term. There are sufficient places for every student in Year 7.

The students take part in four outdoor activities. These activities develop leadership, team work and problem solving skills as well as allowing students to develop in confidence and get to know other students in the year group. During the evening students take part in a number of activities led by Weatherhead staff such as a nightline and disco.



PHYSICAL EDUCATION

Students undertake a broad and balanced programme of Physical Education at Key Stage 3, which lays the foundation for further development of skills and interest in sport and physical recreation.

Students acquire and develop skills in many sports and apply these skills appropriately. The activity areas include Netball, Gymnastics, Athletics, Rounders, Badminton, Tennis, Trampolining, Football and Hockey.

In addition, a varied Outdoor Education programme, such as orienteering and team challenges that are completed on the assault course, improve their problem solving skills, team building qualities, communication and confidence.

Students develop their knowledge and understanding of health and fitness by designing and carrying out their own warm-ups and cool-downs and identifying the fitness components that are important for each activity area. In Year 9, students construct their own personal exercise plan which is completed over a 9 week training programme in the onsite Fitness Suite.

In Year 11, students gain a Junior Sports Leaders Award in recognition of their leadership skills and planning.

Physical Education holds a unique place within the Curriculum because it contributes to the physical, mental and social development of the students.

Students are provided with wide ranging opportunities to play in inter form/school competitions along with entry into national competitions for Gymnastics, Trampolining and Football.

We have state of the art facilities which enhance our provision significantly including:

Sports Hall; Gymnasium; All Weather Astro-turf Pitch; Four Netball Courts; Four Tennis Courts; Large grassed area for Outdoor Education; an Assault Course; Fitness Suite; Changing facilities with individual showers.



ONLINE LEARNING AND E-SAFETY

STAYING
SAFE
ONLINE



In Year 7, students look at online safety as part of their ICT and PSHCE lessons; throughout their time at Weatherhead, e-safety advice and guidance is also delivered through PSHCE lessons, assemblies, form time activities and Safer Internet Day activities.

On our website, you will find a directory of useful online resources to help support you with the wide range of websites, apps and devices your child might use; in the autumn term, as part of **Parents' Evening**, we can offer an e-safety advice to help you and your daughter stay safe online.

All students are asked to sign an Acceptable Use Policy (AUP) agreeing to act responsibly and respectfully online. The school uses age appropriate web filters to protect students from harmful content and help them stay focused in school. In addition to this, our software monitors all online and offline applications to help identify harmful content and misuse.

Child Exploitation and Online Protection (CEOP) helps protect children from harm online and offline. They work with child

protection partners across the UK and overseas to identify the main threats to children and young people. If someone has acted inappropriately towards a child or young person you know, please report it to www.ceop.police.uk/safety-centre or use the CEOP link on our school website under Online Safety.






Online resources and e-safety advice and information for students and parents is available by clicking the online safety link on our website.

www.weatherheadhigh.co.uk/online-safety

Please use the 'Contact' link on the school website to request additional e-safety advice and support.



For online learning, the following sites are available for students to access.

	<p>SAM Learning offers personalised learning through interactive revision and exam practice. Students have access to over 20 subjects and content reflects National Curriculum specifications and is aligned to exam boards. SAM Learning allows students to consolidate lessons and encourages independent learning. On average, students gain 2 GCSE grades better than expected with 10 hours SAM Learning. www.samlearning.com</p>
	<p>Students can access video tutorials with well-thought-out explanations and carefully modelled examples. Students log on to complete homework activities and to review and revise what they have studied in class. www.hegarty.com</p>
	<p>Students will have access to a range of Google apps, including Classroom, Drive, Docs, Slides and Sheets. These apps will give students the ability to create, collaborate, share and store work, work whenever or wherever they want, and access their work via any internet connected computer, tablet or phone they have access to.</p>
	<p>IRIS is a web based system used to monitor student behaviour. Students receive IRIS rewards for making positive behaviour choices and have incidents entered for negative behaviour choices. Students can exchange their IRIS points for items from the IRIS Shop. IRIS can be accessed via the school website.</p>
	<p>Reading Cloud allows students to see which books are available in the school's Learning Resource Centre, reserve books, read student recommendations and write reviews. It also provides searchable links to a wide variety of educational websites. Reading Cloud can be accessed at home or via the school network.</p>

Personalised login details will be issued to new Year 7 students in September as part of their induction programme.

LEADERSHIP SPECIALISM



Weatherhead High School became a Leadership Partner School in 2009.

We provide many exciting opportunities for students to develop Leadership through physical and cultural activities, as representatives of the student body and in posts of responsibility.

Leadership roles offered to Years 7 to 11 include; Form Captain, Charity Captain, Active Playground Leader, Subject Ambassadors, School Council, CSLA Sports Leaders whilst Sixth Form students can apply to become part of the Senior Student Leadership Team or Organising Committee, become a Lunch Duty Supervisor or Peer Mentor and take part in World Challenge.

Year 10 students from Weatherhead and Wirral schools take part in the annual Leadership Challenge Day encompassing team building, mental and physical challenges and testing the students' communication, team work and leadership skills. Local primaries are invited to take part in the CSLA Festival with an afternoon of fun and challenging activities for Year 4 pupils.

We believe that leadership training for students is a very worthwhile investment and we are very proud to be a pathfinder school in this exciting new development.



"Younger students are pleased with the support offered by Sixth Form students who help them with literacy and numeracy. These sixth formers are excellent role models."

OFSTED

MOST ABLE PROVISION

For our most able students we seek to create a programme of study and extra-curricular activities that extend those abilities, challenge learning and promote skills development.

Our most able students are identified by the school using Key Stage 2 test results. Our most talented students are identified from the talent audit conducted during the Autumn Term.

Activities are designed for students in all years:

Year 7-9 (KS3)

- GCSE Latin
- Stem Club
- Crest Award
- Careers Fairs
- Guest Speaker Visits
- Higher Education Lecturers

Year 10/11 (KS4)

- GCSE Triple Science
- GCSE EBACC Subjects
- Scholars' Lunch
- Guest Speaker Visits
- Aim Higher Aspiration Programme
- Mentoring and Higher Education Visits
- Liverpool University PHD Research Programme

Sixth Form (KS5)

- Scholars' Programme
- 4 A Level Package
- Scholars' Lunch
- Guest Speaker Visits
- Oxford/Cambridge Visits
- Higher Education Conferences
- University and Careers Guidance: Mentoring and UCAS Conference



Full details of the programme can be found on our website at www.weatherheadhigh.co.uk.

STUDENT VOICE

School Council and Year Councils

The Year Council comprises of two students elected from each tutor group who meet regularly to discuss Year Group issues.

The School Council is made up of two representatives from the Year Council and a nomination from the Year Leader. These meetings are presided over by representatives of the Student Senior Leadership Team (SSLT) who chair the meetings and record minutes. They meet monthly to discuss ideas and initiatives. They also discuss any issues raised by the Year Councils and jointly decide which to take forward and action.

The School Council is consulted and involved in large and small issues from changes to school uniform and improving the environment to liaising with our school meals provider to ensure the best value service for our students.

Through this mechanism, all students have a voice in the decision making process.

The Sixth Form have a Sixth Form Senior Leadership Team who meet weekly with the Director of Sixth

Form to discuss Sixth Form life and issues.

Curriculum and Year Leaders regularly meet with student panels and use questionnaires to gain the student perspective on curriculum and pastoral matters.

"I chose Weatherhead because it is a popular school and has a good reputation with great opportunities. I enjoy being on the School Council because I can provide a voice for Year 7 students and make a difference."

Year 7 student



EXCELLENCE IN MEDIA ARTS

Weatherhead became the first Media Arts College on the Wirral in 2002.

Our outstanding facilities and resources have further enhanced the provision both for our students and the community. The Susan Davies Theatre provides an excellent stage for performances, school productions, assemblies and awards evenings with high specification sound and lighting equipment and versatile seating arrangements for an audience of 450.

Our refurbished radio station broadcasts most Fridays and facilitates the Music and Media departments to record students' work. We use iPads in Dance and Drama to record and instantly evaluate student performance.

Our aim is to ensure that the new Media technologies are available to all, including students, parents and members of the wider community.

Our Media Arts Specialism has also allowed us to enhance our provision in Music, Film, Media and Performing Arts.

Bronze Arts Award is offered to girls in Year 9 and Silver Arts Award to Sixth Formers. The Award encourages students to get more involved in the Arts through participation, research and leadership.

Weatherhead has developed an extensive arts programme working with partner primary and secondary schools as well as local care homes, outside arts agencies and organisations, engaging groups in all art forms.

We host the *Summer Sizzler* annual community event where 250 pupils from across Wallasey and New Brighton come to Weatherhead to showcase dance and song developed using specialist practitioners provided by Weatherhead.

We have developed links with cultural organisations including FACT and the Liverpool Museums.

Our community links enrich our students' school experience and offer unique opportunities to develop their social, communication, organisational and teamwork skills.



Artsmark
Gold Award
Awarded by Arts
Council England



FROM YEAR 7 THROUGH TO SIXTH FORM

Weatherhead has a very successful mixed Sixth Form made up of over 350 students studying over 36 different courses, both vocational and academic.

We have a large and committed team of specialists to support and encourage all our students with whatever they need, from drop-in sessions, subject clinics and regular

progress updates to an informal chat over coffee. We are also fortunate to have dedicated staff focused on the health and well-being of our students.

We want all our students to enjoy their educational journey at Weatherhead and to flourish as a result in any walk of life that they choose.



The Sixth Form offers you:

- Outstanding pastoral support – a team of dedicated Form Tutors and specialist Sixth Form staff ensure that every student has the opportunity to achieve their full potential
 - A Level Results data for last year:
A* - E 99% A* - B 39% A* - C 74%
 - Specialist, award-winning careers advice on Higher Education, Further Education and employment
 - Continued personal development through a variety of enrichment and leadership opportunities
 - A Scholars' Programme to prepare our most able students for the top universities
 - Voluntary work placements within the local community with a view to continued personal development
- A curriculum that is created around your option choices
 - A wide range of academic and vocational courses, which will provide successful routes into university, college or employment
 - High quality teaching provided by a team of expert Key Stage 5 teachers who are committed to your success



Careers Education, Information, Advice and Guidance (CEIAG)

In line with the Government's Career Strategy (October 2018), Weatherhead High School has adopted The Gatsby Benchmarks for Careers Education, Information, Advice and Guidance to provide a world class careers programme that will help our young people choose the career that is right for them. Students from years 7-13 have access to our Careers software 'START' which they can use at school or home on any device. Throughout the year there are a number of Careers events which support students' understanding of employability skills and the world of work. All students also have access to the Future Choices Fair which takes place in the Summer term.

Throughout the year students are able to request an interview with Miss Smith Guidance Co-ordinator to discuss their future aspirations. Year 11 and Year 13 students will have a 1-1 interview with the Guidance Co-ordinator to discuss future destinations and applications. We will prioritise students to be given an interview in the Autumn term depending on need and personal circumstances. There are also drop-in sessions for both students and parents/carers – please see the website for details.

The school enjoys extensive links with businesses, community organisations and universities. We work closely with Wirral Young Chamber of Commerce which provides our students with the best possible opportunities to engage with employers. Through these contacts we can offer a full range of enrichment activities, work experiences, volunteering placements, mentoring and extra-curricular activities.



Weatherhead High School Careers Guidance
The Wirral Young Chamber of Commerce

TALK TO US!

Future Choices
Higher Education
Enterprise
Apprenticeships
Business and Industry
Skills for Employment
Further Education
Work Based Learning
Skills for Employment
Community Engagement
Volunteering
International Links

Full-time **Careers Advisor** based in school
Drop-in Sessions for students and parents
www.weatherheadhigh.co.uk/futurechoices
☎ 0151 631 4400 ext 235



HIGHER EDUCATION PREPARATION	CAREERS GUIDANCE	VOLUNTEERING OPTIONS
1:1 personal support	Future Choice Interviews, Future Choice Drop-in Sessions for students and parents	Excellent links with a variety of external agencies for volunteer placement
Personal Statement and UCAS Support Sessions	Work Experience and Placements	Duke of Edinburgh's Award Scheme
A range of university speakers to offer guidance and advice	Work Related Learning Days	Excellent links with NHS Healthcare organisations
Higher Education Fair	Personal coaching and interview training	Placements outside school e.g. Scouting movements teaching younger students' Music, Dance and Martial Arts
University Trips and Residentials (Russell Group/ Oxbridge/National and Local)	Community Outreach and Volunteering	Placements within school departments e.g. cross curricular mentoring and support to younger students, ICT, Business and Enterprise
University of Liverpool Scholars' Scheme	Introduction to the World of Work Event - Year 7	Bronze to Gold Volunteering Accreditation
Parental Information Sessions on the HE /UCAS Process and student finance	Understanding the World of Work Event - Year 10	Charity Fundraising
Weatherhead Scholars' Programme	Business Enterprise Events	National Citizenship Services
Medlink and Vetslink	Communications and Marketing Work Experience	

USEFUL CONTACTS FOR STUDENTS STARTING AT WEATHERHEAD

If you have any concerns or questions, we have a team here ready to help and support.

Student Services Office: For enquiries related to uniform, payments for trips and administering medication.

KS3 Academic & Pastoral Support Worker (Year 7): Miss Brough
For any concerns or questions regarding your daughter's well-being and to support her academic progress.

KS3 Academic & Pastoral Support Worker (Year 8): Miss Manley
For any concerns or questions regarding your daughter's well-being and to support her academic progress.

KS3 Academic & Pastoral Support Worker (Year 9): Miss Robinson
For any concerns or questions regarding your daughter's well-being and to support her academic progress.

Director of KS3: Miss Smith

KS4 Academic & Pastoral Support Worker (Year 10): Miss Yates
For any concerns or questions regarding your daughter's well-being and to support her academic progress.

KS4 Academic & Pastoral Support Worker (Year 11): Mrs Luscombe
For any concerns or questions regarding your daughter's well-being and to support her academic progress.

**Assistant Headteacher, Director of Quality and Standards at KS4:
Mrs Walton**

Learning Support/Special Educational Needs and Disabilities: Mr Morris –
For SEND/Learning Support queries

Deputy Headteacher, Student Services: Miss Sullivan

School Main Reception Telephone Number: 0151 631 4400
To report a student absence: 0151 631 4410 (Direct Line)
School email address: askus@weatherheadhigh.co.uk

Visit www.weatherheadhigh.co.uk for school information, news and calendar.

Parents may also wish to follow our news updates
on Twitter @WeatherheadHigh

NOTES

IMPORTANT DATES 2019-2020

AUTUMN TERM 2019

INSET (Teachers)	Monday 2 September
INSET (Teachers)	Tuesday 3 September
Open (Students)	Wednesday 4 September (Years 7-12 only)
Open (Students)	Thursday 5 September (Years 13)
Close (Students)	Thursday 24 October
INSET (Teachers)	Friday 25 October
HALF - TERM MONDAY 28 OCTOBER - FRIDAY 1 NOVEMBER	
Open	Monday 4 November
Close	Friday 20 December
CHRISTMAS HOLIDAY MONDAY 23 DECEMBER 2019 - FRIDAY 3 JANUARY 2020	

SPRING TERM 2020

Open	Monday 6 January
Close	Friday 14 February
HALF-TERM MONDAY 17 FEBRUARY - FRIDAY 21 FEBRUARY	
Open	Monday 24 February
Close	Friday 3 APRIL
SPRING BREAK MONDAY 6 APRIL - FRIDAY 17 APRIL	
(NB: Good Friday 10.04.20 & Easter Monday - Monday 13/04/20)	

SUMMER TERM 2020

Open	Monday 20 April
	NB: Bank Holiday - Monday 04.05.20
Close	Friday 22 May
HALF-TERM MONDAY 25 MAY - FRIDAY 29 MAY	
Open	Monday 1 June 2020
Close	Wednesday 15 July 2020
A Level Results Day: (13 AUGUST) GCSE Level Results Day: (20 AUGUST)	