



# PIT EQUIPMENT

*HIGH PERFORMANCE SUPPLY*

**interex**  
MOTORSPORT



**Founded in 1997, Interex Motorsport is an independent UK based company that specialises in the export of motorsport components and accessories across the globe. We supply Race Teams, Constructors and Tuning Shops worldwide. With competitive prices, and fantastic service we can supply urgently needed parts and equipment immediately.**



Winners of the Queen's Award for Enterprise: International Trade 2011

INTRODUCTION TO INTEREX	2
CONTENTS	3
CHASSIS SET UP EQUIPMENT	4
WHEEL ALIGNMENT	5
TYRE WARMERS, PRESSURE GAUGES, DUROMETERS & PYROMETERS	6
JACKS, STANDS & RAMPS	7
PADDOCK TRANSPORTATION	8
WHEEL GUNS	9
REFUELLING	10
DATA CAPTURE & COMMUNICATION	11
SEAMLESS WALLING & FLOORING	12
GANTRY & POWER HOODS	13
BARRIERS, MARQUEES, AWNINGS & HOSPITALITY	14
PIT STANDS & FLIGHT CASES	15
TOOL CABINETS, WORK STATIONS & CAR TRANSPORT CASES	16
SAFETY, LUBRICANTS & CONSUMABLES	17
WHO WE ARE - WHAT WE DO - HOW WE DO IT	18



# Chassis Set Up Equipment

A vital aspect of car set up is static weight distribution. Setting the corner weights accurately creates the optimal balance weight and cross weight percentages which are critical in obtaining perfect wheel balance across the tyre contact area.

## Corner Weight Scale System

Interex offers a wide range of corner weight scale system, scale pad ramps, levellers and set up racks from world leading manufacturers Intercomp and Longacre. Whether you need an entry level wired set up or a top of the range wireless systems let us find the solution that suits you.



## Scale Pad Levellers



## Scale Pad Ramps



## Set up Racks





# Wheel Alignment

One of the most important aspects of a safe race car is the wheel alignment or tracking; correct set up ensures safe and predictable vehicle control. It is also one of the key tyre maintenance factors to ensure optimum performance, even tyre wear and a maximised tyre life through accurate identification of wheel alignment issues.

Interex are distributors for world leading manufacturers of Garage Equipment and supply a variety of wheel alignment tools as well as digital and analogue Castor/Camber gauges to ensure optimal chassis set up.

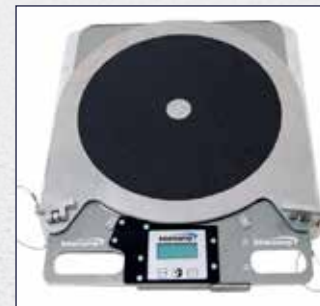
## Castor & Camber Gauges



## Optical Alignment Gauge AGO40 & AGO40L



## Steering Turntable/Turnplates



The industry standard alignment gauge. The AGO40 has been in use since the mid-sixties with almost every garage and tyre shop using a set. It requires no special skills to accurately check the alignment of any vehicle. Quick and easy to set up, tracking angles are measured in degrees/minutes, which can be converted into millimetres or fractions of an inch giving accurate and consistent results. The laser model casts a beam onto the target plate making it easier to view the reading. These can be packed away flat for easy transportation and storage. A must for any modern workshop



# Tyre Warmers, Pressure Gauges, Durometers & Pyrometers

To ensure optimal performance it is vital that tyres are kept in good condition and at their correct pressures. Monitoring tyre temperature helps determine the optimum pressure, camber and alignment settings as well as ensuring maximum tyre life. To get the best race winning performance out of your tyres Interex supply a comprehensive range of Pressure Gauges, Tread Depth Gauges, Durometers and Pyrometers. We also supply race teams with bespoke Warming Blankets as well as Storage Racks and Trolleys.

## Tyre Warmers



## Pyrometers



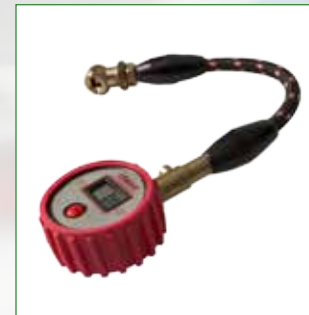
## Pyrometer Brake & Tyre Probes



## Tyre Tread Depth Gauges



## Tyre Pressure Gauges



## Durometers





# Jacks, Stands & Ramps

For use in garage, pit and paddock Interex offer a range of lifting aides to assist in preparing vehicles on race day. Including innovative solutions such as the GoJak, EvoJack and Airjack Carlifter Systems – regardless of which form of racing you undertake, we can supply solutions that aim to ensure set-up and repair are as efficient and easy as possible.



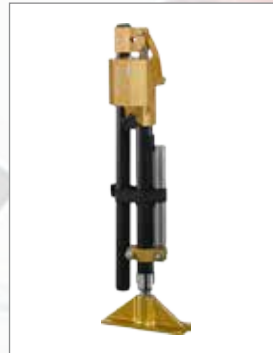
## GoJak Vehicle Jacks

The GoJak self-loading dolly was designed to counteract the limitations of traditional jacks and dollies. The simple to use design allows for the efficient movement of vehicles around the workshop, along with a wide range of GoJak dollies and accessories to meet your requirements.



## Chassis Stands

Interex can supply a wide range of Chassis Stands in a variety of heights & widths to fulfil a number of requirements in the pit/paddock/garage area. Stands are supplied in pairs.



## EvoJack

Interex are distributors for Evocorse who have produced the 'EvoJack' ultra-fast hydraulic rally jack. Capable of raising a rally car 27cm in just 7 strokes; it is an easy to use solution for emergency tyre changes or tyre swaps between rally stages.



## Quick-lift Jack

Suitable for a wide range of vehicles; Interex can supply a range of Quick-Lift Jacks that are manufactured from high-grade mild steel with a durable powder coated finish. These Jacks feature an extra-long detachable handle for excellent leverage and nylon roller wheels to allow rapid manoeuvrability.



## Airjack Systems & Safety Props

Airjacks systems are used by race teams throughout the world - Touring Car, Sports Car, Saloon Car and GT series. Airjacks are designed to lift the car with the least amount of effort and in the fastest possible time.



## Low Rise Vehicle Ramps

Ideal for use with lowered vehicles and race cars; Low Rise Vehicle Ramps elevate the vehicle an extra 70mm, allowing for safer trolley jack access.



# Paddock Transportation

To aid with the transportation of racing components and tools around the paddock area Interex offer high quality solutions from Tyre & Battery Trolleys through to Towable Pit Carts designed to your bespoke specifications – making life in the paddock slicker.



## Stainless Steel Wheel & Tyre Trolley

Ideal for moving wheels and tyres at race meetings and at the workshop, this low level trolley has a tubular design for great appearance and optimum strength. Constructed from T304 stainless steel and hand polished to a mirror finish this almost looks too good to be used! An optional A-frame is also available with an M12 Rod End included to connect the trolley to a paddock vehicle.



## Mini Folding Pit Trolley

Manufactured to excellent quality standards and durable enough to cope with the demands of a modern paddock. Spacious enough to transport wheels, tyres, tools and even Euro bins, this trolley can be pulled by hand or connected to a paddock vehicle using an M12 Boss. The Folding version is compact and sturdy; constructed in steel with a durable silver/grey powder coat. This trolley is equipped with a brake and 100mm castors ensuring easy steering.



## Battery Trolley

These Battery Trolleys are hugely useful in transporting slave batteries in the workshop, pit or paddock. Designed with a removable handle for easier transportation to and from events and constructed from mild steel for sturdiness with a silver/grey powder coat for maximum durability



# Wheel Guns

Interex are proud to work closely with Dino Paoli supplying the very best wheel guns as well as pneumatic and cordless impact wrenches for all forms of motorsport. Dino Paoli set the standard in wheel gun design and manufacture supplying not only F1 teams but to all levels of motorsport. Paoli Pit Stop guns are primarily designed for use with centre lock wheels where nuts are handed for use on specific sides of the car. To aid quick removal the guns themselves are also handed and colour coded.



## Paoli Accessories & Servicing

Interex also supply a full range of accessories including air bottles, connectors, covers, service kits, compressors and much more. Additionally Interex also provide a fast wheel gun servicing and rebuilding system with all work undertaken at the Dino Paoli factory.



## Bottle Trolleys

To enable easy movement of air bottles around the paddock or pitlane – Interex supply an Air Bottle Trolley Kit produced by Dino Paoli – the trolley includes a mounting point for an air pressure regulator, easy hold handle and oversized castors for easier positioning.



## Wheel Gun Bag



## Fast Reverse System



## Connector

Eliminate twists and tangles in airlines with this turning connector. The articulated joint turns through 90 degrees and swivels through 360 degrees on both ends giving you greater gun control every time you pick it up.

# Refuelling

Interex offer a number of refuelling systems designed to the highest safety standards. From FIA Pit Lane Refuelling Rigs to Refuelling Bottles from leading manufacturers Staubli and ATL – these products offer a safe and reliable solution to rapid pit and paddock refuelling, maximising efficiency and minimising pit stops.

Refuelling Probes & Valves in single or double configurations are designed to ensure fast, safe and easy fuel transfer. The probes are FIA approved ensuring they can be used in a vast range of competitions and are available in a choice of diameters.

The heat reflective covers are designed to reduce fuel temperatures in hotter climates by operating in two ways. The cover firstly retains the cool temperatures within the bottle and also reflects the hotter ambient temperatures ensuring that the bottle can be left in pit crew allocated positions for longer, without the fuel effectiveness being reduced.

The ATL Refuelling Rig Weighing System is designed to meet Le Mans endurance race regulations (Article 2 of the ACO Appendix A Technical Regulations) where Scrutineers monitor fuel use



**Male Refuelling Probes**



**Heat Reflective Cover**



**Weighing System**



**Refuelling Probe Handles**



**Refuelling Bottles & Stands**

The ATL Refuelling Bottle provides rapid pit & paddock refuelling.



**FIA Pitlane Refuelling Rig**

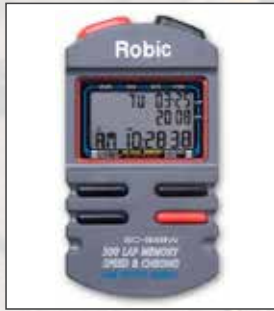


# Data Capture & Communication

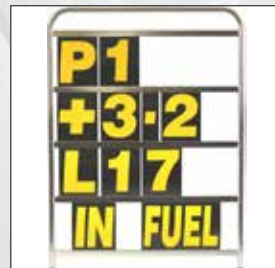
Essential in all forms of Motorsport; Interex supply a range of aides to ensure clear communication and information flow between driver and crew - Pit Boards, Stopwatches, Intercoms & Headsets and Data Capture equipment.

The LED alternative to traditional Pit Boards is easier to read and benefits from an adjustable brightness level - perfect for day and night racing.

Whether you are an amateur racer or a hardened rally driver speak to us about your requirements.



## Stopwatches & Co-Pilot Watches



## Intercoms & Pit Comms.

## Pit Board Kits & LED Timing Boards



# Seamless Walling & Flooring



## Pit / Garage Walling

Working in partnership with Quentor Interex can offer bespoke solutions for pit walling based on your specific criteria. As well as traditional pit wall frame systems, we can also offer a 'Fast-Track' panel system which slots together in a fraction of the time to form a completely flush wall. Made from lightweight aluminium, it has been designed to ensure maximum strength and longevity of service. This fully flexible and modular system can be adapted to meet any requirements (shelving, workbenches, flat-screen monitors etc). We can also provide the perfect transportation case to safely store and move your system – please contact us with your requirements to see how we can help. Quentor now offer a lower-cost paintless panel system which is said to provide the same benefits and features enjoyed by the company's other models - at a more affordable cost.

## Flooring

Interex can supply specialised Motorsport flooring; designed and manufactured to stand up to the rigours of pit life. Measuring 400mm x 400mm – floor tiles lock together with minimal effort, are antistatic, anti-slip and extremely quiet to walk on. Tiles can be supplied in an array of colours, and team logos can easily be incorporated into the design. We can also supply a 'Floortrax Trolley' to aid transportation.

LED Floor Tiles are also available to aid working underneath the car, these tiles come with a power control unit allowing them to be dimmed when the car is out of the pitbox.



# Gantry & Power Hoods

Interex offer a number of gantry and lighting solutions, designed to be assembled quickly and securely – allowing lighting and Powerhoods to be hung safely. Please contact us to see how we can help you.



An essential part of any professional race car preparation area; Interex supply high-quality Powerhoods providing essential outputs without cluttering up floor space. Our Powerhoods are a bespoke product designed to cater for specific team requirements.



# Barriers, Marquees, Awnings & Hospitality

Interex offer a wide range of Spectator Barriers, Marquees, Awnings and innovative Hospitality structures to meet any specification.

For those who do not have the luxury of a large purpose built race transporter; we can supply you with a motorsport awning to transform your panel van into an impressive race support vehicle; alternatively for those with large box and articulated trailers we can supply a modular framed awning that will look great in any race paddock.

Choose from Free Standing Structures, Frontier Windouts, Jumbo Windouts, Modular Frame and Pop Up Shelters with spectator barriers to suit your race day needs.







## Pit Stands & Flight Cases

To ensure valuable equipment stays safe and dry – a robust Pit Perch is a must for all teams. Interex offer Pit Perches to suit a variety of budgets. For teams operating on tight budgets there are a number of quality 'off the shelf' standard options; for larger budgets bespoke Pit Perches can be built exactly to customer specifications. Interex is proud to be a supplier of Quentors Traditional bespoke high quality Flight Cases & Storage Equipment for the Motorsport Industry.



# Tool Cabinets, Workstations & Car Transport Cases

Interex offer a wide variety of standard and special purpose bespoke flight cases, rack systems, tool cabinets and work station furniture.

We are proud to work in close partnership with Quentor, motorsport's leading manufacturer of flight cases and work station equipment. Using intelligent design and high quality engineering, Quentor's & Lista's products are built to last for years to come.

Smart design coupled with high quality composite materials mean a more lightweight and compact case resulting in reduced transportation costs – offering true value for money.

## Mobile Tool Cabinets



Options Available for Size & Colour

## Folding Workstation Cases



## Race Car Transport Cases





# Safety, Lubricants & Consumables

Ensuring that racers and teams are safe and protected is of paramount importance on race day.

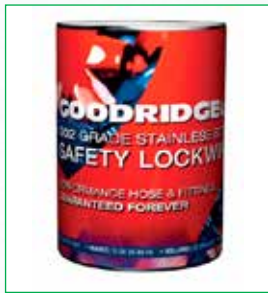
Interex offer a vast selection of safety equipment from fire extinguishers through to goggles and clothing. Essential race day consumables such as mechanics gloves, paper rolls and lubricants can also be supplied with your equipment/parts deliveries; allowing teams to focus their efforts on the track. Let Interex take the hassle out of ordering race day consumables, including hazardous products. Everything can be there for you on the day - whatever your needs let Interex assist.

## Equipment

## Safety



## Consumables



# Who we are - What we do - How we do it



**Interex Motorsport** are UK based distributors and exporters of a full range of motorsport parts, equipment and accessories.

Supplying Race & Rally Teams, Constructors and specialist Tuning shops across the world we have established ourselves as one of the UK's leading exporters of specialised Motorsport components & equipment.

From 'Interex House' - our purpose built warehouse & office in Suffolk, East Anglia, we supply customers in more than sixty countries as well as the UK.

Our experienced technical sales staff look after our customer's telephone and e-mail enquiries every day. No two enquiries are ever the same and nearly all our quotations are bespoke. Many are for highly specialised components & materials manufactured primarily for Military & Aerospace applications and are able to meet the extreme demands of motorsport. Our experience in these high tech product areas has proved to be extremely useful to designers and constructors. We supply from the worlds leading motorsport manufacturers including Alcon, ATL, Bosch, Goodridge, Lifeline, PWR, Samco, SKF, Super B, Varley Red Top and many more – we also work with over 200 other Motorsport & Aerospace suppliers in the UK, Europe, USA & Japan.

## Rapid Service

If parts are required 'yesterday' we can usually arrange immediate despatch by DHL, FedEx, TNT or UPS. E-mail and telephone enquiries are responded to within 24 hours.

## Consolidated Shipping

We can also consolidate orders from different manufacturers making shipments more cost effective.

## Competitive Prices

With direct accounts with most manufacturers our prices are always competitive.

## Technical Backup

If you need any technical data, drawings or manufacturer's catalogues just ask.

## Can we help you?

Wherever you are based and whatever your needs are it is very likely that we can help. Just contact us and let us know how we might be of service, you will certainly receive a very quick response and hopefully the solution you've been looking for.





# Manufacturers

- |   |   |
|---|---|
|    |    |
|    |    |
|    |    |
|    |    |
|   |   |
|  |  |
|  |  |
|  |  |



**Interex House**

Maitland Road, Lion Barn Industrial Estate  
Needham Market, Suffolk IP6 8NS, UK

**Tel:** +44 (0) 1 449 721 700

[www.interexmotorsport.com](http://www.interexmotorsport.com)  
[sales@interexmotorsport.com](mailto:sales@interexmotorsport.com)