

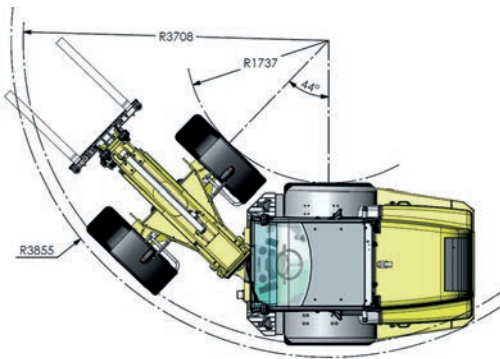
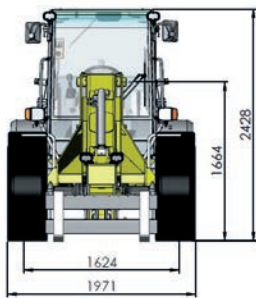
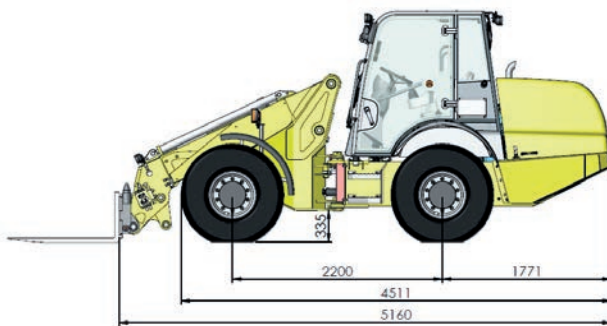
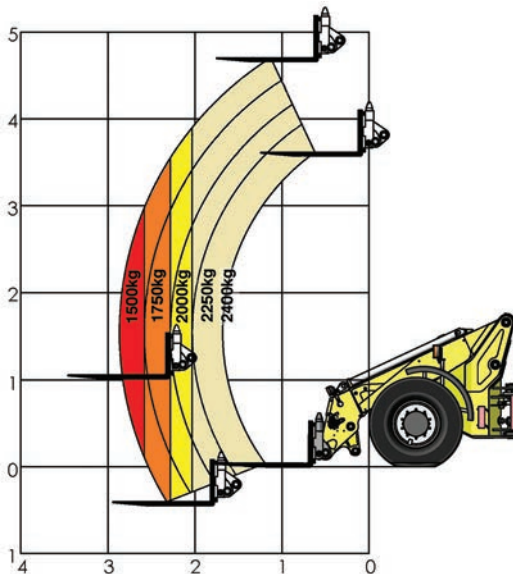


# *FH 225*





# FH 225



## LIFTING CAPACITY:

Max Safe Load	2400kg
At full reach	1500kg

## Engine:

Make	Deutz
Model	TCD 2011 L04W
Displacement	3.6L
Max Power	74.4KW / 100bhp @ 2300rpm
Max Torque	410Nm @ 1600rpm
Fuel	Diesel
Emissions	Euro compliant

## TRANSMISSION:

Gearbox	Powershift
No. of gears	6 Forward / 3 Reverse
Max speed	29kph (option of 39kph)
Axles	Full limited slip differential

## TYRES:

Standard	405/70 R20
----------	------------

## ELECTRICAL:

Battery	644 12V 96 Ah 620CCA
Alternator	95A

## CAB:

ROPS & FOPS certified on rubber mounts

## Hydraulics:

Pump	Load sensing 91L/min
Pressure	250 Bar

## Tank Capacities:

Diesel	90L
Hydraulic	80L

## Brakes:

Full hydraulic power brakes on both axles

## LIFTING HEIGHT:

Max lift height	4.69m
Max height reach	1.20m

## CYCLE TIMES:

Lifting	4.8s
Lowering	5.4s
Extending	3.9s
Retracting	3.0s
Reverse Tilt	2.3s
Forward Tilt	4.2s

## HEADSTOCK:

Standard	Pin & cone (cat II)
Rotation	170°
Self Levelling	Standard with slave cylinder

## FEATURES:

- Large glass cab for excellent visibility
- Large 2 door cab for easy access
- Hydraulic hoses on outside of boom for easy maintenance
- Hydraulic load sensing pump
- Adjustable steering column
- Adjustable suspension seat
- Ergonomic joystick grip with FNR & gear change
- Super bright warning lights of fully featured instrument display
- Excellent rough terrain performance from permanent 4 wheel drive
- Heavy duty construction
- Road lights
- Front & rear work light
- Reverse alarm

## NC Engineering (Hamiltonsbawn) Ltd

2 Killyrudden Road, Hamiltonsbawn  
Richhill, Co Armagh  
Northern Ireland BT61 9SF

Tel: +44 (0) 28 3887 1970  
Fax: +44 (0) 28 3887 0362

Email: [sales@nc-engineering.com](mailto:sales@nc-engineering.com)  
Web: [www.nc-engineering.com](http://www.nc-engineering.com)

