



BLAIN PRODUCTS AVAILABLE FROM HYDRATEC

BLAIN EV AND KV SPARE PARTS LIST

**BLAIN PRODUCTS
AVAILABLE FROM STOCK
AND TO ORDER**

BLAIN EV Spare Parts List

Pos.	No.	Item	O-Ring-Size		
			No.	3/4"	1 1/2"
1	FS	Lock Screw - Flange	FO 26x2P	47x2.5P	58x3P *
	FO	O-Ring - Flange	EO 9x2P	9x2P	9x2P
	1F	Flange - By Pass	UO 26x2V	39.34x2.62V	58x3V
	EO	O-Ring - Adjustment	WO 5.28x1.78V	5.28x1.78V	5.28x1.78V
	1E	Adjustment - By Pass	VO 23x2.5V	42x3V	60x3V **
	UO	O-Ring - By Pass Valve	7O 5.28x1.78P	9x2P	9x2P
	U	By Pass Valve	XO 13x2V	30x3V	47x3V
	UD	Noise Suppressor	HO 5.28x1.78V	5.28x1.78V	5.28x1.78V
	UF	Spring - By Pass	SO 5.28x1.78P	5.28x1.78P	5.28x1.78P
				MO 26x2P	26x2P
2		Adjustment - Up Acceleration	* FO by 4F 2 1/2" is 67x2.5P		
3		Adjustment - Up Deceleration	** 90 Shore		
4	EO	O-Ring - Adjustment	O-Ring: V=FKM-Viton		
	4E	Adjustment - Up Levelling	P=NBR-Perbunan		
	4F	Flange - Check Valve			
	FO	O-Ring - Flange			
	VF	Spring - Check Valve			
	W	Up-Levelling Valve			
	WO	O-Ring - Up Levelling Valve			
	VO	Seal - Check Valve			
	V	Check Valve			
	W6	Screw - Check Valve			
5		Adjustment - Up Stop			
6		Adjustment - Down Acceleration			
7	7F	Flange - Down Valve			
	FO	O-Ring - Flange			
	7O	O-Ring - Adjustment			
	7E	Adjustment - Down Valve			
	UO	O-Ring - Down Valve			
	XO	Seal - Down Valve			
X	Down Valve				
XD	Noise Suppressor				
F	Main Filter				
8		Adjustment - Down Deceleration			
9	9E	Adjustment - Down Levelling			
	EO	O-Ring - Adjustment			
	9F	Spring - Down Valve			
	Y	Down Levelling Valve			
H	H	Manual Lowering - Self Closing			
	HO	Seal - Manual Lowering			
S	SE	Adjustment - Screw			
	SM	Hexagonal - Screw			
	MS	Grub Screw			
	SO	O-Ring - Nipple			
	SZ	Nipple			
A+B	SF	Spring			
	SK	Piston			
	MM	Nut - Solenoid			
	AD	Collar - Solenoid			
	M	Coil - Solenoid (indicate voltage)			
	AR	Tube - Solenoid 'Up'			
	MO	O-Ring - Solenoid			
	AN	Needle - 'Up'			
	AF	Spring - Solenoid 'Up'			
	AH	Seat Housing - 'Up'			
C+D	AS	Seat - Solenoid 'Up'			
	MM	Nut - Solenoid			
	M	Coil - Solenoid (indicate voltage)			
	DR	Tube - Solenoid 'Down'			
	MO	O-Ring - Solenoid			
	DF	Spring - Solenoid 'Down'			
	DN	Needle - 'Down'			
	DK	Core - Solenoid			
	DG	Seat Housing with Screen-'Down'			
	FD	Filter Solenoid			
DS	Seat - Solenoid 'Down'				

Solenoid Valves

Adjustments

Flow Valves

In case of down leakage, replace and test in the following order (DS) & (DN), (XO), (VO), (WO), (FO) + (HO).

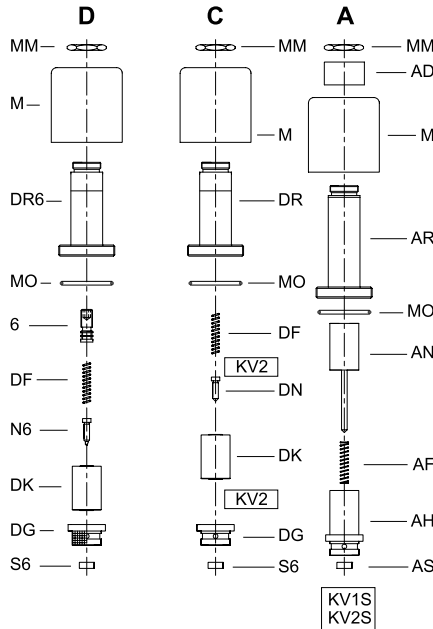
⚠ Taper threads: Do not exceed 8 turns of piping into the valve connections.

To order EV 100, state pump flow, empty car pressure (or flow guide size) and solenoid voltage.
Example order: EV 100, 380lpm, 18 bar (empty), 110 AC ≡ EV 100/4/110AC

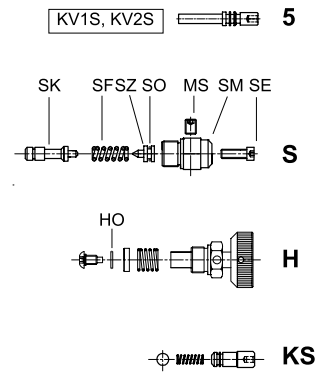
BLAIN KV Spare Parts List

Pos. No.	Item
1	1F Flange - Bypass
1E	Adjustment - Bypass
EO	0-Ring - Adjustment (3,5x1,5 - P)
U	Flow Guide - Bypass
UO	0-Ring - Bypass (17x1 - V)
UF	Spring - Bypass
5	5 Adjustment - Up Stop
6	6 Adjustment - Down Acceleration
7+9	7E Adjustment - Down Valve
9F	Spring - Down Valve
YO	0-Ring - Flow Guide (10x1 - V)
XO	Seal - Flow Guide (5,28x1,78 - V)
XT	0-Ring Disc
FI	Filter - Down Valve
X	Down Flow Guide (Brass)
Y	Down Levelling Flow Guide (Steel) - KV2
Y	Down Flow Guide (Steel) - KV1
S	SE Adjustment Screw - Relief Valve
SM	Hexagonal - Relief Valve
MS	Locking Screw
SO	0-Ring - Nipple
SZ	Nipple - Relief Valve
SF	Spring - Relief Valve
SK	Piston - Relief Valve
H	H Manual Lowering - Self Closing
HO	Seal - Man. Lowering (0-Ring 5,28x1,78 - V)
HA	Adjustable Manual Lowering
KS	KS Slack Rope Valve
A	MM Nut Solenoid
AD	Collar Solenoid
M	Coil Solenoid (indicate voltage)
AR	Tube Solenoid 'Up'
MO	0-Ring Solenoid
AN	Needle Solenoid 'Up'
AF	Spring Solenoid 'Up'
AH	Seat Housing 'Up'
AS	Seat Solenoid 'Up'
C+D	M Coil Solenoid (indicate voltage)
C	DR Tube - Solenoid 'Down', w/o adj. 6
D	DR6 Tube Solenoid 'Down', with adj. 6
D	MO 0-Ring Solenoid
D	DF Spring Solenoid 'Down'
C	DN Needle Solenoid 'Down'
D	N6 Needle Solenoid 'Down' (Nipple)
C	HN Needle Solenoid 'Down'
C	DK Core Solenoid 'Down'
C	DG Seat Housing 'Down' (Solen.D with screen)
C	S6 Seat Solenoid 'Down'
C	CO 0-Ring Seat Housing
Z	ZA Cylinder Thread Connection
V	Check Valve
VO	0-Ring Check Valve (5,28x1,78 - V)
F	Main Filter
L	L Gauge Shut Off Cock
0-Rings: V=FKM-Viton P=NBR-Perbunan	

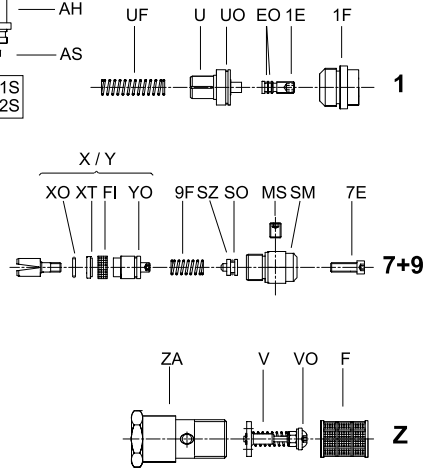
Solenoid Valves



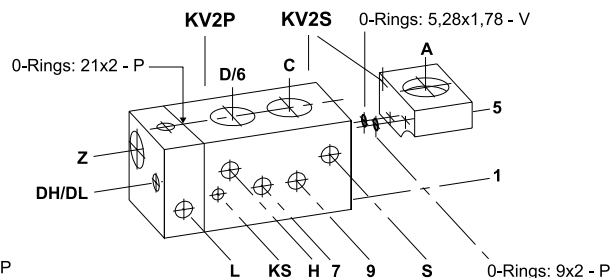
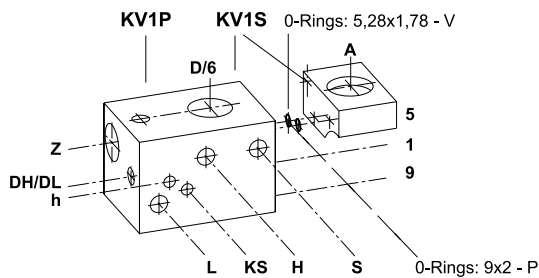
Adjustments



Flow Valves



In case of down leakage, replace and test in the following order:
S6, N6, HO, V complete, XO, (2x XO with KV2).





Available from **Hydratec**
(0)1252 871664



Hydratec Lift Services Limited
Unit 1B, Blackbushe Business Village
Yateley, Hampshire
GU46 6GA

t · +44 (0) 1252 871664
f · +44 (0) 1252 873601
e · sales.south@hydratec-lifts.co.uk

Hydratec Lift Services Limited
Unit A5, Axis Point Hareshill Business Park
Hill Top Road, Heywood
OL10 2RQ

t · +44 (0) 1252 871664
f · +44 (0) 1252 873601
e · sales.north@hydratec-lifts.co.uk

© Copyright 2015, Hydratec Lift Services Limited,
All rights reserved.

*The technical and performance details contained within this document have been obtained from original manufacturers' product descriptions. Hydratec Lift Services Ltd are providing this information as a guide only and cannot be held responsible should any performance promises or technical details be incorrect.

we service your clients as you