

Quelfire QWR CE Marked Fire Collars prevent the spread of fire where PVC, HDPE & PP pipes penetrate fire compartment walls and floors.



QWR CE Marked Fire Collars



QWR CE Marked Fire Collar installed on concrete floor

FEATURES & BENEFITS

- ❏ Tested to BSEN 1366-3: 2009
- ❏ Classified according to EN 13501-2: 2007 + A1: 2009
- ❏ CE Marked
- ❏ Up to 4 hour fire rating
- ❏ Suitable for PVC, PVC-U, PE, HDPE, MDPE & PP pipes
- ❏ Available for 25-160mm pipes
- ❏ Can be retrofitted
- ❏ Performance unaffected by weathering (Type X Durability)

REGULATIONS

Building Regulations impose limitations on all pipes passing through fire compartment walls and floors. QWR CE Marked Fire Collars allow plastic pipes to meet the requirements of the Building Regulations. QWR CE Marked Fire Collars have been tested according to BSEN 1366-3: 2009 where pipe diameters of up to 160mm have met insulation and integrity criteria for this standard for up to four hours.



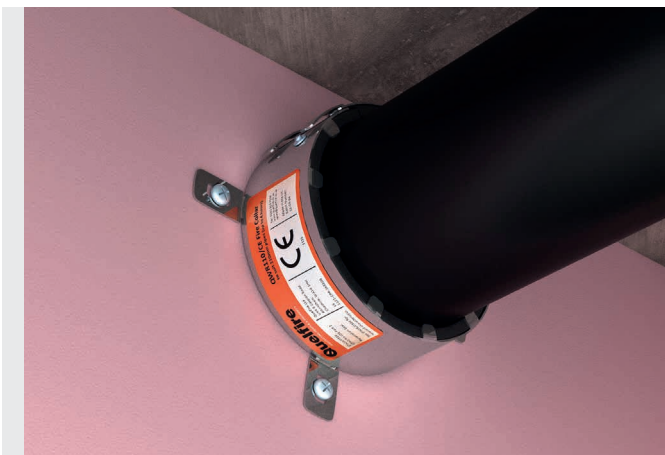
The Warringtonfire Logo is used by Quelfire Limited in the United Kingdom under licence from Warringtonfire and is evidence that the products denoted as 'Tested by Warringtonfire' were tested to BSEN 1366-3: 2009 in England between September 22nd 2015 and June 21st 2019.



This product is CE Marked.

COMPOSITION

The QWR CE Marked Fire Collars consist of a continuous pressed stainless steel flexible shell containing high performance graphite based intumescent material which reacts under the influence of heat to exert pressure on the pipe as it softens to form a carbonaceous char which provides an effective insulation plug thus preventing smoke and fire passing through to the adjoining compartment. The QWR CE Marked Fire Collar has built in fixing lugs which are used to secure it to the structure.



QWR CE Marked Fire Collar installed on plasterboard wall

APPLICATION / INSTALLATION

Quelfire QWR CE Marked Fire Collars should be used where a plastic pipe penetrates a fire rated wall or floor. For vertical pipework, one unit should be installed to the underside of the floor. For horizontal pipework one unit should be fitted to each side of the wall. The soffit of the floor or the face of the wall must be smooth and where there are irregularities in the surface, the space between the flange of the unit and floor or the wall should be made good using QuelStop Acrylic Sealant. The QWR CE Marked Fire Collar should be fed around the plastic pipe, securing the ends together by passing the tongues on one end through the slots on the other end. The tongues should then be bent back and the unit secured to the structure using the integral fixing lugs. The QWR Collar must be secured to concrete and masonry construction using steel sleeve anchors. Where fitting to a plasterboard partition wall one QWR CE Marked Fire Collar should be installed on either side of the partition and fixed using through-bolts or steel hollow wall sleeve anchors.

QWR CE Marked Fire Collars can also be installed in conjunction with the QuelStop Fire Batt using steel pigtail screws to secure it to the batt. Please refer to Quelfire Technical department for details.

Quelfire QWR Fire Collars have also been tested generally in accordance with the BS EN 1366-3: 2009 fitted to plasterboard ceilings, please contact Quelfire technical department to discuss your application.

TECHNICAL SUPPORT & GUIDANCE

Should you require any further information regarding this product, please don't hesitate to contact Quelfire Ltd.

DURABILITY

Tested to Type X durability which means the QWR Fire Collars can be installed in conditions exposed to weathering. QWR CE Marked Fire Collars are expected to last the lifetime of the building.

PERFORMANCE

Product Code	Pipe Size (mm)	Approx. space needed around pipe to fit QWR incl. fixing logs (mm)	Recommended hole diameter (mm)	QWR Length (mm)	Fire Rating
QWR25/CE	25Ø	40	27Ø	50	Up to 4 Hours
QWR32/CE	32Ø	40	34Ø	50	Up to 4 Hours
QWR40/CE	40Ø	35	42Ø	50	Up to 4 Hours
QWR50/CE	50Ø	35	52Ø	50	Up to 4 Hours
QWR55/CE	55Ø	35	57Ø	50	Up to 4 Hours
QWR63/CE	63Ø	55	65Ø	50	Up to 4 Hours
QWR75/CE	75Ø	50	77Ø	50	Up to 4 Hours
QWR82/CE	82Ø	40	84Ø	50	Up to 4 Hours
QWR90/CE	90Ø	50	92Ø	50	Up to 4 Hours
QWR110/CE	110Ø	40	112Ø	50	Up to 4 Hours
QWR125/CE	125Ø	45	132Ø	50	Up to 4 Hours
QWR160/CE	160Ø	50	162Ø	50	Up to 4 Hours
QWR55/CE/2	55Ø	35	57Ø	50	Up to 2 Hours
QWR110/CE/2	110Ø	35	112Ø	50	Up to 2 Hours
QWR125/CE/2	125Ø	45	132Ø	50	Up to 2 Hours

WARRANTY The Company warrants its products to be free from defects in material and workmanship for a period of 12 months from the date of delivery. The Company's obligation under this warranty is limited, as its option, to the repair or replacement, free of charge, or refund of the net Invoiced price of any part found to be defective, and which, in the Company's opinion, has not been subject to undue wear and tear, accident, alteration, abuse or misuse. Consequent damages are expressly disclaimed. Technical advice from Quelfire whether verbal, in writing or by way of trials, is given in good faith but without warranty. The application, use and installation of the Company's products are beyond the control of the Company, and the purchaser is solely responsible that goods are fit for any particular purpose. In line with the Company's policy of continual research and development, product specifications and availability are subject to change or withdrawal without prior notice.

Quelfire maintain a policy of constant improvement and reserve the right to alter or amend the specifications of their products without notice. Quelfire is a Registered Trademark.