

CONVERTING THE REAL WORLD INTO THE VIRTUAL WORLD

TOTALSIM CAN CAPTURE JUST ABOUT ALL GEOMETRIES, FROM DETAILS AS SMALL AS A MILLIMETRE TO THOSE MANY METRES LONG.

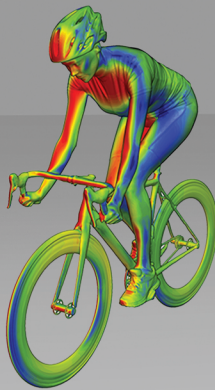
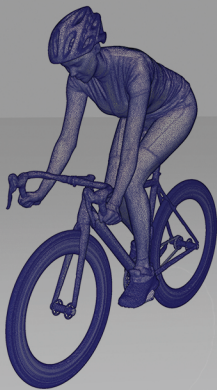
TotalSim have two scanners that allow us to capture different geometries of different scales and detail levels.

Our large scale scanner is exceptionally fast and capable of **sub mm accuracy**. Our fine detail scanner is more accurate and has a smaller scanning field, the resolution is improved to **0.1mm**.

Scanning can cost as little as **£95** depending upon location and complexity.

Straight from scanning to CFD without the requirement of resurfacing.

As experienced engineering consultants, TotalSim are ideally suited to gauge the level of accuracy required for your application. We've also developed a methodology that allows us to do CFD on scanned geometry rather than having to go through the costly process of resurfacing.



TOTALSIM'S SCANNING SERVICES ARE FAST, ACCURATE AND EFFICIENT.

E: scanning@totalsim.co.uk T: +44 (0) 1280 840 316

TOTALSIM

EXPERTS IN
COMPUTATIONAL FLUID DYNAMICS

WWW.TOTALSIMULATION.CO.UK

T: +44 (0) 1280 840 316

 @totalsimltd