



The 2014 Collection

What's up in KLEEMANN?



## THE 2014 COLLECTION

What's up in KLEEMANN?

1. WHAT'S UP IN HIGH SPEED / RISE LIFTS?
2. WHAT'S UP IN CABINS?
  - a. NEW DESIGNS
3. WHAT'S UP IN DOORS?
  - a. NEW DESIGNS
  - b. NEW MECHANISM
4. WHAT'S UP IN ELECTRONICS?
  - a. NEW COP-LOP-BUTTON DESIGN
  - b. VIRTUAL WINDOW
  - c. TALK 2 LIFT
  - d. DESTINATION CONTROL
  - e. NEW KLEMAFONE
5. WHAT'S UP IN WEB TOOLS?
  - a. LIFT TESTER
  - b. DESIGN YOUR LIFT
6. WHAT'S UP IN CABIN INTERIOR MATERIALS?
  - a. WALLS - THE 2014 COLLECTION
  - b. FLOORS - THE 2014 COLLECTION

# What's up in High Speed / Rise Lifts?

## HRS KLEEMANN Lift

KLEEMANN presents  
the new High Speed / Rise Lift  
with max speed up to 4m/sec.

HRS KLEEMANN Lift provides

### • Energy Saving

Features such as LEDs for the car lighting and the standby mode function activate the energy saving mode of the operating panels, the inverter and parts of the controller. Regeneration systems are applied reducing energy consumption up to 60%.

### • Ride Quality

Measurements according to ISO 18738 ensure high quality of the ride comfort. In addition the level of noise and of car vibrations fullfills even the most strict requirements.

### • Design

HRS KLEEMANN Lift is offered with several cabin, COP-LOP and buttons designs which are the result of KLEEMANN's cooperation with the worldwide famous industrial designer Andreas Zapatinas.

### • Innovative services

- Eco Product Design ISO 14006
  - Destination Control (LTP Call Management System)
  - Remote Lift Monitoring
  - Advanced methods used for energy consumption reduction

The Remote Lift Monitoring system is often required for buildings with multiple lifts in order to provide better management.

Features:

Security password

Real time monitoring of the lift status

Remote travel and door commands

Parameter viewing and programming

Error log display and statistics

Clock control travel management



# What's up in Cabins?



## NEW DESIGN

## FUTURE TREND T110

andreas zapatinas | design  
patent pending



### CEILING

Type: Special Ceiling T110  
Light Type: LEDs

### WALLS

Special Melamine Pannels 147  
(Blue)

### CORNERS

Stainless Steel Satin

### FLOOR

Laminate 8630 ASPEN OAK

### HANDRAIL

K2 Stainless Steel Mirror

### MIRROR

Full height / Full width

# What's up in Cabins?

## FUTURE TREND T120

## NEW DESIGN

andreas zapatinas | design  
patent pending

### CEILING

Type: Special Ceiling T120  
Light Type: fluorescent tubes

### WALLS

Special Melamine Pannels 142  
(Green)

### DOOR POSTS

Stainless Steel Satin

### FLOOR

Laminate 8630 ASPEN OAK

### HANDRAIL

K2 Stainless Steel Mirror

### MIRROR

Full height / Full width



# What's up in Doors?



## **NEW DESIGN** FUTURE AUTOMATIC DOOR **FA 710**

andreas zapatinas | design  
patent pending



**NEW DESIGN**

**FUTURE AUTOMATIC DOOR FA 310**

andreas zapatinas | design  
patent pending



**New Premium Mechanism  
for Automatic Cabin  
and Landing Doors**

PREMIUM mechanism offers:

- High performance and low consumption.
- Motorized cabin doors with permanent magnets and VVVF control.
- Larger wheels (diameter 66 mm).
- Lower noise level.
- New locking, more reinforced with rubber-coated wheels.
- Easy to assemble, new system for fixing the mechanism to the frame which saves time.
- Direct fixing of the panels to the plate that improves rigidity.
- Solid guides that reduce noise and friction wearing.



**NEW MECHANISM**

# What's up in Electronics?



## New COP-LOP-Button Design

andreas zapatinas | design  
patent pending



FUTURE  
TREND  
BUTTON  
**FTB**



FUTURE  
TREND  
LANDING  
OPERATING  
PANEL **FTL**  
(BLACK)



FUTURE  
TREND  
CABIN  
OPERATING  
PANEL **FTC**  
(BLACK)



### **Virtual Window** wingage

VIRTUAL WINDOW winGage by DigiGage is one of the world's first immersive architecture & experience design product.

The system adapts the point of view in real time according to the elevator's movement.

With no integration or connectivity to the elevator's internal system, the patent pending "virtual-window" software detects the movement of the elevator cab - so it "knows" whether it is stationary or moving, its direction, speed and location. This analysis is translated to the movement of the content - for example: when the elevator goes up, the viewer's point of view goes up as well, the view on the screen changes (e.g. floor-level objects stay down at floor level) as would occur if there was a real window in the elevator. This synchronizes the sensation the passengers feel with the one that they see - just like in a real transparent elevator. It doesn't stop there, though - certain content objects behave differently than others by escorting the window as it moves. For example - in an ocean world that simulates an underwater elevator, a dolphin will follow the cab while the reef stays at its constant height.

#### Extra Features:

- Floor numbering and floor signage
- Real-Time news and weather
- Building Messaging
- Social Media feature (facebook, twitter etc)



## Talk 2 lift

Talk2lift is the first and only voice-controlled elevator worldwide.

It enables passengers to voice-control the lift by pronouncing the floor number or any other related information (house owner's name, profession, sector/area etc.) supporting multilingual operation. Talk2lift can be adjusted on the electronic board of any elevator cabin and it has been patented in the European Union and bears the CE conformity mark.

Advantages

- Assistance to visually impaired people
- Easy, quick and defect-free access of visitors to the building's habitants (apartments, offices, etc)
- Time saving for visitors in vast buildings (offices, hospitals, public services etc)
- Improved quality of life as a more sophisticated and technologically updated system
- Improved accuracy and reduced defects of moving inside the building



## Destination Control (LTP Management System)

is indicated for:

Destination Control increases the efficiency of the lift application and reduces the waiting times. The passengers enter their destination in touch panel PC's that responds by indicating the lift that is going to be used.

Advantages

- Direct use of the lifts
- Reduces travel time via carefully targeted distribution of the passenger
- High passenger comfort
- Reduces waiting times
- A more efficient utilization of the individual lifts in comparison to conventional controls



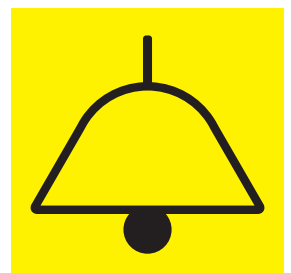
## Klemafon

The extra safety in your elevator

KLEMAFON is an ideal telephone device which provides the safest and most compatible way with the rescue services.

KLEMAFON stands out for:

- practical design, the easy adjustment and the universal use, to new and old elevators, surpassing smartly any technological differences
- full two-way voice communication (full duplex)
- crystal clear quality of voice and sound
- pioneering applications using advanced digital wired and/or wireless technology (Voice / Data, Internet, Ethernet, VoIP)
- full wireless internal communication (2.4 GHz)
- continuous self control for maximum availability of the telephone equipment and consequently use of elevators
- independent and effective filtering of alarms as well as their automatic activation in specific cases (auto alarm)
- its ability of upgrading and expanding their operations as well as the use of various telecommunication providers simultaneously
- diverse safeguards of operation and various security elements for extra protection of users
- fully compliance with European legislation



# What's up in Web tools?

## Lift Tester

KLEEMANN expands its mobile marketing and the provision of pioneering services via mobile devices through its innovative Lift Tester application.

The Lift Tester app utilizes the technological capabilities and sensors of the iPhone and iPad, as well as special algorithms, in order to measure and assess the motion of any lift.

Lift experts and consultants, lift installers as well as end users will be able to compare various vertical transportation technologies and get a complete picture of the lift performance, measuring data such as speed, acceleration, jerk and noise; the application will help them optimize the overall installation and operation of a lift.

Specifically, the application has the following features:

- Measurement of the speed of any lift (with motion direction indication)
- Maximum speed achieved (after the measurement is complete)
- Measurement of acceleration and deceleration
- Noise levels within the cabin
- Send measurement results through email message

This application is already available online at App Store.



## Design your Lift

Design Your Lift is the KLEEMANN Virtual Showroom which integrates successfully the web technology with the lift design.

Through this application, the user can choose materials and feature combinations to create the lift cabin and door of his choice.

The great innovation of the application is that one can upload a photo of the building lift area (floor and wall) and see how the cabin will look like in the building where it will be installed.

To begin follow the steps:

- Choose a cabin from the KLEEMANN Design cabin models collection
- Pick the door of your choice with the option to change the colour, knobs and handles.
- Choose cabin's individual features (handrail, ceiling, landing doors, corners and skirtings, doors etc) from the left menu.
- When the final cabin composition is ready one can print it or send it by an e-mail to KLEEMANN and pose any inquiries.



Available at [www.designyourlift.com](http://www.designyourlift.com)  
at your pc, laptop, tablet or any mobile device.

# What's up in Cabin Interior Materials?



## WALLS -THE 2014 COLLECTION

### HP LAMINATES



Du 1715VV



Du 7401 HG



(HD) 2416 PL



AB 1521



Du 6254 HG



(MT) 2042 G



AB 659



AB 1306 HG



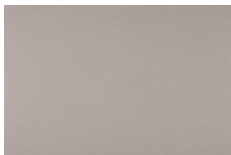
(HD) 2982 PL



AB 383



AB 580



DU 8110



(HD) 2218 PL



Du 5372 HG



(HD) 2228 PL



Du 5410 HG



(HD) 2307 PL

### STAINLESS STEEL



Satin



Mirror



Blue Satin



12LG



Checks

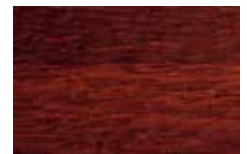


B/A Linen

### WOODEN



IVE 05



IVE07



IVE14

# What's up in Cabin Interior Materials?

## GLASS

---



Yellow Mat 4090



Orange Mat 504090



Red Mat



PS YB9 (green)



PS BM15 (blue)



Mat (white)

## SKINPLATES

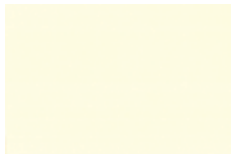
---



DL 41



DL 1



A90 GTA



F12 PPS



B13



PPS13



PPS 93

## ARTIFICIAL LEATHER

---



7004



2308



41



15

## SPECIAL MELAMINE PANNELS

---



144



142



147



145

## SPECIAL SPLIT PANELS

---



M 1785



1322



1323



1823

## SPECIAL SHEETS

---



622 A



LEGUAN COPPER 18

# What's up in Cabin Interior Materials?

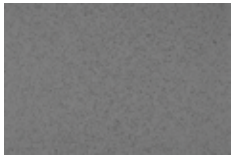


## FLOORS – THE 2014 COLLECTION

### RUBBER FLOORS



Black 6801



Griffon 6768



6674



6603



6602

### CERAMIC TILES



GP5 Nero



GP10b



GP10



Colorado

### ARTIFICIAL GRANITES



Greek Pentelikon



Nero Markuinia



Daino Realle



Regal Pink



Regal Beige



Regal White



Regal Red



Regal Black

### FLOOR LAMINATE



8766



8096



8459



1675



720



8630

## CEILING – THE 2014 COLLECTION



03



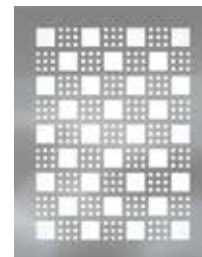
055



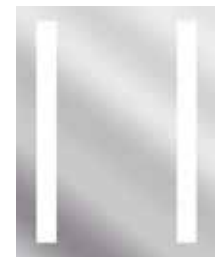
07



010



013



015

**Greece Head Offices - Export Sales**

Kilkis Industrial Area  
P.O. BOX 25, P.C. 61 100 Kilkis, Greece  
T: +30 23410 38100  
F: +30 23410 38200  
headoffice@kleemann.gr

**Turkey KLEEMANN Asansör**

Orta Mahallesi Mesudiye Sokak  
(Sabancı Üniversitesi yanı) No: 8  
Orhanlı 34956 Tuzla / İstanbul Türkiye  
T: +90 216 570 05 00  
F: +90 216 570 05 09  
info@kleemannturk.com

**Serbia KLEEMANN Liftovi**

Golubinačka b.b, Šimanovci  
Beograd, Serbia,  
T: +381 22 409000  
F: +381 22 409090  
office@kleemann.rs

**Romania KLEEMANN Lift Ro**

SStr. Filderman Wilhelm Nr. 4 Bis, 3 District  
Bucharest  
T: +40 314 228917  
F: +40 314 228916  
office@kleemannlifts.ro

**United Kingdom KLEEMANN Lifts UK Ltd**

Unit 8 Arena 14,  
Charbridge Lane, Bicester  
Oxfordshire, OX26 4ST  
T: +44 (0) 1869 327070  
uk@kleemannlifts.com

**China KLEEMANN China**

Kunshan American Industrial Park  
No. 238 Chenfeng Road  
KSND, Kunshan, Jiangsu, China | 215300  
T: +86 0512 36823223  
F: +86 0512 36823240  
info@kleemannlifts.cn  
www.kleemannlifts.asia

**Russia KLEEMANN Russia**

Plekhanova Street, 4a  
P.C. 111123, Moscow, Russia  
T&F: +7499 9511 399  
office@kleemannlifts.ru

**Germany Sales Office Germany**

T: +49(0)160 91 70 98 73  
sales@kleemannlifts.de

**United Arab Emirates Sales Office UAE**

uae@kleemannlifts.com

**Poland Sales Office Poland**

T: +48 22 343 94 94  
poland@kleemannlifts.pl

**Kingdom of Saudi Arabia Sales Office KSA**

T: +966 531390940,  
ksa@kleemannlifts.com

**The Republic of Azerbaijan Sales Office Baku**

T: +994124642023  
baku@kleemannlifts.com

**France Sales Office Paris**

T: +33 642975490  
france@kleemannlifts.com



[www.kleemannlifts.com](http://www.kleemannlifts.com)



Visit us at  
[www.kleemannlifts.com](http://www.kleemannlifts.com)