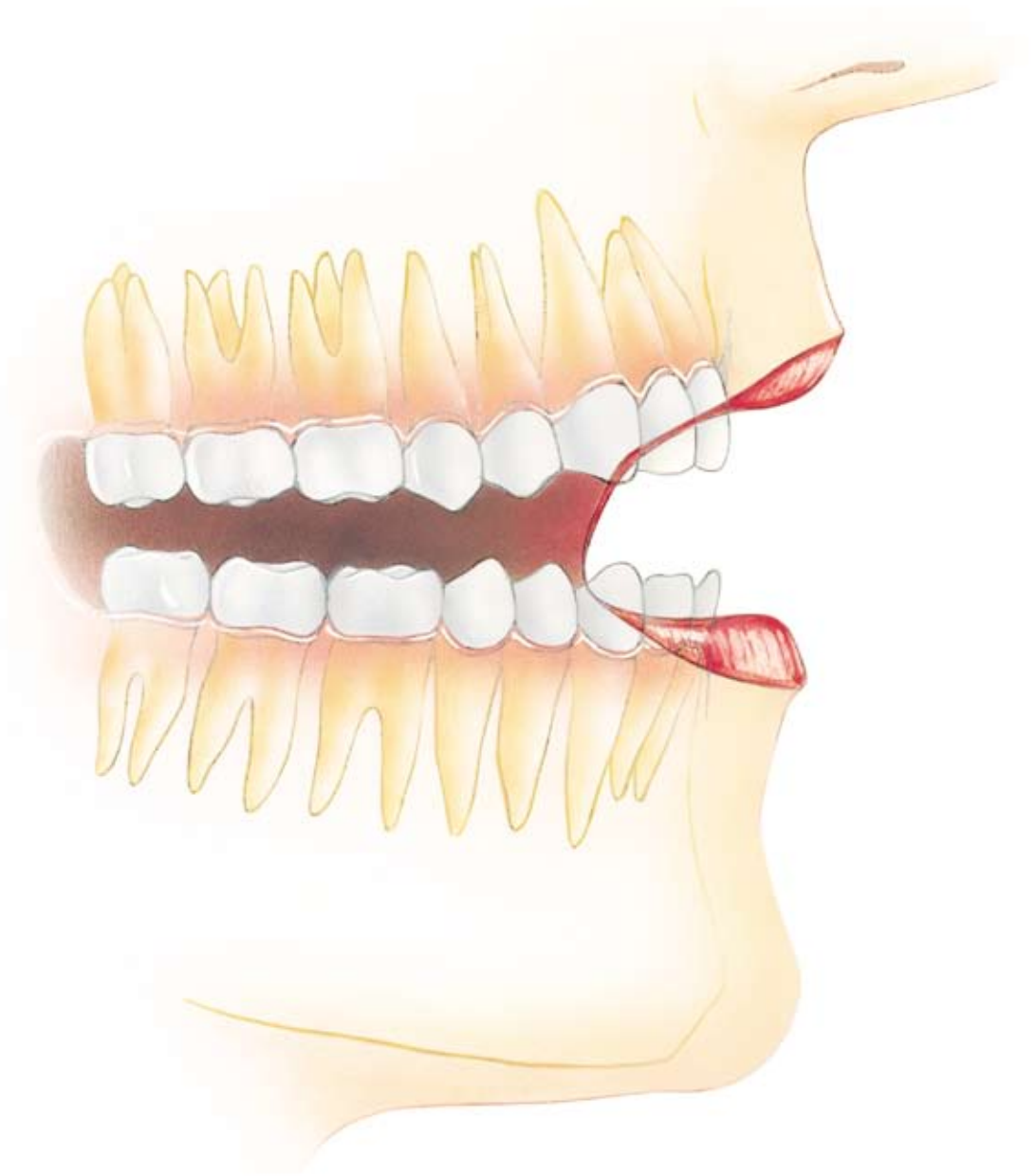


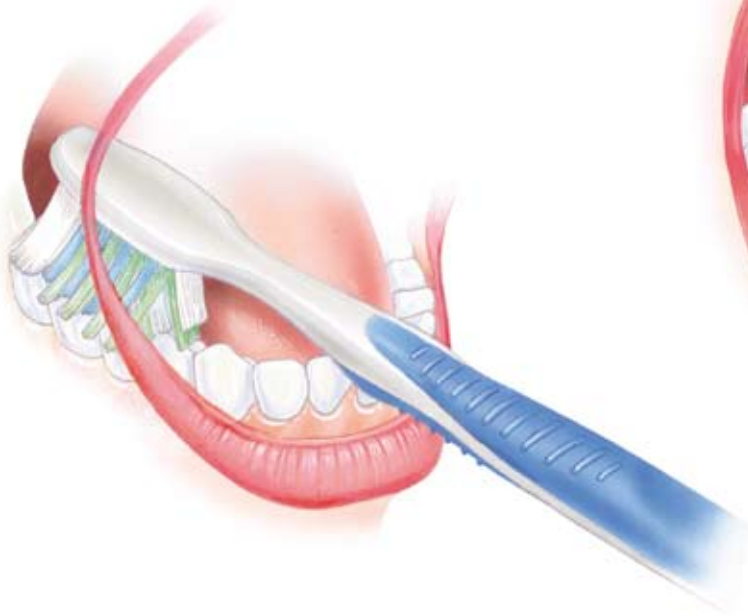
A patient guide to good oral health



Plaque and tartar



Manual brushing



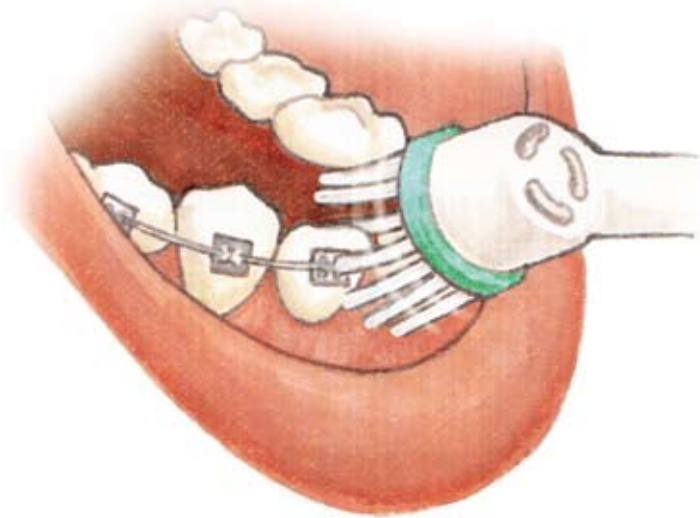
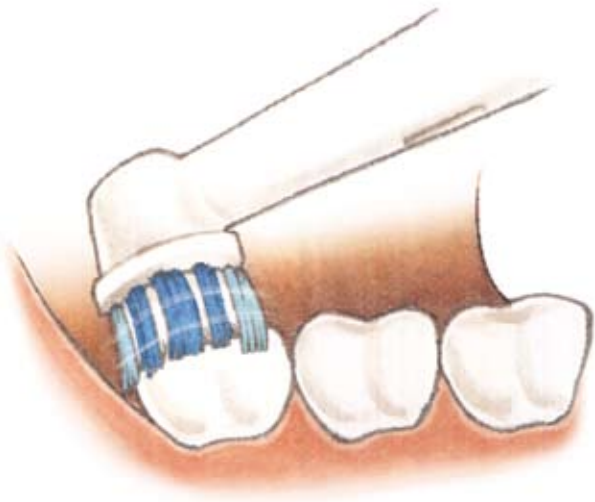
MANUAL BRUSHING

Healthy gums



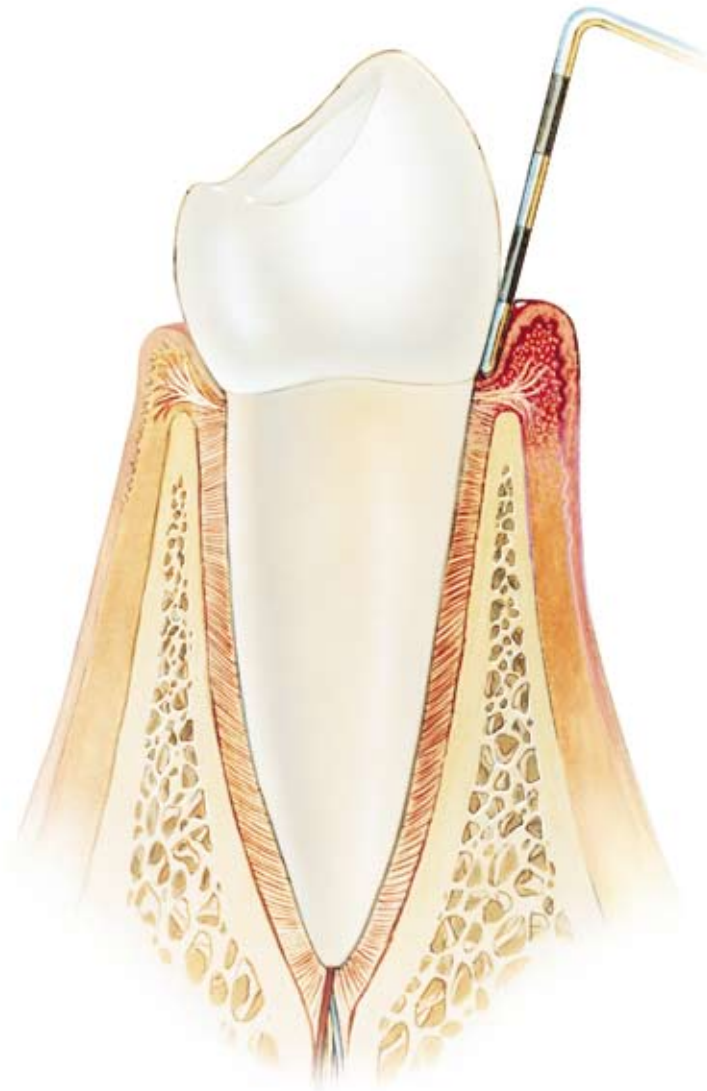
HEALTHY GUMS

Electric brushing (Oscillating-Rotating)



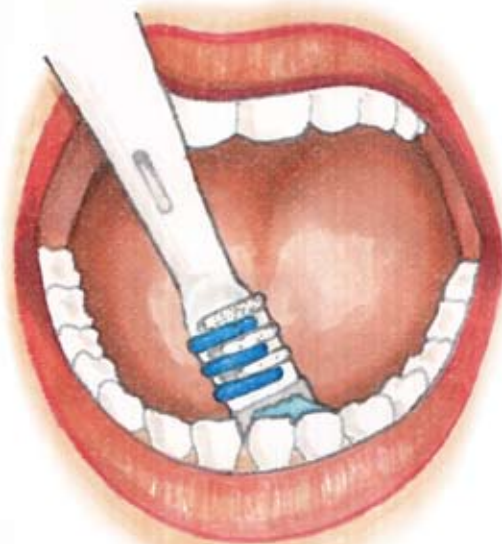
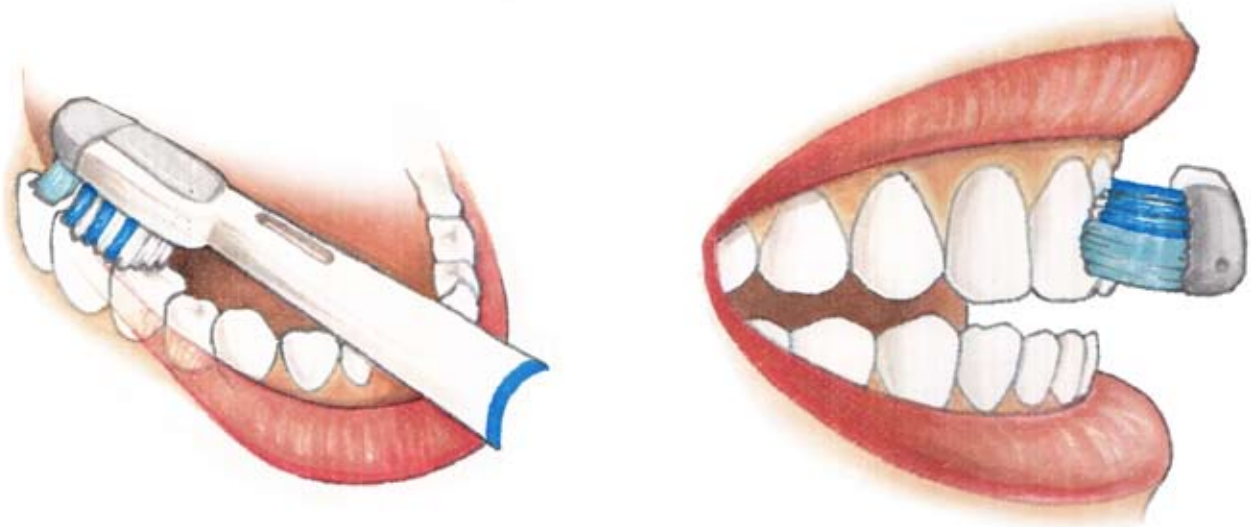
ELECTRIC BRUSHING
(OSCILLATING-ROTATING)

Gingivitis

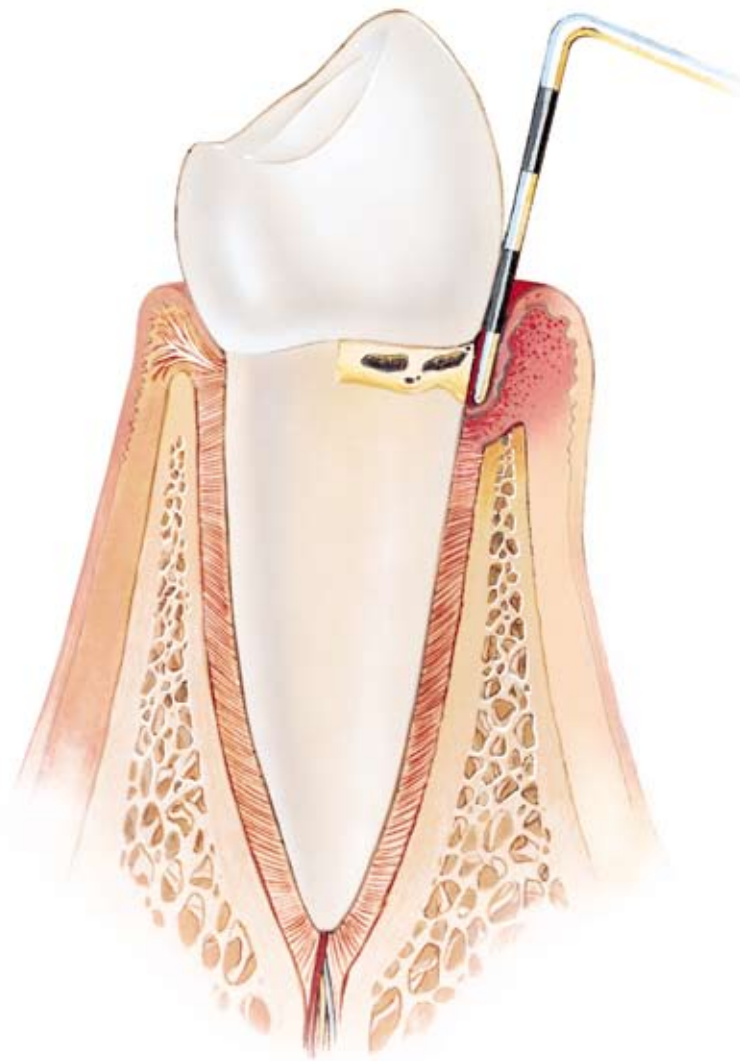


GINGIVITIS

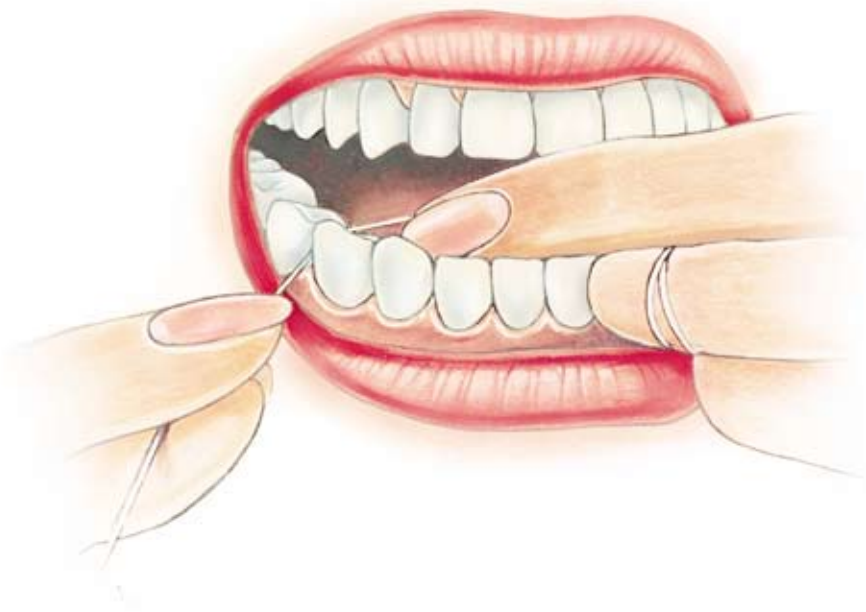
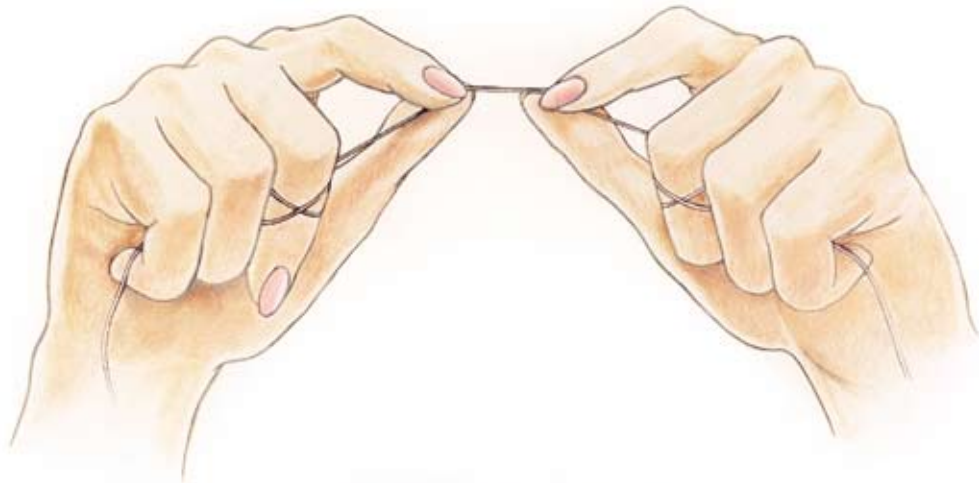
Electric brushing (manual-like brush head)



Early periodontitis

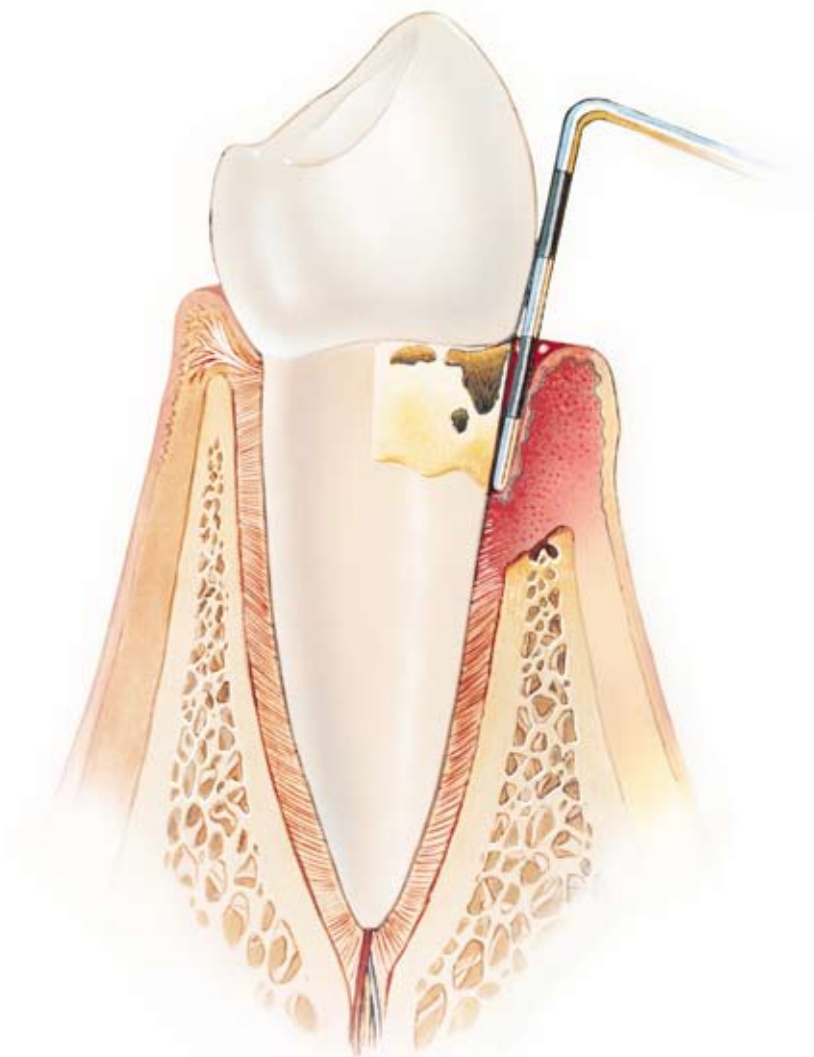


Flossing



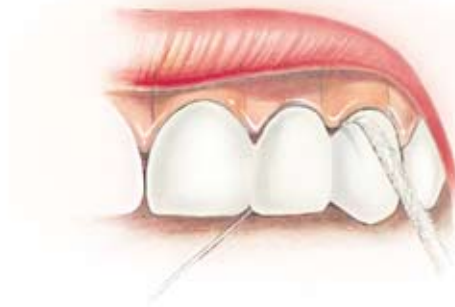
FLOSSING

Moderate periodontitis



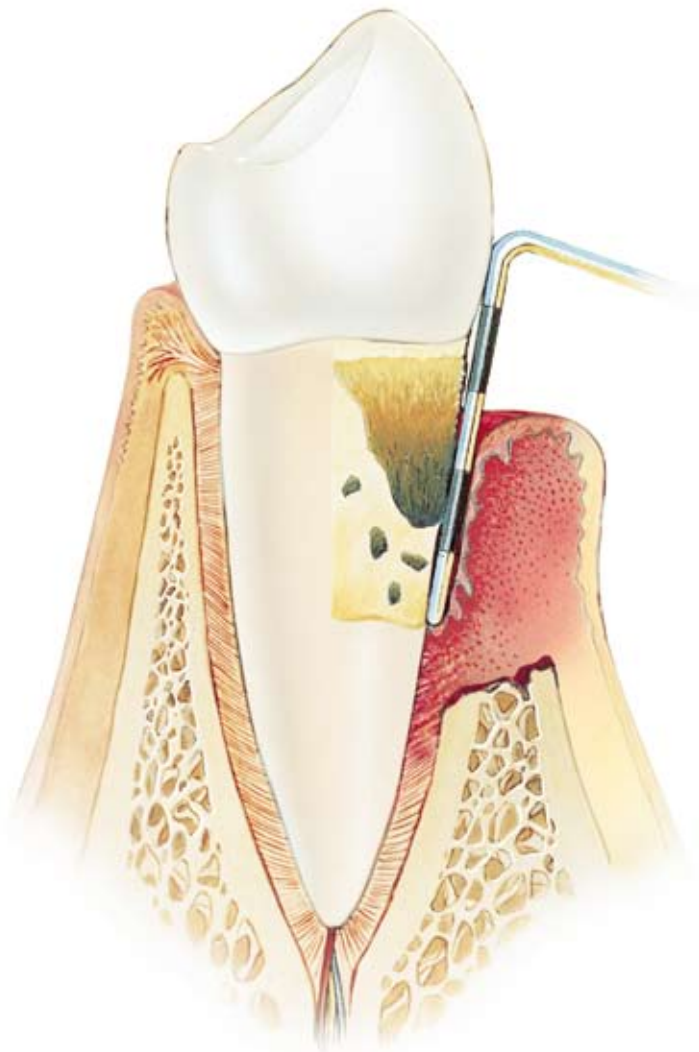
MODERATE
PERIODONTITIS

Special flossing (Super Floss)



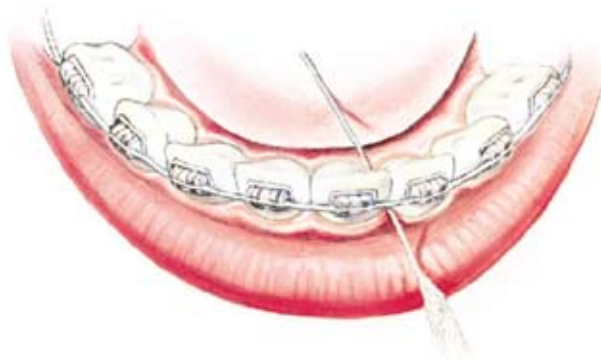
SPECIAL FLOSSING
(SUPER FLOSS)

Severe periodontitis

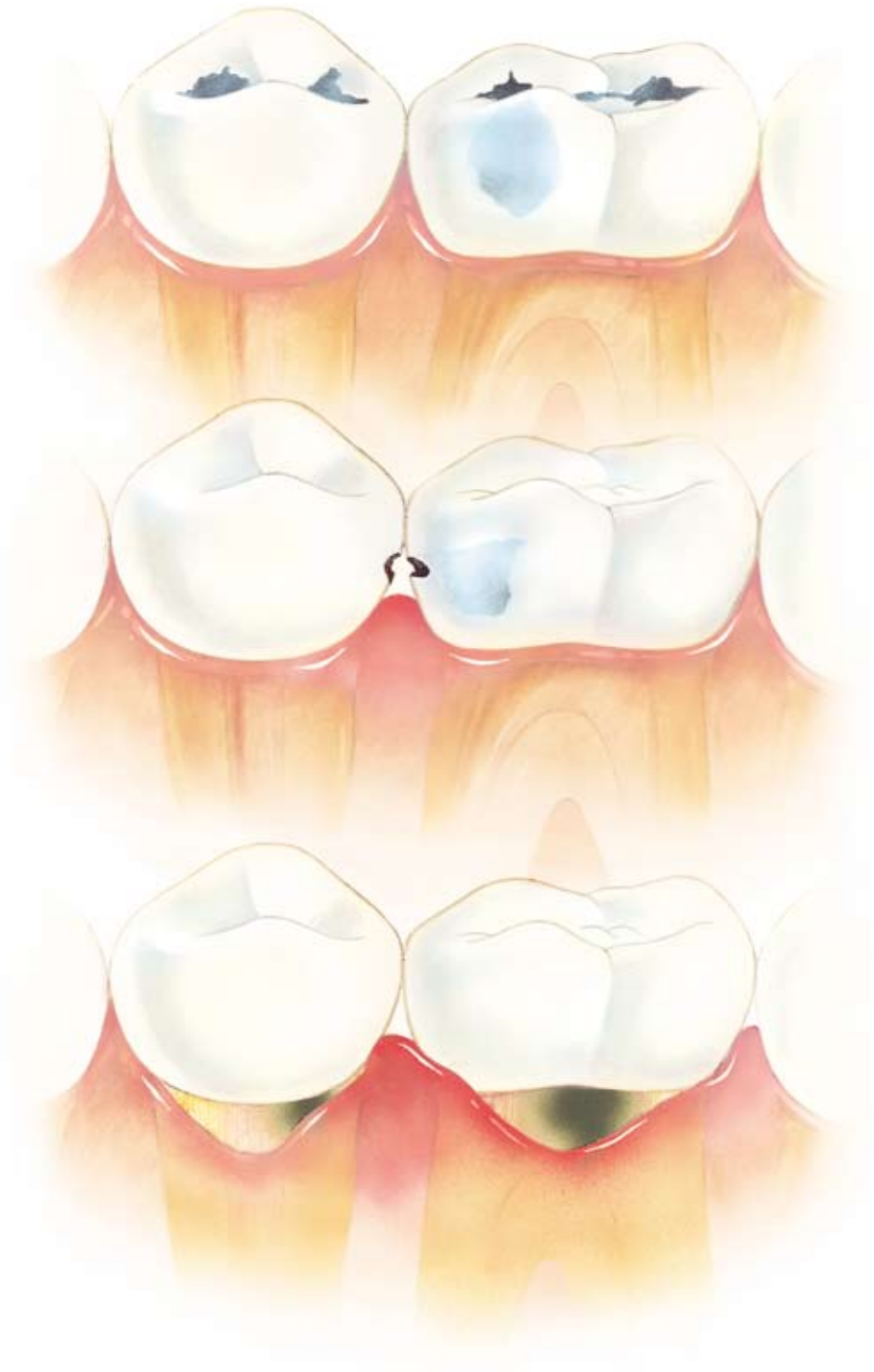


SEVERE
PERIODONTITIS

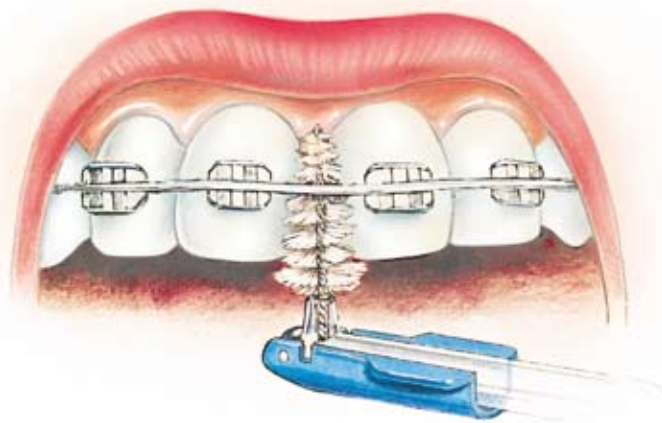
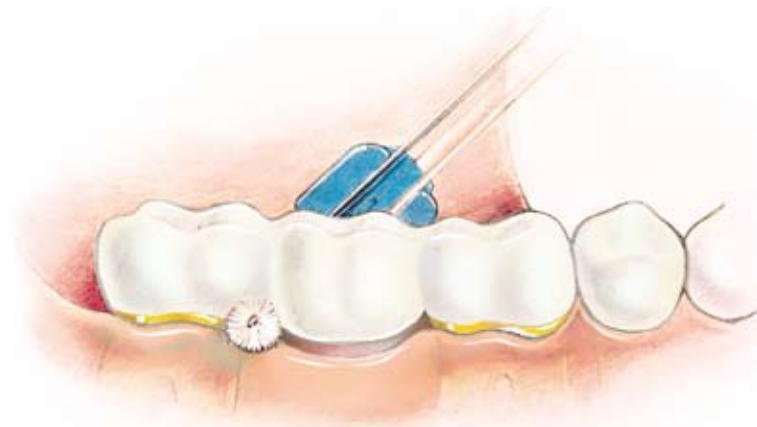
Special flossing (Super Floss)



Dental caries



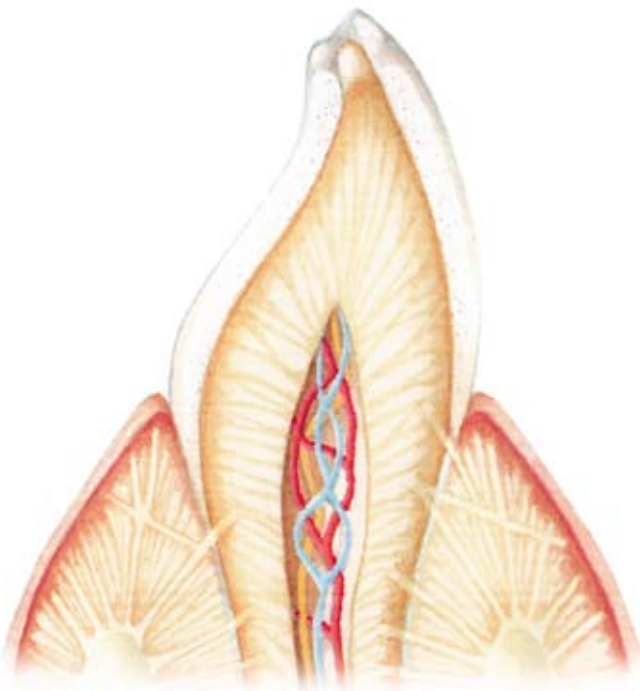
Interdental Brushing



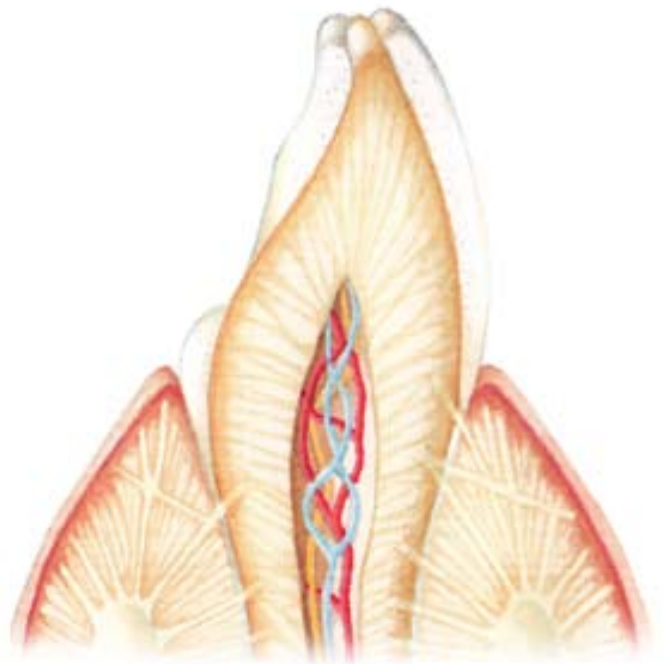
INTERDENTAL
BRUSHING

Erosion

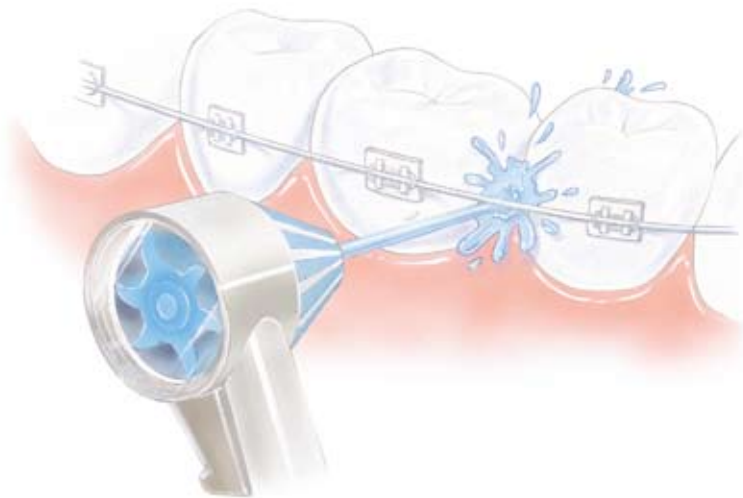
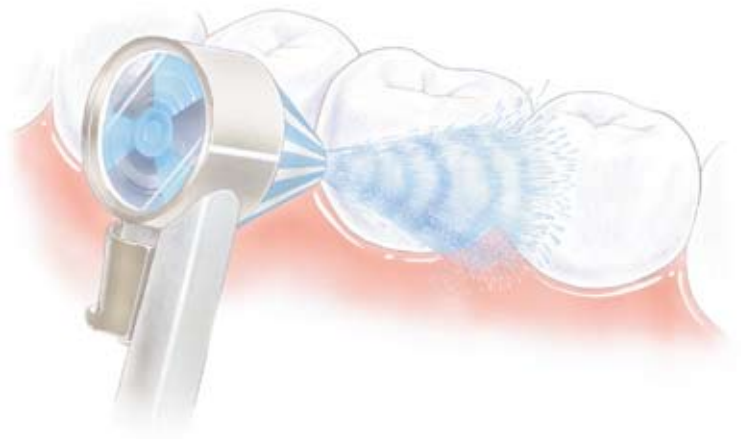
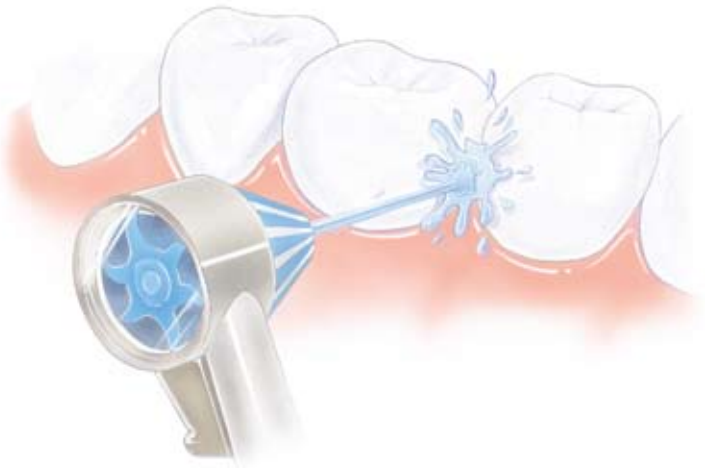
Moderate
Erosion



Severe
Erosion



Oral Irrigation



ORAL IRRIGATION

Stains



STAINS

Brush heads for different needs



Precision Clean



Trizone



Floss Action



3D White



Sensitive



Power Tip



Ortho



A patient guide to good oral health

