

# BRISBANE AIRPORT

## HELICOPTER AND LIGHT AIRCRAFT ROUTES

Airservices will implement standard flight path routes to and from Brisbane Airport for helicopters and light aircraft from 1st November 2018.

### WHAT IS GOING TO CHANGE?

The new flight paths follow routes that helicopters and light aircraft already fly to keep them clear of arriving and departing jet aircraft. This change formalises the routes by publishing them in aeronautical documents. This allows pilots to lodge flight plans for flights on these routes and improves how that information is displayed using the air traffic control radar system, particularly for departing light aircraft.

Helicopters and light aircraft will continue to be permitted to fly outside these new routes as permitted by Civil Aviation Regulations. At present there are approximately twelve flights a day on these routes. This may increase over time.

Figure 1 shows the new standard routes in blue and tracks of existing aircraft movements on these routes over six months in green. Please note that helicopters and light aircraft currently fly outside these routes and will continue to do so. The routes are:

- Brisbane Airport direct to and from Mt Cootha TV Towers
- Brisbane Airport direct to and from Manly Boat Harbour
- Brisbane Airport to and from Bald Hills Radio Mast

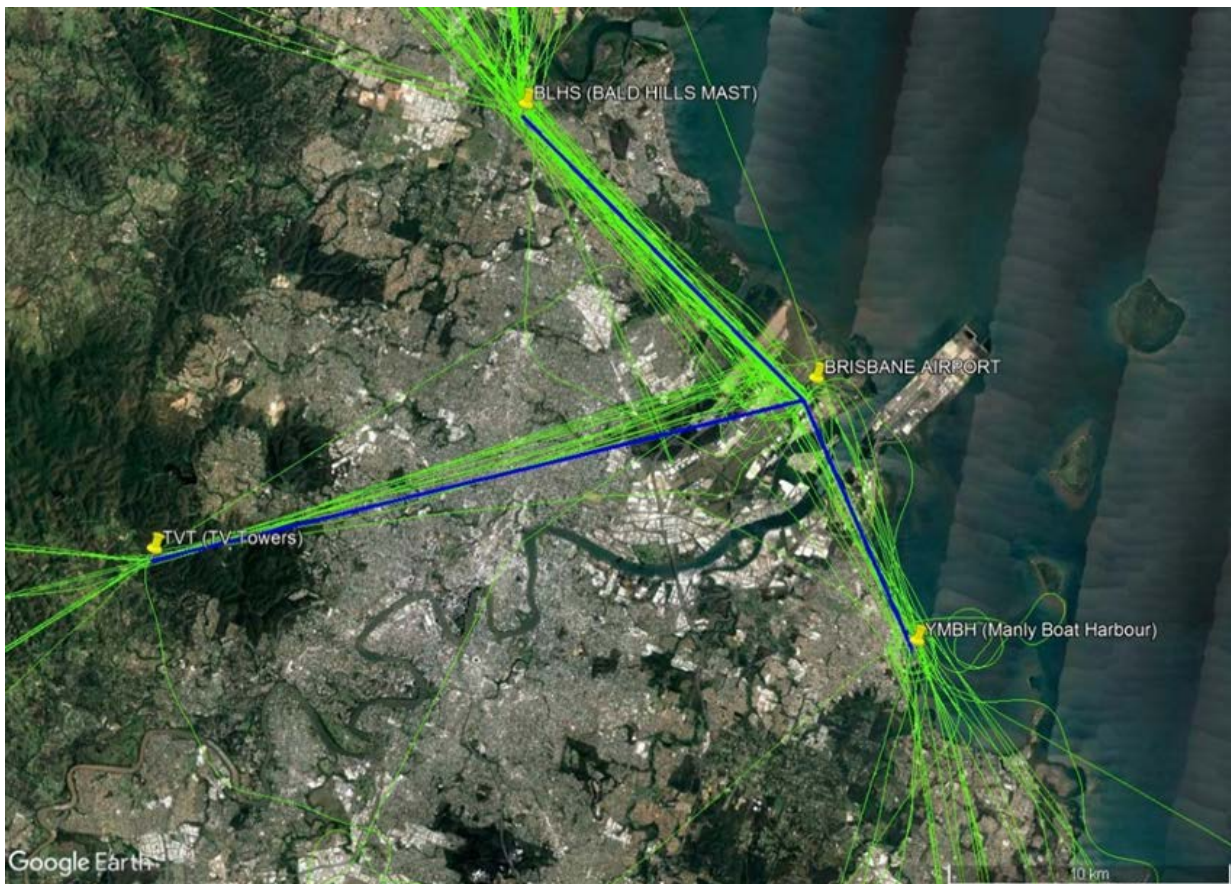


Figure 1: Standard routes to and from Brisbane Airport for helicopters and light aircraft (in blue) with actual departure movements between 1 May and 31 October 2017 shown in green

## WHEN WILL THIS CHANGE START?

1 November 2018.

## WHERE CAN I FIND FURTHER INFORMATION ON THE CHANGE?

Noise Complaints and Information Service (NCIS) on:

- 1800 802 584 (free call), an interpreter service is also available on 131 450
- Our online form at: <https://complaints.bksv.com/asa>
- Mail to Noise complaints and Information Service, PO BOX 211 Mascot NSW 1460.

Please ensure any feedback is provided by 1 October 2018.