

RMCSS-2
0617 ITA



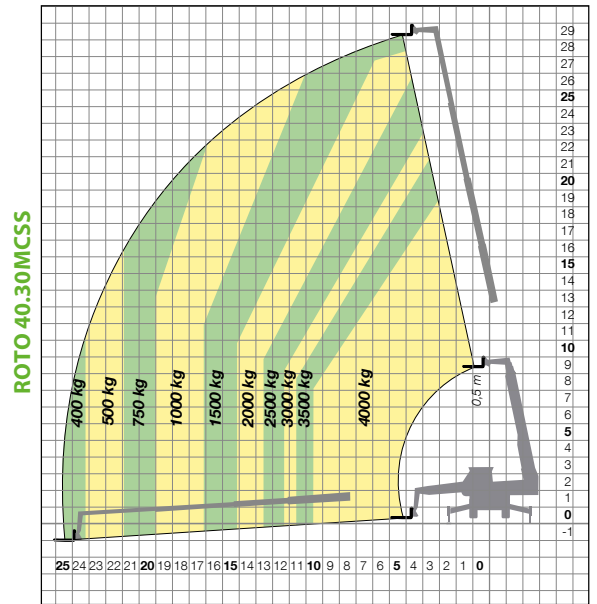
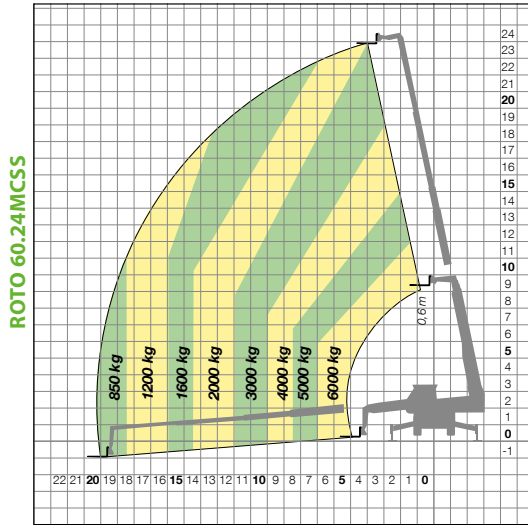
ROTO MCSS - 40.30/60.24



PERFORMANCE AND FEATURES		ROTO60.24MCSS	ROTO40.30MCSS	
PERFORMANCE	Total unladen weight (kg)	18900	19200	
	Maximum capacity (kg)	6000	4000	
	Lifting height (m)	24	29,5	
	Maximum reach (m)	20	25,4	
	Maximum operating height (m)	12	19,5	
	Maximum operating reach (m)	7	10,4	
	Capacity at maximum height (kg)	3000	1500	
	Capacity at maximum reach (kg)	850	400	
	Lateral boom movement (mm)	-	-	
	Tilting correction (%)	+/-10, +/-8	+/-10, +/-8	
Boom sections	4	5		
POWERTRAIN <>	Turbo motor	FPT NEF45	FPT NEF45	
	Displacement/cylinders	4500/4	4500/4	
	Engine Power (kW/HP)	125/170	125/170	
	Anti-pollution technology	EURO IV, SCR+DOC	EURO IV, SCR+DOC	
	Reversible fan	-	-	
	Maximum speed (km/h)	40	40	
	Fuel tank (l)	150	150	
	AdBlue tank (l)	25	25	
	Hydrostatic transmission	●-2V	●-2V	
	EPD	Base	Base	
	Axles	Axial	Axial	
	Reduction hub	Epicicloidali	Epicicloidali	
	Machine brakes	dry discs	dry discs	
Automatic parking brake	●	●		
HYDRAULIC	Hydraulic pump	LS + FS	LS + FS	
	flow rate/pressure (l/min – bar)	115 - 210	115 - 210	
	Hydraulic tank	200	200	
	Hydraulic outlet at the top of the boom	●	●	
	Rear hydraulic outlets	○	○	
CAB	Cab configuration	2004 Cab	2004 Cab	
	MCDC	-	-	
	FOPS LIV II cab	●	●	
	ROPS cab	-	-	
	Cab commands	electronic joystick	electronic joystick	
	Tilting Cab	●	●	
Reverse shuttle	finger touch	finger touch		
CONFIGURATION	Cab suspension	-	-	
	Boom suspension	-	-	
	Suspension on axles	●	●	
	Work headlights on cab	○	○	
	Sun blind	○	○	
	Tac-lock	●	●	
	Provision for a platform	●	●	
	Two floating forks	●	●	
	Inching-Control	-	-	
	four-wheel drive	●	●	
	Four-wheel steering	●	●	
	Three steering modes	●	●	
	Standard tyres	445/65-22.5	445/65-22.5	
	Optional tyres	-	-	
	Stabilisers	multiposition	multiposition	
	Turret rotation	continuous	continuous	
	Type approval as an agricultural tractor	-	-	
	Approval with PNEUMATIC braking (ton)	-	-	
Approval with HYDRAULIC braking (ton)	-	-		
PTO	-	-		
3-point linkage	-	-		
DIM.	Width	2490	2490	
	Height	3100	3100	
	Length	7430	7560	
	Wheelbase	3200	3200	

- Not Available. ● standard. ○ optional.

LOAD CHARTS



NOTE - NOT ALL DEFINITIONS BELOW ARE VALID ON MODELS IN QUESTION. DEFINITION ARE

JUST AN OVERVIEW FOR YOUR BENEFIT

DEFINITIONS

SCR	➤ Selective Catalyst Reduction, solution used for the reduction of NOx in the exhaust gases through the injection of a liquid - UREA (AdBlue) - into the exhaust gases.
DPF	➤ Diesel Particulate Filter, a solution used to reduce fine particle emissions in exhaust gases
DOC	➤ Diesel Oxidation Catalyst, a solution used to reduce carbon monoxide (CO) and hydrocarbons in exhaust gases
EGR	➤ Exhaust Gas Recirculation, a solution used to reduce NOx in exhaust gases by recirculating gas inside the combustion chamber of the engine.
1-2V	➤ 1 or 2 speed Merlo gearbox
CVTronic	➤ Continuous variation Merlo gearbox, for constant acceleration without loss of torque
EPD	➤ Eco Power Drive, Merlo electronically-controlled hydrostatic transmission Electronic, enables effective RPM management in order to reduce overall fuel consumption by the machine
EPD Plus	➤ in addition to the EPD Control, it is also possible to work using Speed Control (maintaining a constant travel speed) and Heavy Load (management of RPM in order to maximise performance for tasks such as: bucketing operations, heavy duty unloading, etc.)
EPD Top	➤ In addition to the EPD Plus control function, this enables the RPM to be managed directly using the joystick.
Gear	➤ fixed displacement pump with gears, combined with an open centre hydraulic distributor.
LS	➤ variable displacement pump with Load Sensing control, combined with a closed centre hydraulic distributor
LS + FS	➤ variable displacement pump with Load Sensing control, combined with a closed centre hydraulic distributor equipped with solenoid valves and Flow Sharing control.
ECO/PREMIUM cab	➤ MODULAR type cabin with simplified or PREMIUM equipment
MCDC	➤ Merlo Dynamic Load Control, electronic control of the machine's anti-rollover system.
• Light	➤ simplified version;
• Complete	➤ version with display in cab.
FOPS	➤ Falling object protective structure, the protection system which shields the operator from heavy objects falling onto the cab. Two levels:
• FOPS Liv I	➤ object with a weight of 45kg falling from 3 metres.
• FOPS Liv II	➤ object with a weight of 227kg falling from 5.2 metres.
ROPS	➤ Roll-over protection system (or roll-over protection structure), the system that protects the operator if the vehicle rolls over
Finger-Touch	➤ driving direction inversion system mounted on the steering column
Dual Reverse	➤ dual driving direction inversion system, on both the steering column and the joystick
Tac-lock	➤ hydraulic attachment clamping system controlled from the cab



MERLO S.P.A.

Via Nazionale, 9 - 12010 S. Defendente di Cervasca - Cuneo - Italia

Tel. +39 0171 614111 - Fax +39 0171 684101

www.merlo.com - info@merlo.com

