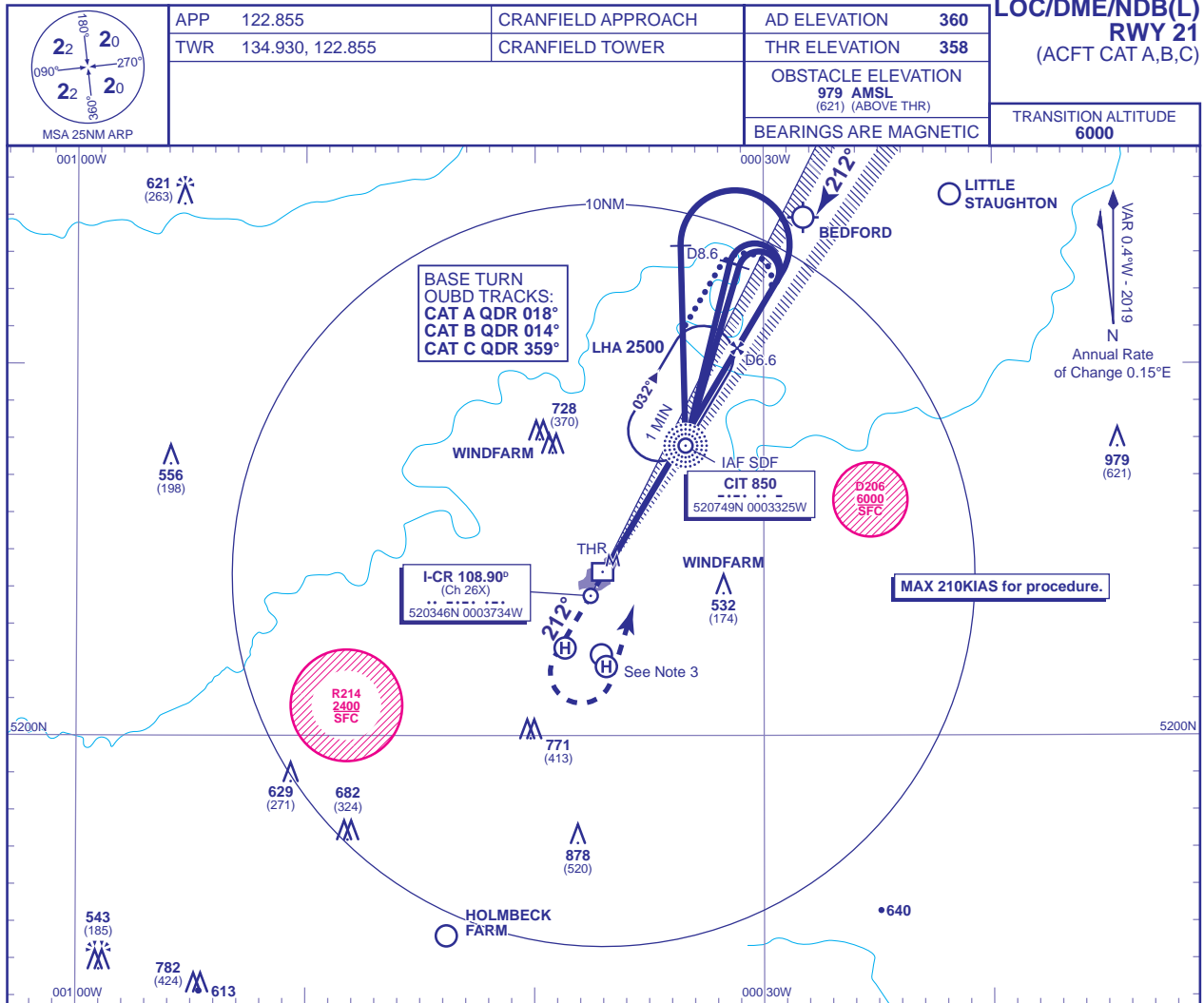


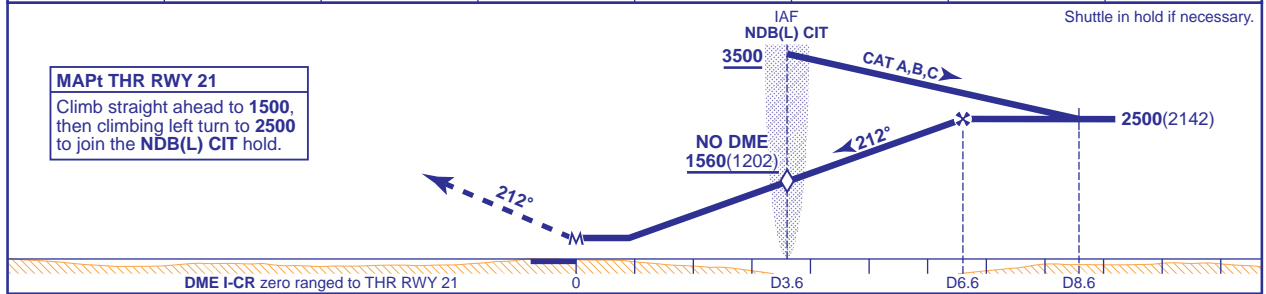
INSTRUMENT APPROACH CHART - ICAO

**CRANFIELD**  
**LOC/DME/NDB(L)**  
**RWY 21**  
(ACFT CAT A,B,C)



**RECOMMENDED PROFILE** Gradient 5.2%, 320FT/NM

DME I-CR	6	5	4	3.6 (SDF)	3	2	1
ALT(HGT)	2310(1952)	1990(1632)	1680(1322)	1560(1202)	1360(1002)	1040(682)	730(372)



Aircraft Category	OCA (OCH)	Procedure	Rate of descent							
			A	B	C	G/S KT	FT/MIN	MIN:SEC		
VM(C)OCA (OCH AAL)	Total Area		800(440)	970(610)	1150(790)	160	140	120	100	80
						860	750	640	540	430
						1:25	1:35	1:50	2:12	2:46

**ALTERNATIVE PROCEDURE EXTENDED HOLDING PATTERN**  
Extend the outbound leg of the NDB(L) CIT holding pattern to D8.6; descending to 2500(2142). Then turn right to intercept the LOC. Continue as for main Procedure.

**AIRCRAFT UNABLE TO RECEIVE DME**  
Fly outbound prior to baseturn or extend outbound leg of the NDB(L) CIT hold for 2.5MIN (CAT A); 2MIN (CAT B); 1.5MIN (CAT C) descending to 2500(2142). Then turn right to intercept the LOC. When established inbound descend not below 1560 (1202) at the SDF (NDB(L) CIT), then to MDH.

- NOTE 1** ATC will normally require holding **not below 3500**. Lowest altitude to commence procedure after missed approach is 2500.  
**NOTE 2** CIT NDB(L) hold restrictions: MAX holding level 5000, MAX 180KIAS.  
**NOTE 3** Occasional light aircraft and helicopter activity at Salford Helipad (520222N 0003841W), Hulcote Farm (520211N 0003706W), and Helimech Helipad (520152N 0003653W).  
**NOTE 4** Aircraft may be requested to report crossing the DTY115 radial.

**CHANGE (10/18): FREQUENCIES.**

AERO INFO DATE 14 JUN 18